

# Chinatown Curbside Management Study



# Agenda

- Study Goals
- Improvement Plan, Implementation and Results
- Going Forward
- Questions

# Study Goals

- Match parking regulations to neighborhood needs
- Make parking and commercial deliveries easier
- Improve pedestrian circulation and safety
- Develop innovative short-term improvements that can be implemented quickly



# Improvement Plan – Project Area



# Mott Street



# Improvement Plan: Mott Street

## Issues

- Pedestrian congestion
- Commercial deliveries
- Double Parking
- High Parking Occupancy
- Traffic flow

## Plan Elements

- Sidewalk Extension
  - *Implemented October 2013*
- Parking Regulations Modifications
- Metered Commercial Parking
  - *3-hour metered commercial parking 7am-6pm M-Sat*

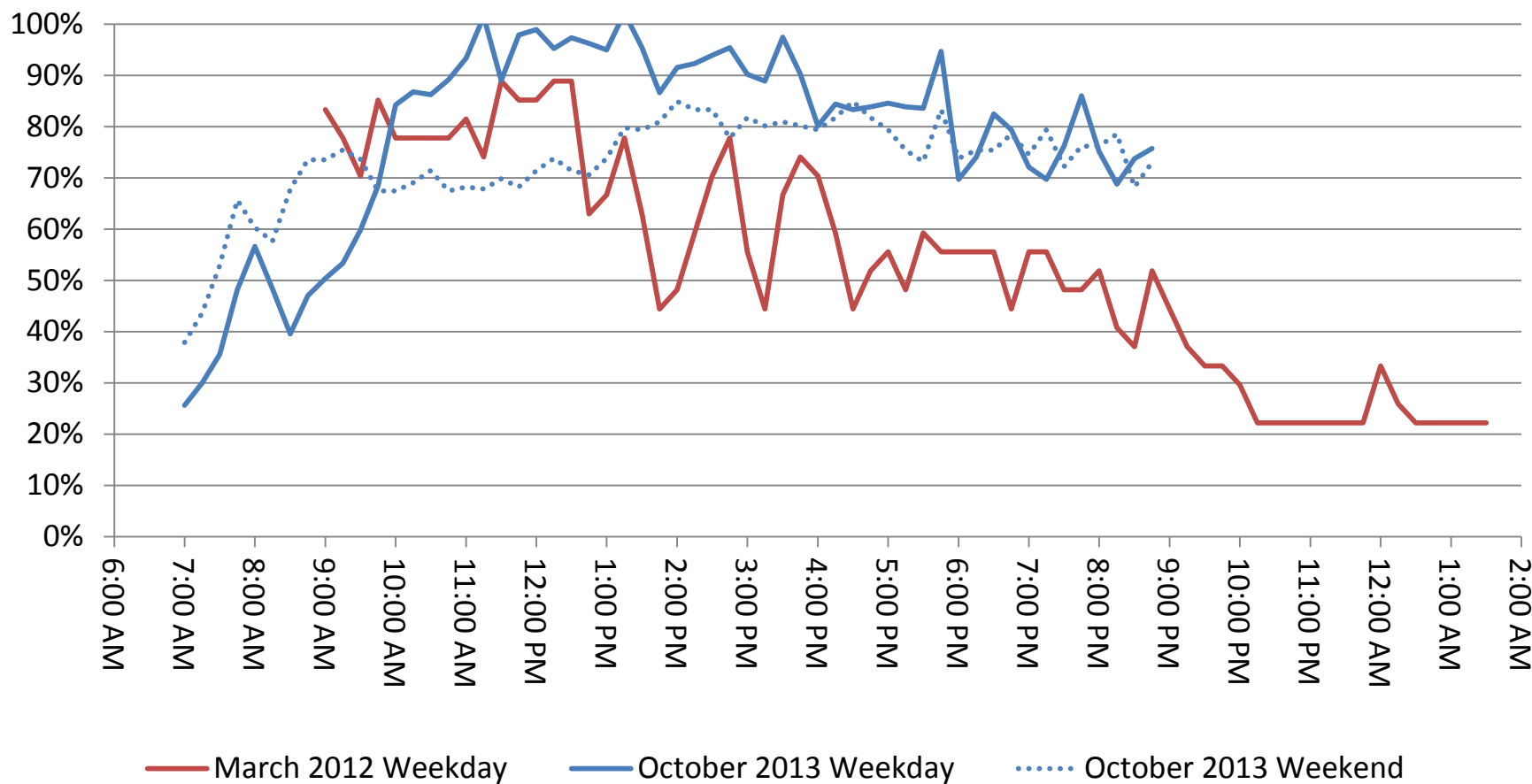


# Mott Street Curb Extension



# Results: Mott Street

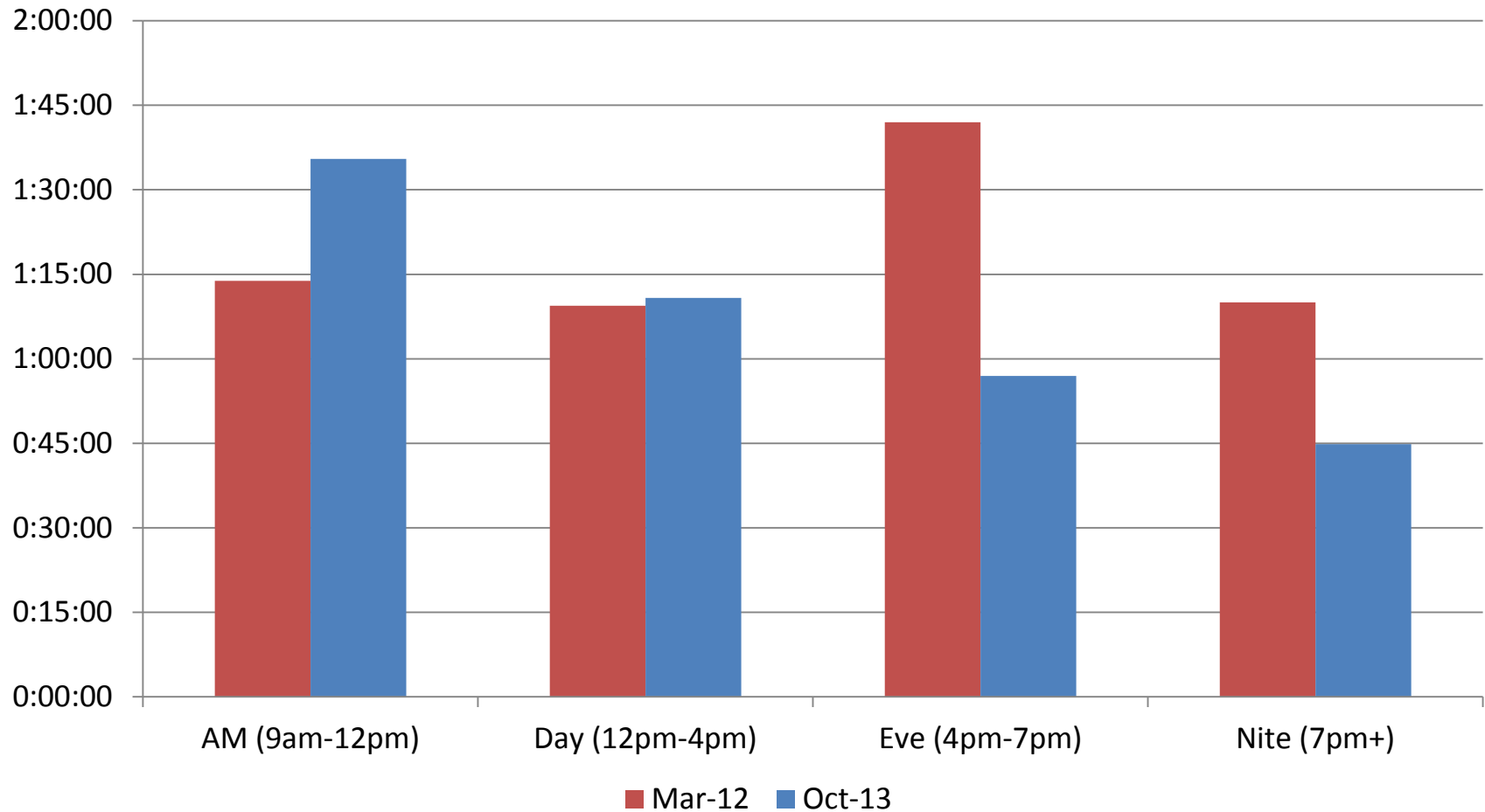
## Mott Street – Parking Occupancy





# Results: Mott Street

**Mott Street Average Duration**



# Findings: Mott Street

- Occupancy is up throughout most of the day, as expected
- Average duration increased in the AM but was unchanged or down throughout the rest of the day
- Curb extension on Mott Street has reduced vehicle and pedestrian congestion
- DOT will continue to monitor crash data

# Hester Street





# Improvement Plan: Hester Street

## Goal:

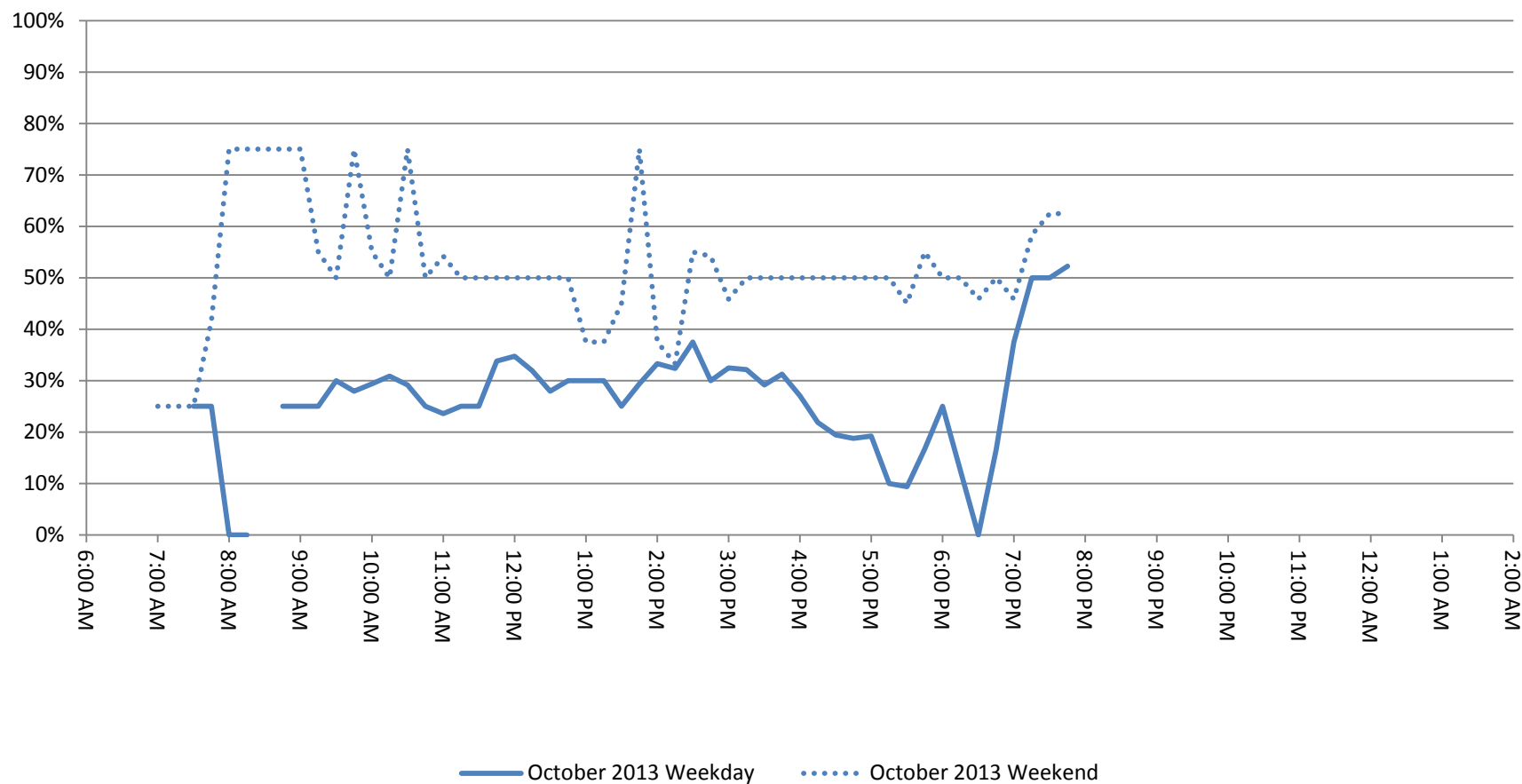
- Improve curbside accessibility for Commercial Deliveries

## Plan Elements:

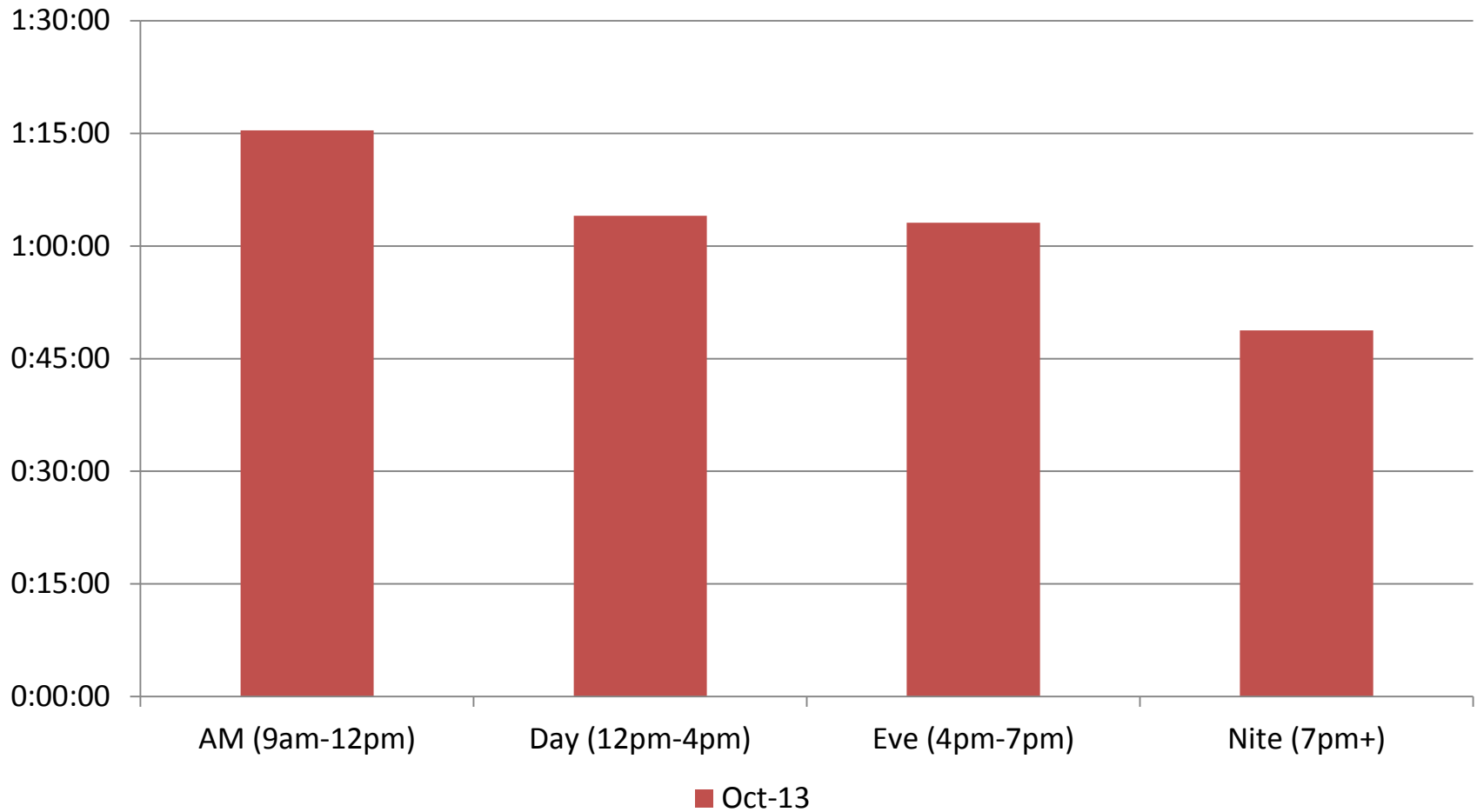
- Implement metered commercial parking with 3-hour limits to increase turnover

# Results: Hester Street

## Hester Street - Parking Occupancy



## Hester Street Average Duration





# Findings: Hester Street

- Occupancy levels are low and delivery vehicles have consistent access to the curb
- Average duration is within normal range

# East Broadway



# Improvement Plan: East Broadway

## Issues:

- Improve curbside accessibility for Commercial Deliveries
- Improve curbside accessibility for passenger parking
- Reduce double parking

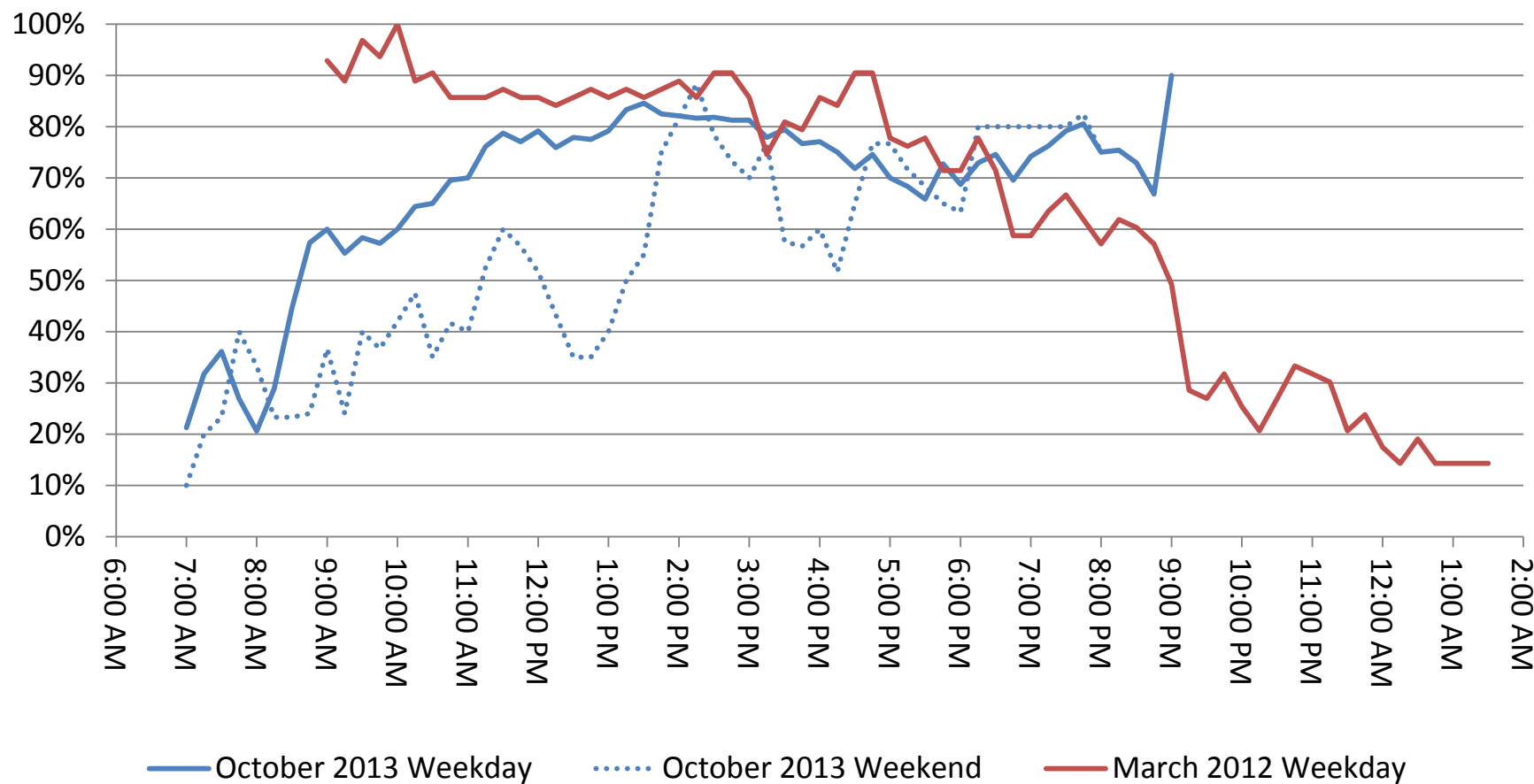
## Plan Elements:

- Implement metered commercial parking with 3-hour limits to increase turnover



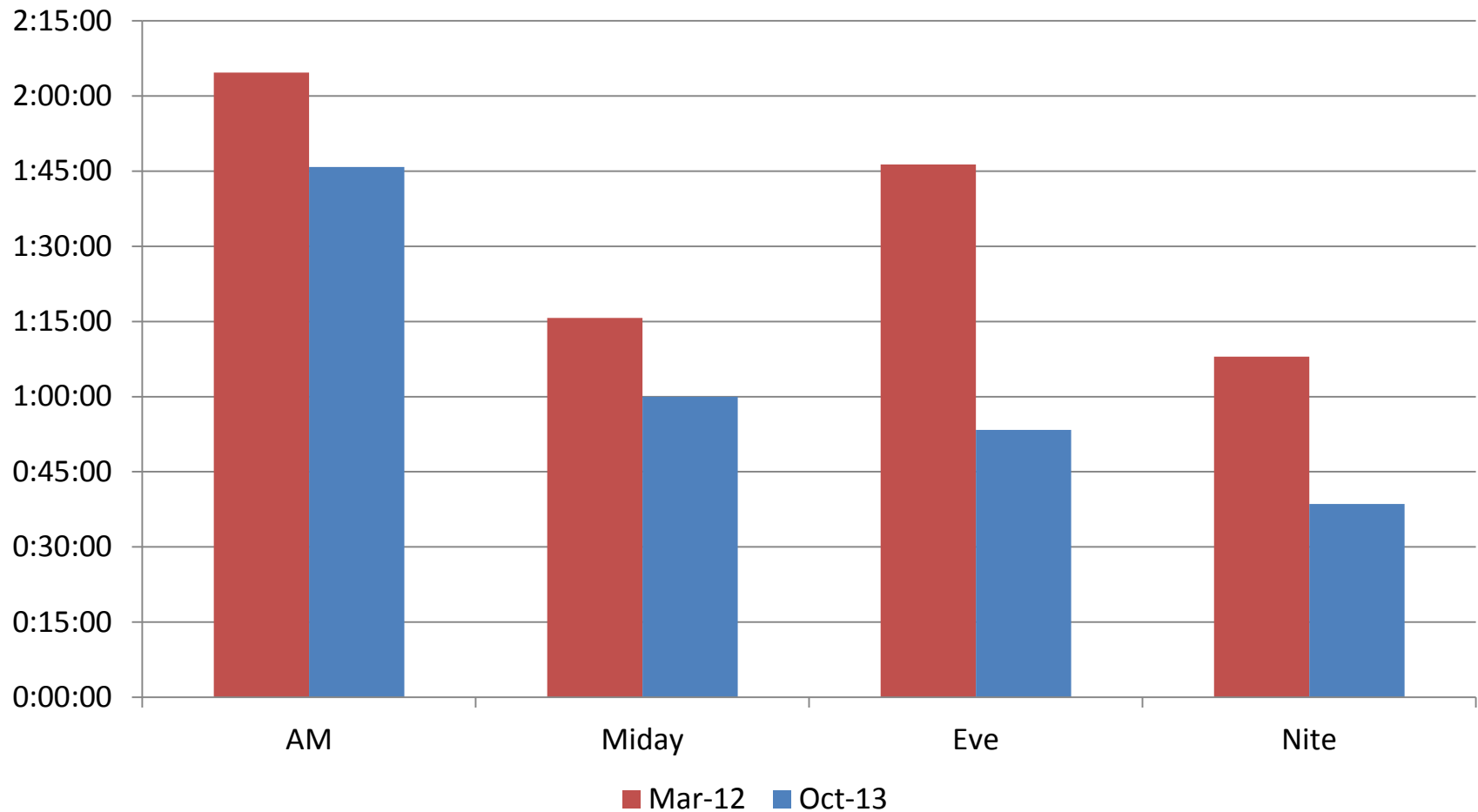
# Results: East Broadway

## East Broadway - Parking Occupancy



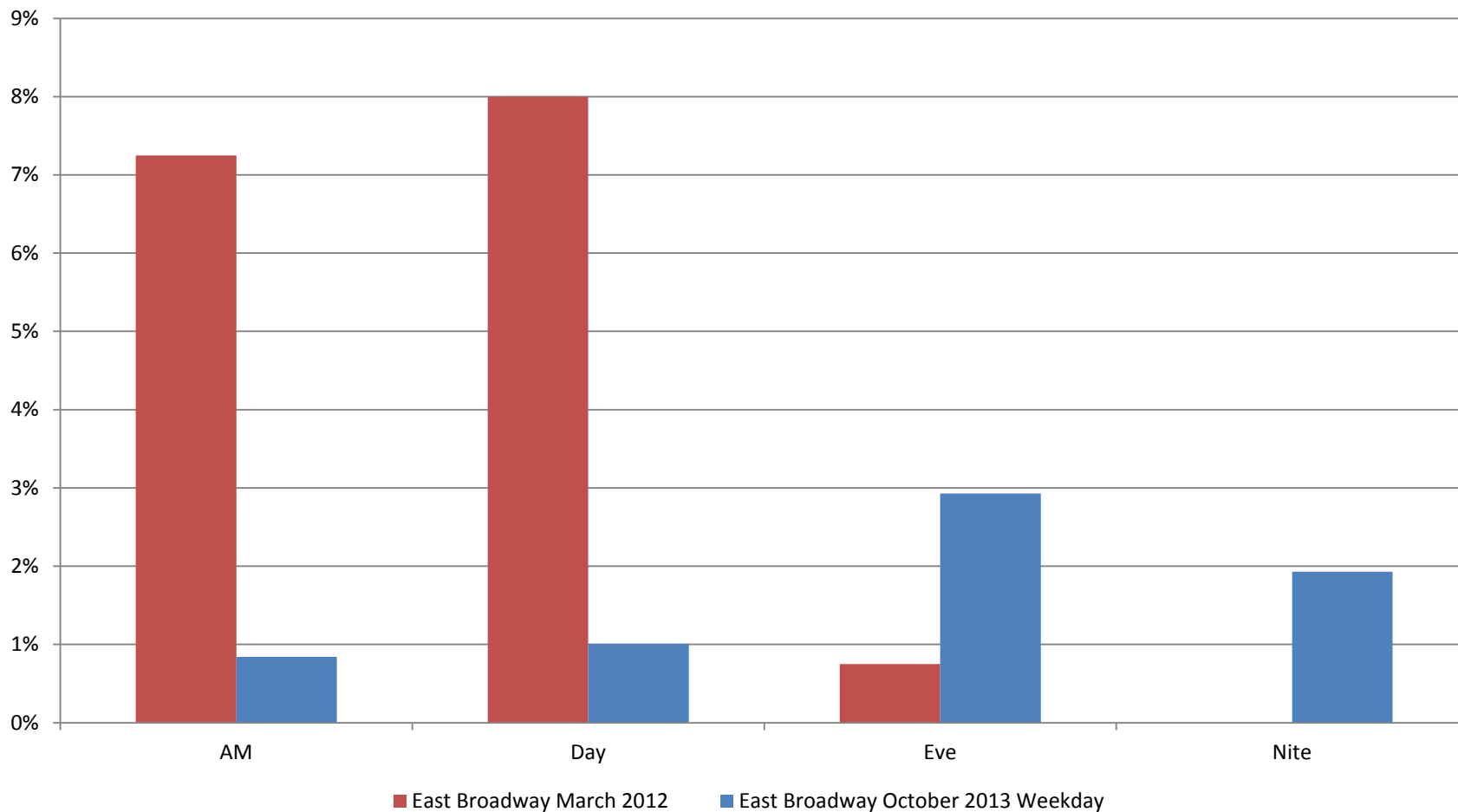
# Results: East Broadway

East Broadway - Average Duration



# Results: East Broadway

## East Broadway - Double Parking Rate



## Findings: East Broadway

- Occupancy is down in the AM but mostly unchanged through Midday, and has increased in the evening
- Average duration is down at all times of day.
- A greater number of vehicles are accessing the curb, indicating increased likelihood of finding parking
- Double Parking has declined significantly, especially in the AM and midday periods



# Catherine Street



# Improvement Plan: Catherine Street

## Issues:

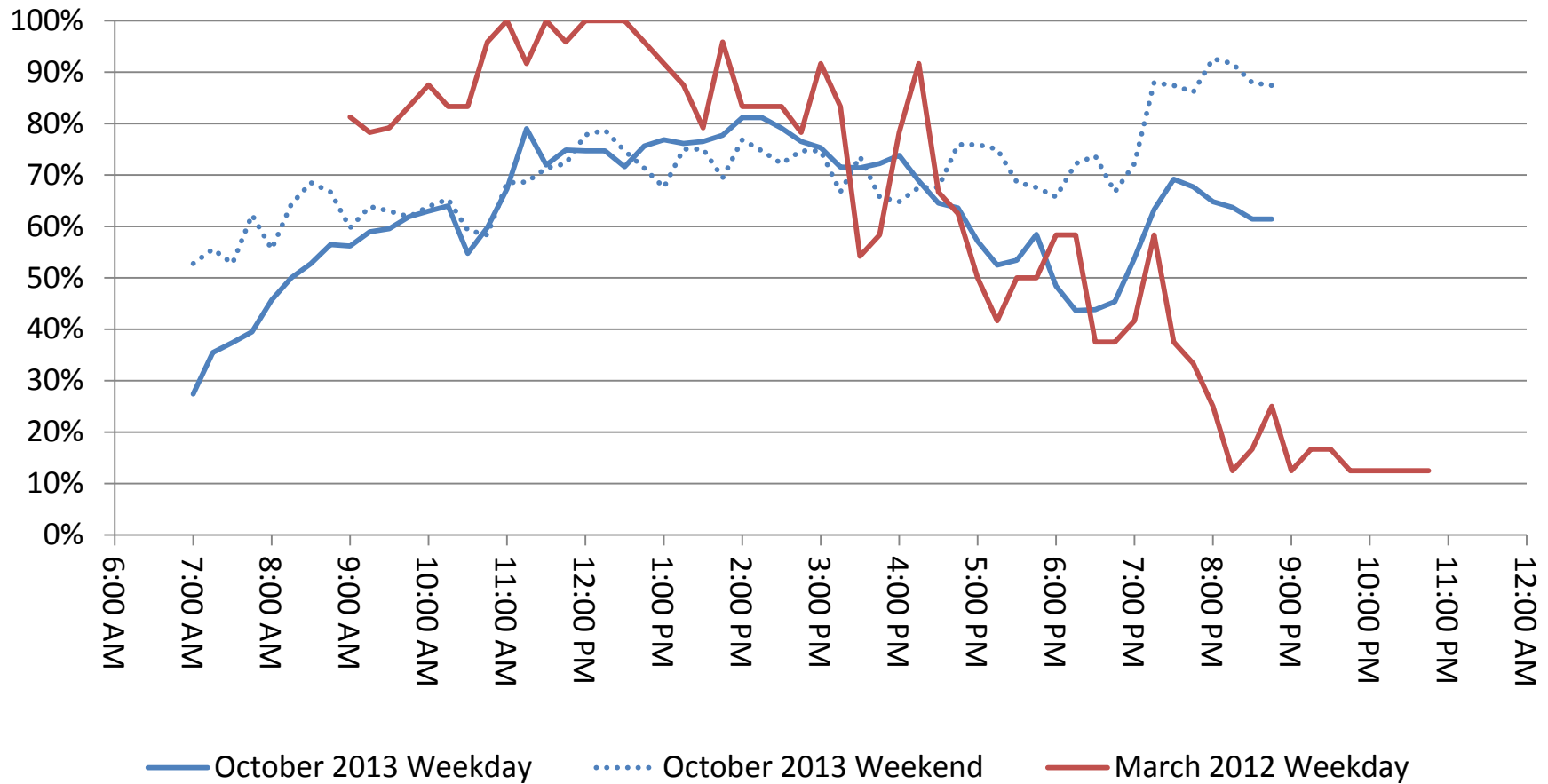
- Commercial Deliveries
- Parking Occupancy

## Plan Elements:

- Parking regulation harmonization and other modifications
- Metered commercial parking

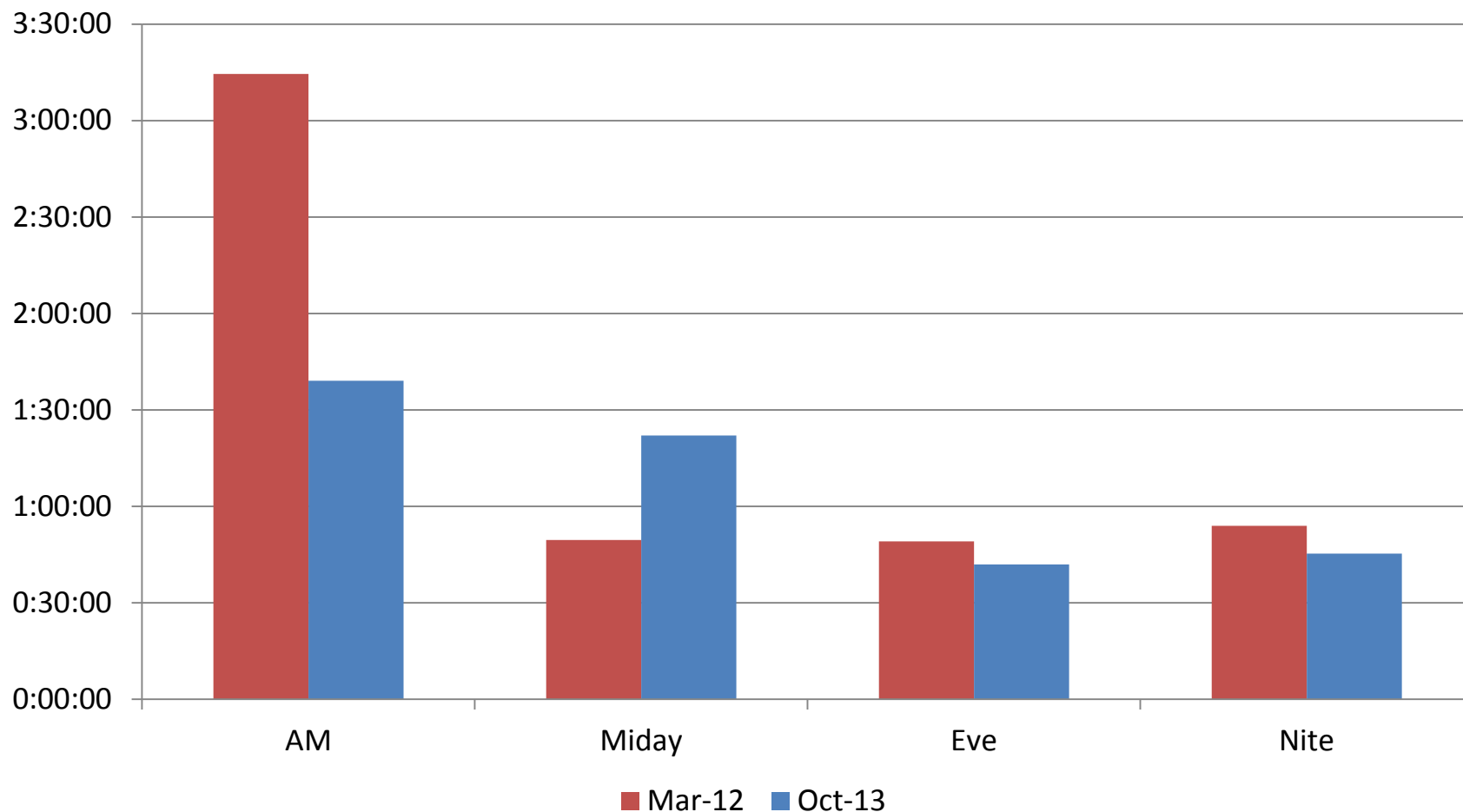
# Results: Catherine Street

## Catherine Street - Parking Occupancy



# Results: Catherine Street

Catherine St Average Duration





# Findings: Catherine Street

- Parking occupancy is down or unchanged throughout the day, but appears to have increased in the nighttime period
- Turnovers has greatly increased in the AM period, when truck traffic is highest
- Parking is significantly easier to find and more vehicles are accessing the curb

# Orchard Street



# Improvement Plan: Orchard Street

## Issues:

- Pedestrian Congestion

## Plan Elements:

- Sidewalk Extension
  - Implemented October 2013

Thank you

