

TOMPKINS SQUARE PARK



EVPC

The East Village Parks Conservancy

Spring 2012

**DRAFT Proposal for a Phased Restoration
Historic Images and Current Conditions**

By: Ellen LeCompte, Roland Legiardi-Laura, Jane Sturtevant, Gail Wittwer-Laird for EVPC

TOMPKINS SQUARE PARK



View of the Temperance Fountain (Installed 1888) in 1934

Tompkins Square is one of New York City's most storied and beloved public squares, first opened in 1834 after the Stuyvesant family gifted the land to the city.

Over time, the park's design has been repeatedly altered to accommodate the politics and needs of the neighborhood's growing population. Renovations in the 1960's and 1990's stripped the park of its elegant historic character.

It is time to envision a plan for the park that both looks forward in programming and sustainability and also back in materials and details to restore the park's design integrity.

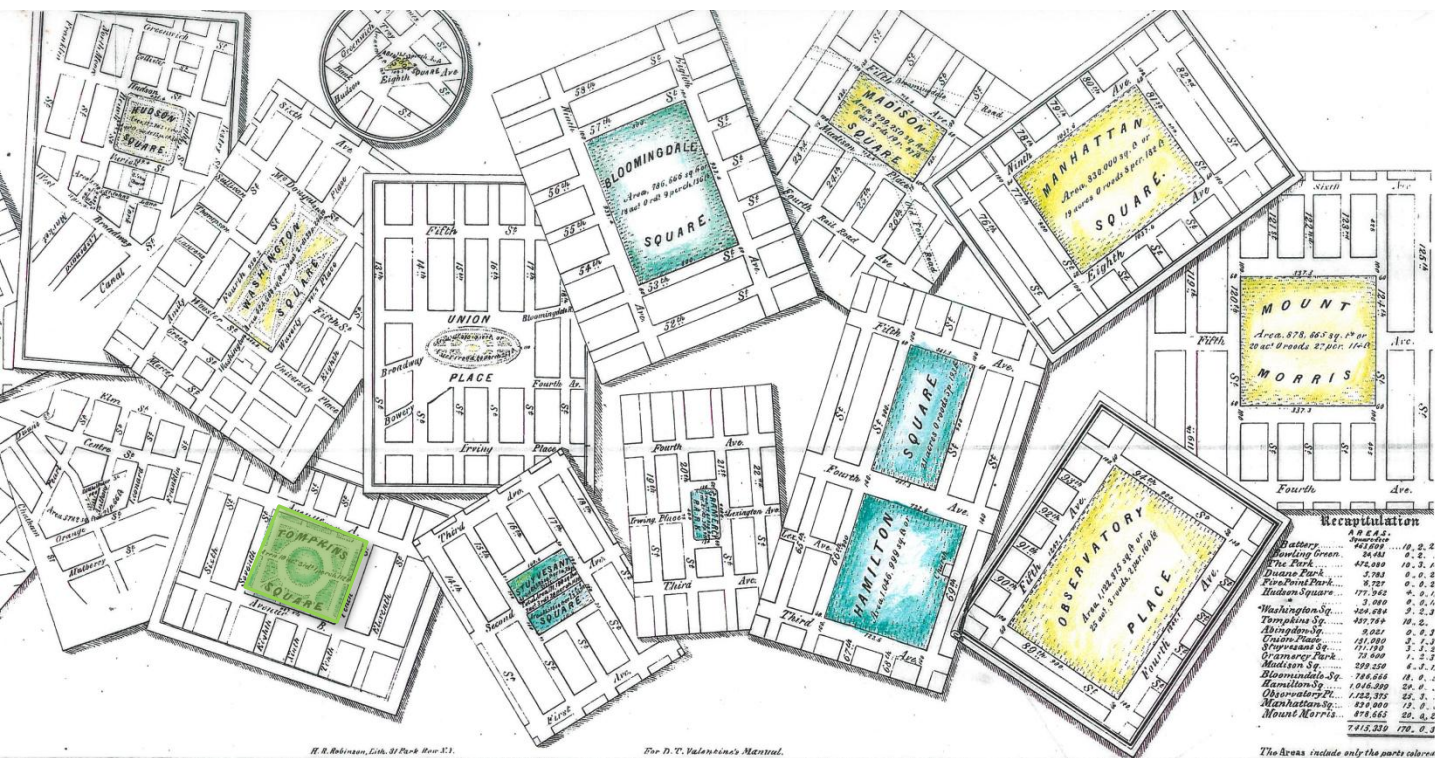
TOMPKINS SQUARE PARK



View of the park from East 7th Street and Avenue A in 1934

**Restoration Proposal for Tompkins Square
Spring 2012**

TOMPKINS SQUARE PARK



Plan from 1848 of Manhattan's most significant public squares

The past two decades have seen major renovations of almost all of the significant "sister" community parks and squares in lower Manhattan- City Hall Park, Union Square, Madison Square, East River Park, Washington Square, Battery Park, Sara Roosevelt Park and the recently announced renovation of Stuyvesant Square Park.

East 10th Street between Avenue A and Avenue B was just declared its own landmarked block by the Landmarks Preservation Commission and St. Bridget's Church across from the Park on Avenue B is undergoing a major restoration. The careful reconstruction of Tompkins Square Park is a vital part of this overall re-birth of lower Manhattan Parks .

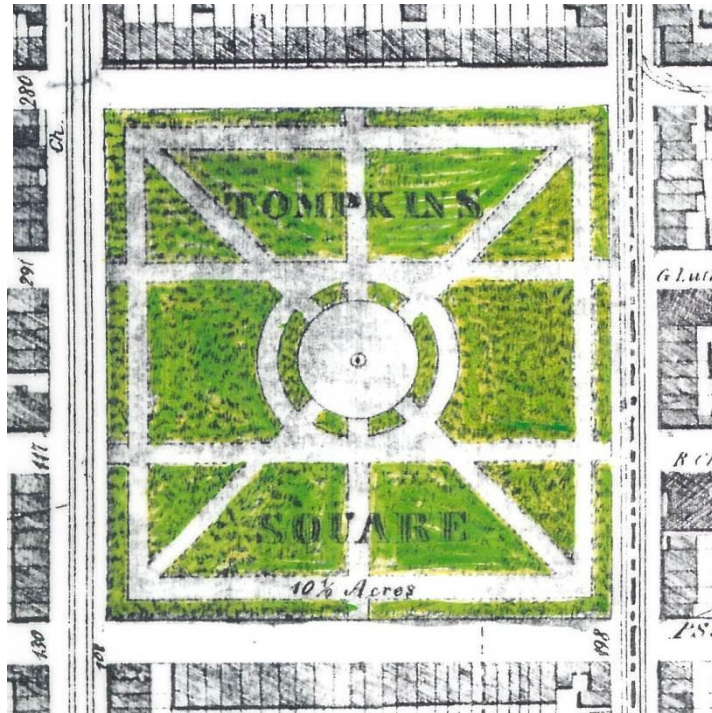
HISTORIC PARK CONTEXT

Restoration Proposal for Tompkins Square
Spring 2012

TOMPKINS SQUARE PARK

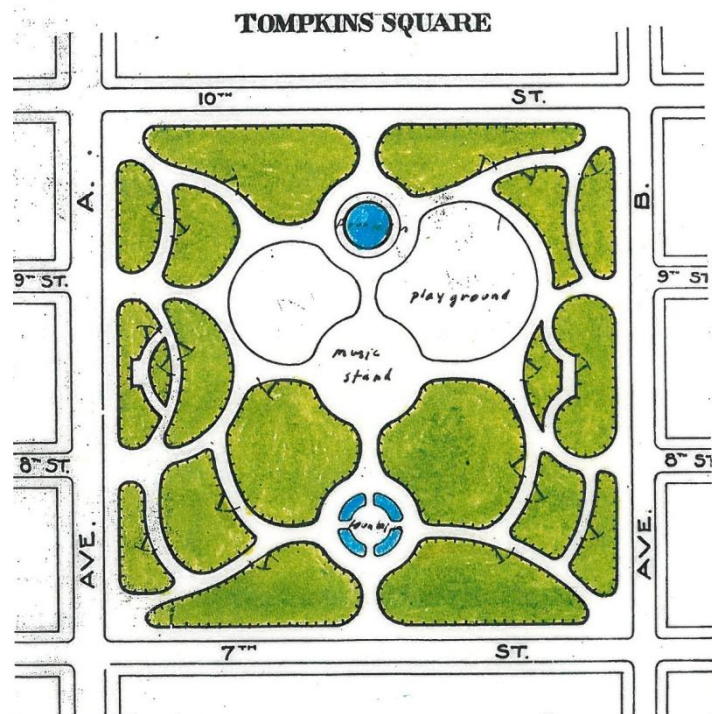
1840s Plan

*The park's first
formal design
plan*



1879 Plan

*The plan which most
closely relates
to the park of
today*



HISTORY

**Restoration Proposal for Tompkins Square
Spring 2012**

TOMPKINS SQUARE PARK



1879 Detail of Tompkins Square in "A Bird's Eye View of Manhattan". From: The Library of Congress

HISTORY

Restoration Proposal for Tompkins Square
Spring 2012

TOMPKINS SQUARE PARK



View of the streetscape along East 10th Street from 1938

HISTORY

Restoration Proposal for Tompkins Square
Spring 2012

TOMPKINS SQUARE PARK



View of the existing streetscape along East 10th Street Spring 2012

East 10th Street



East 7th Street

CURRENT CONDITIONS PARK STREETSCAPE

Restoration Proposal for Tompkins Square
Spring 2012

TOMPKINS SQUARE PARK



East 10th Street

View of curbs, tree pits and pavement along Avenue B



East 7th Street

CURRENT CONDITIONS PARK STREETSCAPE

Restoration Proposal for Tompkins Square
Spring 2012

TOMPKINS SQUARE PARK



View of existing paving and tree pits in pavement at the central oval

East 10th Street



East 7th Street

CURRENT CONDITIONS PARK INTERIOR PAVEMENTS

Restoration Proposal for Tompkins Square
Spring 2012

TOMPKINS SQUARE PARK



View of existing fencing at lawn panels and behind all benches

East 10th Street



East 7th Street

CURRENT CONDITIONS PARK INTERIOR FENCING

Restoration Proposal for Tompkins Square
Spring 2012

TOMPKINS SQUARE PARK



View of existing exercise area at East 10th Street & Avenue A

East 10th Street

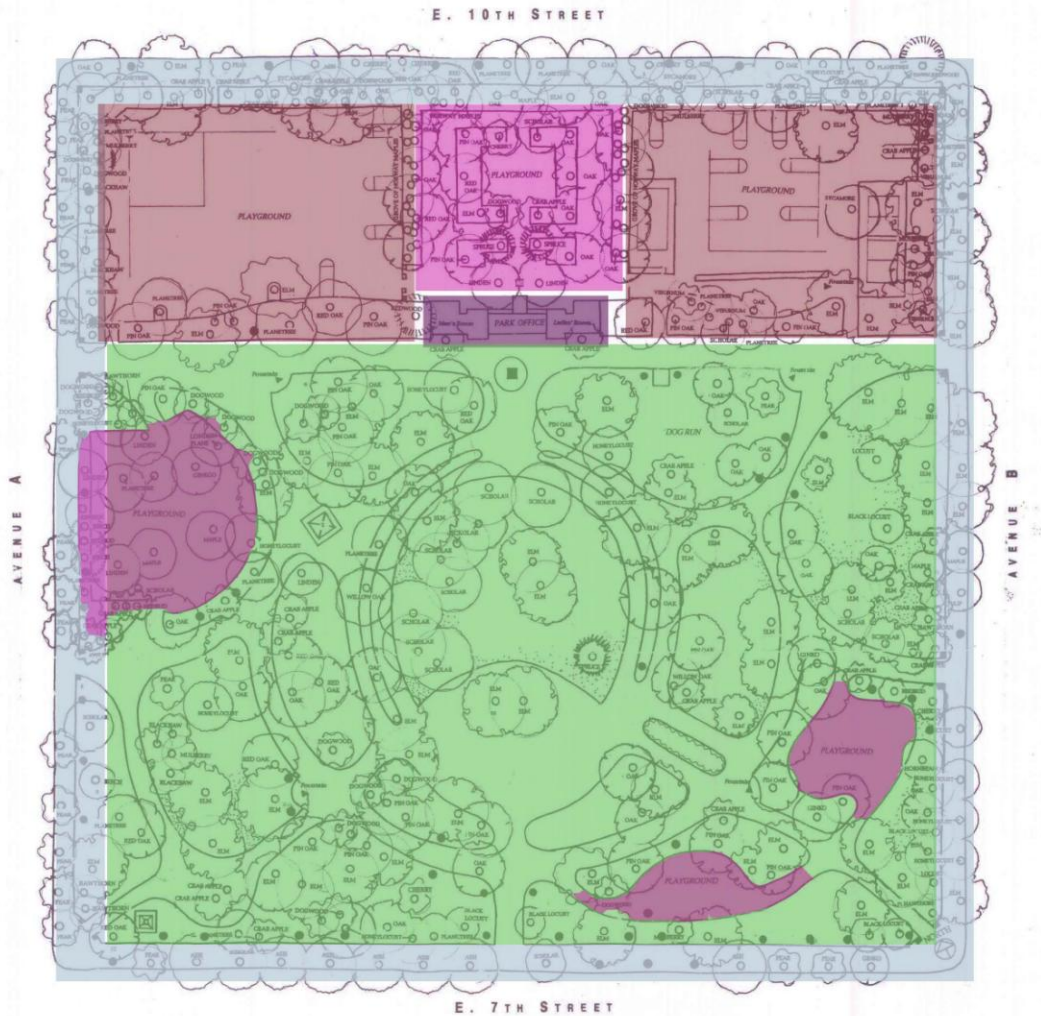


East 7th Street

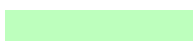
CURRENT CONDITIONS
ACTIVE RECREATION ZONE

Restoration Proposal for Tompkins Square
Spring 2012

TOMPKINS SQUARE PARK



Streetscape and Tree Preservation



Horticulture and Tree Preservation



Playgrounds



Active Recreation Areas



Park Building

KEY TO POTENTIAL PROJECTS

**Restoration Proposal for Tompkins Square
Spring 2012**

TOMPKINS SQUARE PARK

PHASE I - STREETScape

Restore the park perimeter and entrances, reconstruct pavement, curbs and fencing, install tree guards, prune and plant trees. Link to the park's history and surrounding gardens.



PHASE II - PARK INTERIOR

Tree preservation and strategic infill planting, improve soils and drainage, new permeable pavement, ornamental fencing and granite curbs. Restore lawns, reduce rat habitat, improve lighting, conserve park monuments.



PHASE III - ACTIVE RECREATION AREAS & PARK BUILDING

Improve pavements and fencing, install color seal coat, new outdoor fitness equipment, bike share station, improve conditions for shade trees. Renovate comfort station and maintenance area.

