

Proposed Emergency Ventilation Plant for the

8th Avenue Subway Line

(between West 4th Street & 14th Street Stations)

and

7th Avenue Subway Line

(between Christopher Street & 14th Street Stations)

June 22, 2009

Background Information

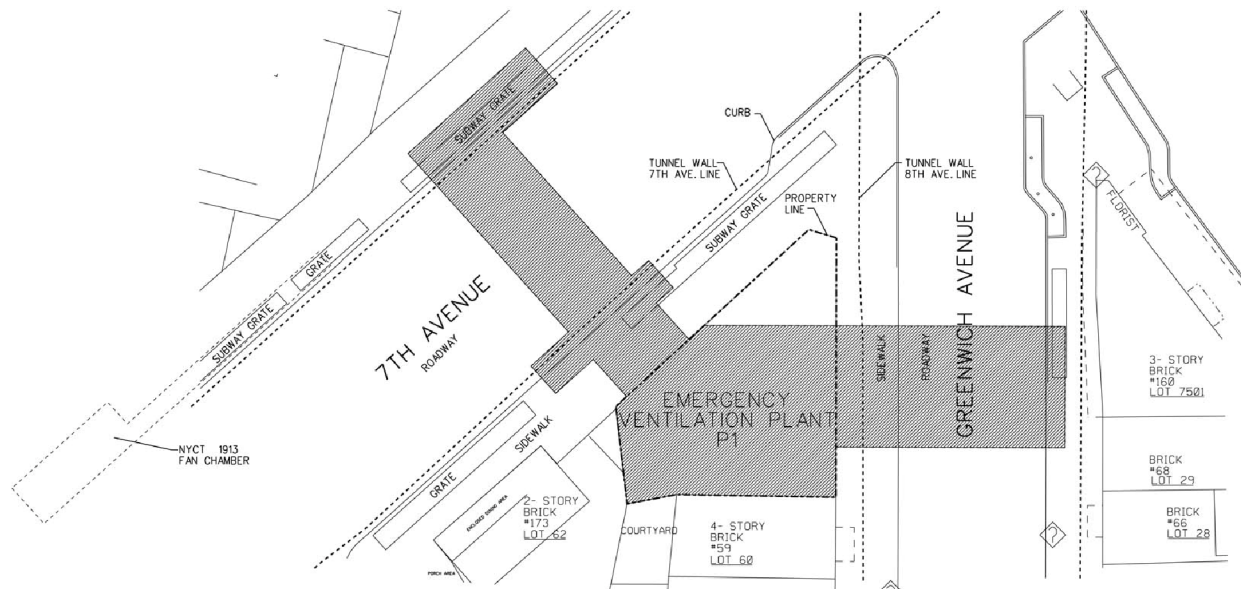
To construct an emergency vent plant to serve the:

- Ø Eighth Avenue Subway Line between the West 4th & 14th Street Stations, and to the extent feasible/cost-effective, also provide service to the:
- Ø Seventh Avenue Subway Line between Christopher Street and 14th Street

Project Purpose & Need

∅ Emergency & Life Safety Requirements

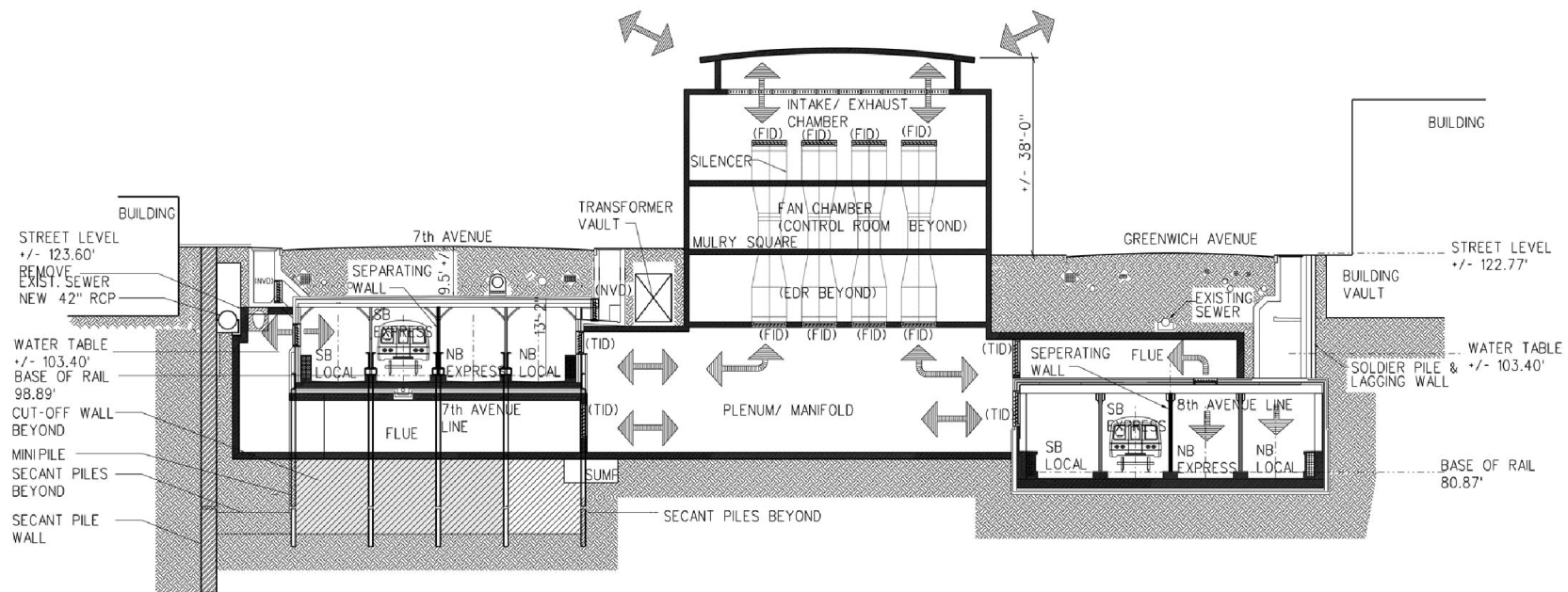
Preliminary Conceptual Design Site Plan



SITE PLAN

VENTILATION PLANT P1
OPTION 1
SCALE 0 8 16 FT.

Preliminary Conceptual Design Section



SECTION BB

VENTILATION PLANT P1
OPTION 1
SCALE 0 6 12 FT.

Design Phase - Status

- n Conceptual Design - Completed
- n Preliminary Engineering – June 2009
- n Final Engineering – November 2009**

** Projected date

Project View Forward*

- n Bidding Process: January 2010 thru May 2010
- n Construction Award: June 2010
- n Project Completion: June 2013

*Projected Dates

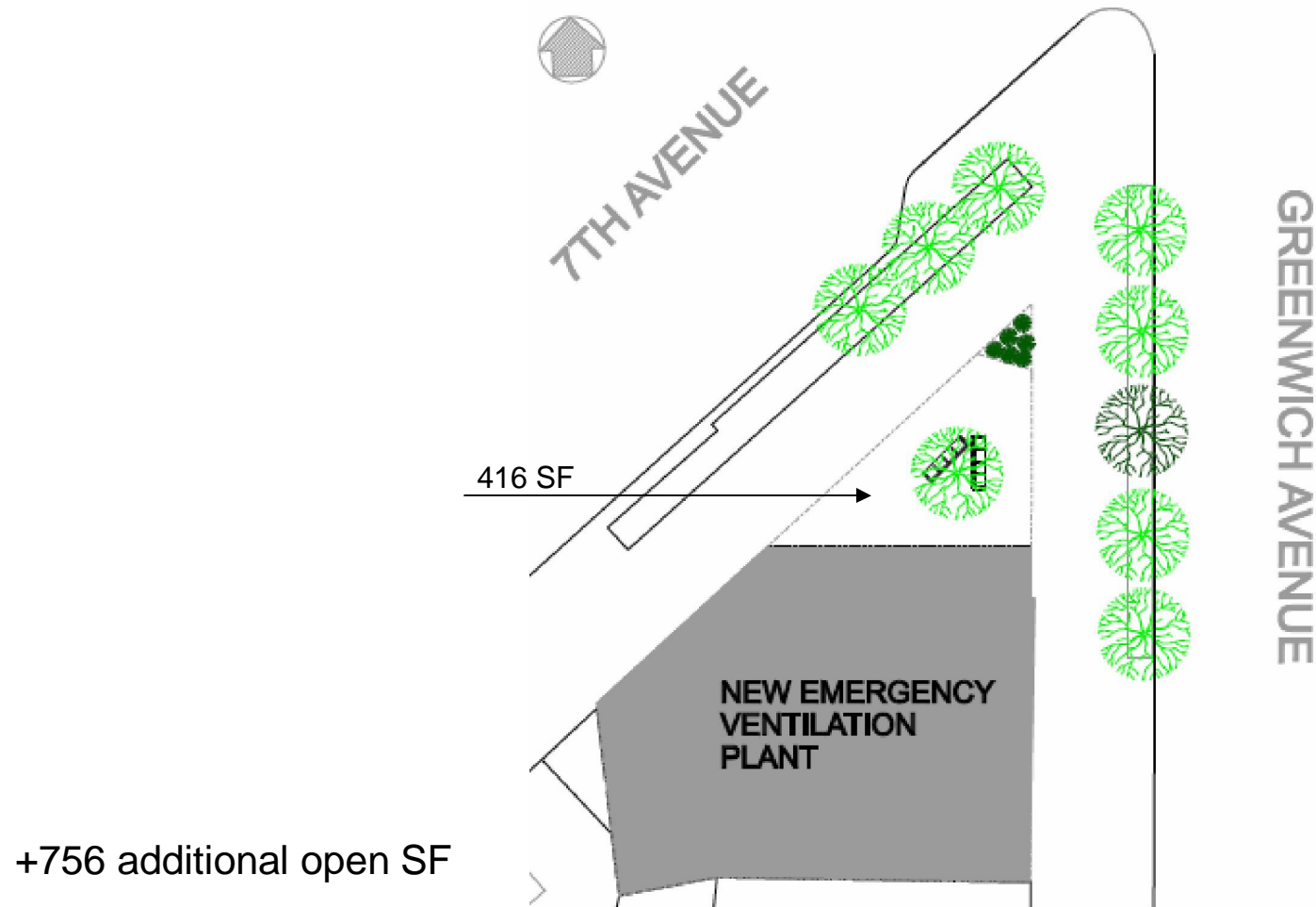
MTA NYCT Eighth Avenue Emergency Ventilation Facility

FACILITY DESIGN & FEASIBLE OPTIONS

Architectural Introduction
Judith Kunoff, Chief Architect

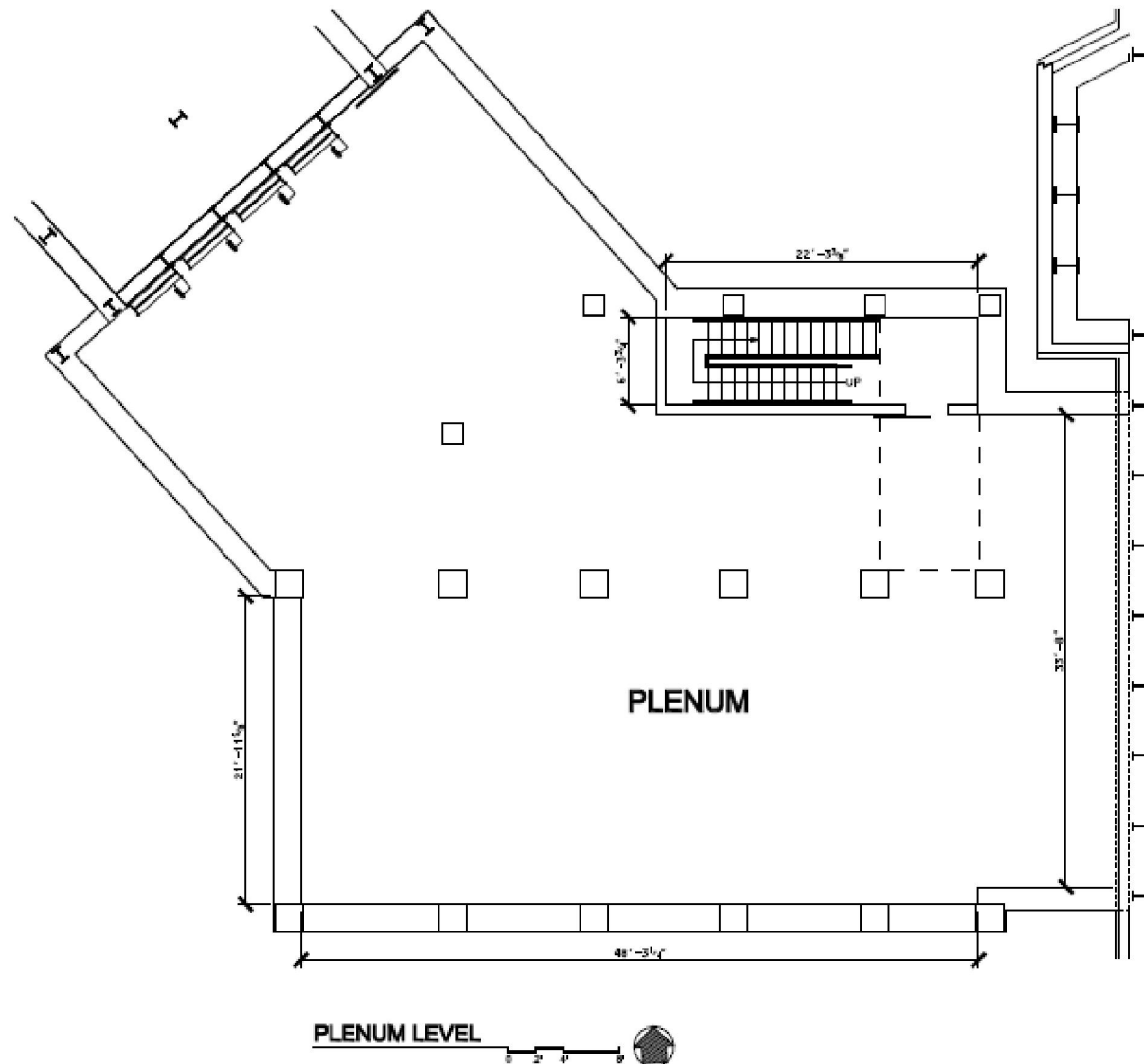
MTA NYCT Eighth Avenue Emergency Ventilation Facility

SITE



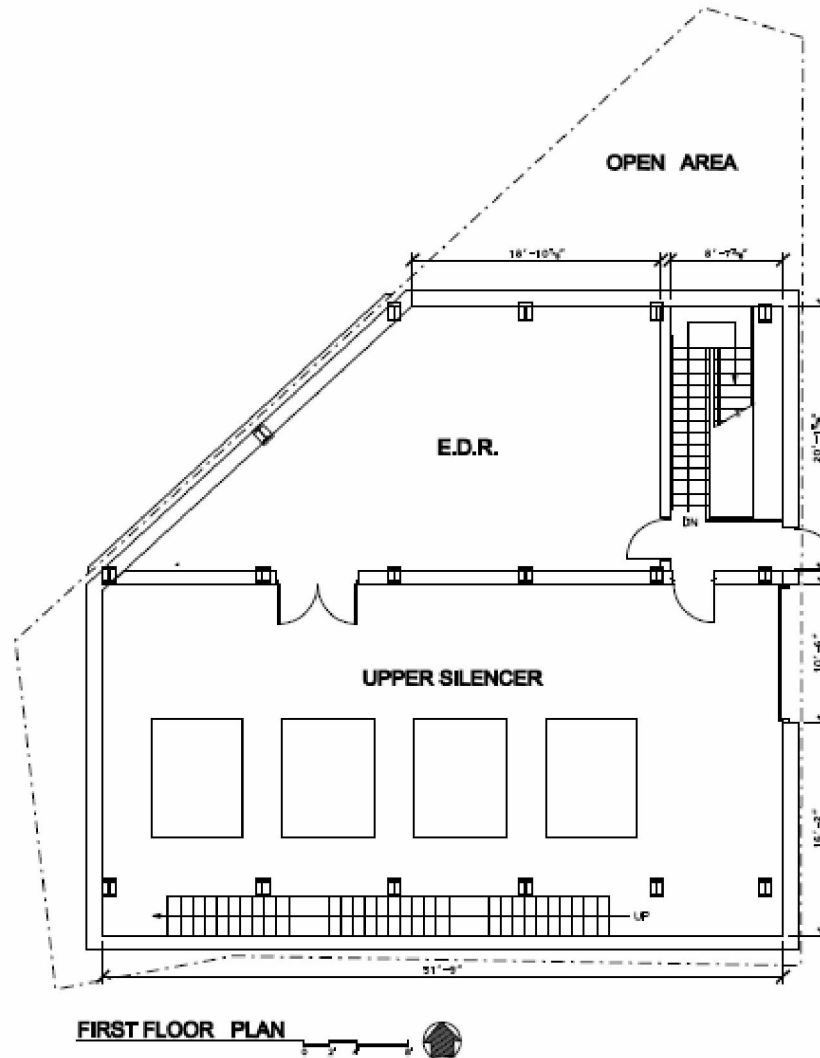
MTA NYCT Eighth Avenue Emergency Ventilation Facility

PLENUM LEVEL PLAN



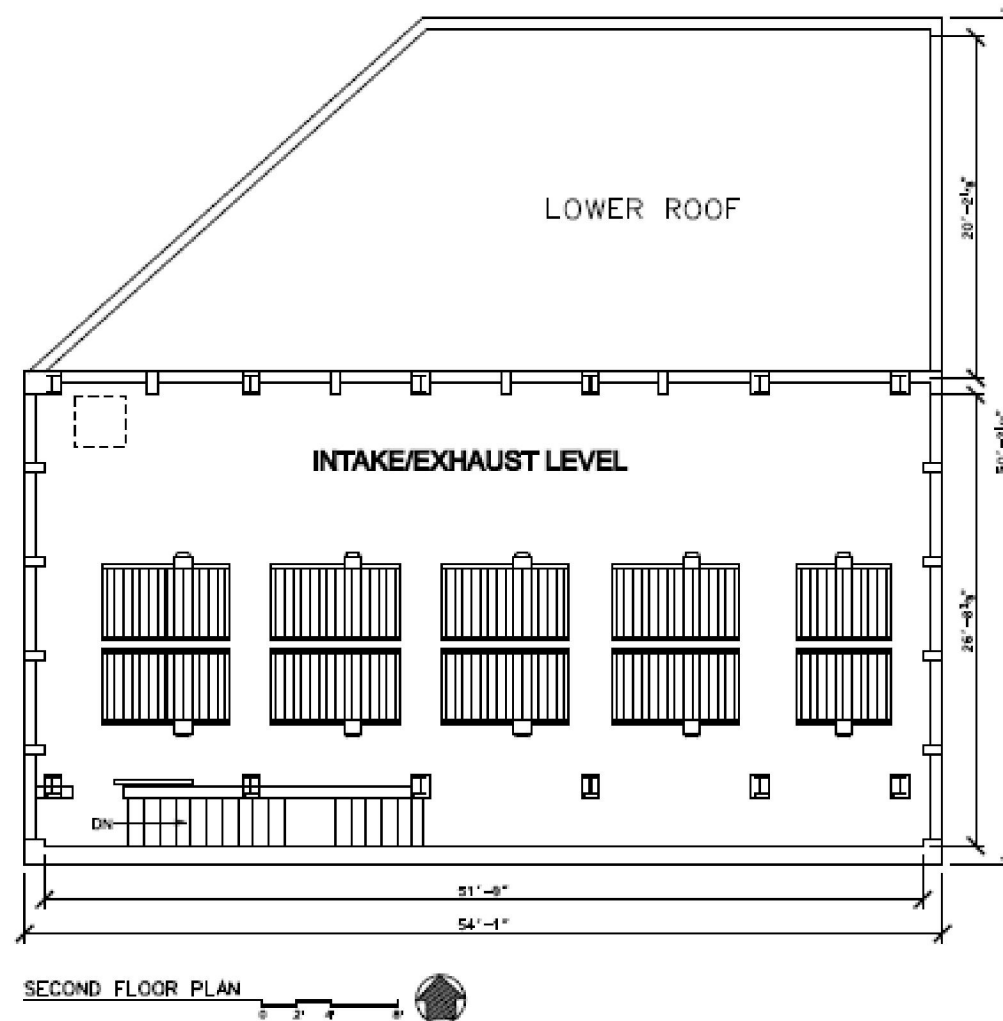
MTA NYCT Eighth Avenue Emergency Ventilation Facility

FAN CHAMBER PLAN



MTA NYCT Eighth Avenue Emergency Ventilation Facility

INTAKE / EXHAUST PLAN



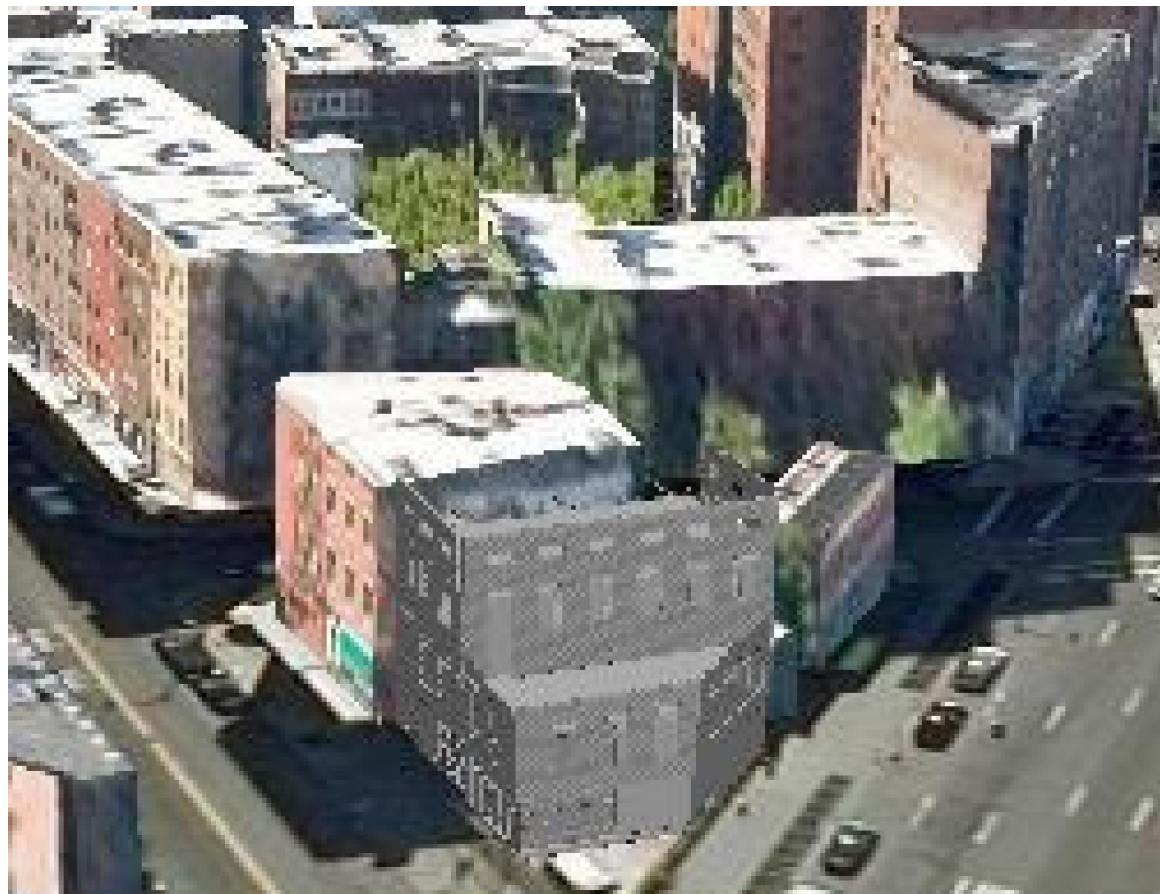
MTA NYCT Mulry Square Fan Plant

MASSING



MTA NYCT Mulry Square Fan Plant

MASSING



MTA NYCT Mulry Square Fan Plant

MASSING



MTA NYCT Eighth Avenue Emergency Ventilation Facility

OPTION 1



MTA NYCT Eighth Avenue Emergency Ventilation Facility

OPTION 2



MTA NYCT Eighth Avenue Emergency Ventilation Facility

Facadism



MTA NYCT Eighth Avenue Emergency Ventilation Facility

OPTION 3



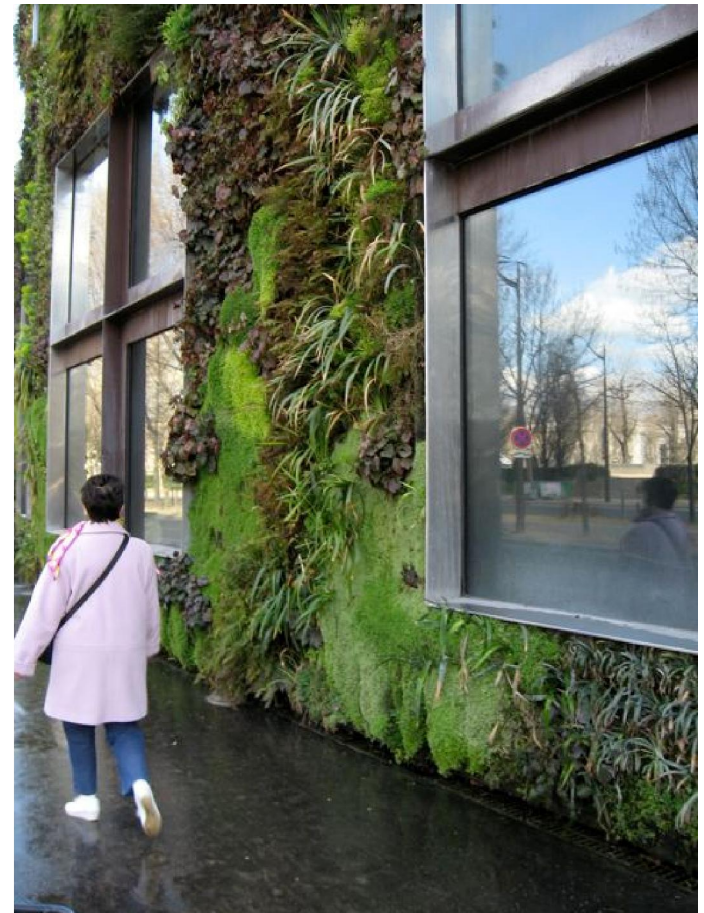
MTA NYCT Eighth Avenue Emergency Ventilation Facility

Vertical Gardens



MTA NYCT Eighth Avenue Emergency Ventilation Facility

“Tiles for America”



MTA NYCT Eighth Avenue Emergency Ventilation Facility

“Tiles for America”



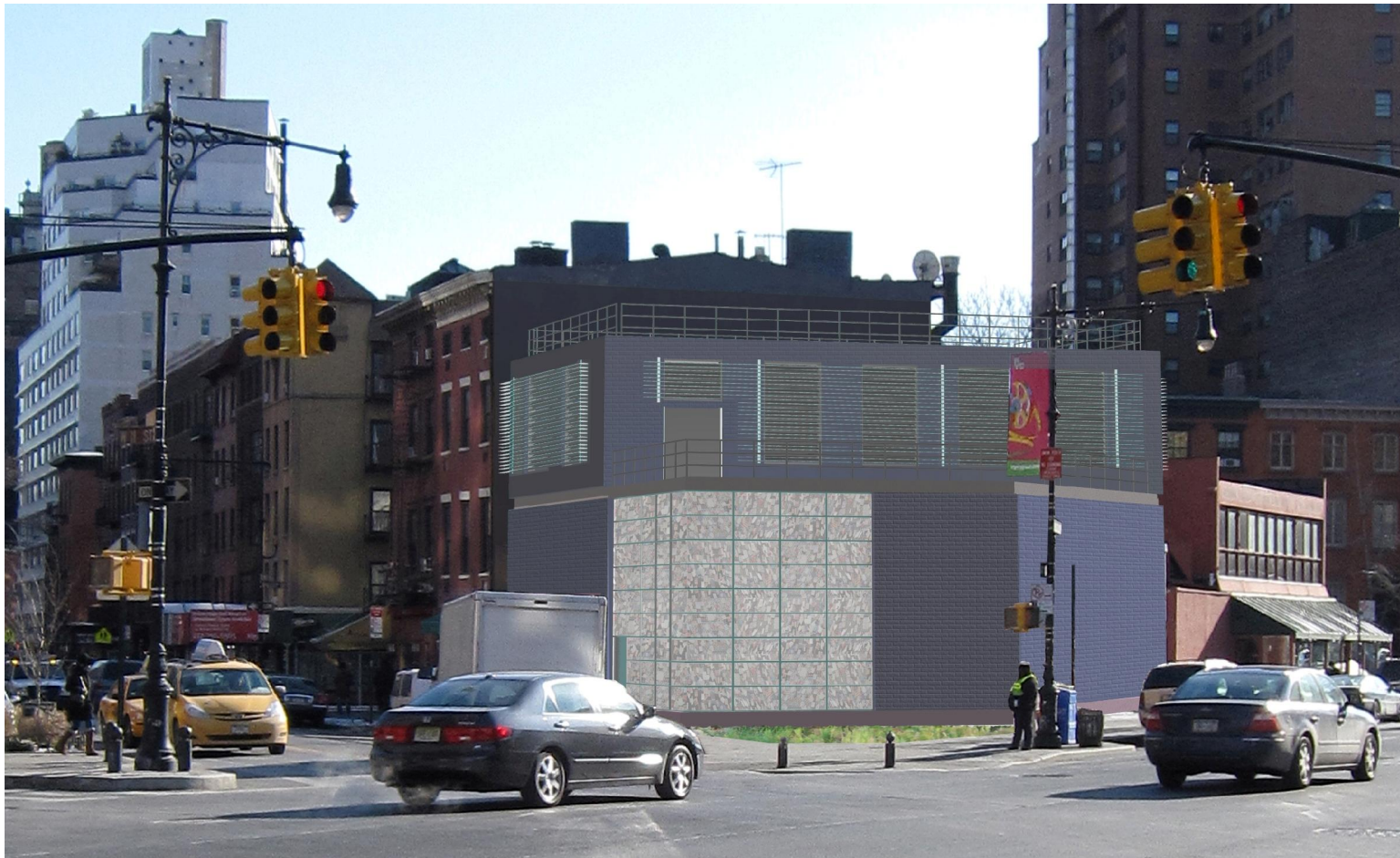
MTA NYCT Eighth Avenue Emergency Ventilation Facility

“Tiles for America” – Inlay Band



MTA NYCT Eighth Avenue Emergency Ventilation Facility

“Tiles for America” Behind Glass



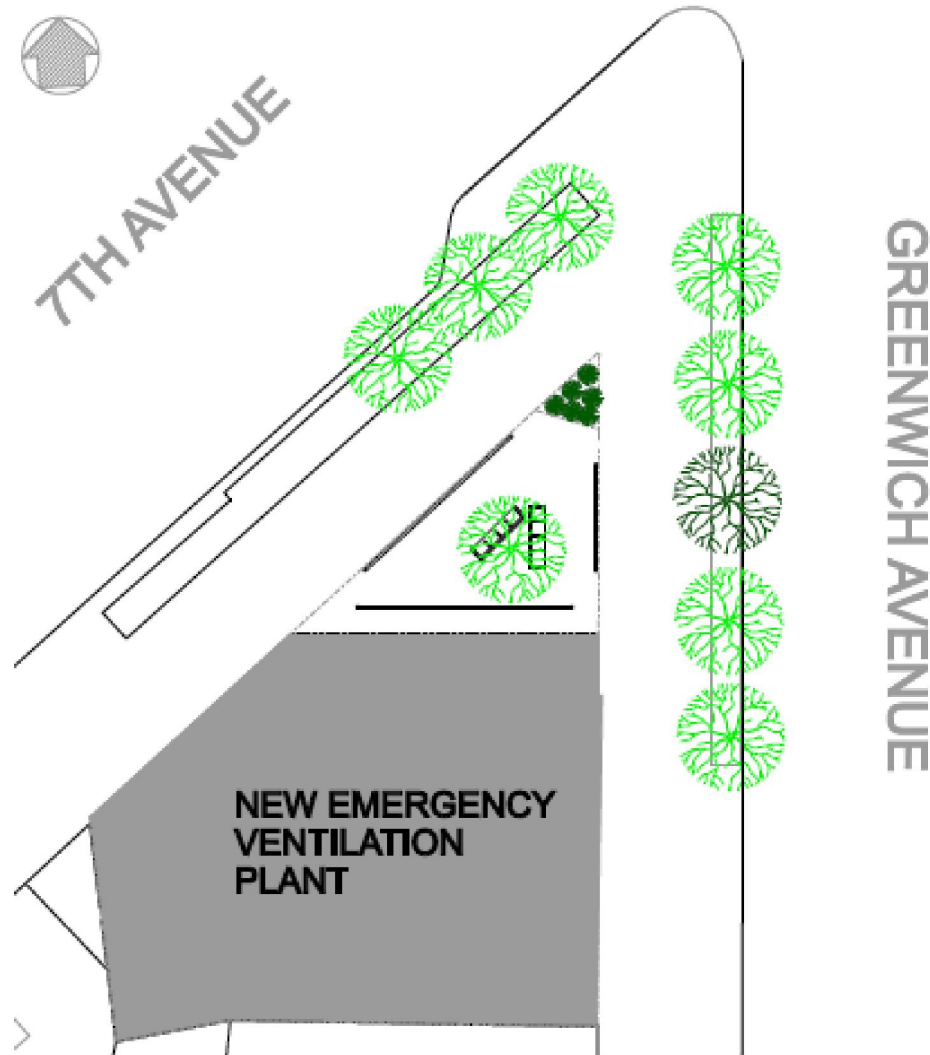
MTA NYCT Eighth Avenue Emergency Ventilation Facility

“Tiles for America” – Chain Link



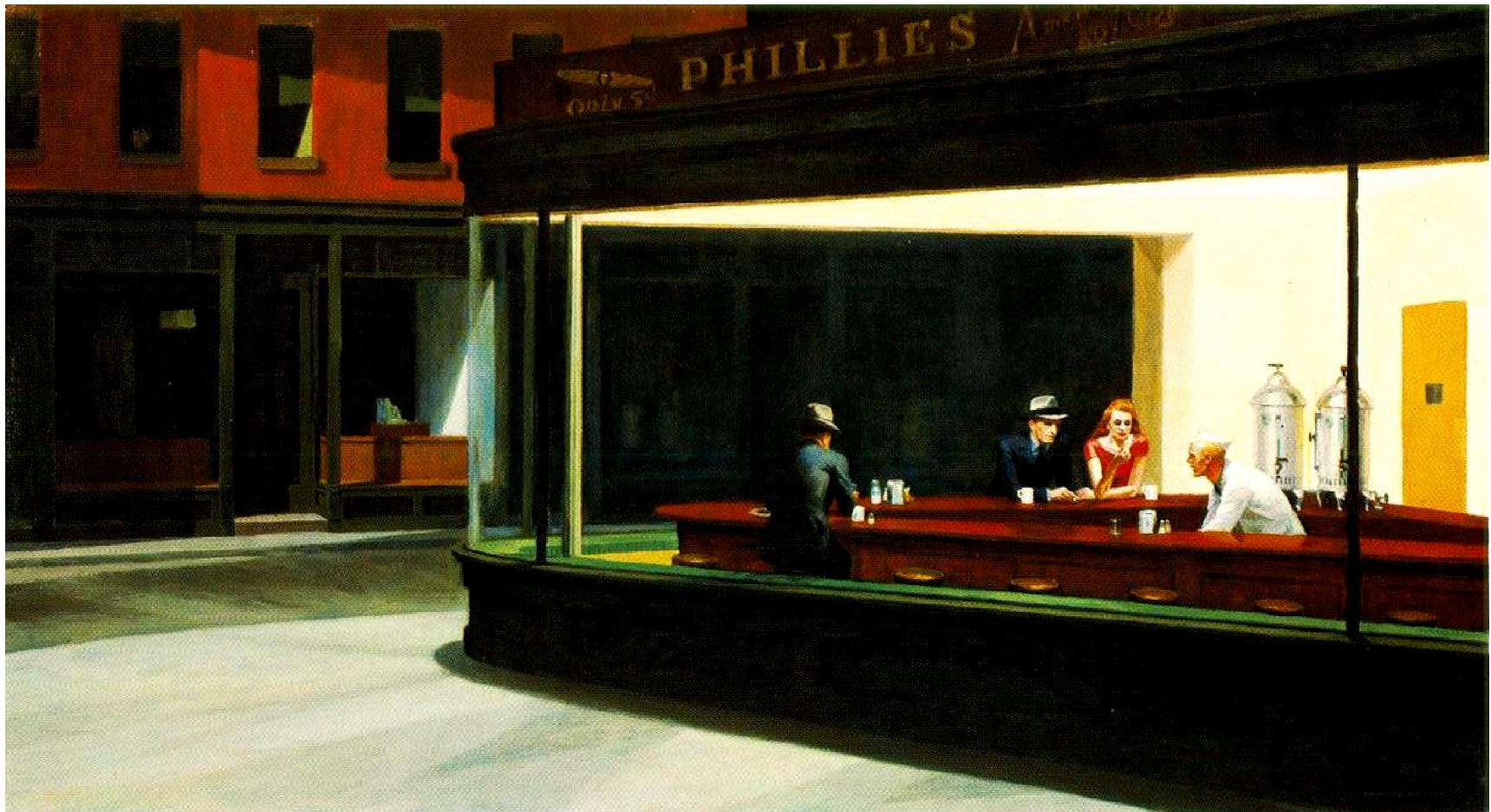
MTA NYCT Eighth Avenue Emergency Ventilation Facility

“Tiles for America”



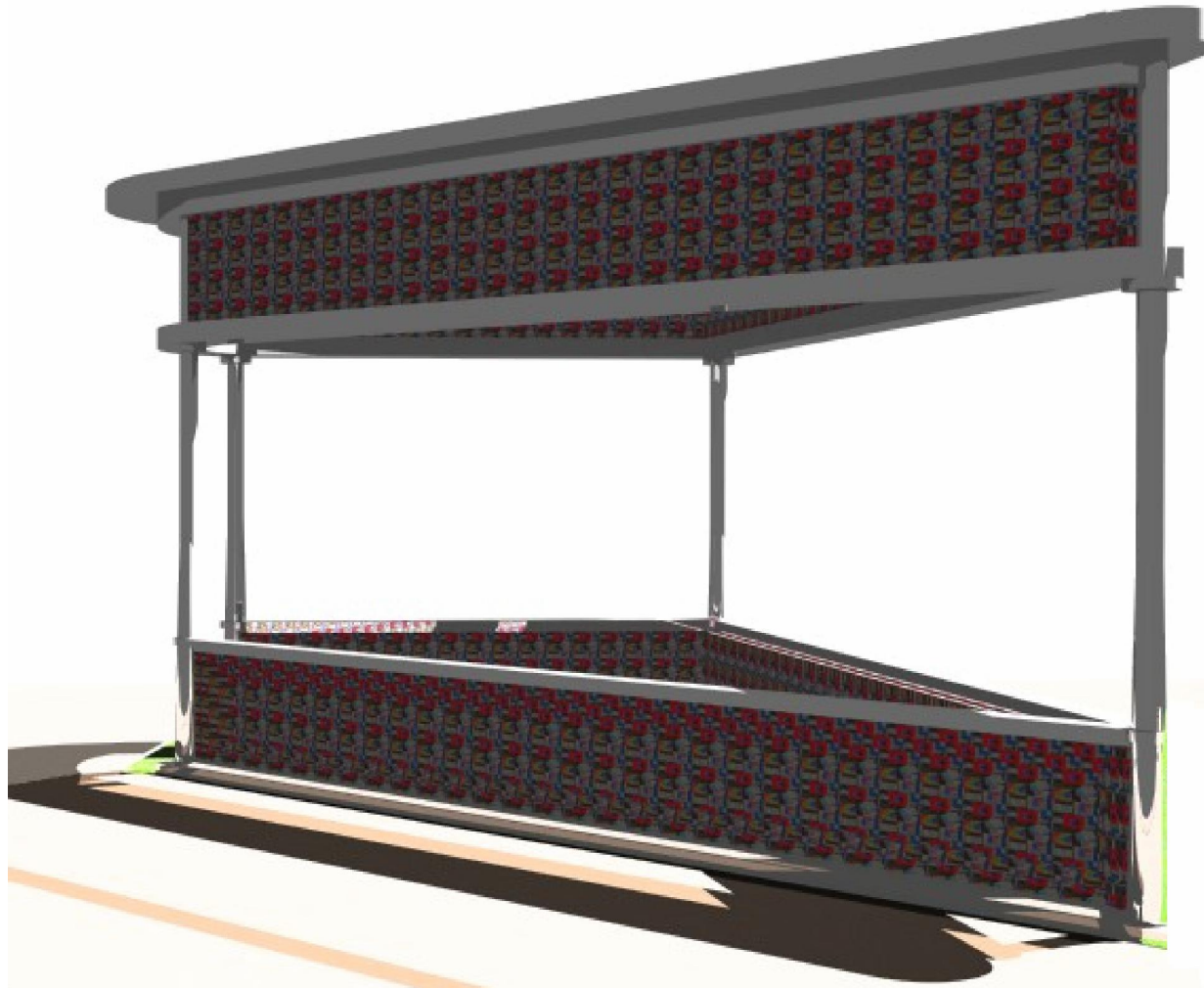
MTA NYCT Eighth Avenue Emergency Ventilation Facility

“Tiles for America” – Nighthawks



MTA NYCT Eighth Avenue Emergency Ventilation Facility

“Tiles for America” – Nighthawks



MTA NYCT Eighth Avenue Emergency Ventilation Facility

“Tiles for America” – Nighthawks



COMMUNITY DESIGN INPUT

- Solicit Feedback Comments via CB 2 Website and Mail
- Community Board Meeting to Review Comments
- Public Comments to be incorporated in Design where Feasible

We want to hear from you
Please send us your comments

To submit comments via e-mail, visit:
www.cb2manhattan.org or

Write to: Eighth Avenue Ventilation Facility
Project, MTA NYC Transit Government and
Community Relations – D17.1 40,
2 Broadway, New York, NY 10004

Comments may be submitted before July 15

EIS on the MTA Website

[www.mta.info/mta/planning/ventplant/
deis.htm](http://www.mta.info/mta/planning/ventplant/deis.htm)