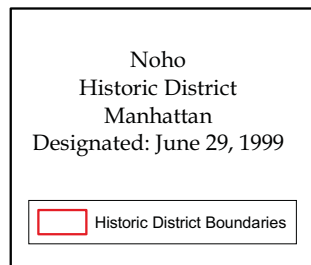
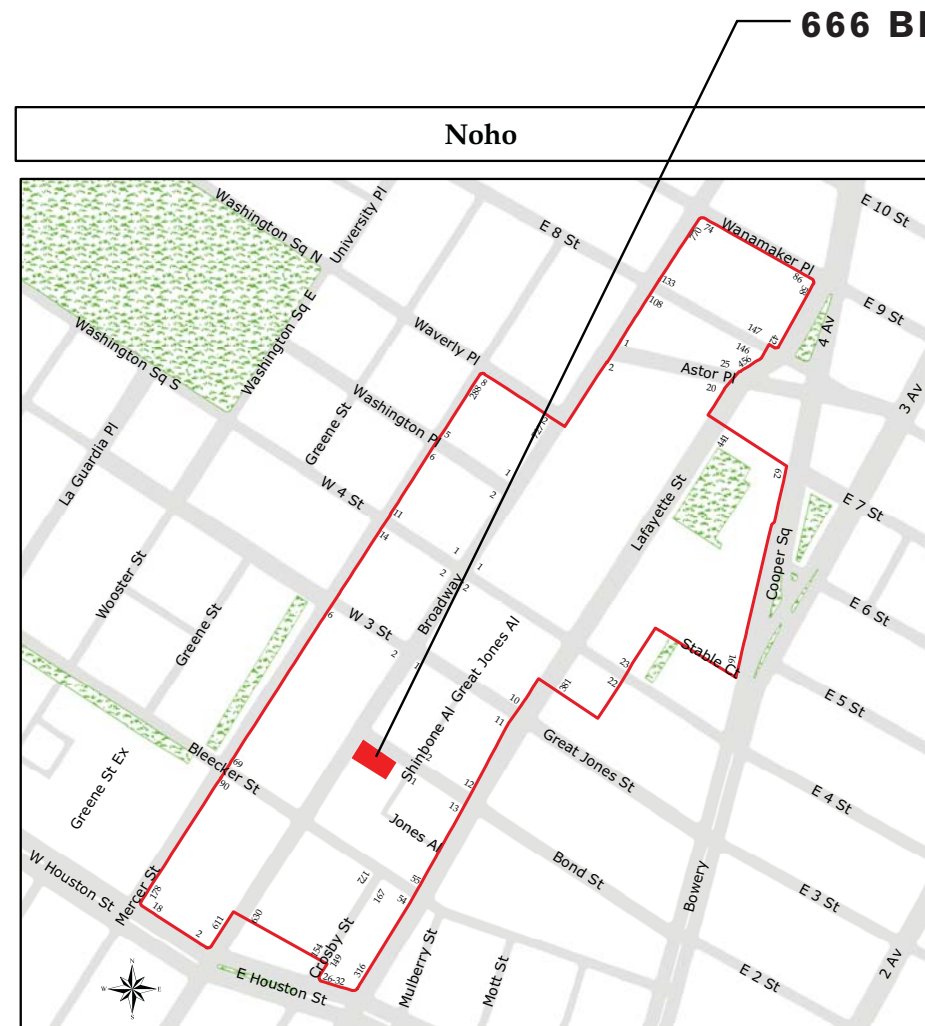


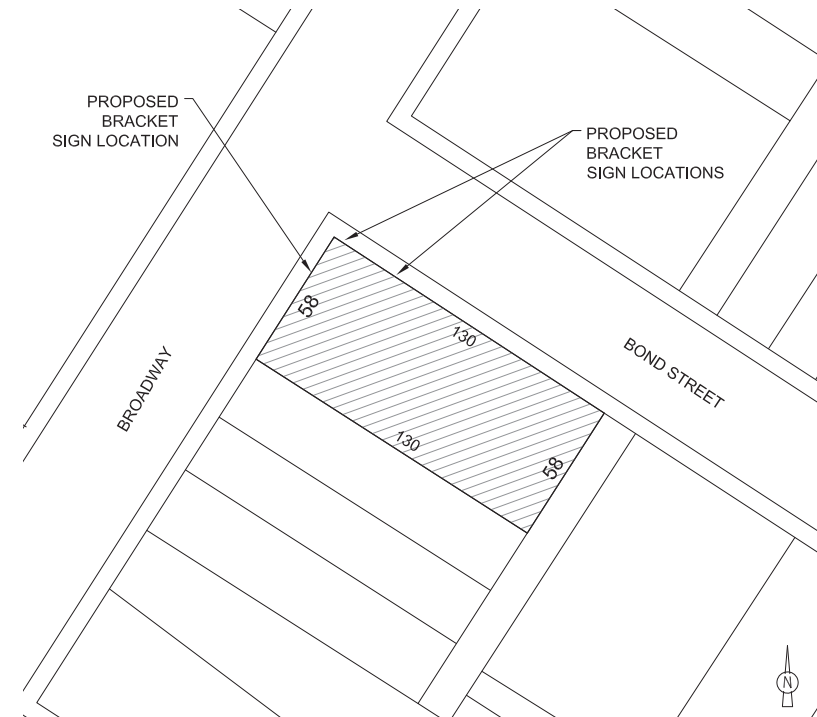
666 BROADWAY | SIGNAGE (#16-5794)



LPC DESIGNATION MAP
NOHO HISTORIC DISTRICT



DOB TAX MAP



ADDRESS 666 BROADWAY
NEW YORK, NY 10012

BIN	1008455
MAP	MI-5B
LOT	7501
BLOCK	529
DISTRICT	NOHO
CB	MANHATTAN CB 2

ARCHITECT:
caseworks
architect, PLLC

80 5th Avenue, Suite 1201
New York, NY 10011
t: 212 594 9112
f: 212 695 5767

PROJECT NAME:
666 BROADWAY SIGNAGE

666 Broadway,
New York, NY 10012

PROJECT #: 1406-06

DATE: 05.12.15

SCALE: _____ AS NOTED

DRAWING SHEET NO:

SG-001.00

Copyright © 2015 by caseworks architect, PLLC
All rights reserved

666 BROADWAY | SIGNAGE (#16-5794)



1940s TAX PHOTO
BROADWAY & BOND STREET



1980s TAX PHOTO
BROADWAY & BOND STREET



1991 DESIGNATION PHOTO
BROADWAY & BOND STREET

ARCHITECT:
caseworks
architect, PLLC

80 5th Avenue, Suite 1201
New York, NY 10011
t: 212 594 9112
f: 212 695 5767

PROJECT NAME:
666 BROADWAY SIGNAGE

666 Broadway,
New York, NY 10012

PROJECT #: 1406-06
DATE: 05.12.15
SCALE: AS NOTED
DRAWING SHEET NO:

SG-002.00

Copyright © 2015 by caseworks architect, PLLC
All rights reserved

666 BROADWAY | SIGNAGE (#16-5794)



EXISTING CONDITIONS
BOND STREET FACADE



EXISTING CONDITIONS
BOND STREET FACADE

ARCHITECT:
caseworks
architect, PLLC

80 5th Avenue, Suite 1201
New York, NY 10011
t: 212 594 9112
f: 212 695 5767

PROJECT NAME:
666 BROADWAY SIGNAGE

666 Broadway,
New York, NY 10012

PROJECT #:	1406-06
DATE:	05.12.15
SCALE:	AS NOTED

DRAWING SHEET NO:

SG-003.00

Copyright © 2015 by caseworks architect, PLLC
All rights reserved

666 BROADWAY | SIGNAGE (#16-5794)



EXISTING CONDITIONS
BOND STREET & BROADWAY



EXISTING CONDITIONS
BROADWAY FACADE

ARCHITECT:
caseworks
architect, PLLC

80 5th Avenue, Suite 1201
New York, NY 10011
t: 212 594 9112
f: 212 695 5767

PROJECT NAME:
666 BROADWAY SIGNAGE

666 Broadway,
New York, NY 10012

PROJECT #:	1406-06
DATE:	05.12.15
SCALE:	AS NOTED
DRAWING SHEET NO:	

SG-004.00

Copyright © 2015 by caseworks architect, PLLC
All rights reserved

666 BROADWAY | SIGNAGE (#16-5794)



PROPOSED BOND STREET SIGNAGE NOTES

PROPOSED SQUARE FOOTAGE: (2) BRACKET SIGN TYPE A: 1'-3" W x 6-8" H = 8.3 SF PER SIDE
X (2 SIDES / SIGN) = 16.6 SF PER SIGN
X (2 SIGNS) = **33.2 SF PROPOSED BOND STREET SIGNAGE**

EXISTING BOND ST FRONTAGE: 130 LF

ALLOWABLE BOND ST SIGNAGE: 130 LF x 6 = 780 SF (PER ZR 42-531)

EXISTING BOND ST SIGNAGE: (4'-0" x 4'-2") + (4'-0" x 4'-2") + (4'-0" x 3'-10) = 48.7 SF TD BANK
(8" x 4'-2") + (8" x 4'-2") + (8" x 3'-10) = 8.0 SF TD BANK
2 x (1'-6" x 4'-0) = 12.0 SF YOGA VIDA

PROPOSED BOND ST SIGNAGE: (SEE ABOVE) = **33.2 SF** WINGS GROUP

EXISTING + PROPOSED SIGNAGE:
48.7 SF + 8.0 SF + 12.0 SF + 33.2 SF = 101.9 SF < 780 SF ALLOWED = **OK**

ARCHITECT:
caseworks
architect, PLLC
80 5th Avenue, Suite 1201
New York, NY 10011
t: 212 594 9112
f: 212 695 5767

PROJECT NAME:
666 BROADWAY SIGNAGE
666 Broadway,
New York, NY 10012

PROJECT #: 1406-06
DATE: 05.12.15
SCALE: AS NOTED
DRAWING SHEET NO:

SG-101.00

Copyright © 2015 by caseworks architect, PLLC
All rights reserved

666 BROADWAY | SIGNAGE (#16-5794)



PROPOSED BRACKET SIGNS
BOND STREET

ARCHITECT:
caseworks
architect, PLLC

80 5th Avenue, Suite 1201
New York, NY 10011
t: 212 594 9112
f: 212 695 5767

PROJECT NAME:
666 BROADWAY SIGNAGE

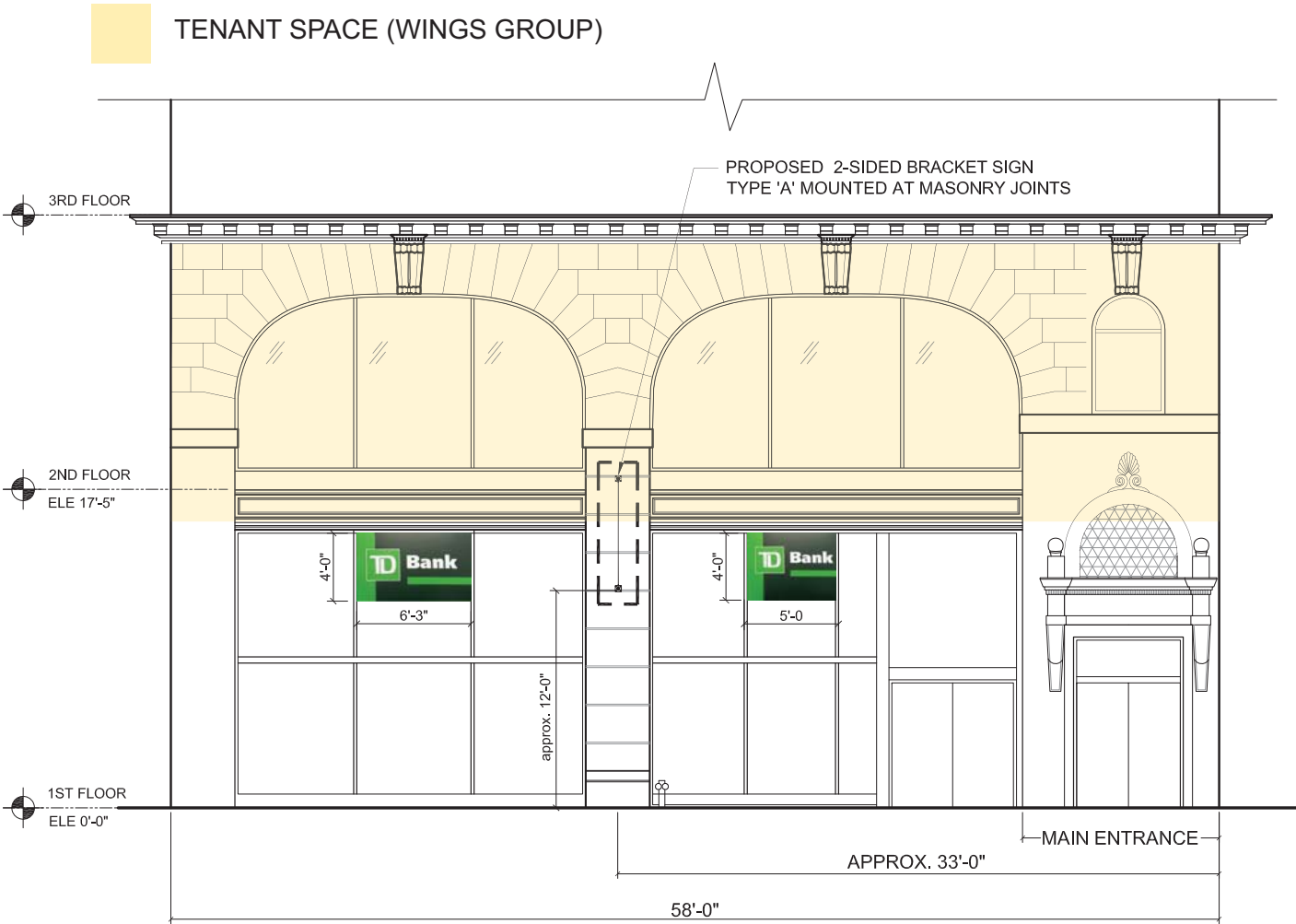
666 Broadway,
New York, NY 10012

PROJECT #: 1406-06
DATE: 05.12.15
SCALE: AS NOTED
DRAWING SHEET NO:

SG-102.00

Copyright © 2015 by caseworks architect, PLLC
All rights reserved

666 BROADWAY | SIGNAGE (#16-5794)



PROPOSED BOND STREET SIGNAGE NOTES

PROPOSED SQUARE FOOTAGE: (1) BRACKET SIGN TYPE A: 1'-3" W x 6'-8" H = 8.3 SF PER SIDE
X (2 SIDES / SIGN) = 16.6 SF PER SIDE
X (1 SIGN) = **16.6 SF PROPOSED BROADWAY SIGNAGE**

EXISTING BROADWAY FRONTAGE: 57 LF

ALLOWABLE BROADWAY SIGNAGE: 58 LF x 6 = **348 SF** (PER ZR 42-531)

EXISTING BROADWAY SIGNAGE: (4'-0" x 6'-6") + (4'-0" x 5'-0") = **46.0 SF** TD BANK

PROPOSED BROADWAY SIGNAGE: (SEE ABOVE) = **16.6 SF** WINGS GROUP

EXISTING + PROPOSED SIGNAGE:
46.0 SF + 16.6 SF = **62.6 SF < 348 SF ALLOWED = OK**

ARCHITECT:
caseworks
architect, PLLC
80 5th Avenue, Suite 1201
New York, NY 10011
t: 212 594 9112
f: 212 695 5767

PROJECT NAME:
666 BROADWAY SIGNAGE
666 Broadway,
New York, NY 10012

PROJECT #: 1406-06
DATE: 05.12.15
SCALE: AS NOTED
DRAWING SHEET NO:

SG-103.00

Copyright © 2015 by caseworks architect, PLLC
All rights reserved

666 BROADWAY | SIGNAGE (#16-5794)



PROPOSED BRACKET SIGNS
BROADWAY & BOND STREET

ARCHITECT:
caseworks
architect, PLLC

80 5th Avenue, Suite 1201
New York, NY 10011
t: 212 594 9112
f: 212 695 5767

PROJECT NAME:
666 BROADWAY SIGNAGE

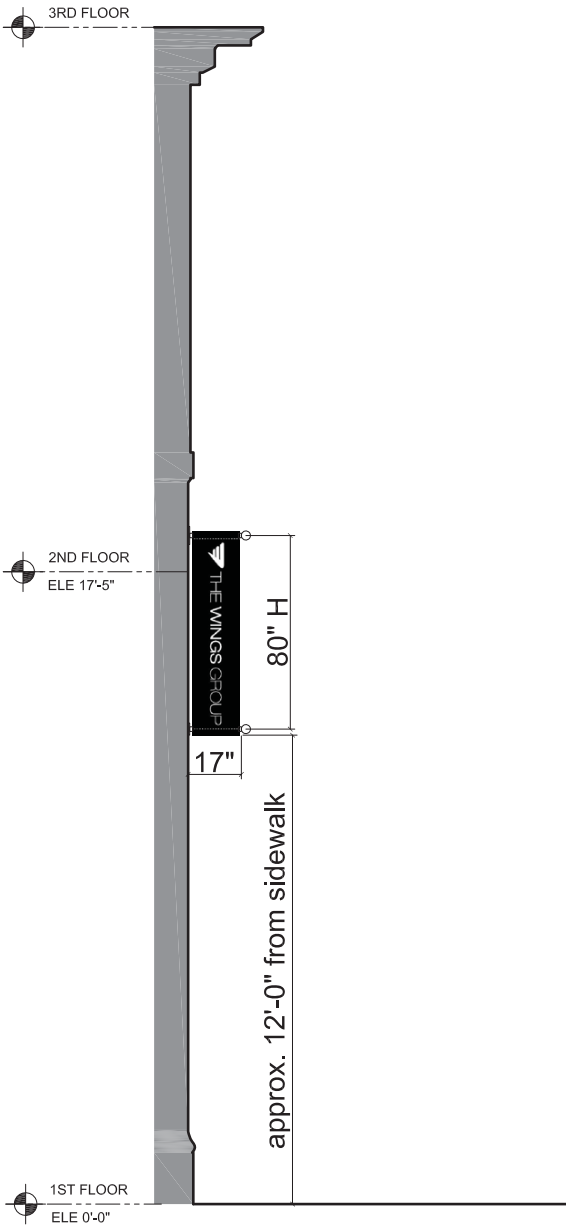
666 Broadway,
New York, NY 10012

PROJECT #:	1406-06
DATE:	05.12.15
SCALE:	AS NOTED
DRAWING SHEET NO:	

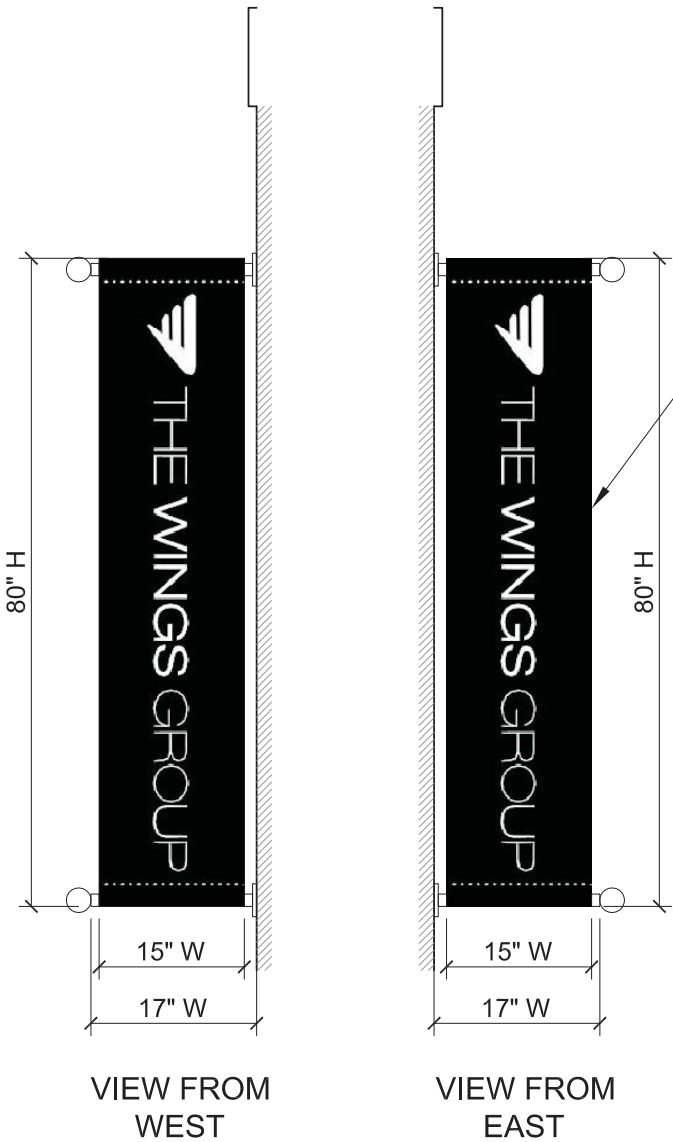
SG-104.00

Copyright © 2015 by caseworks architect, PLLC
All rights reserved

666 BROADWAY | SIGNAGE (#16-5794)



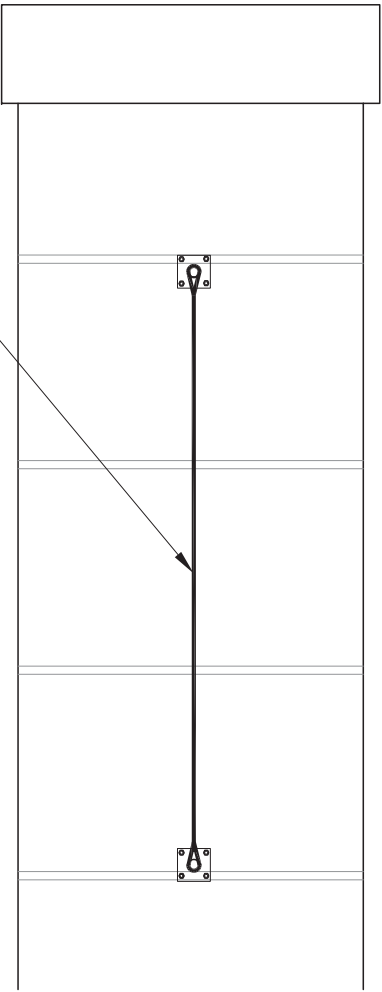
SECTION - BRACKET SIGN (TYP)



ELEVATIONS - BRACKET SIGN (TYP)

DOUBLE-SIDED BANNER
ON BLACK SUNBRELLA
MATERIAL w/ GRAPHICS
SCREENED IN WHITE

3" SLEEVE AT TOP &
BOTTOM (TYP)



ARCHITECT:
caseworks
architect, PLLC

80 5th Avenue, Suite 1201
New York, NY 10011
t: 212 594 9112
f: 212 695 5767

PROJECT NAME:
666 BROADWAY SIGNAGE

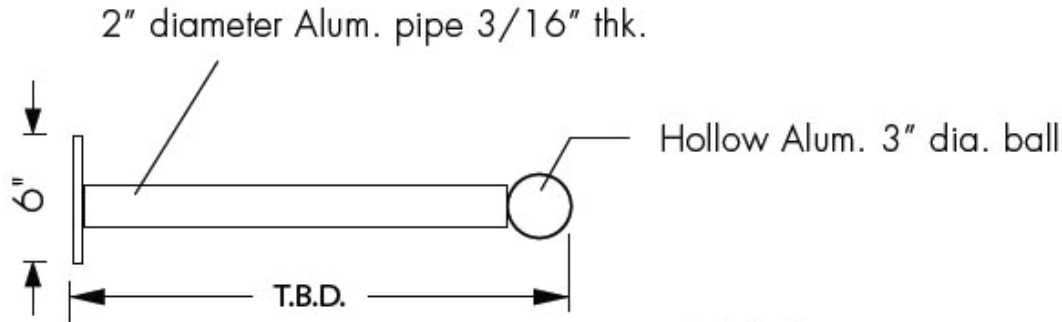
666 Broadway,
New York, NY 10012

PROJECT #:	1406-06
DATE:	05.12.15
SCALE:	AS NOTED
DRAWING SHEET NO:	

SG-501.00

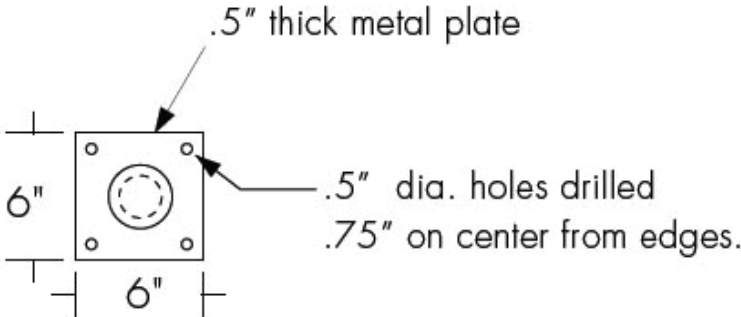
Copyright © 2015 by caseworks architect, PLLC
All rights reserved

666 BROADWAY | SIGNAGE (#16-5794)



TOP VIEW

Welded construction,
painted black finish



FRONT VIEW

Welded construction,
painted black finish

DETAILS - BRACKET SIGN (TYP)

ARCHITECT:

caseworks

architect, PLLC

80 5th Avenue, Suite 1201
New York, NY 10011
t: 212 594 9112
f: 212 695 5767

PROJECT NAME:

666 BROADWAY SIGNAGE

666 Broadway,
New York, NY 10012

PROJECT #:

1406-06

DATE:

05.12.15

SCALE:

AS NOTED

DRAWING SHEET NO:

SG-502.00