

LEGEND & GENERAL NOTES

- EXISTING PARTITION TO REMAIN
- REMOVE EXISTING PARTITION
- EXISTING MASONRY WALL TO REMAIN
- REMOVE EXISTING MASONRY WALL
- REMOVE ENTIRE EXISTING ROOF ASSEMBLY. SEE STRUCTURAL FOR EXTENT OF ROOF DECK REMOVALS

NV/design.architecture
 6 Maiden Lane Suite 400
 New York 10038
 phone 212.964.6070 fax 212.964.6072
 www.nvda.com © 2015 NV | da, llc

NOTICE: It is a violation of New York State law to alter plans, specifications or reports to which the seal of an architect has been applied. It is a violation of the law for any person, unless acting under the direction of a licensed architect, to alter an item in any way. If the item bearing the seal of an architect is altered, the altering architect shall affix to his item his seal and the notation "altered by" followed by his signature and the date of such alteration, and a specific description of that alteration.

21.5 King Street
 New York, New York 10014

DEMOLITION PLANS:
 CELLAR, 1ST, 2ND & 3RD FL

REV#	ISSUE	DATE

LPC09.00

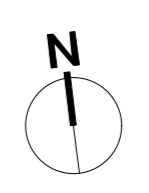
NYC LPC SUBMISSION: 07. 10. 2015

NYC DOB NUMBER

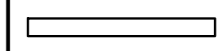
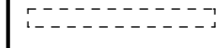


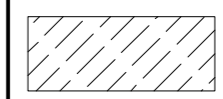
21.5K

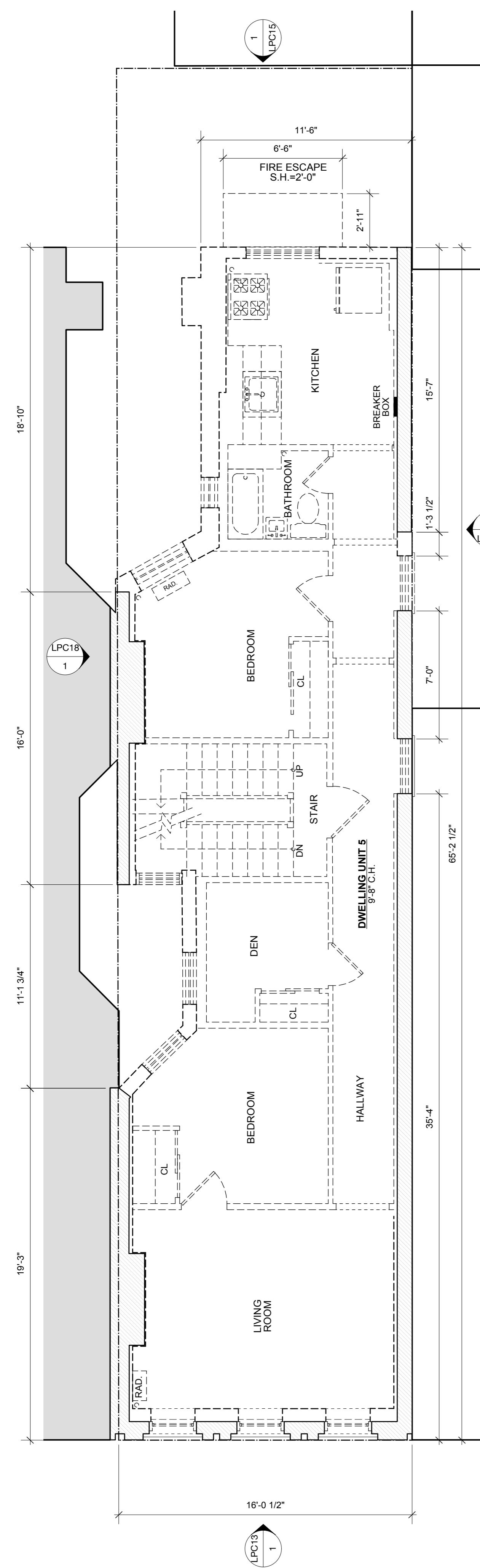
Scale:

09 OF 34

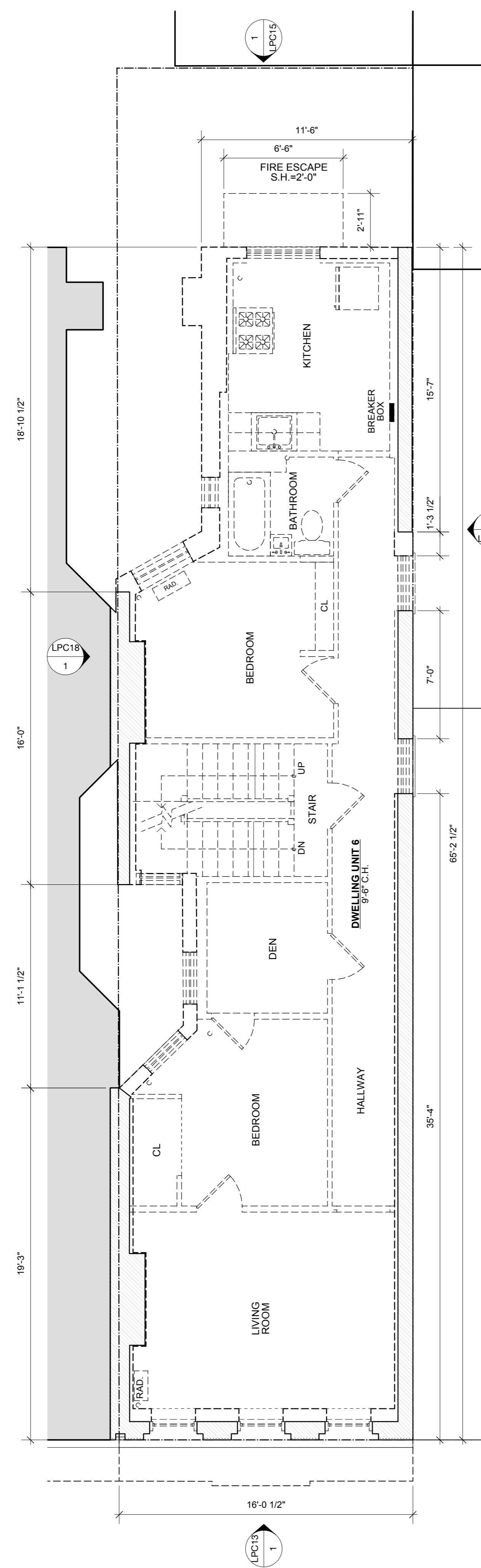


LEGEND & GENERAL NOTES

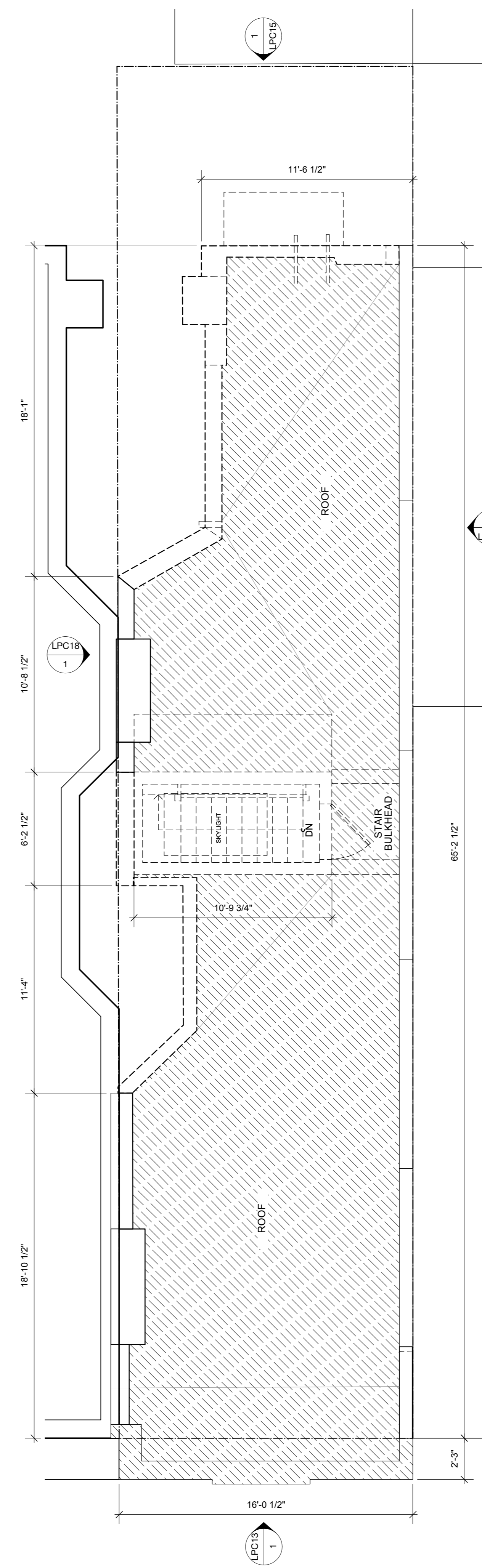
-  EXISTING PARTITION TO REMAIN
-  REMOVE EXISTING PARTITION
-  EXISTING MASONRY WALL TO REMAIN
-  REMOVE EXISTING MASONRY WALL
-  REMOVE ENTIRE EXISTING ROOF ASSEMBLY. SEE STRUCTURAL FOR EXTENT OF ROOF DECK REMOVALS



1 FOURTH FLOOR PLAN - DEMO
1/4" = 1'-0"



2 FIFTH FLOOR PLAN - DEMO
1/4" = 1'-0"



3 ROOF PLAN - DEMO
1/4" = 1'-0"

NV/design.architecture
 6 Maiden Lane Suite 400
 New York 10038
 phone 212.964.6070 fax 212.964.6072
 www.nvda.com © 2015 NV | da, llc

NOTICE: It is a violation of New York State law to alter plans, specifications or reports to which the seal of an architect has been applied. It is a violation of the law for any person, unless acting under the direction of a licensed architect, to alter an item in any way. If the item bearing the seal of an architect is altered, the altering architect shall affix to his item his seal and the notation "altered by" followed by his signature and the date of such alteration, and a specific description of that alteration.

21.5 King Street
 New York, New York 10014

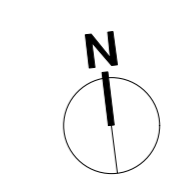
DEMOLITION PLANS:
 4TH & 5TH FL, & ROOF

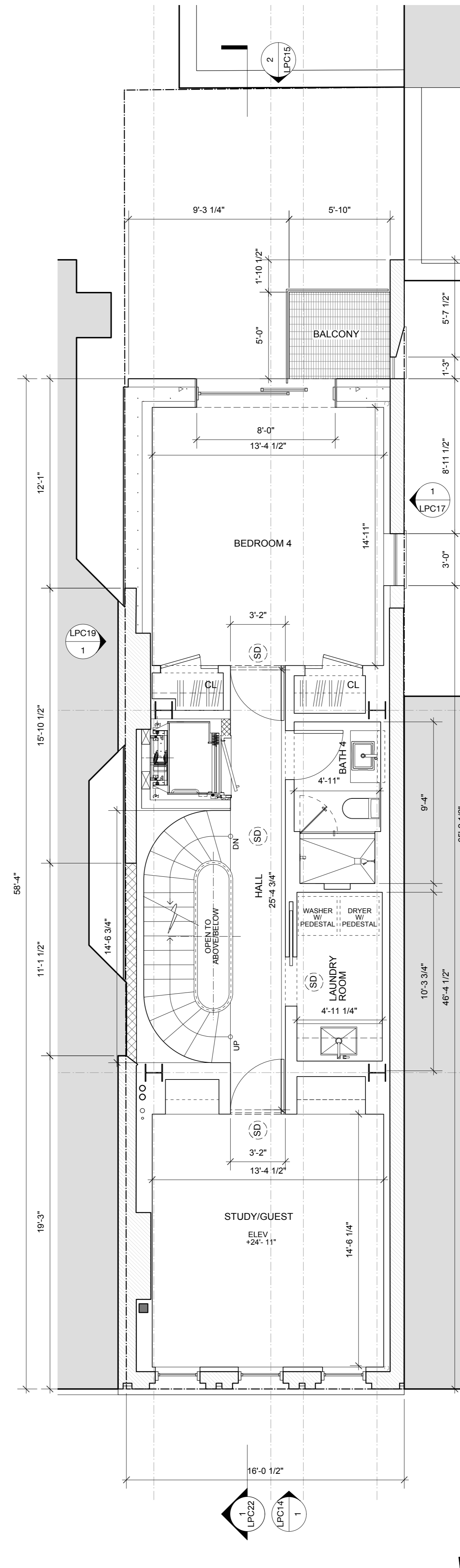
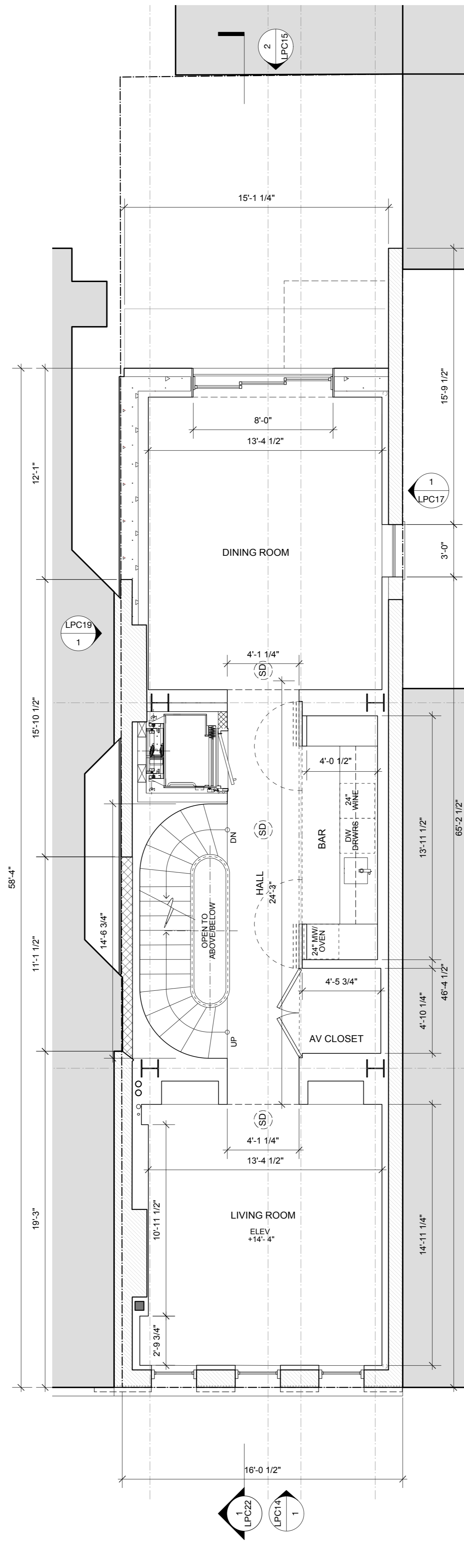
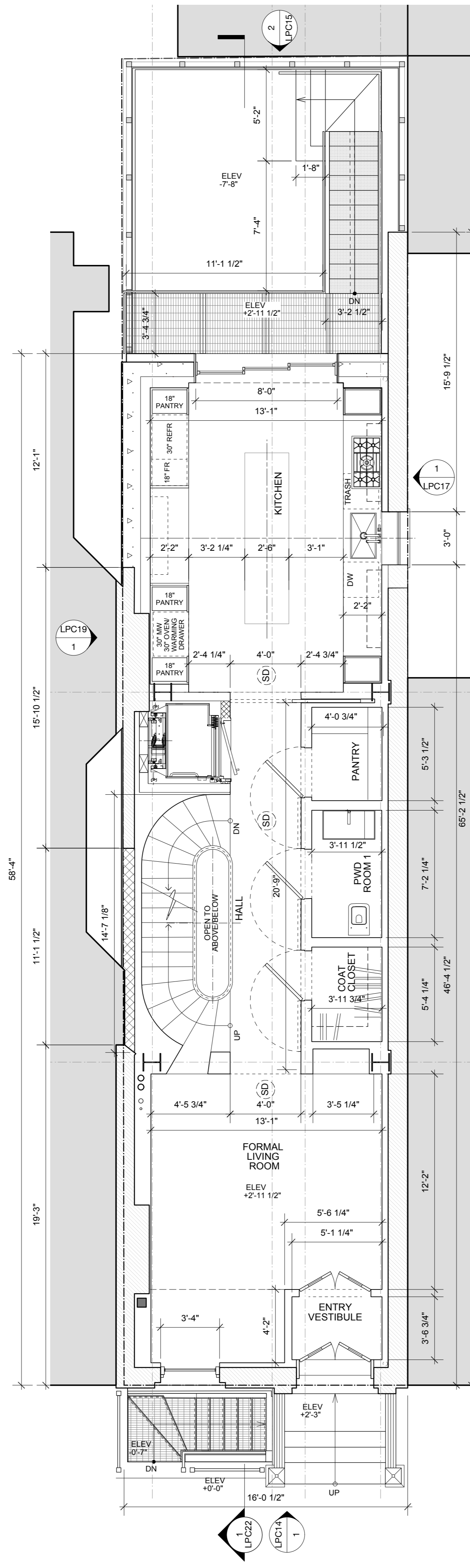
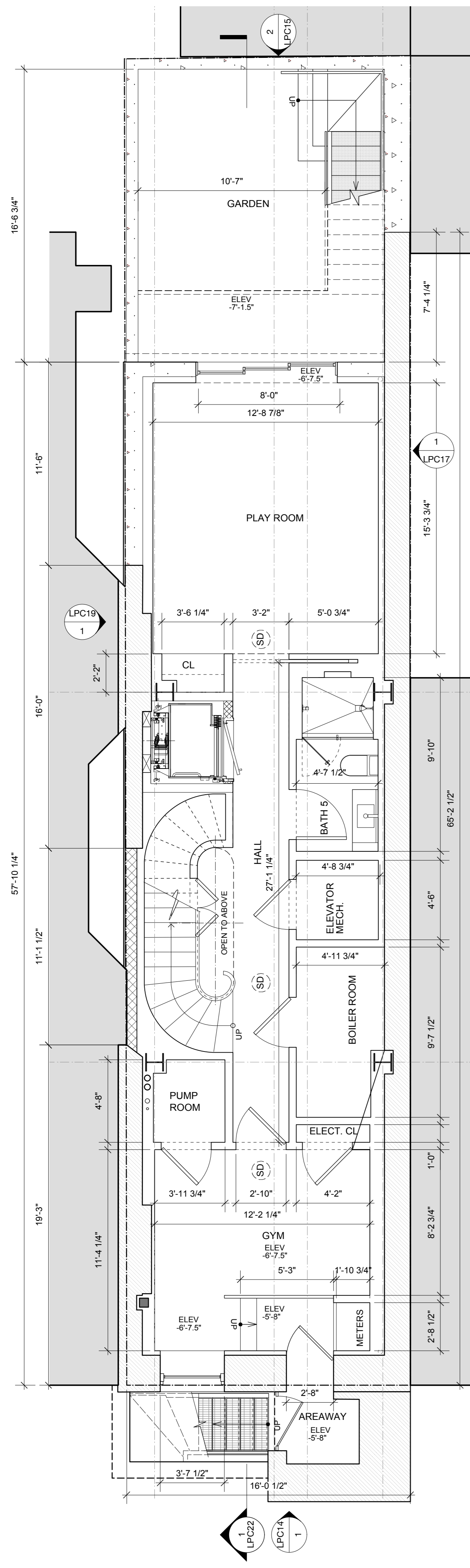
REV#	ISSUE	DATE

LPC10.00

NYC LPC SUBMISSION: 07. 10. 2015

NYC DOB NUMBER	21.5K
	Scale:
	10 OF 34





LEGEND & GENERAL NOTES

- EXISTING PARTITION TO REMAIN.
- NEW GWB PARTITION. SEE PARTITION DETAILS FOR RATING & ASSEMBLY. SEE FINISH SCHEDULE
- PROVIDE PRE-CAST CONCRETE PEDESTAL PAVERS OVER NEW INSULATED ROOF ASSEMBLY WITH FLEXIBLE MEMBRANE FLASHING AT ENTIRE PERIMETER & MEP PENETRATIONS.

NV/design.architecture
 6 Maiden Lane Suite 400
 New York 10038
 phone 212.964.6070 fax 212.964.6072
 www.nvda.com © 2015 NV | da, llc

NOTICE: It is a violation of New York State law to alter plans, specifications or reports to which the seal of an architect has been applied. It is a violation of the law for any person, unless acting under the direction of a licensed architect, to alter an item in any way. If the item bearing the seal of an architect is altered, the altering architect shall affix to his item his seal and the notation "altered by" followed by his signature and the date of such alteration, and a specific description of that alteration.

21.5 King Street
 New York, New York 10014

CONSTRUCTION PLANS:
 CELLAR, 1ST, 2ND & 3RD FL

REV#	ISSUE	DATE

LPC11.00

NYC LPC SUBMISSION: 07. 10. 2015

NYC DOB NUMBER	21.5K
Scale:	11 OF 34

