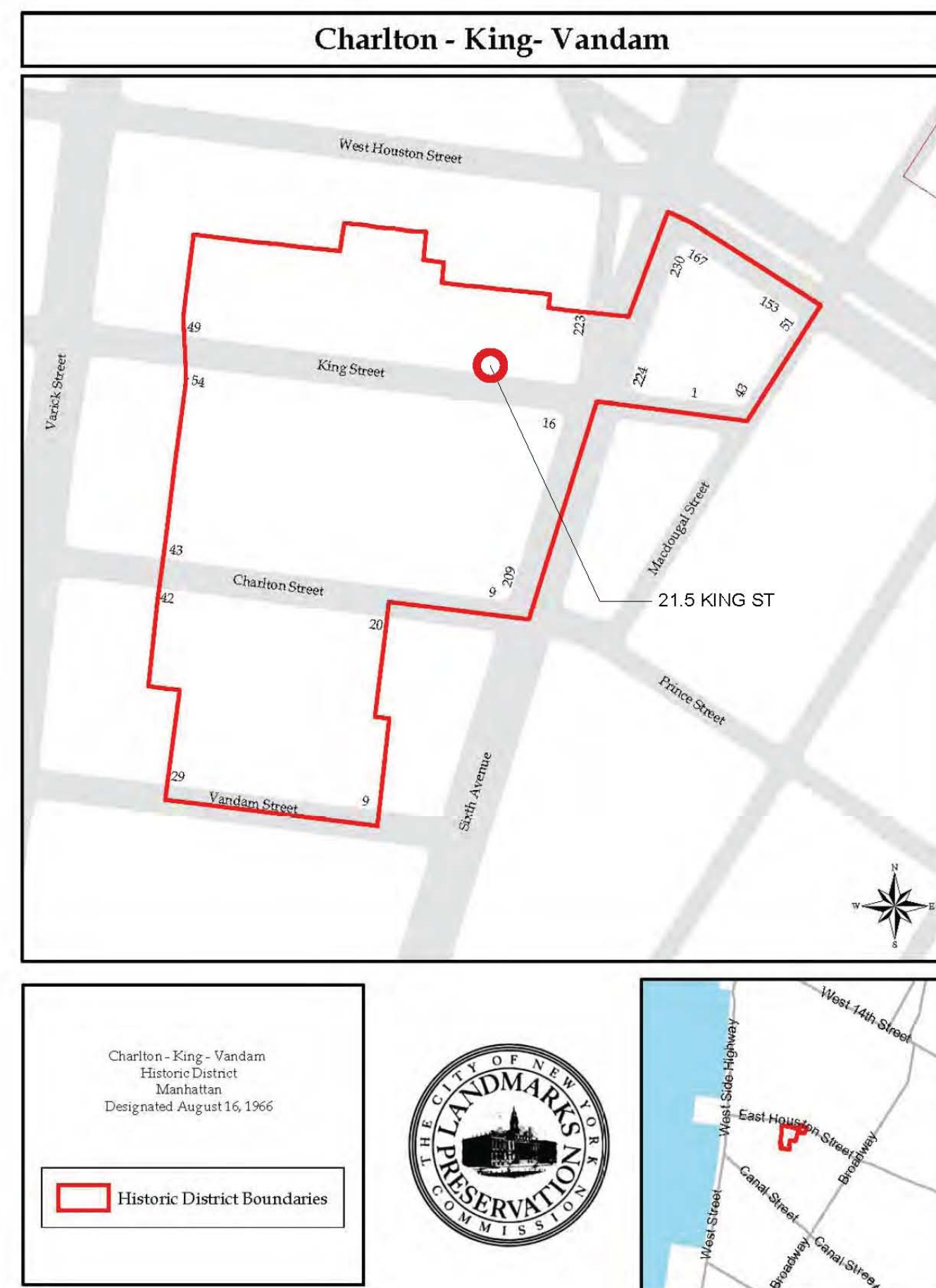


21.5 KING STREET

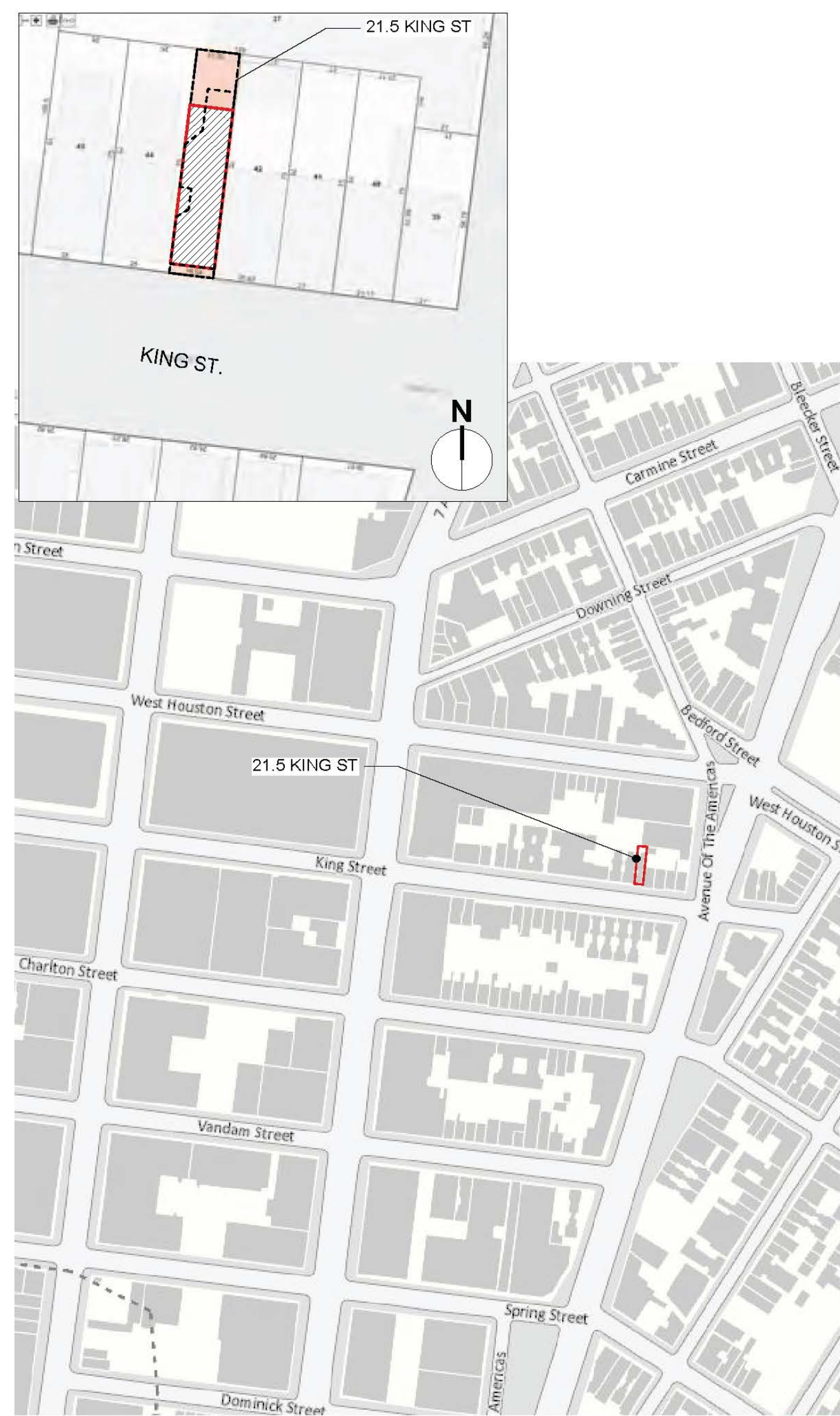
NEW YORK, NY 10014

JULY 11, 2015

LPC # 16-9436



2 CHARLTON-KING-VANDAM HISTORIC DISTRICT MAP

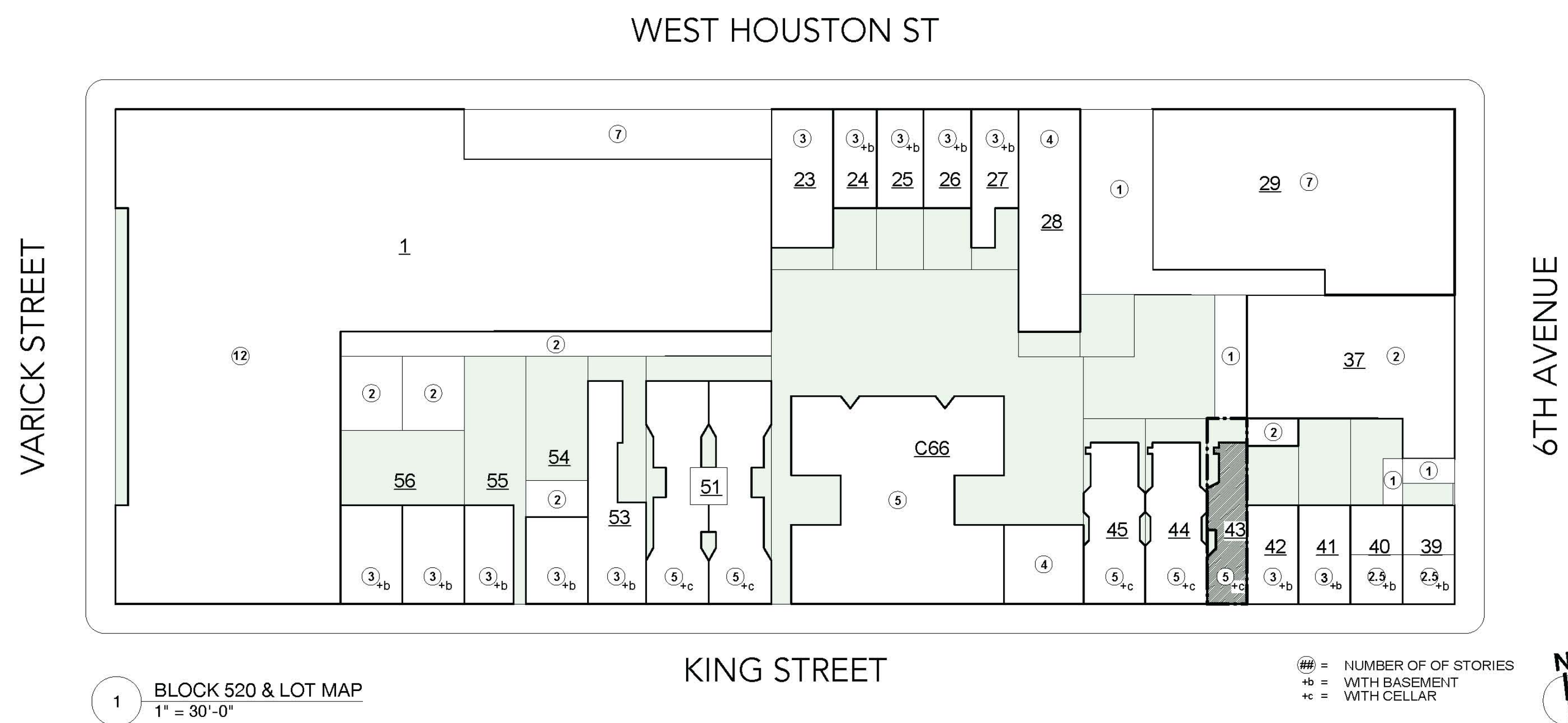


3 SITE LOCATION MAP



1940 TAX PHOTO:
 21.5 KING ST, NEW YORK, NY
 SOURCE:
 NEW YORK CITY DEPT. OF RECORDS
 MUNICIPAL ARCHIVES
 31 CHAMBERS STREET, RM 103
 NEW YORK, NY 10007

YEAR BUILT: 1900 (ESTIMATED)



1 BLOCK 520 & LOT MAP
 1" = 30'-0"

NV/design.architecture
 6 Maiden Lane Suite 400
 New York 10038
 phone 212.964.6070 fax 212.964.6072
 www.nvda.com © 2015 NV | da, llc

NOTICE: It is a violation of New York State law to alter plans, specifications or reports to which the seal of an architect has been applied. It is a violation of the law for any person, unless acting under the direction of a licensed architect, to alter an item in any way. If the item bearing the seal of an architect is altered, the altering architect shall affix to his item his seal and the notation "altered by" followed by his signature and the date of such alteration, and a specific description of that alteration.

21.5 King Street
 New York, New York 10014

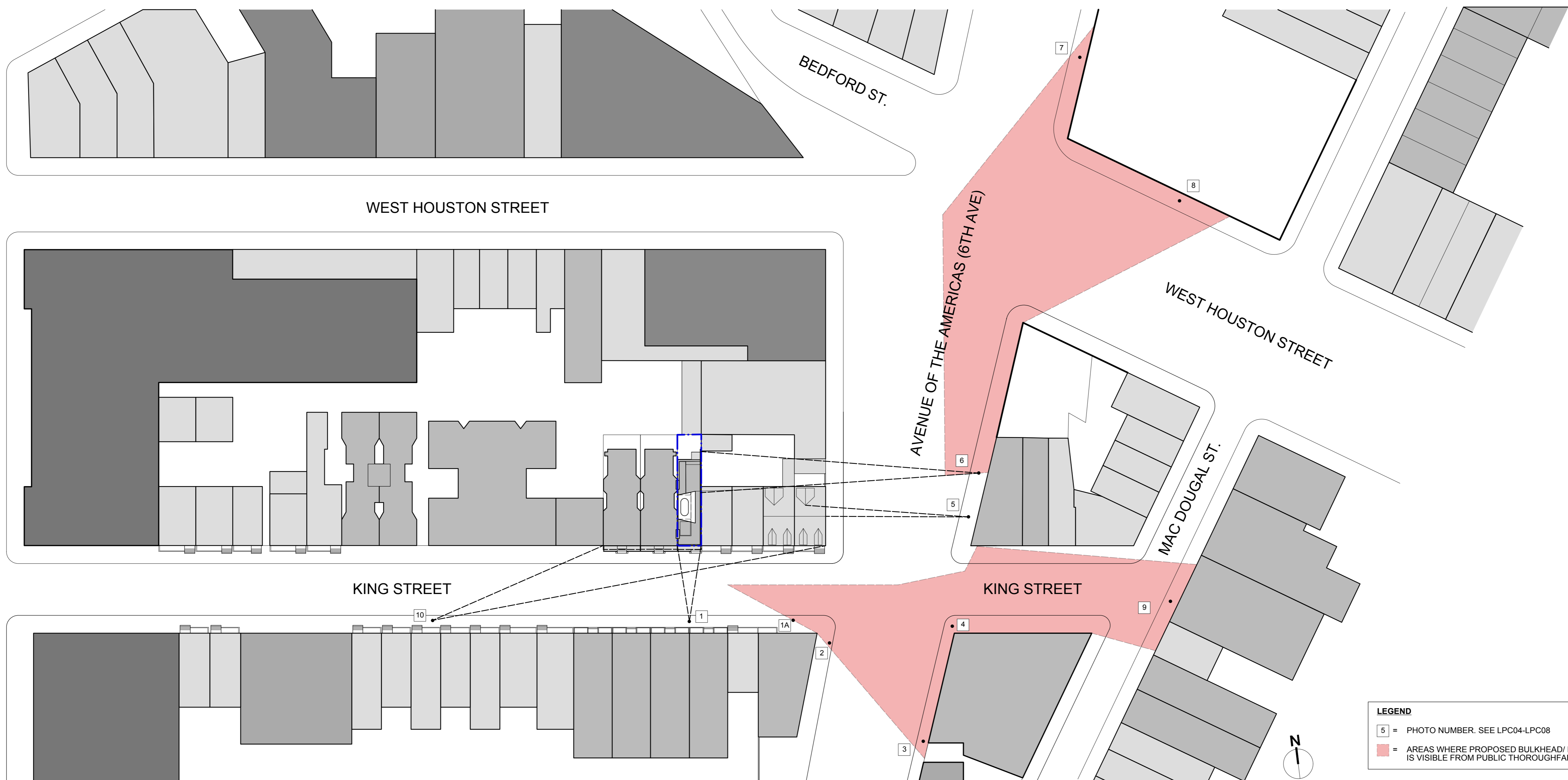
LOCATION, BLOCK
 MAPS & TAX PHOTO

REV#	ISSUE	DATE

LPC01.00

NYC LPC SUBMISSION: 07.10.2015

NYC DOB NUMBER	21.5K
Scale:	01 OF 34



1 SIGHTLINE & PHOTO KEY MAP
1" = 40'-0"

LEGEND
 5 = PHOTO NUMBER. SEE LPC04-LPC08
 = AREAS WHERE PROPOSED BULKHEAD/MOCKUP IS VISIBLE FROM PUBLIC THOROUGHFARE

NV/design.architecture
 6 Maiden Lane Suite 400
 New York 10038
 phone 212.964.6070 fax 212.964.6072
 www.nvda.com © 2015 NV | da, llc

NOTICE: It is a violation of New York State law to alter plans, specifications or reports to which the seal of an architect has been applied. It is a violation of the law for any person, unless acting under the direction of a licensed architect, to alter an item in any way. If the item bearing the seal of an architect is altered, the altering architect shall affix to his item his seal and the notation "altered by" followed by his signature and the date of such alteration, and a specific description of that alteration.

21.5 King Street
 New York, New York 10014

KING ST: EXISTING & PROPOSED STREETVIEWS

	REV#	ISSUE	DATE

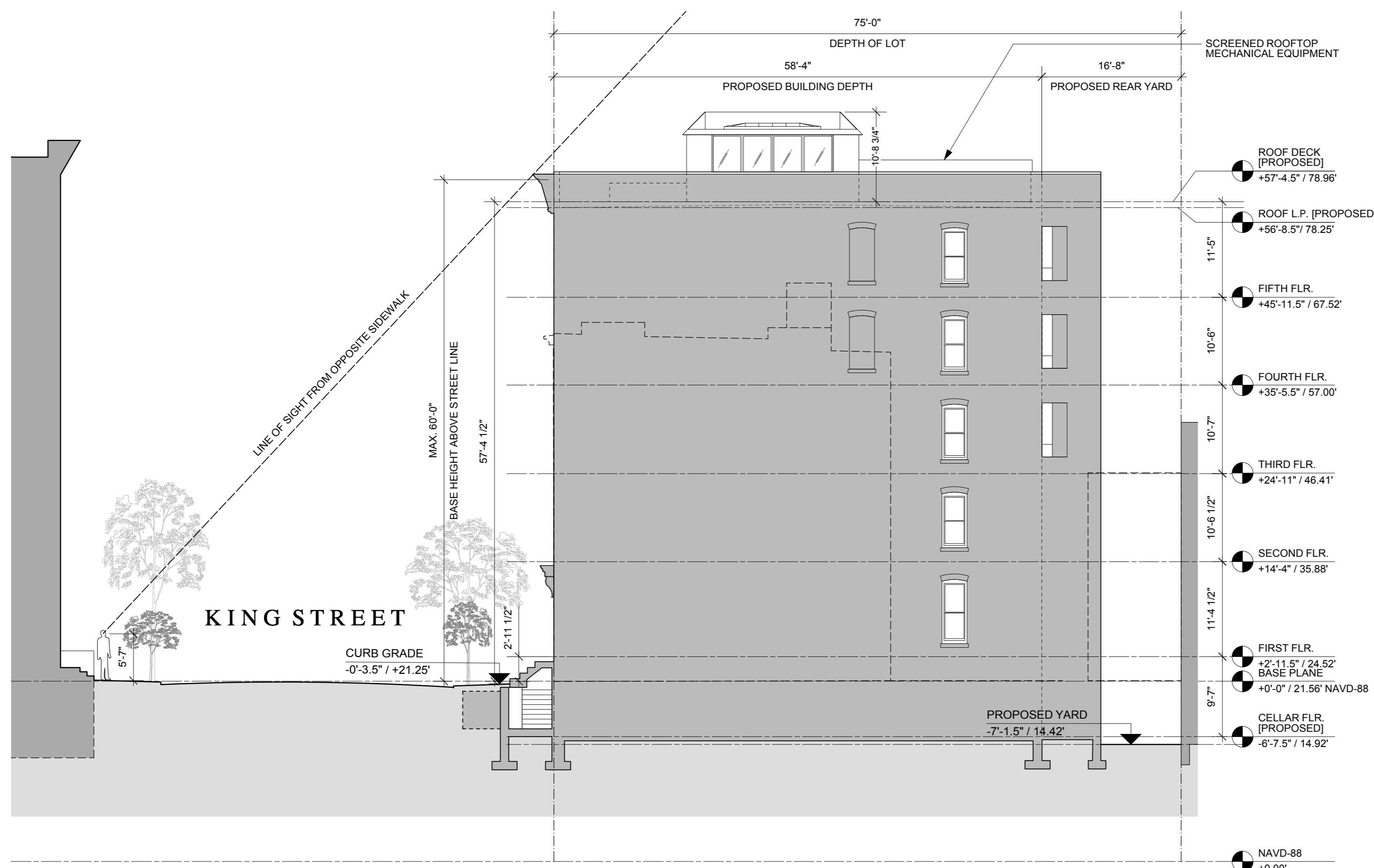
LPC02.00

NYC LPC SUBMISSION: 07. 10. 2015

NYC DOB NUMBER	21.5K
Scale:	
02 OF 34	



1 PROPOSED ZONING HEIGHT, SETBACK & HISTORIC STREETVIEW DIAGRAM
1"=10'-0"



2 PROPOSED ZONING HEIGHT, SETBACK & HISTORIC STREETVIEW DIAGRAM
1"=10'-0"

NV/design.architecture
6 Maiden Lane Suite 400
New York 10038
phone 212.964.6070 fax 212.964.6072
www.nvda.com © 2015 NV | da, llc

NOTICE: It is a violation of New York State law to alter plans, specifications or reports to which the seal of an architect has been applied. It is a violation of the law for any person, unless acting under the direction of a licensed architect, to alter an item in any way. If the item bearing the seal of an architect is altered, the altering architect shall affix to his item his seal and the notation "altered by" followed by his signature and the date of such alteration, and a specific description of that alteration.

21.5 King Street
New York, New York 10014

STREET SIGHTLINES
DIAGRAMS:
6TH AVE & KING ST.

	REV#	ISSUE	DATE

LPC03.00

NYC LPC SUBMISSION: 07. 10. 2015

NYC DOB NUMBER	21.5K
Scale:	03 OF 34



1 - MOCKUP VIEW FROM SOUTH FACADE ALONG KING STREET.



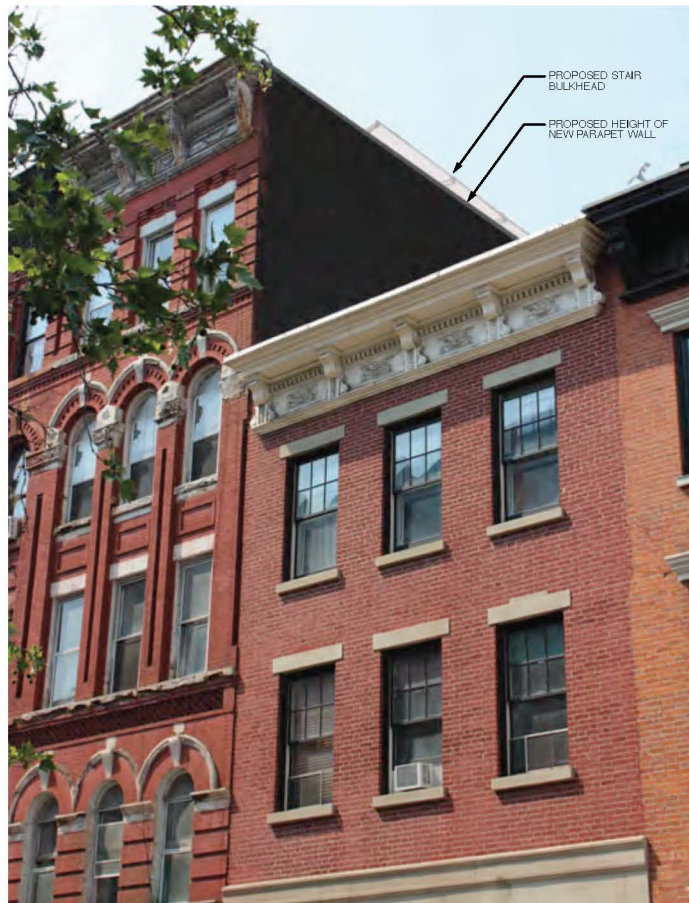
1 - RENDERING VIEW FROM SOUTH FACADE ALONG KING STREET.



2 - MOCKUP VIEW FROM SOUTHWESTERN CORNER OF KING ST & 6TH AVENUE



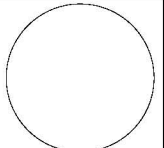
1A - MOCKUP VIEW FROM SOUTH FACADE & EAST LOT LINE WALL ALONG KING STREET.



1A - RENDERING VIEW FROM SOUTH FACADE & EAST LOT LINE WALL ALONG KING STREET.



2 - RENDERING VIEW FROM SOUTHWESTERN CORNER OF KING ST & 6TH AVENUE

NV/design.architecture 6 Maiden Lane Suite 400 New York 10039 phone 212.964.6878 fax 212.964.6872 www.nvda.com © 2015 NV I da, llc		
<small>NOTICE: It is a violation of New York State law to alter plans, specifications or reports to which the seal of an architect has been applied. It is a violation of the law for any person, unless acting under the direction of a licensed architect, to alter in any way, if the item bearing the seal of an architect is altered, the altering architect shall affix to his own his seal and the notation "altered by" followed by his signature and the date of such alteration, and a specific description of that alteration.</small>		
21.5 King Street New York, New York 10014		
BULKHEAD MOCKUP: IMAGES & RENDERINGS		
	<small>REV#</small> <small>ISSUE</small> <small>DATE</small>	
LPC04.00		
<small>NYC LPC SUBMISSION: 07.10.2015</small>		
<small>NYC DOB NUMBER</small>		21.5K
		<small>Scale: AS NOTED</small>
		<small>04 OF 34</small>



3 - MOCKUP VIEW FROM SOUTHEASTERN CORNER OF KING STREET & 6TH AVENUE



3 - RENDERING VIEW FROM SOUTHEASTERN CORNER OF KING STREET & 6TH AVENUE



4 - MOCKUP VIEW FROM EASTERN SIDEWALK OF 6TH AVENUE, SOUTH OF INTERSECTION WITH KING STREET



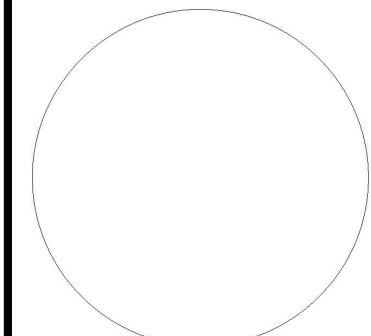
4 - RENDERING VIEW FROM EASTERN SIDEWALK OF 6TH AVENUE, SOUTH OF INTERSECTION WITH KING STREET

NV/design.architecture
 6 Maiden Lane Suite 400
 New York 10038
 phone 212.964.6070 fax 212.964.6072
 www.nvda.com © 2015 NV | da, llc

NOTICE: It is a violation of New York State law to alter plans, specifications or reports to which the seal of an architect has been applied. It is a violation of the law for any person, unless acting under the direction of a licensed architect, to alter an item in any way. If the item bearing the seal of an architect is altered, the altering architect shall affix to his item his seal and the notation "altered by" followed by his signature and the date of such alteration, and a specific description of that alteration.

21.5 King Street
 New York, New York 10014

**BULKHEAD MOCKUP:
 IMAGES & RENDERINGS**

	REV#	ISSUE	DATE

LPC05.00

NYC LPC SUBMISSION: 07. 10. 2015

NYC DOB NUMBER

21.5K

Scale: AS NOTED

05 OF 34