

FIRE DEPARTMENT OF THE CITY OF NEW YORK



**PRESENTATION TO MANHATTAN COMMUNITY BOARD 12:
STATUS OF EMS STATION 13 – 501 WEST 172ND STREET**

FEBRUARY 25, 2014



BACKGROUND:

- The City's Emergency Medical Services (EMS) function was merged into the Fire Department in 1996.
- At merger the Police Department had 76 police precincts and the Fire Department had 225 firehouses. However EMS only had **16** ambulance stations Citywide.
- These facilities were overcrowded and ambulance units, which are “dynamically deployed” to strategic street corners (know as “atoms”), in some cases were required to travel several miles to reach their dispatching atom.
- Because of this issue a primary goal of the merger was to build more ambulance stations Citywide and since 1996 the Fire Department has opened **22** new EMS stations across the City with two others presently in development.



BACKGROUND:

- Achieving this goal has also placed ambulance units closer to their dispatching atoms.
- This has reduced the amount of time an ambulance unit was out-of-service moving between their station & their dispatching atom (for tour change, re-stocking, decontamination, or for administrative issues).
- Prior to establishing EMS Station 13 at 501 West 172nd Street & Amsterdam Avenue in 2013 – all municipal ambulance units serving Manhattan Community Board 12 were based at EMS Station 16 which is located on the grounds of Harlem Hospital at West 136th Street & Lenox Avenue in Community Board 10.
- Presently the unit locations of the six ambulances based in Manhattan Community Board 12 are as follows:



UNIT DEPLOYMENT:

#	Unit	Type*	Cross Street Location (Atom)	# of Tours Per Day
1	13W	ALS	West 155 th Street & Amsterdam Avenue	3
2	13B	BLS	West 158 th Street & Broadway	3
3	13C	BLS	West 165 th Street & Broadway	3
4	13D	BLS	West 175 th Street & Saint Nicholas Avenue	3
5	13E	BLS	West 190 th Street & Broadway	3
6	16E	BLS	West 145 th Street & Broadway	3
7	C13	N/A	Command Vehicle**	3
Total Tours Per Day				21

* ALS: Advanced Life Support unit (staffed by Paramedics)

* BLS: Basic Life Support unit (staffed by Emergency Medical Technicians)

** A command vehicle is staffed by an EMS officer who is responsible to manage field conditions, assist units with difficult operations, respond to where people refuse medical assistance, etc.



TRAVEL DISTANCE SAVINGS:

<i>Unit</i>	<i>Cross Street Location</i>	<i>Distance to Station 16*</i>	<i>Distance to Station 13*</i>	<i>Diff.</i>
13W	West 155 th Street & Amsterdam Avenue	1.6	0.9	<i>-0.7</i>
13B	West 158 th Street & Broadway	1.9	0.8	<i>-1.1</i>
13C	West 165 th Street & Broadway	2.1	0.5	<i>-1.6</i>
13D	West 175 th Street & Saint Nicholas Avenue	2.5	0.3	<i>-2.2</i>
13E	West 190 th Street & Broadway	3.3	1.2	<i>-2.1</i>
16E	West 145 th Street & Broadway	1.3	1.5	<i>0.2</i>
C13	Command Vehicle	N/A	N/A	N/A
<i>Travel Distances Saved</i>		<i>12.7</i>	<i>5.2</i>	<i>7.5</i>

* Distance measured in miles.



RESULTS:

- Since EMS Station 13 opened at 501 West 172nd Street and Amsterdam Avenue in late 2012; EMS average response times have been magnificent!
- Comparing 2012 to 2013 (Citywide and Manhattan) EMS average response times increased overall – from 6:30 to 6:47 (Citywide) and 6:17 to 6:28 (Manhattan).
- Meanwhile in 2012 this community board had EMS average response times slightly lower than the borough average (6:14).
- However last year, after EMS Station 13 was put into operation and the Citywide and Manhattan EMS averaged response times increased, this community board had a dramatic **18** second reduction in its average EMS response times from the prior year.

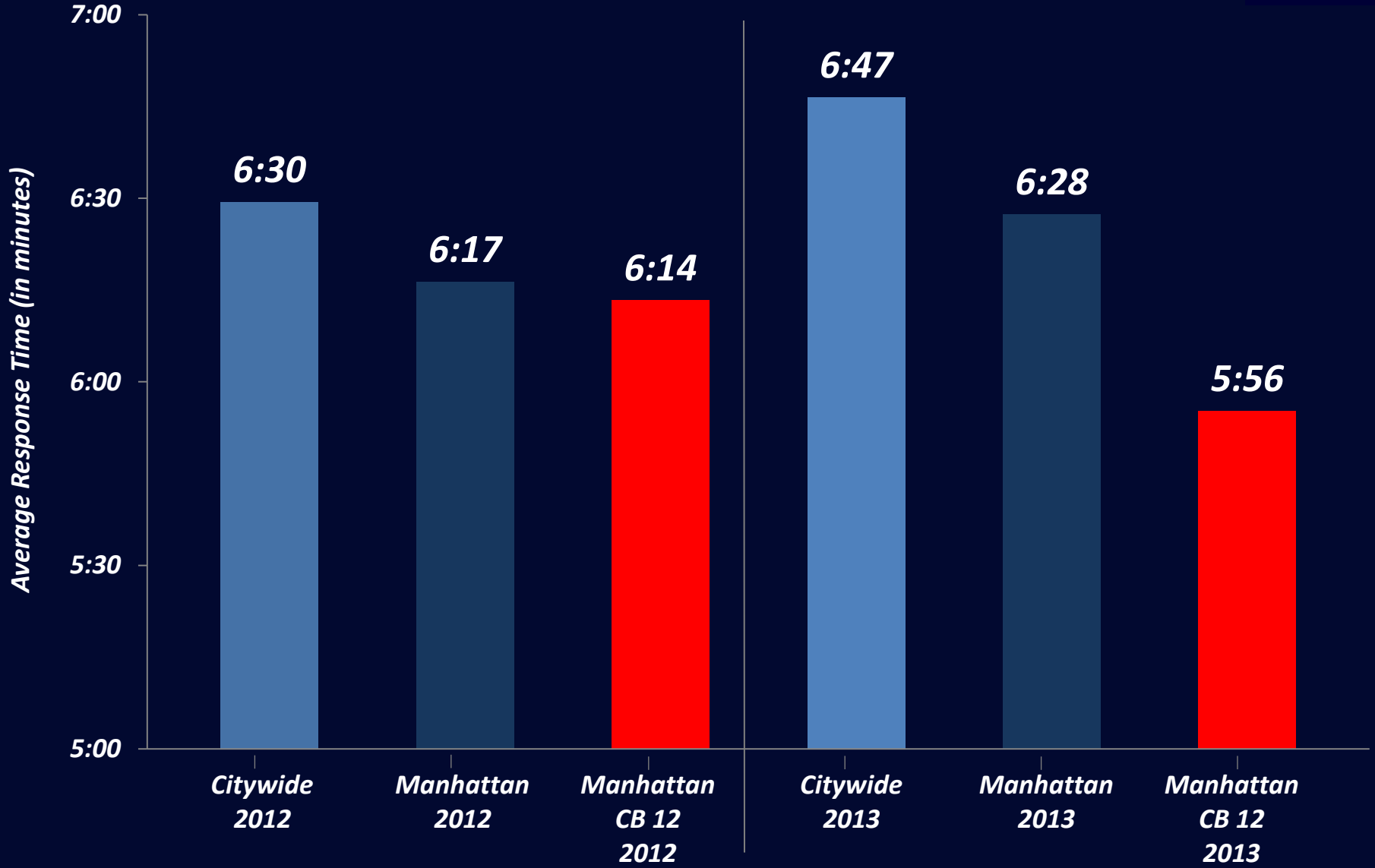


FIRE DEPARTMENT OF THE CITY OF NEW YORK

AVERAGE EMERGENCY MEDICAL RESPONSE TIMES

2012 – 2013

(CITYWIDE, MANHATTAN, MANHATTAN COMMUNITY BOARD 12)





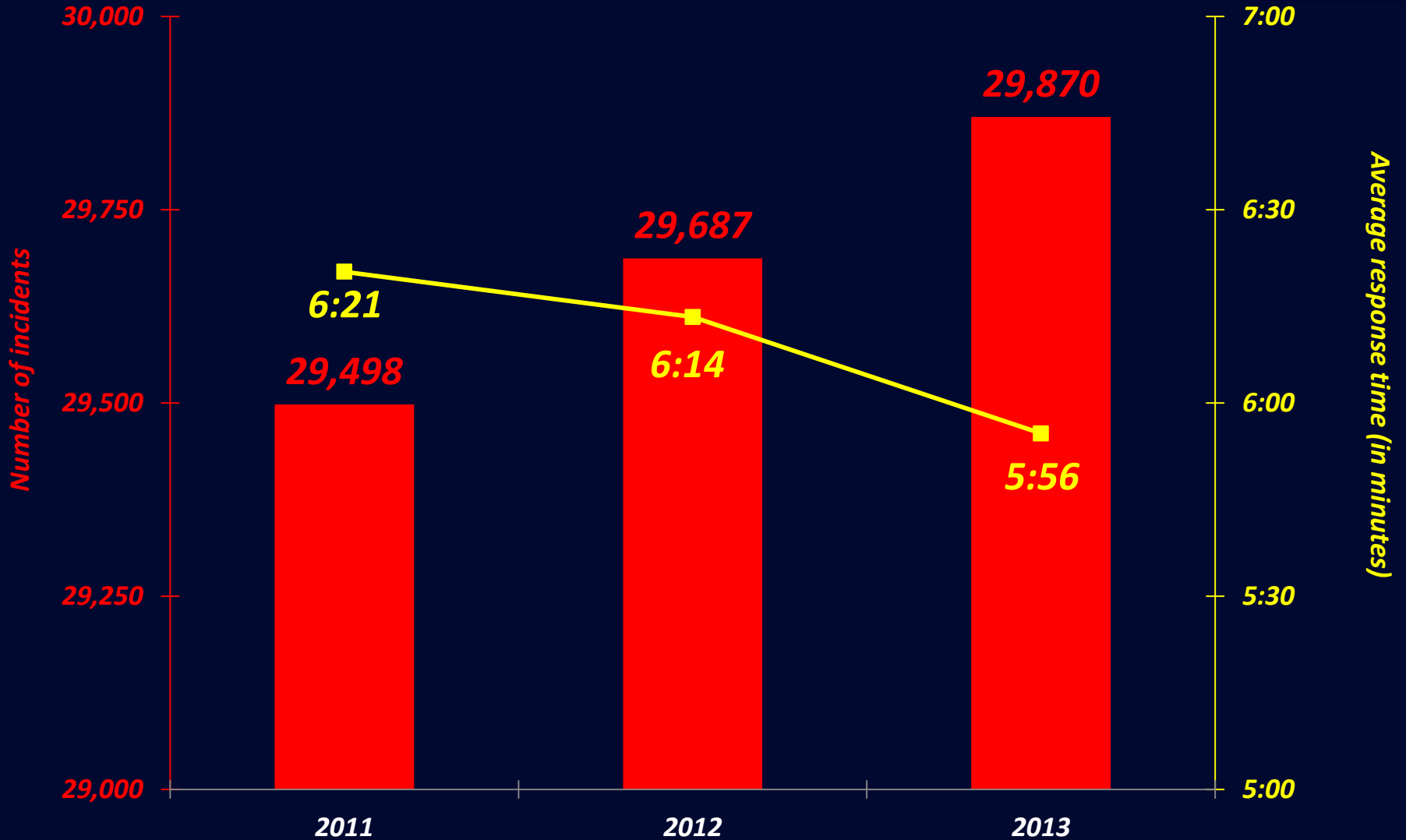
RESULTS:

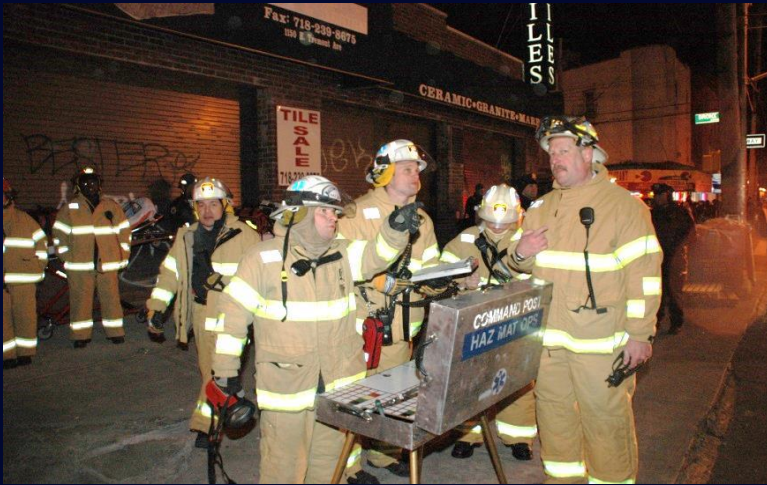
- Even more exciting is when we compare this tremendous response time reduction to the EMS call volume in this community board.
- EMS call volume increases, on average Citywide, approximately three to four percent annually.
- In 2013 EMS responded to almost 1.3 million times. In Manhattan Community Board 12 EMS responded almost 30,000 times (and this volume continues a three year trend of increased demand for service).
- This increased level of responses, coupled with the continued drop in average EMS response times, clearly shows EMS Station 13 has become, and will continue to be, a tremendous asset for this community.



FIRE DEPARTMENT OF THE CITY OF NEW YORK

AVERAGE EMERGENCY MEDICAL RESPONSE TIMES AND TOTAL INCIDENTS FOR 2011 – 2013: MANHATTAN COMMUNITY BOARD 12





Fire Department of the City of New York:

*Commitment, Courage, and
Compassion*

Questions

