

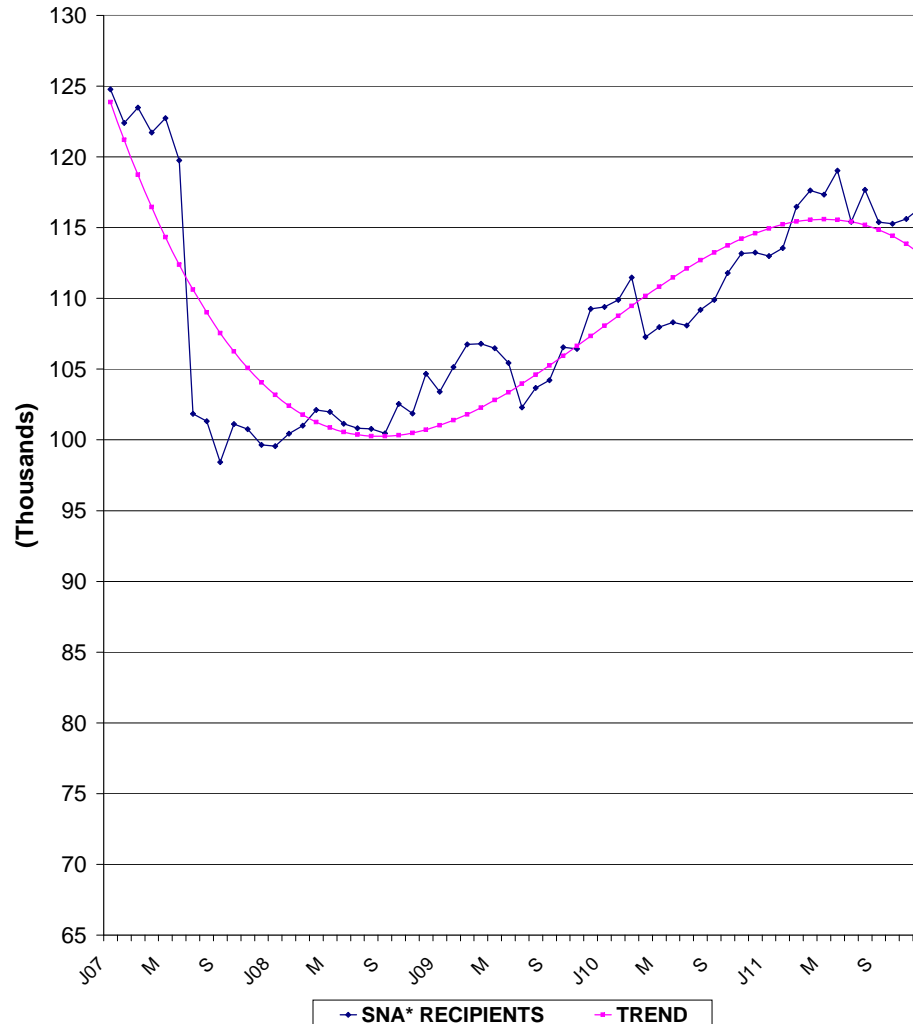


HUMAN RESOURCES ADMINISTRATION

SNA* RECIPIENTS: TREND, % CHANGE FROM PREVIOUS MONTH; % CHANGE FROM PREVIOUS YEAR

TOTAL SNA* RECIPIENTS		PERCENT MONTHLY	CHANGE YEARLY
07	1	0.0%	9.6%
	2	-1.9%	8.6%
	3	0.9%	9.1%
	4	-1.4%	6.5%
	5	0.8%	6.8%
	6	-2.4%	4.2%
	7	-15.0%	-10.2%
	8	-0.5%	-11.8%
	9	-2.9%	-12.8%
	10	2.7%	-19.8%
	11	-0.3%	-18.7%
	12	-1.1%	-20.2%
08	1	-0.1%	-20.2%
	2	0.9%	-17.9%
	3	0.6%	-18.2%
	4	1.1%	-16.1%
	5	-0.1%	-16.9%
	6	-0.8%	-15.5%
	7	-0.3%	-1.0%
	8	0.0%	-0.5%
	9	-0.3%	2.1%
	10	2.1%	1.4%
	11	-0.7%	1.1%
	12	2.8%	5.0%
09	1	-1.2%	3.9%
	2	1.7%	4.7%
	3	1.5%	5.7%
	4	0.0%	4.6%
	5	-0.3%	4.4%
	6	-1.0%	4.2%
	7	-3.0%	1.5%
	8	1.3%	2.9%
	9	0.5%	3.7%
	10	2.2%	3.9%
	11	-0.1%	4.5%
	12	2.7%	4.4%
10	1	0.1%	5.8%
	2	0.4%	4.5%
	3	1.5%	4.4%
	4	-3.8%	0.5%
	5	0.7%	1.4%
	6	0.3%	2.7%
	7	-0.2%	5.6%
	8	1.0%	5.3%
	9	0.7%	5.5%
	10	1.7%	4.9%
	11	1.2%	6.3%
	12	0.1%	3.6%
11	1	-0.2%	3.3%
	2	0.5%	3.3%
	3	2.6%	4.5%
	4	1.0%	9.6%
	5	-0.2%	8.7%
	6	1.4%	9.9%
	7	-3.0%	6.8%
	8	2.0%	7.8%
	9	-1.9%	5.0%
	10	-0.1%	3.1%
	11	0.3%	2.2%
	12	0.7%	2.8%

**TREND IN SNA* RECIPIENTS
2007-2011**



* SNA = Safety Net Assistance (formerly HR)

**

As of October 2006 Two Parent category as been reallocated to Safety Net Non-MOE. July 2007 reflects transferred cases mostly from SNA to 60 Month converted due to State Audit reconciliation.

© Copyright 2011 The City of New York, Department of Social Services

For permission to reproduce all or part
Of this material contact the New York City
Human Resources Administration