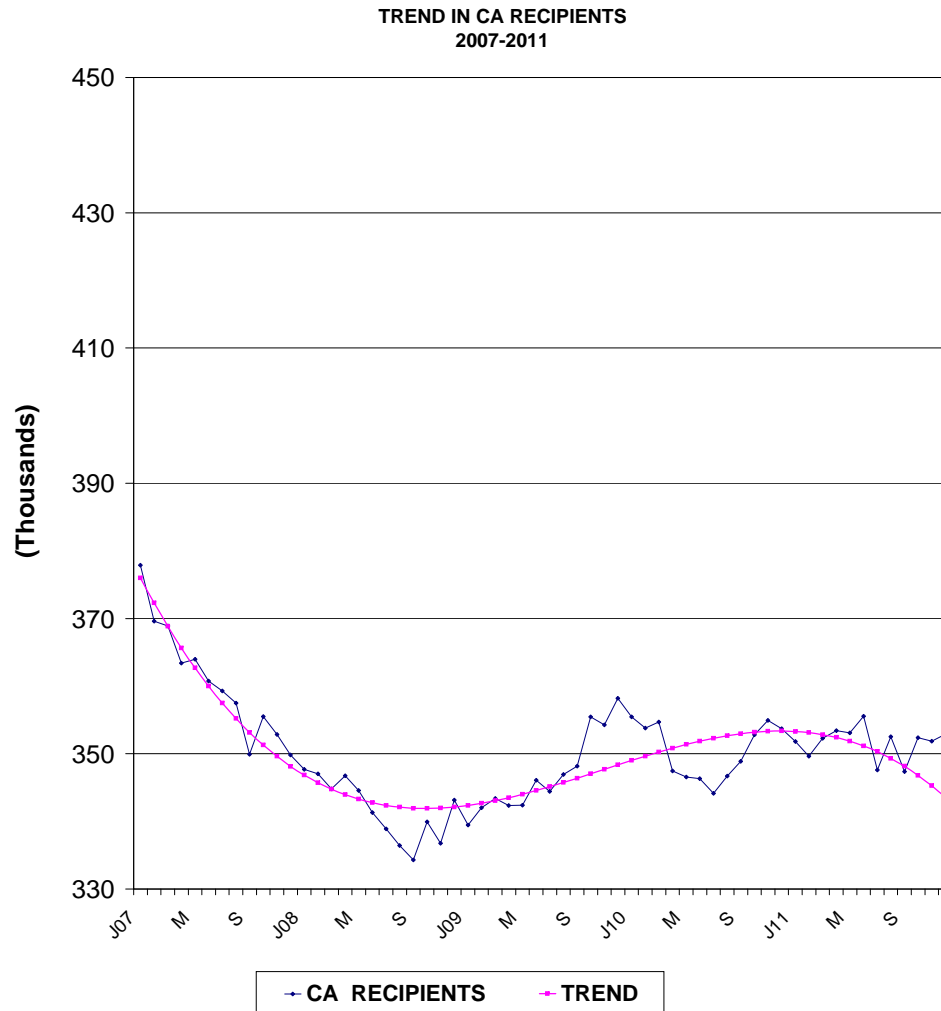




HUMAN RESOURCES ADMINISTRATION CA RECIPIENTS: TREND, % CHANGE FROM PREVIOUS MONTH; % CHANGE FROM PREVIOUS YEAR

		TOTAL CA RECIPIENTS	PERCENT MONTHLY	CHANGE YEARLY
07	1	377,896	-0.7%	-8.4%
	2	369,601	-2.2%	-8.8%
	3	368,892	-0.2%	-8.3%
	4	363,392	-1.5%	-8.6%
	5	363,972	0.2%	-8.2%
	6	360,738	-0.9%	-8.4%
	7	359,285	-0.4%	-7.6%
	8	357,473	-0.5%	-8.2%
	9	349,936	-2.1%	-8.6%
	10	355,510	1.6%	-8.1%
	11	352,846	-0.7%	-7.2%
	12	349,816	-0.9%	-8.1%
08	1	347,681	-0.6%	-8.0%
	2	347,014	-0.2%	-6.1%
	3	344,834	-0.6%	-6.5%
	4	346,740	0.6%	-4.6%
	5	344,594	-0.6%	-5.3%
	6	341,329	-0.9%	-5.4%
	7	338,886	-0.7%	-5.7%
	8	336,430	-0.7%	-5.9%
	9	334,329	-0.6%	-4.5%
	10	339,936	1.7%	-4.4%
	11	336,765	-0.9%	-4.6%
	12	343,144	1.9%	-1.9%
09	1	339,452	-1.1%	-2.4%
	2	342,010	0.8%	-1.4%
	3	343,384	0.4%	-0.4%
	4	342,333	-0.3%	-1.3%
	5	342,380	0.0%	-0.6%
	6	346,106	1.1%	1.4%
	7	344,422	-0.5%	1.6%
	8	346,935	0.7%	3.1%
	9	348,190	0.4%	4.1%
	10	355,459	2.1%	4.6%
	11	354,278	-0.3%	5.2%
	12	358,180	1.1%	4.4%
10	1	355,454	-0.8%	4.7%
	2	353,824	-0.5%	3.5%
	3	354,679	0.2%	3.3%
	4	347,465	-2.0%	1.5%
	5	346,578	-0.3%	1.2%
	6	346,321	-0.1%	0.1%
	7	344,163	-0.6%	-0.1%
	8	346,716	0.7%	-0.1%
	9	348,865	0.6%	0.2%
	10	352,793	1.1%	-0.8%
	11	354,937	0.6%	0.2%
	12	353,722	-0.3%	-1.2%
11	1	351,807	-0.5%	-1.0%
	2	349,644	-0.6%	-1.2%
	3	352,288	0.8%	-0.7%
	4	353,436	0.3%	1.7%
	5	353,111	-0.1%	1.9%
	6	355,568	0.7%	2.7%
	7	347,586	-2.2%	1.0%
	8	352,505	1.4%	1.7%
	9	347,372	-1.5%	-0.4%
	10	352,361	1.4%	-0.1%
	11	351,854	-0.1%	-0.9%
	12	352,918	0.3%	-0.2%



CA = Cash Assistance (Formerly Public Assistance)

© Copyright 2011 The City of New York, Department of Social Services
For permission to reproduce all or part
Of this material contact the New York City
Human Resources Administration