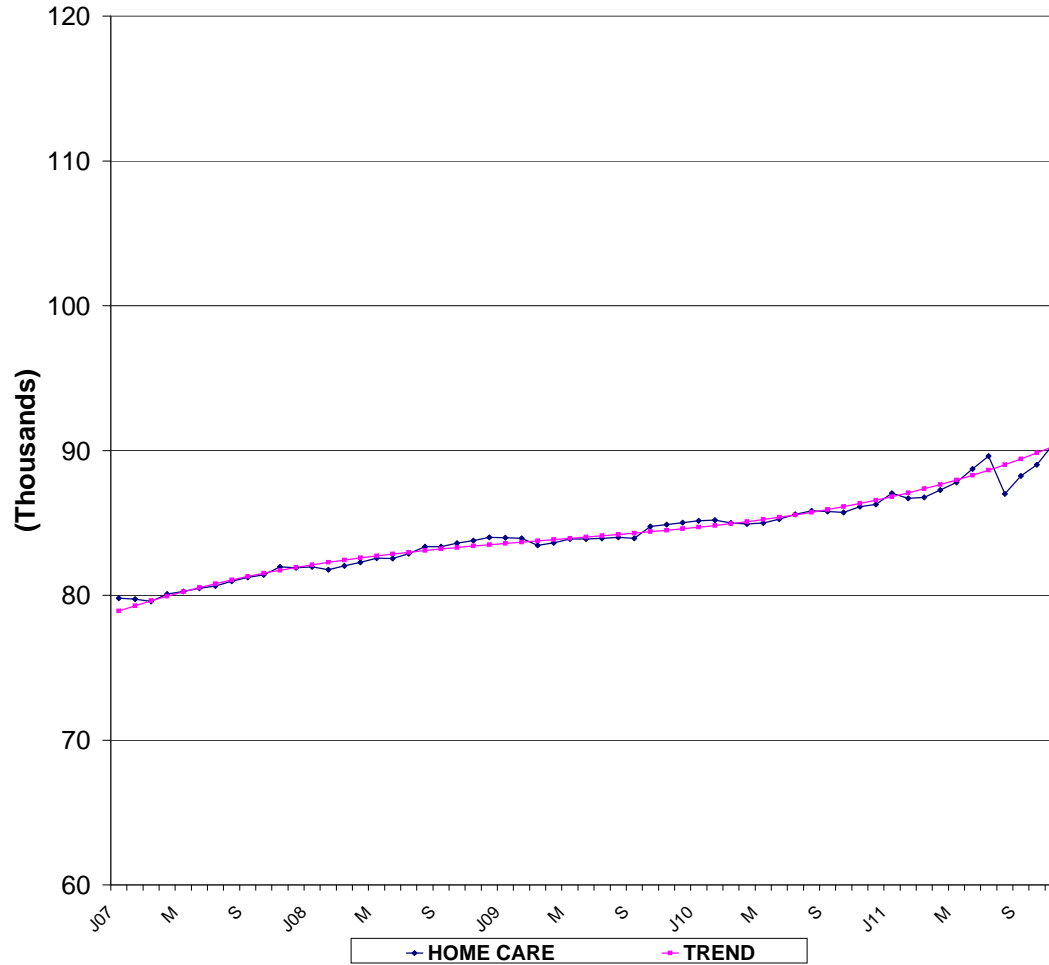




HUMAN RESOURCES ADMINISTRATION HOME CARE CASES: TREND, % CHANGE FROM PREVIOUS MONTH; % CHANGE FROM PREVIOUS YEAR

	HOME CARE CASES	PERCENT MONTHLY	CHANGE YEARLY
07	1 79,794	24.6%	21.9%
	2 79,738	-0.1%	22.4%
	3 79,584	-0.2%	22.3%
	4 80,096	0.6%	23.3%
	5 80,257	0.2%	23.6%
	6 80,476	0.3%	24.2%
	7 80,631	0.2%	24.5%
	8 80,963	0.4%	25.6%
	9 81,247	0.4%	26.6%
	10 81,414	0.2%	26.4%
	11 81,967	0.7%	27.6%
	12 81,893	-0.1%	27.8%
08	1 81,970	0.1%	2.7%
	2 81,775	-0.2%	2.6%
	3 82,043	0.3%	3.1%
	4 82,282	0.3%	2.7%
	5 82,558	0.3%	2.9%
	6 82,540	0.0%	2.6%
	7 82,877	0.4%	2.8%
	8 83,351	0.6%	2.9%
	9 83,361	0.0%	2.6%
	10 83,599	0.3%	2.7%
	11 83,774	0.2%	2.2%
	12 84,009	0.3%	2.6%
09	1 83,980	0.0%	2.5%
	2 83,935	-0.1%	2.6%
	3 83,453	-0.6%	1.7%
	4 83,614	0.2%	1.6%
	5 83,883	0.3%	1.6%
	6 83,899	0.0%	1.6%
	7 83,940	0.0%	1.3%
	8 84,000	0.1%	0.8%
	9 83,937	-0.1%	0.7%
	10 84,751	1.0%	1.4%
	11 84,891	0.2%	1.3%
	12 85,018	0.1%	1.2%
10	1 85,154	0.2%	1.4%
	2 85,196	0.0%	1.5%
	3 84,990	-0.2%	1.8%
	4 84,922	-0.1%	1.6%
	5 84,991	0.1%	1.3%
	6 85,251	0.3%	1.6%
	7 85,587	0.4%	2.0%
	8 85,837	0.3%	2.2%
	9 85,785	-0.1%	2.2%
	10 85,726	-0.1%	1.2%
	11 86,111	0.4%	1.4%
	12 86,279	0.2%	1.5%
11	1 87,044	**	0.9%
	2 86,705	**	-0.4%
	3 86,755	**	0.1%
	4 87,272	**	0.6%
	5 87,807	**	0.6%
	6 88,722	1.0%	4.1%
	7 89,610	1.0%	4.7%
	8 86,997	-2.9%	1.4%
	9 88,246	1.4%	2.9%
	10 89,024	0.9%	3.8%
	11 90,440	1.6%	5.0%

**TREND IN HOME_CARE CASES
2007-2011**



© Copyright 2011 The City of New York, Department of Social Services
For permission to reproduce all or part
Of this material contact the New York City
Human Resources Administration

*Data includes Managed Long Term Care.

** As of July 2011, Jan - May Home Care cases have been revised.