

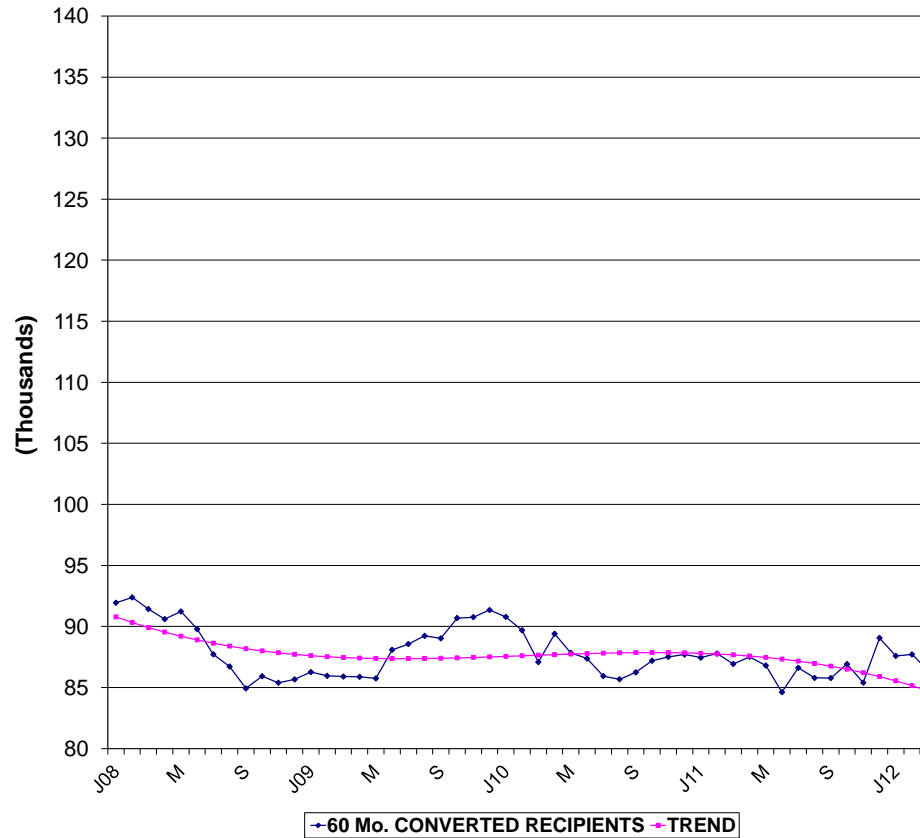


## HUMAN RESOURCES ADMINISTRATION

### 60 MONTH CONVERTED TO SN\* RECIPIENTS: TREND, % CHANGE FROM PREVIOUS MONTH; % CHANGE FROM PREVIOUS YEAR

		TOTAL 60 Mo Converted RECIPIENTS	PERCENT MONTHLY CHANGE	PERCENT YEARLY CHANGE
08	1	91,940	-0.9%	5.4%
	2	92,378	0.5%	7.5%
	3	91,426	-1.0%	7.9%
	4	90,597	-0.9%	8.3%
	5	91,226	0.7%	9.1%
	6	89,777	-1.6%	5.8%
	7	87,714	-2.3%	-8.7%
	8	86,713	-1.1%	-8.8%
	9	84,923	-2.1%	-8.4%
	10	85,921	1.2%	-7.8%
	11	85,388	-0.6%	-8.5%
	12	85,661	0.3%	-7.6%
09	1	86,261	0.7%	-6.2%
	2	85,954	-0.4%	-7.0%
	3	85,893	-0.1%	-6.1%
	4	85,875	0.0%	-5.2%
	5	85,742	-0.2%	-6.0%
	6	88,089	2.7%	-1.9%
	7	88,562	0.5%	1.0%
	8	89,227	0.8%	2.9%
	9	89,024	-0.2%	4.8%
	10	90,687	1.9%	5.5%
	11	90,764	0.1%	6.3%
	12	91,345	0.6%	6.6%
10	1	90,781	-0.6%	5.2%
	2	89,687	-1.2%	4.3%
	3	87,082	-2.9%	1.4%
	4	89,401	2.7%	4.1%
	5	87,830	-1.8%	2.4%
	6	87,370	-0.5%	-0.8%
	7	85,933	-1.6%	-3.0%
	8	85,674	-0.3%	-4.0%
	9	86,241	0.7%	-3.1%
	10	87,190	1.1%	-3.9%
	11	87,511	0.4%	-3.6%
	12	87,700	0.2%	-4.0%
11	1	87,443	-0.3%	-3.7%
	2	87,780	0.4%	-2.1%
	3	86,925	-1.0%	-0.2%
	4	87,513	0.7%	-2.1%
	5	86,801	-0.8%	-1.2%
	6	84,617	-2.5%	-3.2%
	7	86,612	2.4%	0.8%
	8	85,784	-1.0%	0.1%
	9	85,774	0.0%	-0.5%
	10	86,915	1.3%	-0.3%
	11	85,395	-1.7%	-2.4%
	12	89,061	4.3%	1.6%
12	1	87,588	-1.7%	0.2%
	2	87,708	0.1%	-0.1%
	3	86,363	-1.5%	-0.6%

#### TREND IN 60 Mo. CONVERTED RECIPIENTS 2008-2012



\* SN = Safety Net

\*\*

July 2007 data reflects transferred cases mostly from SNA to 60 Month Converted due to State audit reconciliation.

© Copyright 2012 The City of New York, Department of Social Services  
For permission to reproduce all or part  
Of this material contact the New York City  
Human Resources Administration