

FIRE & EMS SERVICES

FDNY PERFORMANCE INDICATORS—CITY-WIDE LEVEL

Most Important Stats for Fire and EMS

	FY 02	FY 02	FY 03	FY 03	FY 04	FY 04	FY 05	FY 05	FY 06	FY 06
<u>Fire Service</u>	<u>Incidents</u>	<u>Runs</u>	<u>Incidents</u>	<u>Runs</u>	<u>Incidents</u>	<u>Runs</u>	<u>Incidents</u>	<u>Runs</u>	<u>Incidents</u>	<u>Runs</u>
Structural Fires	26,928	127,777	26,431	127,129	27,805	132,569	27,610	133,345	28,372	136,523
Non-structural Fires	27,399	61,174	24,827	63,701	24,416	63,977	21,519	56,654	22,214	56,489
Non-fire Emergencies	169,028	390,752	176,446	418,714	184,274	452,378	180,284	465,343	199,690	503,924
Medical Emergencies	156,064	164,660	162,935	172,622	178,887	189,171	201,812	223,562	205,050	227,528
MFA's*	48,746	130,174	42,577	116,321	39,945	113,360	34,730	99,395	30,002	85,325
Total	428,165	874,537	433,216	898,487	455,327	951,455	465,955	978,299	485,328	1,009,789
<u>EMS</u>	<u>Incidents</u>	<u>Runs</u>	<u>Incidents</u>	<u>Runs</u>	<u>Incidents</u>	<u>Runs</u>	<u>Incidents</u>	<u>Runs</u>	<u>Incidents</u>	<u>Runs</u>
Segments 1-3†	383,044	510,155	391,543	519,828	401,197	527,520	406,452	533,257	408,451	533,663
Total, Segments 1-8	1,089,812	1,274,224	1,088,378	1,267,340	1,118,117	1,285,836	1,129,842	1,293,555	1,152,109	1,322,206

* Malicious False Alarms

† Life-threatening

In all cases above, *Runs* are equivalent to apparatus responses.

Key Statistics for Fire and EMS Operations

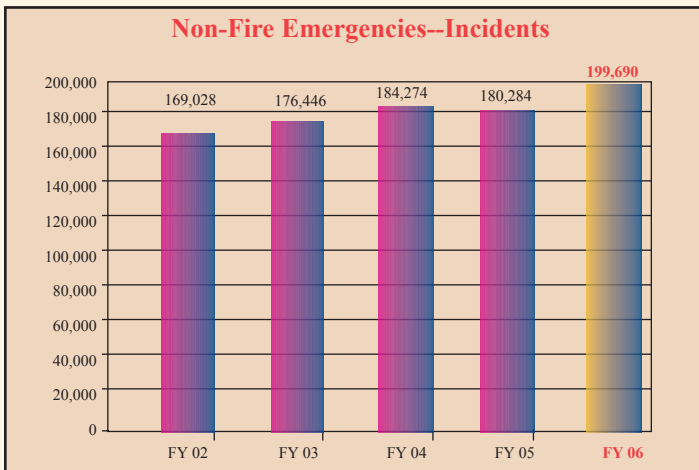
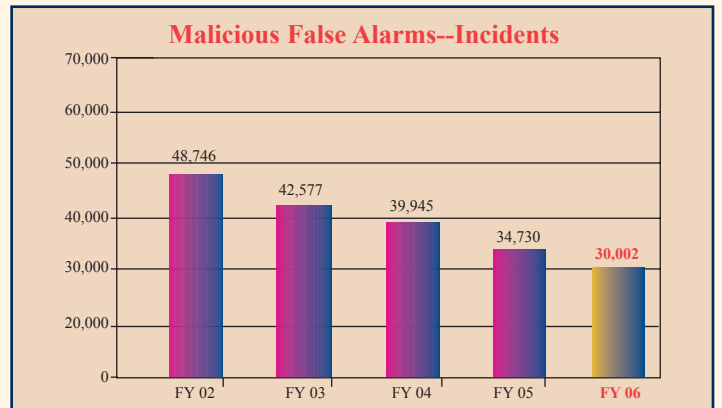
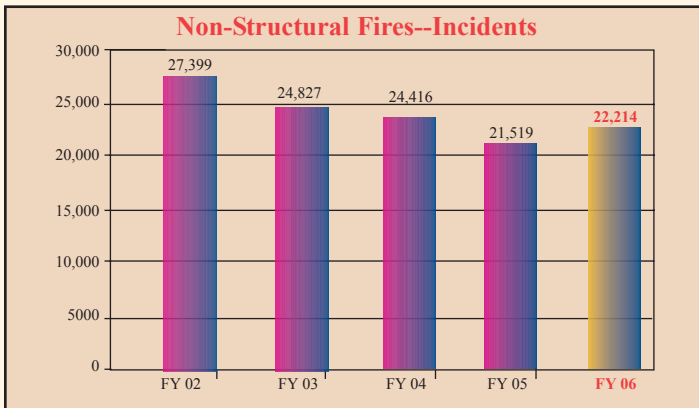
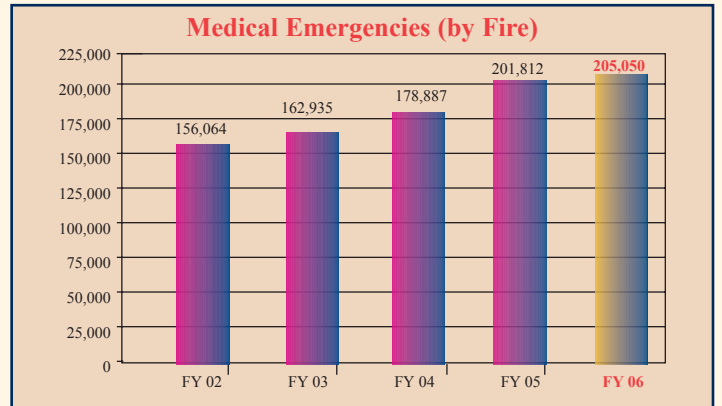
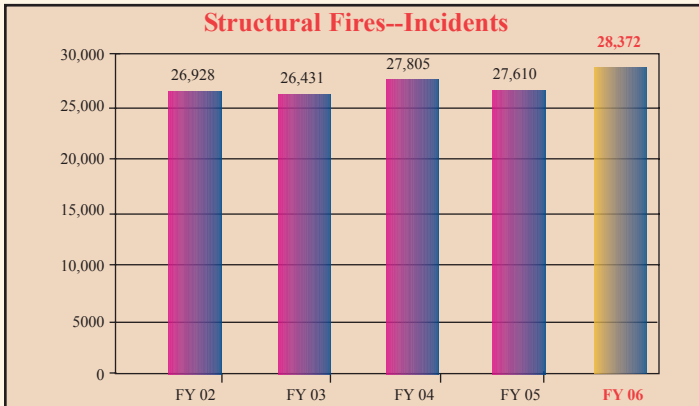
Response Time	FY 02	FY 03	FY 04	FY 05	FY 06
Average to All Emergencies	4:42	4:44	4:47	5:07	4:58
Structural Fires	4:14	4:16	4:18	4:31	4:32
Non-structural Fires	4:47	4:43	4:44	5:02	5:01
Non-fire Emergencies	5:13	5:12	5:13	5:34	5:27
Medical Emergencies (Fire Units Only)	4:17	4:23	4:28	4:48	4:30
Segment 1-3 Life-threatening (EMS Only)	6:52	6:54	7:00	6:46	6:42
Segment 1-3 Life-threatening (Fire and EMS)	5:56	5:57	6:01	5:58	5:49

Civilian Fire Fatalities

	FY 92	FY 93	FY 94	FY 95	FY 96	FY 97	FY 98	FY 99	FY 00	FY 01	FY 02	FY 03	FY 04	FY 05	FY 06
Fatalities	172	170	158	171	155	138	118	114	133	107	98	109	106	91	92

FIRE SERVICES

FDNY PERFORMANCE INDICATORS—CITY-WIDE LEVEL



EMS & BFI SERVICES

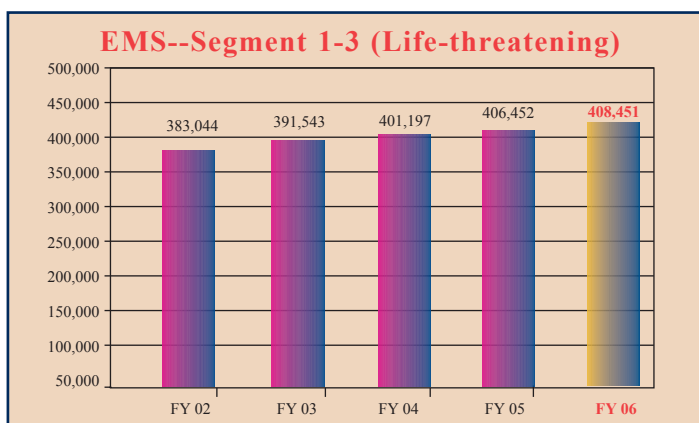
FDNY PERFORMANCE INDICATORS—CITY-WIDE LEVEL

EMS— Calendar 2005 & Fiscal 2006

FDNY EMS Runs Calendar Year 2005	
City-wide* Total:	1,312,166
Brooklyn	394,781
Bronx	293,264
Manhattan	315,699
Queens	254,524
Staten Island	53,868

* Some calls were not associated with a borough. Therefore, the borough totals do not equal the City-wide total.

Top 25 EMS Unit Responses Calendar Year 2005		
Rank	Ambulance Unit	Number of Responses
1	12B2	2246
2	12C3	2213
3	12C2	2202
4	12A2	2194
5	12A3	2143
6	07C3	2121
7	07B3	2116
8	07C2	2115
9	37D3	2086
10	12D2	2080
11	57C3	2075
12	16E3	2055
13	28A3	2049
14	37B3	2037
15	07B2	2016
16	26F3	2003
17	12B3	1987
18	08A3	1977
19	46B3	1972
20	02A2	1967
21	07C1	1960
22	01B2	1950
23	43E3	1949
24	02A3	1934
25	02B2	1928



BFI— Fiscal 2006

Bureau of Fire Investigation	
All Cases Investigated	6207
Total Incendiary Fires	2448
All BFI Arrests/Assists	327

Fireworks Task Force					
	7/5/01- 7/4/02	7/5/02- 7/4/03	7/5/03- 7/4/04	7/5/04- 7/4/05	7/5/05- 7/4/06
CATEGORY	2002	2003	2004	2005	2006
Cases Confiscated	1167	963	872	1595	1602
Arrests	18	14	17	109	67
Injuries	6	6	8	7	6

Causes of Fatal Fires	
	Fiscal Year 06
Non-Accidental (Intentional)	13
Smoking	17
Candles	10
Cooking	5
Matches/Open Flame	12
Electrical Heater	1
Electrical/Extension Cord	17
Electrical/All Others	3
Gas/Vapors	7
Other	7
Total Fire Fatalities--All Causes	92