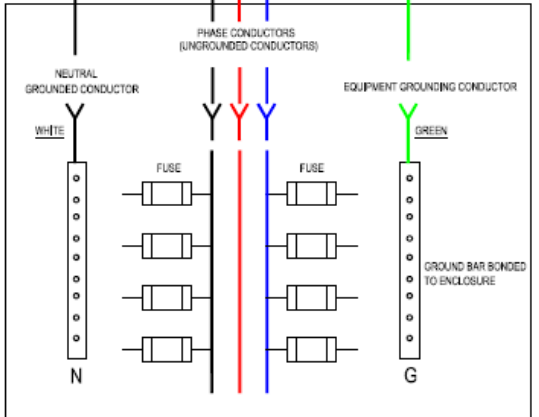
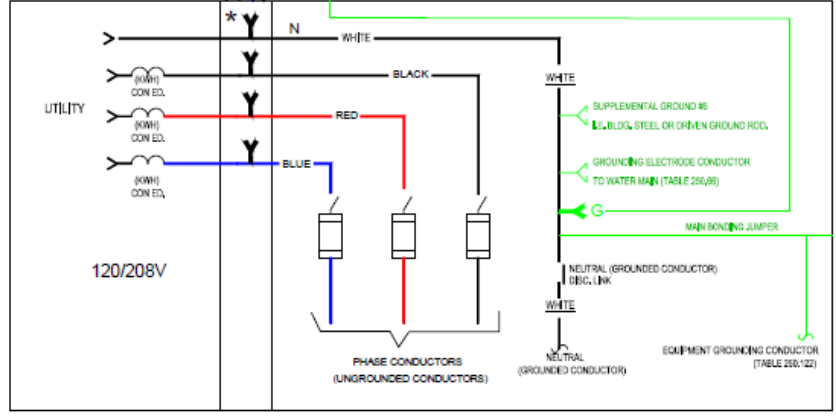


RACEWAY BONDED TO ENCLOSURE 250.118



* FIRE ALARM TAP LOCATED AFTER THE CON Edison C.T'S, AND AHEAD OF THE SERVICE SWITCH.

- 6 SERVICE SWITCHES PERMITTED PER CON EDISON SERVICE
- FIRE ALARM SERVICE SWITCH DOES NOT REQUIRE ADMISORY BOARD APPROVAL (110.2 B EXCEPTION #1) ONLY IF FIRE ALARM WORK IS BEING DONE.
- FIRE ALARM SERVICE SWITCH IS NOT CONSIDERED ONE OF THE 6 PERMITTED SERVICE SWITCHES.

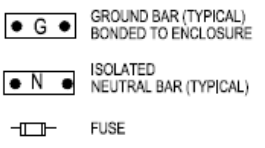
CT CABINET

SERVICE SWITCH - FIRE ALARM TAP

TYPICAL FIRE ALARM FUSED CUT-OUT PANEL 120/208V.

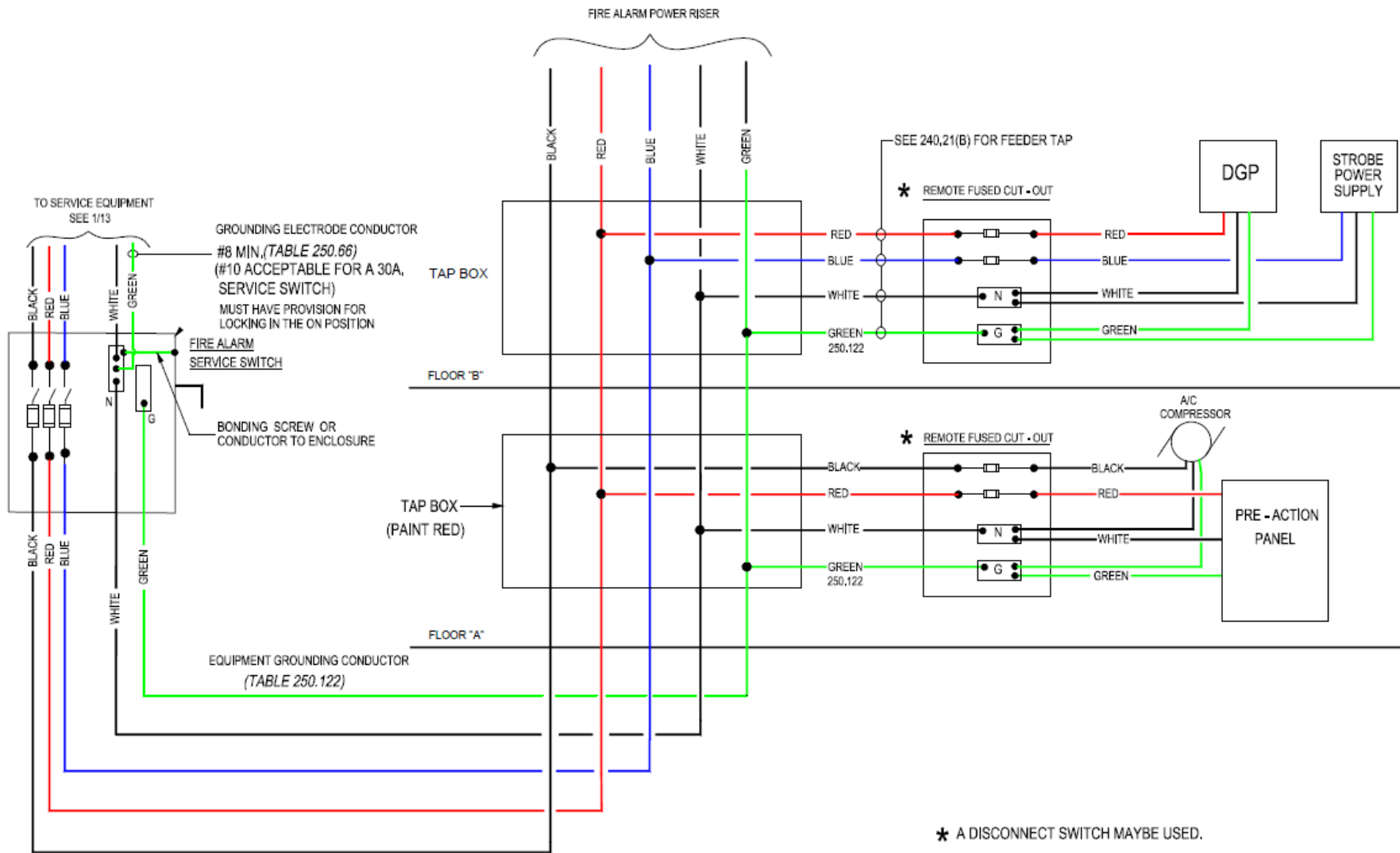
120/208V

- SERVICE SWITCH MUST BE RATED FOR AVAILABLE FAULT CURRENT AT SERVICE POINT.
- ALL NPLFA DISTRIBUTION DEVICES AND PULL BOXES MUST BE LABELED AND PAINTED RED.
- ALL CONDUIT TO BE RMC, IMC, OR MI CABLE. (760.46)
- RMC MAY BE RGS OR ALUMINUM

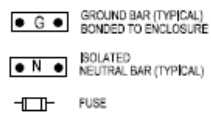


TYPICAL FIRE ALARM SERVICE SWITCH 120/208

INDUSTRY REFERENCE SKETCH: 1 / 10



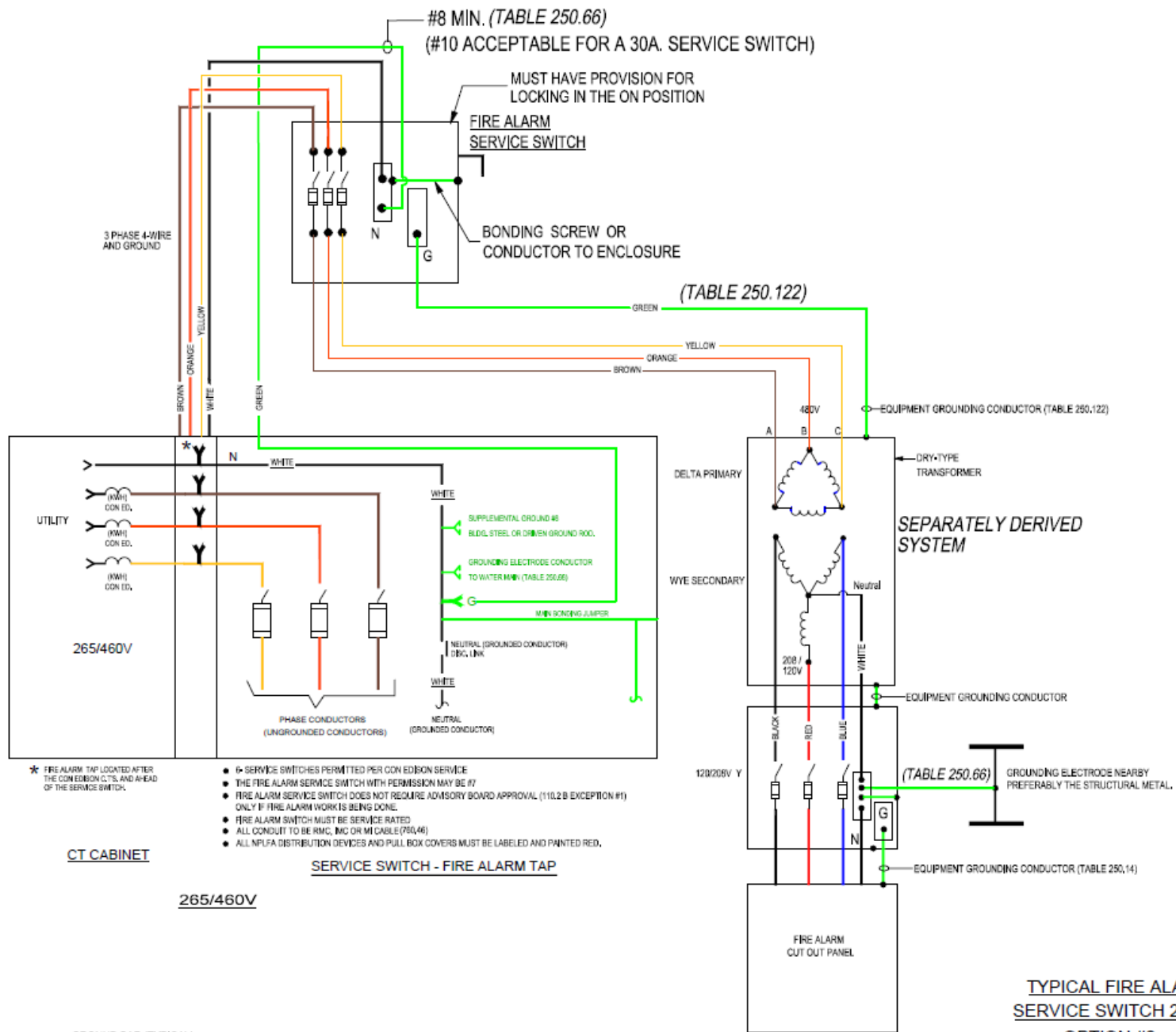
- FUSE SIZE IN FIRE ALARM SERVICE SWITCH AND REMOTE FIRE ALARM CUT-OUTS MUST COORDINATE.
- RISER CONDUCTORS MUST BE CONTINUOUS OR SPLICED AT A LISTED TERMINAL DEVICE
- A LISTED DEVICE MUST BE USED FOR TAPPING FEEDER CONDUCTORS.
- ALL CONDUIT TO BE RMC, IMC, OR MI CABLE, (760.46)
- ALL NPLFA DISTRIBUTION DEVICES AND PULL BOX COVERS MUST BE LABELED AND PAINTED RED.



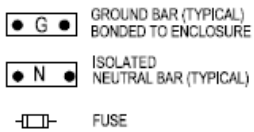
MULTI-STORY FIRE ALARM POWER RISER

INDUSTRY REFERENCE SKETCH: 2 / 10

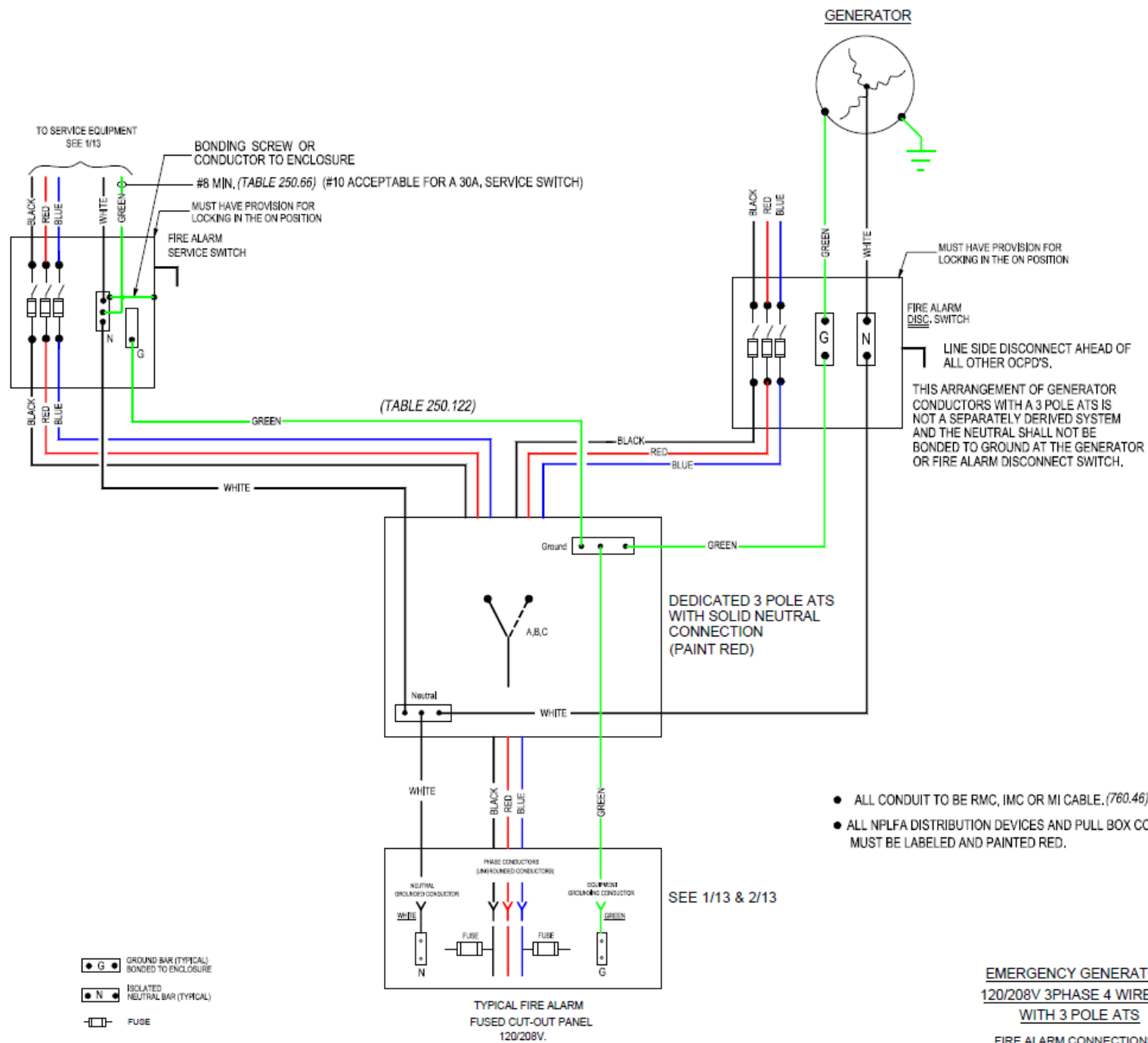
7/06/11

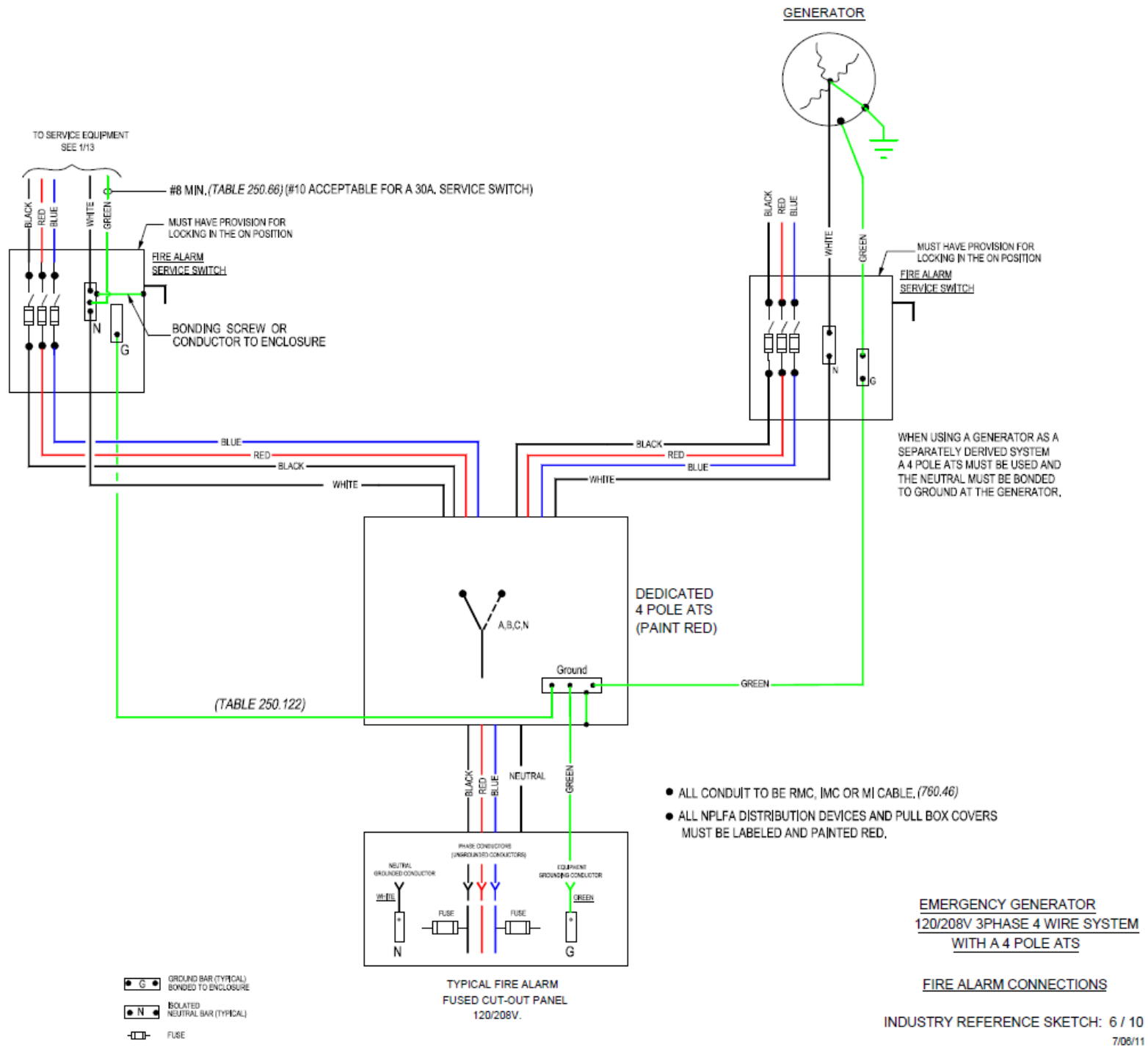


- * FIRE ALARM TAP LOCATED AFTER THE CONNECTION C.T.S. AND AHEAD OF THE SERVICE SWITCH.
- SERVICE SWITCHES PERMITTED PER CONNECTION SERVICE
- THE FIRE ALARM SERVICE SWITCH WITH PERMISSION MAY BE #7
- FIRE ALARM SERVICE SWITCH DOES NOT REQUIRE ADVISORY BOARD APPROVAL (110.2 B EXCEPTION #1) ONLY IF FIRE ALARM WORK IS BEING DONE.
- FIRE ALARM SWITCH MUST BE SERVICE RATED
- ALL CONDUIT TO BE RMC, IMC OR MI CABLE (750.46)
- ALL NFPA DISTRIBUTION DEVICES AND PULL BOX COVERS MUST BE LABELED AND PAINTED RED.



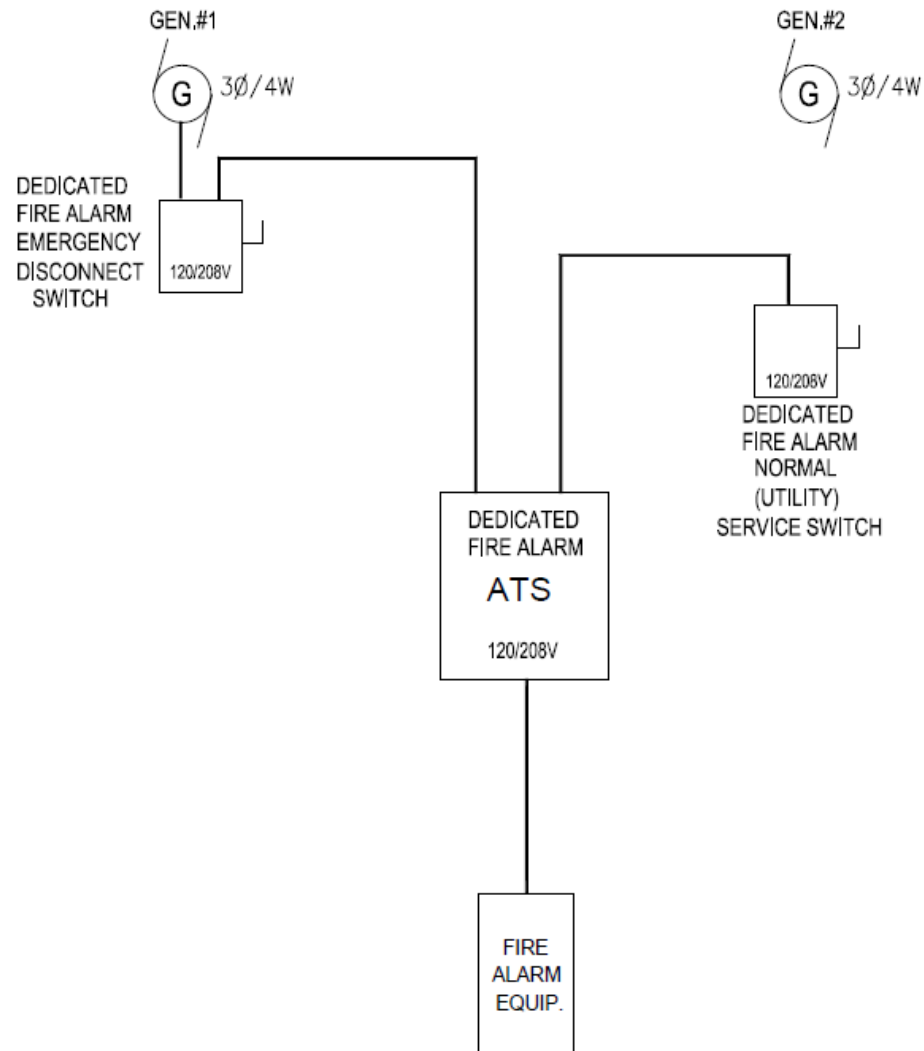
TYPICAL FIRE ALARM SERVICE SWITCH 265/460V OPTION #2
 "GROUNDING ELECTRODE CONNECTION AT THE FIRST DISCONNECTING MEANS"





MULTIPLE EMERGENCY GENERATORS

NON - PARALLELED



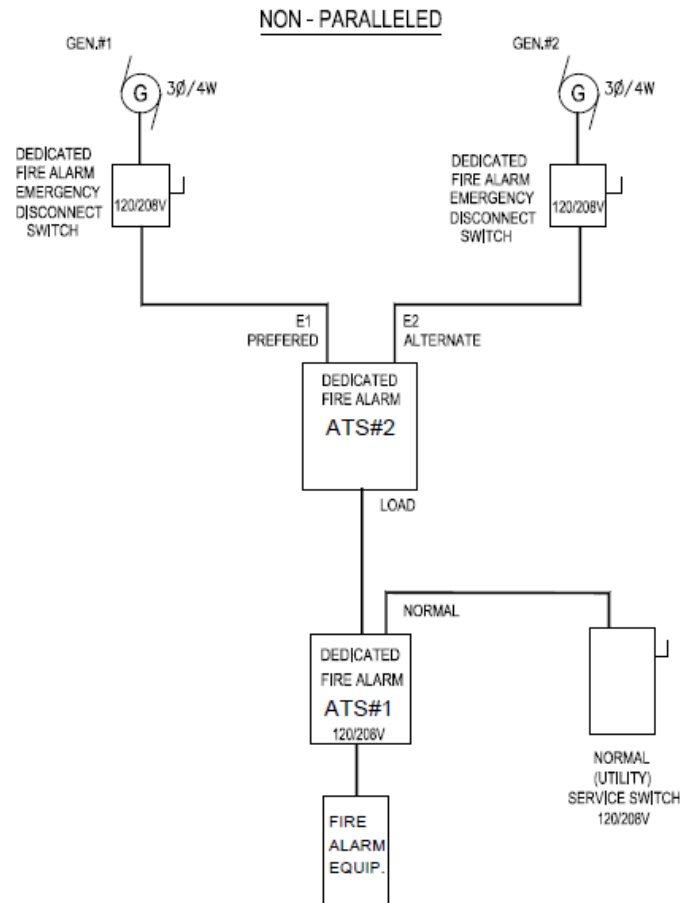
- ALL CONDUIT TO BE RMC, IMC OR MI CABLE (760.46)
- ALL NPLFA DISTRIBUTION DEVICES AND PULL BOX COVERS MUST BE LABELED AND PAINTED RED.

FIRE ALARM EMERGENCY CONNECTIONS
TWO OR MORE NON - PARALLELED GENERATING
SOURCES WITH A FIRE ALARM CONNECTION
TO A SINGLE GENERATOR SOURCE.

INDUSTRY REFERENCE SKETCH: 7 / 10

7/06/11

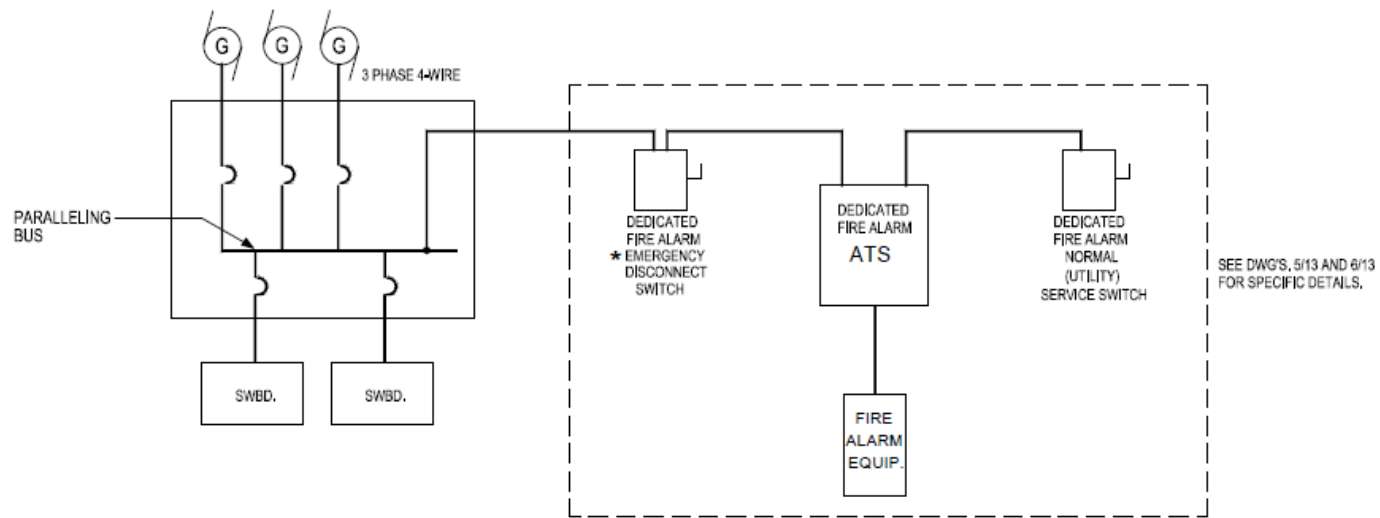
MULTIPLE EMERGENCY GENERATORS



- ALL CONDUIT TO BE RMC, IMC OR MI CABLE (760.46)
- ATS#1 SHALL HAVE PROVISION FOR STARTING BOTH EMERGENCY GENERATORS ON LOSS OF POWER.
- ALL NPLFA DISTRIBUTION DEVICES AND PULL BOX COVERS MUST BE LABELED AND PAINTED RED.

FIRE ALARM EMERGENCY OPTIONAL CONNECTIONS
TWO OR MORE NON - PARALLELED GENERATING
SOURCES WITH A FIRE ALARM CONNECTION
TO TWO GENERATOR SOURCES.

MULTIPLE EMERGENCY GENERATORS WITH PARALLELING SWITCHGEAR



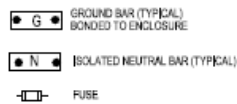
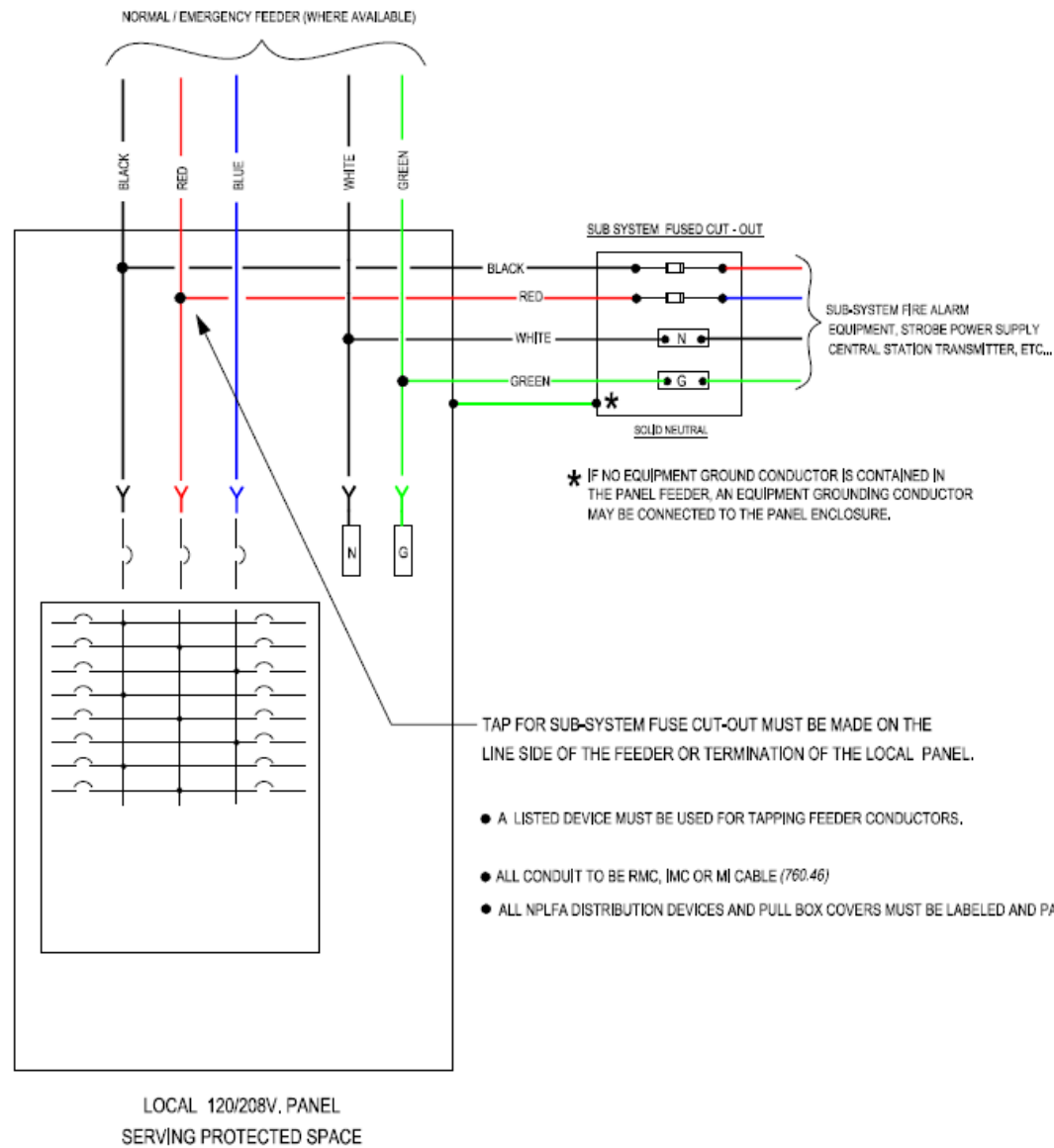
* DOES NOT REQUIRE A SERVICE SWITCH CONFIGURATION.

- ALL CONDUIT TO BE RMC, IMC OR MI CABLE (760.46)
- ALL NPLFA DISTRIBUTION DEVICES AND PULL BOX COVERS MUST BE LABELED AND PAINTED RED.

FIRE ALARM EMERGENCY CONNECTIONS
TO A PARALLELED GENERATOR SOURCE.

INDUSTRY REFERENCE SKETCH: 9 / 10

7/06/11



BUILDING SUB-SYSTEM FIRE ALARM FUSED CUT-OUT