



BQE OFF Ramp (Exit 31) at Wythe Avenue

Community Board 1 (BK) Presentation

September 10, 2019

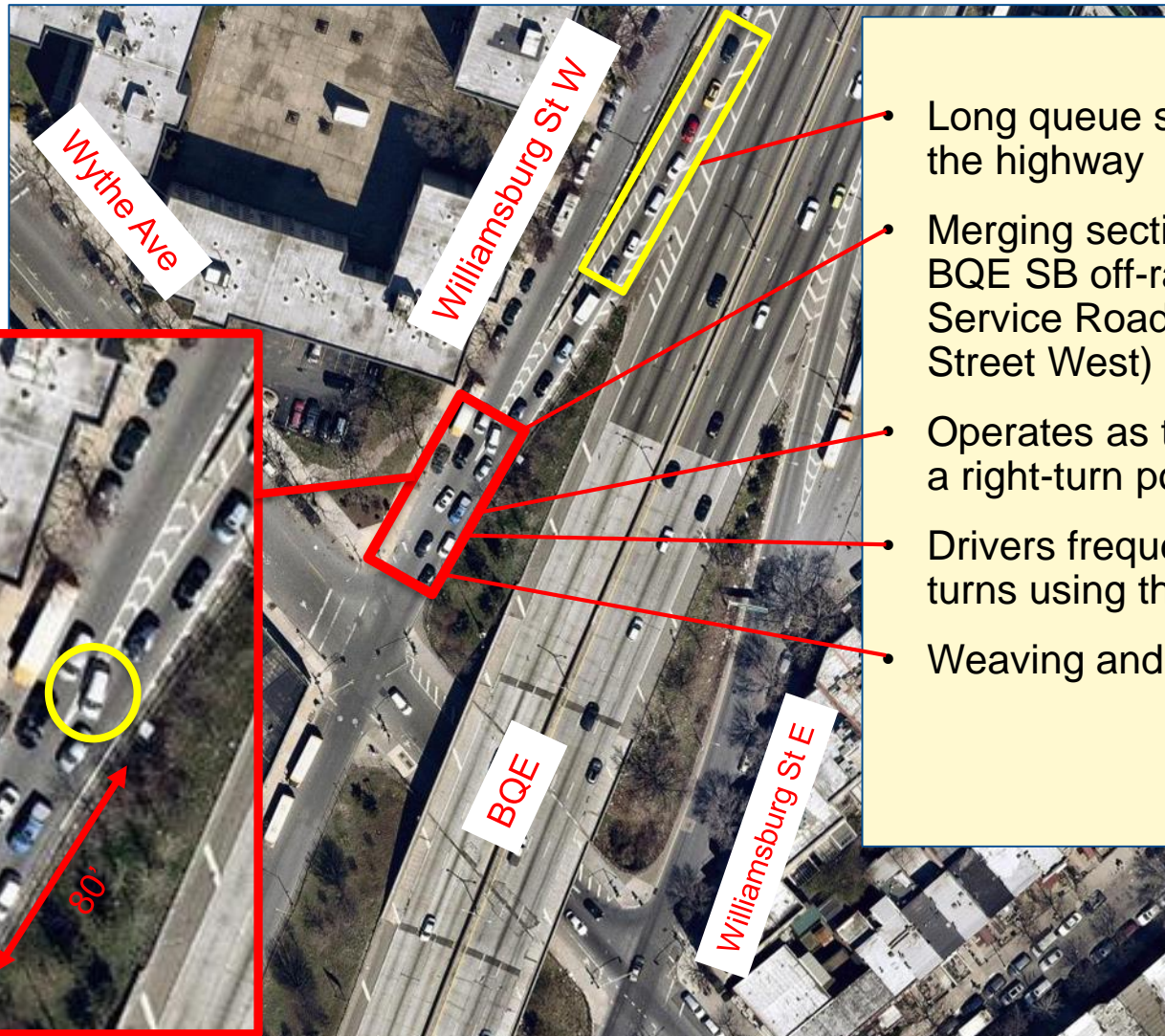
Project Background and Operational Issues



Project Background

- Williamsburg community and NYPD voiced concerns regarding excessive queue spillback from Exit Ramp (Exit 31- Wythe Ave/Kent Ave) onto SB BQE mainline
- Two pedestrian crashes and one severe injury during 2013-2017 period

Operational Issues



- Long queue spillback onto the highway
- Merging section between BQE SB off-ramp and Service Road (Williamsburg Street West) is only ~80 feet
- Operates as two-lanes with a right-turn pocket
- Drivers frequently make left-turns using the middle lane
- Weaving and lane changes

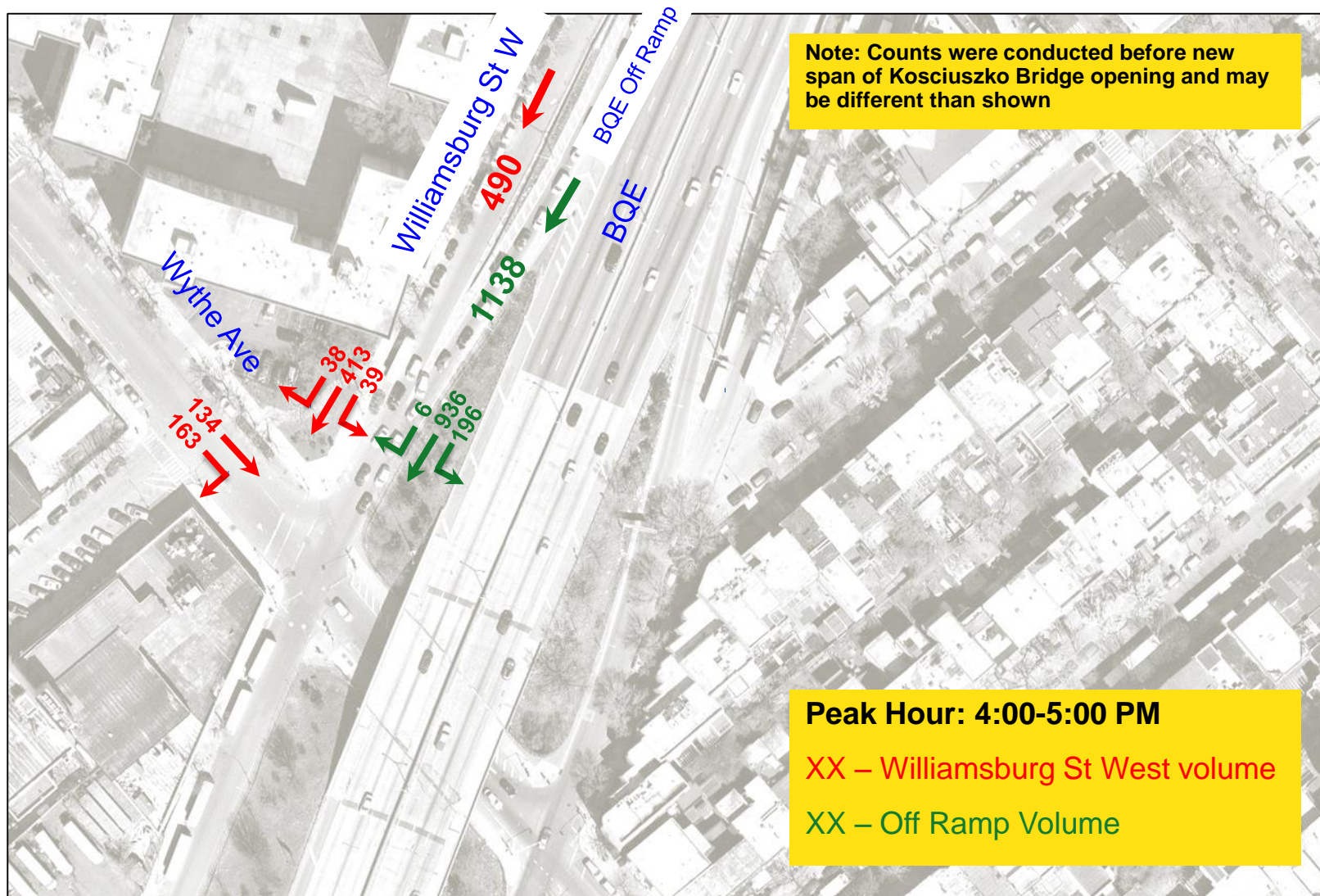
Operational Issues (Cont.)



Operational Issues (Cont.)



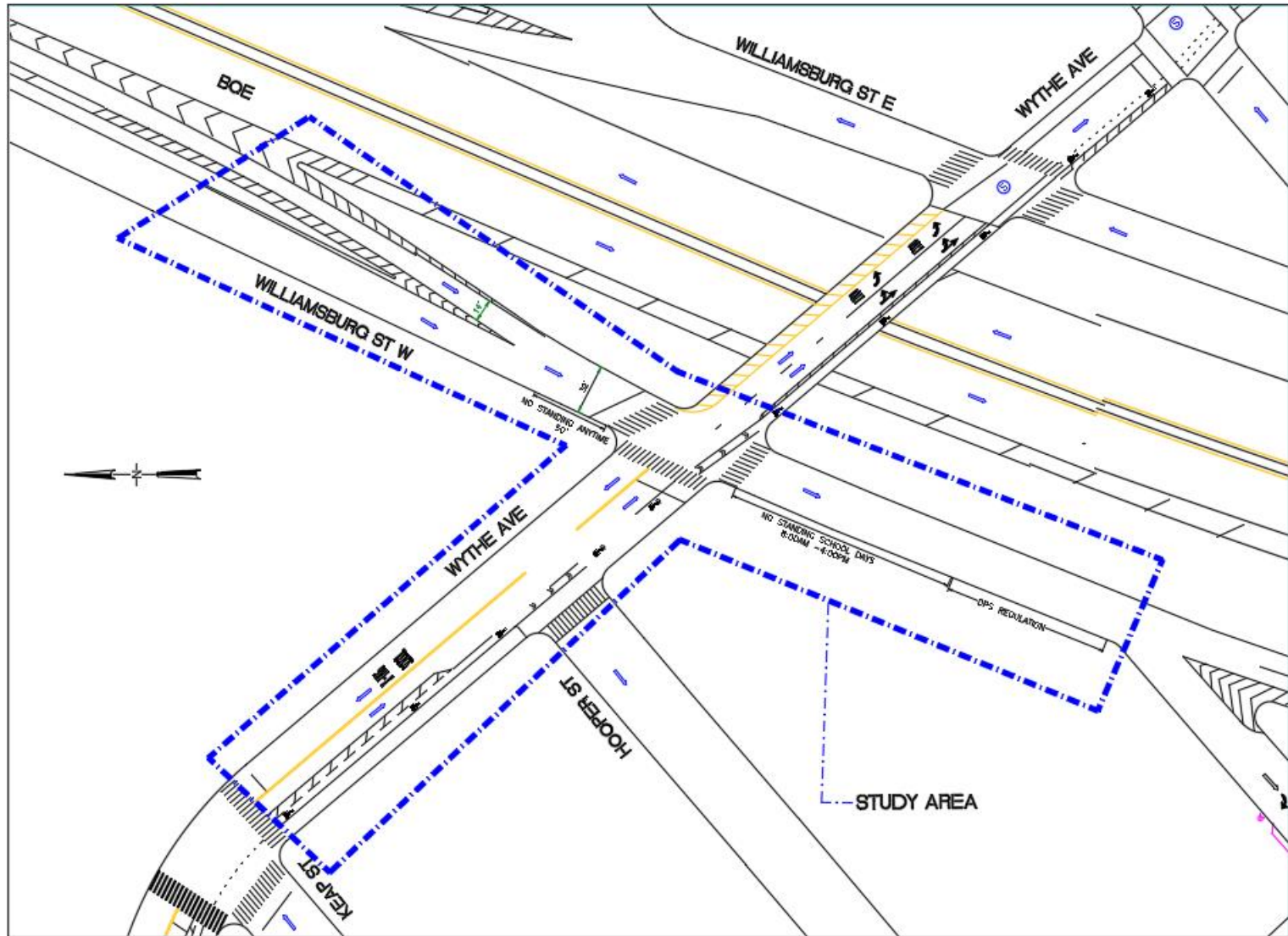
Traffic Volumes



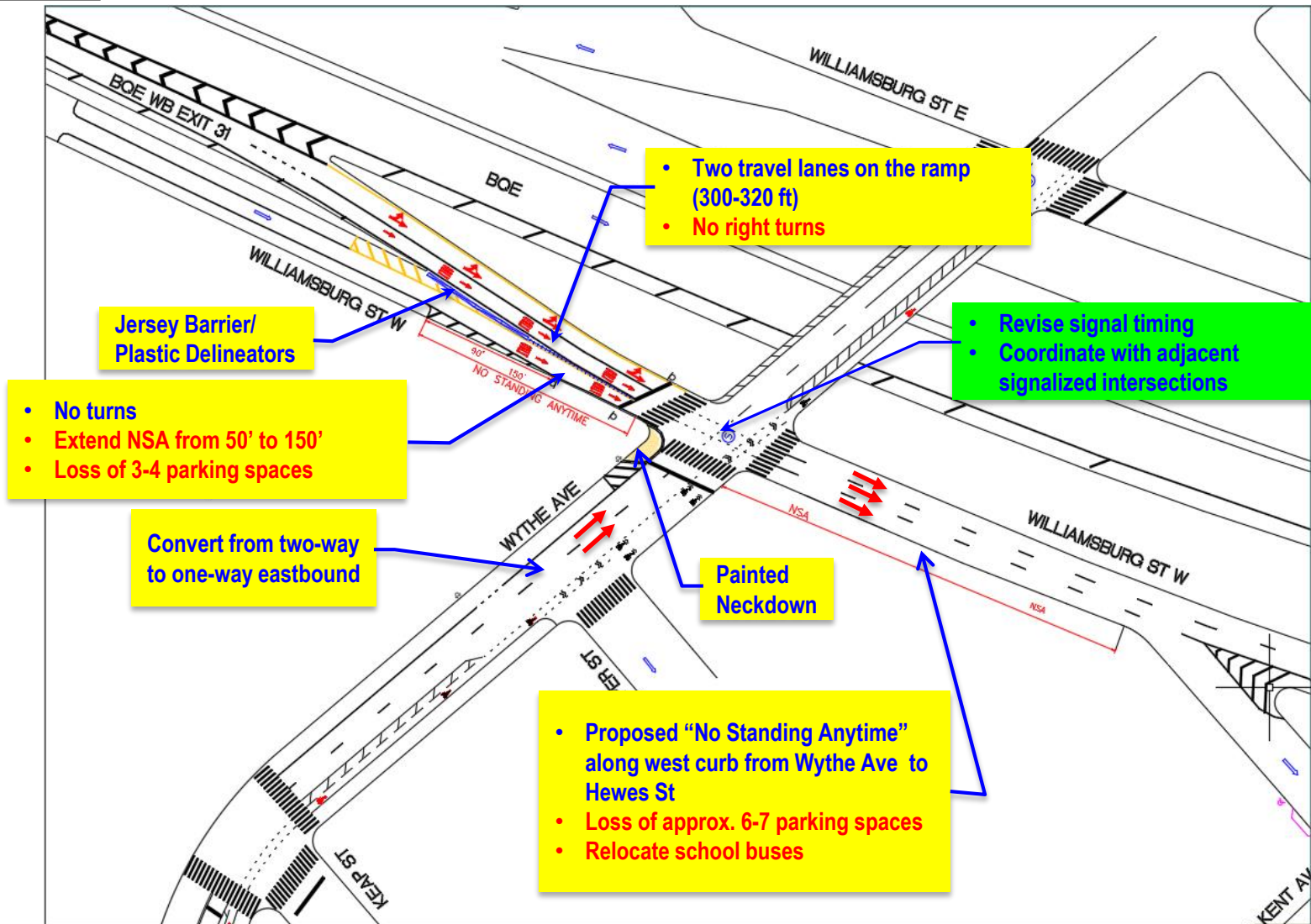
Proposed Improvements

2

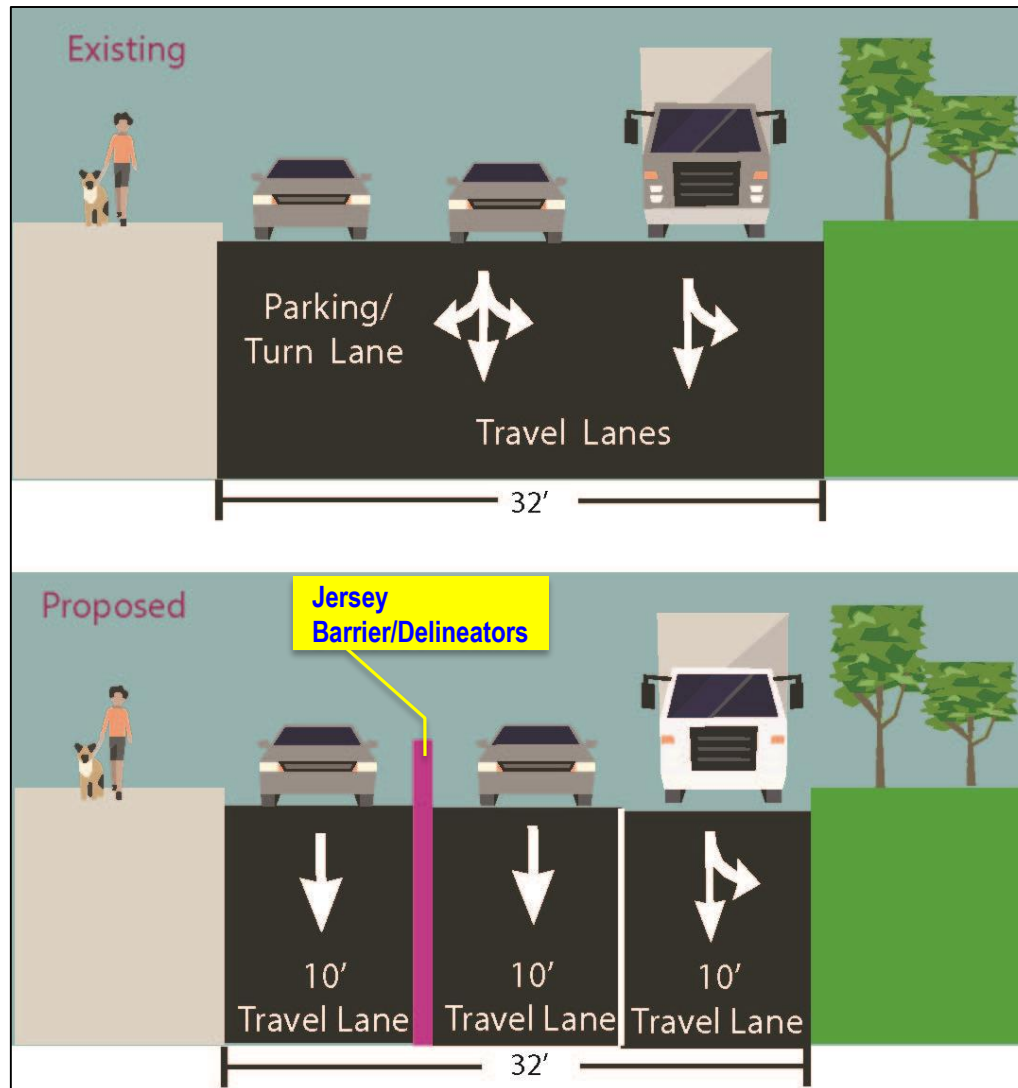
Existing



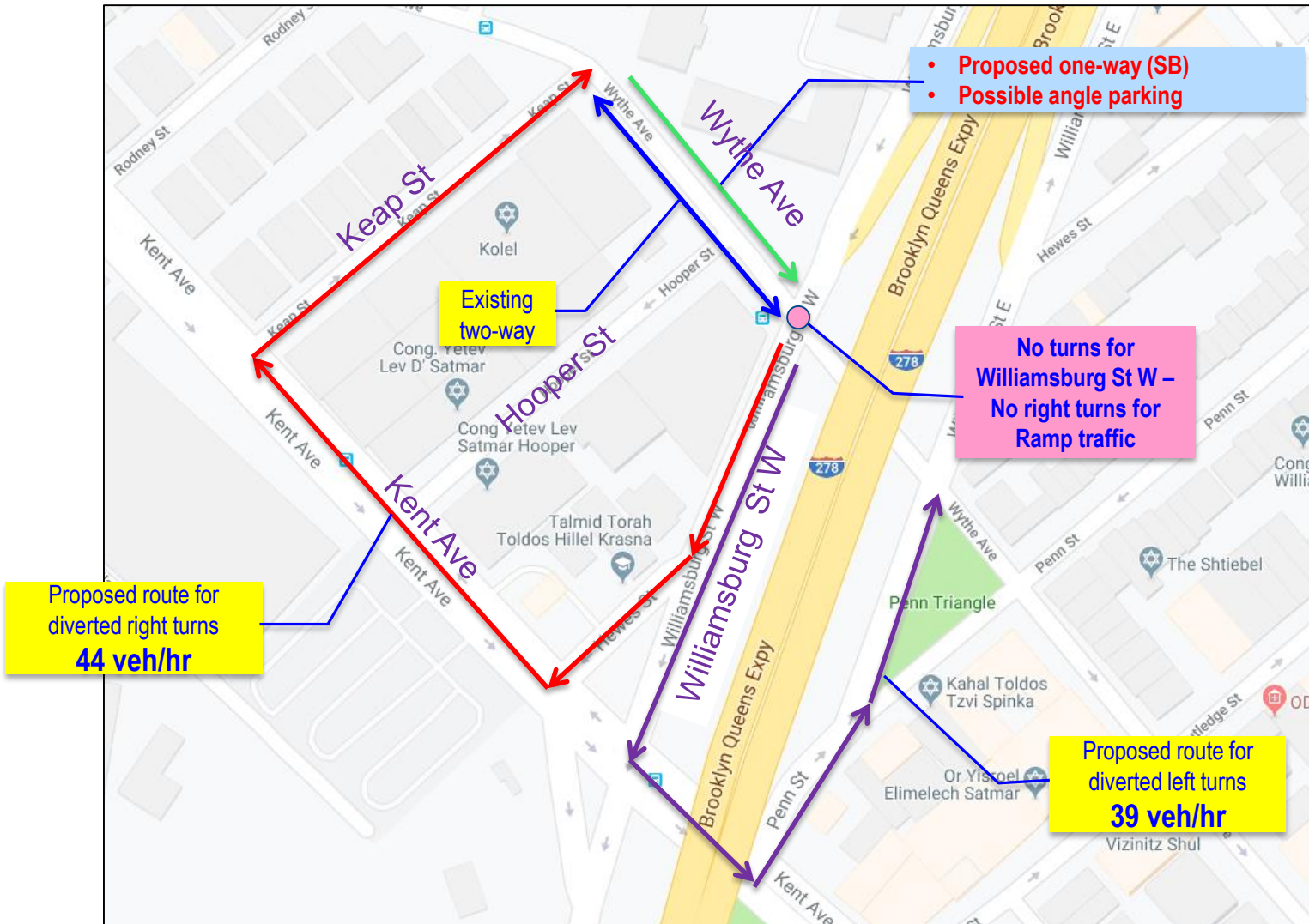
Proposed



Williamsburg St West - SB Approach Cross-Section



Proposed Traffic Routes and Street Directions



Benefits of the proposal

- Improves safety by eliminating weaving btw. Service Road and BQE Exit Ramp traffic
- Increases capacity by providing two-travel lanes for the ramp
- Organizes traffic movements
- Reduces queue spillback on BQE and enhances safety and operations on mainline BQE
- Travel time for ramp traffic is expected to be reduced from current 5.5 min/veh to approx. 1.5 - 2.0 min/veh
- Provides shorter/safer crossing for pedestrians crossing Wythe Avenue
- Improves overall signal operation by coordinating with adjacent intersections

Project Schedule

3

Next steps

- **CB1 feedback**

Thank You!

Questions?



NYCDOT



nyc_dot



nyc_dot



NYCDOT