

Van Siclen Ave / Pennsylvania Ave Bike Lanes

Jamaica Bay Greenway Access

2016



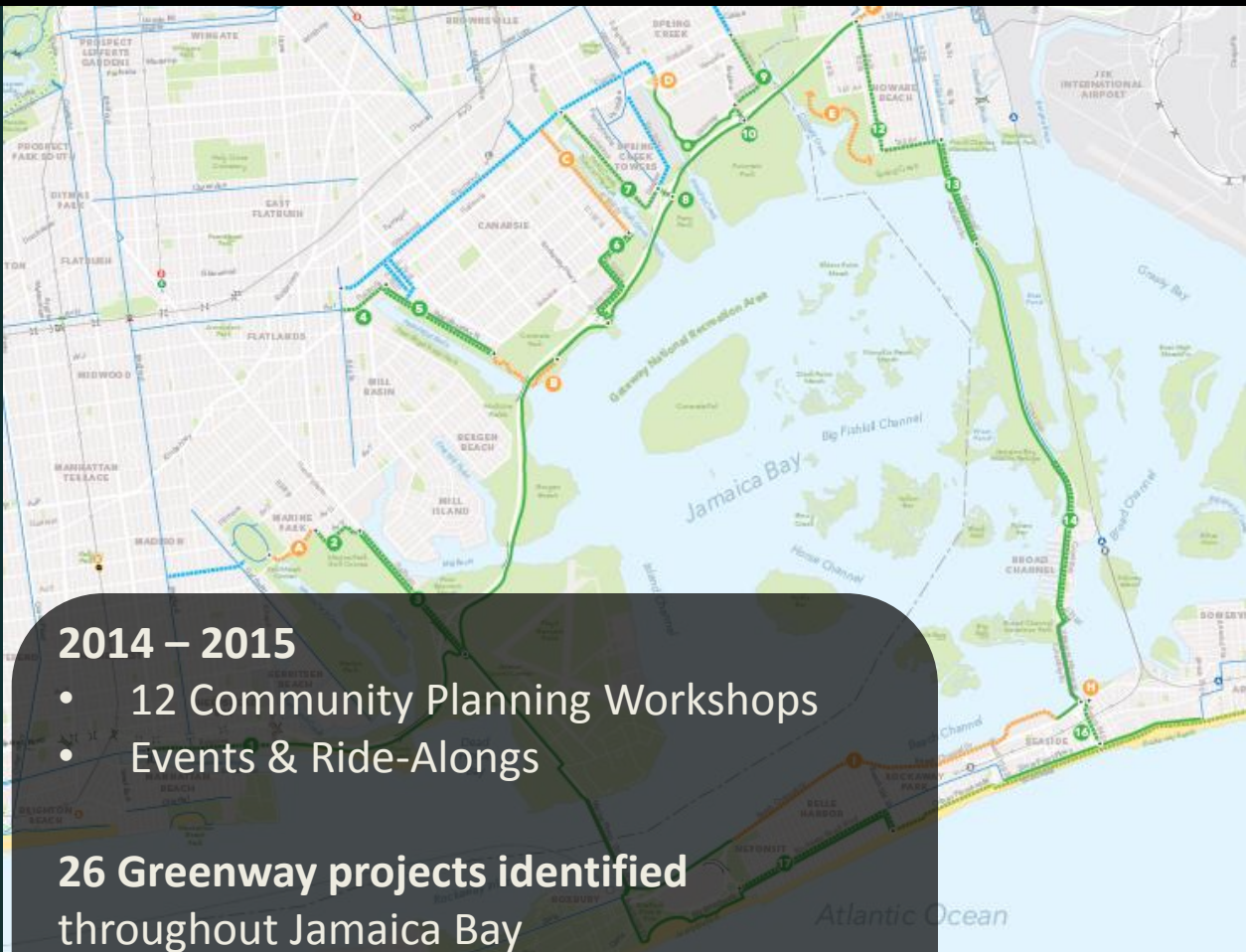
New York City Department of Transportation
Presented to Brooklyn Community Board 5 on March 7, 2016

Overview

- Background
- Existing Conditions & Proposal
 - Van Siclen Ave
 - Seaview Ave
 - Pennsylvania Ave
- Summary

Background

Jamaica Bay Greenway Implementation Plan



2014 – 2015

- 12 Community Planning Workshops
- Events & Ride-Alongs

26 Greenway projects identified
throughout Jamaica Bay

2016

- Plan will be released

**Jamaica Bay
Greenway**
Implementation Plan

**Coming
Soon!**



Canarsie/Spring Creek 4.8.14



Canarsie/Spring Creek 6.10.15

Background

**Van Sicken Ave
Bike Lanes
end at Vandalia Ave**

**Jamaica Bay
Greenway Entrance
at end of
Pennsylvania Ave**



LEGEND

- Proposed Bicycle Route
- Existing Bicycle Facilities
 - Protected Bicycle Path
 - Bicycle Lane
 - Shared Lane
 - Signed Route

Existing Conditions

Jamaica Bay Greenway

Pennsylvania Ave intersection
with the Belt Parkway
is a **barrier** from the **neighborhood** to
the **greenway** and **recreational**
resources of Jamaica Bay



Van Siclen Avenue and Seaview Avenue



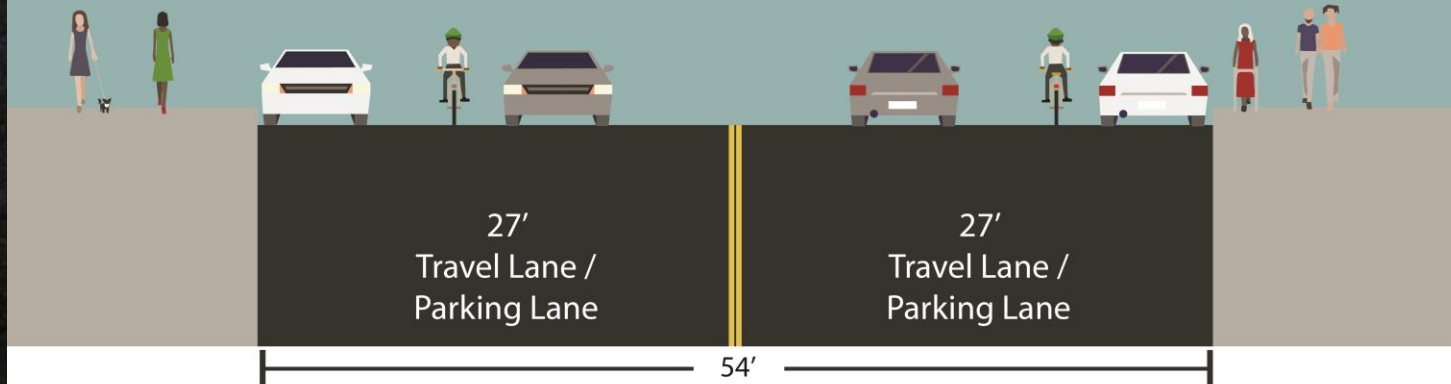
Disorganized
Roadway

Wide Travel Lanes
Encourage Speeding

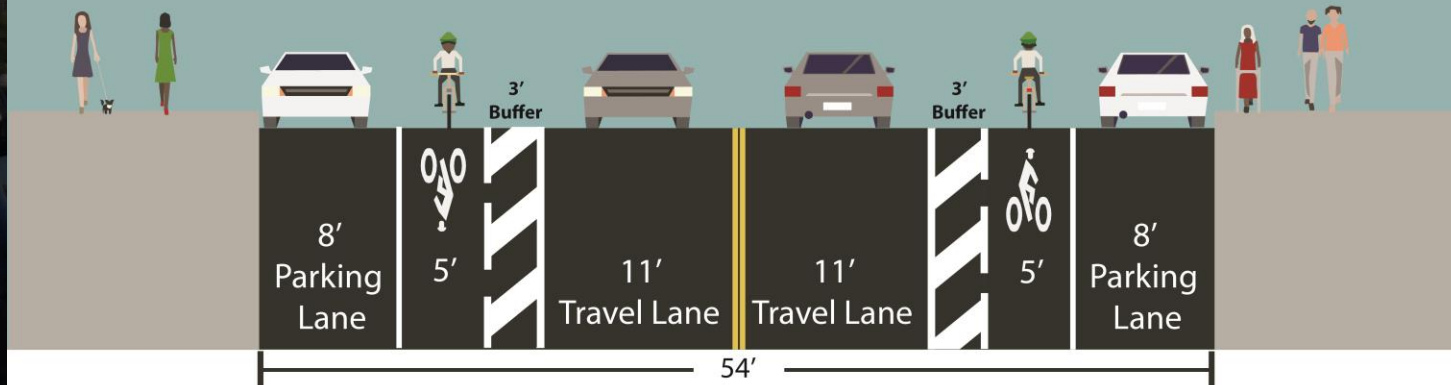
No Dedicated Space
for Cyclists

Van Siclen Avenue and Seaview Avenue

Existing



Proposed

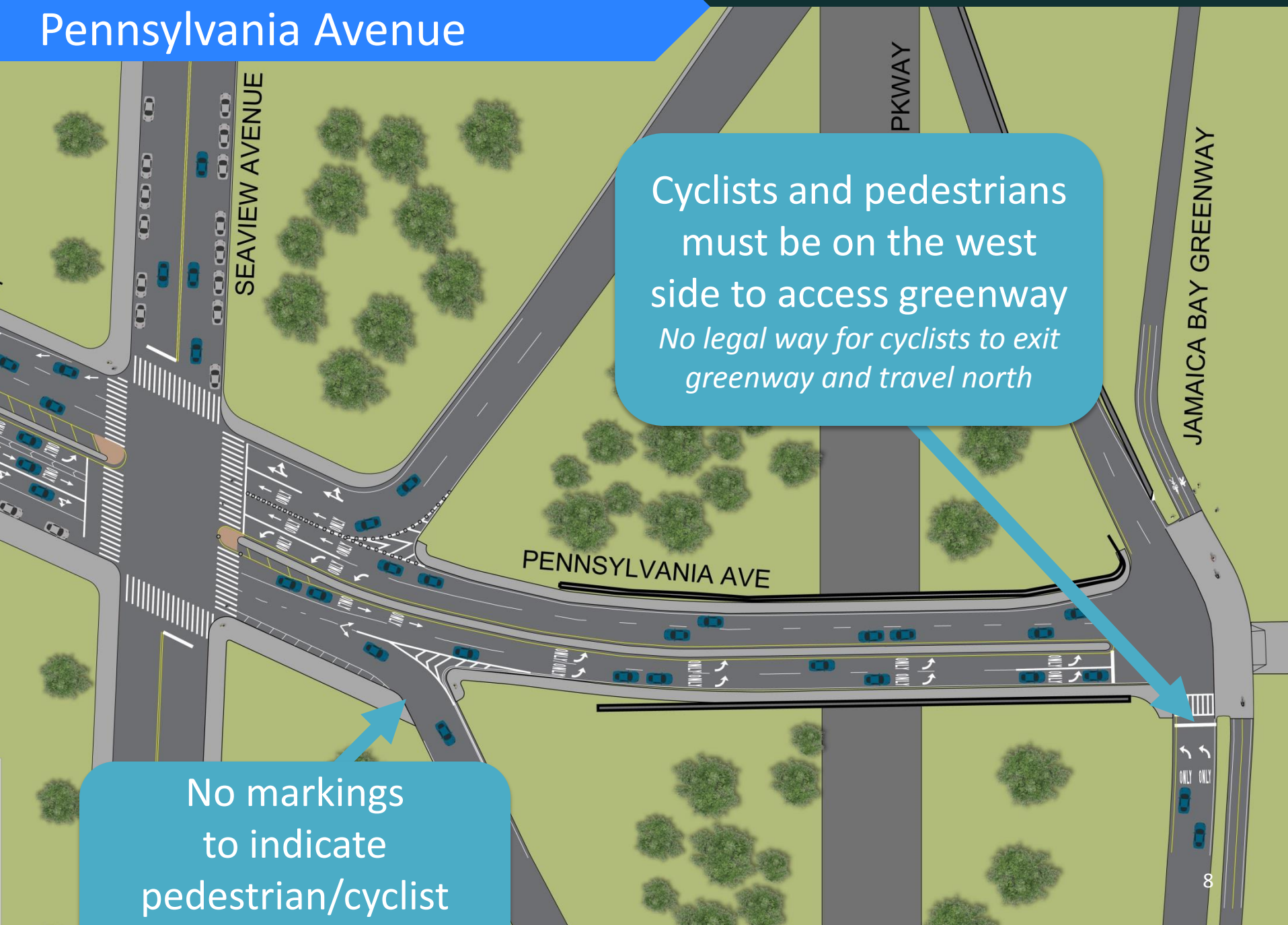


Organizes the
Roadway

Calms Traffic

Creates
Dedicated Space
for Cyclists

Pennsylvania Avenue



Cyclists and pedestrians
must be on the west
side to access greenway
*No legal way for cyclists to exit
greenway and travel north*

No markings
to indicate
pedestrian/cyclist

Pennsylvania Avenue at Belt Parkway

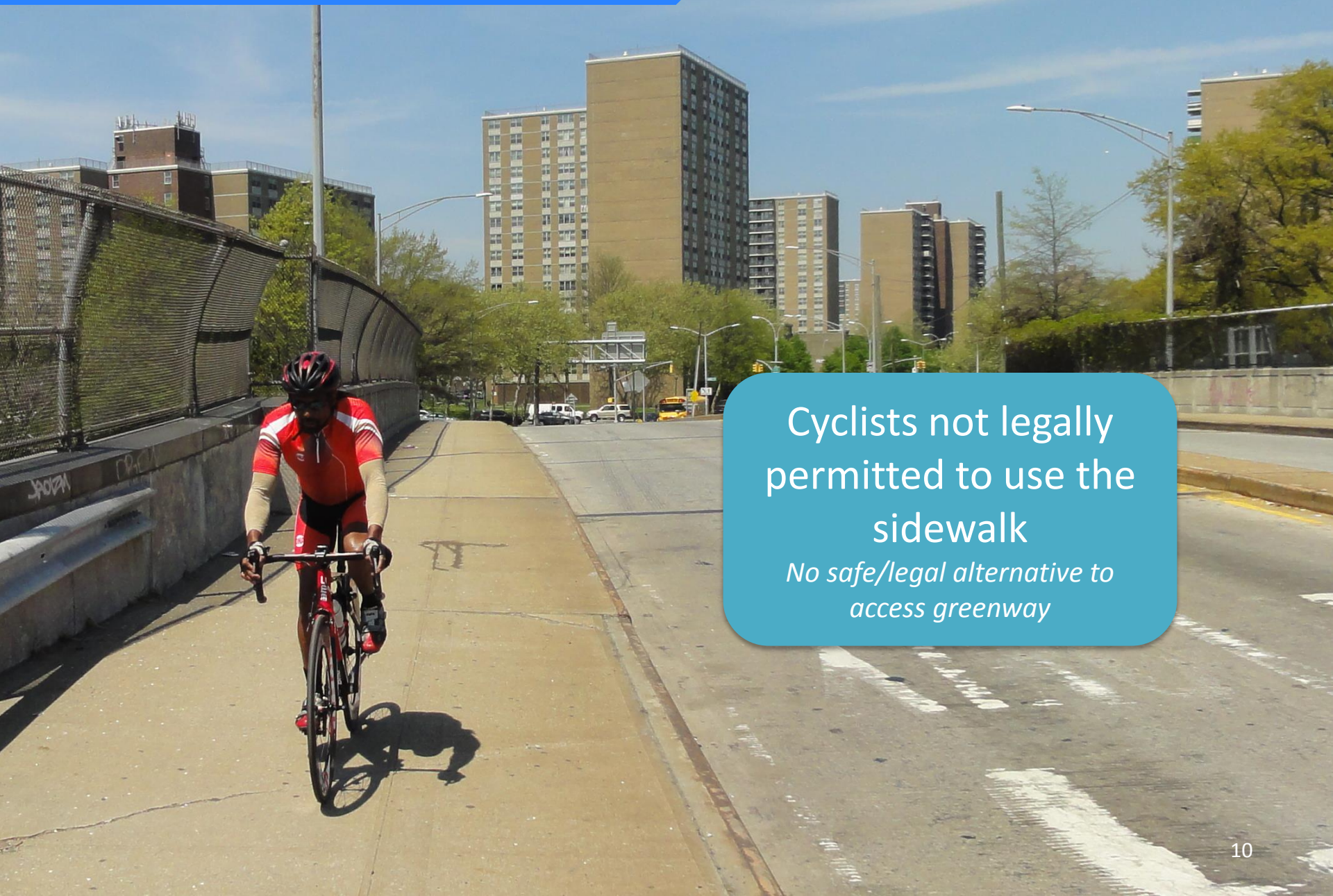


Long crossing distance

No markings or signs to indicate a crossing

Existing Conditions

Pennsylvania Avenue Overpass

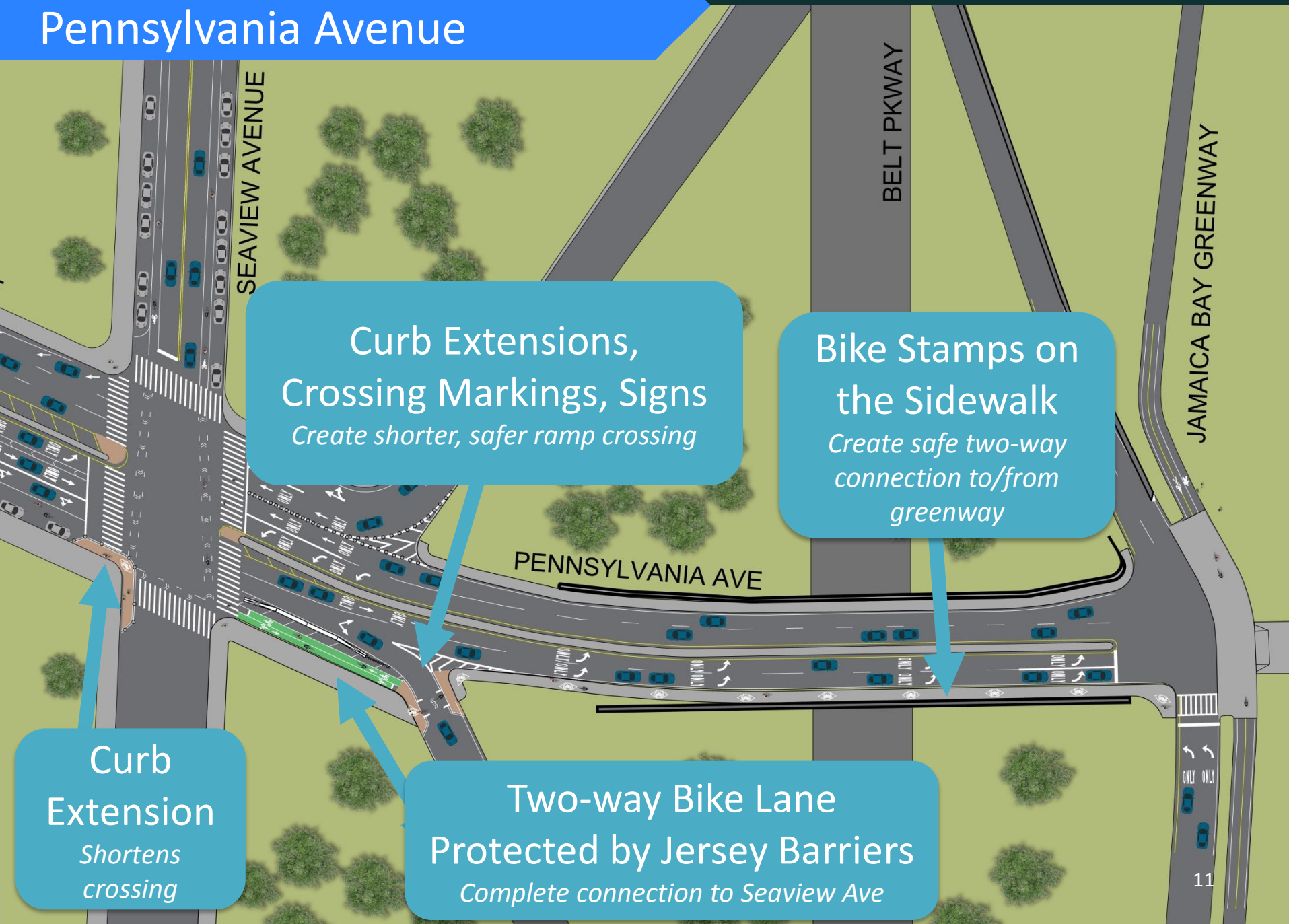


Cyclists not legally
permitted to use the
sidewalk

*No safe/legal alternative to
access greenway*

Proposal

Pennsylvania Avenue



**Curb Extensions,
Crossing Markings, Signs**
Create shorter, safer ramp crossing

**Bike Stamps on
the Sidewalk**
*Create safe two-way
connection to/from
greenway*

**Curb
Extension**
*Shortens
crossing*

**Two-way Bike Lane
Protected by Jersey Barriers**
Complete connection to Seaview Ave

Pennsylvania Avenue Approaching the Belt Parkway



Protected Space
for Cyclists

Pennsylvania Avenue Belt Parkway Ramp



New Markings and Signs
*indicate pedestrian/bicycle
crossing*

Summary

- Bicycle Lanes on Van Siclen and Seaview Avenues
 - Improve safety for cyclists
 - Organize the roadway for motorists
- Create Two-way Connection on Pennsylvania Avenue
 - Consolidate bicycle connection to the Greenway
 - Improve safety for both pedestrians and cyclists



Questions?



Thank
You