

EXCUSES?

- ◆ **I'm a safe driver**
That may be true, but what about the other driver who is reckless and crashes into you?
- ◆ **I can brace myself in a crash.**
Impossible. Hitting the windshield at 30 m.p.h. is like jumping head first out of a third story window.
- ◆ **I'm uncomfortable.**
Maybe, but wearing a safety belt is much more comfortable than hitting the dashboard or windshield if there is a crash.
- ◆ **I'll be trapped if the car catches fire or sinks.**
The odds of a car sinking or catching fire in a crash are very small, less than 1/2 of one percent. However, if this should happen, a safety belt will prevent you from hitting your head and losing consciousness so that you will be able to escape from your vehicle.
- ◆ **I'd rather be thrown clear of the crash.**
Your chances of being killed are 25 times greater if you are thrown from the vehicle.
- ◆ **I'm not going far and I'm driving slowly.**
Most crashes occur within 25 miles of your home and at speeds under 35 miles per hour.

Your safety belt is a



♥ hug ♥ for life.

Artwork: Jeffrey Stefanski

Use it!

Funded by NHTSA with a grant from the NYS
Governor's Traffic Safety Committee

Visit our Web Site at www.nyc.gov/dot
For Government Services and Information for NYC dial 311



New York City
Department of Transportation
Janette Sadik-Khan, Commissioner



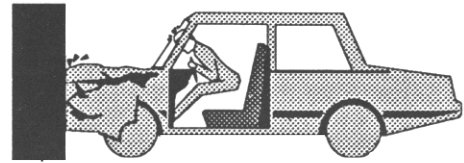
New York City
Michael R. Bloomberg, Mayor

BUCKLE UP



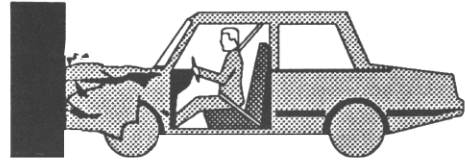
On impact, the car begins to crush and slow down. Within 1/10 of a second, the car stops, but the person inside is still moving forward at the same speed the vehicle was traveling.

- ◆ Make sure your safety belt fits right. It should sit low across the hips without riding up on the stomach. The shoulder part of the belt should be across the collar bone and chest, not against the neck or face.
- ◆ A safety belt spreads the force of a collision over the strongest parts of your body – your hips and shoulders.



1/50 of a second after the car has stopped, the unbelted person slams into the dashboard or windshield. This is called the human collision.

- ◆ During a collision or sudden stop, an internal device locks the safety belt in place, keeping you in position, conscious, and able to control the vehicle.
- ◆ Eliminate risks of injury from air bag deployment by buckling your safety belt and keeping a distance of about 10 inches between your chest and the air bag compartment.



With effective safety belts, the person will slow down as the front of the vehicle crashes. In most instances, the person will stop before his or her head or chest hits the steering wheel, dash or windshield.

Buckle the safer way, low and tight across your hips.

THE LAW

- ◆ All front seat occupants must buckle up.
- ◆ All children between 7 and 16 years of age, in the front and back seat, must buckle up.
- ◆ All children under 7 years of age must be buckled into a Federally-approved child car safety seat.

Drivers can be fined and receive driver license penalty points if they or other passengers under age 16 are not properly restrained.

CHILD PASSENGER SAFETY

Why use car safety seats?

- ◆ Motor vehicle crashes are the leading cause of death to young children.
- ◆ When used correctly, child car safety seats reduce the likelihood of serious injury or death by up to 70%.
- ◆ Never place a rear-facing child car safety seat in the front seat if there is a passenger-side air bag.
- ◆ The center of the back seat is the safest place to install a car safety seat.

Choose only seats that meet Federal standards. Read manufacturer's instructions carefully.

4 Steps for Child Passenger Safety

1. REAR-FACING INFANT SEATS in the back seat from birth to at least one year old and at least 20 pounds
2. FORWARD-FACING TODDLER SEATS in the back seat from age one to about age four and 20 to 40 pounds
3. BOOSTER SEATS in the back seat from about age four and 40 pounds to at least age eight and 4'9" tall
4. SAFETY BELTS at age eight or older and taller than 4'9". All children age 12 and under should ride in the back seat.

Is your car seat installed correctly? To find a car seat inspection station in New York City near you, call 311