



Third Ave, East 163 St – St Ann's Ave

School Safety Improvements

Presentation for CB 3 | September 16, 2019



Third Ave (E 163 St – St Ann’s Ave)

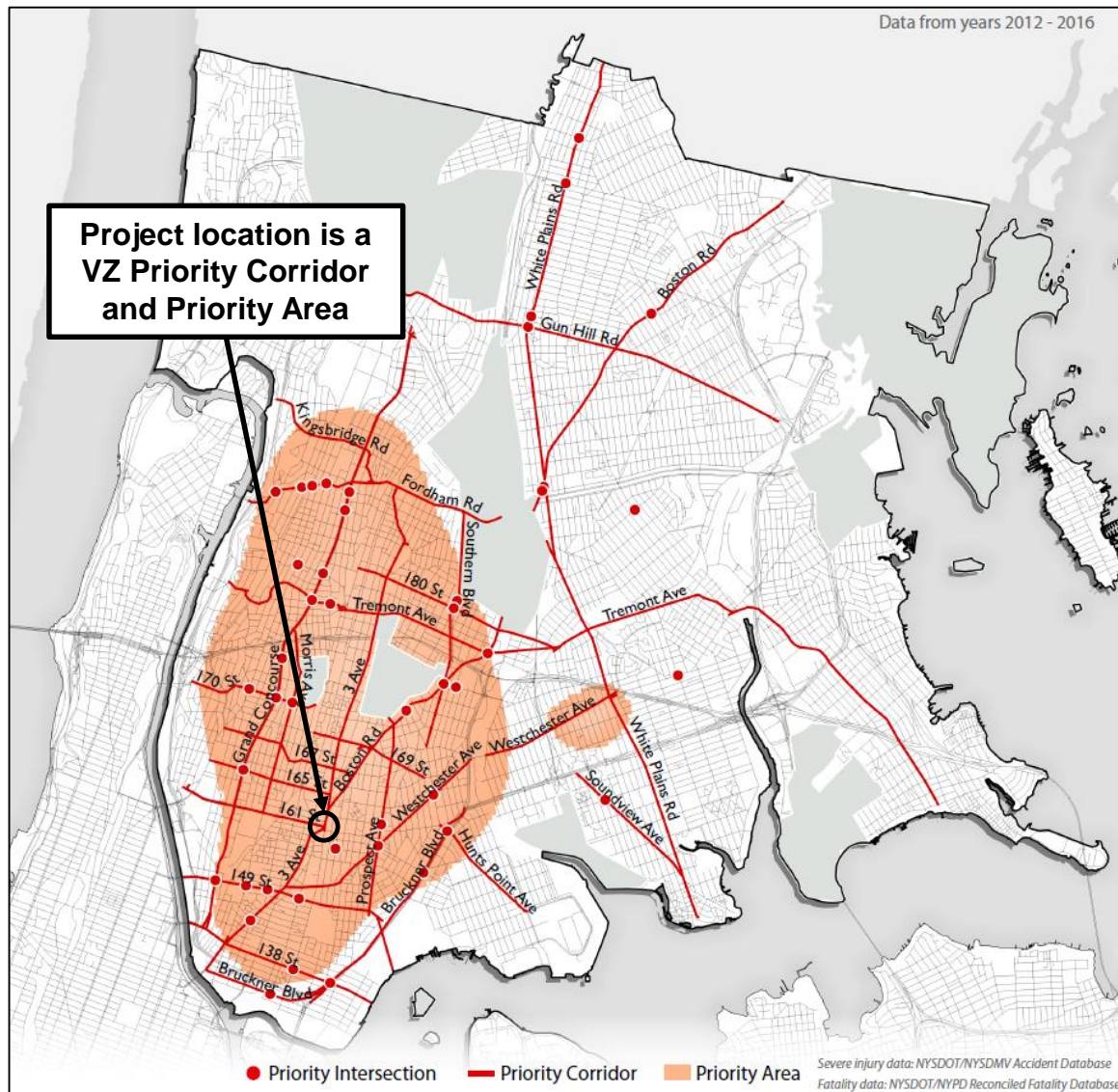
Vision Zero Priority

Vision Zero

- Multi-agency effort to reduce traffic fatalities in NYC
- Borough Action Plans released in 2019
- Priority Intersections, Corridors, and Areas identified for each borough

Third Ave, E 163 St – St Ann’s Ave

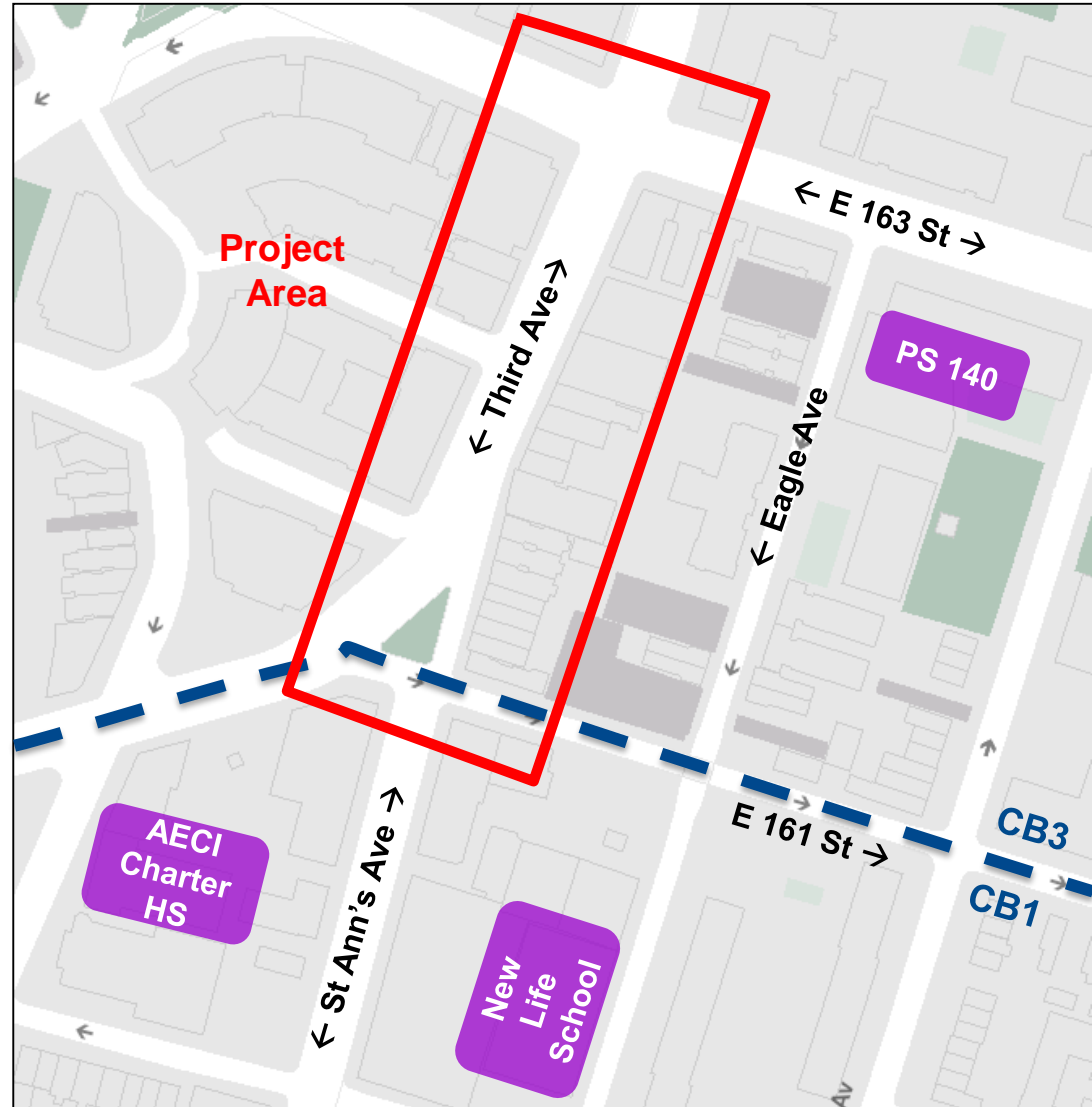
- Priority Corridor
- Priority Area



Third Ave (E 163 St – St Ann's Ave)

Project Location

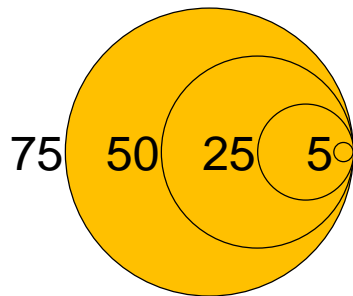
- Project area used by students accessing multiple schools
- Local truck route
- Bx15 and Bx21 bus route
- School safety improvements implemented on Third Ave, E Tremont Ave to E 163 St, 2017 –2018



Third Ave (E 163 St – St Ann’s Ave)

Safety Data

- 109 total injuries
- 2/3 severe injuries were pedestrians or bicyclists

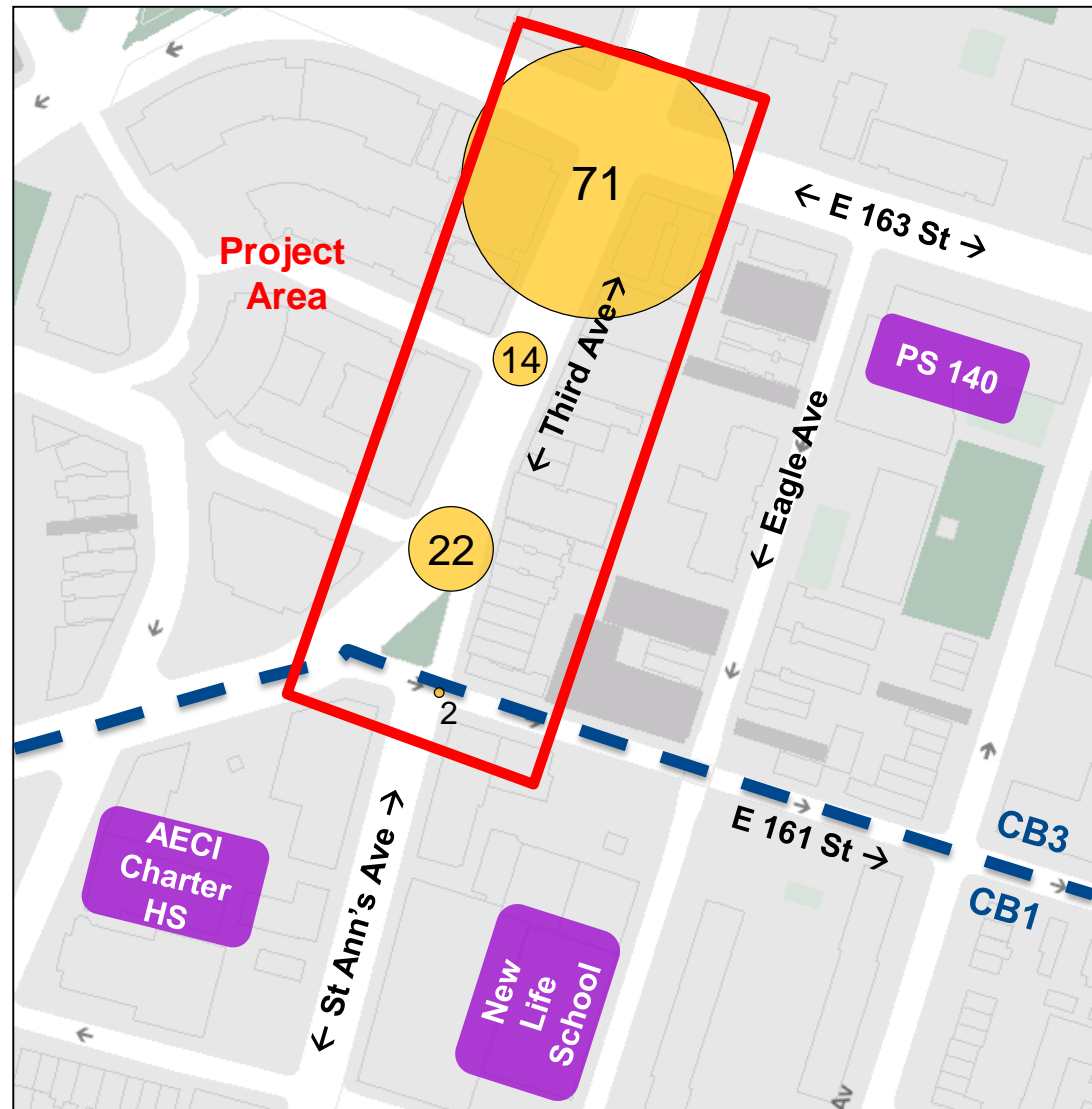


Injury Summary, 2013-2017 (5 Years)

	Total Injuries	Severe Injuries	Fatalities	KSI
Pedestrian	18	1	0	1
Bicyclist	11	1	0	1
Motor Vehicle Occupant	80	1	0	1
Total	109	3	0	3

Fatalities, 01/01/2013-8/18/2019 : None

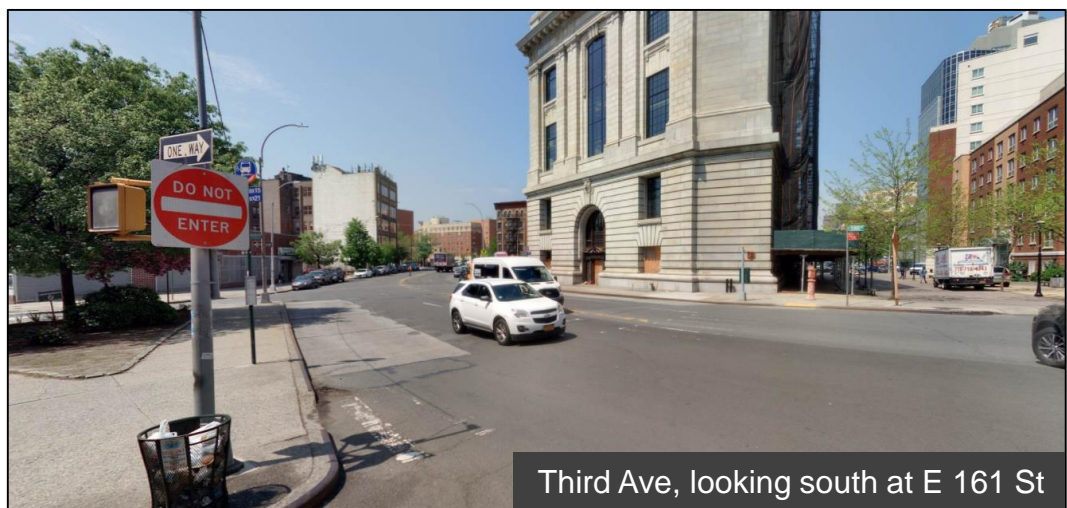
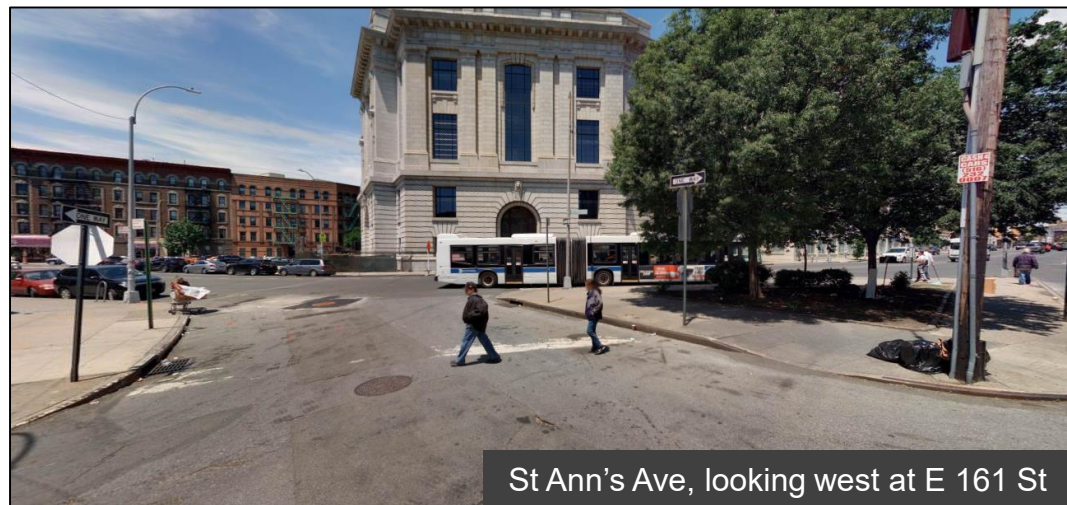
Source: Fatalities: NYCDOT
 Injuries: NYSDOT
 KSI: Persons Killed or Severely Injured



Third Ave (E 163 St – St Ann’s Ave)

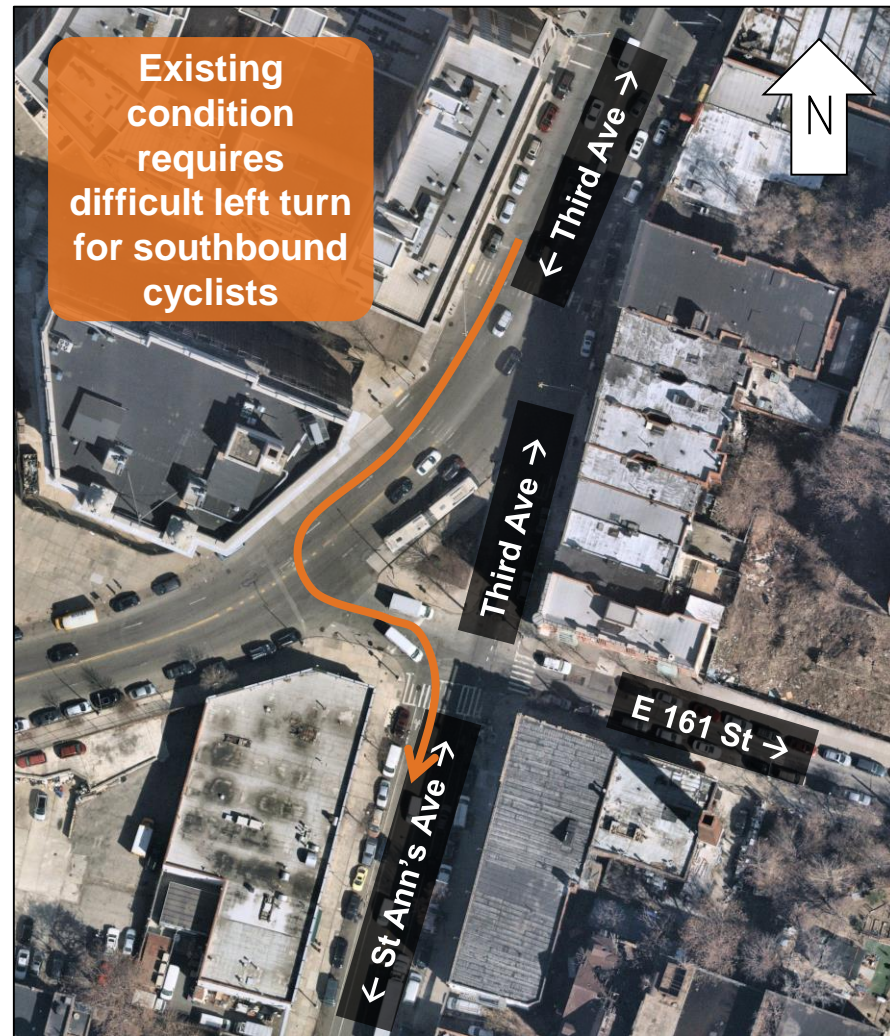
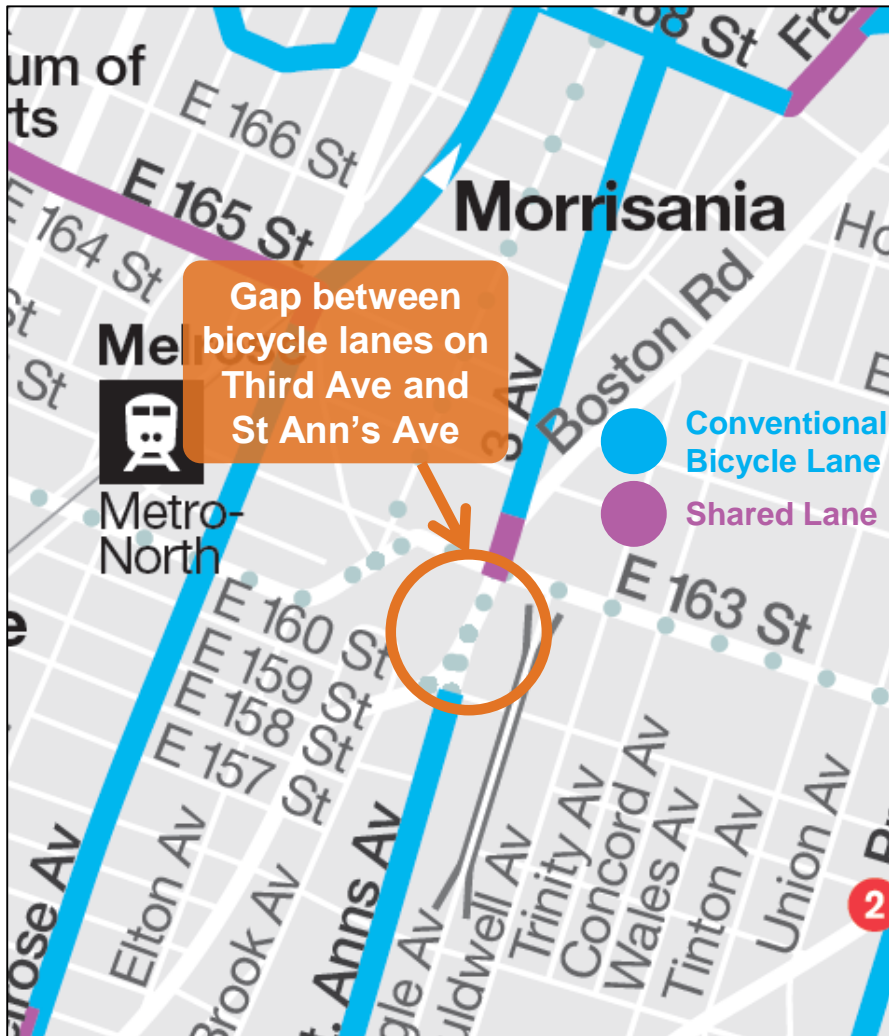
Existing Conditions: Long Pedestrian Crossings

- Long pedestrian crossings on Third Ave and E 161 St



Third Ave (E 163 St – St Ann's Ave)

Existing Conditions: Gap in Bicycle Network



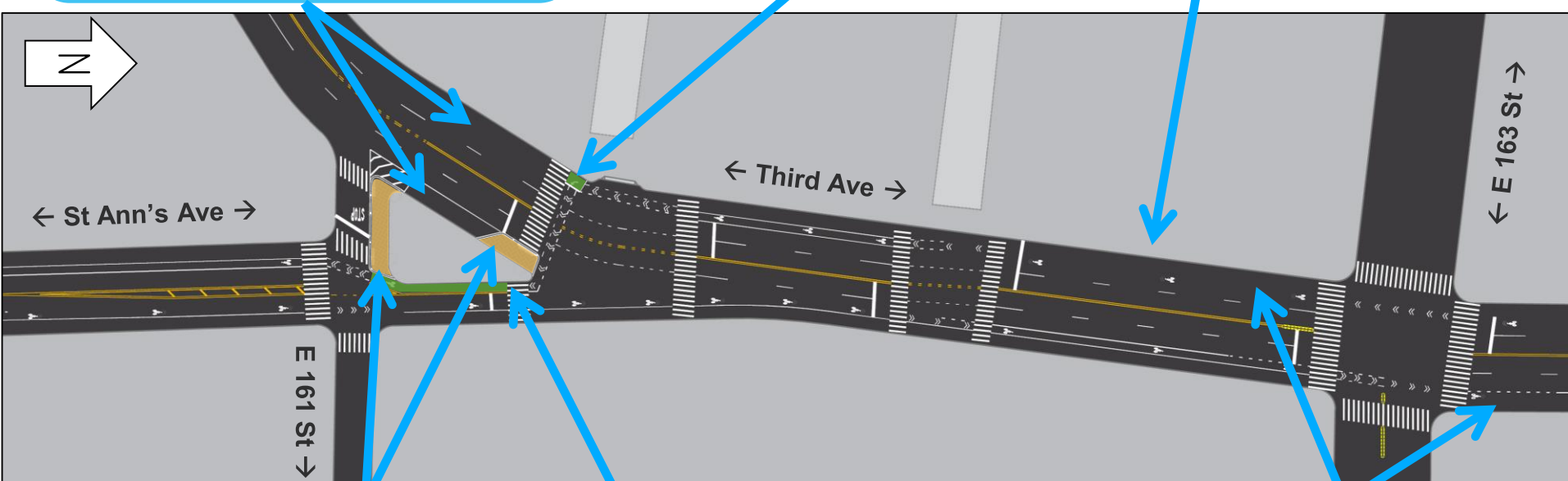
Third Ave (E 163 St – St Ann's Ave)

Proposal: Shorter Pedestrian Crossings and Bicycle Lane Connection

Remove northbound and southbound Bx15/Bx21 bus stops at E 161 St as part of Bronx Bus Network Redesign. Potential to add ASP parking spaces

Install turn queue box for bicyclists to cross Third Ave with pedestrian signal

Add standard bike lanes and shared lanes



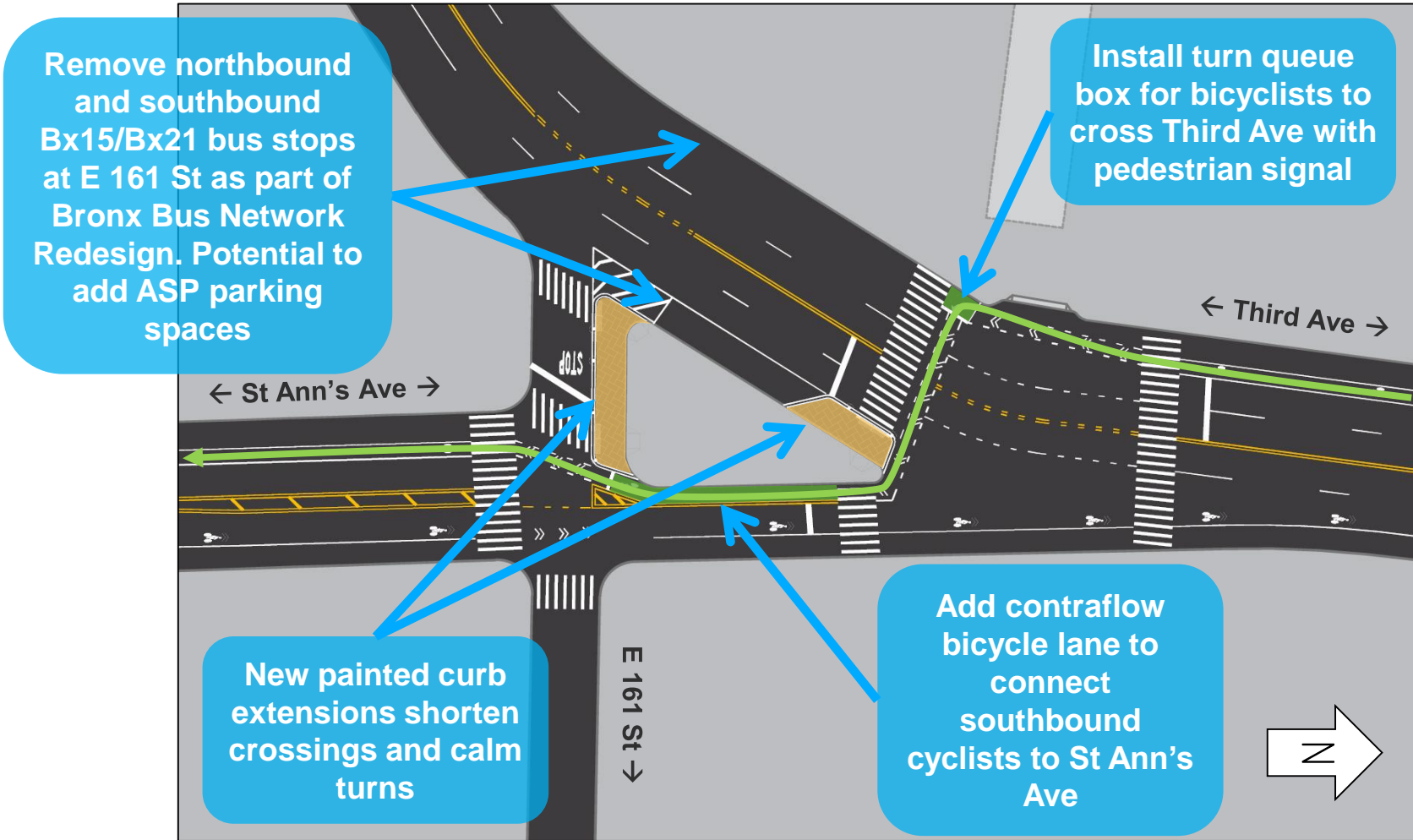
New painted curb extensions shorten crossings and calm turns

Add contraflow bicycle lane to connect southbound cyclists to St Ann's Ave

Existing Bx15 and Bx21 bus stops at E 163 St to remain

Third Ave & St Ann's Ave

Proposal Detail: Bicycle Lane Connection



Thank You!

Questions?

Contact: NYCDOT Bronx Borough Commissioner's Office – (212) 748-6680



NYCDOT



nyc_dot



nyc_dot



NYCDOT