

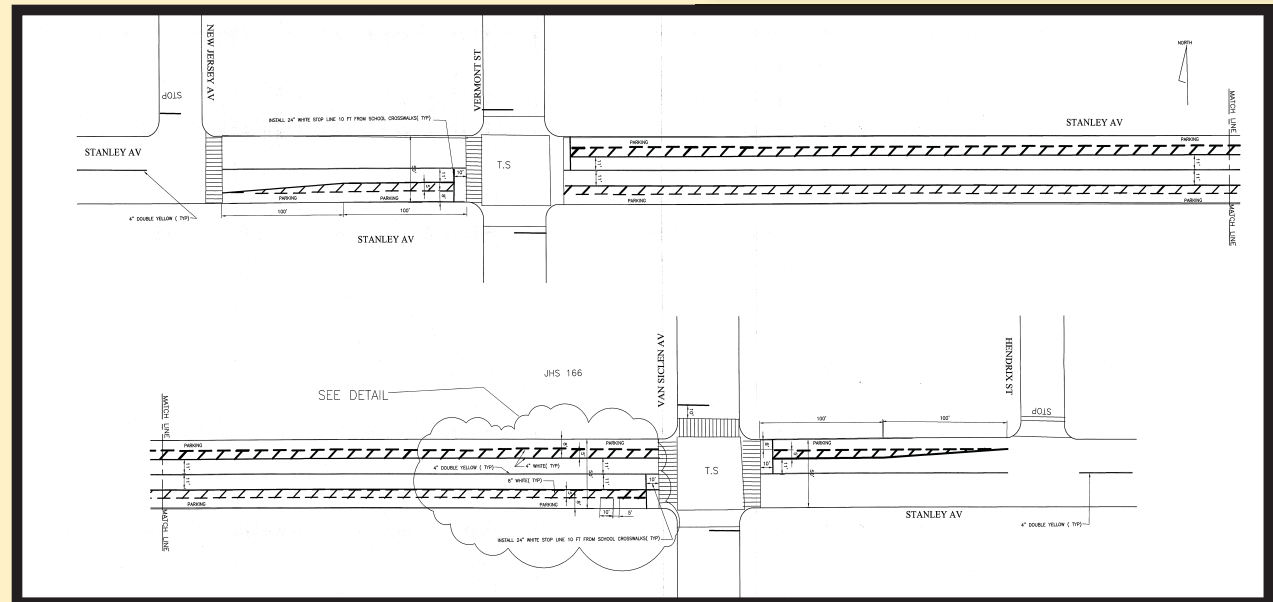
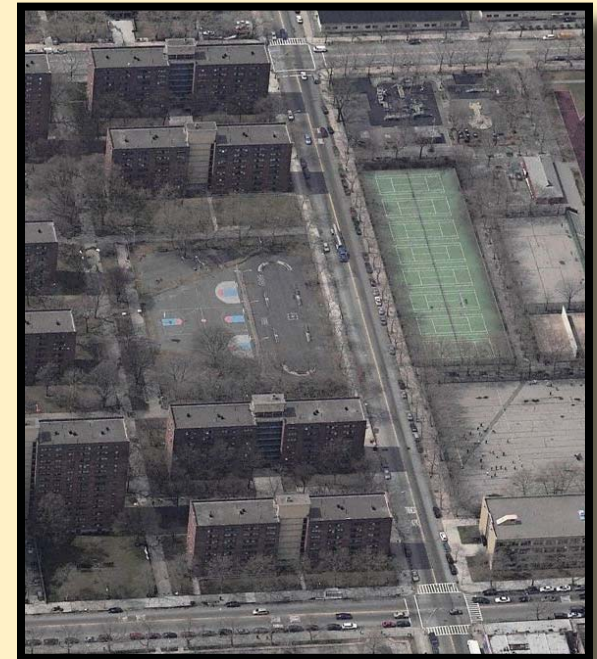
# Stanley Avenue

*July 2007*

Stanley Avenue is a wide two-way street in southeastern Brooklyn that runs parallel to Linden Boulevard. West of Pennsylvania Avenue, Stanley Avenue is primarily commercial and industrial, while the corridor to the east is primarily residential. At the request of the Community Board, the Department investigated concerns about speeding in proximity to a community park and school located on Stanley Avenue between Vermont and Van Siclen Avenue. This stretch is characterized by the presence of a park, school and a public housing development

Building upon the success of treatments instituted on similar streets citywide, the Department developed a plan to narrow the roadway to one travel lane in each direction. This was accomplished through the channelization of the roadway with a five foot buffer lane adjacent to an 8' parking lane. 11' travel lanes are provided in each direction. In addition, stop bars were installed in advance of the school crosswalks to further protect pedestrians at these crossings. These treatments should improve safety and lower speeds along this corridor.

This project will be implemented in July 2007.



Top: Aerial view of Stanley Avenue with housing development to the left and parks/school on the right.  
Bottom: Detailed plan of roadway narrowing and improved crossings.