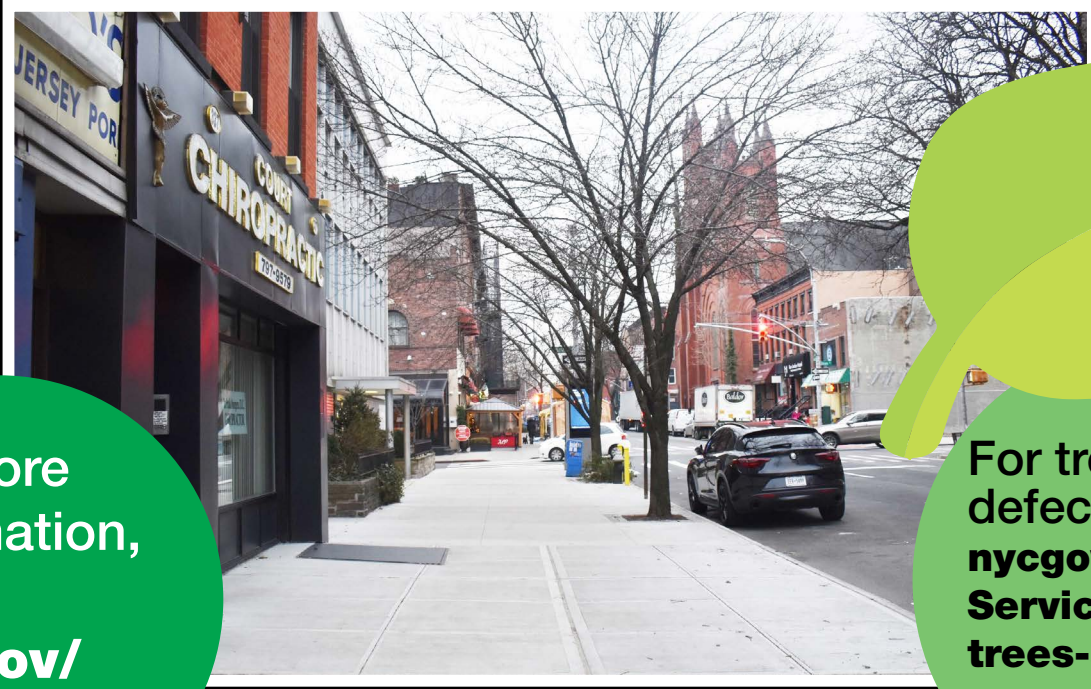


# How to Dismiss your Sidewalk Violation

NYC DOT Sidewalk Repair Specifications Must Be Followed



For more information, visit: [nyc.gov/sidewalks](http://nyc.gov/sidewalks)

For tree-related defects, visit: [nycgovparks.org/Services/forestry/trees-sidewalks-program](http://nycgovparks.org/Services/forestry/trees-sidewalks-program)

## Sidewalk Dismissal Inspection Checklist

- Sidewalk Permit has been obtained
- Sidewalk defects have been removed
- Expansion Joints have been installed, sealed and are level with the sidewalk
  - At a minimum of every 20 linear feet
  - At each property line
  - Where the curb meets the sidewalk
  - Expansion joints shall be placed between concrete of different thicknesses
- If repairing pedestrian ramps, install detectible warning surfaces (truncated domes)
- The entire sidewalk is visible for the dismissal inspection
- The dismissal inspection has been scheduled by calling 311 and providing
  - Permit number
  - Property Address
  - Block and Lot
  - Notice of Violation number
  - Email address/Contact information

