



# Rockaway Blvd

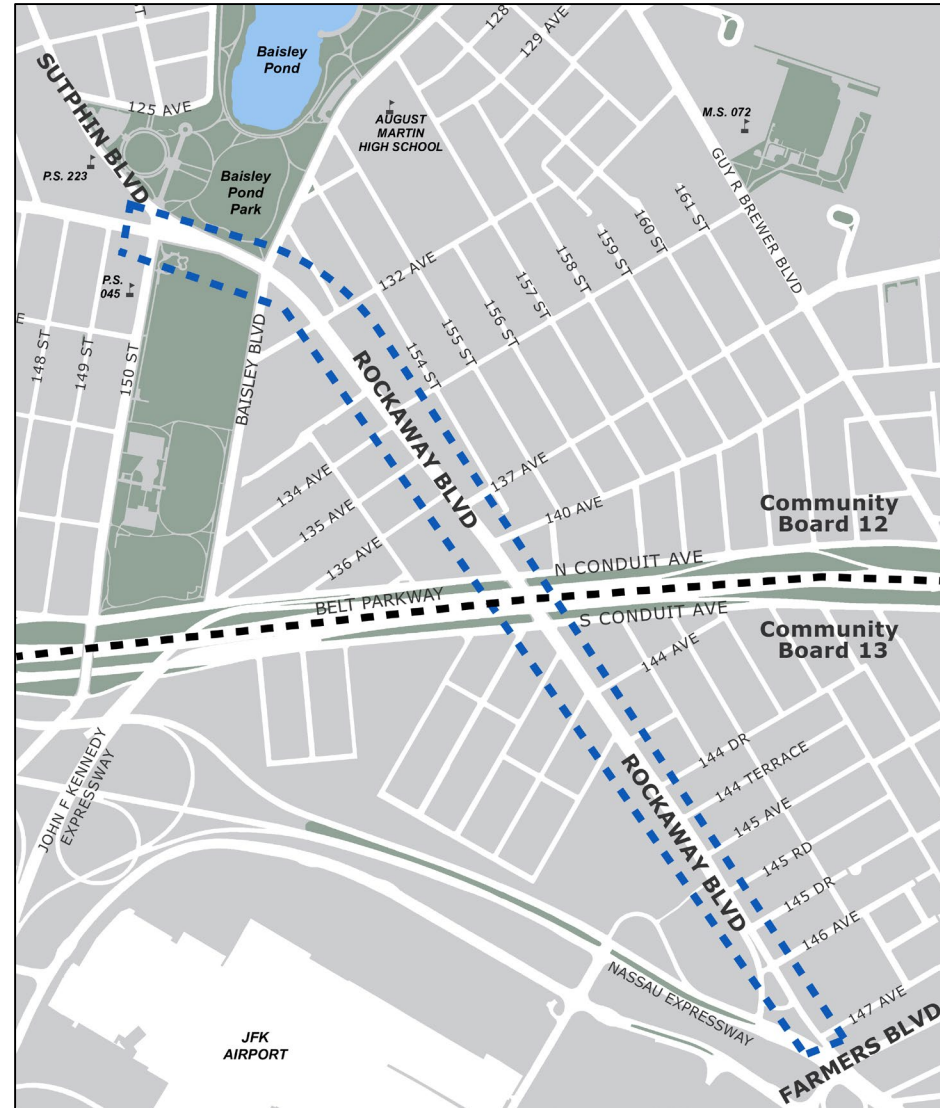
---

Community Board 13 Transportation Committee

January 16, 2020

# Background

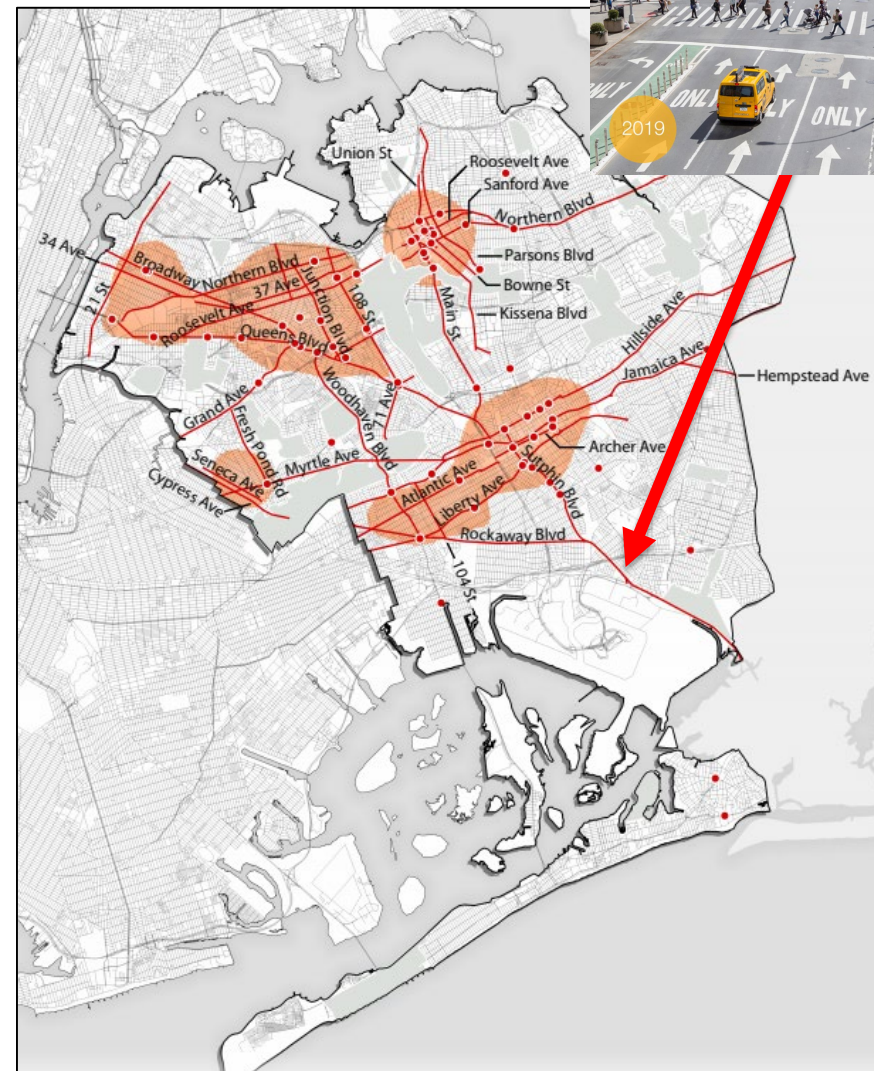
- 1.25 mile stretch between Sutphin Blvd and Farmers Blvd
- Direct access to JFK Airport cargo area
- Two schools and Baisley Pond Park on the western end of the corridor
- Industrial corridor – designated truck route with heavy truck volumes, wide streets, fast speeds
- Divided between Community Board 12 and Community Board 13 at the Belt Parkway



# Safety Data

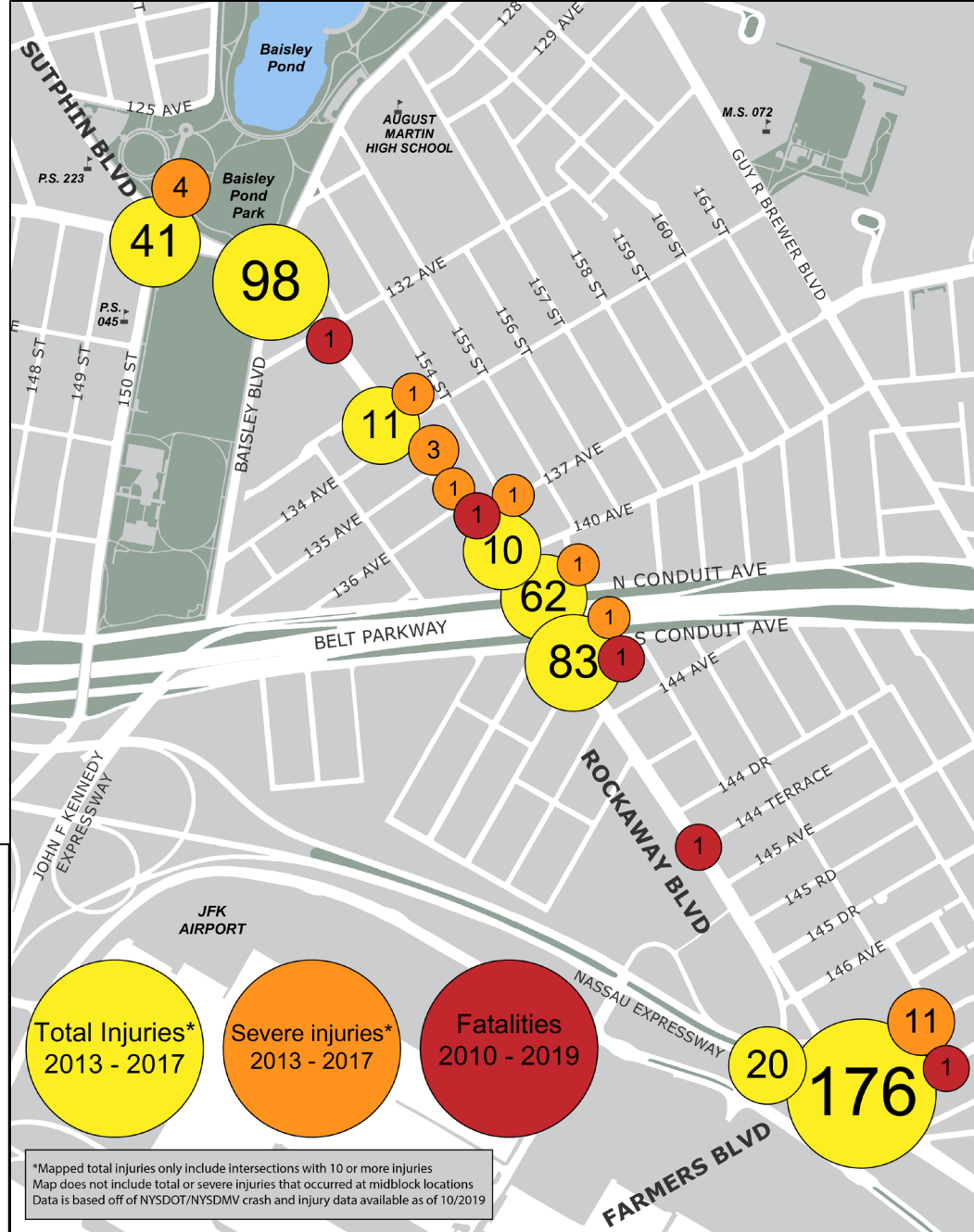
## Vision Zero

- Rockaway Blvd is a Vision Zero Priority Corridor
- Rockaway Blvd had a 21% increase in pedestrian KSI per mile between 2009 – 2013 and 2012 - 2016
- High speeds – maximum recorded velocity of 51 MPH (at 144<sup>th</sup> Terrace)



# Crash Data

- 5 pedestrian fatalities on the corridor since 2013
- High rate of rear end crashes – indicative of speeding
- More than a third of pedestrians injured while crossing in crosswalks with signal



Rockaway Blvd - Sutphin Blvd to Farmers Blvd, QN  
 Injury Summary, 2013-2017 (5 Years)

	Total Injuries	Severe Injuries	Fatalities	KSI
Pedestrian	31	5	5	10
Bicyclist	3	0	0	0
Motor Vehicle Occupant	541	18	0	18
<b>Total</b>	<b>575</b>	<b>23</b>	<b>5</b>	<b>28</b>

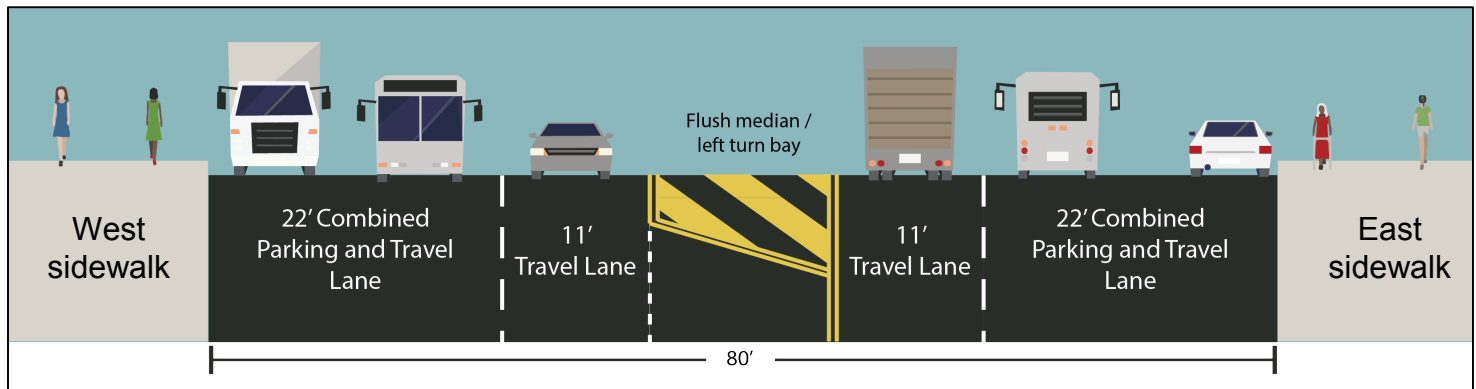
Fatalities, 01/01/2013-7/22/2019: **5**

Source: Fatalities: NYCDOT  
 Injuries: NYSDOT  
 KSI: Persons Killed or Severely Injured

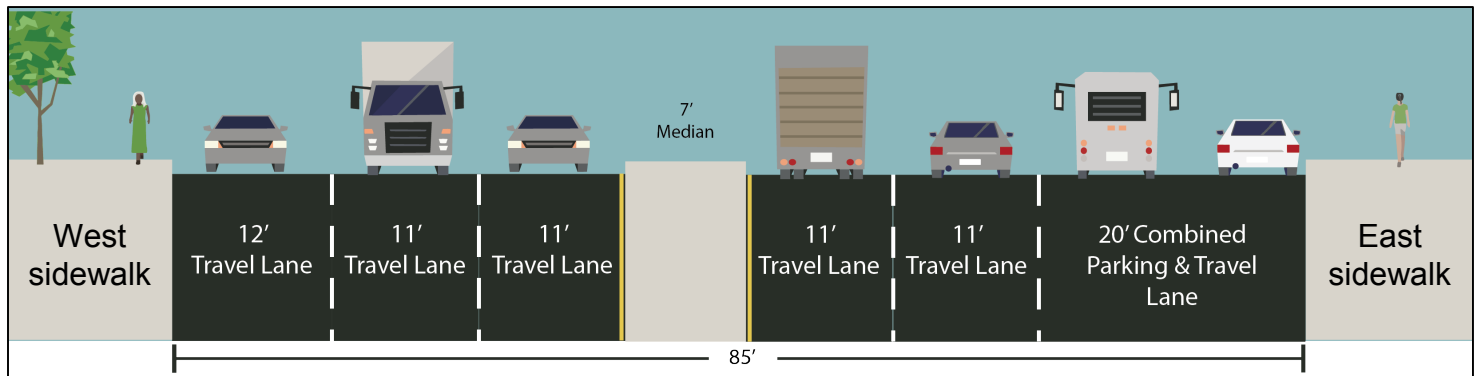
# Existing Conditions

- Rockaway Blvd is an 80' to 90' wide corridor with two to three moving lanes in each direction
- Q6 bus runs on Rockaway Blvd
- High quantities of trucks due to JFK Airport and Industrial District

Existing Conditions:  
S Conduit Ave to  
144<sup>th</sup> Rd



Existing Conditions:  
144<sup>th</sup> Rd to  
Farmers Blvd



# Existing Conditions - Corridor

---

## Corridor Conditions – 144<sup>th</sup> Road to Farmers Blvd

- Wide street with excess vehicular capacity leads to frequent speeding
- Substandard pedestrian facilities – few crosswalks, long crossings, and missing sidewalks
- Right lane of southeast bound Rockaway Blvd often used for truck storage in southern portion of the corridor



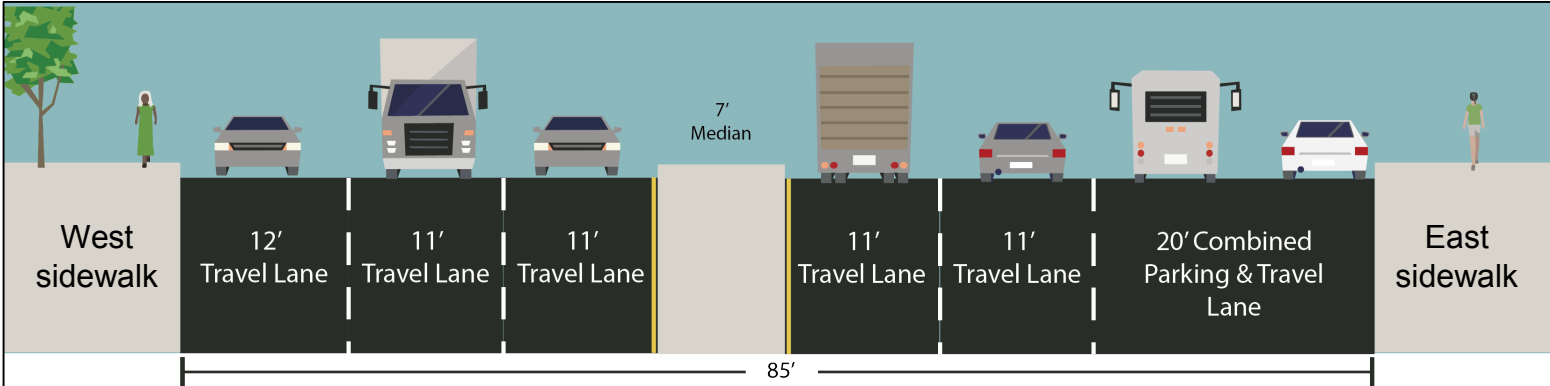
Rockaway Blvd looking southeast at 145<sup>th</sup> Road

# Proposed Improvements

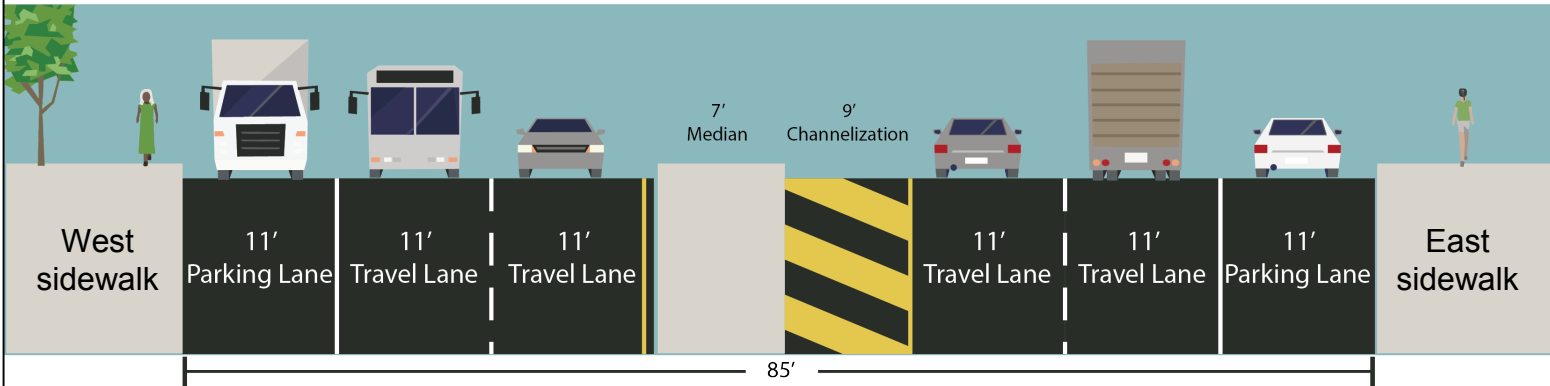
## Corridor

Proposed design will standardize Rockaway Blvd as two lanes in each direction at all times

Existing Conditions:  
144<sup>th</sup> Rd to  
Farmers Blvd

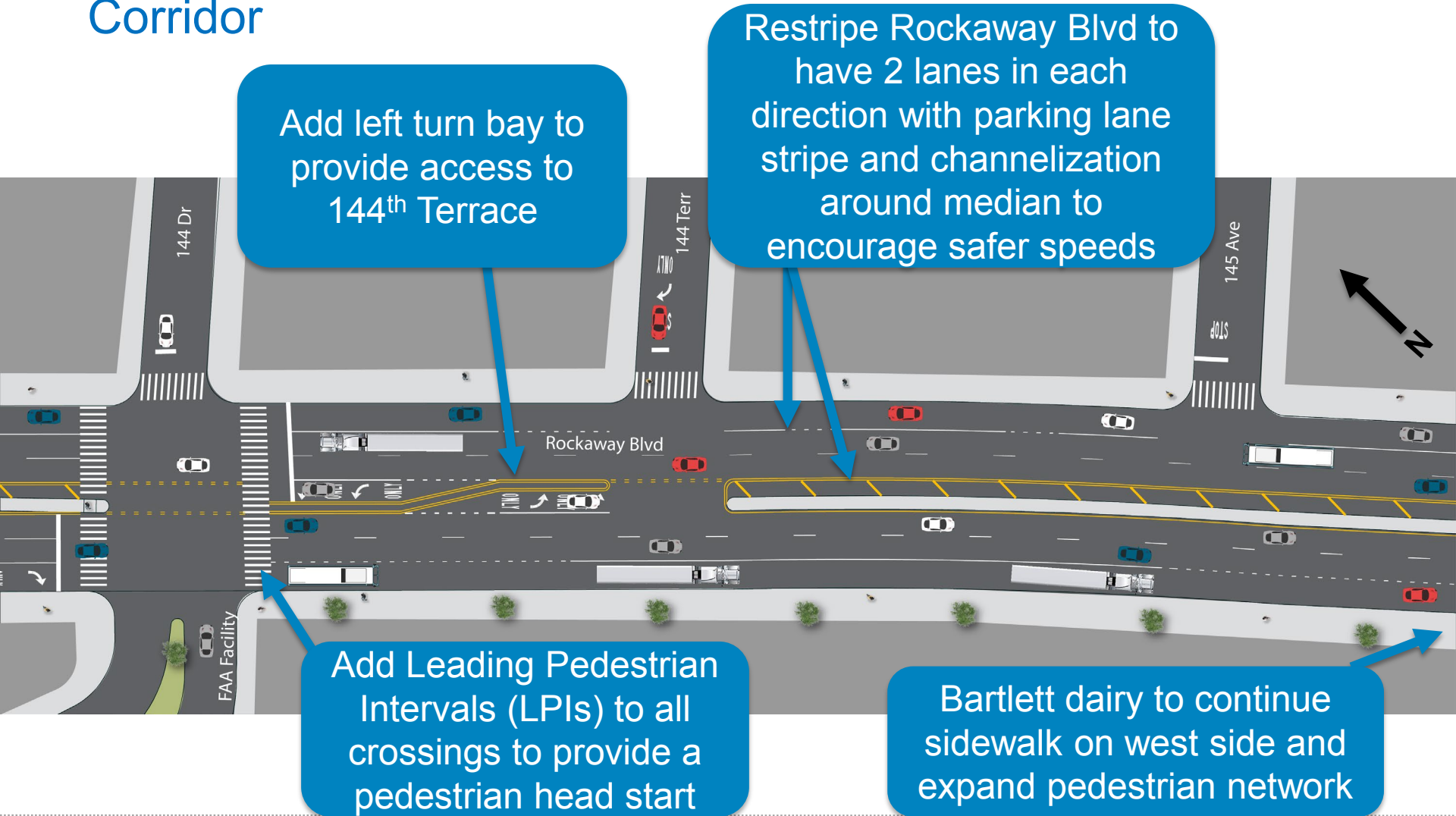


Proposed Conditions:  
144<sup>th</sup> Rd to  
Farmers Blvd



# Proposed Improvements

## Corridor





# Analysis of Lane Changes

---

- Peak recorded volume of 766 vehicles per hour (northbound AM rush hour between 145<sup>th</sup> Dr and 145<sup>th</sup> Rd)
- One lane has capacity to process up to 700 vehicles per hour
- Considerably lower off-peak volumes
- Signal timing adjustments to be made concurrently will allow for LPIs at all crossings south of the Conduit, better processing at S Conduit Ave, and safe progression of all vehicles
- **No predicted impacts to travel time on Rockaway Blvd**

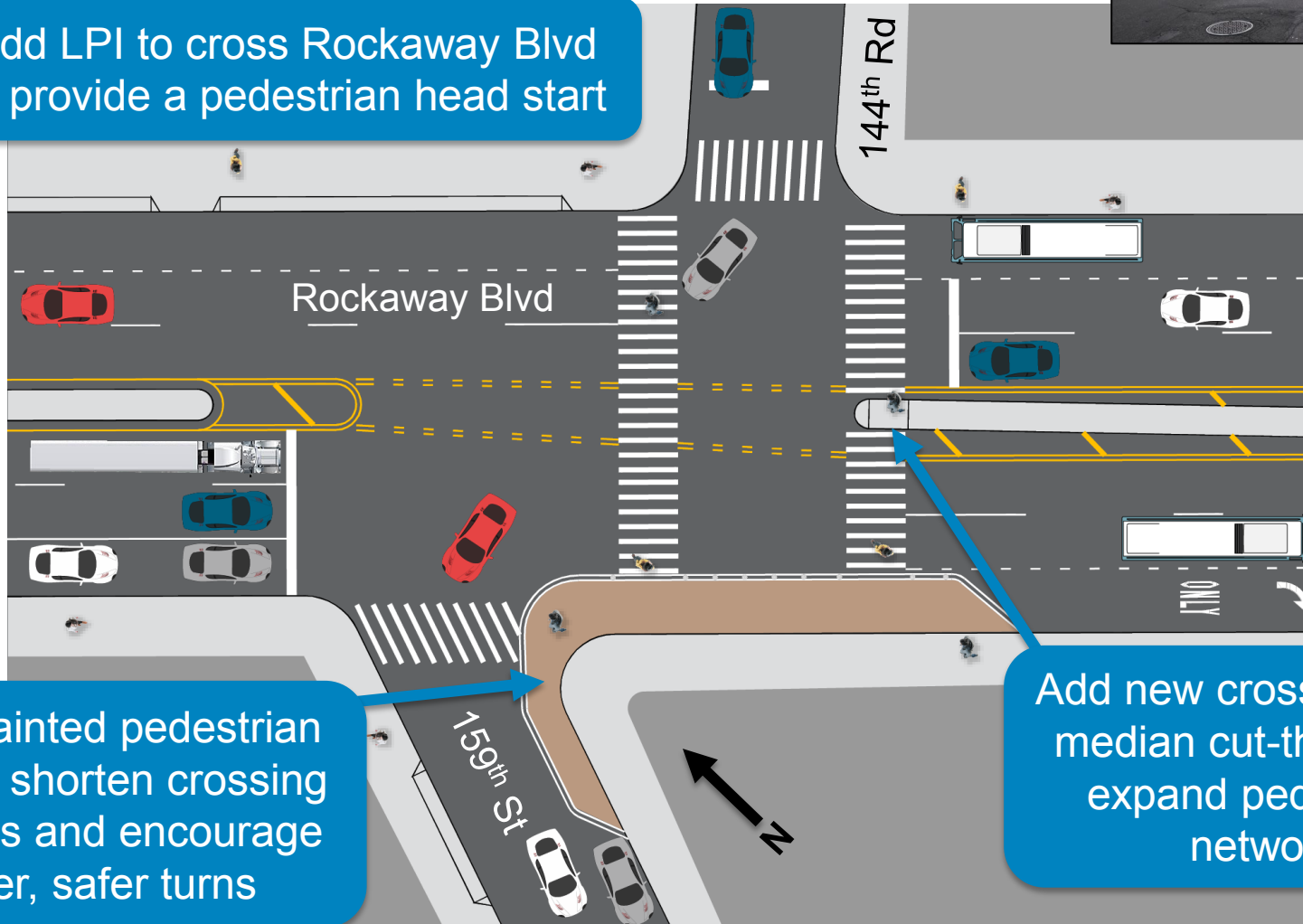


# Proposed Intersection Improvements

## 159<sup>th</sup> St/144<sup>th</sup> Rd



Add LPI to cross Rockaway Blvd to provide a pedestrian head start



Install painted pedestrian space to shorten crossing distances and encourage slower, safer turns

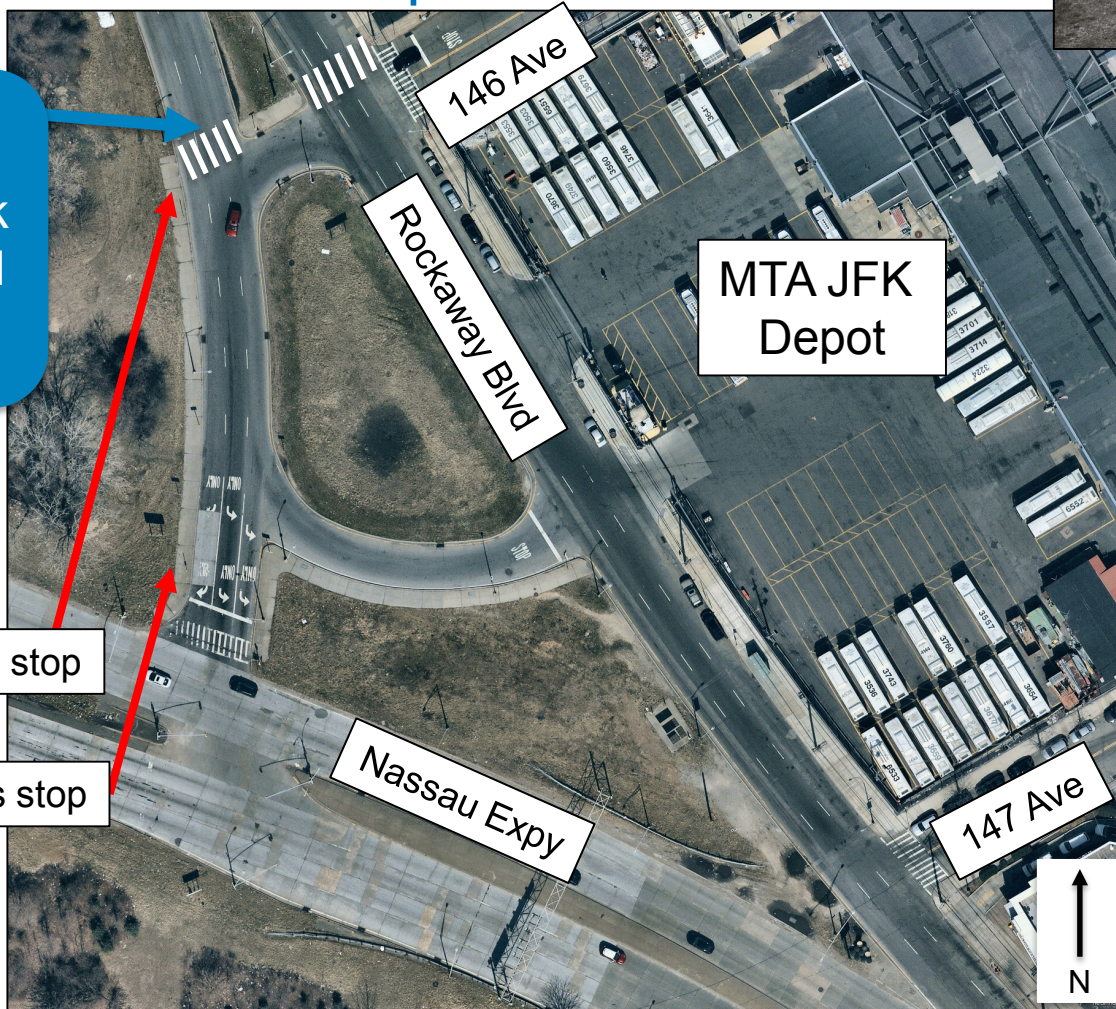
Add new crosswalk with median cut-through to expand pedestrian network

# Proposed Intersection Improvements

## 146 Ave and Q6 bus stop



Pedestrians cross Rockaway Blvd near 147<sup>th</sup> Ave



New signal and crosswalk to be installed at 146<sup>th</sup> Ave

Re-located Q6 bus stop

Existing Q6 bus stop

NYC DOT and MTA to relocate the southbound Q6 bus stop to 146<sup>th</sup> Ave. NYC DOT will provide a safe crossing across Rockaway Blvd at 146<sup>th</sup> Ave

# Additional Work

---

## NYS DOT, NYC DEP, Bartlett Dairy Plant Development

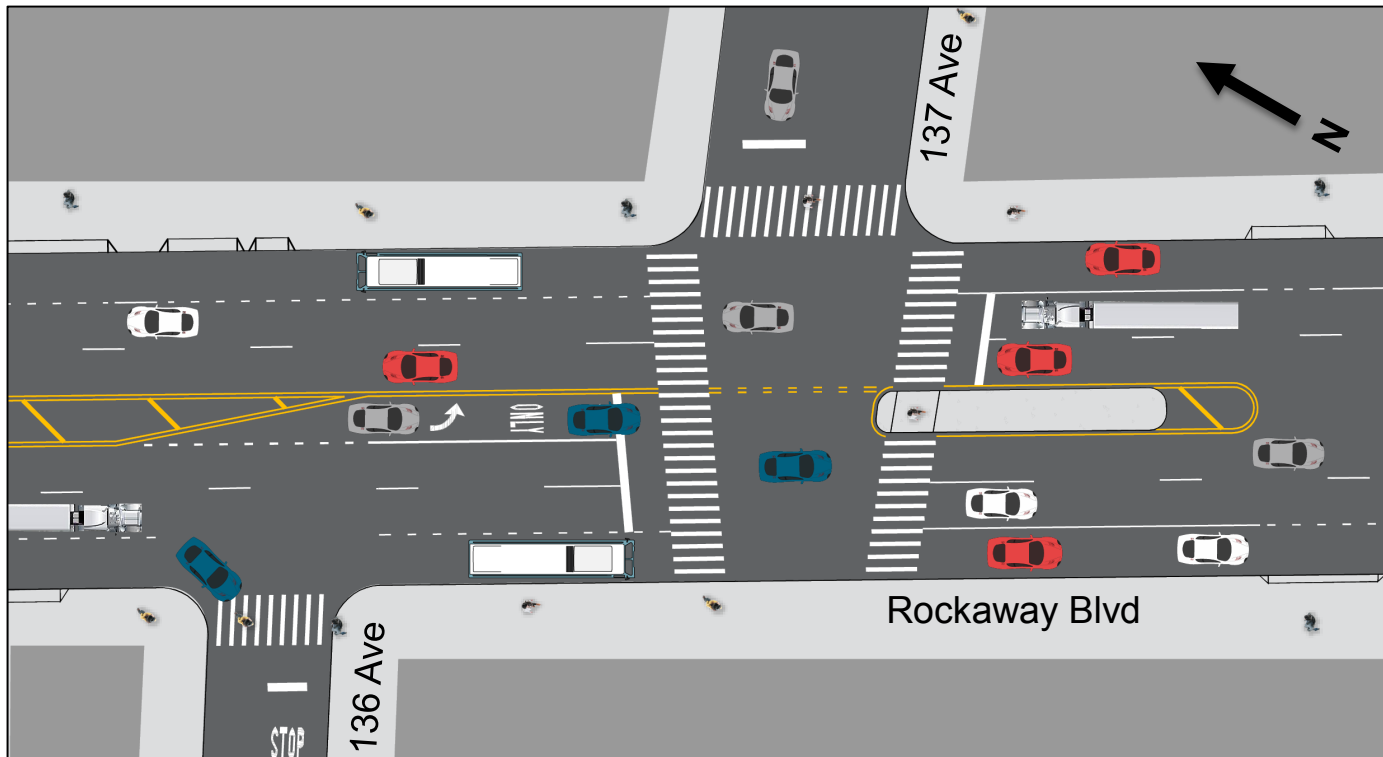


Pedestrians cross Rockaway Blvd at Farmers Blvd –  
NYS DOT will provide a crosswalk at this location

- NYSDOT Capital project
  - Planned capital project on Rockaway Blvd from Farmers Blvd to 3<sup>rd</sup> St includes substantial safety improvements at Farmers Blvd intersection
- NYC DEP Water main replacement
  - Upgrading of water main between S Conduit Ave and Farmers Blvd will allow for repaving of street
  - NYC DOT exploring incorporating additional safety improvements in capital project
- Bartlett Dairy Plant
  - Bartlett Dairy will construct missing sidewalk on southwest curb from 145<sup>th</sup> Rd to 146<sup>th</sup> Ave

# Community Board 12 Continuation of Project

- Construct pedestrian refuge islands at Sutphin Blvd, Baisley Blvd, and 137<sup>th</sup> Ave
- Construct concrete median tip at Rockaway Blvd and N Conduit Ave
- Ban northwest bound left turns onto Baisley Blvd and onto 136<sup>th</sup> Ave
- Add new crosswalk at 137<sup>th</sup> Ave



NYC DOT's proposal at 137<sup>th</sup> Ave in Community Board 12 – pedestrian refuge island and new crosswalk

# Project Benefits

---

## Safety Improvements

- Lane reduction encourages slower, safer speeds on Rockaway Blvd
- Markings plan provides two standard width lanes at all points on Rockaway Blvd
- Formalizes space for parking already occurring on the south curb
- New crosswalks and LPIs improve the pedestrian network on Rockaway Blvd
- Coordination with other agencies allows for substantial additional improvements



# Thank You!

Questions?



NYCDOT



nyc\_dot



nyc\_dot



NYCDOT