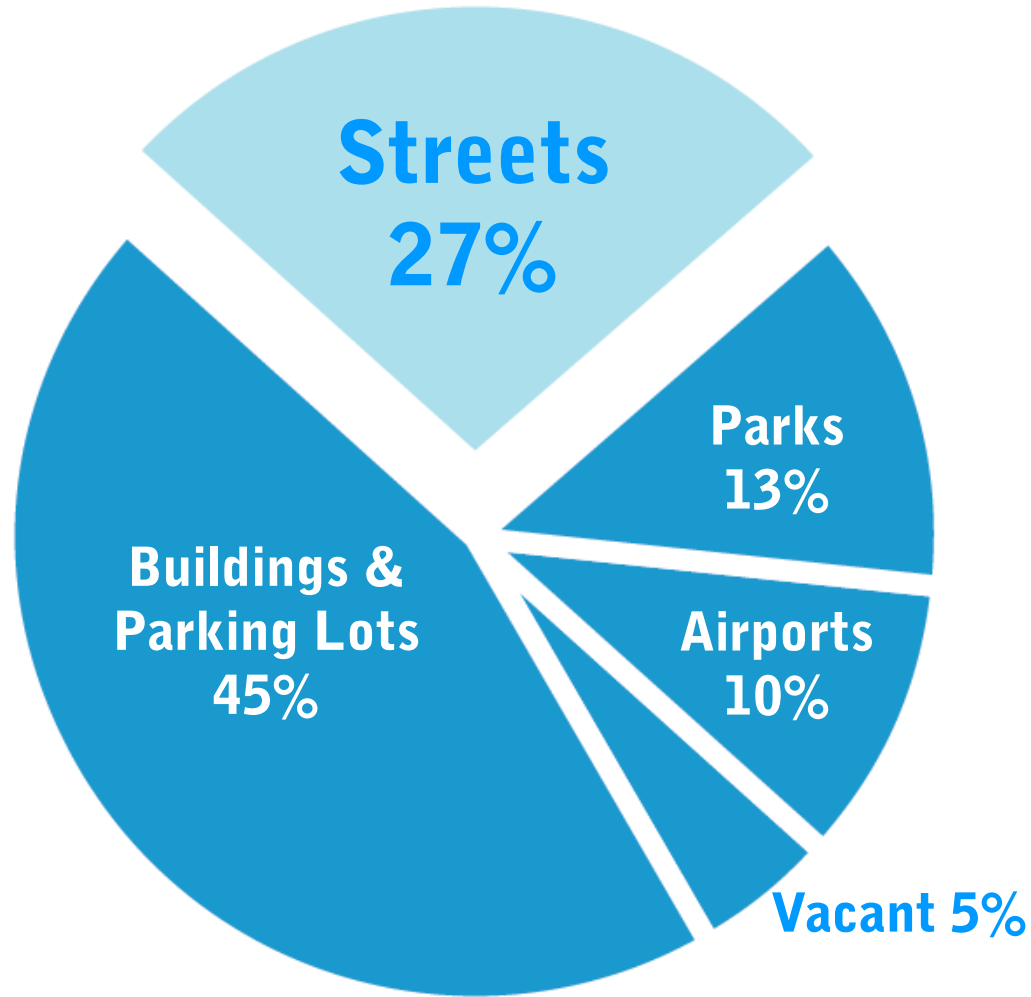


NYC Plaza Program

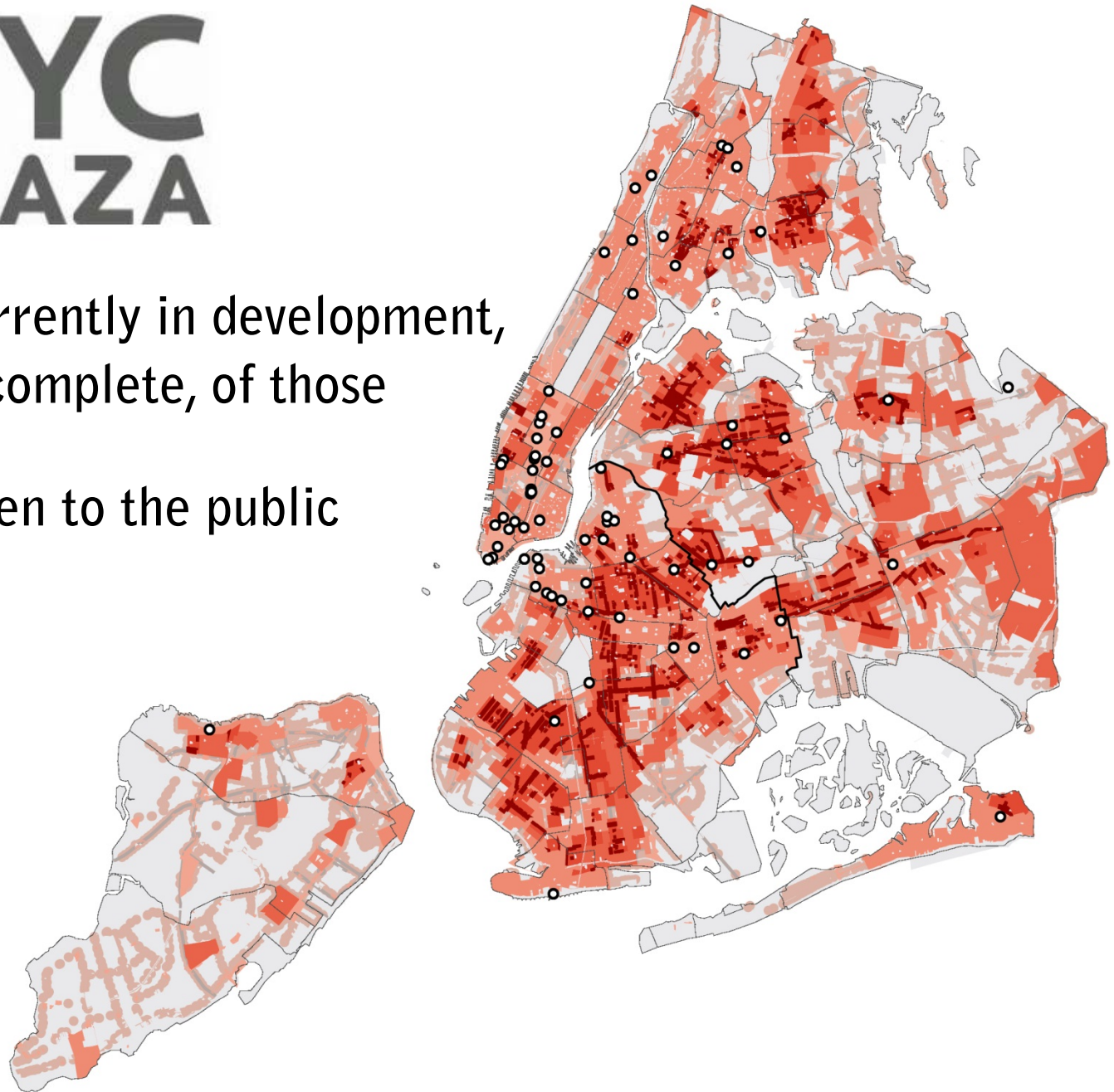
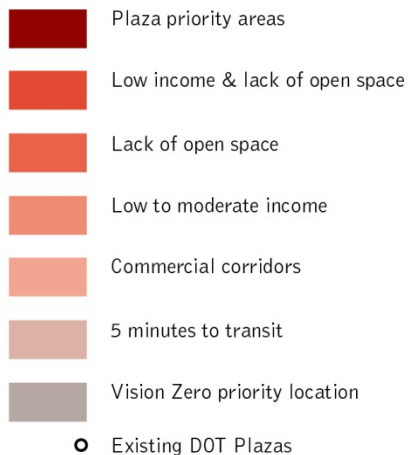


NYC Land Area by Use





71 Plazas currently in development,
construction, or complete, of those
49 Plazas open to the public



01

STATEN ISLAND
PLAZAS

0 OPEN

1 Capital Design



07 BRONX PLAZAS

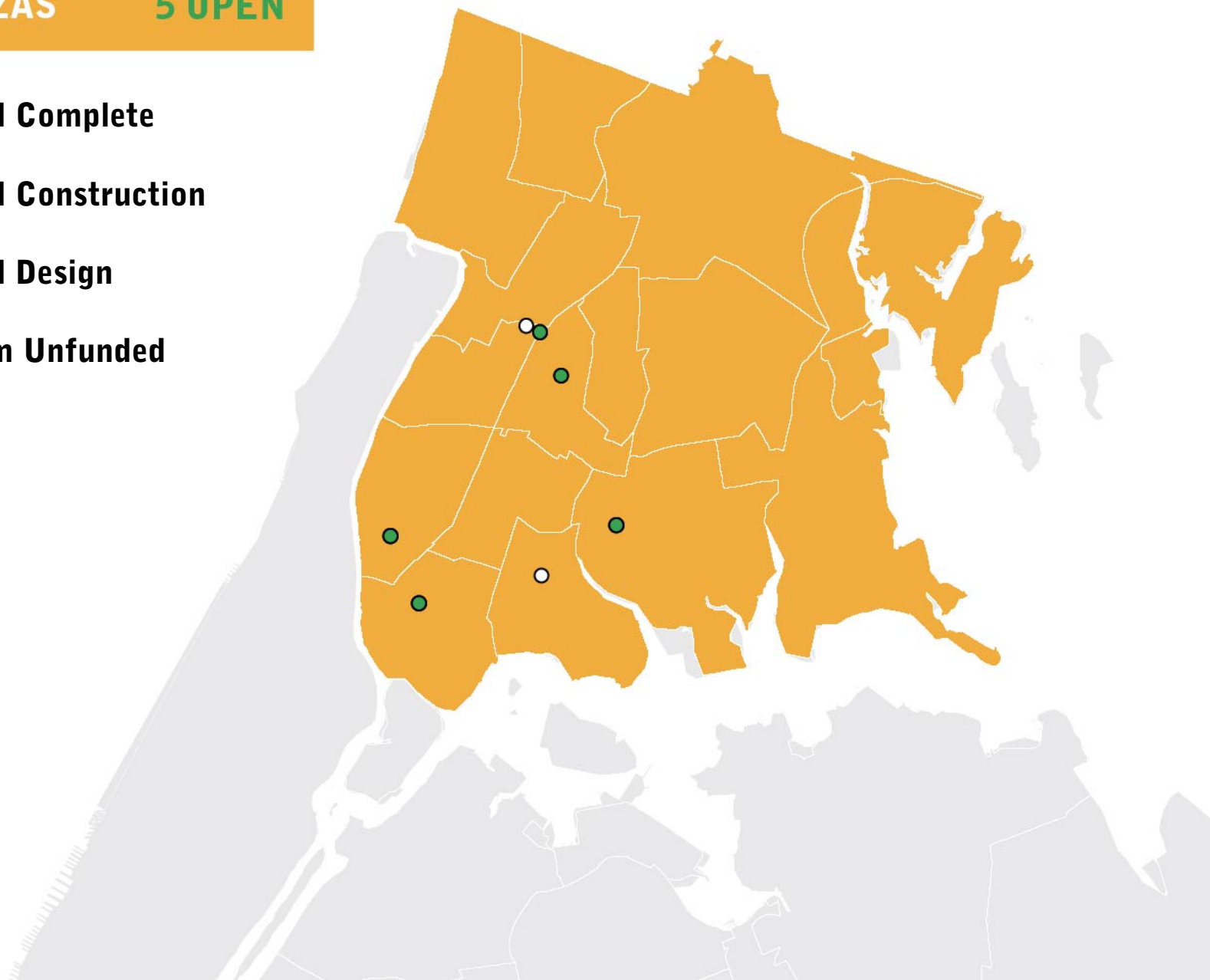
5 OPEN

2 Capital Complete

2 Capital Construction

2 Capital Design

1 Interim Unfunded



11

QUEENS
PLAZAS

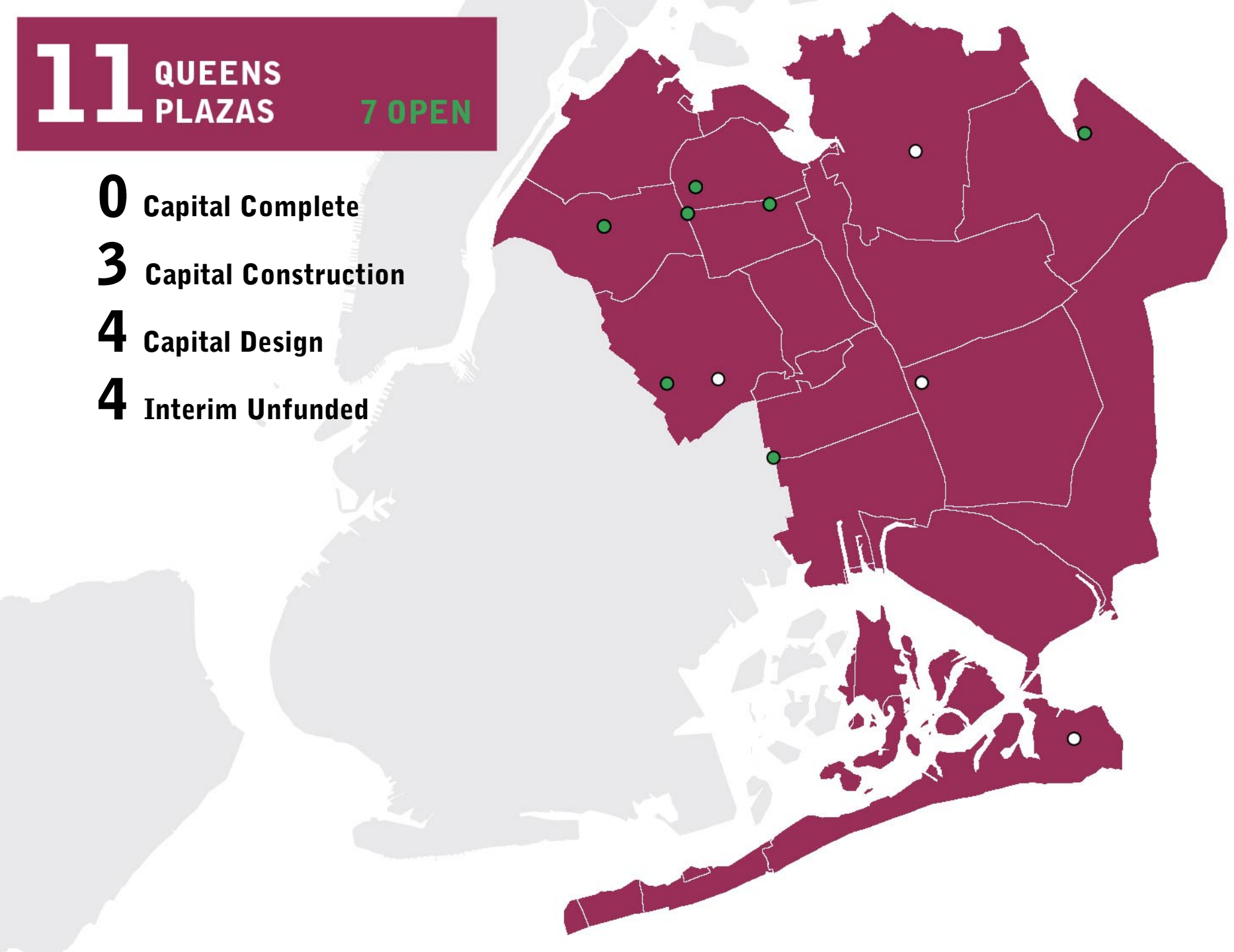
7 OPEN

0 Capital Complete

3 Capital Construction

4 Capital Design

4 Interim Unfunded



24 BROOKLYN PLAZAS

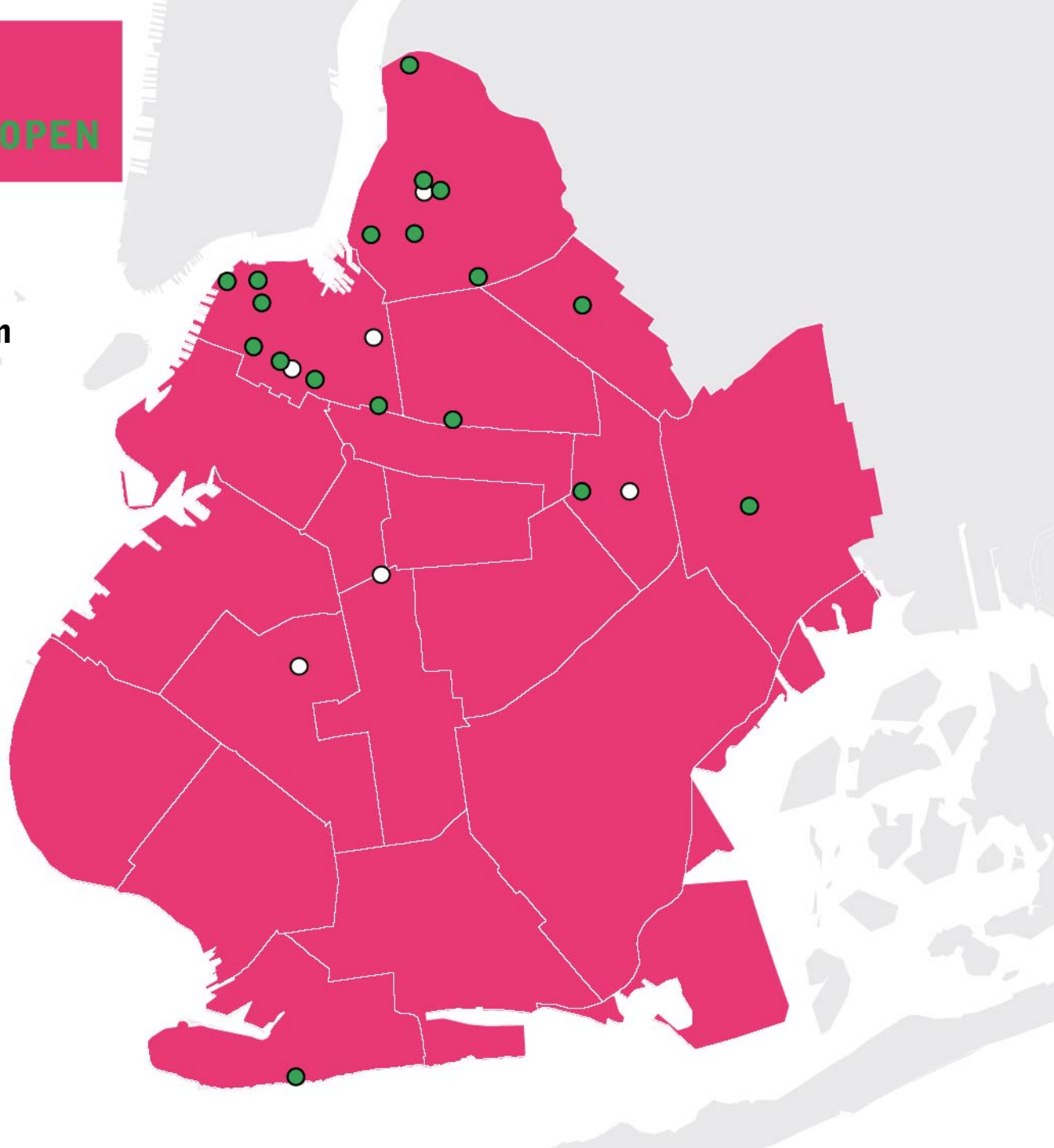
18 OPEN

9 Capital Complete

3 Capital Construction

6 Capital Design

6 Interim Unfunded



28 MANHATTAN PLAZAS

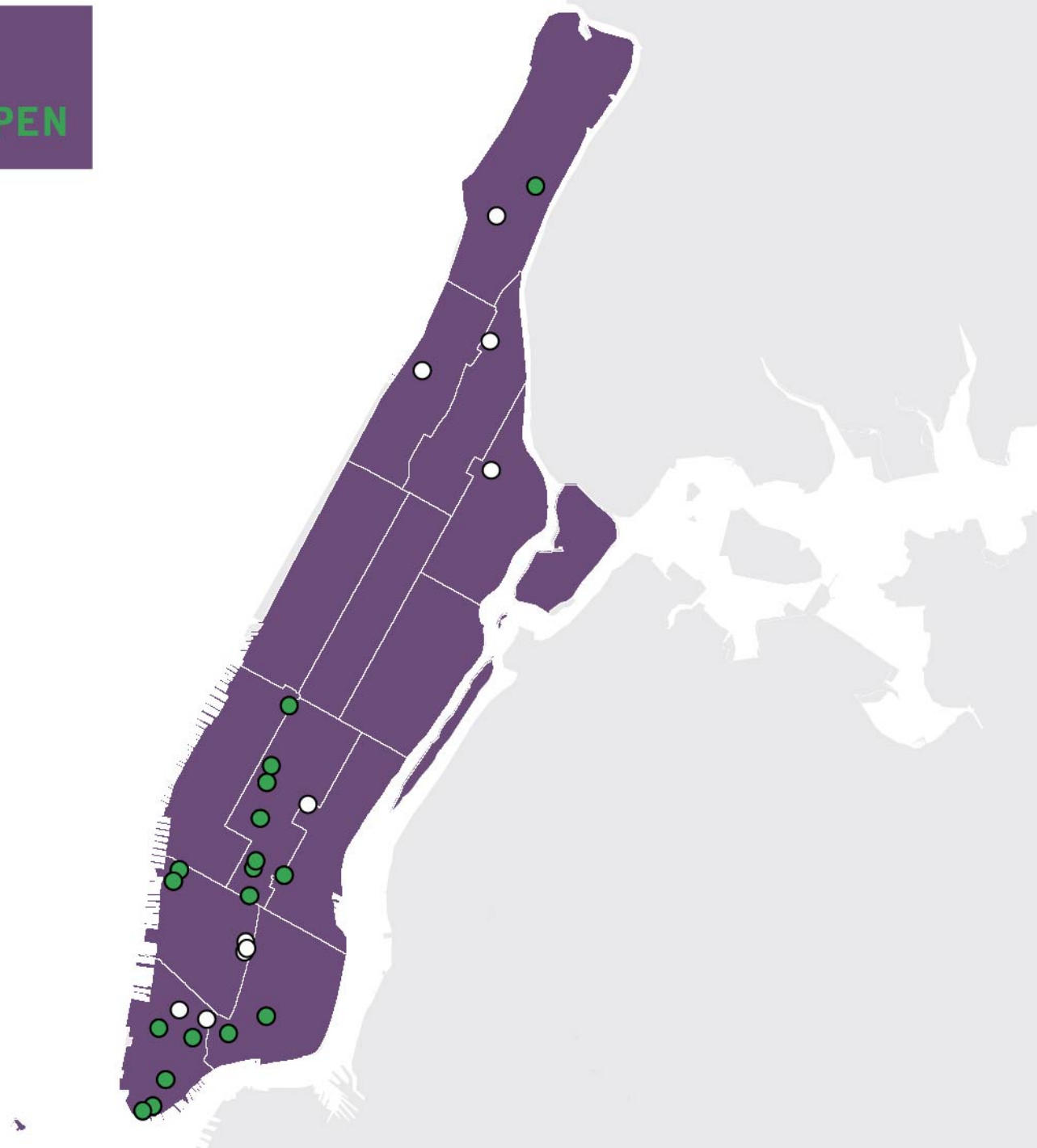
18 OPEN

2 Capital Complete

8 Capital Construction

10 Capital Design

8 Interim



Plazas: DOT's Definition



Willoughby Plaza, Brooklyn

Plazas vs. Parks



Flatiron Plaza adjacent to Madison Square Park. March 13, 2012

Plazas: What makes a good site?



Not-for-profit
groups request
plazas

So what's an
appropriate
site?

Where: Lack of Open Space/Low Income



Where: Community Partner



Where: Community Support



BROOKLYN PLAZA MEDICAL CENTER, INC.

FAMILY HEALTH SERVICES
Medicine
Dentistry
Podiatry
Pre-natal Care
Family Practice
Pediatrics
Obstetrics and Gynecology
HIV Services
Counseling/Behavioral Services
Nutrition

Mr. Vaidila Kungu
NYC Department
55 Water Street,
New York, NY

RE: Application

Dear Mr. Kungu

Brooklyn Plaza is
welcoming, pedestrian
friendly and Lafayette

An enlarged public
needed amenity for
transit and would

We look forward
welcome this corner
the quality of life

Thank you,
Tracy D. McDan
Tracy D. McDan
Director of Open

650 Fulton
Street



CITY OF NEW YORK
Community Board No. 2
350 JAY STREET - 8TH FL.
BROOKLYN, N.Y. 11201

MARTY MARKOWITZ
Borough President

June 30, 2010

Vaidila Kungu,
Office of Planning
Department of
55 Water Street
New York, New

Dear Mr. Kungu

Community Board
Alliance to the City

At its June 9, 2010
meeting, no action

Community Board
association's approval

Sincerely,
John Dew
John Dew

JD-RP

June 24, 2010

Mr. Vaidila Kungu
NYC Department
55 Water Street
New York, NY

Dear Mr. Kungu

I write to express
application to the

The FAB Alliance
the enlargement of
Fulton Street, from
Square will create
merchants, and
community gain

It is my understanding
proposal and have
the application
request of the
conducted; that
any potential
and that all plans
forward to a point

Sincerely,
Marty Markowitz
Marty Markowitz



Brooklyn
Academy
of
Music

Peter Jay Shop Building
30 Lafayette Avenue
Brooklyn, NY 11217-1466
Telephone: 718.636.4153
Fax: 718.636.4179
BAM.org

Keith Stubbins
Chief Financial Officer and



THE COUNCIL
OF THE CITY OF NEW YORK

COMMITTEE ON
COMMUNITY
DEVELOPMENT
AND
HUMAN SERVICES
SUBCOMMITTEE ON
COMMUNITY DEVELOPMENT
AND
HUMAN SERVICES

June 23, 2010

Mr. Vaidila
NYC Department
55 Water Street
New York, NY

RE: FGA
Dear Mr. Kungu

BAM's
Square
Fort Greene

Dear Mr. Kungu

I am writing
re: Enhancing Fowler Square - The Gateway to Fort Greene

Dear Mr. Kellogg:

For some time now the Fort Greene Association (FGA) has been fostering the concept that
Fowler Square is the Gateway to Fort Greene indeed it was the effort of the Fort Greene Association
which rehabilitated the statue and placed it in its current setting.

The patch of green which is Fowler Square needs to be expanded. Fowler Square forms
and oasis between the busy intersections of Lafayette Avenue and Fulton Street but because
of its diminutive size is often overwhelmed by the surrounding traffic and fails to create a
green buffer to the surrounding neighborhood of homes and shops. Expansion of the park
will allow for proper landscaping to ease the effect of traffic upon the neighborhood, an effect
which will certainly increase as Atlantic Yards takes shape.

As part of its ongoing effort to secure Fowler Square as the Gateway to Fort Greene, the
FGA has been pursuing multiple outlets one of which is the plaza's expansion and the other
NYC Landmark protection. Fowlers Square and the streetscape immediately surrounding the
current plaza are not currently protected by NYC Landmarks regulations however concurrently
the FGA is undergoing a review by NYC Landmarks Preservation Commission to re-
view the surroundings which the FGA and historian Andrew S. Dolkart deem significant to the
overall historic fabric of Fort Greene. In its overarching goal the FGA hopes to expand the
Fort Greene Historic District, connecting it with that of the BAM Historic District to form a co-
hesive Historic District, the Gateway and centerpiece of which is Fowler Square.

The shop houses lining the square will become the backdrop to the proposal for the En-
hancement of Fowler Square and will truly pronounce the "Gateway to Fort Greene." For a
comparable site, see the superb retention of the shop houses in Manhattan at the northwest
corner of Ninth Street and Sixth Avenue, across from the Jefferson Market Court-
house/Library.

Many of the details of the plaza expansion need to be ironed out but the FGA is in full sup-
port of the concept to expand Fowler Square. The FGA looks forward to ongoing discussion
as we work together to design the Gateway to Fort Greene, Fowler Square.

Sincerely,
Paul Polizzi
Paul Polizzi

Chairperson - The Fort Greene Association

cc: Letitia James, Marty Markowitz, CBO, DOT

mail: Box 170563, Brooklyn, NY 11217-0563
telephone: 718.775.9855
e-mail: info@HistoricFortGreene.org
web: www.HistoricFortGreene.org

LETITIA JAMES
CHIEF OF STAFF
CITY OF NEW YORK

10 JEFFERSON AVENUE
BROOKLYN, NY 11217
OFFICE: 718.775.9855
CELL: 718.775.9855
FAX: 718.775.9855

10 CITY HALL AVENUE
BROOKLYN, NY 11217
OFFICE: 718.775.9855
CELL: 718.775.9855
FAX: 718.775.9855

June 23, 2010

Mr. Vaidila
NYC Department
55 Water Street
New York, NY

RE: FGA
Dear Mr. Kungu

BAM's
Square
Fort Greene

Dear Mr. Kungu

I am writing
re: Enhancing Fowler Square - The Gateway to Fort Greene

Dear Mr. Kellogg:

For some time now the Fort Greene Association (FGA) has been fostering the concept that
Fowler Square is the Gateway to Fort Greene indeed it was the effort of the Fort Greene Association
which rehabilitated the statue and placed it in its current setting.

The patch of green which is Fowler Square needs to be expanded. Fowler Square forms
and oasis between the busy intersections of Lafayette Avenue and Fulton Street but because
of its diminutive size is often overwhelmed by the surrounding traffic and fails to create a
green buffer to the surrounding neighborhood of homes and shops. Expansion of the park
will allow for proper landscaping to ease the effect of traffic upon the neighborhood, an effect
which will certainly increase as Atlantic Yards takes shape.

As part of its ongoing effort to secure Fowler Square as the Gateway to Fort Greene, the
FGA has been pursuing multiple outlets one of which is the plaza's expansion and the other
NYC Landmark protection. Fowlers Square and the streetscape immediately surrounding the
current plaza are not currently protected by NYC Landmarks regulations however concurrently
the FGA is undergoing a review by NYC Landmarks Preservation Commission to re-
view the surroundings which the FGA and historian Andrew S. Dolkart deem significant to the
overall historic fabric of Fort Greene. In its overarching goal the FGA hopes to expand the
Fort Greene Historic District, connecting it with that of the BAM Historic District to form a co-
hesive Historic District, the Gateway and centerpiece of which is Fowler Square.

The shop houses lining the square will become the backdrop to the proposal for the En-
hancement of Fowler Square and will truly pronounce the "Gateway to Fort Greene." For a
comparable site, see the superb retention of the shop houses in Manhattan at the northwest
corner of Ninth Street and Sixth Avenue, across from the Jefferson Market Court-
house/Library.

Many of the details of the plaza expansion need to be ironed out but the FGA is in full sup-
port of the concept to expand Fowler Square. The FGA looks forward to ongoing discussion
as we work together to design the Gateway to Fort Greene, Fowler Square.

Sincerely,
Paul Polizzi
Paul Polizzi

Chairperson - The Fort Greene Association

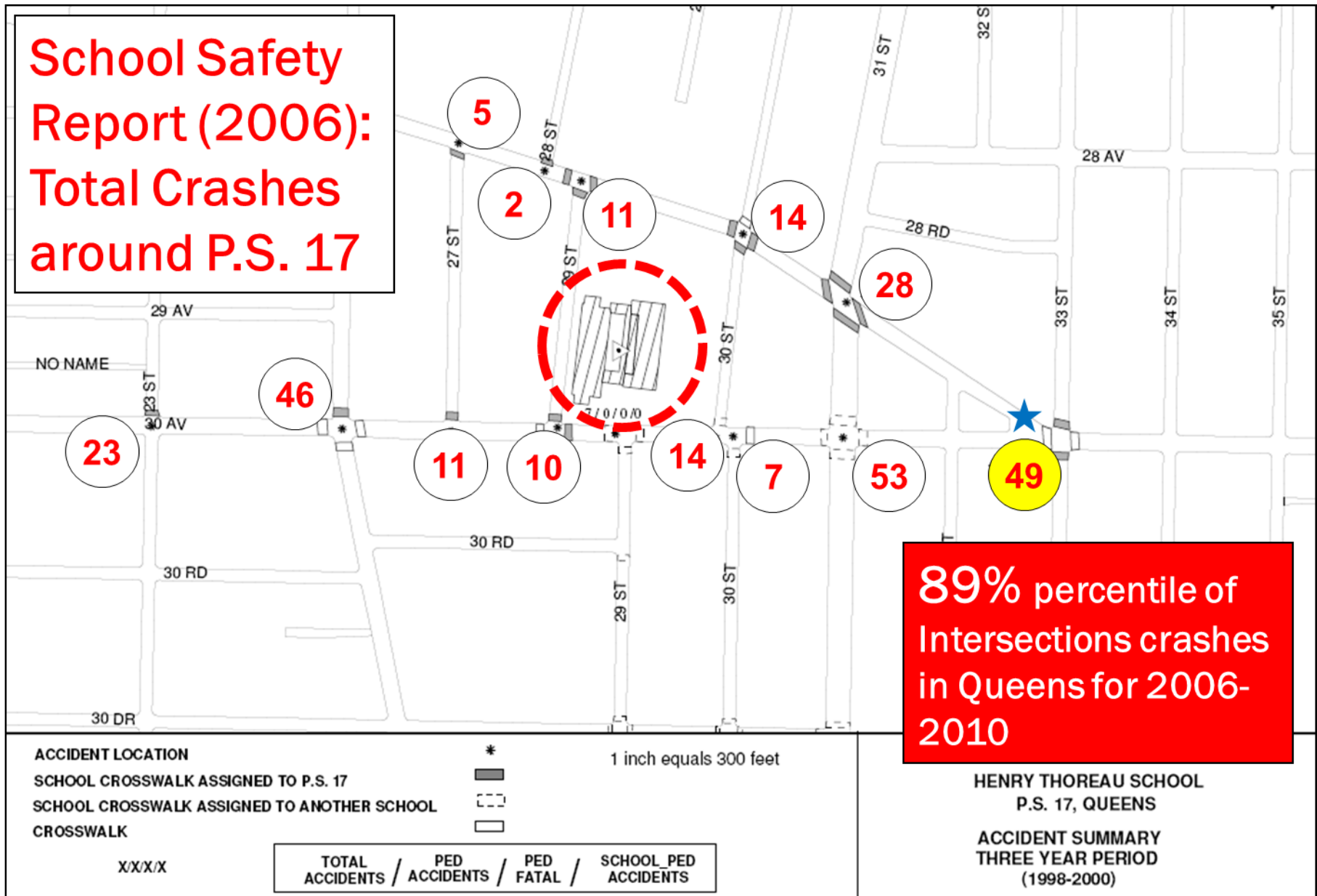
cc: Letitia James, Marty Markowitz, CBO, DOT

mail: Box 170563, Brooklyn, NY 11217-0563
telephone: 718.775.9855
e-mail: info@HistoricFortGreene.org
web: www.HistoricFortGreene.org

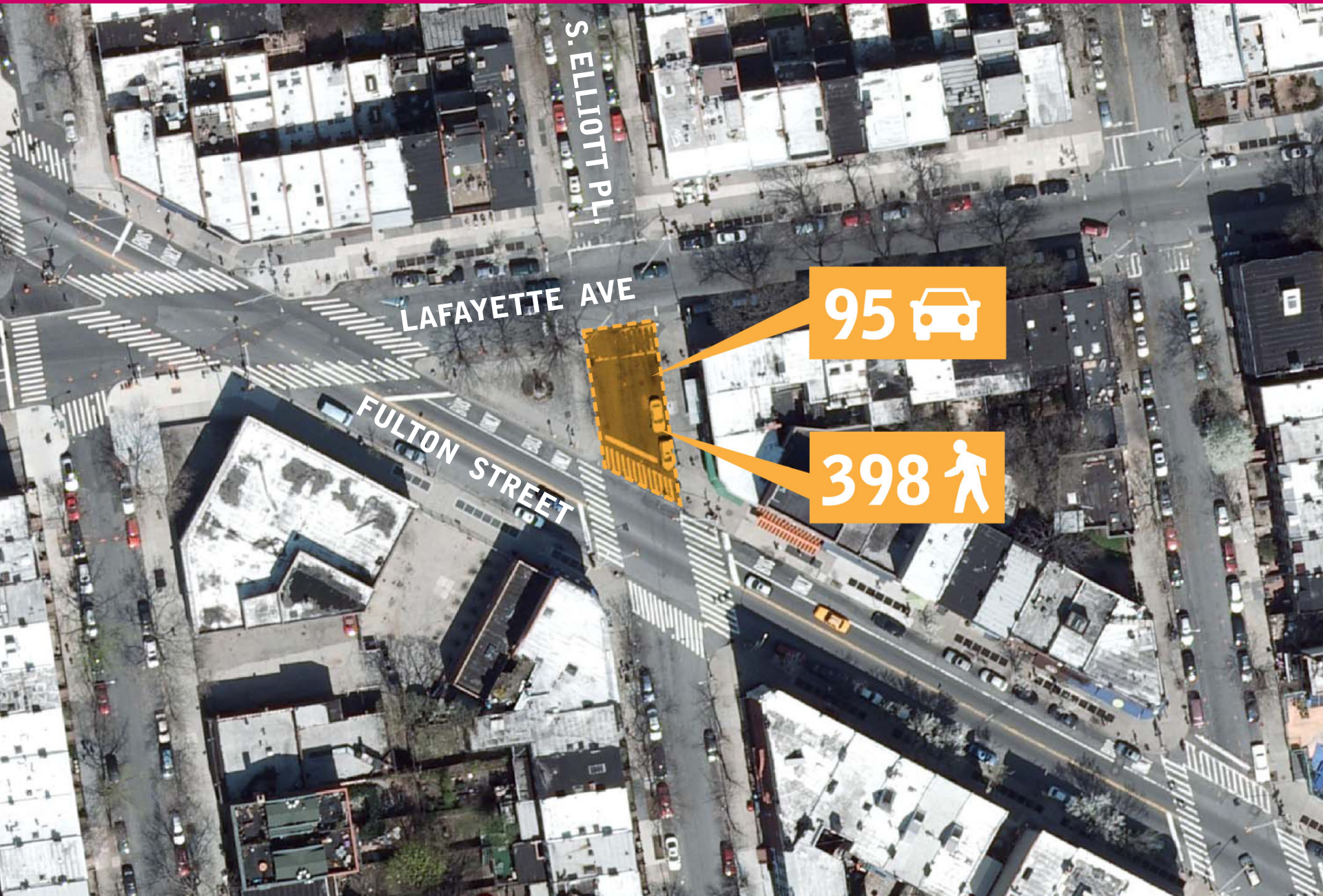


Where: Safety

**School Safety
Report (2006):
Total Crashes
around P.S. 17**



Where: Excessive Roadway



LAFAYETTE AVE

FULTON STREET

S. ELLIOTT PL.

95 

398 

Where: Excessive Roadway



Fowler Square, Fort Greene, Brooklyn

Where: Excessive Roadway



Fowler Square, Fort Greene, Brooklyn

Where: Excessive Roadway



Marcy Plaza

Bed Stuy,
Brooklyn



Proposed Rendering

Where: Active Pedestrian Corridors



Where: Active Retail & Transit



Plaza Program: One-Day Plaza



163rd Street & Elton Avenue, Bronx

Plaza Program: Interim Materials



Putnam Plaza, Brooklyn

Plaza Program: Permanent Materials



Albee Square, Brooklyn

Outreach: Advance Notification



A new plaza is planned here.



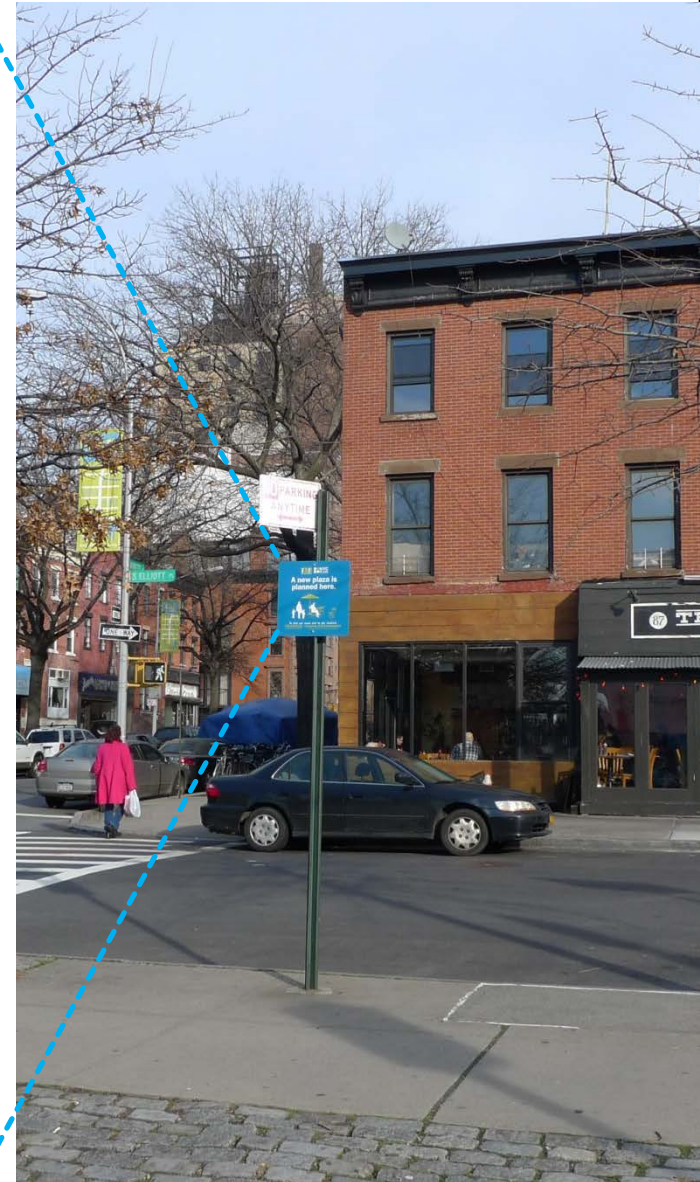
To find out more and to get involved:

718-439-2722

for an audio message from FAB

facebook.com/fowlersquare

to connect with DOT's plaza project at Fowler Square



Outreach: Project Updates

[HOME](#)[UPCOMING EVENTS](#)[CONTACT](#)[WEBSITE](#)[BOROUGHES](#)[ARCHIVE](#)

ABOUT

NYC DOT works with selected not-for-profit organizations to create neighborhood plazas throughout NYC to transform underused streets into vibrant, social public spaces.

OUR PLAZAS:

Albee Square
Avenue C
Astor Place Plaza
Belmont Plaza
Bogardus Plaza
Borinquen Plaza
Broadway Blvd
Brooklyn Plaza
Canal & Baxter
Church & White
Coenties Slip
Columbus Circle Plazas
Cooper Square Park
Cooper Square Plaza
Corona Plaza
Del Valle Square
Delancey Plaza
Diversity Plaza
Douglaston Station Plaza



Parkside Plaza is under construction! Located on the north east corner of Parkside and Ocean Ave in Brooklyn in front of the Q train. Come celebrate the grand opening this Saturday, 5/2, at 2pm!

#Parkside & Ocean #Parkside & Ocean Plaza #Brooklyn #Q Train #New York City
#NYC #NYC DOT #New York City Department of Transportation #NYC Plaza Program
#DOT Plazas #NYC Plazas

[View post](#)

Never miss a post!



dotplazas
DOT Plazas

[+ Follow](#)

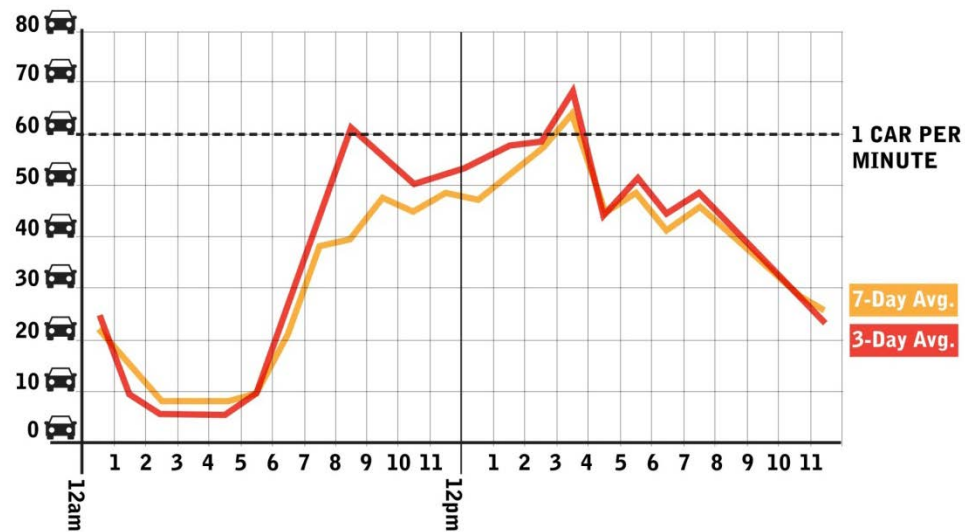
Outreach: Partner



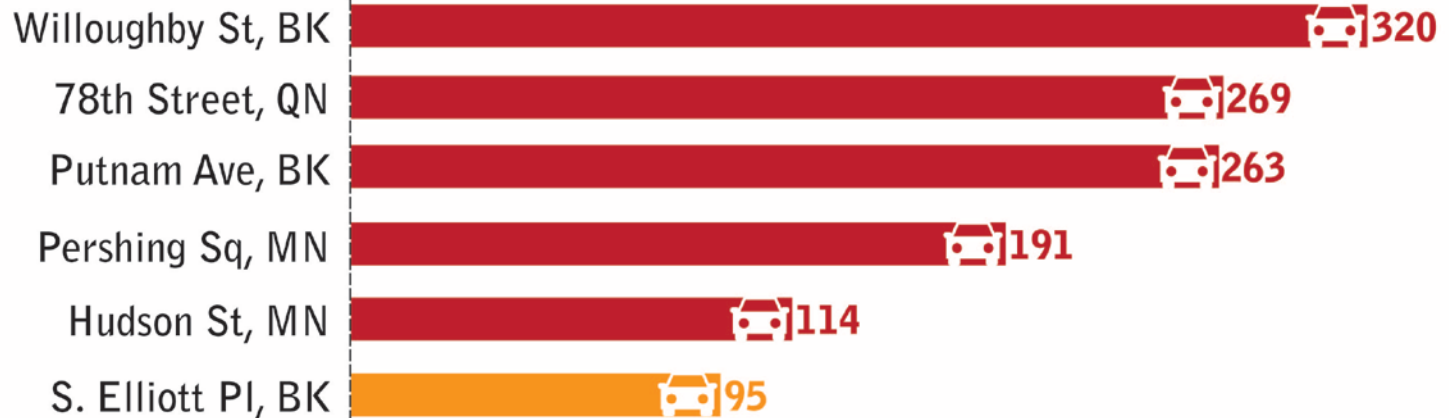
Outreach: Public Workshops



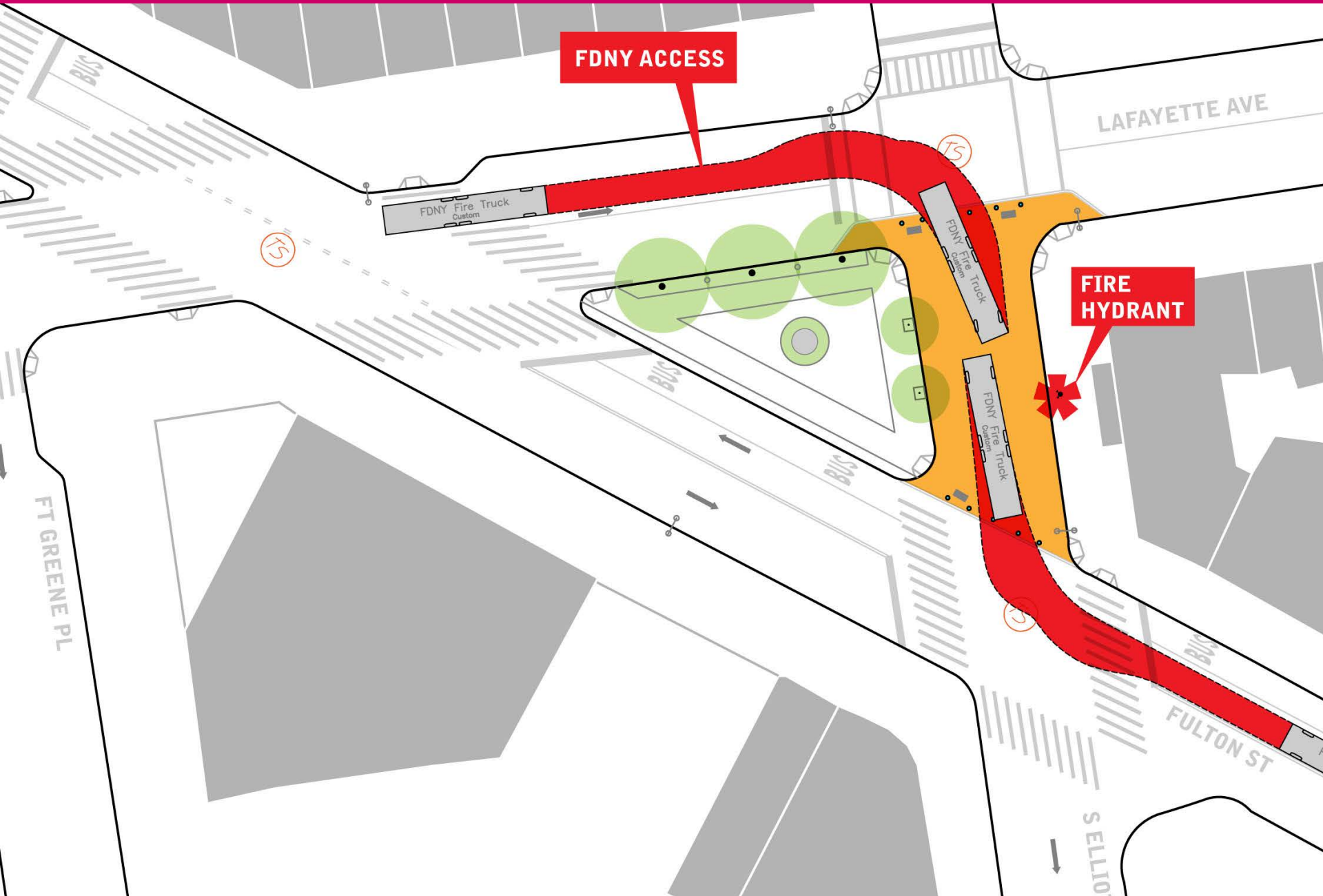
Analysis: Volumes/LOS



STREET CLOSURE PEAK # OF VEHICLES / HOUR



Analysis: FDNY/Emergency Access



Outreach: Community Board Vote

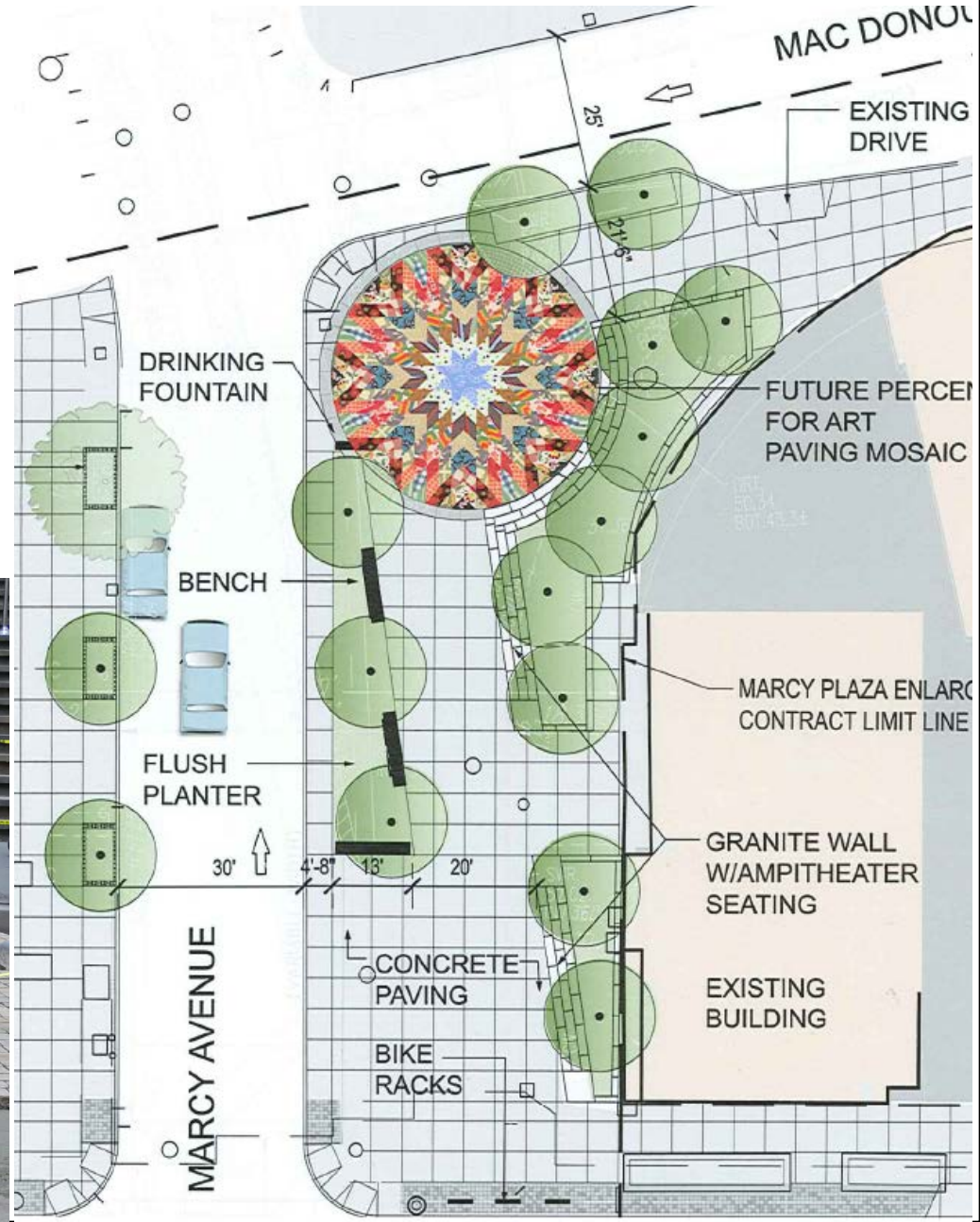
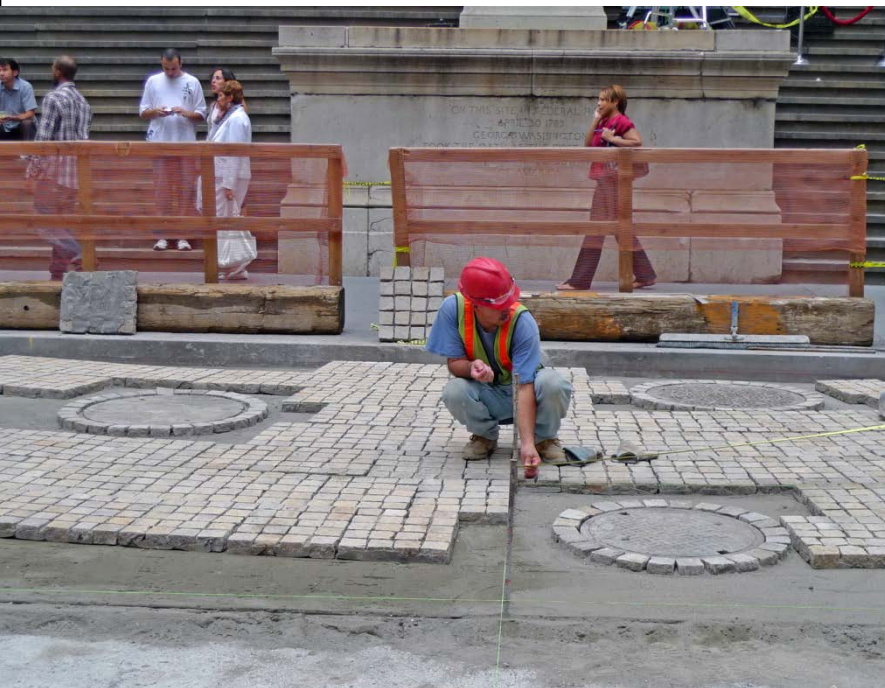


Diversity Plaza, Queens

City Agency Responsibilities

DOT & City partners:

- 1) Design & Engineering
- 2) Construction
- 3) Site Inspection



Partner Responsibilities: Maintenance



Plaza Programming: Community Events



Putnam Plaza, Brooklyn



Corona Plaza, Queens

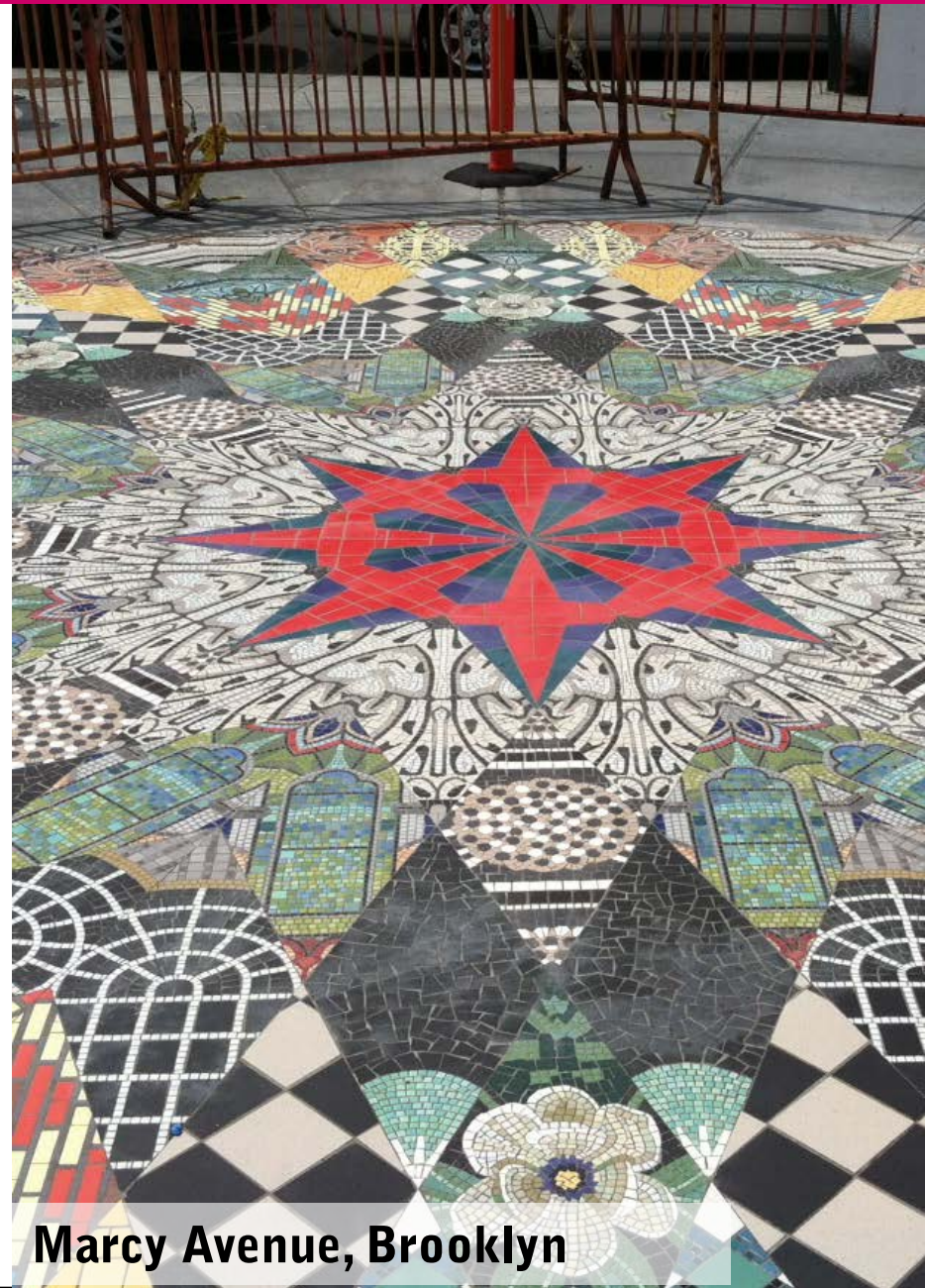
Plaza Programming: Cultural Events



Plaza Programming: Art



Flatiron, Manhattan



Marcy Avenue, Brooklyn

Plaza Programming: Art Display Case



Willoughby Plaza, Brooklyn

Revenue Type: Limited Sponsorships



Revenue Type: Subconcessions



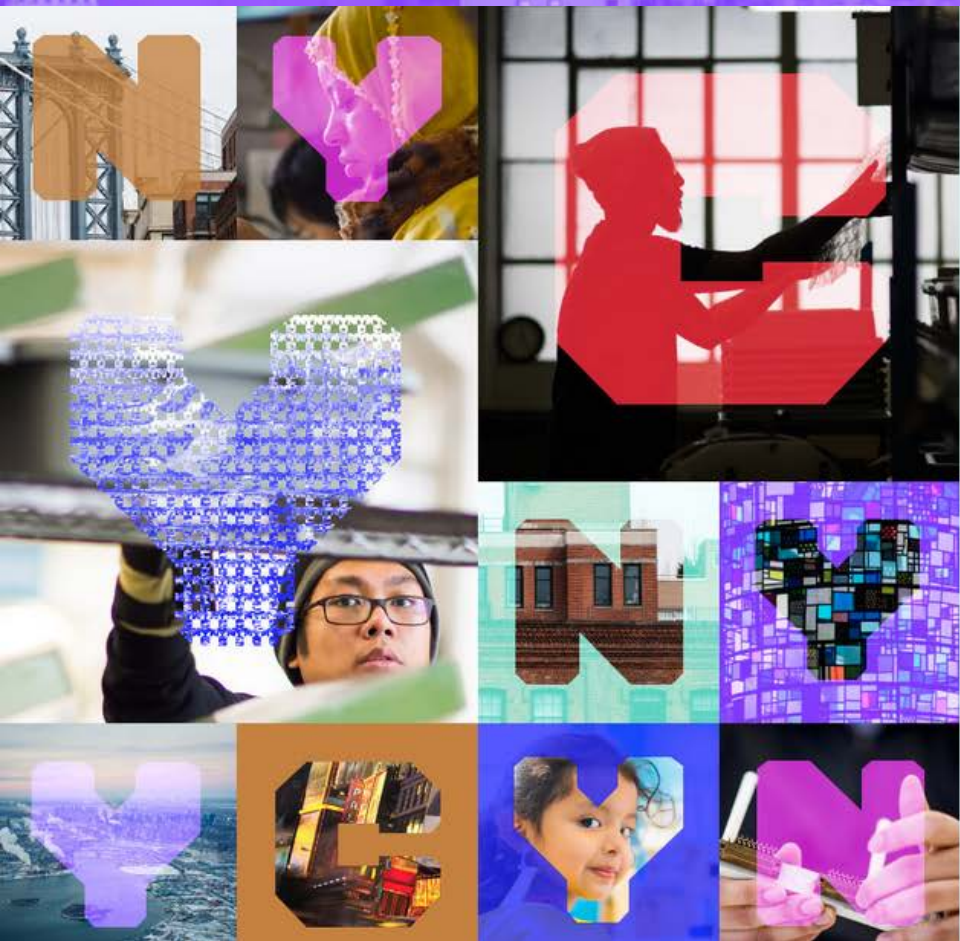
Albee Plaza, BK

Revenue Type: Commercial Events



All events are permitted by the Street Activity Permit Office (SAP0) and are subject to its requirements

#ONE NYC[®]



“

In ten years, New York City will celebrate its 400th anniversary. #OneNYC envisions our city in its 5th century and sets goals to ensure that all New Yorkers can thrive in a city that is dynamic, livable, and safe.



Mayor Bill de Blasio

OneNYC Need Ranking

Low

Partner Capacity

- Type
- Experience
- Annual Budget

Medium

Site Challenges

- Low Income Neighborhood
- Near Transit & Commercial
- Size

High

NYC Plaza Program: Application

Criteria for Rating Proposals:

- Open Space // 30 Points
- Community Initiative // 20 Points
- Site Context // 20 Points
- Capacity // 20 Points
- Income Eligibility // 10 Points

Application Deadline:

Mon. NOV 16, 2015

NYC Plaza Program // 2015

Application for Proposing Organization

Please read through the Plaza Program Application Guidelines before completing the application.

ORGANIZATIONAL INFORMATION	
Name of Proposing Organization:	
EIN/Date of Incorporation:	EIN: _____ Date: _____
NY State not-for-profit status:	Active <input type="checkbox"/> Inactive <input type="checkbox"/> Pending <input type="checkbox"/>
Address:	
	City: _____
	State: _____ Zip: _____
Phone Number:	
Fax Number:	
Website:	
Executive Director/Paid Staff Head:	
Contact Person and Title:	
Contact's Address:	
	City: _____
	State: _____ Zip: _____
Contact's Telephone:	
Contact's E-mail:	

AREA SERVED BY ORGANIZATION	
Borough:	
Community Board(s):	
Neighborhood(s):	
NYC City Council Member(s) and District #(s):	

NYC Plaza Program

More Info:

**Guidelines &
Application:**

www.nyc.gov/plazas

Questions:

**Emily Weidenhof
(212) 839-4325**

plazas@dot.nyc.gov



Weekend Walks

www.nyc.gov/weekendwalks



Weekend Walks 2015

52 Events



Programming



Retail to the curb



Application Deadline Friday Nov. 20

www.nyc.gov/weekendwalks



Street Seats

www.nyc.gov/streetseats



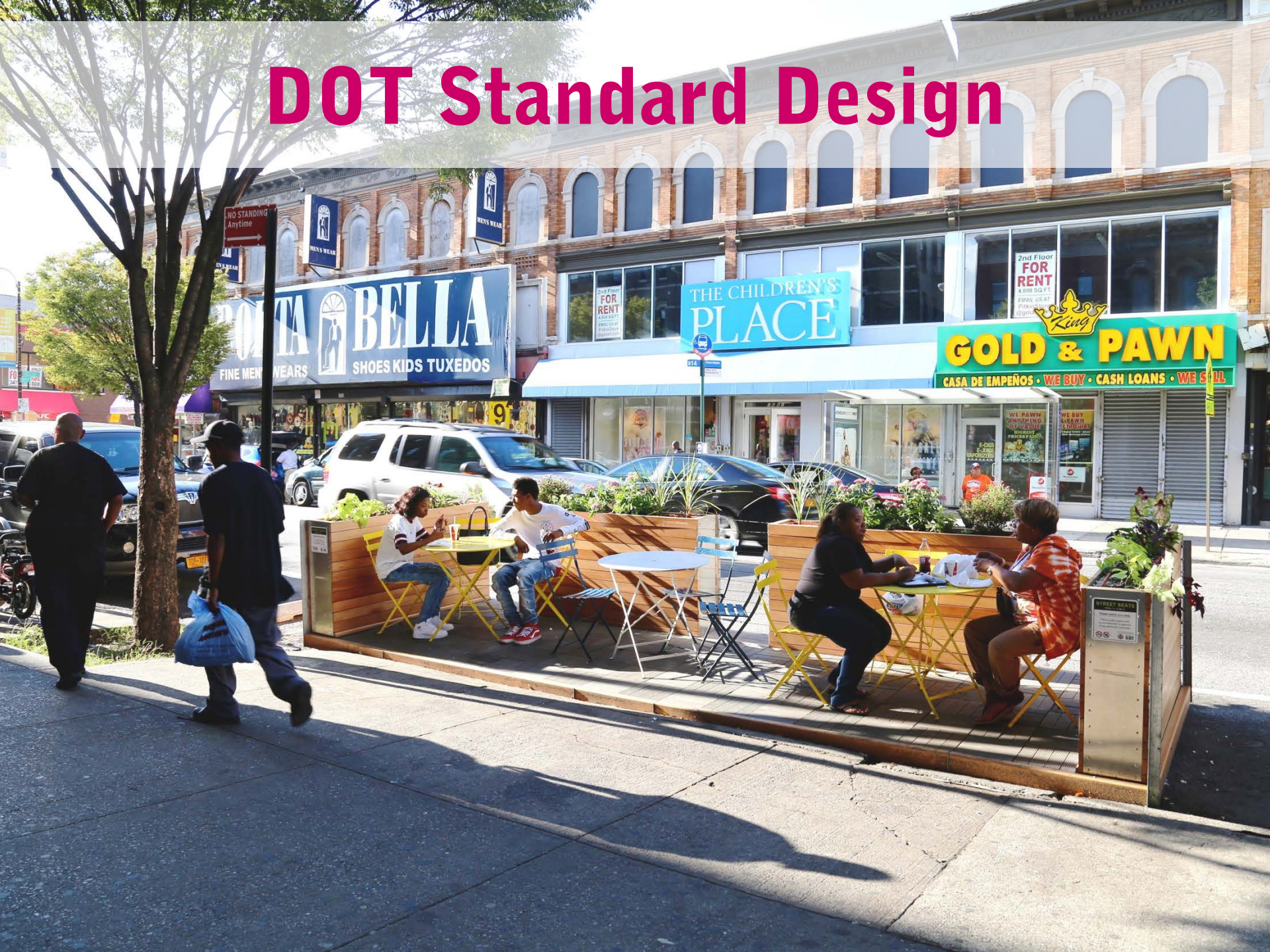
Before



After



DOT Standard Design



City Bench

www.nyc.gov/citybench



CityBench

Total Installations: 1,416

- 963 Backed
- 453 Backless

