

Manhattan Bridge & Chinatown Street Safety Improvements

Presentation to:

Manhattan Community Board 3 - Transportation Committee

July 11th, 2007

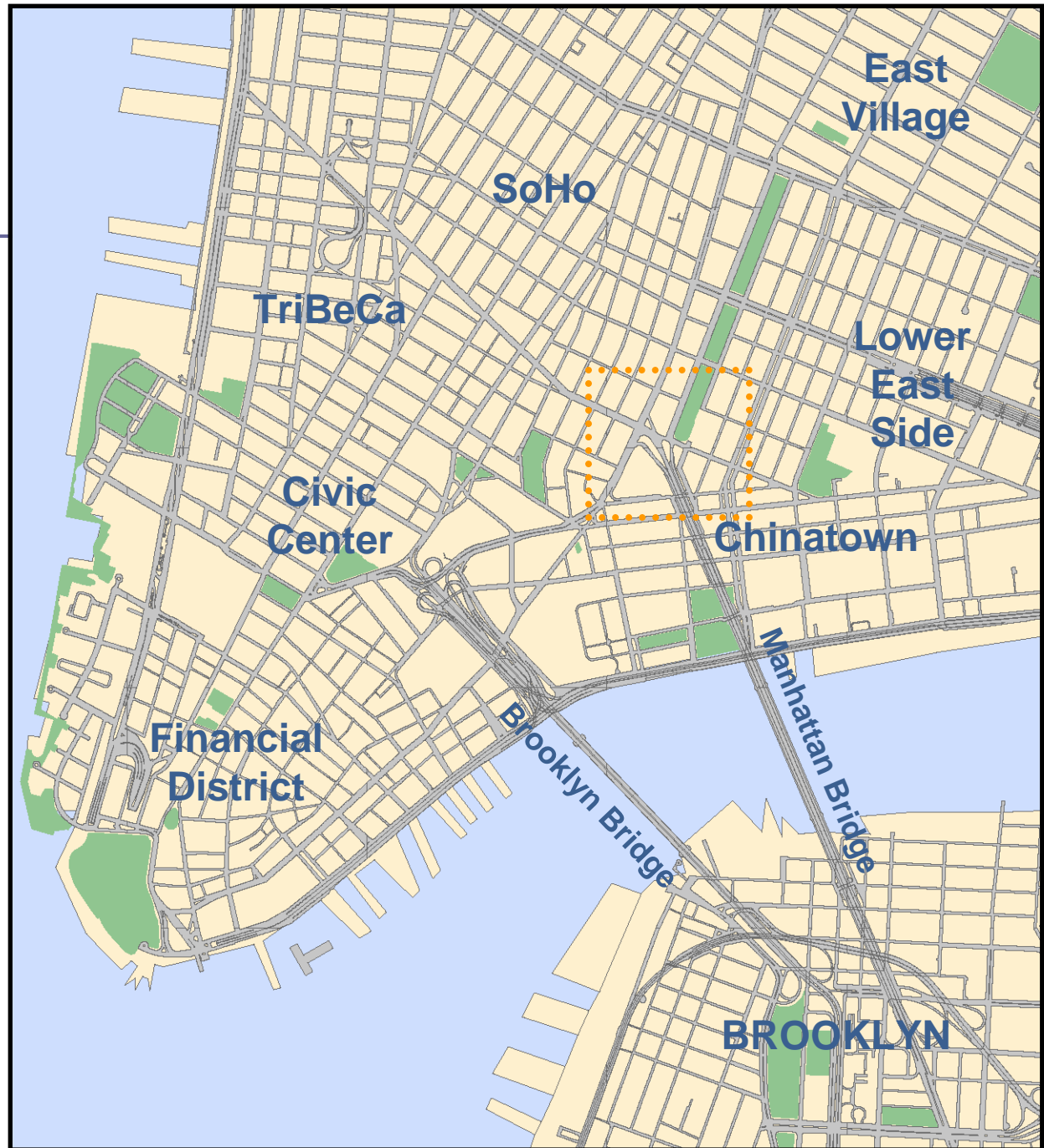


Why Are We Here?

- Priority School Reports: Improve School Safety
- Canal & Forsyth Multimodal Safety Project
- Bicycle Fatality Study: Improve Cyclist Safety
- PlaNYC: Green Transportation Infrastructure



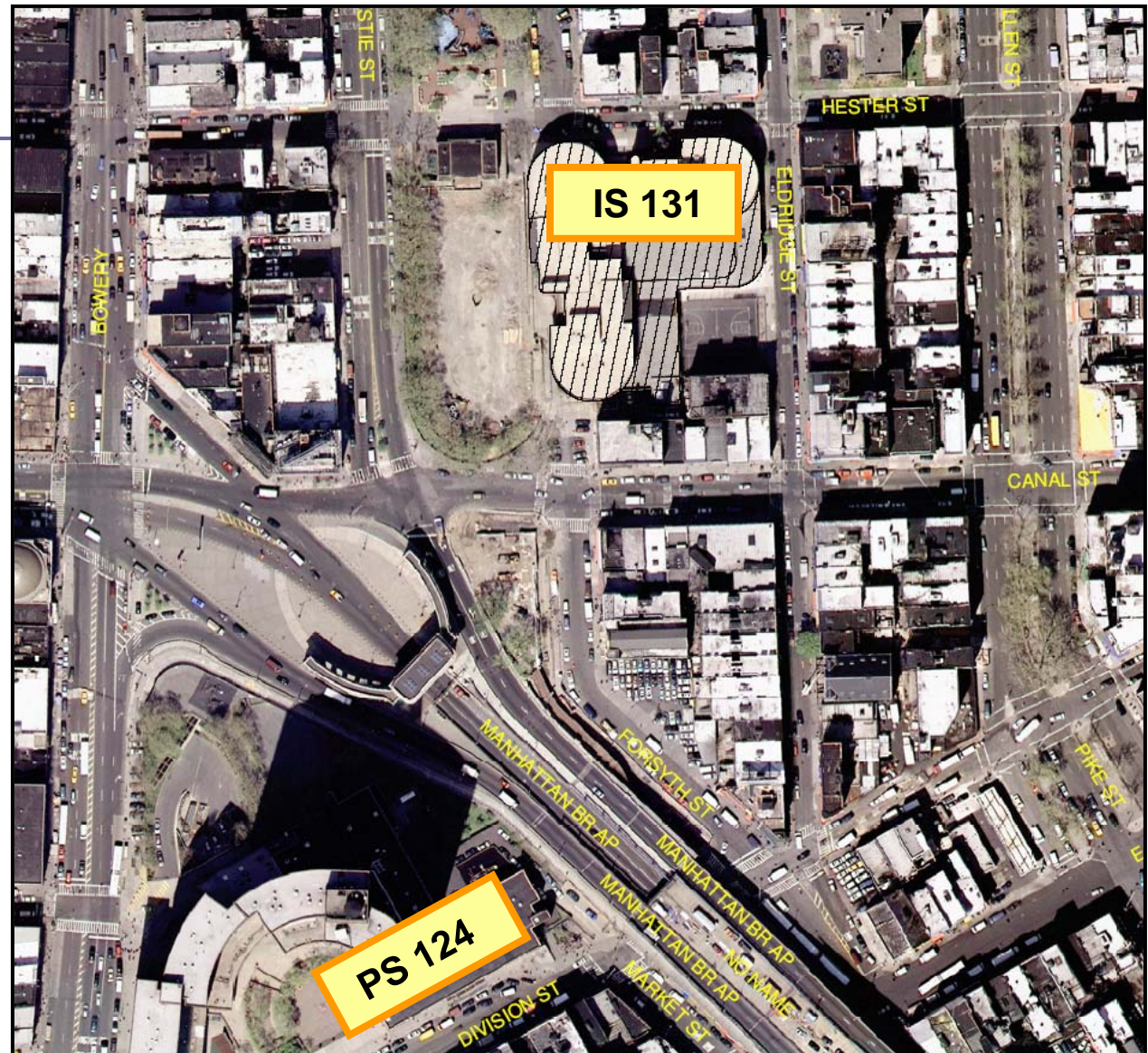
Location



School Safety Improvement Locations

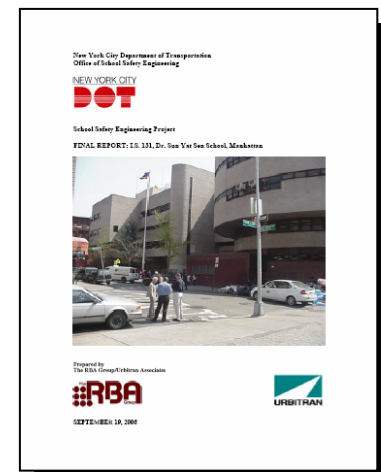
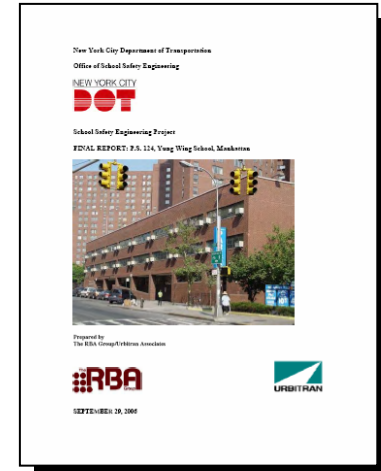
**Priority
School
location**

**Safety
Project
locations**



Priority Schools

- 135 Priority School Reports: November 2006
- **Safety Measures at IS 131 and PS 124** are scheduled for installation this summer.
- Work will be coordinated with Manhattan Bridge re-opening.
- Intersections Improvements at:
 - Canal Street (at Forsyth and Eldridge Streets)
 - Hester Street (at Chrystie, Forsyth & Eldridge streets)
 - Division Street (at Forsyth and Market streets)
 - Bowery at Bayard Street
 - East Broadway (at Market St & Catherine St)



Examples of Recommended Measures



- More than **90%** of Students at IS 131 & PS 124 **walk or take transit**
- Pedestrian Safety Improvements are the priority

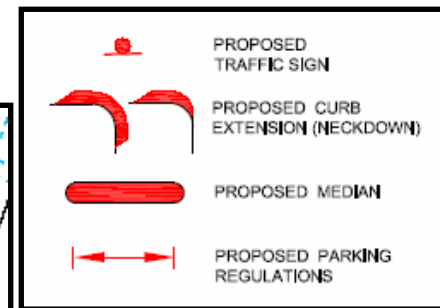
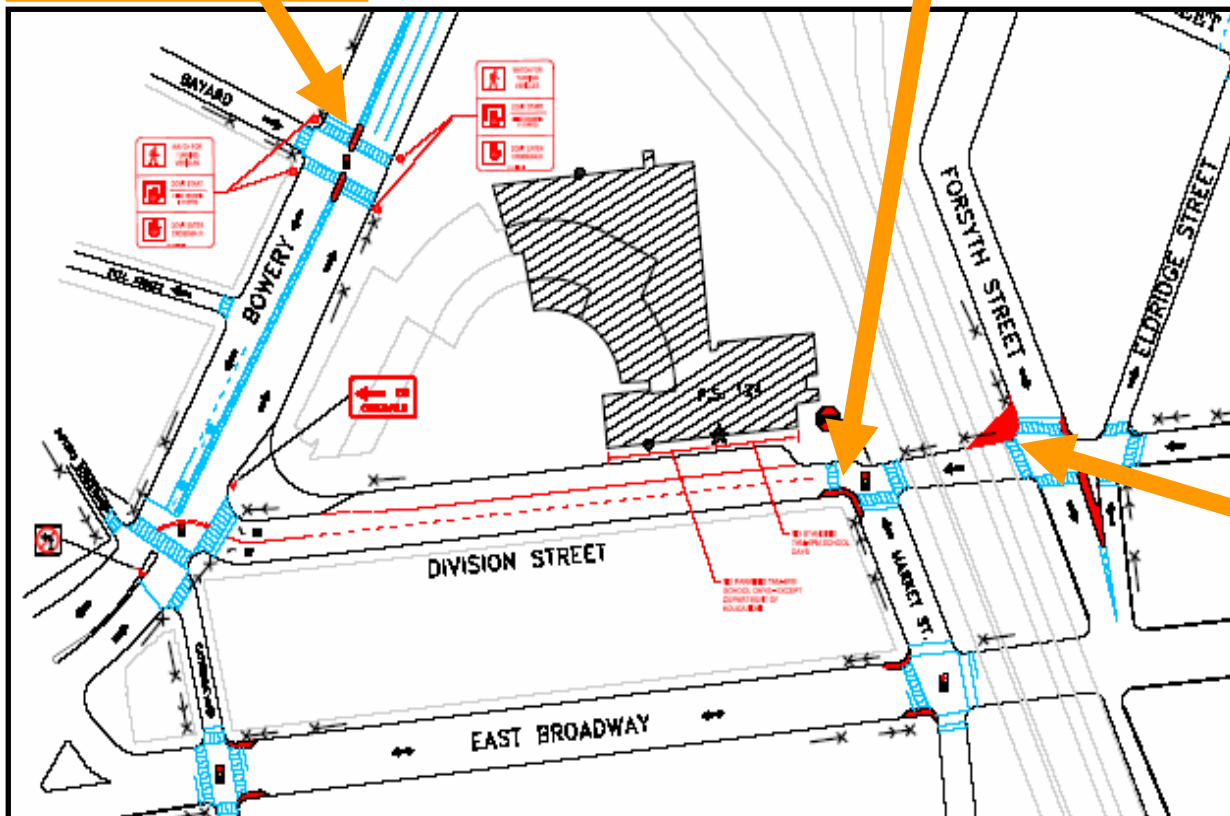
Priority School PS 124



■ Refuge Islands



■ Sidewalk Extensions



■ Extending sidewalk and closing of slip road under overpass

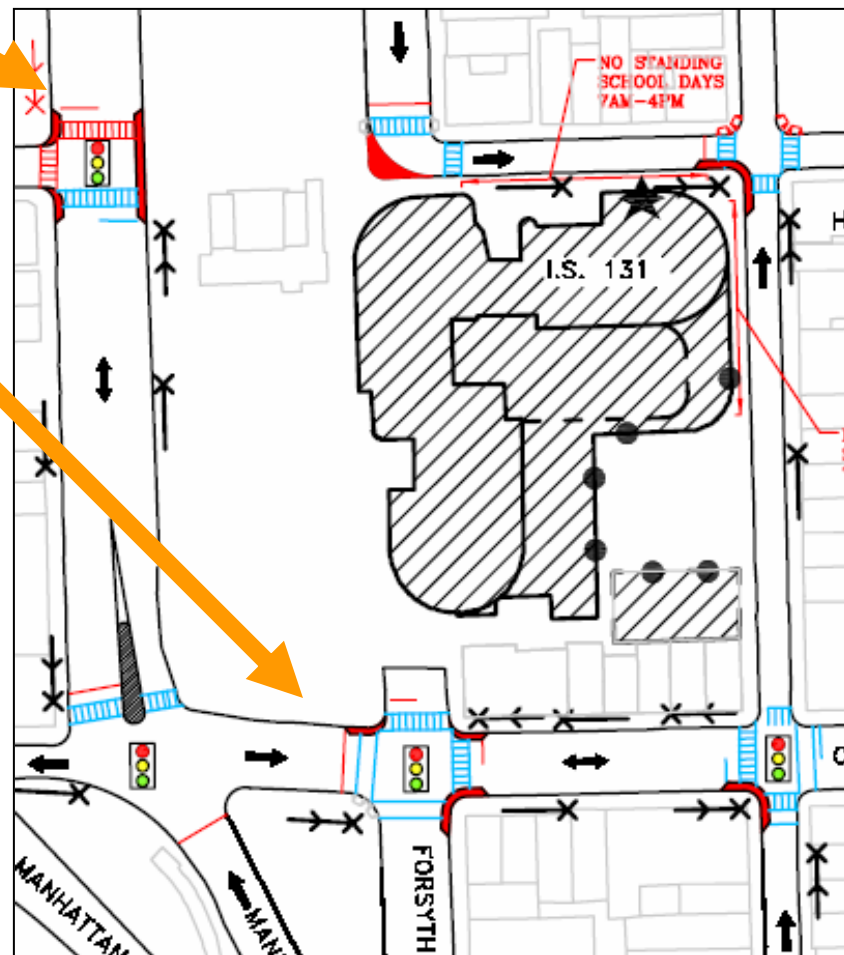
Priority School IS 131



■ Sidewalk Extension

Canal & Forsyth Issues

- Intersection doesn't function well for all users
- **Motorists:** potential head-on conflict
- **Pedestrians:** Blind corner with Cyclists exiting Manhattan Bridge & long crossings
- **Cyclists:** No westbound access to Chrystie St, conflict with pedestrians



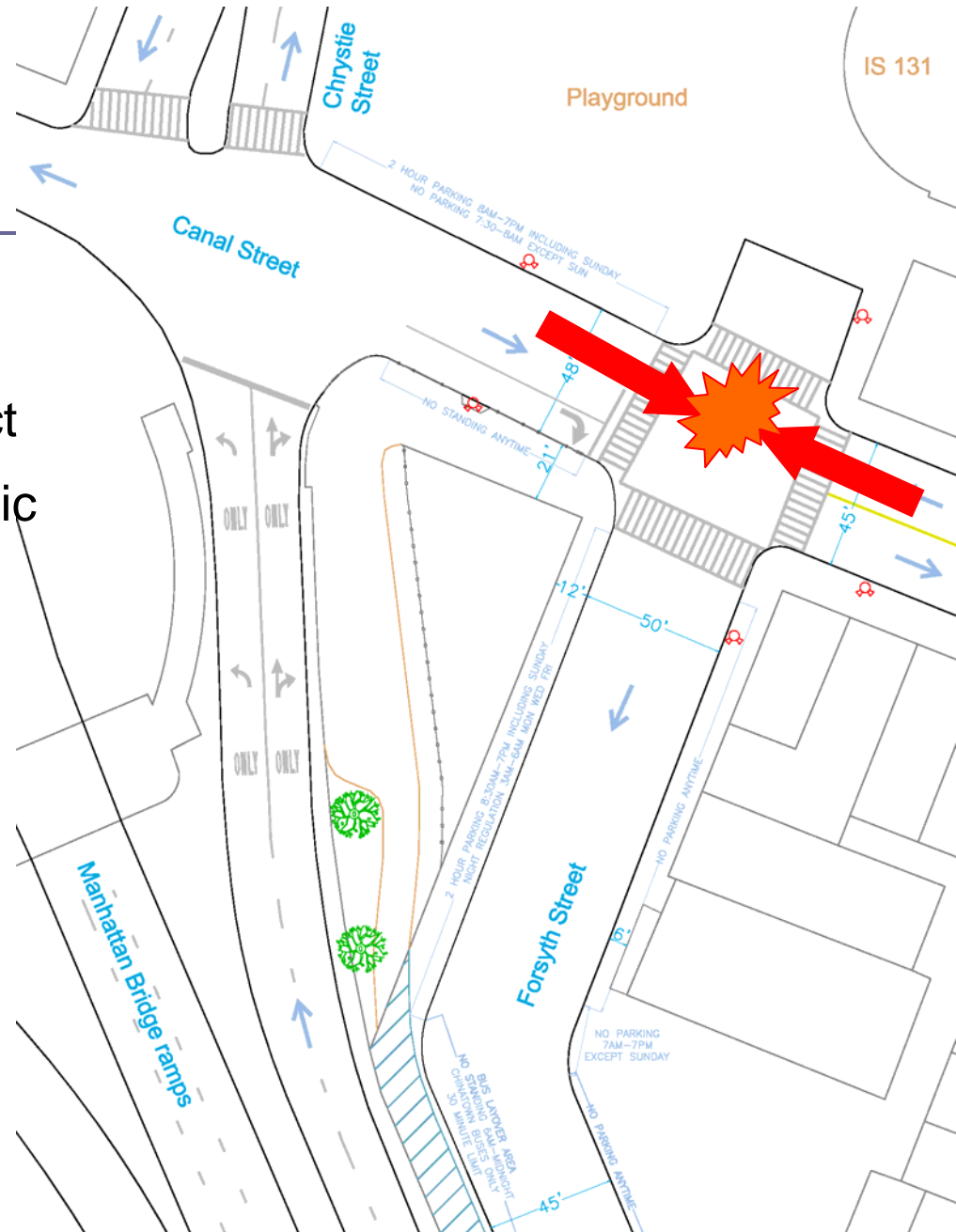
Existing Condition

Canal at Forsyth

- Vehicle head-on conflict
- Illegal Westbound Traffic on Eastbound Canal

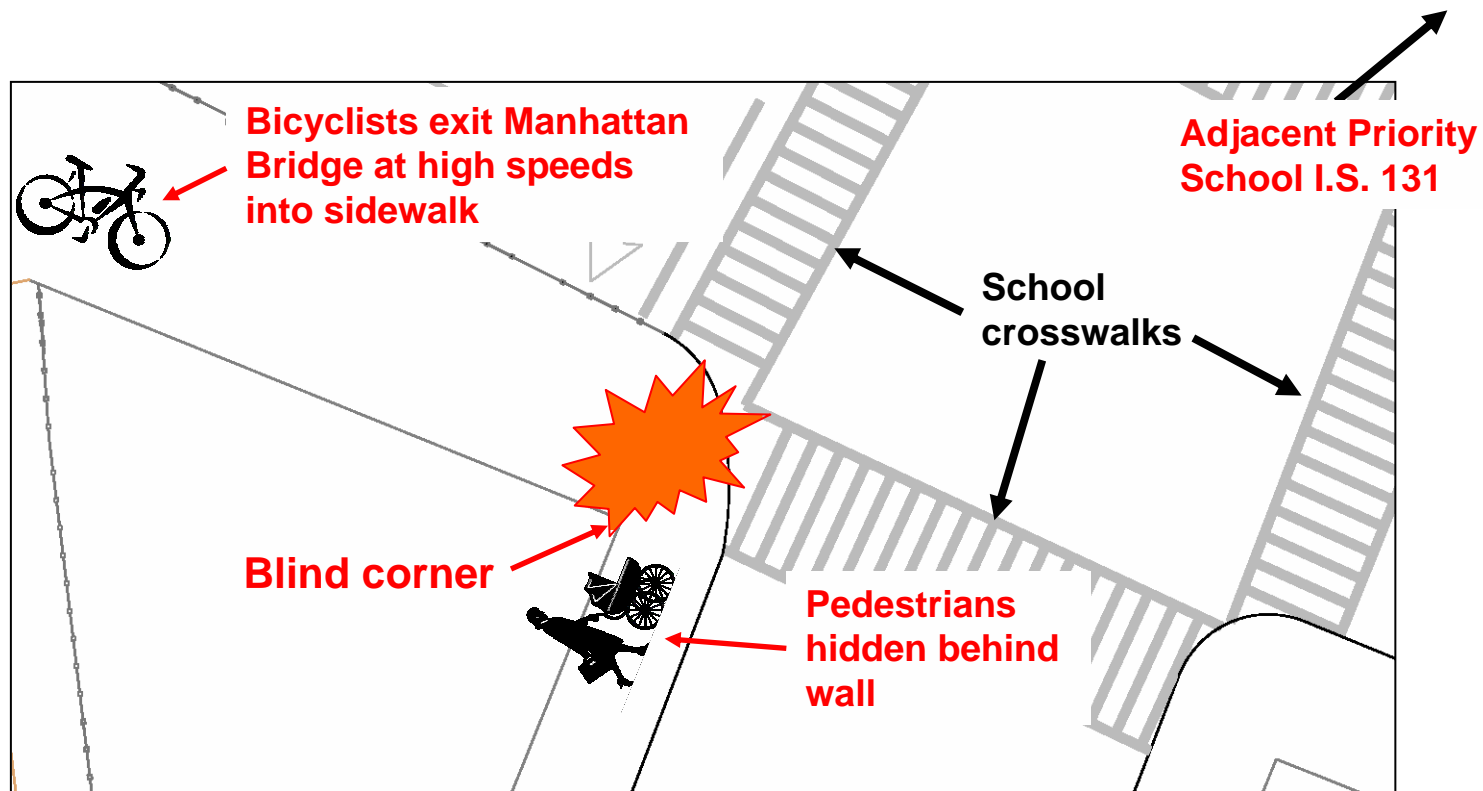


Looking west on Canal Street from Forsyth Street



Manhattan Bridge

- **Major Bicycle-Pedestrian Conflict**
- DOT has received citizen complaints about this issue



Canal at Forsyth Street

- Bicycle-pedestrian conflict

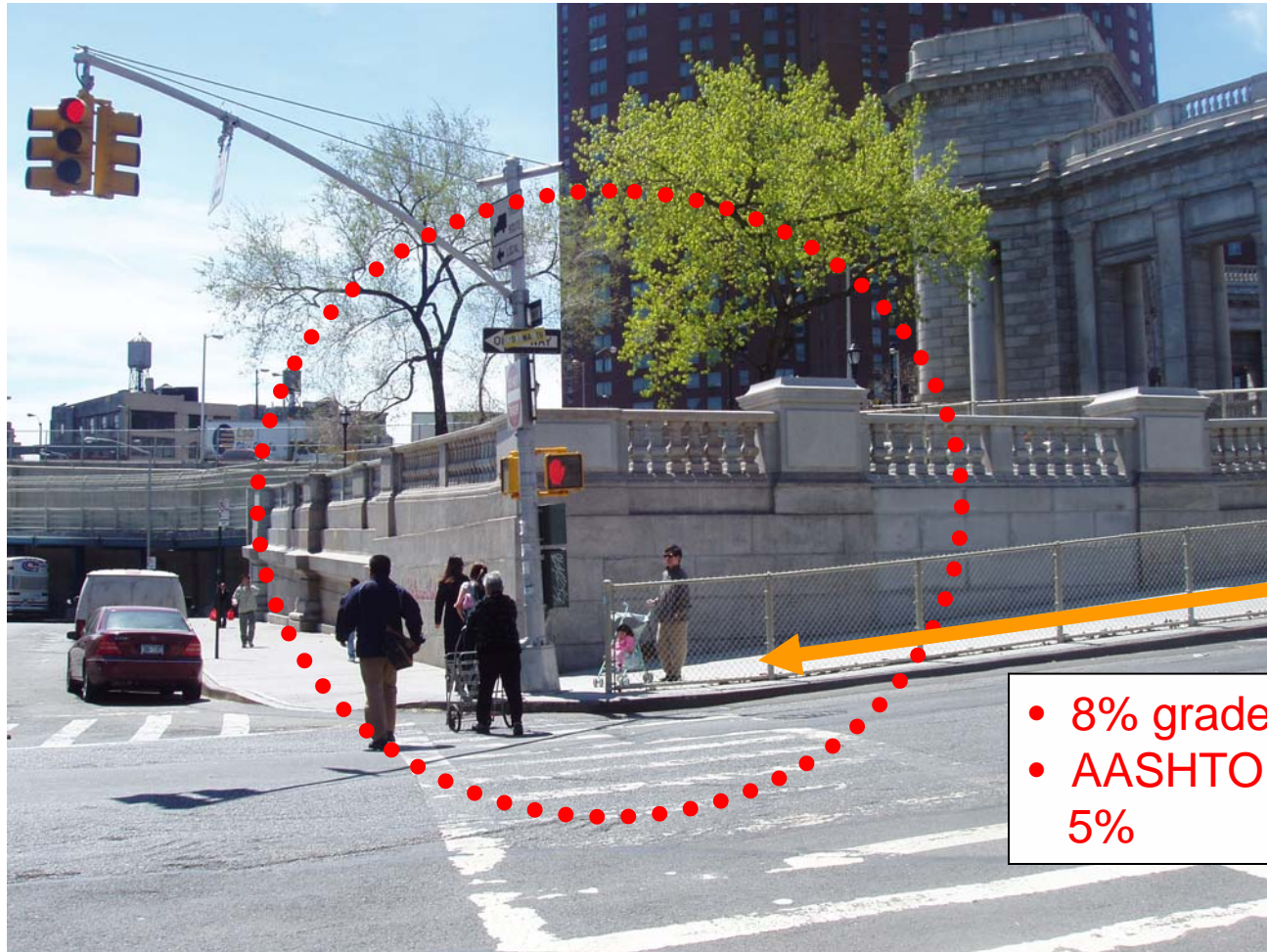
A pedestrians view looking north towards Canal Street ...



A cyclists view looking east towards Forsyth Street ...



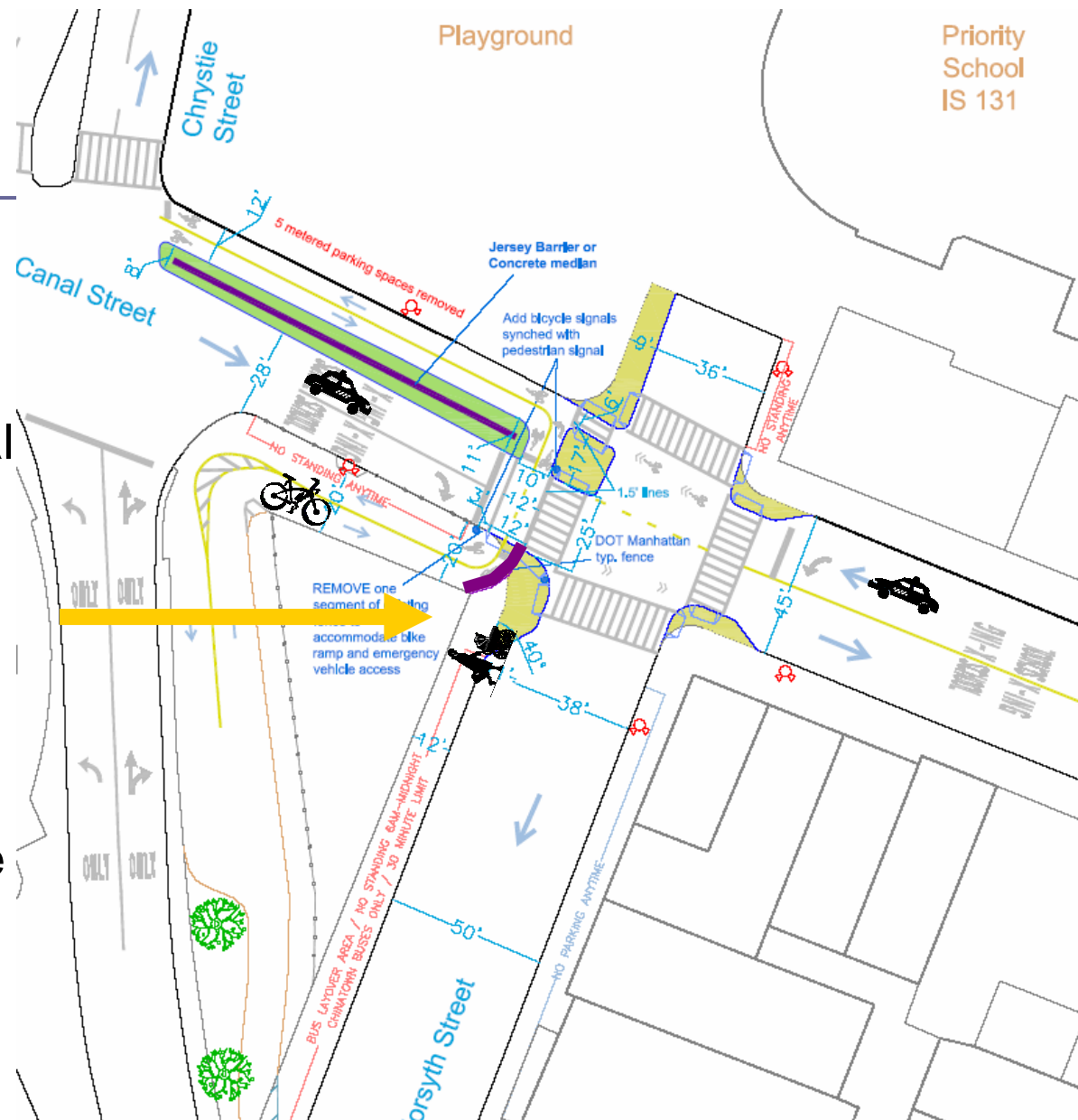
Canal at Forsyth Street



Canal Street at Forsyth Street (southwest corner)

Canal at Forsyth

- Sidewalk Extensions shorten crossing distance and provide additional space
- Fence separates bicycle & pedestrian
- Median on Canal Street will reduce head on conflict



Schedule

- Summer 2007:
 - School Safety Recommended Improvements
- Fall 2007
 - Manhattan Bridge re-opening



End of Presentation

