

Hillside and Metropolitan

Project Update

2016



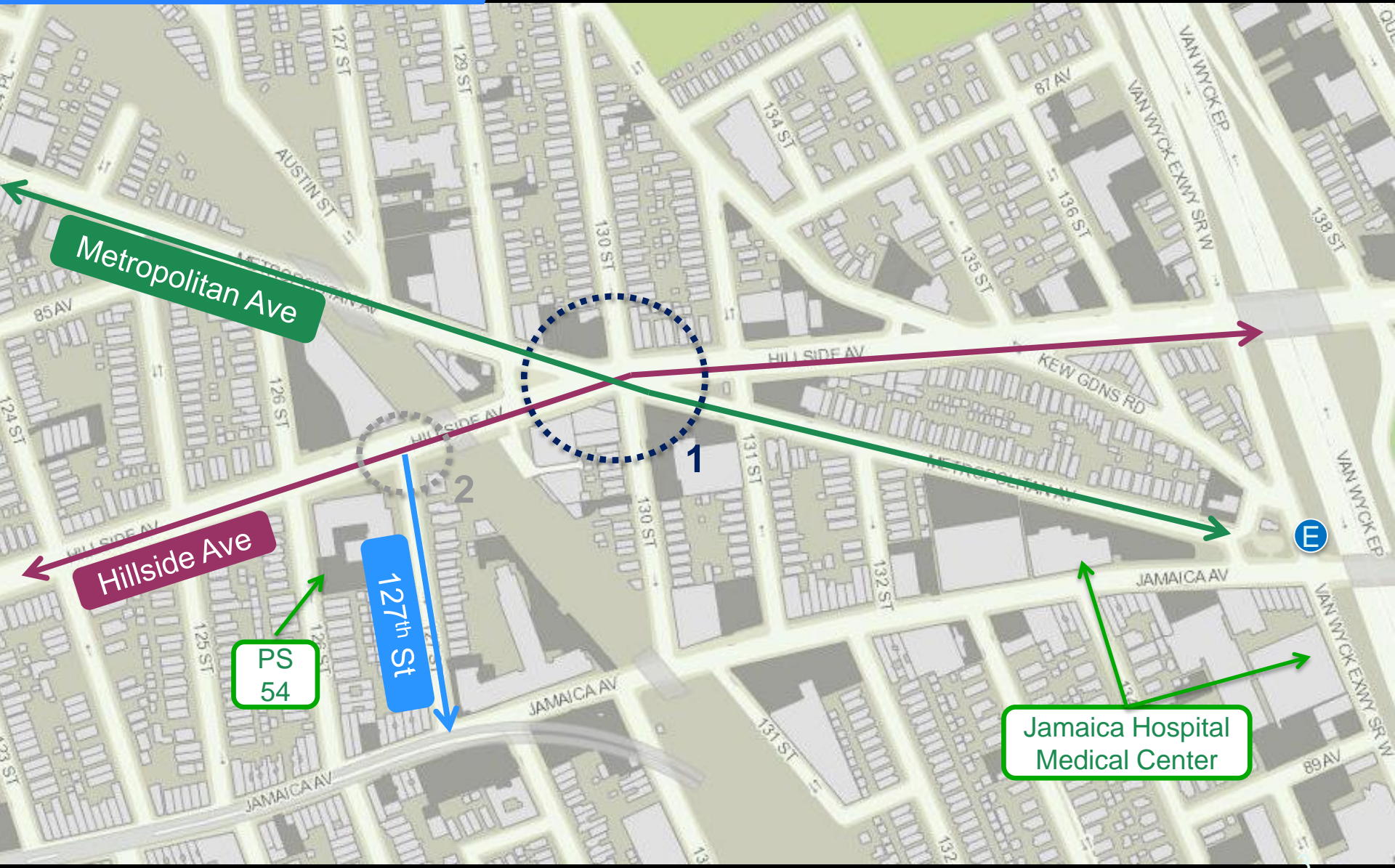
New York City Department of Transportation
Presented to Community Board 9 on February 9, 2016



Agenda

- Project update
 - Design update
- MTA bus route change
- Timeline update

Project Update



Crash History

39% of motor vehicle crashes were rear-ends in the intersection

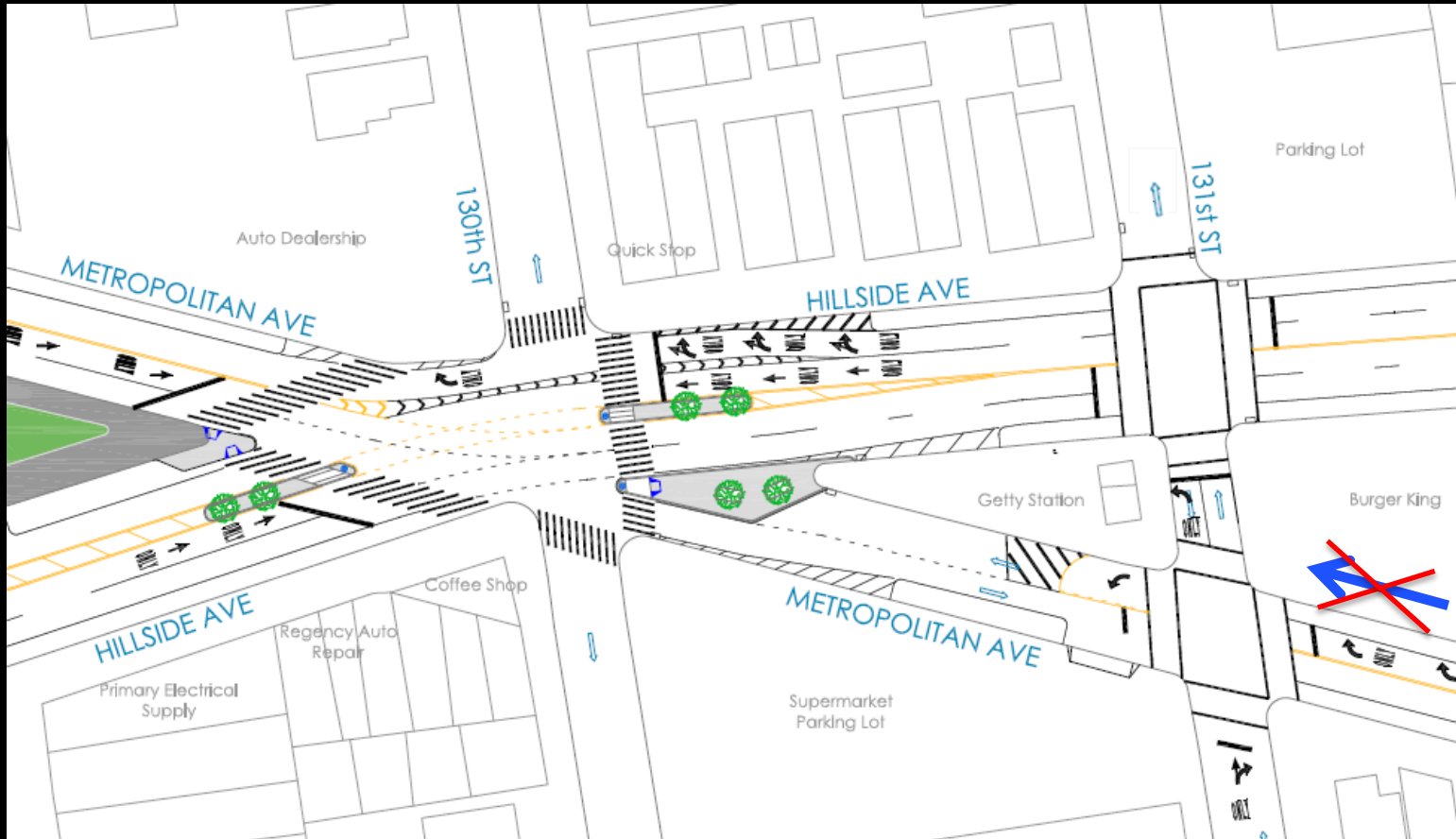
100% of pedestrian crashes took place when pedestrians are crossing with signal.



	Total Injuries	Severe Injuries
Pedestrian	4	0
Bicyclist	3	1
Motor Vehicle Occupant	39	4
Total	46	5

Metropolitan Ave at Hillside Ave
Injury Summary, 2010-2014 (5 years)

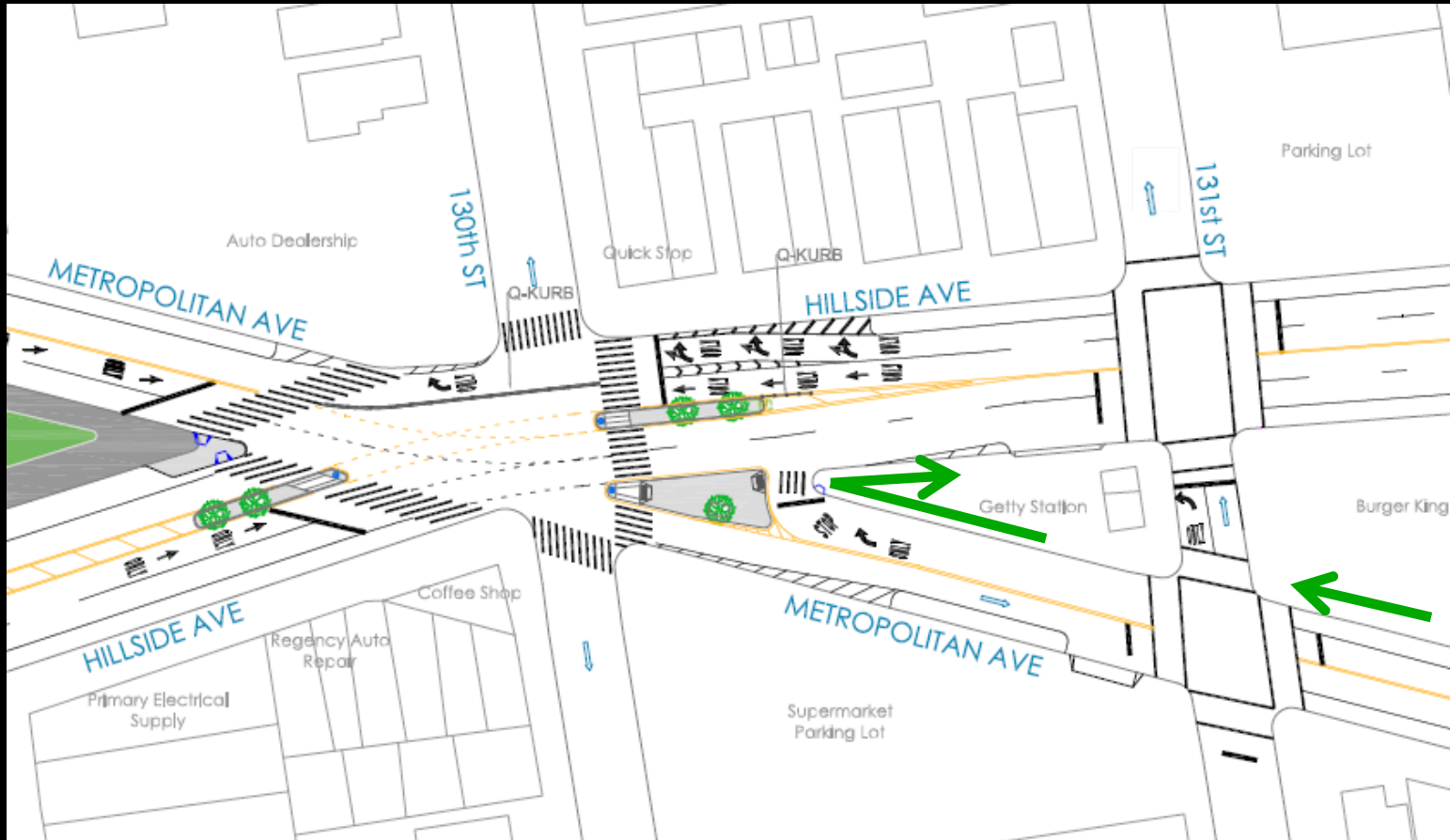
Hillside Ave/Metropolitan Ave



Previous Design

w/b Metropolitan Ave not allowed straight at 131st St

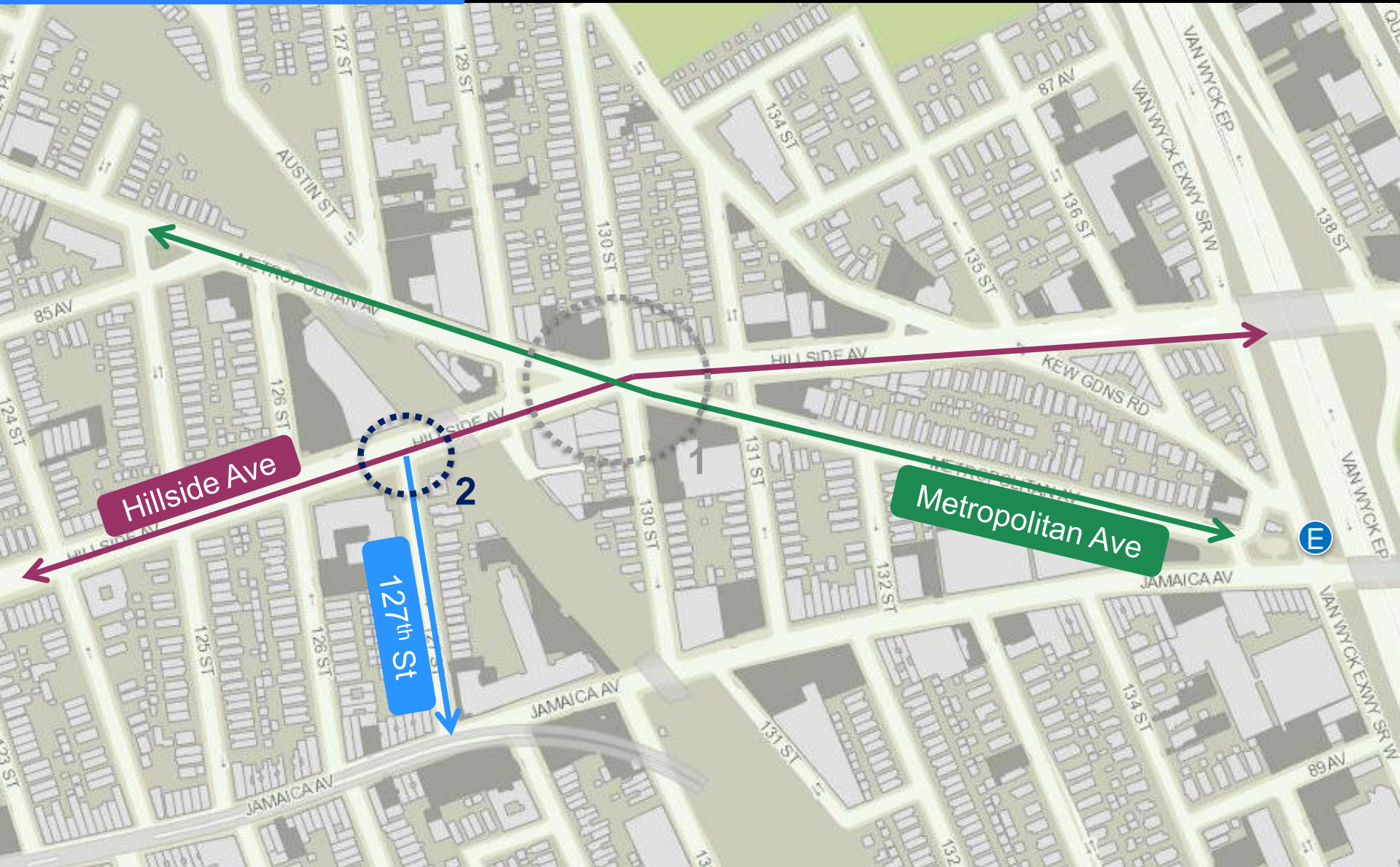
Hillside Ave/Metropolitan Ave



Updated Design

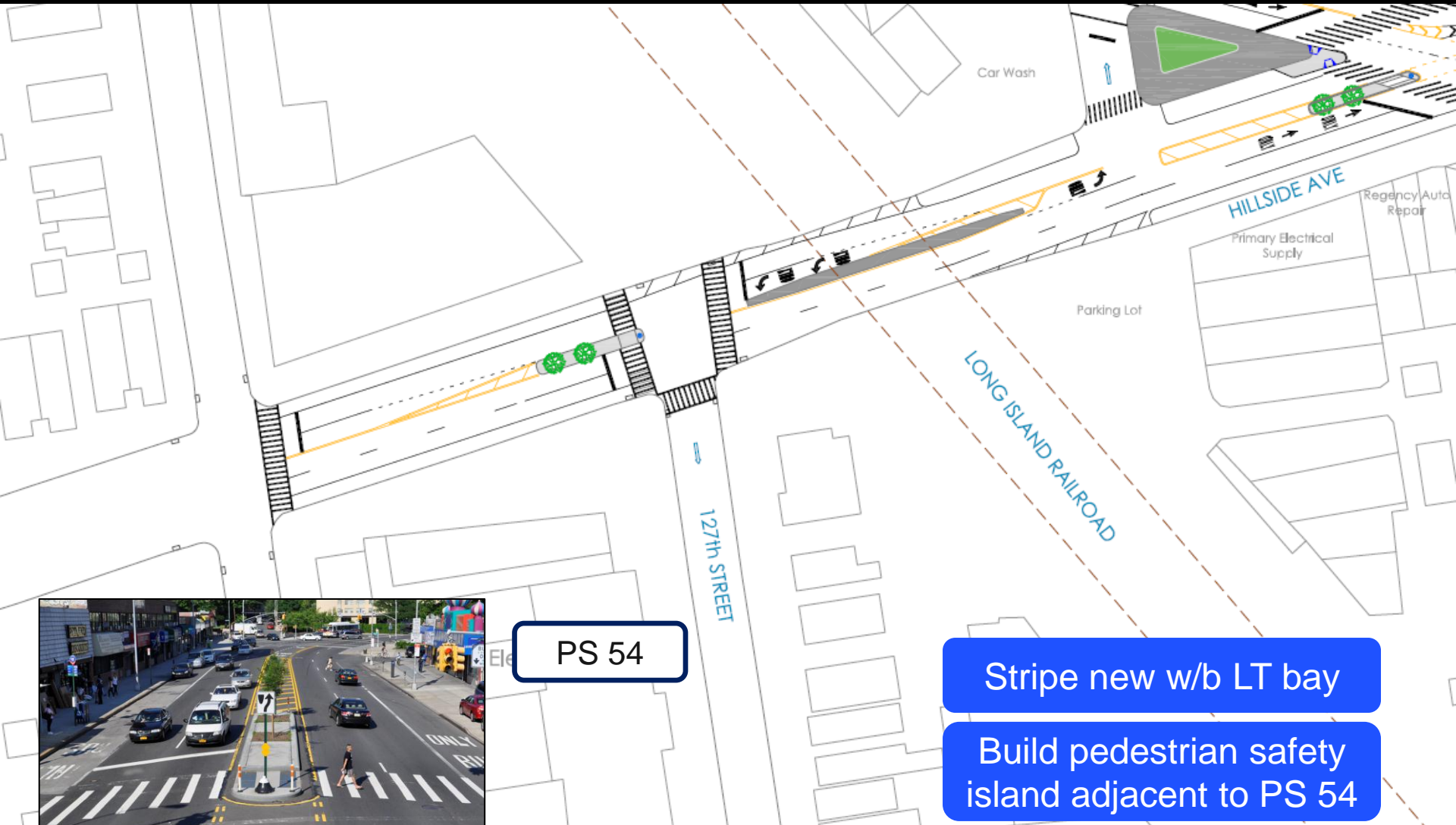
Local access allowed on
Metropolitan Ave @ 131st St

Project Update



Proposed Improvements

* No changes to design



PS 54

Stripe new w/b LT bay

Build pedestrian safety island adjacent to PS 54

Pedestrian safety island example

Q54 Bus Route Changes

- Existing Route
- Proposal Background
- Proposed Route Modifications
- Proposal Benefits

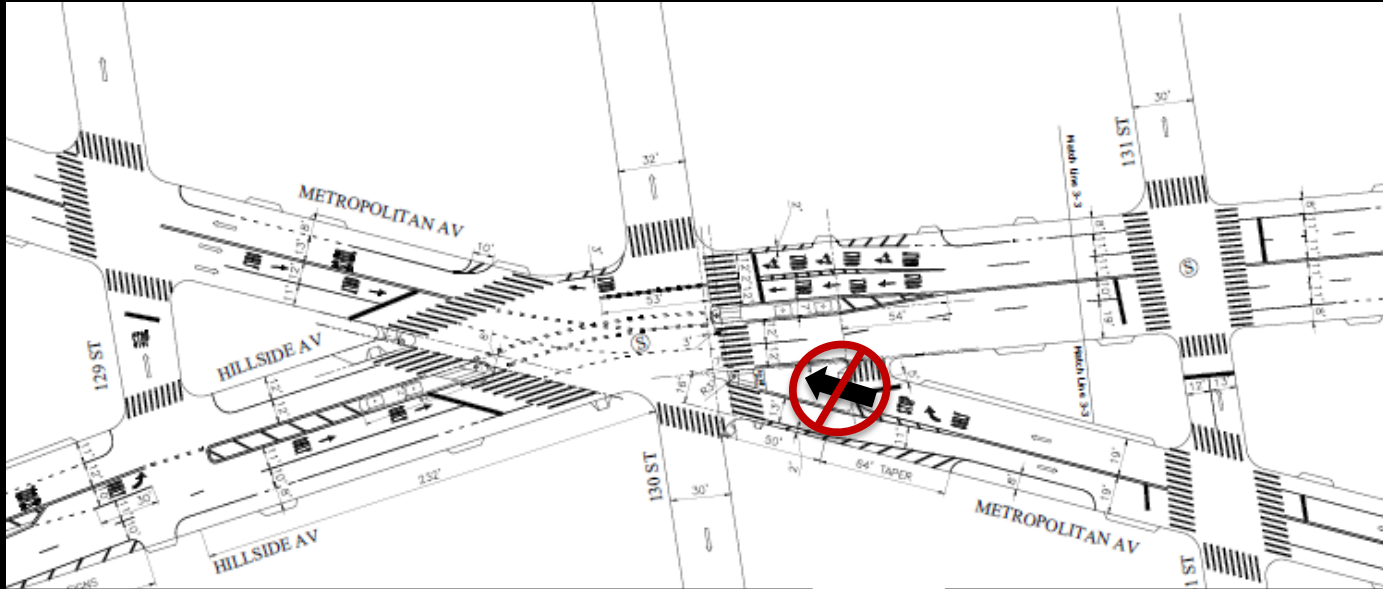
Q54 Existing Route



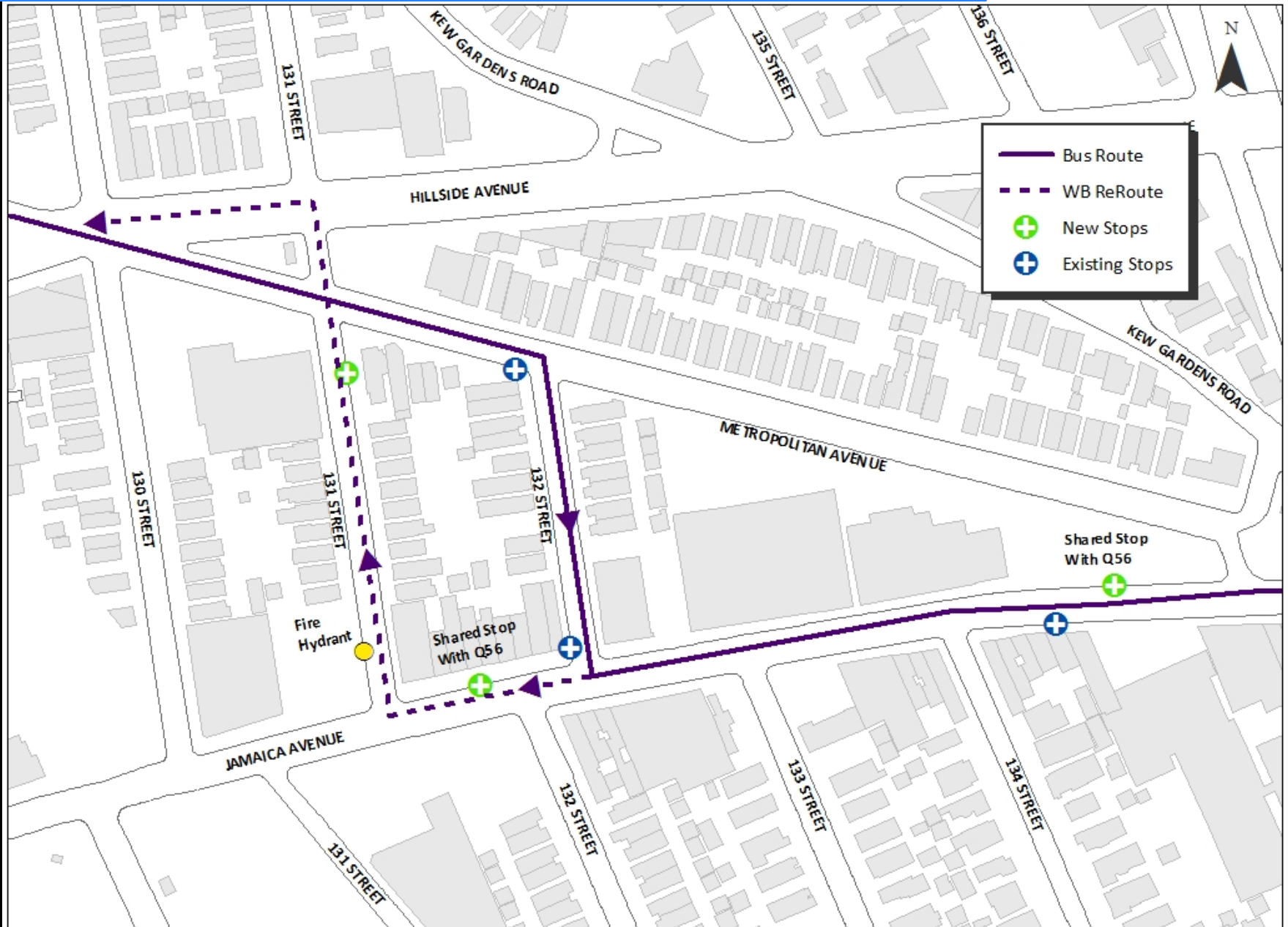
Q54 Proposal Background

Background:

DOT proposal to improve pedestrian safety at Hillside Ave and Metropolitan Ave will eliminate w/b Metropolitan Ave leg from intersection. MTA buses will turn onto Hillside Ave before continuing on Metropolitan Ave.



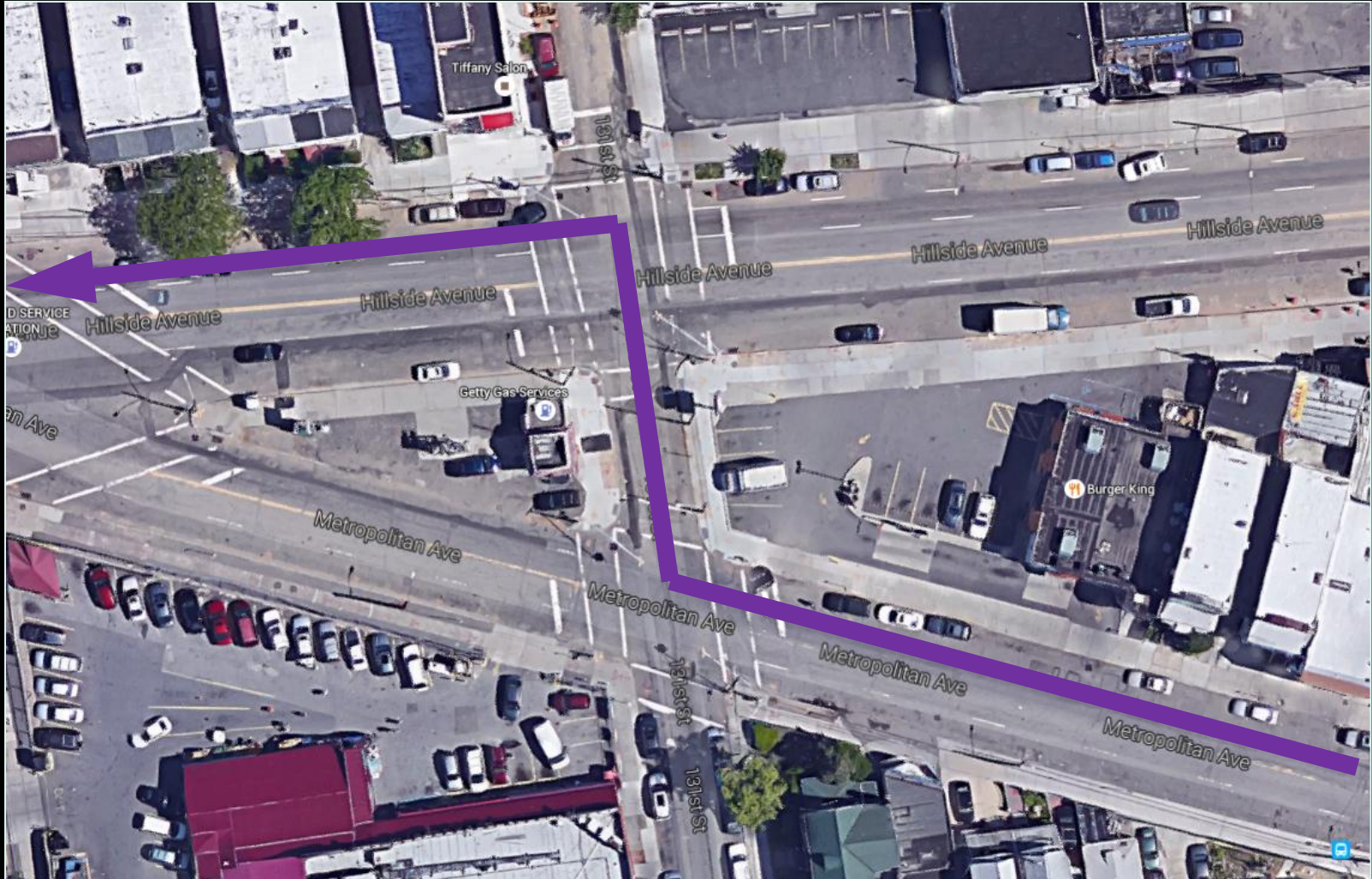
Q54 Proposed Route Modifications



Q54 Route Alternative - Rejected

Background:

Curb geometry between Hillside Ave and Metropolitan Ave does not allow buses to make the proper S-turn from Metropolitan Ave onto Hillside Ave



Q54 Proposal Benefits

Benefits:

- Returns 5-6 parking spots on Metropolitan Ave while only removing 3-4 parking spots from 131st St
- Adds one additional westbound Q54 stop on 131st St
- Relocated w/b Q54 stops have improved access to
 - Trade Fair
 - Jamaica Hospital
 - Two additional connections with Q56 bus stops on Jamaica Ave

Issues:

- Bus required to travel on 131st Street between Jamaica Ave and Hillside Ave

Timeline Update



Contact: Queens Borough
Commissioner's Office
212-839-2150



www.nyc.gov/dot

Thank
You