



# 8<sup>TH</sup> STREET

## BICYCLE LANE

New York City Department of Transportation

Presented by the Bicycle and Greenway Program on September 8, 2016 to Manhattan Community Board 2





## (1) Background

- Pedestrian Safety Project
- Bicycle Network Improvements
- Success of Citi Bike

## (2) Project Proposal

- Existing Conditions
- Proposed Design

## (3) Summary



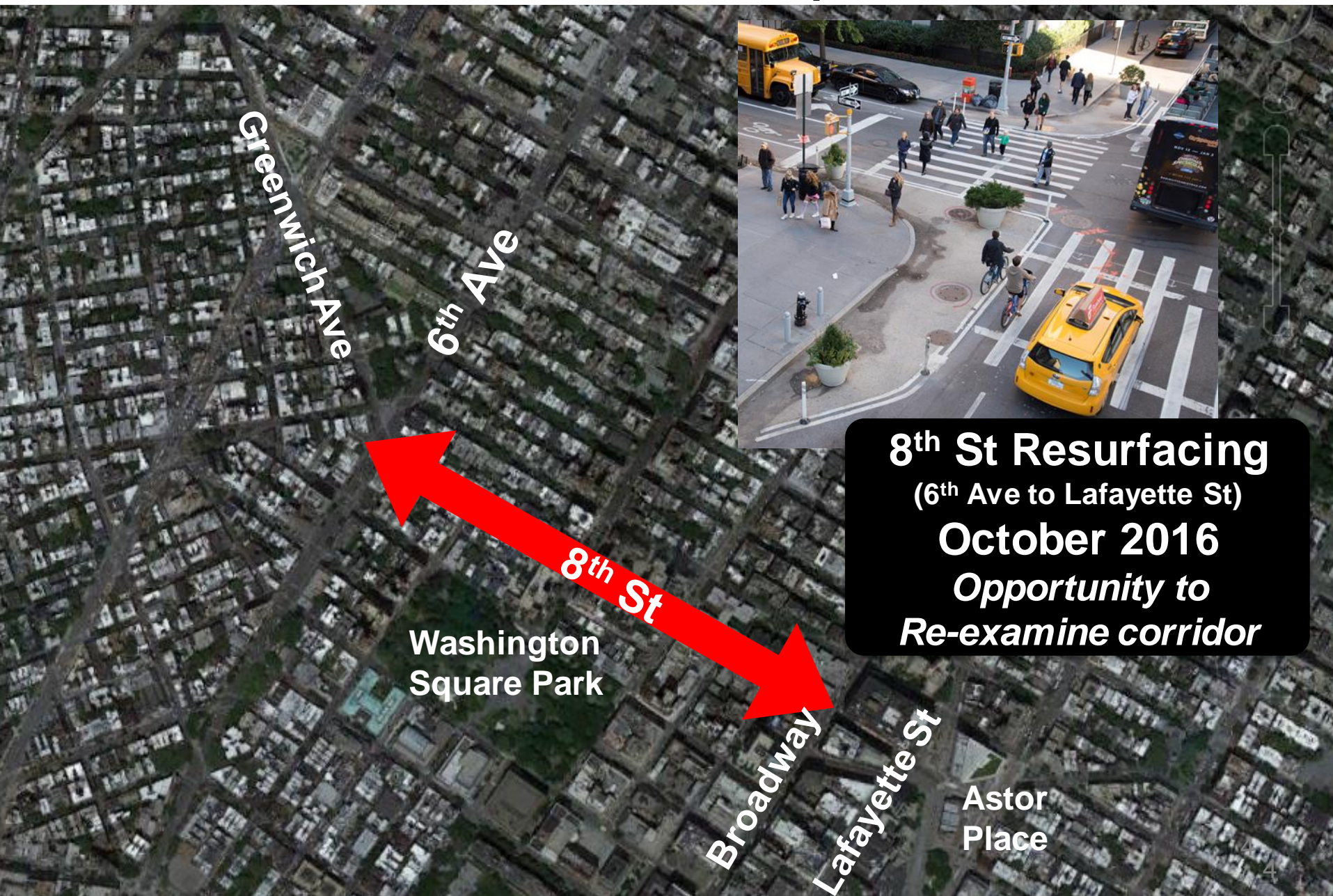
---

# PROJECT BACKGROUND

# 1



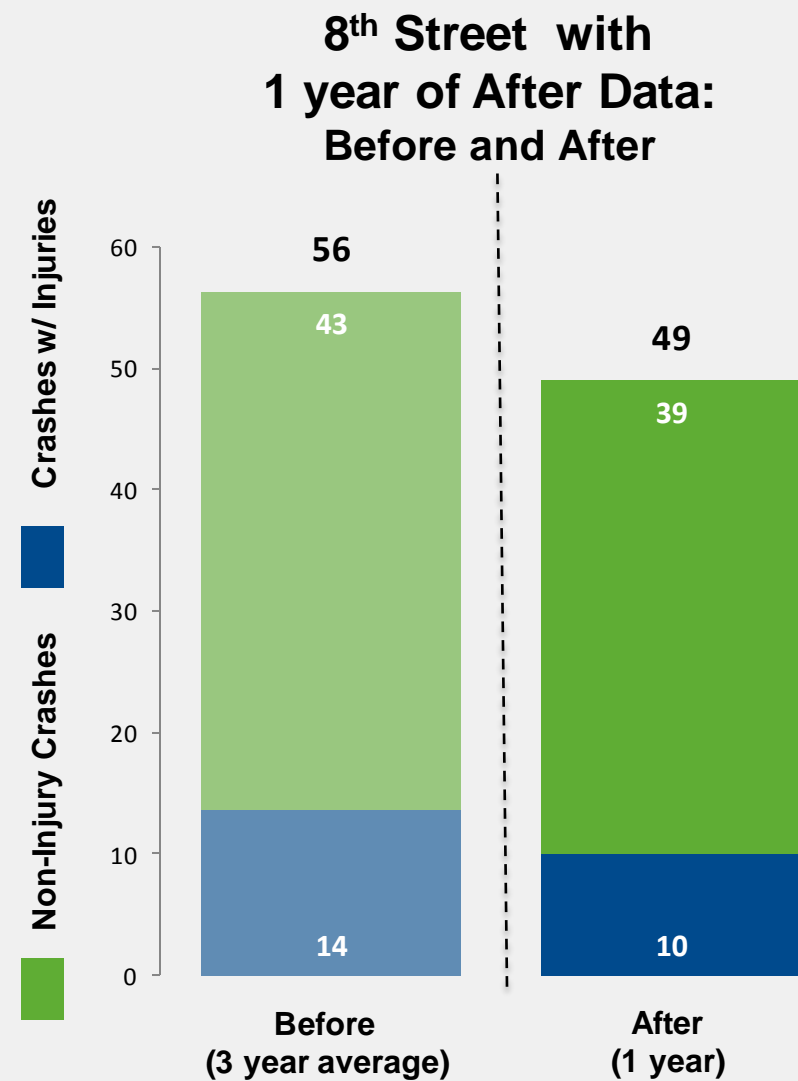
# PEDESTRIAN SAFETY PROJECT – Implemented 2015



**8<sup>th</sup> St Resurfacing**  
(6<sup>th</sup> Ave to Lafayette St)  
**October 2016**  
*Opportunity to  
Re-examine corridor*



# PEDESTRIAN SAFETY PROJECT – Preliminary Results



↓ **27% crashes with injuries**



Each before year period is the 12-month period beginning May 1 and ending April 30. The 1-yr after period is August 1, 2015 to July 31, 2016. The implementation period of May 1, 2015 to July 31, 2015 is excluded.  
Source: NYPD AIS/TAMS Crash Database

# BICYCLE NETWORK IMPROVEMENTS



**Greenwich Ave/8<sup>th</sup> Street**  
provides important  
connection from  
**Hudson St to Astor Pl**  
(Greenwich Ave Bike Improvements  
Under Investigation)

**8<sup>th</sup> St Bike Counts**  
**583 - weekday**  
**843 - weekend**  
(12-hr counts conducted in August 2016)

**Recent Projects**

- 4<sup>th</sup> Ave/Lafayette St
- 6<sup>th</sup> Ave
- Union Square

**LEGEND**

- Proposed Bicycle Route
- Existing Bicycle Facilities**
- Protected Bicycle Path
- Bicycle Lane
- Shared Lane
- Signed Route

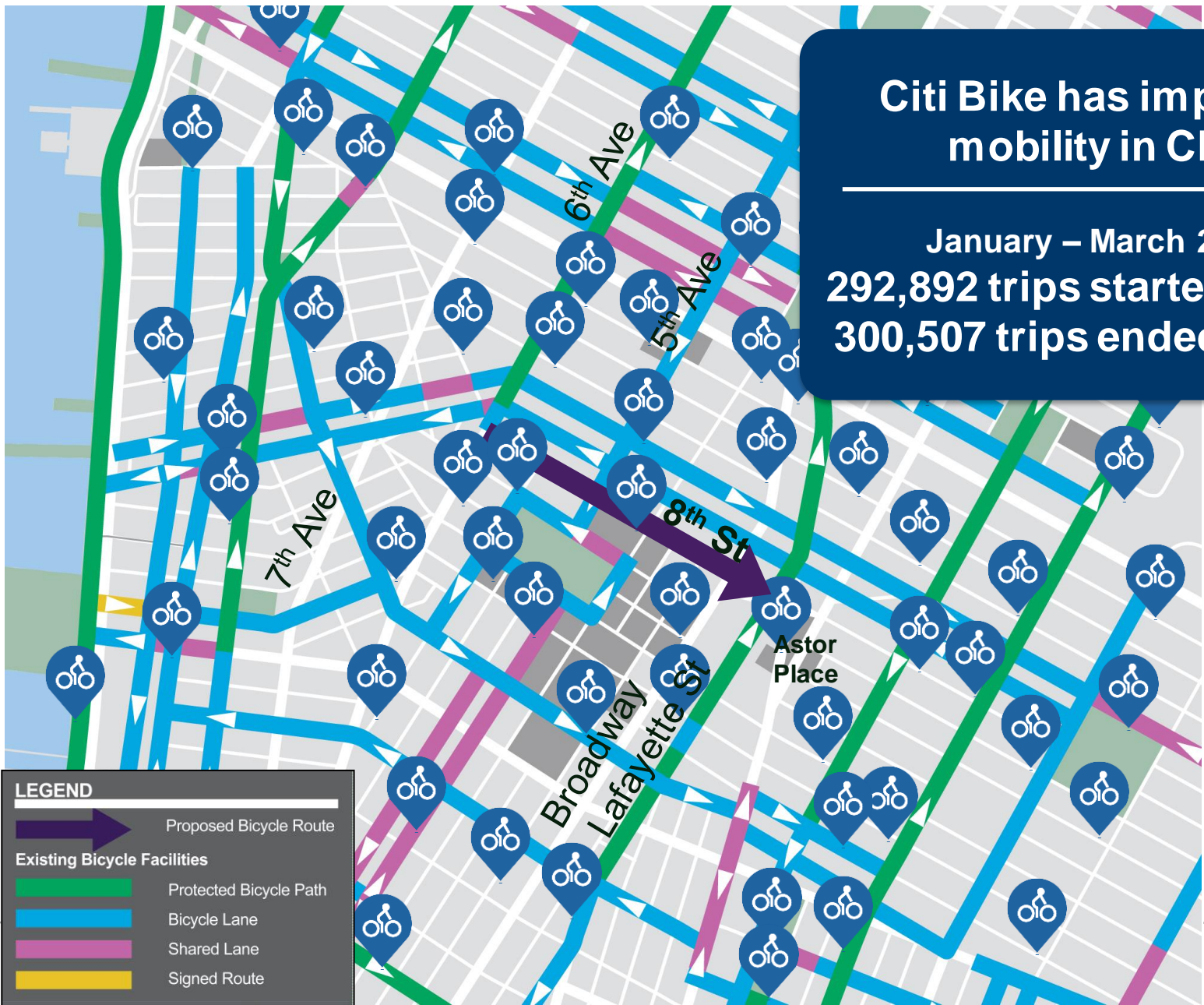
**Astor Place Reconstruction**  
to be completed Fall 2016



**Access to Citi Bike and Subway**



# SUCCESS OF CITI BIKE



**Citi Bike has improved mobility in CB 2**

---

**January – March 2016:**  
**292,892 trips started in CB 2**  
**300,507 trips ended in CB 2**

---

# PROJECT PROPOSAL

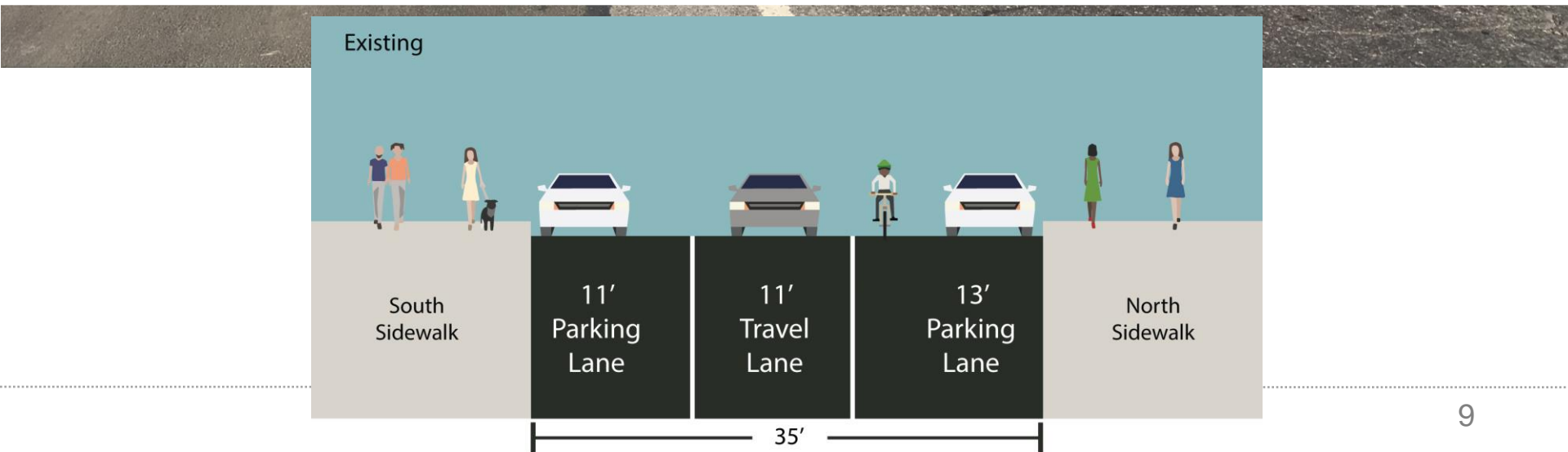
# 2



# EXISTING CONDITIONS – 8<sup>th</sup> St (6<sup>th</sup> Ave to Broadway)

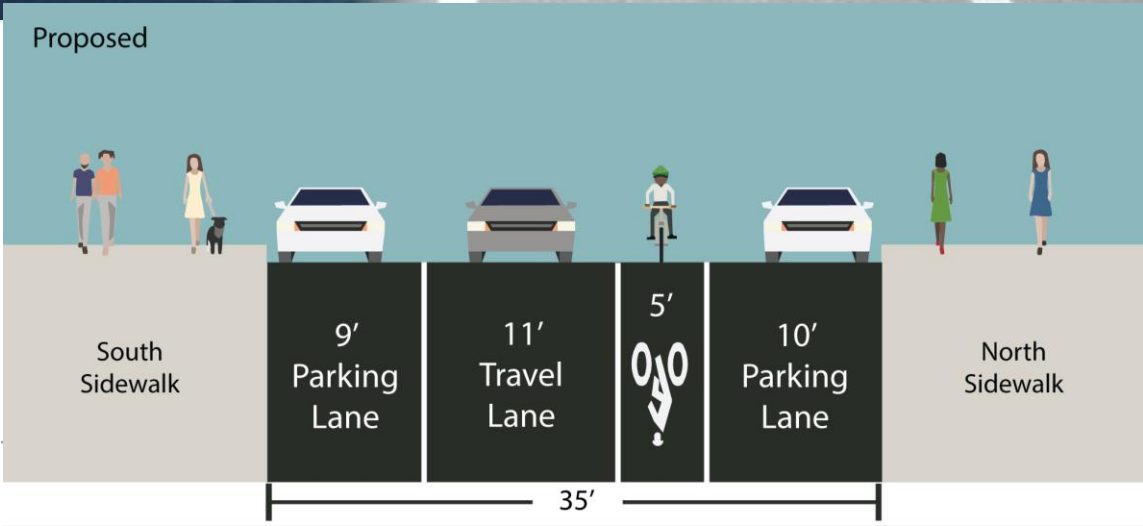


Wide  
Parking  
Lanes



PROPOSED DESIGN – 8<sup>th</sup> St (6<sup>th</sup> Ave to Broadway)

Bicycle Lane

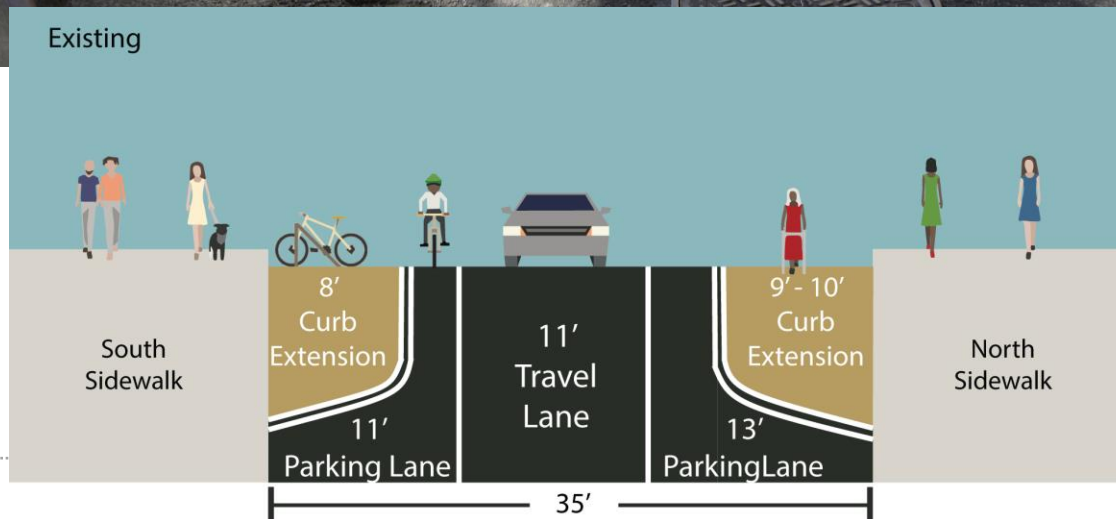




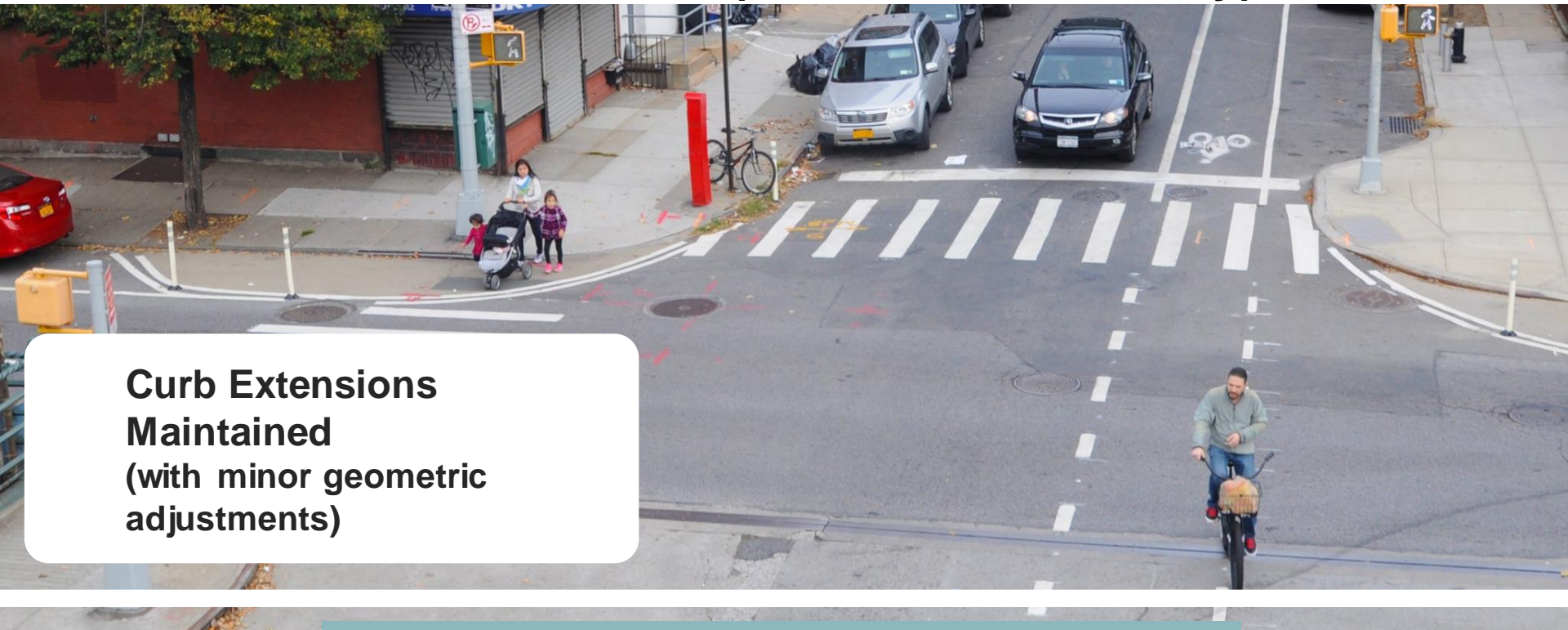
# EXISTING CONDITIONS – 8<sup>th</sup> St (6<sup>th</sup> Ave to Broadway)



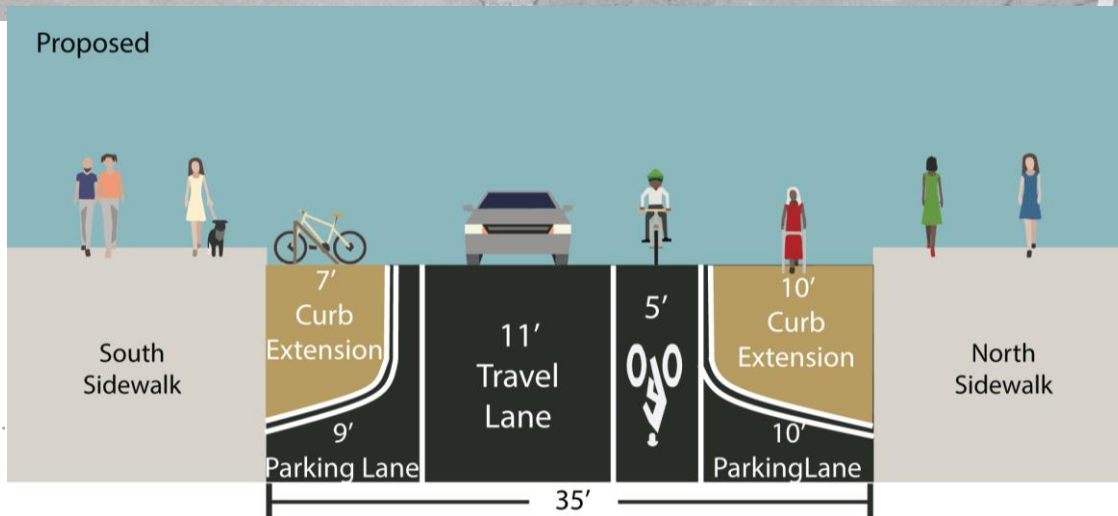
**Curb Extensions  
at key locations**



# PROPOSED DESIGN – 8<sup>th</sup> St (6<sup>th</sup> Ave to Broadway)



**Curb Extensions  
Maintained  
(with minor geometric  
adjustments)**



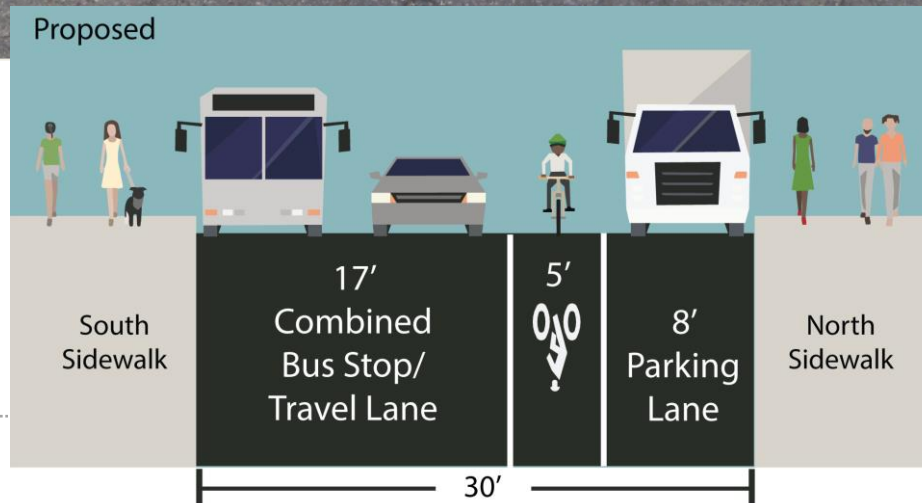
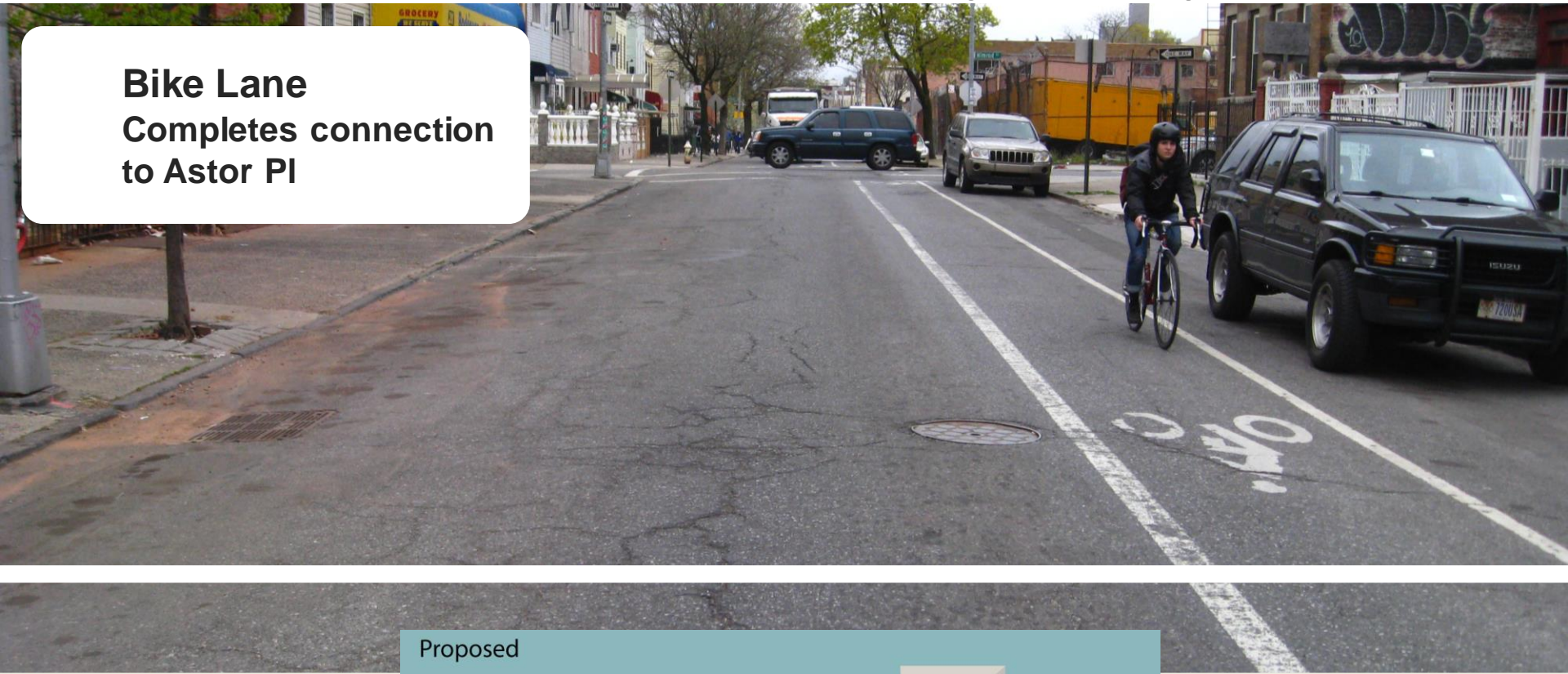


EXISTING CONDITIONS – 8<sup>th</sup> St (Broadway to Lafayette St)



# PROPOSED DESIGN – 8<sup>th</sup> St (Broadway to Lafayette St)

**Bike Lane**  
Completes connection  
to Astor Pl





---

## SUMMARY

# 3

## PROPOSED DESIGN

- Roadway will be resurfaced in October
- Creates opportunity to upgrade wide parking lane to bike lane
  - Provides clear dedicated space for cyclists
  - Complements neighborhood network expansion
  - Accommodates growing number of cyclists
  - Improves access to newly reconstructed Astor Place
- Maintains existing pedestrian improvements and vehicular mobility





# THANK YOU!

## Questions?



NYC DOT



NYC DOT



nyc\_dot



NYC DOT