

# Edgewater Road

*May 2007*

In conjunction with the completion of Riverside Park, the first waterfront park in Hunts Point in more than half a century, as well as the first Bronx River Greenway site to break ground, the Department, in conjunction with the Parks Department, developed a traffic calming and safety plan for the intersection of Lafayette Avenue, Edgewater Road and Drake Street.

In its original configuration, this intersection with its unique geometry was uncontrolled and featured no pedestrian amenities or crossings. In addition, along the eastern side of the intersection, where the entrance to the new park is, there is an at-grade rail crossings that provides service to Hunts Point, and generally operates one train a day. With the opening of the park, and the expansion of the Bronx River Greenway, both the Department and Parks Department established a plan to both beautify and improve safety for both pedestrians and motorists.

The primary components of this program, which were completed in late fall 2006, include:

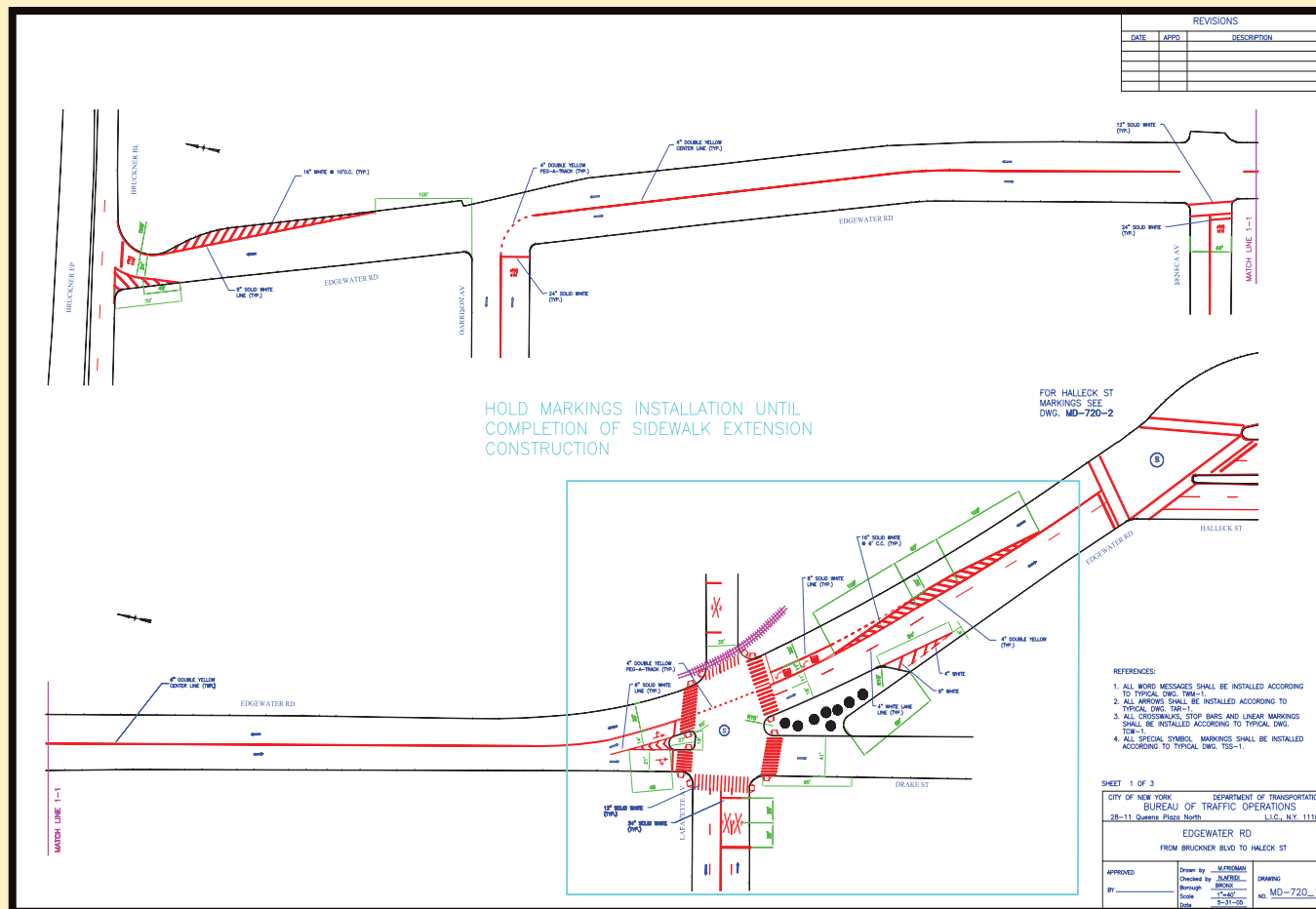
- Establishing a new roadway alignment along Edgewater Road to improve safety for all street users. This was accomplished through both curb extensions, refuge islands and roadway markings. At the southern side of the intersection, the Parks Department expanded the southern apex of Edgewater Road and Drake Street through the construction of a sidewalk extension that serves as a Green Street. This extension allows for the provision of a high-visibility pedestrian crossing to and from Riverside Parkas well as the opportunity for normalized turns from northbound Edgewater Road to Lafayette Avenue.



Aerial perspective of the intersection prior to improvements

- Construction of a pedestrian refuge and traffic island for southbound traffic. This island serves to delineate the turning and through movements and minimizes vehicular conflicts. It also provides a pedestrian refuge for the pedestrians crossing this wide portion of roadway where there is a new pedestrian crossing providing access to and from the park.
- Installation of pedestrian ramps at all new approaches to provide optimal accessibility to the park for all users.
- Improved markings for railroad crossing, as well as improved safety and operation of the railroad.

In May 2007, the Department completed these improvements with the installation of a traffic signal that improves the overall operation and safety of the intersection.



Left: Detailed design drawing of the intersection improvement including refuge, markings and signal placement.