

E. Tremont Ave

Hutchinson Pkwy to Bruckner Blvd

2015



Proposal 4



Waterbury Ave to
Bruckner Blvd

E. Tremont Ave

Middletown Rd

Ericson Pl

Lehman H.S.

E. Tremont Ave

Hutchinson River Pkwy

Waterbury Ave

4

Whittimore Ave

St. Raymonds
Cemetery

Bruckner Blvd

Existing

Waterbury Ave to Meyers St



Waterbury Ave

Puritan Ave

Baisley Ave

Whittmore Ave

Meyers St

Bruckner Blvd

St. Raymonds Cemetery

Limited sight lines at road bend

Wide road encourages speeding around cemetery

Proposed

Four to three lane conversion from Waterbury Ave to Meyers St (1/3rd of a mile)

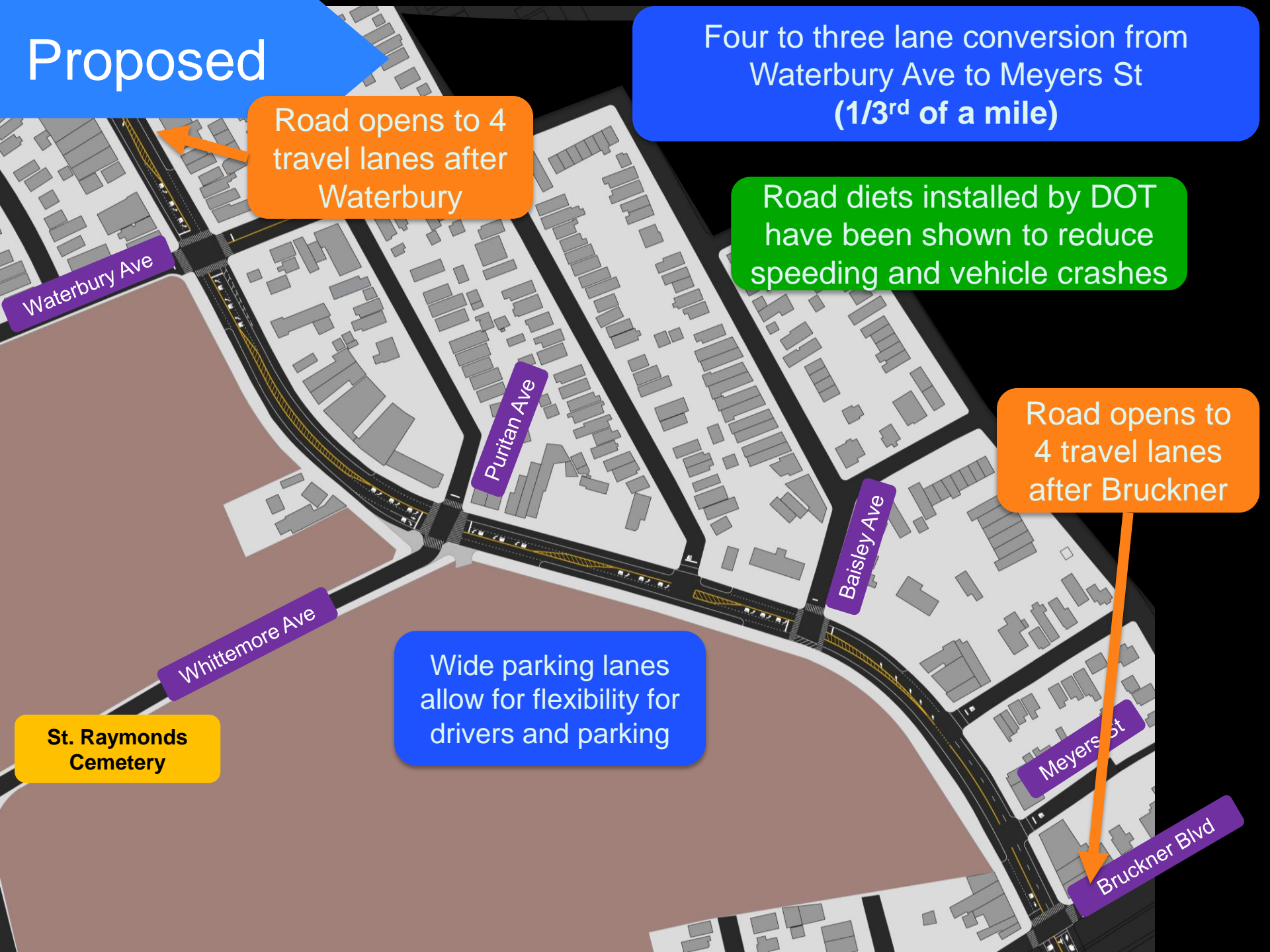
Road opens to 4 travel lanes after Waterbury

Road diets installed by DOT have been shown to reduce speeding and vehicle crashes

Road opens to 4 travel lanes after Bruckner

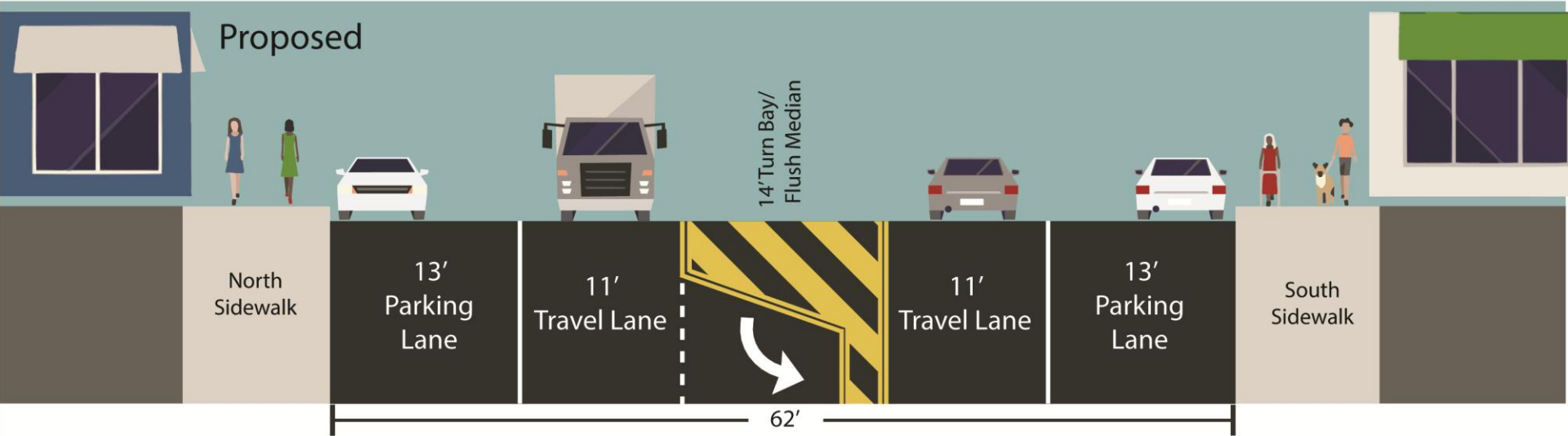
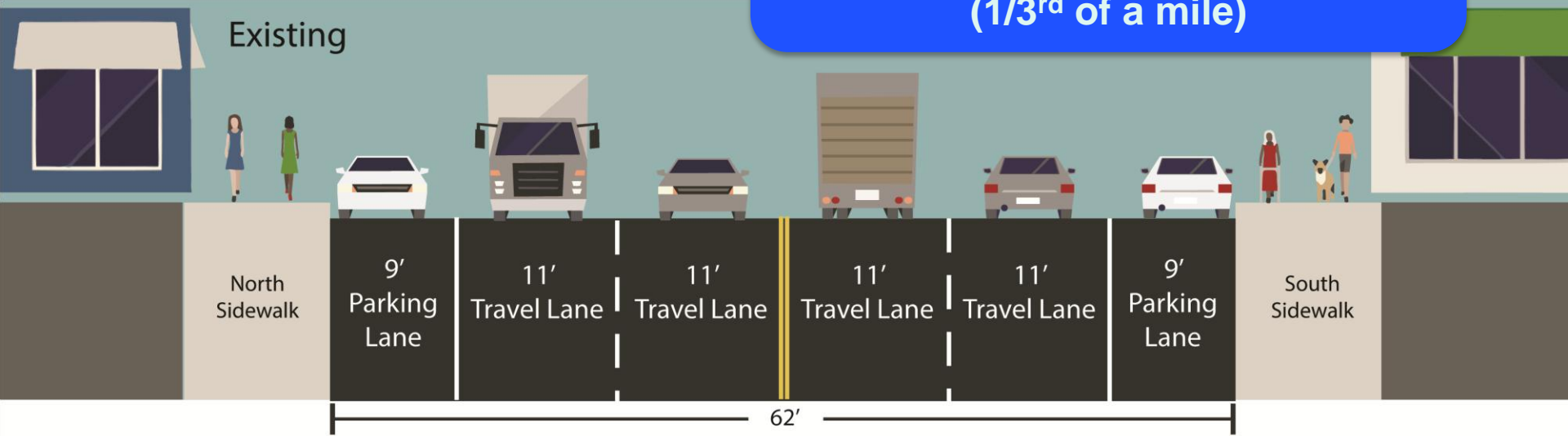
Wide parking lanes allow for flexibility for drivers and parking

St. Raymonds Cemetery

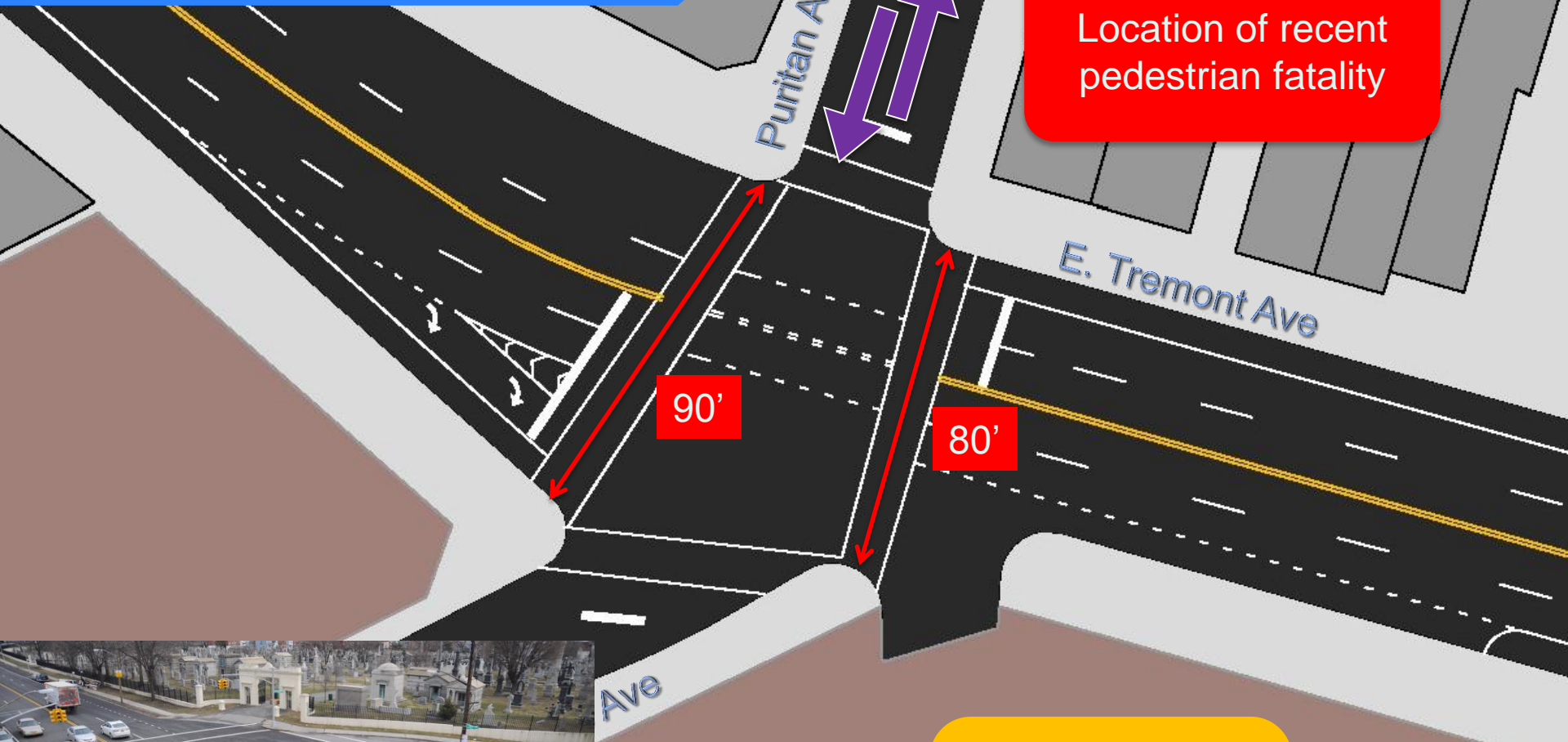


Proposed

Four to three lane conversion from
Waterbury Ave to
Meyers St
(1/3rd of a mile)



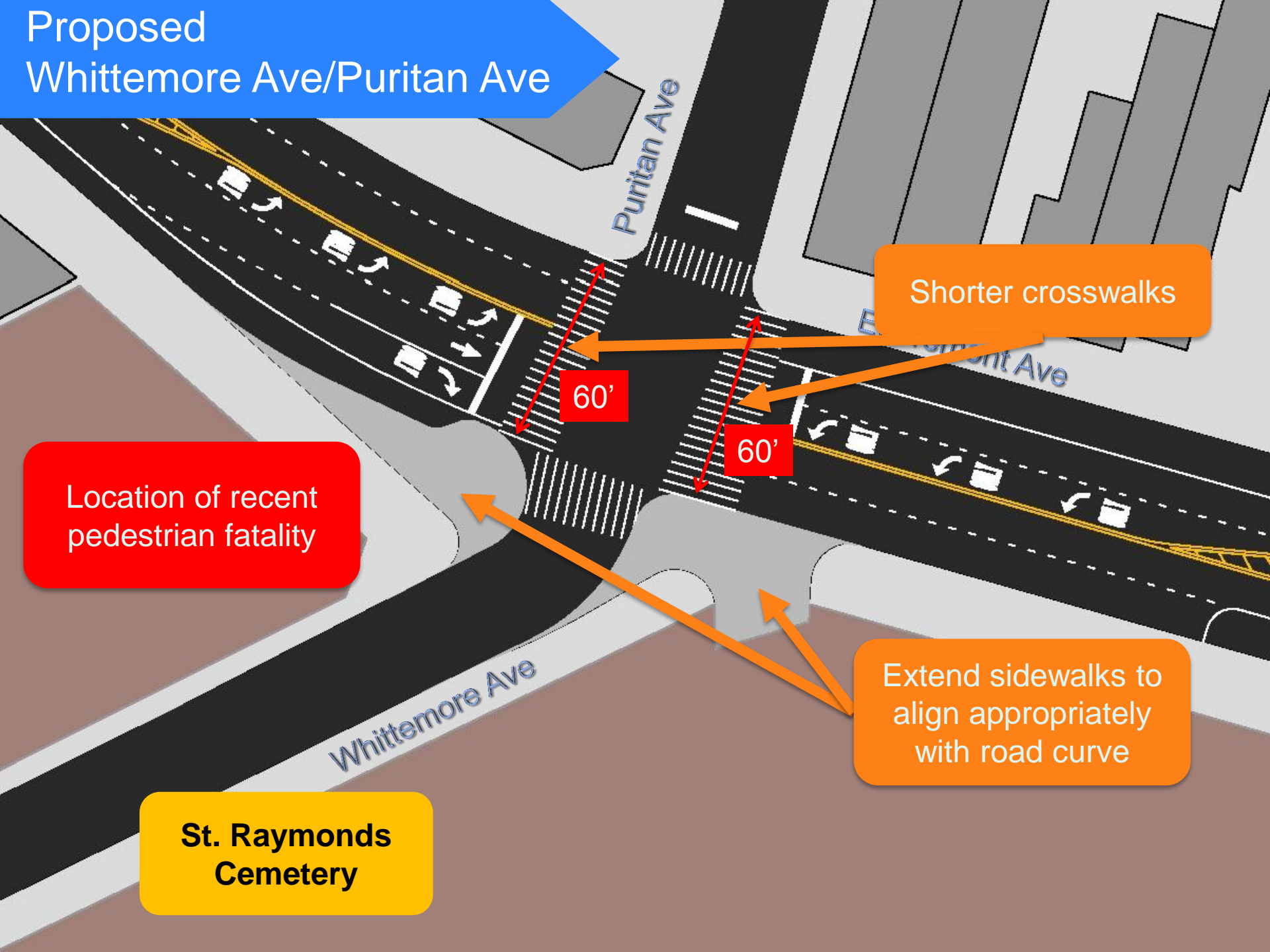
Existing Whittemore Ave/Puritan Ave



Ave

**St. Raymonds
Cemetery**

Proposed Whittemore Ave/Puritan Ave



Shorter crosswalks

60'

60'

Location of recent pedestrian fatality

Extend sidewalks to align appropriately with road curve

St. Raymonds Cemetery

Benefits

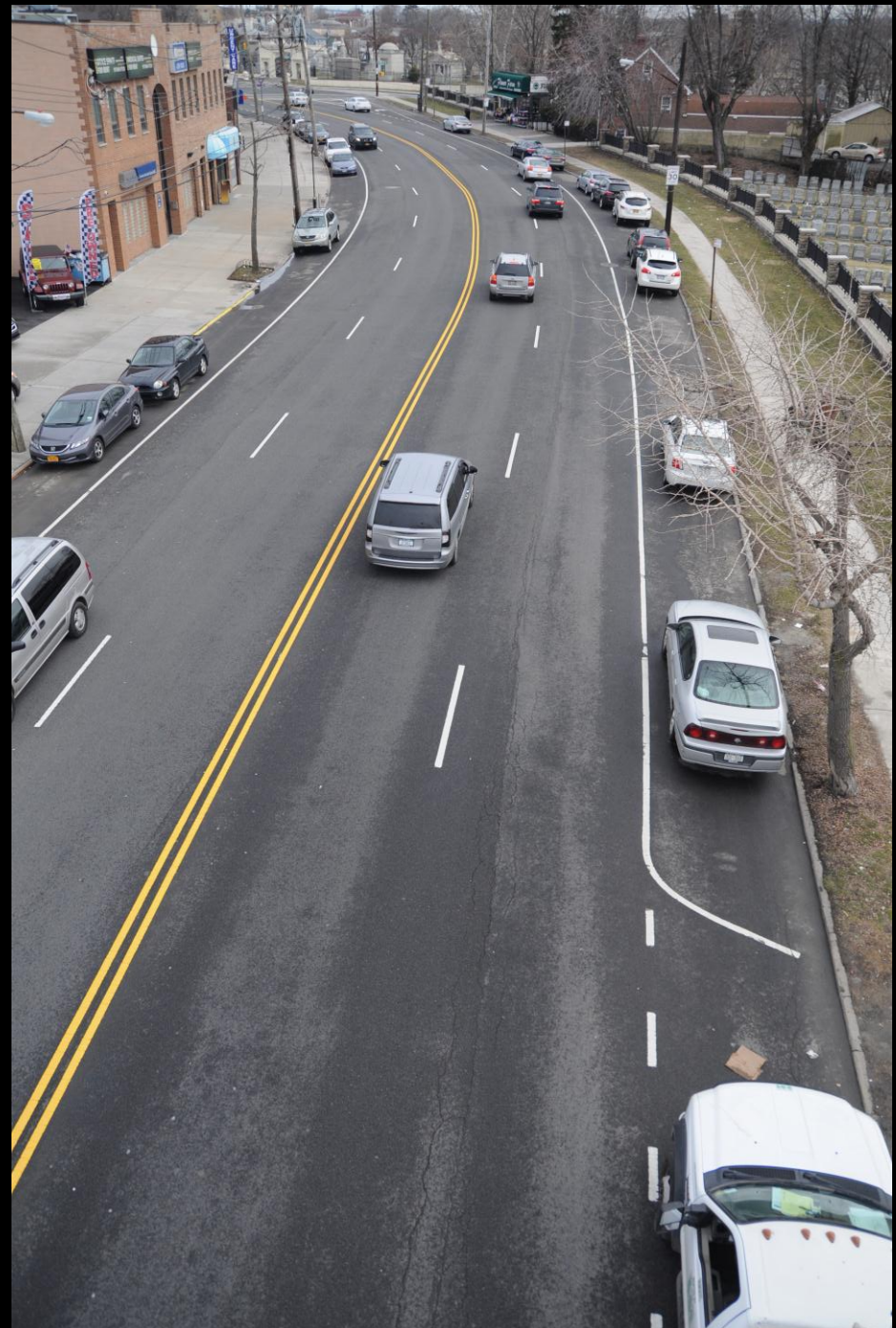
Calms traffic

Improves traffic flow and circulation

Increases pedestrian safety and comfort

Enhances walking environment

Clarifies pedestrian crossings and vehicle travel lanes



www.nyc.gov/dot

Thank
You

