

# York and Jay Streets

All Mode Network Improvements

2016



New York City Department of Transportation

Presented by the Pedestrian Projects Group January 19, 2016 to the Brooklyn Community Board 2 Transportation Committee

# Project Area & Background

- DUMBO has abnormal street grid conditions due to the Manhattan Bridge and BQE structures
  - atypical pedestrian access
  - challenging sight lines
- Walkthrough with community December 2013
- Request from BID February 2014 for bicycle and pedestrian improvements at 12 locations
  - 8 addressed by other units
  - 4 became proposal (2 remain)
- Correspondences with CM Levin's office in May 2014
- Includes elements of Transportation Alternatives' Jay St Reimagining
- Nearby Capital Project – presented July 2013

## 2016 Update:

- Front and Pearl location incorporated into nearby Capital Project
- York and Washington project completed Fall 2015



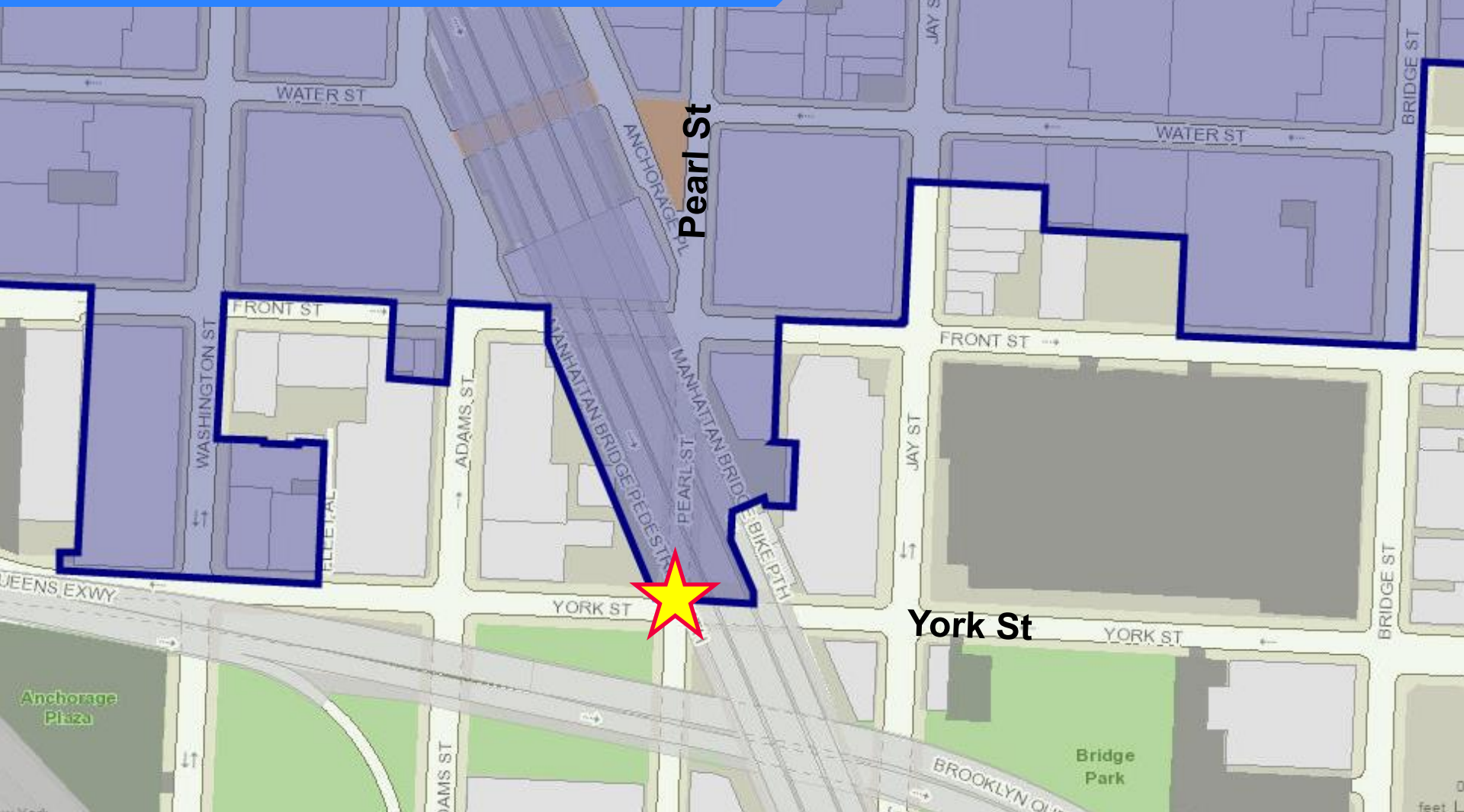


# Rapid Response Toolkit

- Pavement markings
- New signage
- Concrete or cobble curb extensions
- Granite paver crosswalk treatment
- Signals



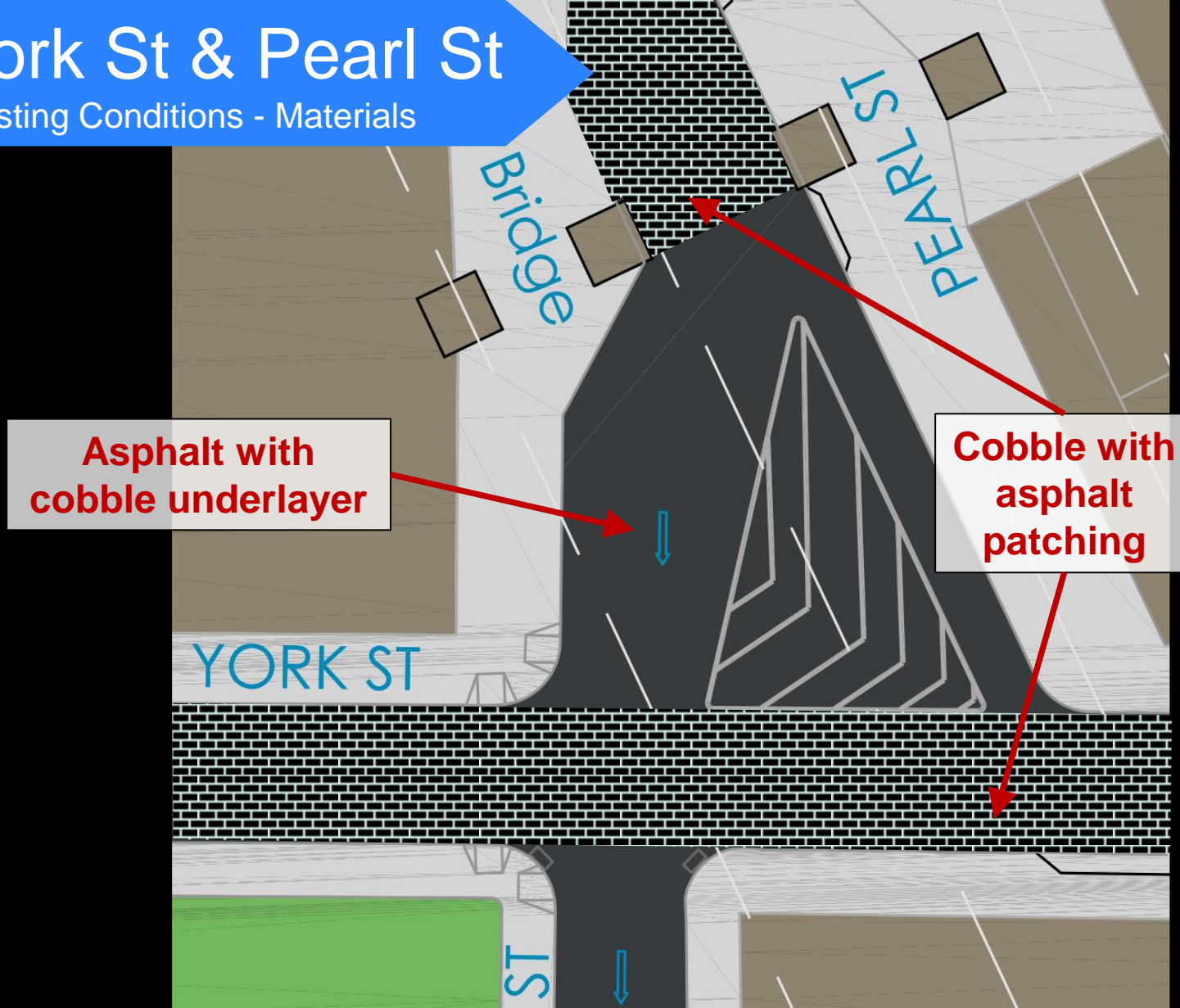
# Historic District Boundary



 DUMBO Historic District

# York St & Pearl St

Existing Conditions - Materials



Community request to repair  
condition of cobblestone on York St

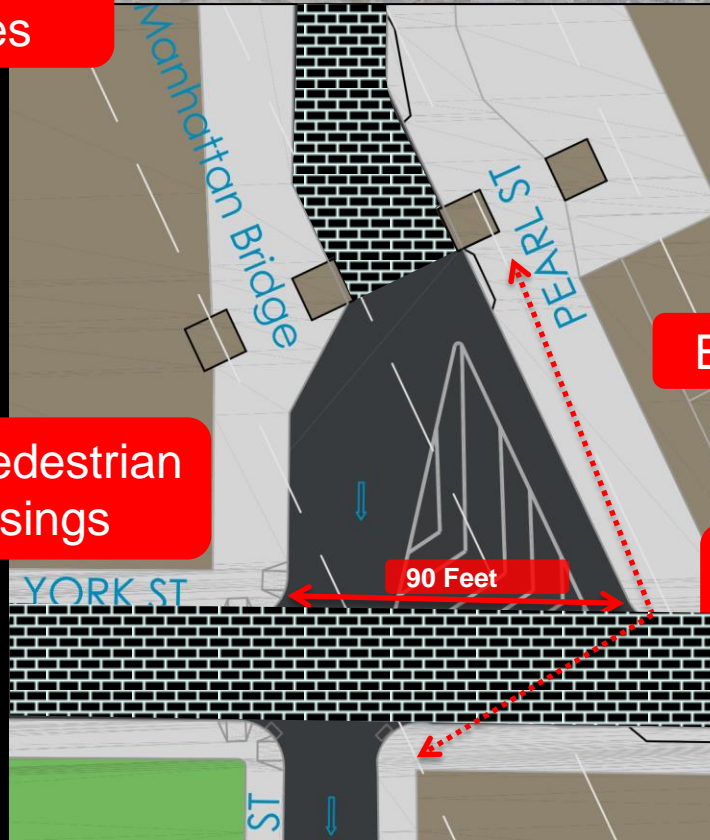


# York St & Pearl St

## Existing Conditions



Uneven mix of asphalt and cobblestones



Wide pedestrian crossings

Excessive roadbed

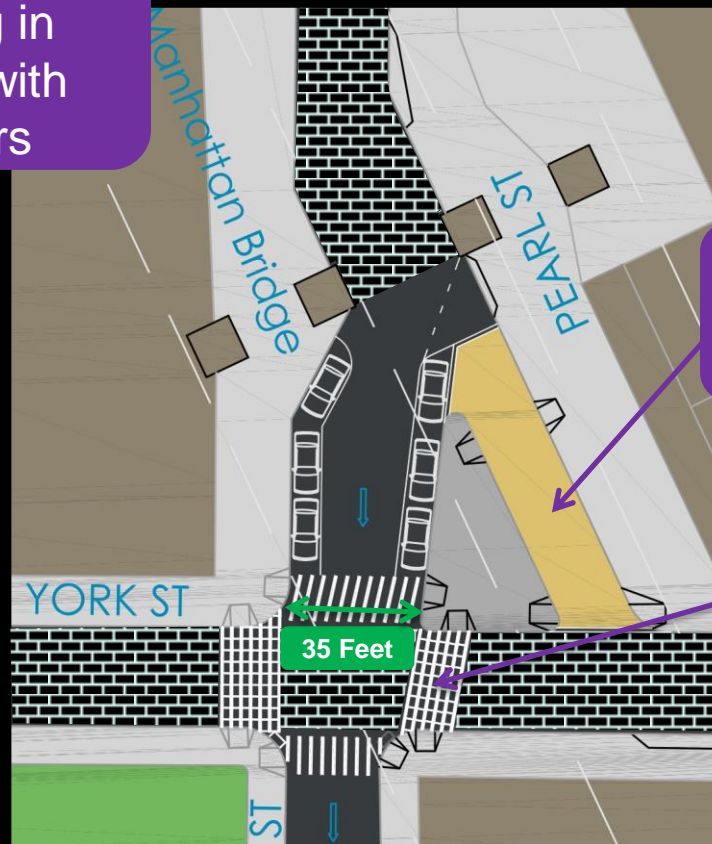
Indirect pedestrian path

# York St & Pearl St

Previously Proposed 2015 Plan



DOT sponsored programming in coordination with local partners



Extended sidewalk space in paint and concrete

New granite paver crosswalks



# York St & Pearl St

Revised 2016 Proposal



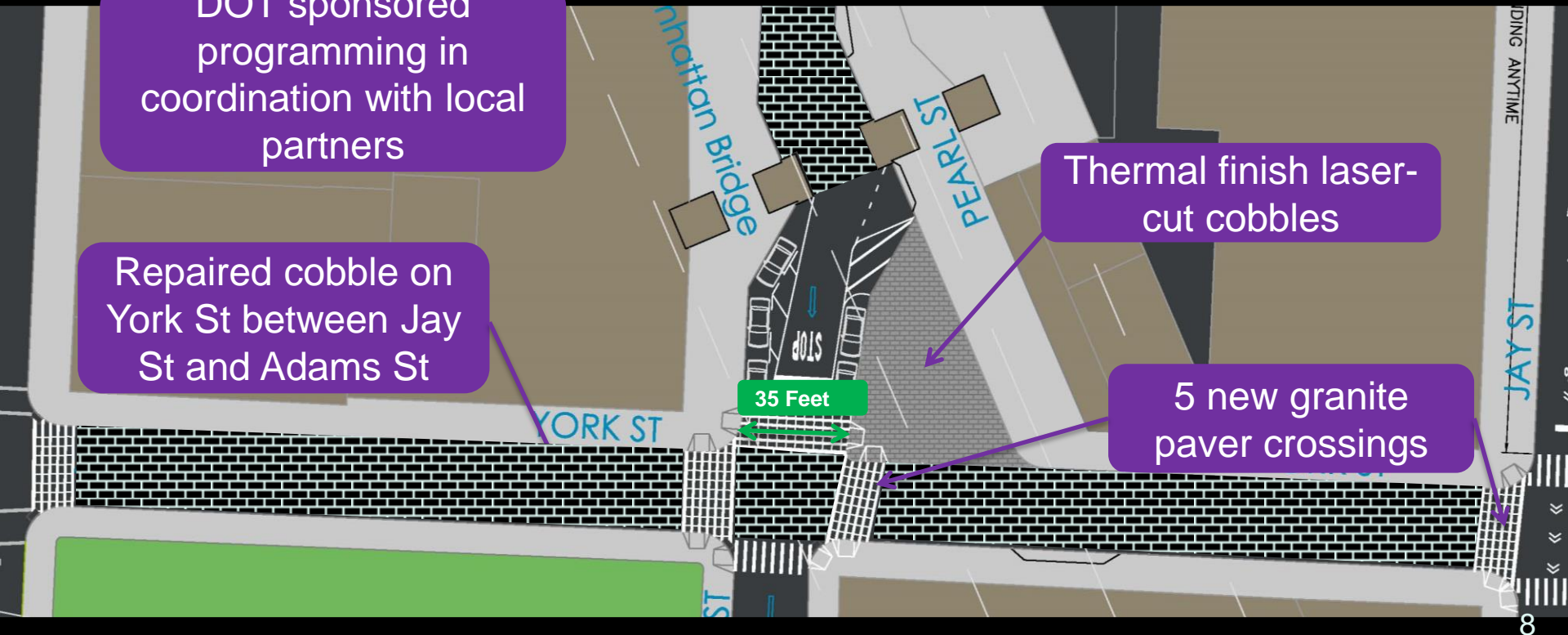
DOT sponsored programming in coordination with local partners

Repaired cobble on York St between Jay St and Adams St

Thermal finish laser-cut cobbles

5 new granite paver crossings

35 Feet



Note: contingent upon LPC approval



# York St & Pearl St

## Material Specs

Laser cut thermal  
finish cobbles

Granite curbs

Standard Highway Specifications (Nov 1, 2010)

### 6.04 – Granite Block Wearing Course

#### 6.04.3. MATERIALS

Materials shall comply with the following requirements:

Granite Block--**Section 2.06**, Types 1 or 2, except that no block shall be less than six (6") inches long, four (4") inches wide and five (5") inches deep.

Whereby:

#### **SECTION 2.06 - Block, Granite**

Blocks shall be of the following sizes:

	Grade 1 -- Standard Five (5") inch			Grade 2 -- Redressed		
	Dimensions, Inches	Tolerance, Plus or Minus, Inches		Dimensions, Inches	Tolerance, Plus or Minus, Inches	
Length . . . . .	9 to 10-1/2	1/2"	1"	8-1/2	2-1/2"	2-1/2"
Width . . . . .	4 to 4-1/2	1/2"	0"	4	1/2"	3/4"
Depth . . . . .	4 to 5	1/2"	0"	4-1/2	1"	3/4"

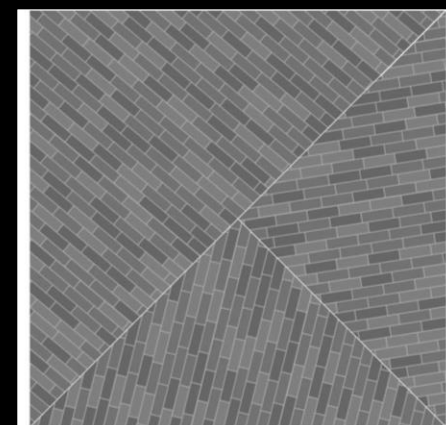
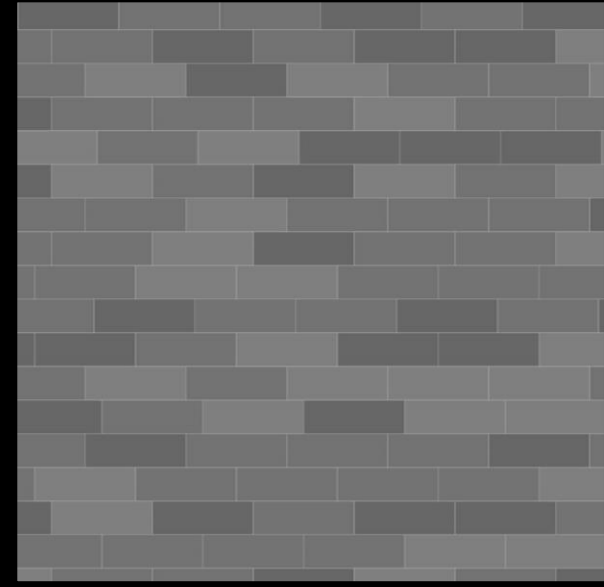
Each delivery of Grade 1 Blocks shall average not less than ten (10") inches in length.

The maximum sizes for Grade 1 and Grade 2 granite blocks are therefore as follows:

Grade 1: 11 x 5 x 5.5

Grade 2: 11 x 4.5 x 5.5

Material consistent with the planned  
treatment of Pearl St Plaza



#### **1 SIZE 3 COLORS - RANDOM COURSE**

4"x12"x4" pavers  
sand swept joints

virginia mist thermal finish  
st. johns black thermal finish  
impala black thermal finish

# York St & Pearl St

Rendering: Before





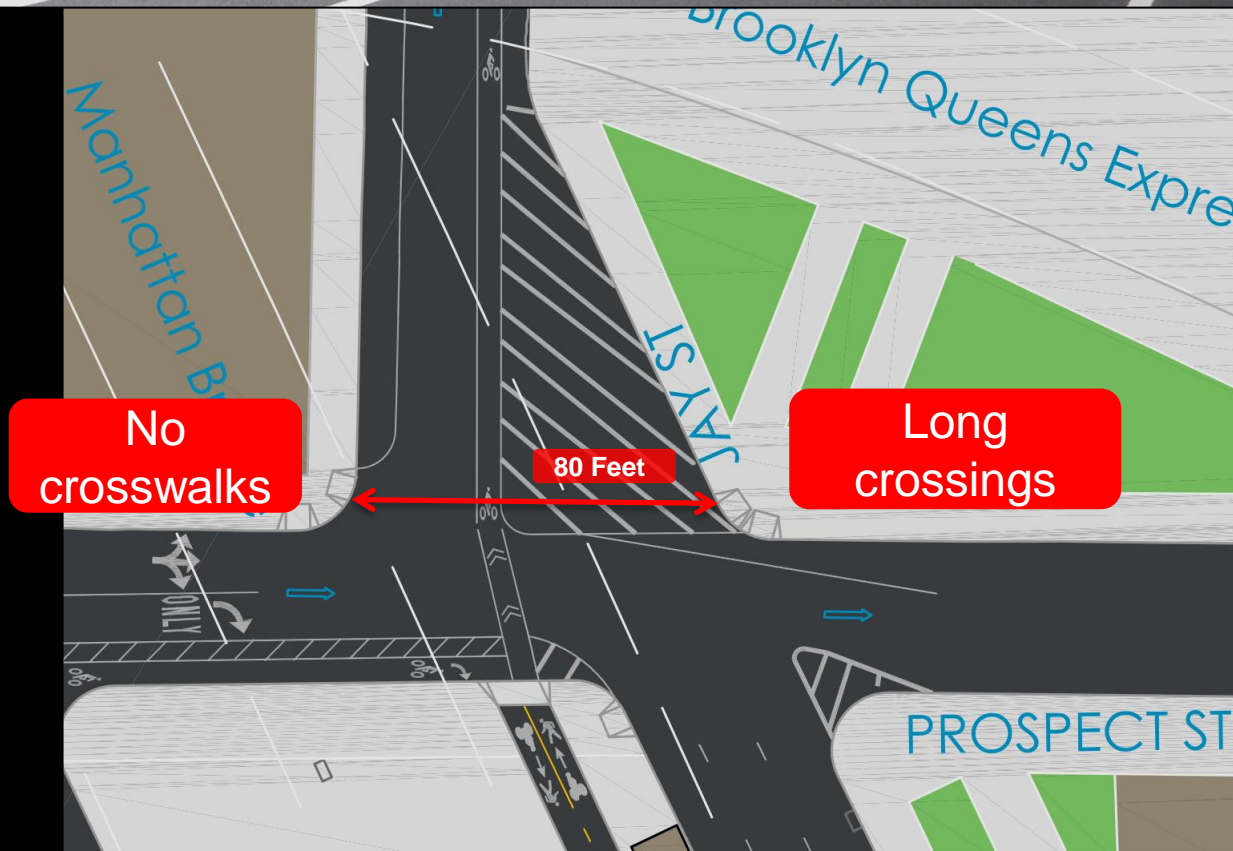
# York St & Pearl St

Rendering: After



# Jay St & Prospect St

## Existing Conditions





# Jay St & Prospect St

Previously Proposed 2015 Plan



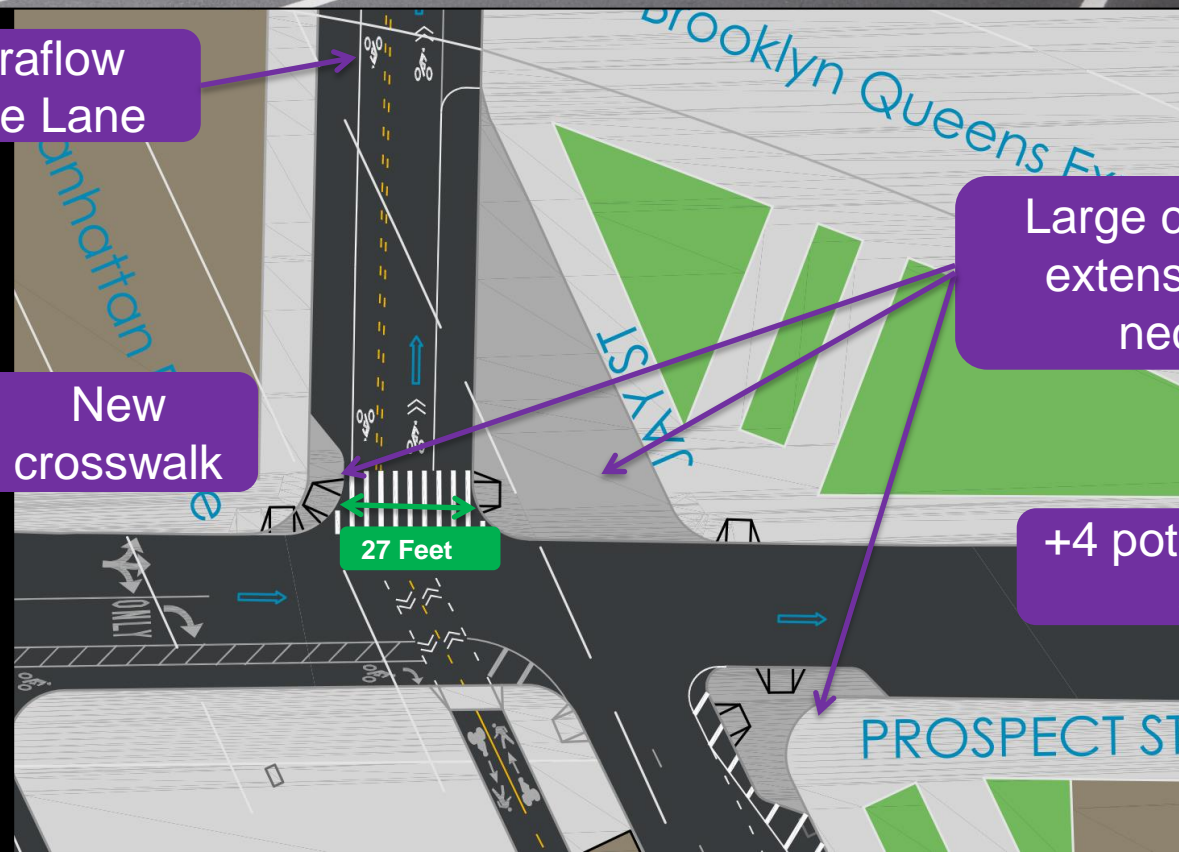
Contraflow  
Bicycle Lane

New  
crosswalk

27 Feet

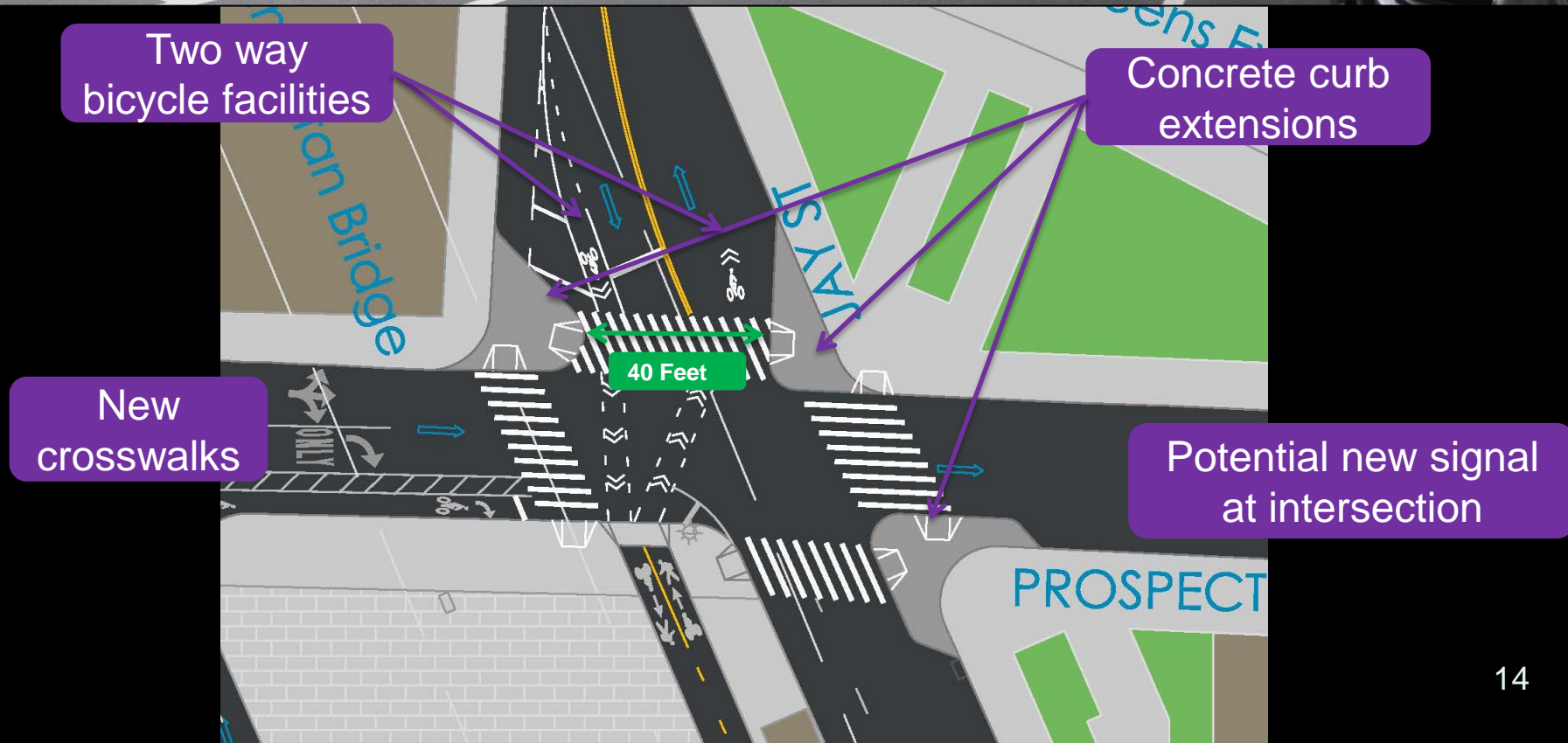
Large concrete curb  
extension and two  
neckdowns

+4 potential parking  
spaces



# Jay St & Prospect St

Revised 2016 Proposal



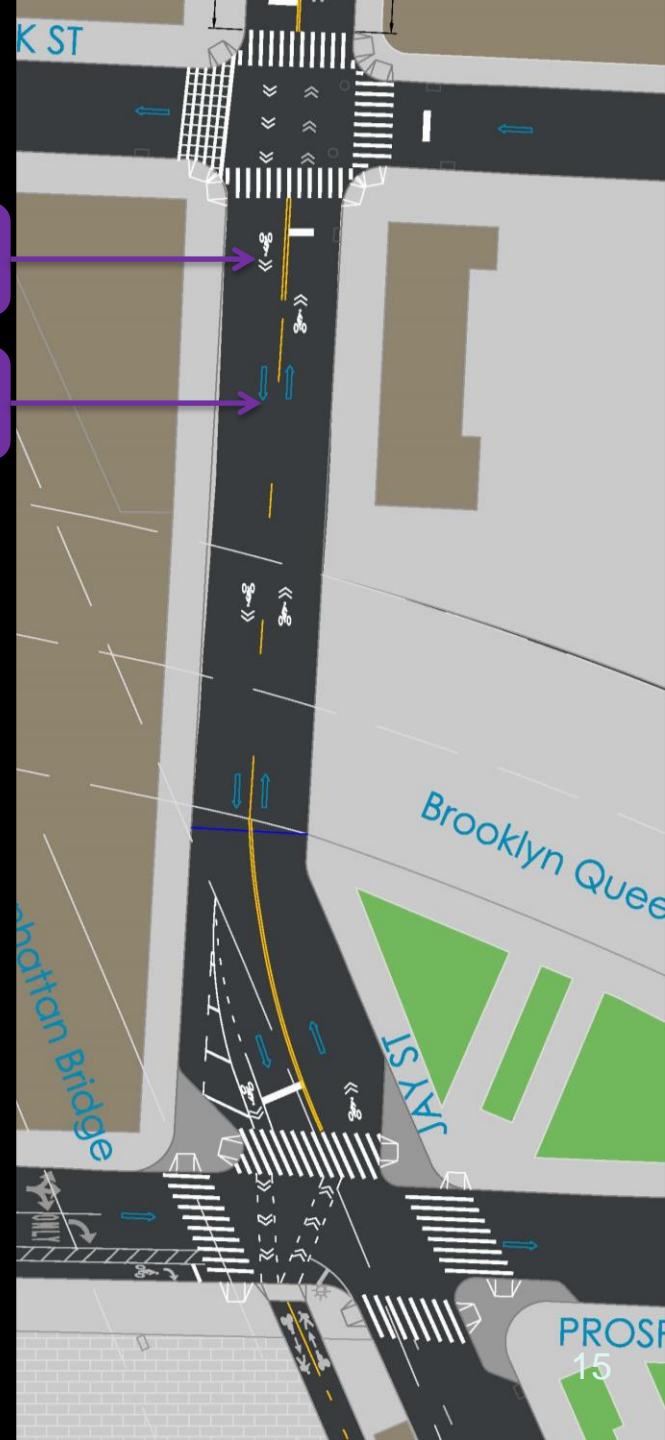


# Jay St & Prospect St

Revised 2016 Proposal

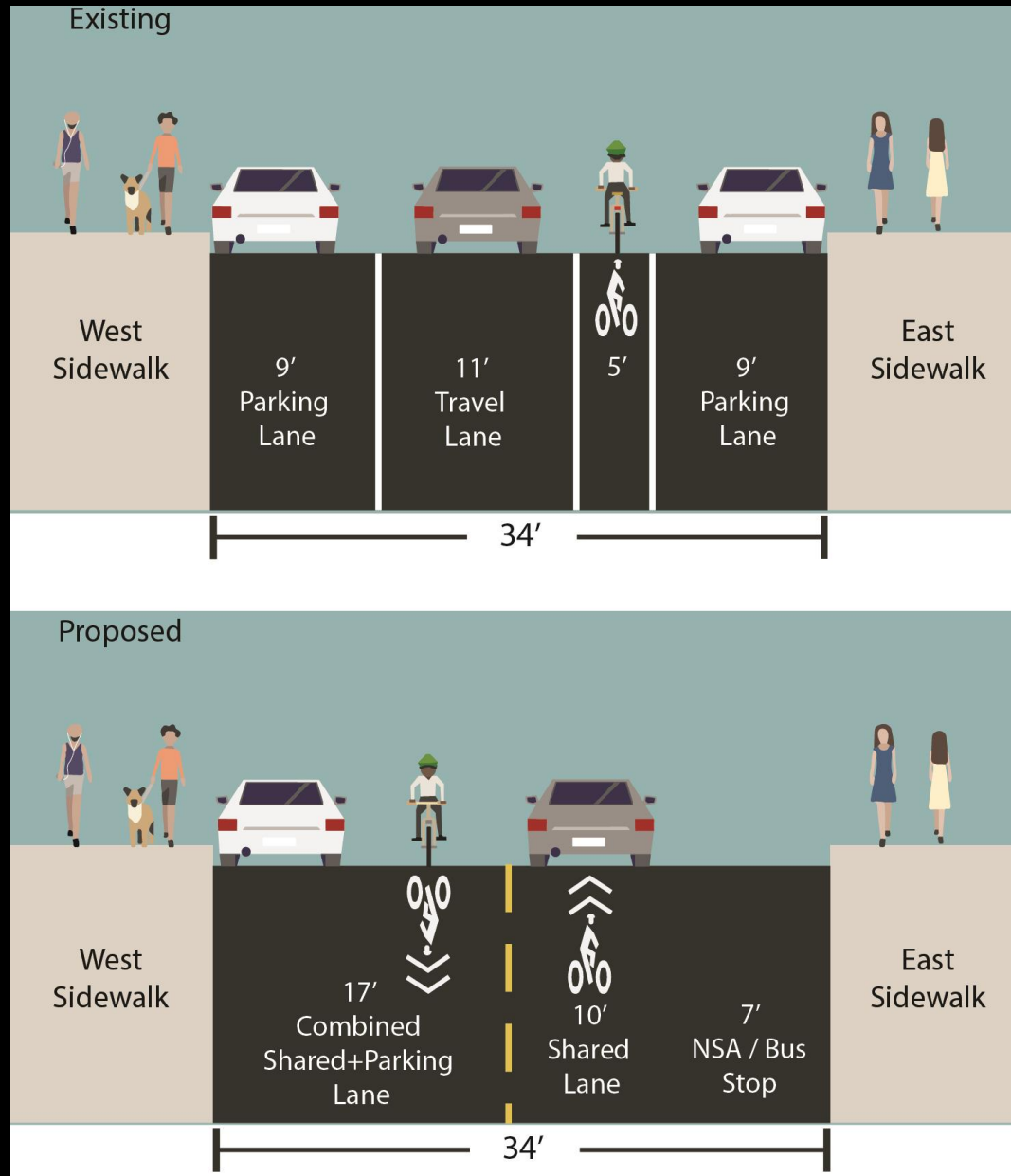
Two way  
bicycle facilities

Two way  
vehicle lanes



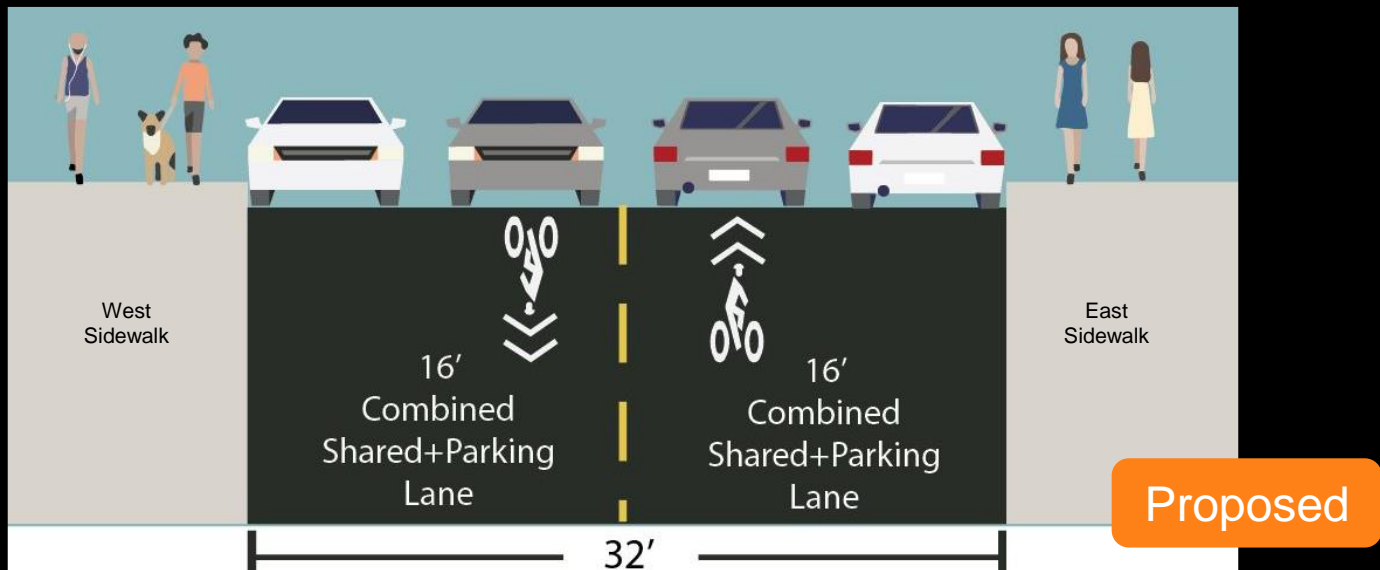
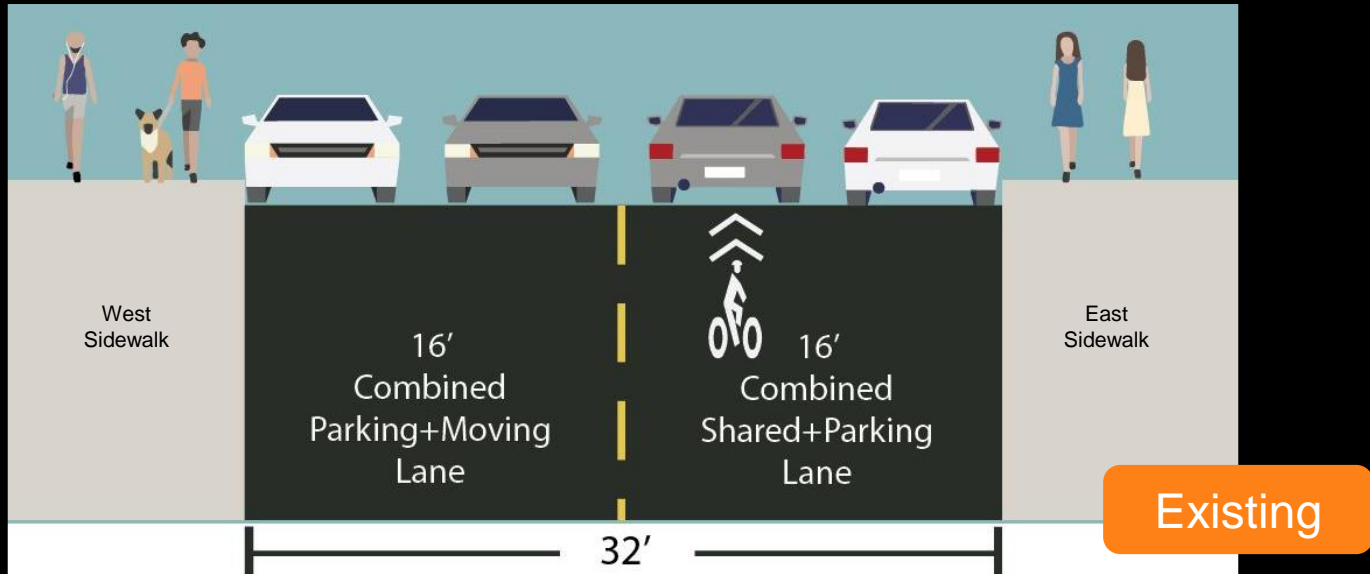
# Jay St between Prospect and York

Revised Proposed 2016 Section





# Jay St between York St and John St



# Benefits

1. Improves connectivity and safety for pedestrians, bicycles, and vehicles
2. Provides programmable pedestrian space
3. Reflects historic character of neighborhood

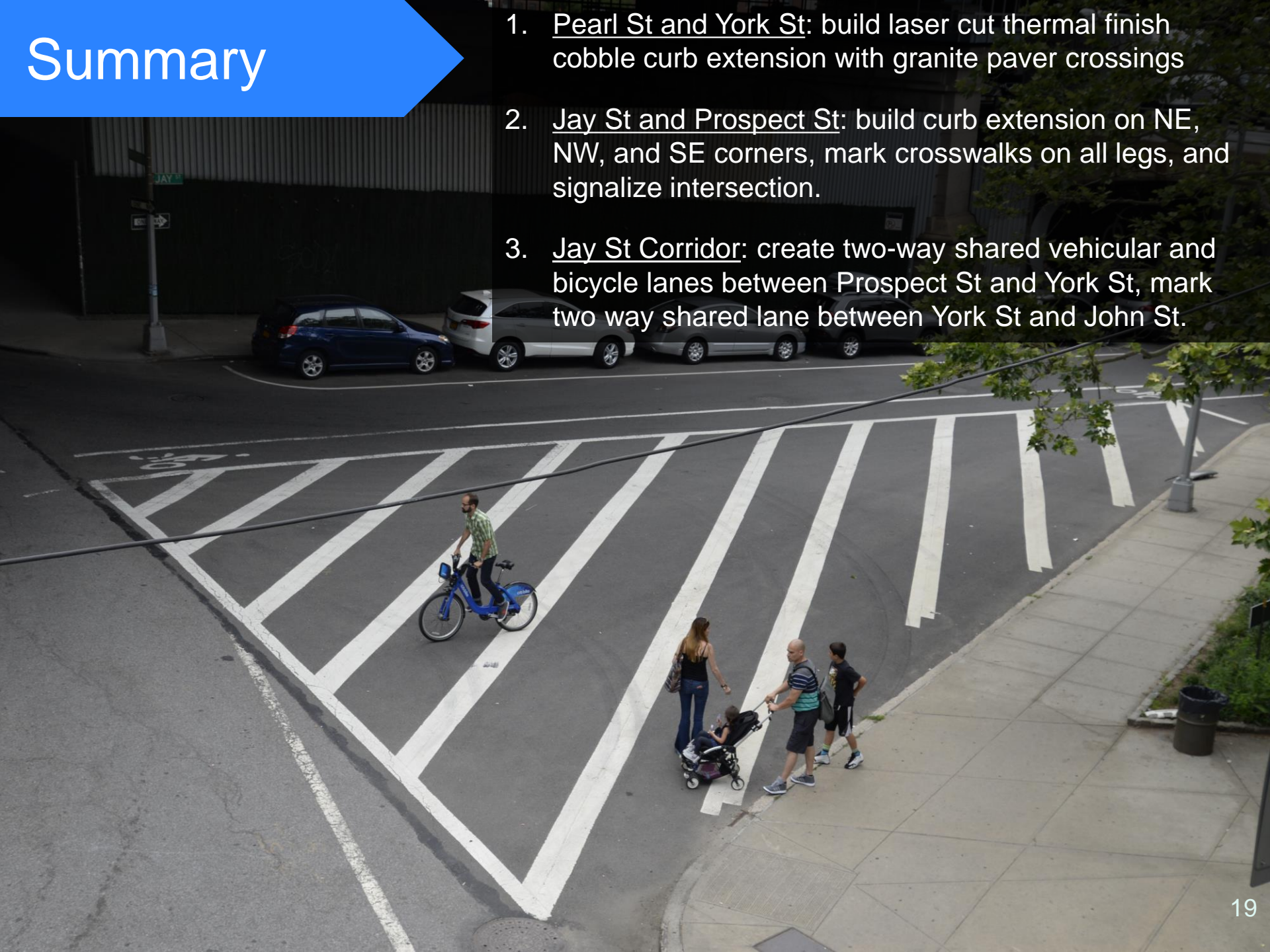


Supported by DUMBO BID



# Summary

1. Pearl St and York St: build laser cut thermal finish cobble curb extension with granite paver crossings
2. Jay St and Prospect St: build curb extension on NE, NW, and SE corners, mark crosswalks on all legs, and signalize intersection.
3. Jay St Corridor: create two-way shared vehicular and bicycle lanes between Prospect St and York St, mark two way shared lane between York St and John St.







[www.nyc.gov/dot](http://www.nyc.gov/dot)

Thank  
You