



CYPRESS HILLS STREET SAFETY IMPROVEMENTS

Queens CB 5 Transportation Committee

April 25, 2017



PRESENTATION OVERVIEW

- **Background**
- **Proposal**
- **Summary**



Cypress Hills St at Mt Neboh Cemetery, facing south

Cypress Hills St Overview

Background

- **104th Precinct requested traffic calming and protection for bike lanes**
- *Cypress Hills St bike route is part of greenway network connecting parks*
- *Few destinations along corridor: cemetery entrances, bus stops, substandard pedestrian environment*



Cypress Hills St

Cypress Hills St Overview

Safety Issues

Cypress Hills St (Cooper Ave – Jackie Robinson Pkwy), QN
Injury Summary, 2010-2014 (5 Years)

	Total Injuries	Severe Injuries	Fatalities
Pedestrian	4	0	0
Bicyclists	0	0	0
Motor Vehicle Occupant	99	6	2
Total	103	6	2

Fatalities, 01/01/2010 – 04/10/2017: 4



Cypress Hills St is a High Crash Corridor, ranking in the top third of Queens corridors

Cypress Hills St Overview

Project Goals

- Improve safety for all road users
- Enhance pedestrian access to Machpelah and Mt Neboh Cemeteries
- Increase bicycle access to parks, greenway route
- Improve pedestrian/bus rider experience

Project Proposal

1 Cooper Ave to Jackie Robinson Pkwy

- Upgrade Existing Bike Route to Protected Bike Lanes,
- Fill in missing gaps in bike route
- Install new pedestrian crossings
- No parking loss

2 Cypress Hills St to Highland Park

- Improve Park Connection for pedestrians and bike riders



Upgrade Existing Bike Lanes

Cooper Ave – Jackie Robinson Pkwy

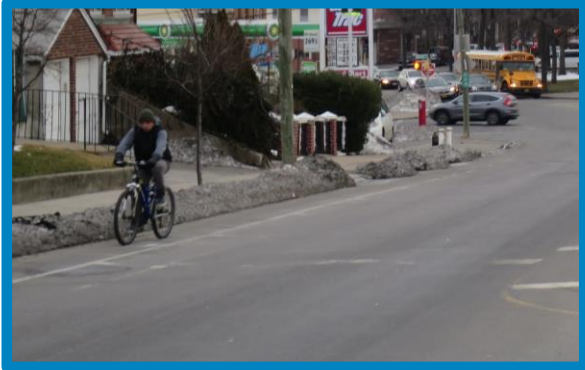
1

Existing Bike Route

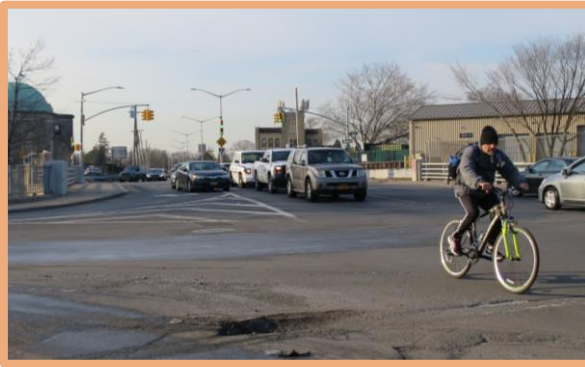
Signed Route



Buffered Bike Lanes



Signed Route



Proposal
Upgrade Bike Lane Design and
Complete Network Gaps

West side of Cypress Hills St

Protected Bike Lanes



East side of Cypress Hills St

Protected Bike Lanes





Cypress Hills St near Mt Neboh Cemetery, facing north

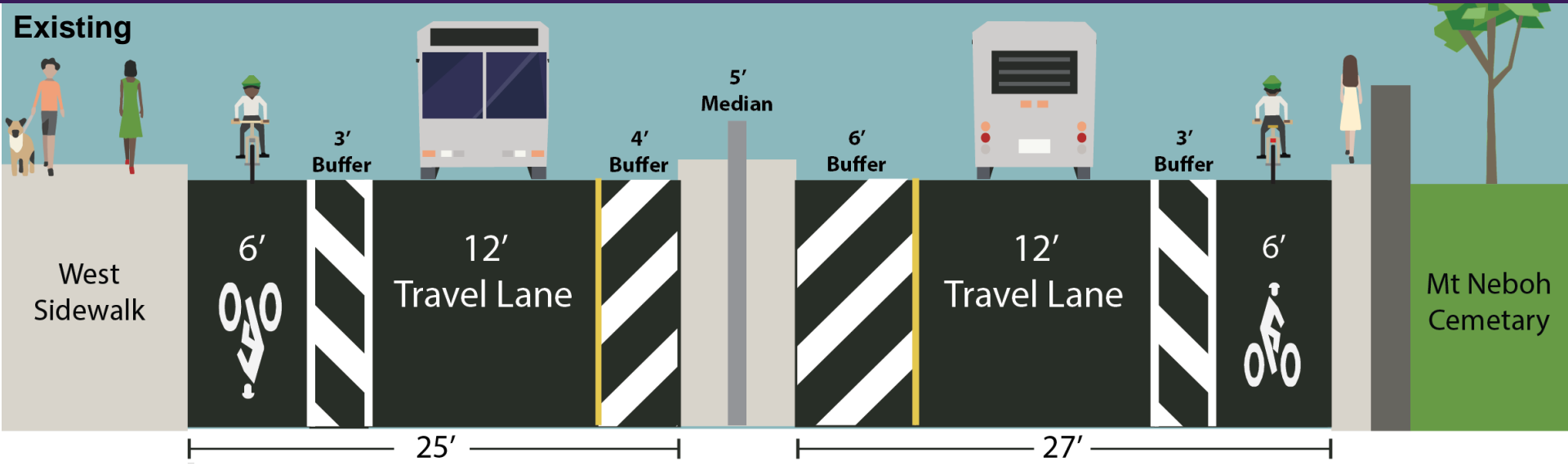


Cypress Hills St Cooper Ave – Jackie Robinson Pkwy

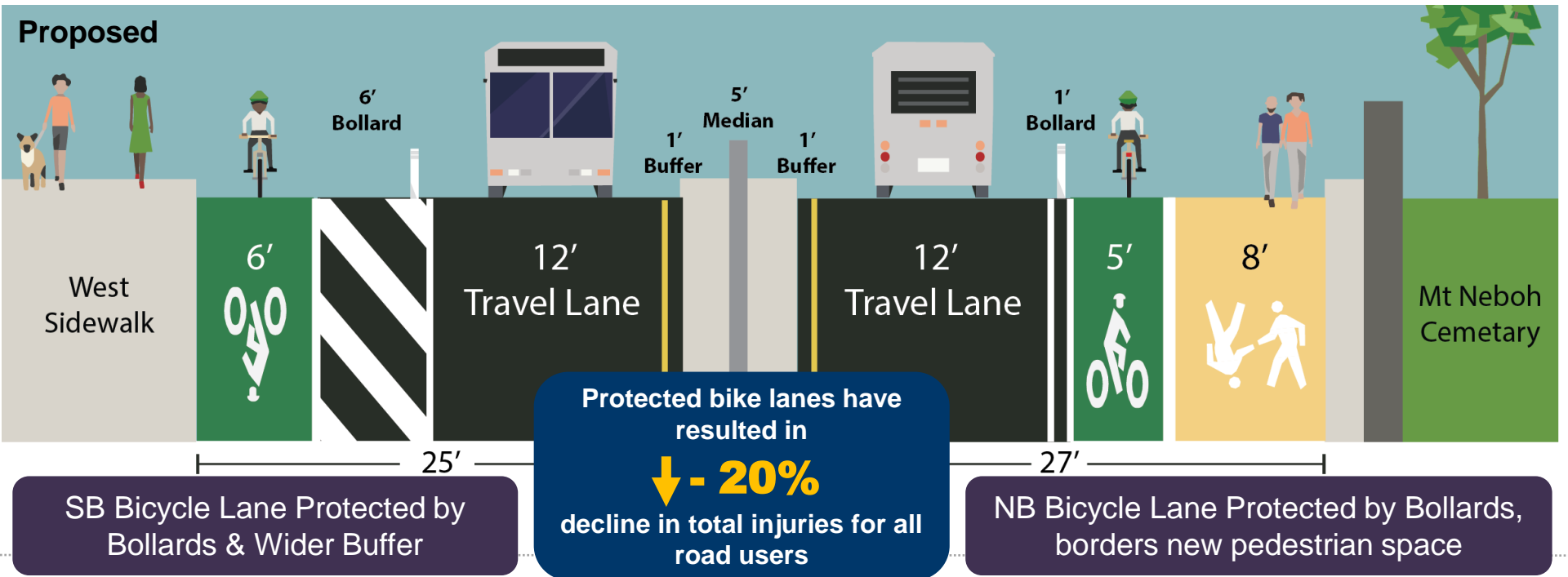
- 1 vehicle lane each direction
- Curved roadway, blind summits, and high vehicle speeds
- Existing but incomplete buffered bike lanes - 65 daily cyclists
- Little to no sidewalk on east side
- B13 Bus route, 5 stops on each side within 0.5 mile

1 Cypress Hills St Cooper Ave – Highland Park

Existing

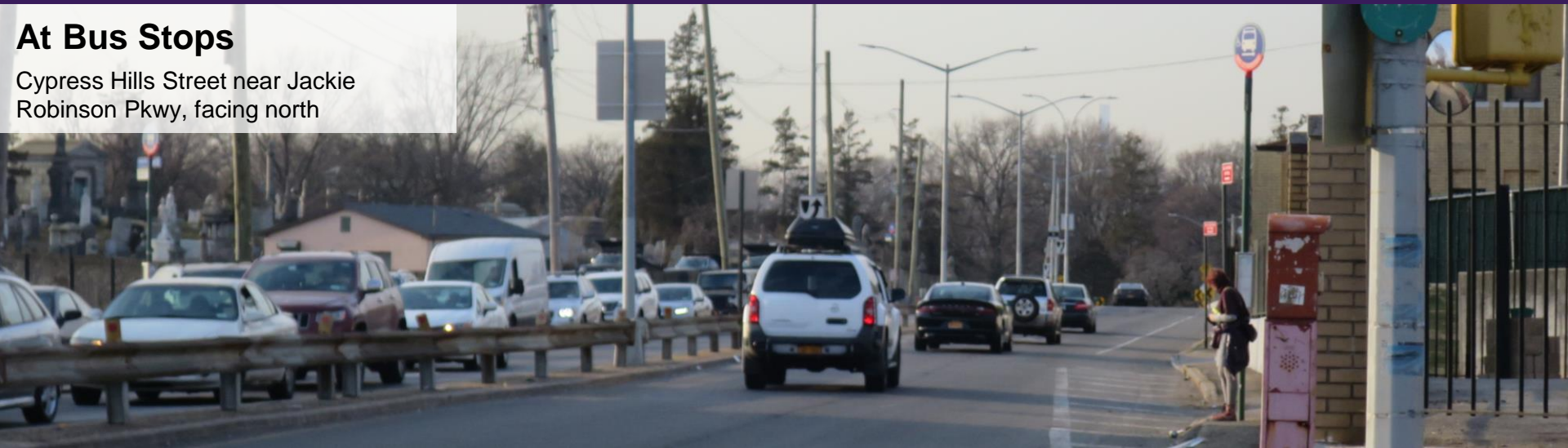


Proposed

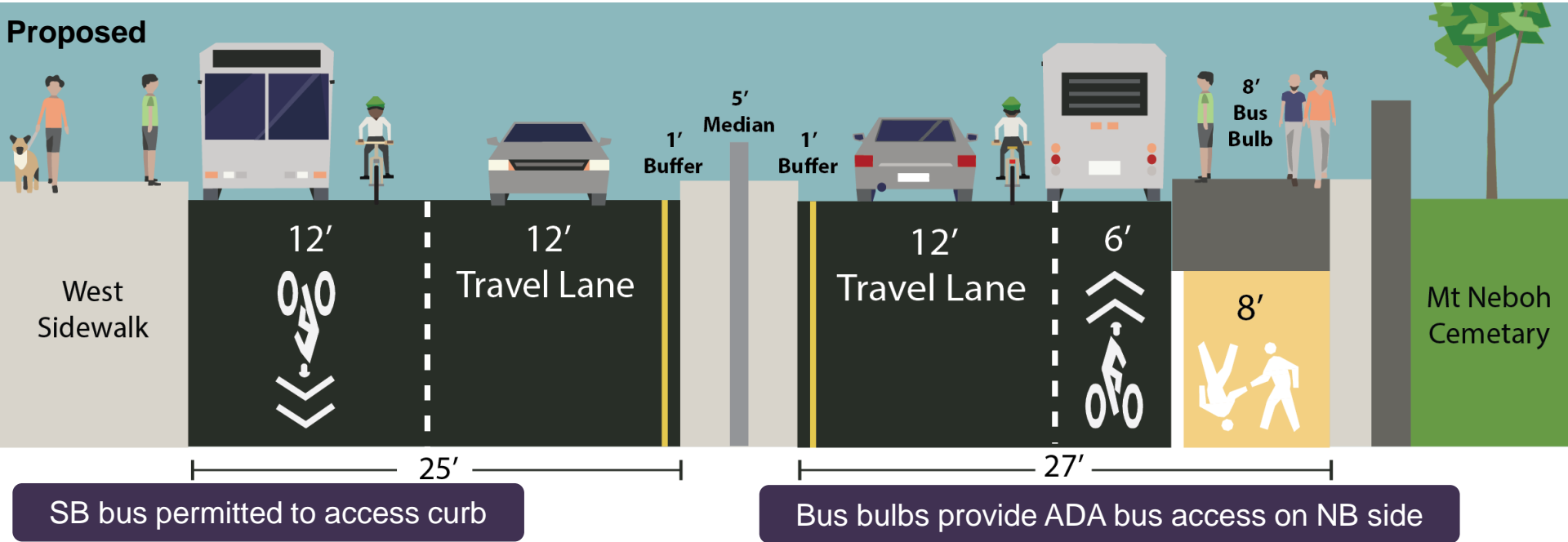


At Bus Stops

Cypress Hills Street near Jackie Robinson Pkwy, facing north



Proposed



B13 Bus Stop Consolidation

Existing:

- 3 stops within 870 feet (3 blocks) between 80th Ave and Cooper Ave
- Substandard waiting and drop-off space

Proposed:

- Consolidate stop at 78th Ave
- ADA improvements at NB stops
- Access to Highland Park and residential neighborhoods improved

Existing Stops to remain

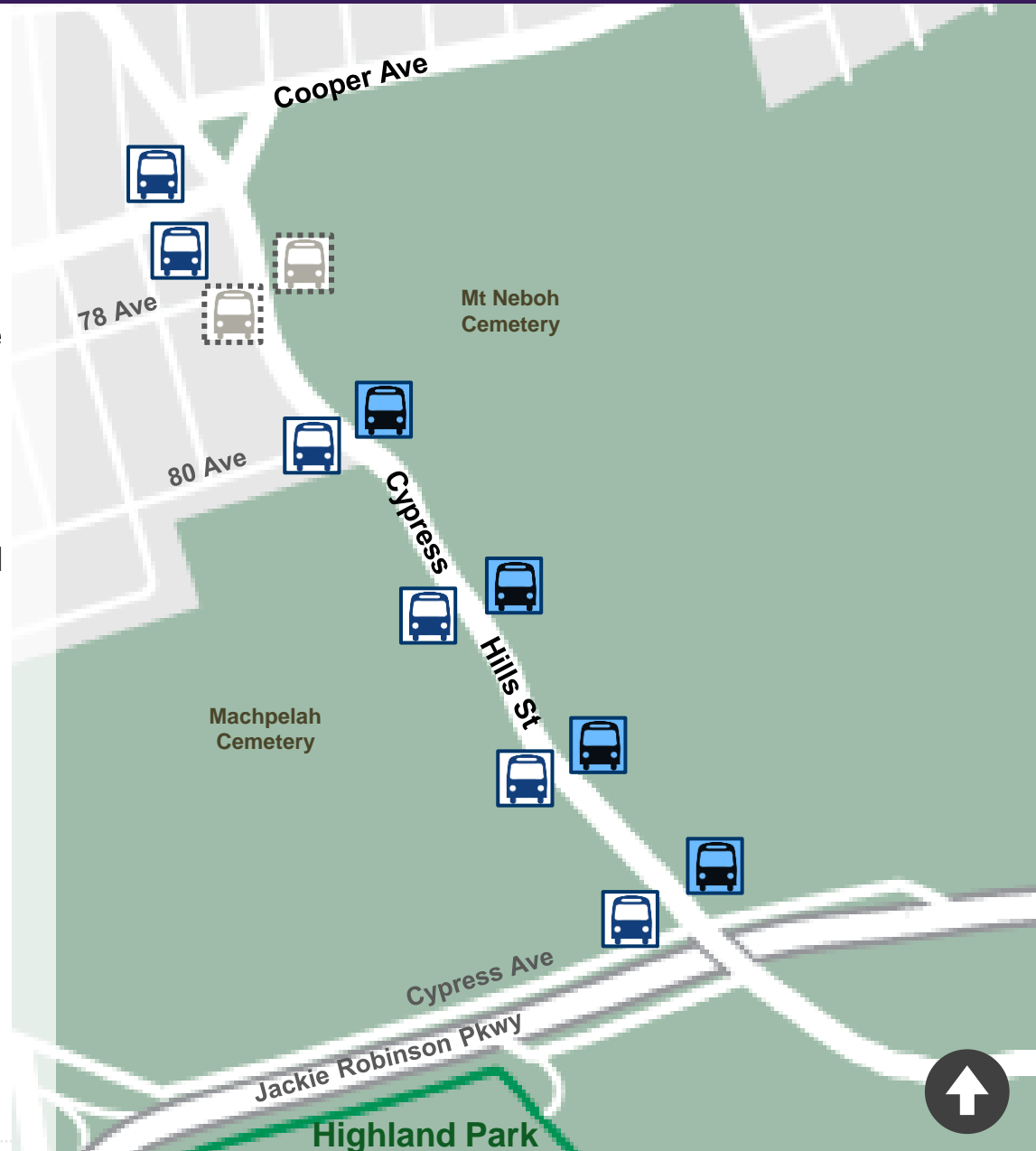


Curbside Stop



Bus Bulb

Existing Stops to remove



Safety Improvements 78th Ave



Cooper Ave



78th Avenue

Existing



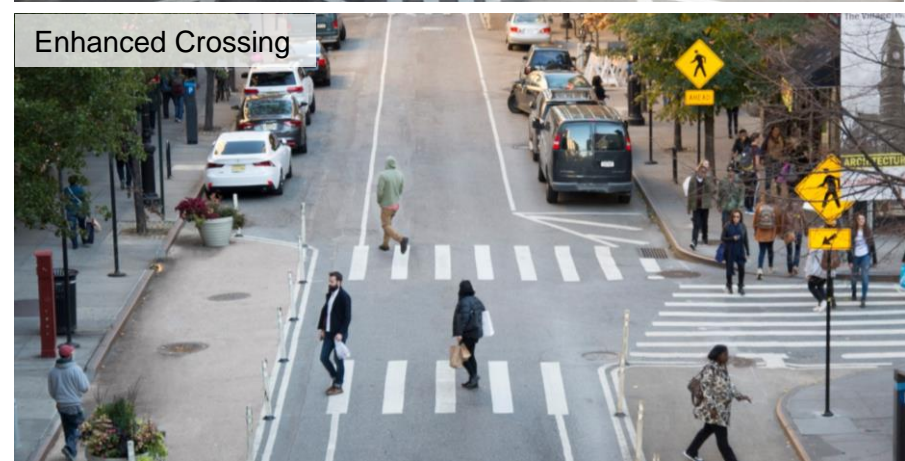
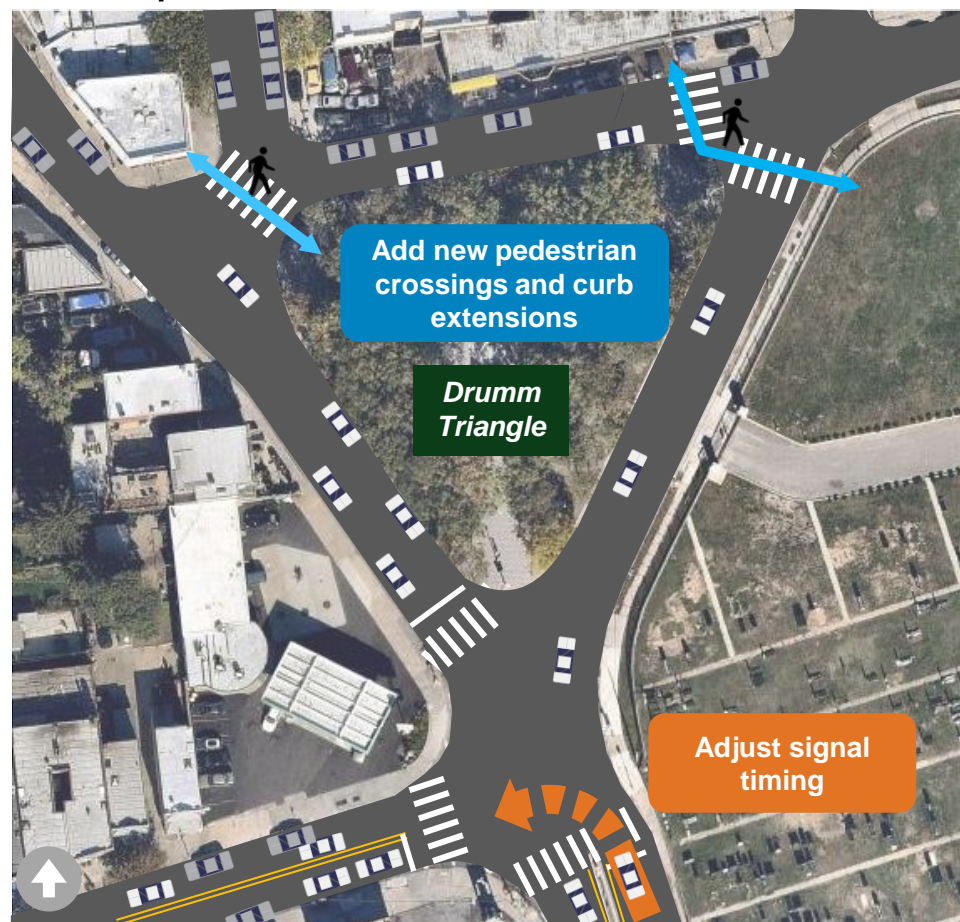
- NB left turns from Cypress Hills St banned in AM
- Conflict between turning and through vehicles causes congestion, unsafe movements
- Bike lane markings end without warning
- No sidewalk on east side

Proposed



- Eliminate NB left turns from Cypress Hills St at all times
- Extend protected bike lane through intersection
- Add painted sidewalk space that is accessible by crosswalks
- Improve traffic flow, decrease congestion and unsafe movements

Cooper Avenue – Proposed Additional Safety Improvements



Issues

- Limited pedestrian access to Drumm Triangle
- Heavy turns onto Cooper Ave conflict with pedestrian crossing
- Insufficient time dedicated to NB left turns onto Cooper Ave

Proposed

- *Study in Progress:* Stop controlled crossings (pending warrant) or enhanced crossings to Drumm Triangle
- Increased pedestrian space
- Adjust signal timing at Cypress Hills St/Cooper Ave to improve traffic flow and pedestrian safety

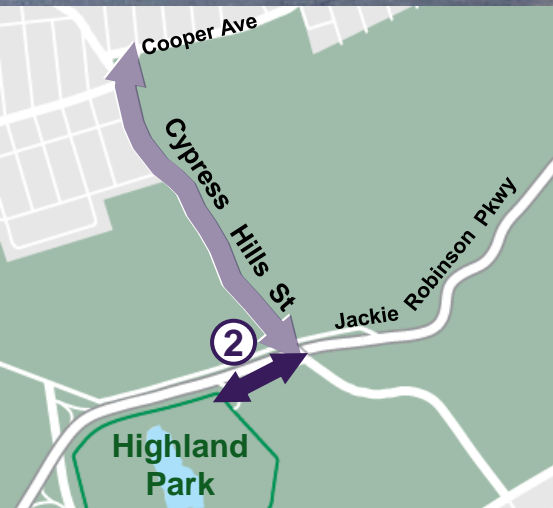
Update Park Connection

Jackie Robinson Pkwy – Highland Park

2



Jackie Robinson Pkwy Service Rd,
facing east



Highland Park Access

Jackie Robinson Pkwy Service Rd

- Existing bike route on sidewalk - *unmarked*
- 1 vehicle lane each direction
- Jackie Robinson Pkwy access for vehicles
- Highland Park entrance for pedestrians, bike riders

Improved Access to Highland Park



Existing: vehicle slip lane and no crosswalk at Jackie Robinson Pkwy on/off ramp



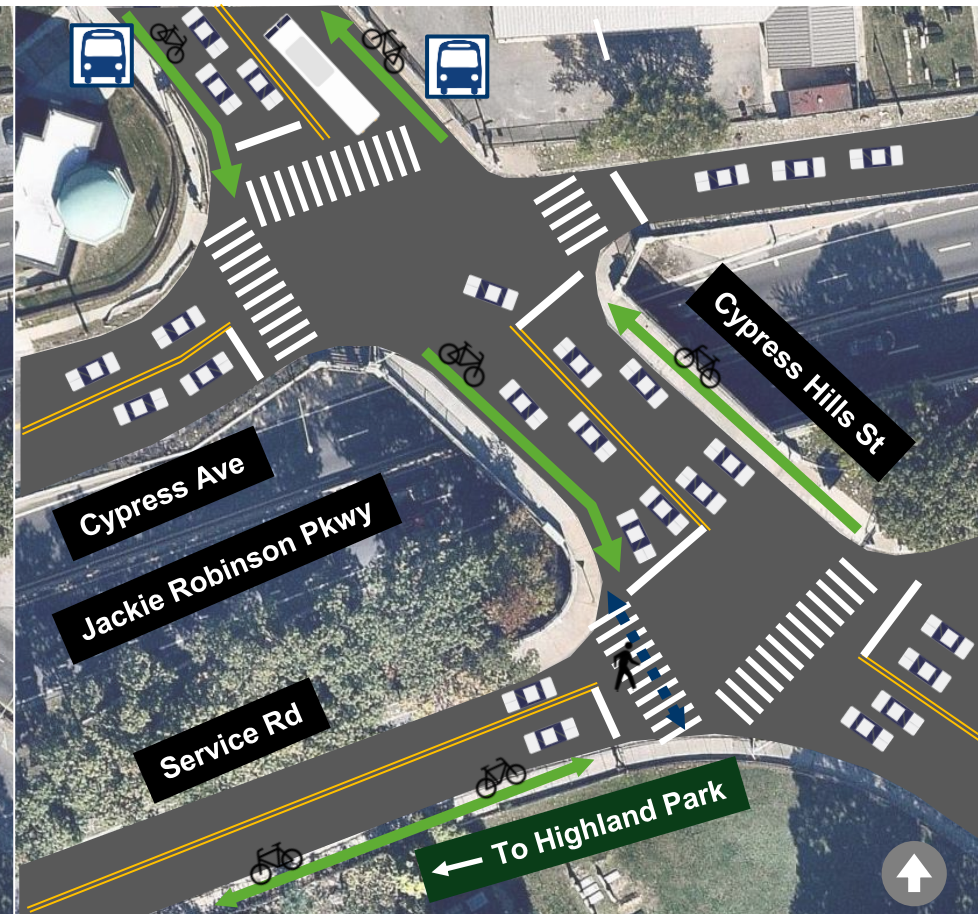
Jackie Robinson Pkwy

Existing

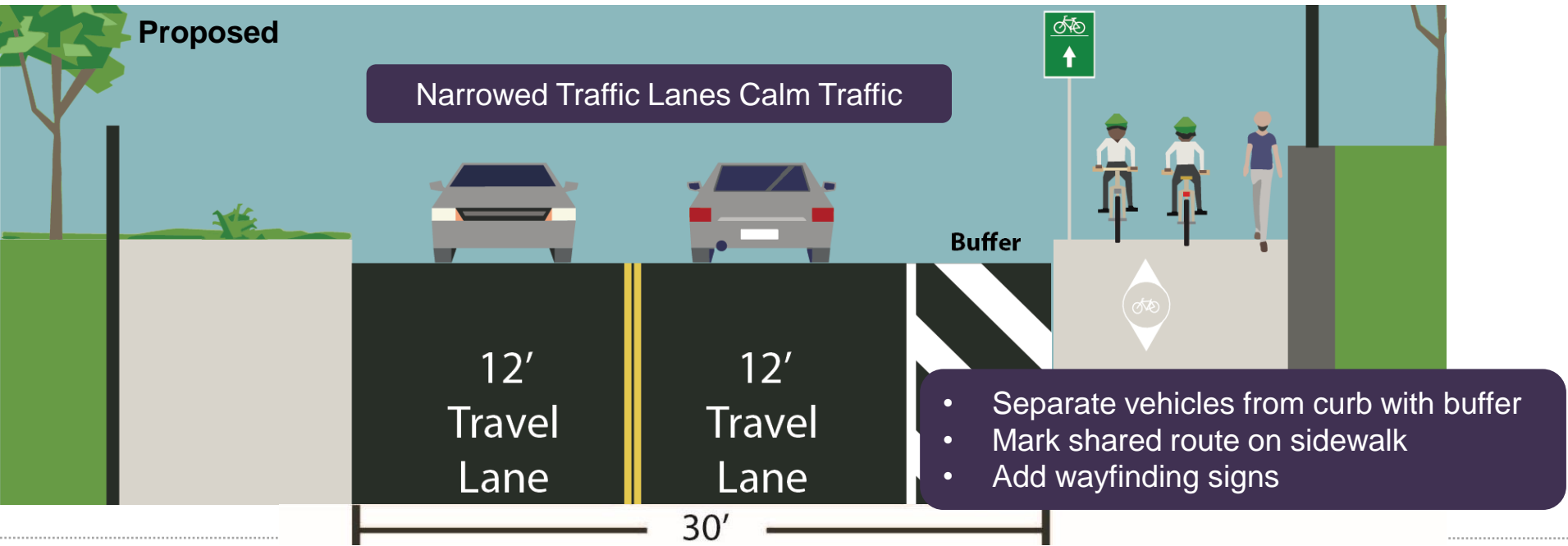
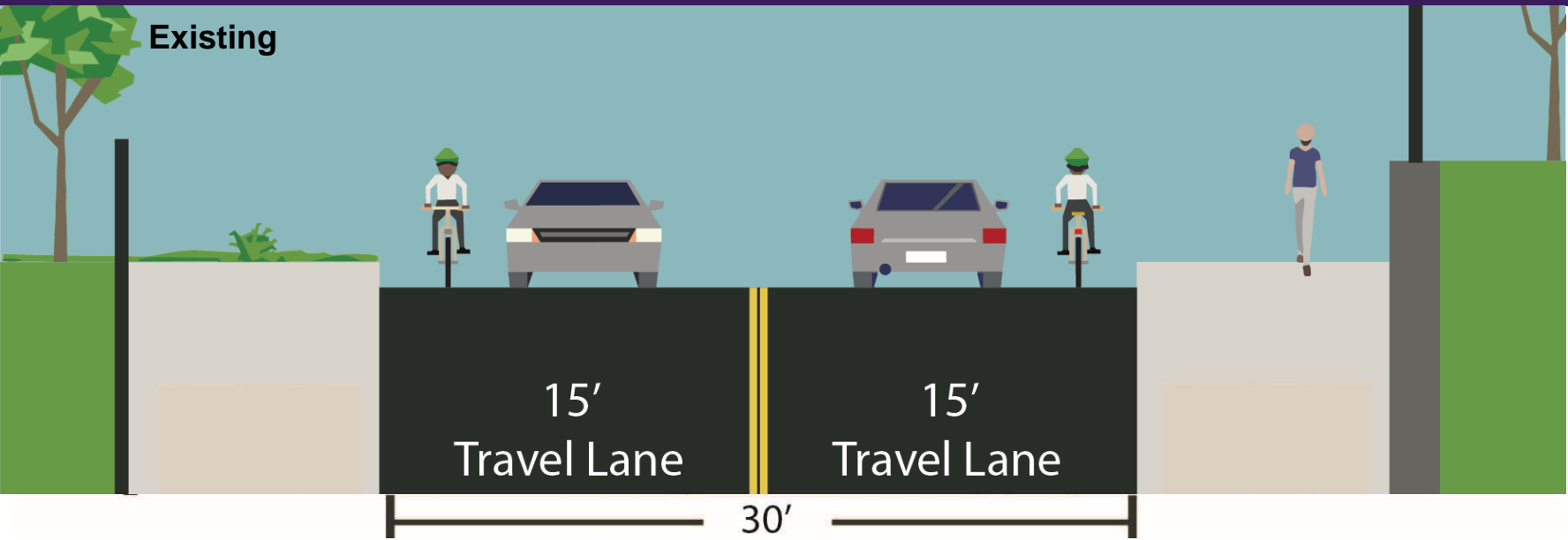


- Slip lane for SB right turns to Jackie Robinson Pkwy on-ramp
- Missing crosswalks
- Unclear, challenging pedestrian access to Highland Park

Proposed



- Signalize slip lane to Jackie Robinson Pkwy on ramp
- Install new crosswalk
- Enhance bike connection to Highland Park



Project Benefits

- Improved safety and efficiency for all road users
- Improved pedestrian space and crossings, access to parks, cemeteries
- Improved bus service with consolidated, ADA compliant stops
- Safe one mile protected bicycle connection to Highland Park, greenways



THANK YOU!

Questions?



NYCDOT



nyc_dot



nyc_dot



NYCDOT