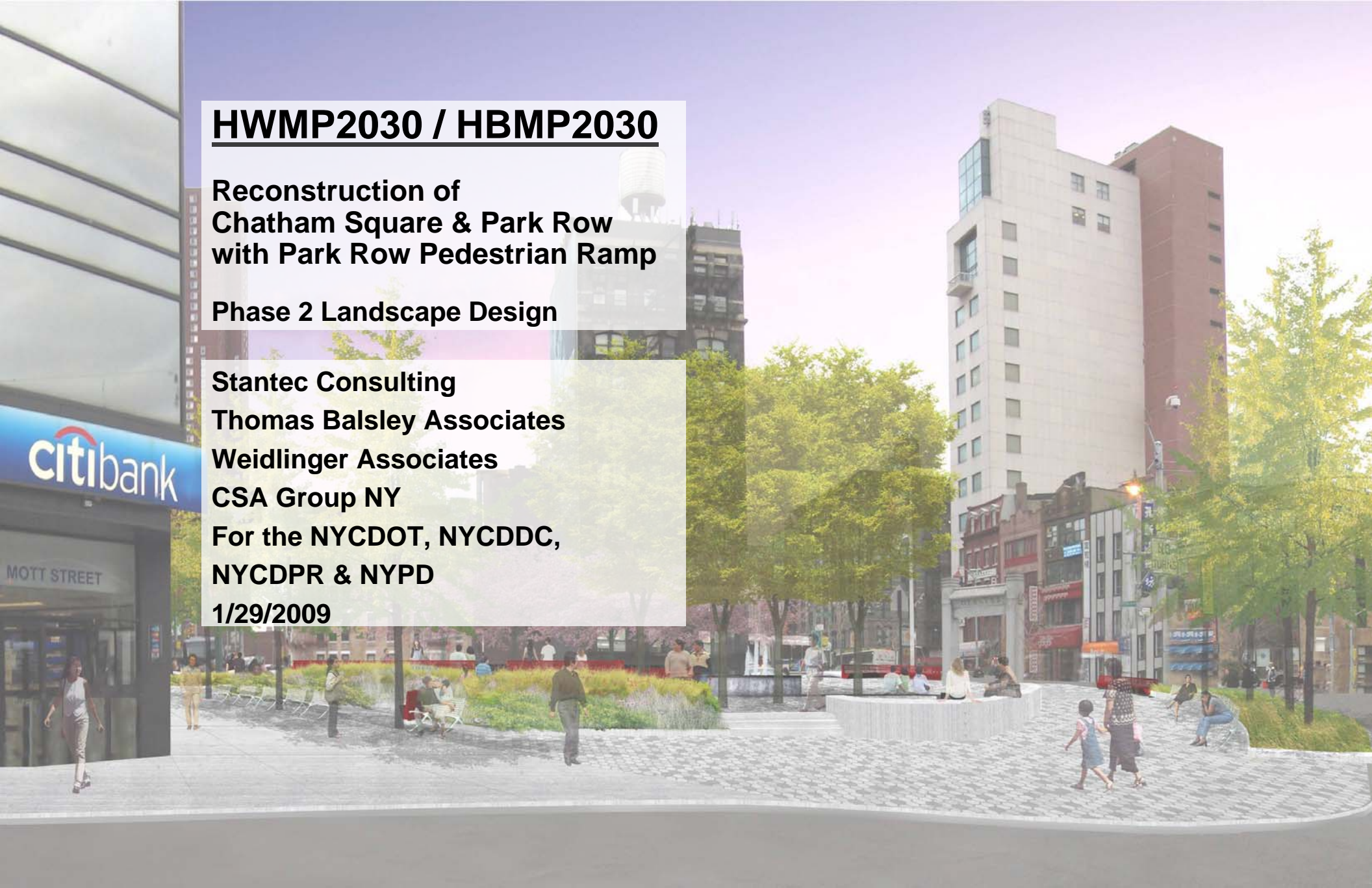


HWMP2030 / HBMP2030

**Reconstruction of
Chatham Square & Park Row
with Park Row Pedestrian Ramp**

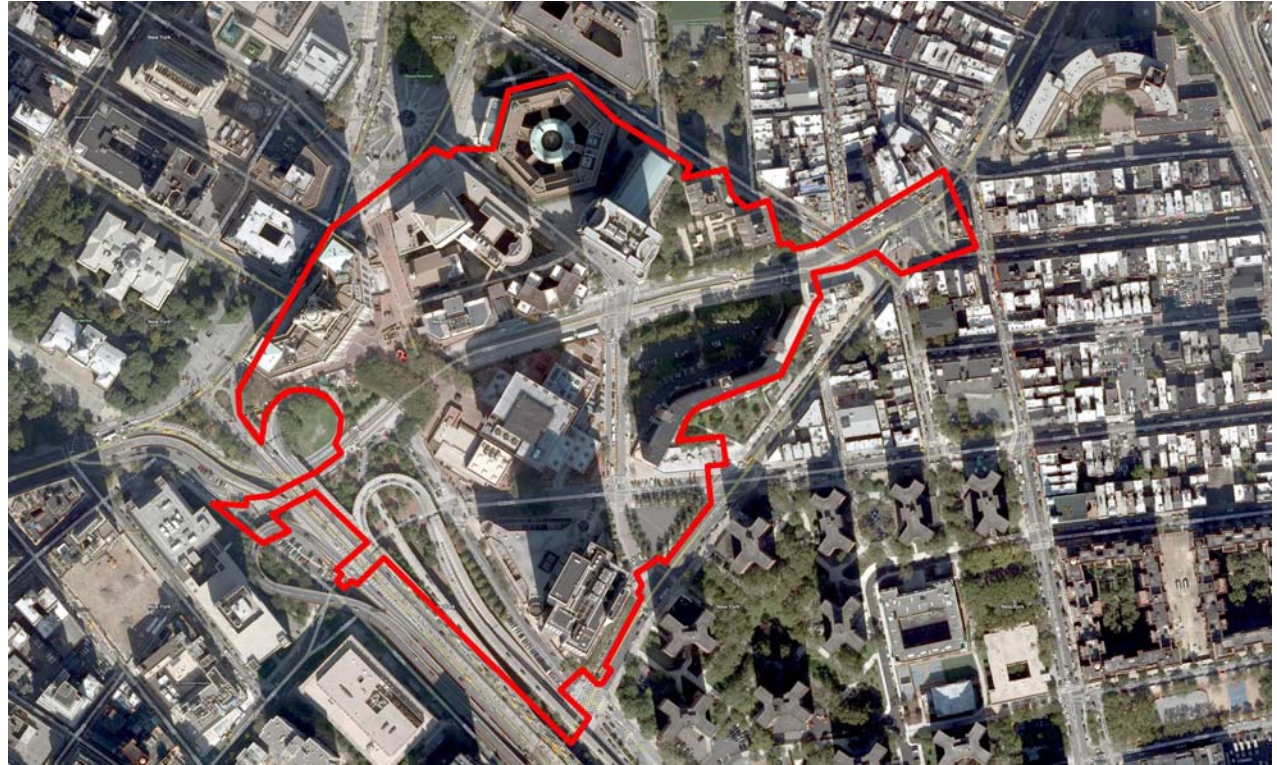
Phase 2 Landscape Design

**Stantec Consulting
Thomas Balsley Associates
Weidlinger Associates
CSA Group NY
For the NYCDOT, NYCDDC,
NYCDPR & NYPD
1/29/2009**



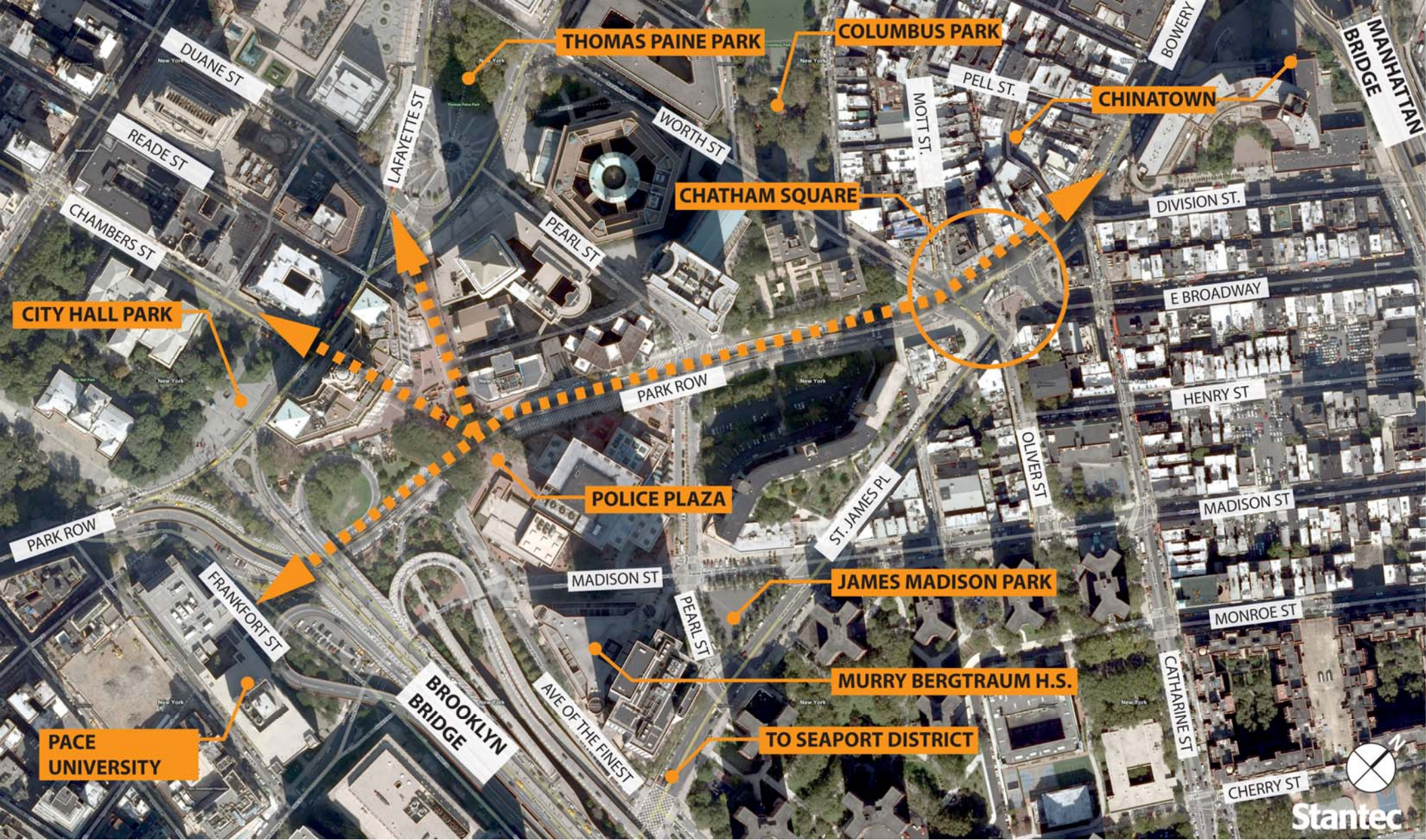


Location Map - Borough



Location Map - Neighborhood







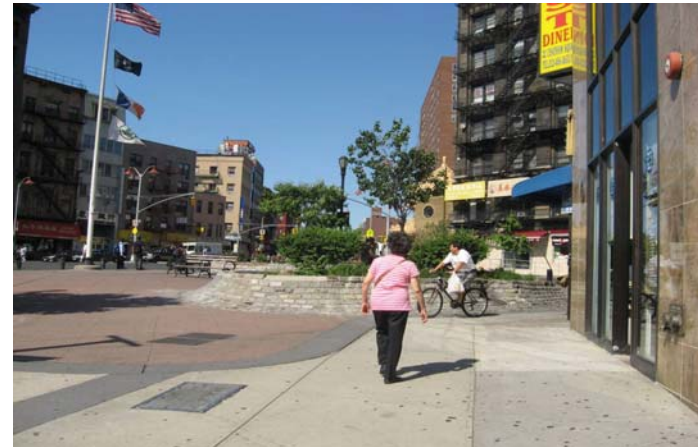
Kimlau Arch & Lin Ze Xu Statue



Looking West From Oliver St.



Looking SW from Chatham Sq.



Looking North From Chatham Sq.

- A mix of low, older brick mixed-use buildings
- High volumes of shoppers, visitors and travelers



Kimlau Arch



Lin Ze Xu Statue



Chatham Towers



Chatham Green



Chatham Green

The northern block is bordered by two high rise residential buildings, Chatham Towers and Chatham Green, and intersects Pearl Street by the Federal Building



Looking South from Worth Street



Looking North from Park Row towards Worth Street



Looking SE from Pearl Street at the approximate Location of the proposed pedestrian ramp



Police Plaza overpass from Park Row



View from Police Plaza Overpass



Federal Building at Pearl Street & Park Row



View of Park Row and Brooklyn Bridge Ramp from Police Plaza

- Site passes by a Federal Courthouse and the NYC Police Headquarters
- Site passes beneath overpass connecting the Municipal Building to One Police Plaza South
- Site connects to Frankfort street near the off ramps to the Brooklyn Bridge



Frankfort Street

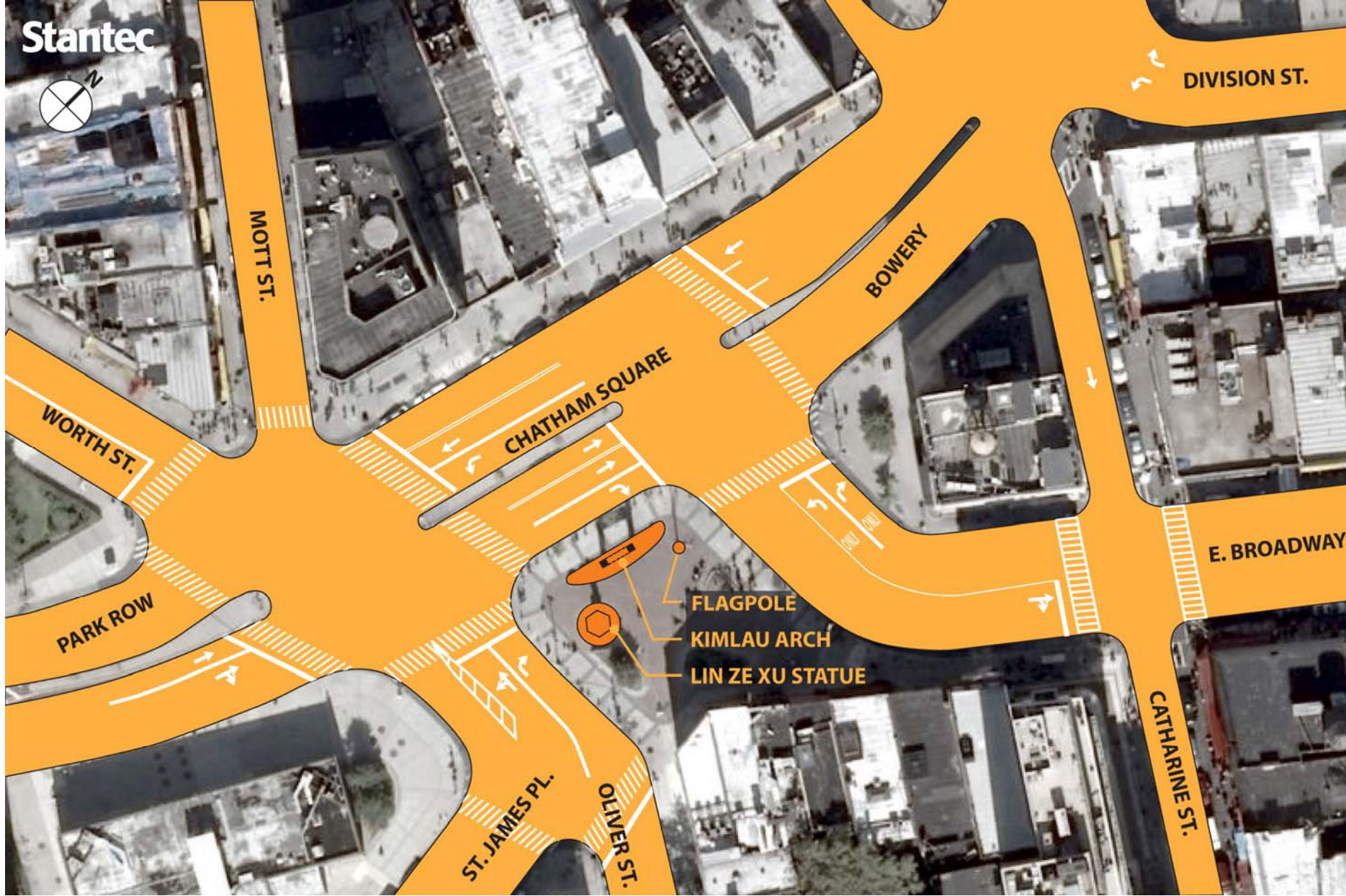


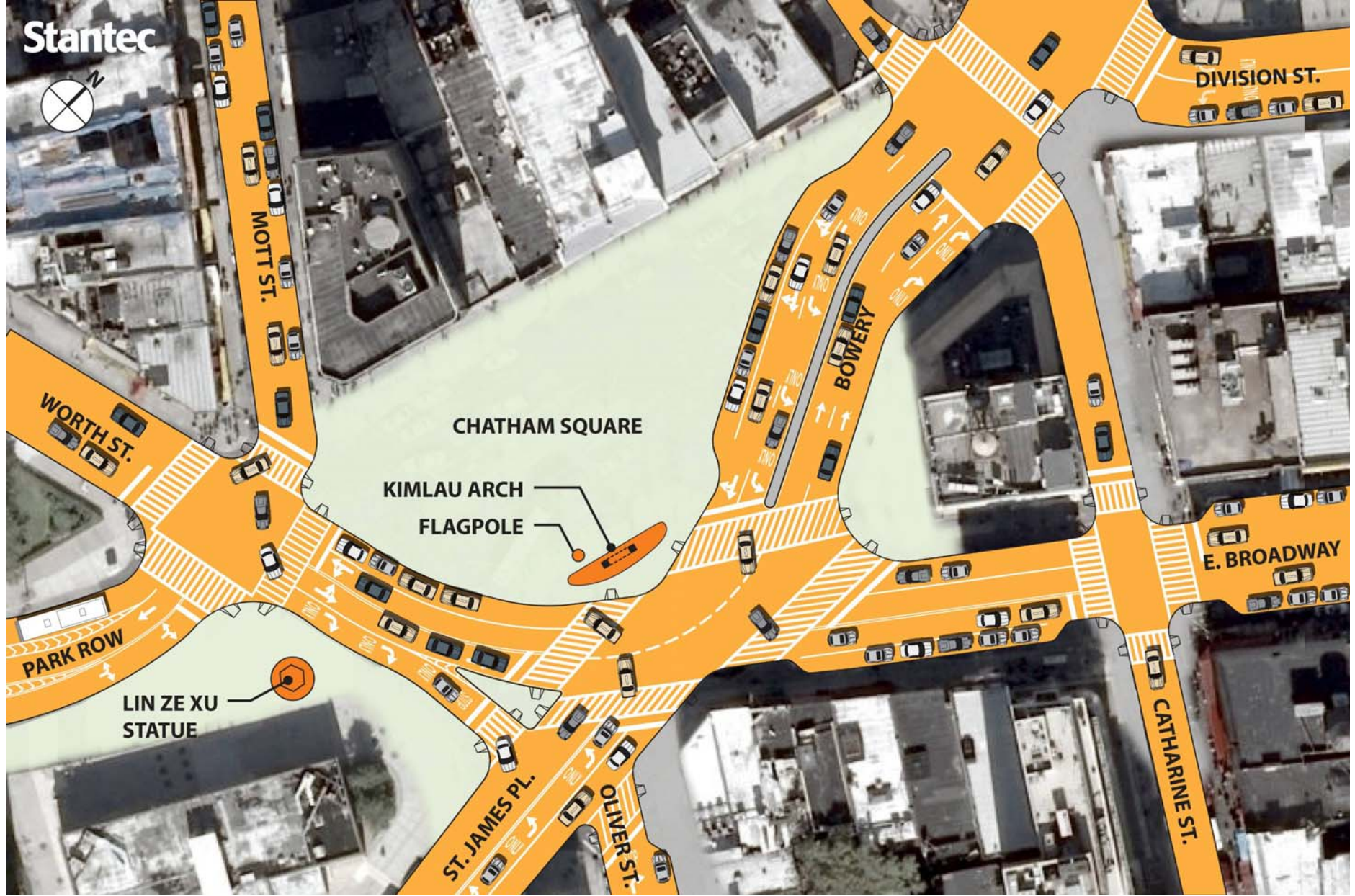
Park Row at Frankfort Street



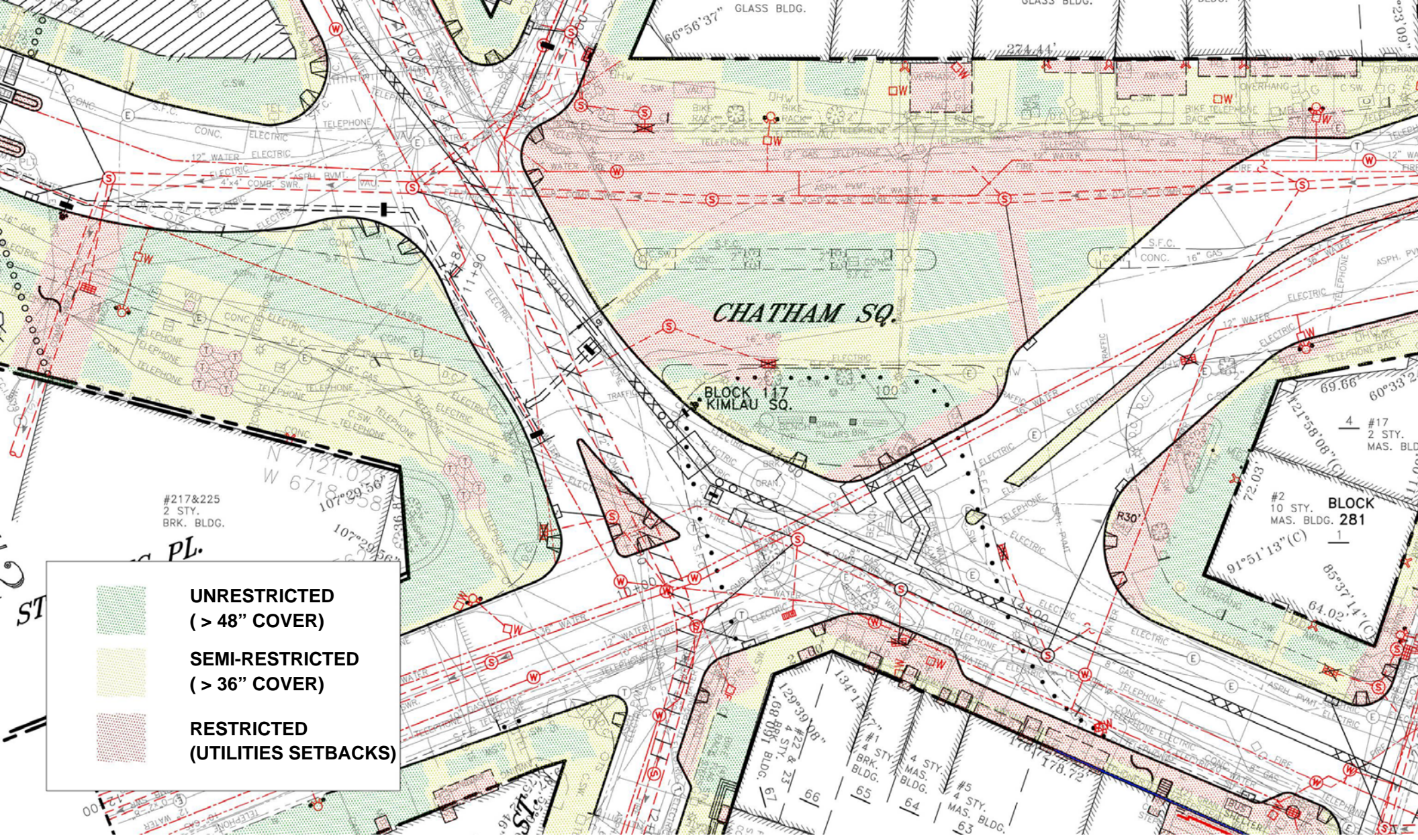
Brooklyn Bridge Ramp at Park Row

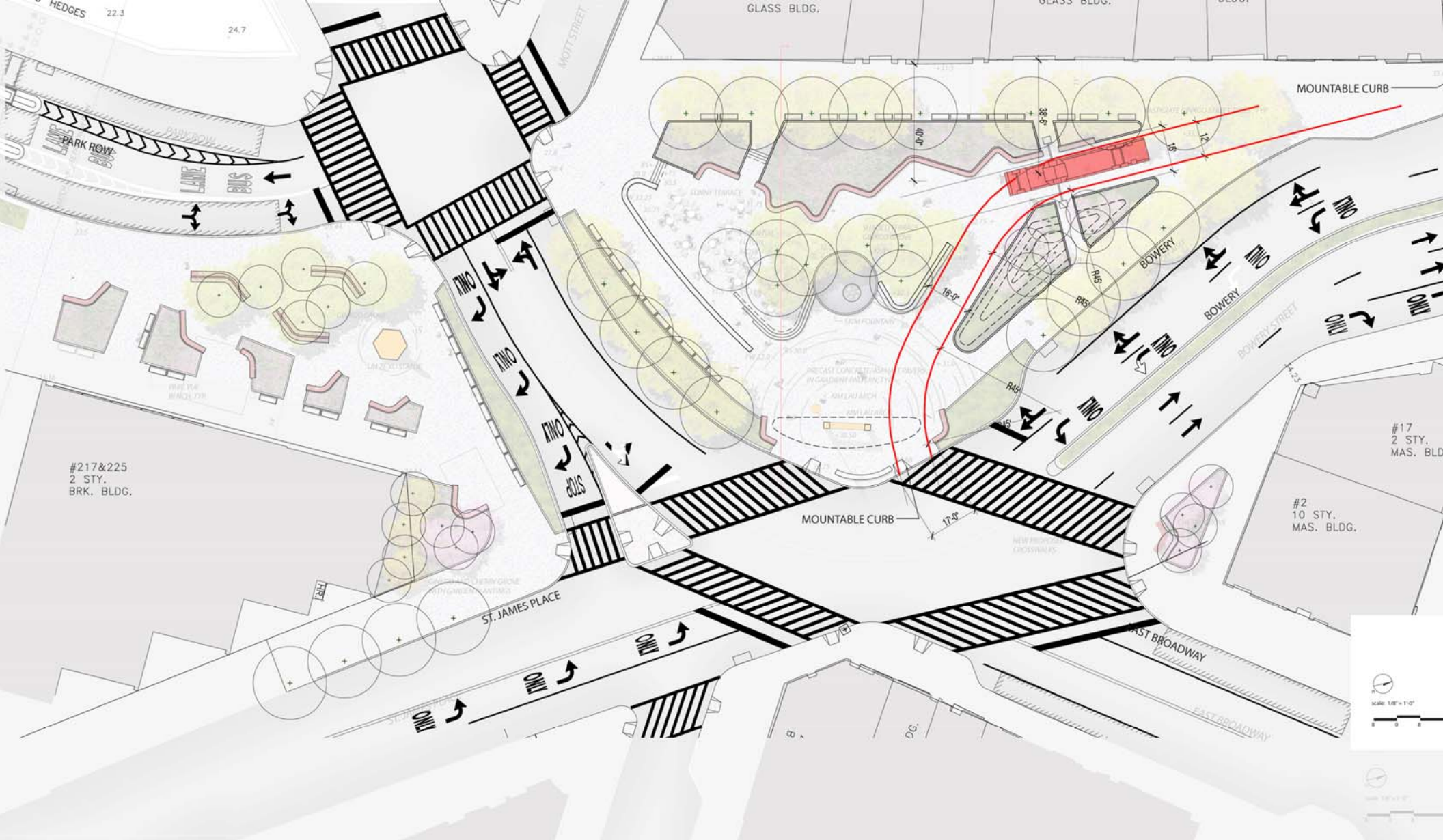






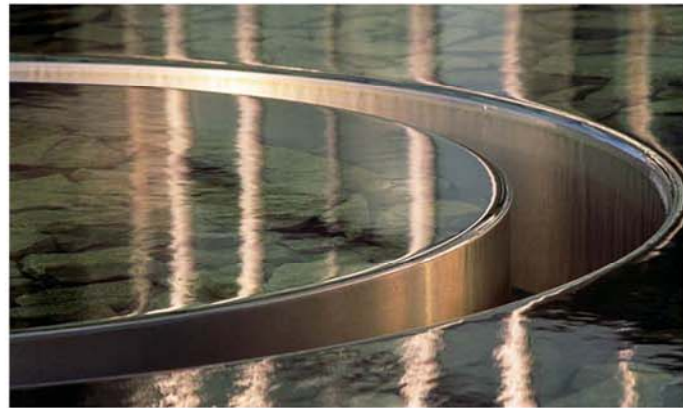
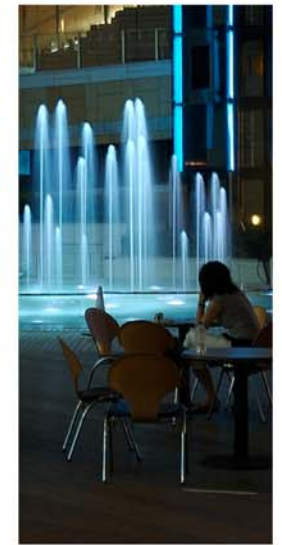
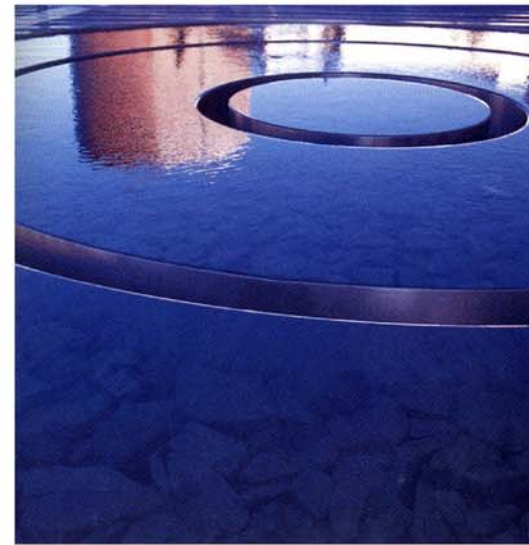


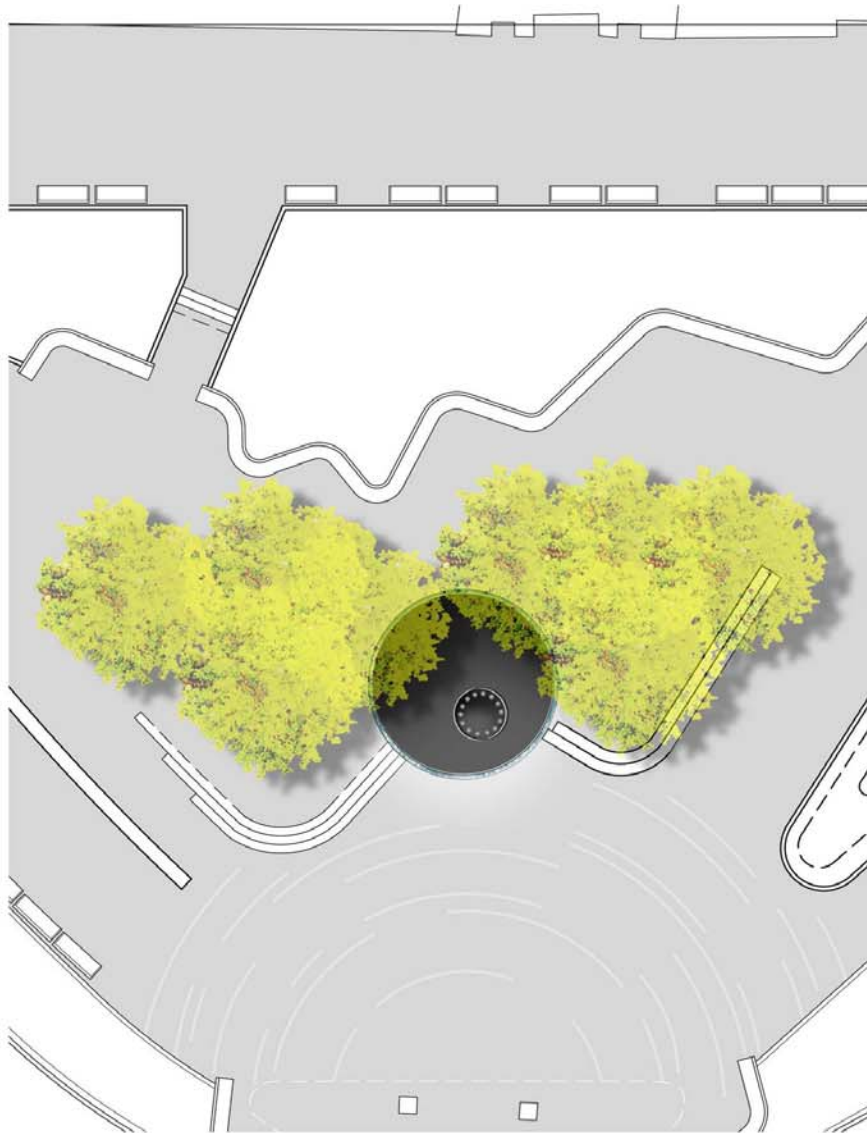




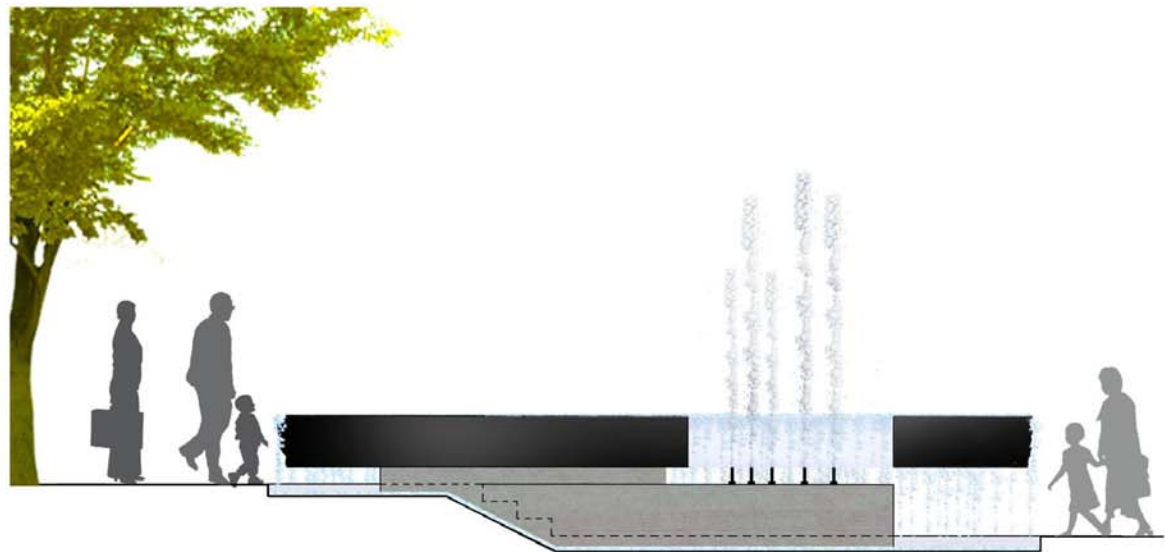


Section A at Chatham Square

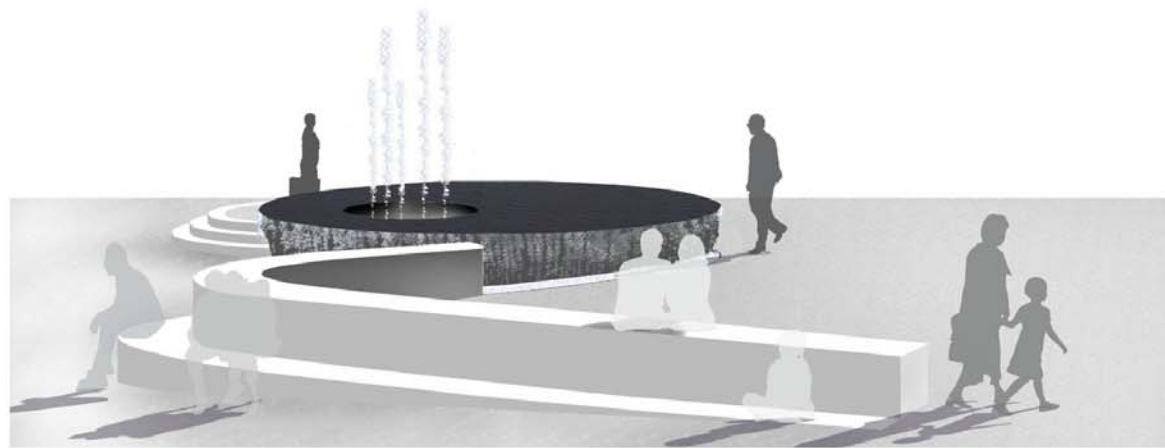




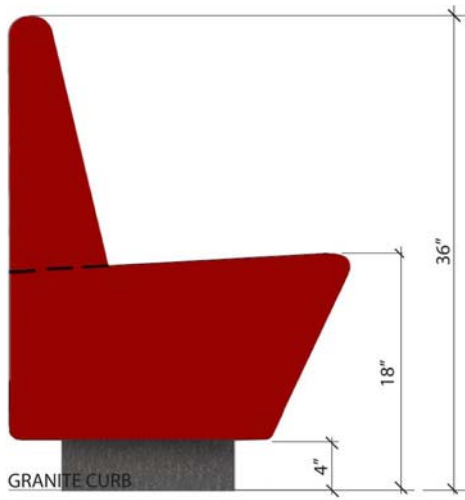
Plan at 1/16"=1'



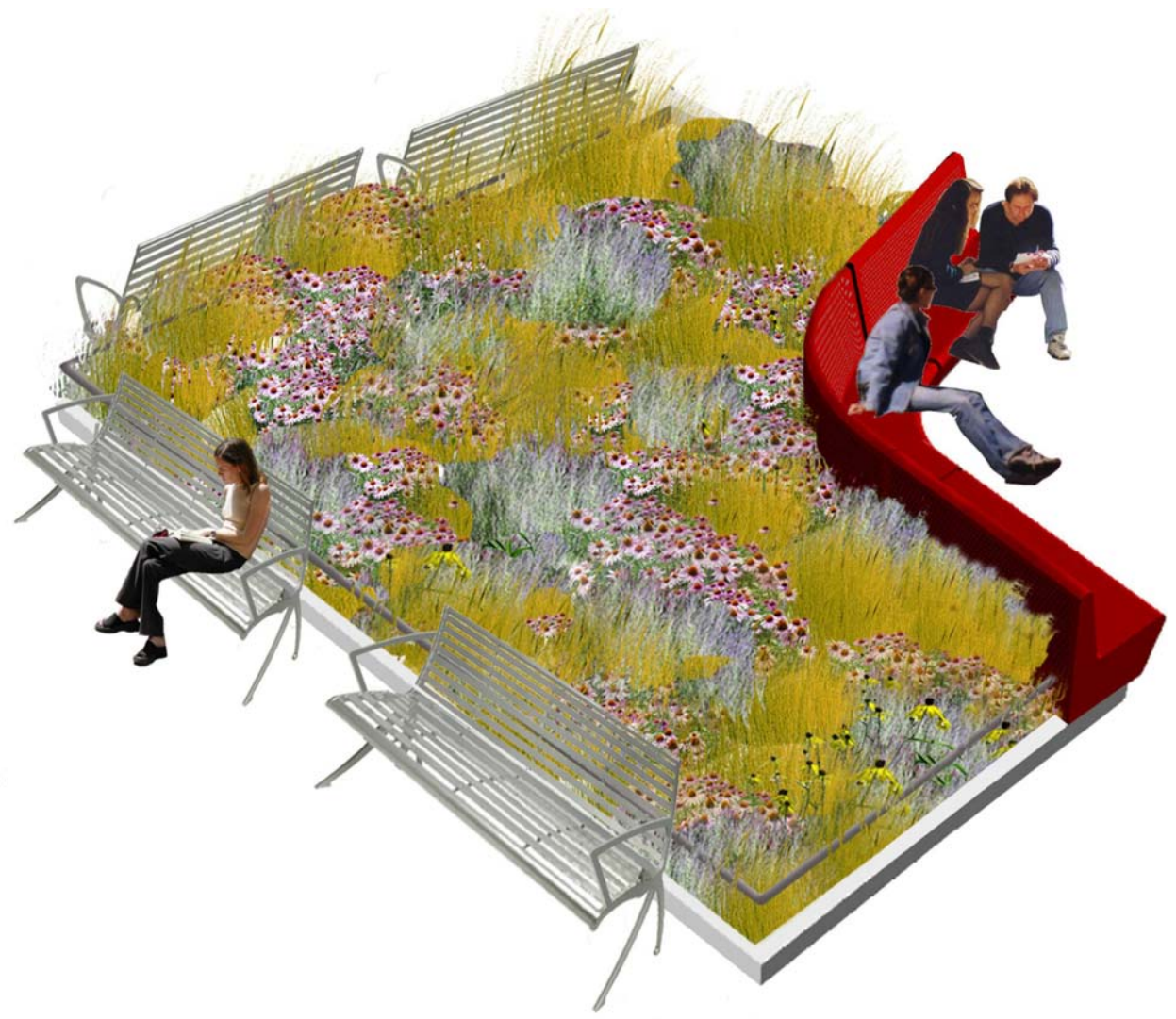
Section at 1/4"=1'



Perspective



Bench Section



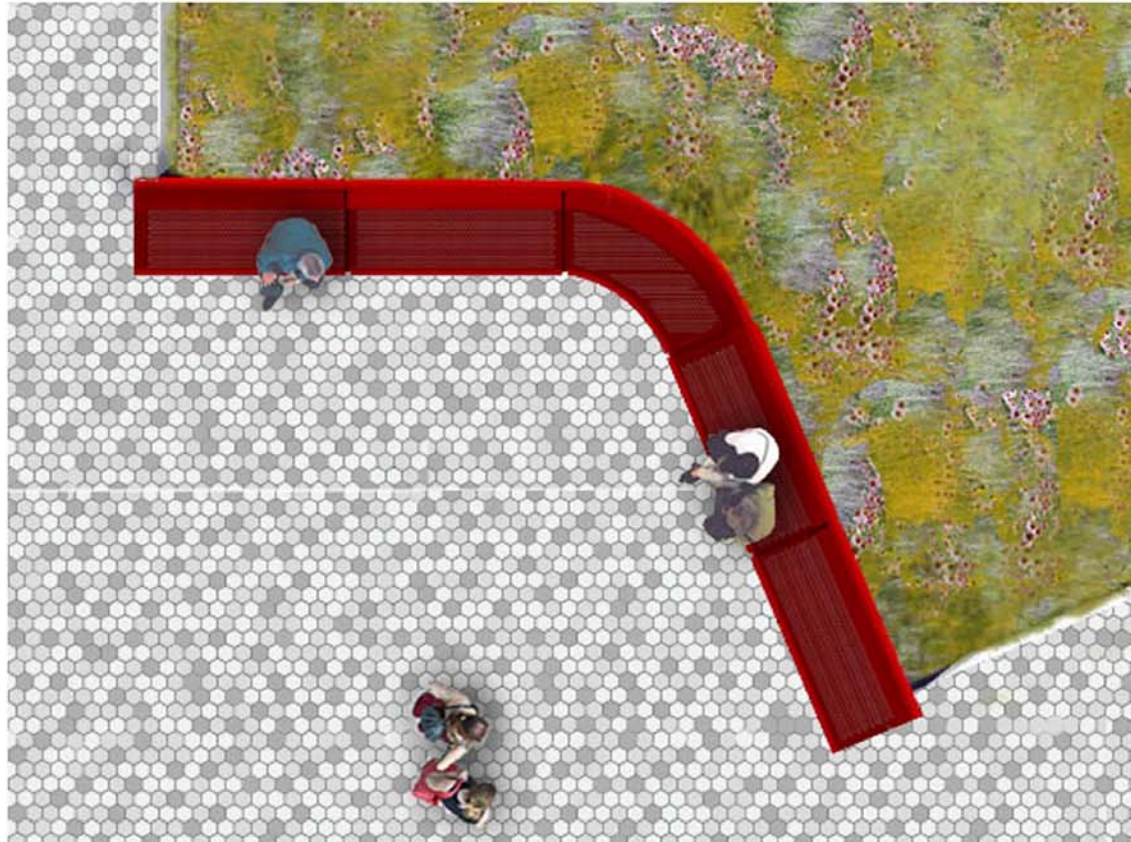
Perspective



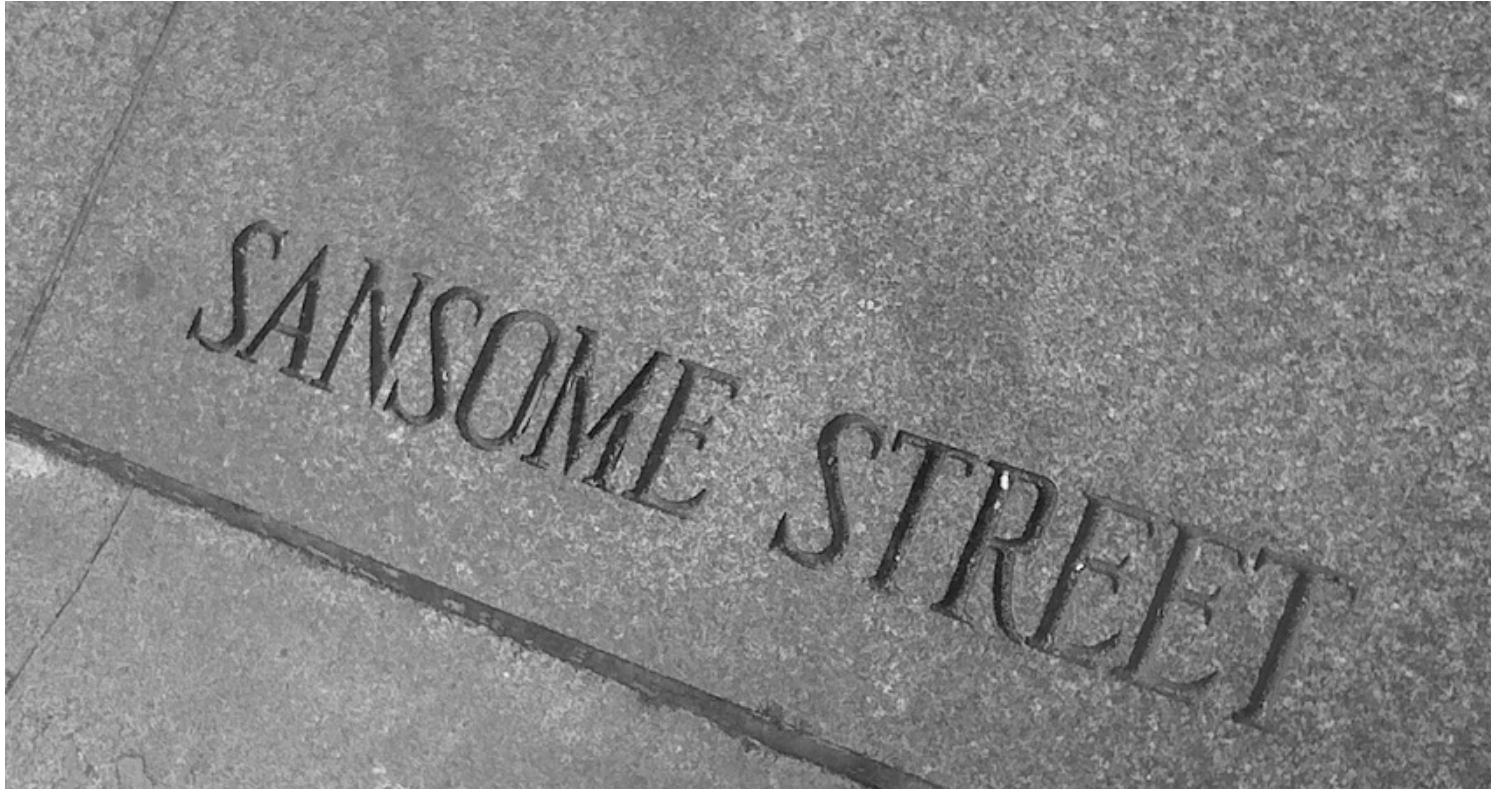
Parc Vue Bench



Elevation



Plan



Granite Directional Marker

PLANTS OF CHINESE ORIGIN

Trees

Ginkgo
Prunus

Shrubs

Hydrangea macrophylla 'Nikko Blue'
Hydrangea paniculata
Nandina domestica
Rosa rugosa
Viburnum plicatum var tomentosum

Grasses, Groundcover and Perennials

Bletilla striata
Chrysanthemum rubellum 'Clara Curtis'
Collinsia heterophylla
Dryopteris erythrosora
Nepeta faassenii
Paeonia lactiflora
Paeonia suffruticosa
Rhodotypos scadens
Rohdea japonica

Hydrangea
Tree Hydrangea
Heavenly Bamboo
Rugosa Rose
Doublefile Viburnum

Chinese Ground Orchid
Chrysanthemum
Chinese Houses
Autumn Fern
Cat Mint
Chinese Peony
Tree Peony
Black Jetbead
China Lily



Ginkgo biloba



Cherries



Autumn Fern



Chinese Ground Orchid



Chinese Houses



Hydrangea



China Lily



Rugosa Rose



Chinese Peony



Black Jetbead



Cat Mint

GENERAL PLANT LIST

Trees

<i>Ginkgo biloba</i> 'Princeton Sentry'	Princeton Sentry
<i>Ginkgo biloba</i> 'Magyar'	Magyar Ginkgo
<i>Prunus x incam</i> 'Okame'	Okame Cherry
<i>Prunus yedoensis</i>	Yoshino Cherry
<i>Prunus sargentii</i>	Sargent's Cherry
<i>Prunus subhirtella</i> 'Autumnalis'	Autumnalis Flowering Cherry
<i>Quercus palustris</i>	Pin Oak
<i>Quercus rubra</i>	Red Oak

Shrubs

<i>Buddleia dividii</i>	Butterfly bush
<i>Callicarpa bodinieri</i> var. <i>giraldii</i> 'Profusion'	Profusion Beautyberry
<i>Cornus x stolonifera</i>	Red twig dogwood
<i>Cotoneaster horizontalis</i>	Rockspray cotoneaster
<i>Nandina domestica</i>	Heavenly Bamboo
<i>Prunus laurocerasus</i>	Cherry laurel
<i>Rhododendron</i> 'PJM'	PJM Azalea
<i>Rhododendron mucronulatum</i>	Azalea
<i>Rosa rugosa</i>	Rugosa rose
<i>Spirea</i> 'Anthony waterer'	Anthony Waterer Spirea
<i>Viburnum carlesii</i>	Koreanspice Viburnum
<i>Viburnum plicatum</i> var. <i>tomentosum</i>	Doublefile Viburnum

Grasses

<i>Calamagrostis x acutifolia</i> 'Karl Forster'	Karl Forster Feather Reed Grass
<i>Deschampsia cespitosa</i> 'Goldtau'	Gold Dew Tufted Hair Grass
<i>Miscanthus sinensis</i> 'Purpurescens'	Purpurescens Grass
<i>Miscanthus sinensis</i> variegatus	Variegated Japanese Silver Grass
<i>Molina caerulea</i> 'Transparent'	Purple Moor Grass
<i>Panicum virgatum</i> 'Shenandoah'	Shenandoah Switch Grass
<i>Pennisetum alopecuroides</i> 'Hameln'	Hameln Fountain Grass
<i>Sporobolus heterolepis</i>	Prairie Dropseed



Okame Cherry



Yoshino Cherry



Red Oak



Red Twig Dogwood



Anthony Waterer Spirea



Karl Forster Feather Reed Grass



Fountain Grass

Ground Cover

Euonymus fortunei 'Coloratus'
Hostas sp.
Juniperus horizontalis 'Bar Harbor'
Juniperus squamata 'Blue Carpet'
Liriope sp.
Rhus aromatica 'Gro-Low'
Skimmia reevesiana
Vinca minor

Perennials

Achillea millefolium 'Fire King'
Allium aflatunense 'Purple Sensation'
Digitalis ferruginea
Echinacea purpurea
Eryngium giganteum
Hemerocallis
Nepeta faassenii
Perovskia atriplicifolia
Rhodotypos scandens
Salvia nemorosa
Salvia x sylvestris

Purple Wintercreeper
Plantain Lily
Bar Harbor Juniper
Blue Carpet Juniper
Lily Turf
Gro-low Fragrant Sumac
Dwarf Skimmia
Periwinkle

Yarrow
Purple Sensation Flowering Onion
Foxglove
Coneflower
Miss Willmott's Ghost (Sea Holly)
Day lily
Cat Mint
Russian Sage
Black Jetbead
Meadow Sage
Blue Hill Sage



Periwinkle



Coneflower



Purple Sensation Flowering Onion



Meadow Sage



Russian Sage



Foxglove



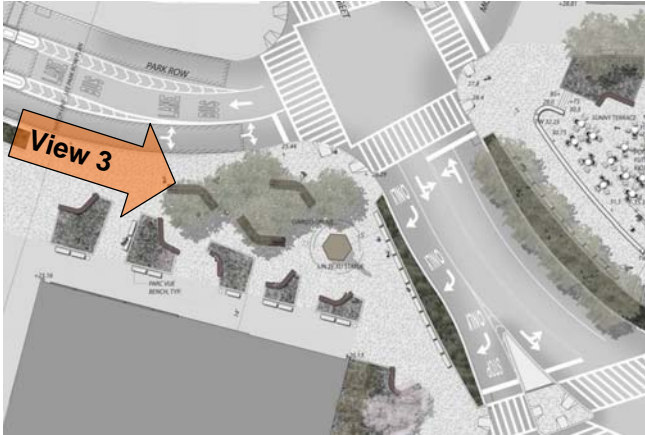
Dwarf Skimmia















PARK ROW OPTION B2 - WITH CHERRY TREES



Section 1 across Park Row between Chatham Square & Pearl Street



PEDESTRIAN RAMP

BERM WITH
URBAN PLANTING

12'-0" SHARED BIKE WAY
AND PEDESTRIAN PATH

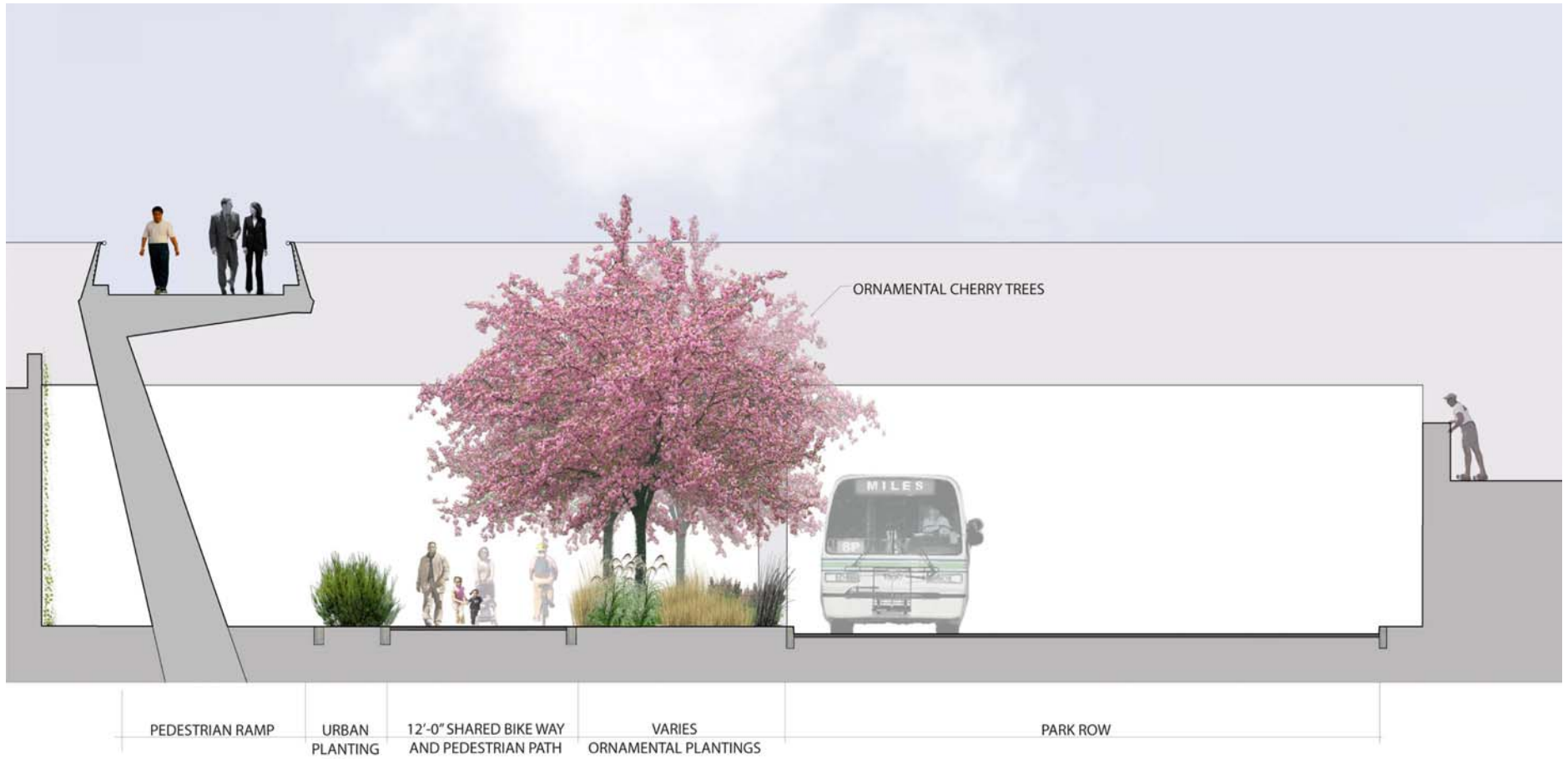
10'-0" MINIMUM
PLANTING BUFFER

PARK ROW

6'
STREET TREE ZONE
WITH COBBLESTONE
PAVERS

SIDEWALK

Section 2 across Park Row & Pedestrian Ramp



Section 3 across Park Row & Police Plaza





Rubble Treatment



Wall Treatment

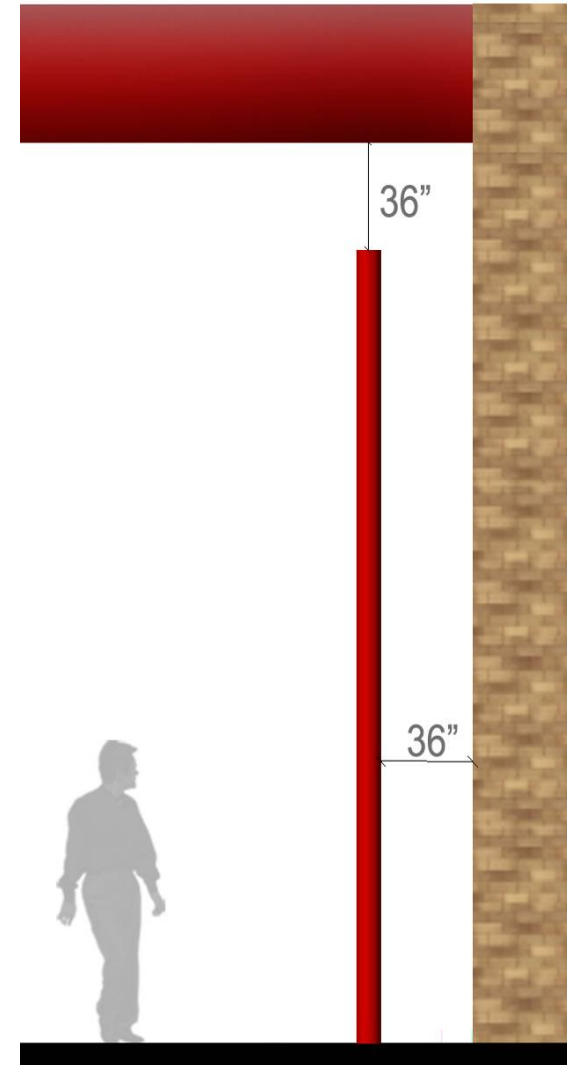


View 1: Looking North Toward Police Plaza Overpass

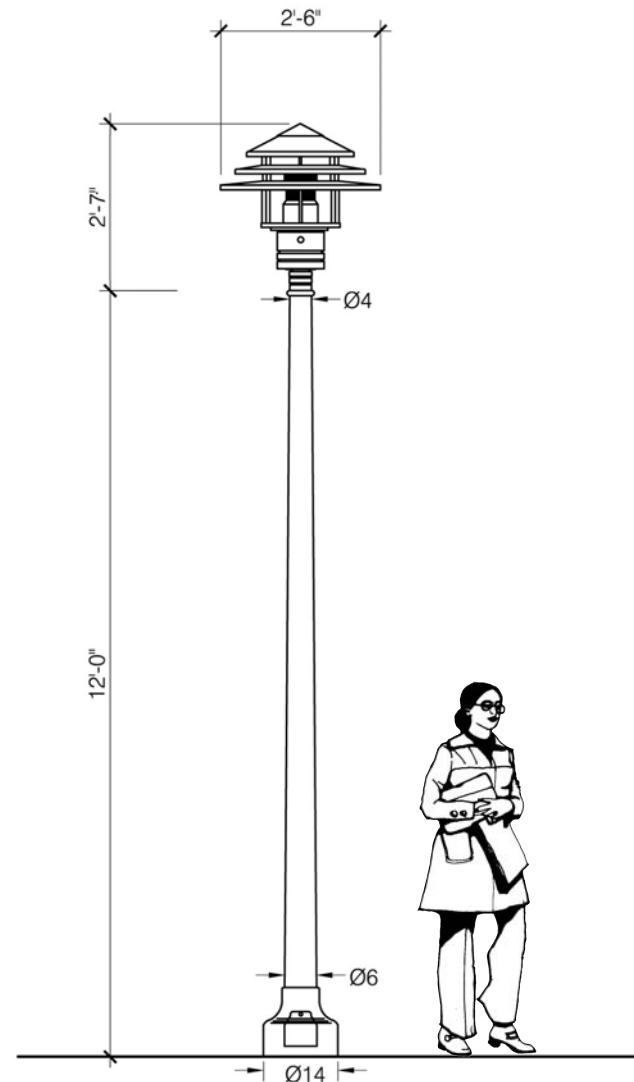




View 2: Police Plaza Tunnel



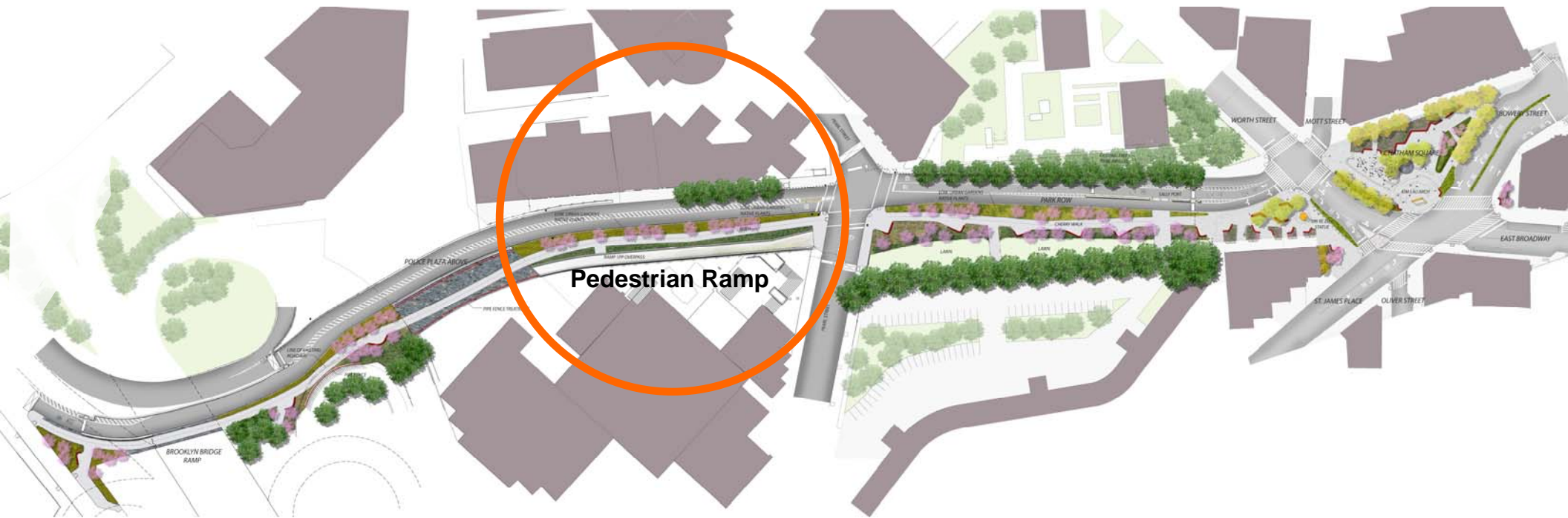
Section of Wall Treatment

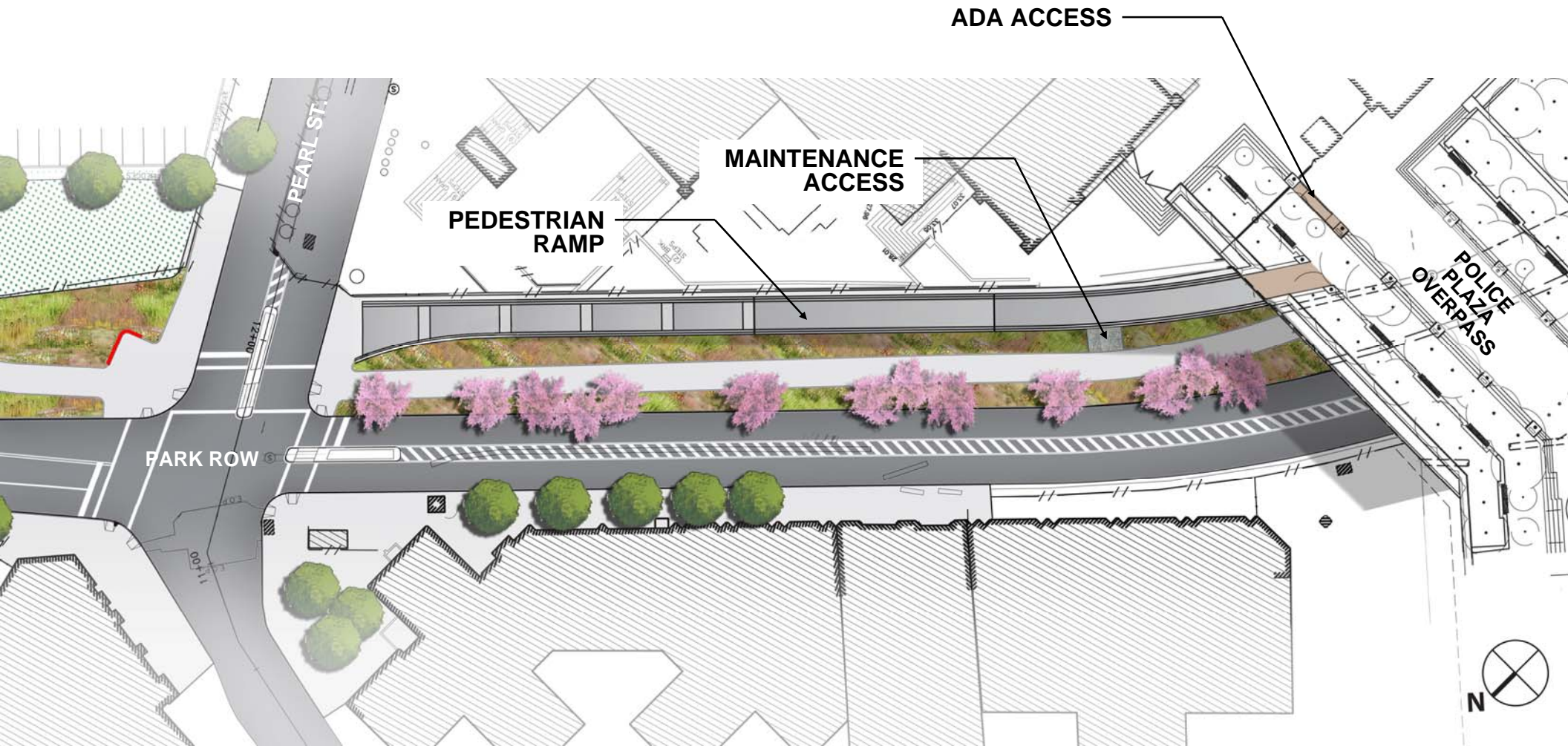


CANDELA LAMP POST WITH 150 WATT HIGH PRESSURE SODIUM LUMINAIRE







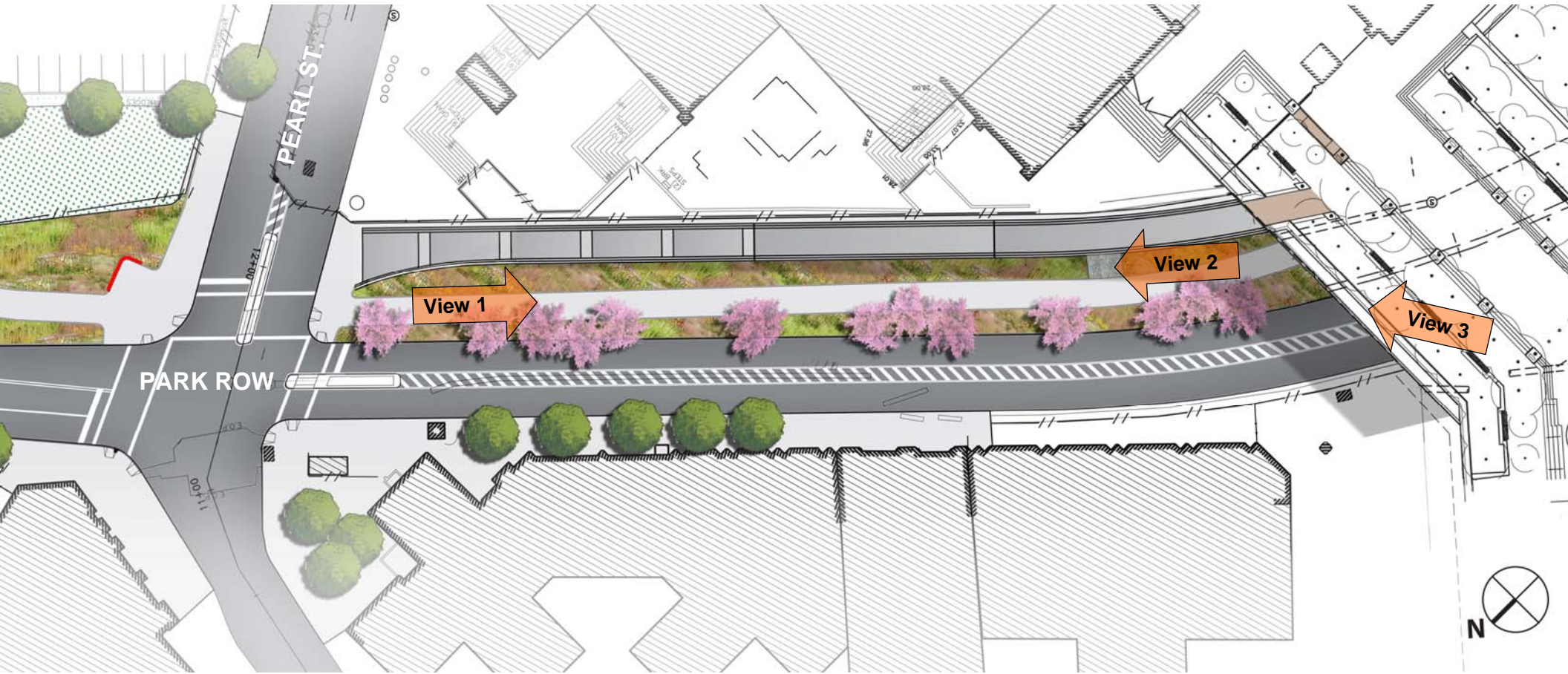




Pearl St

Police
Plaza
Overpass

Park Row Pedestrian Ramp from Pearl St to Police Plaza





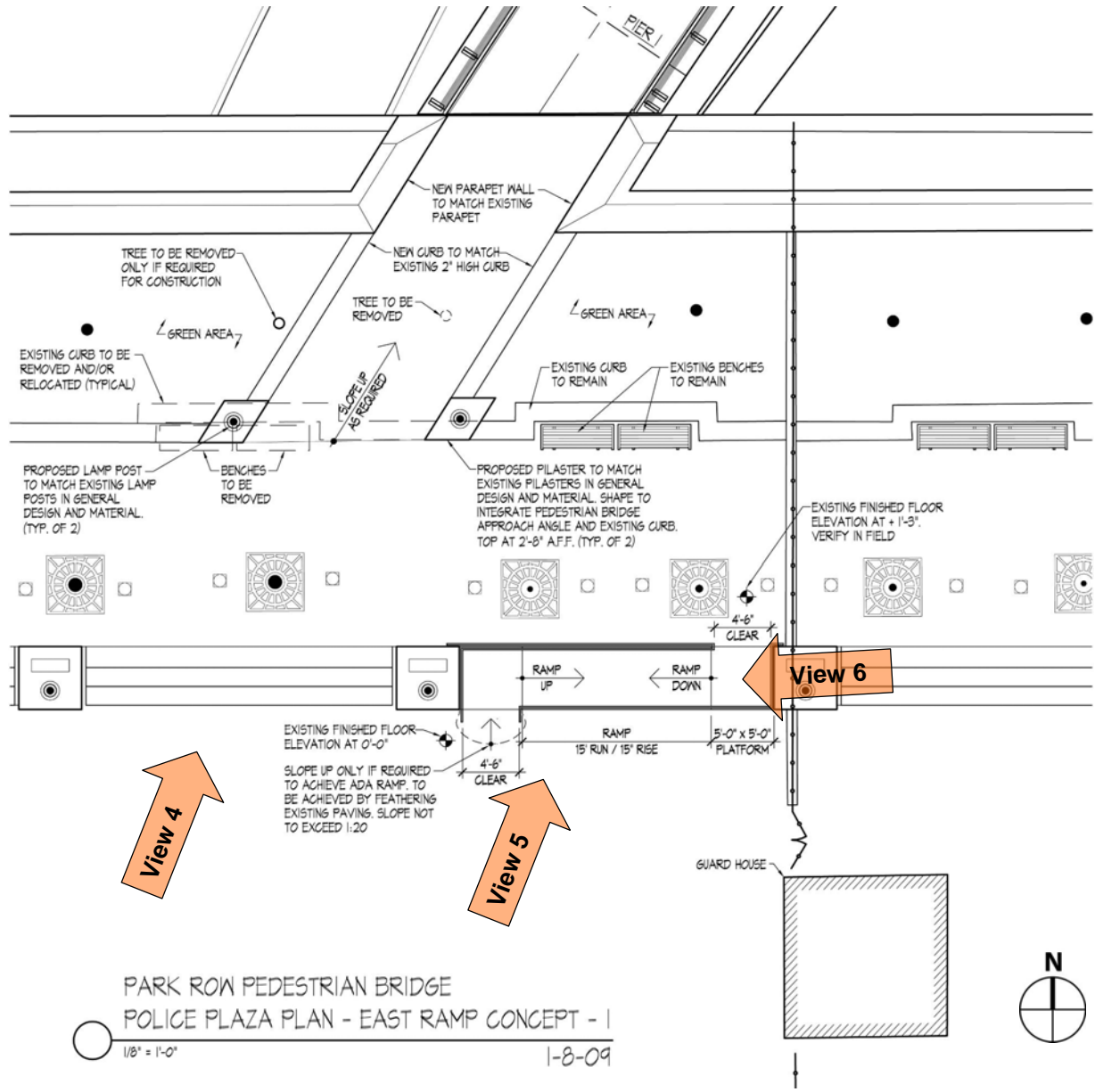




Stantec | TBA | WAI | CSA Group
DDC | DOT

Park Row
Pedestrian Ramp

Park Row Pedestrian Ramp
View 3



PARK ROW PEDESTRIAN BRIDGE
POLICE PLAZA PLAN - EAST RAMP CONCEPT - 1

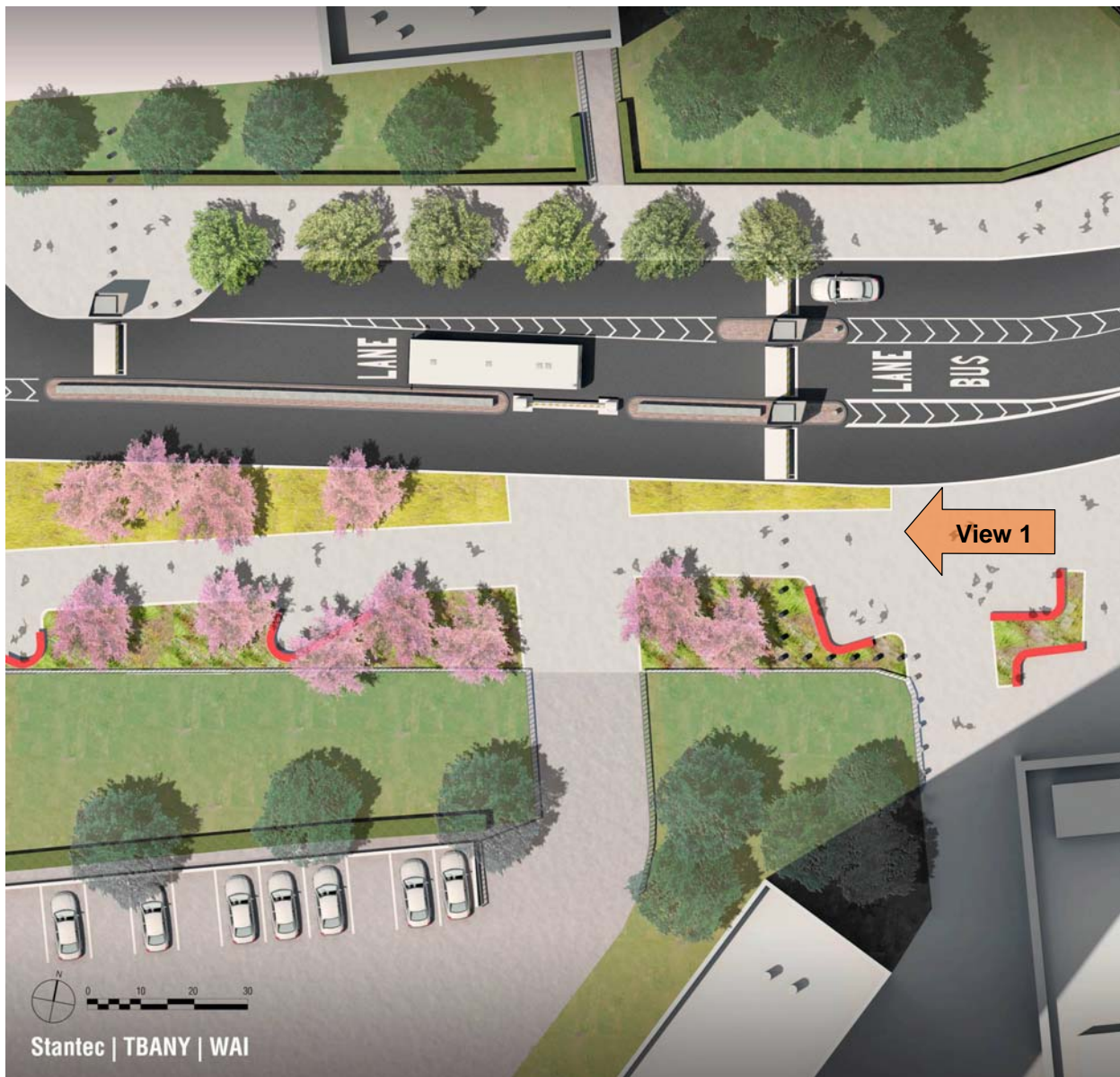
1/8" = 1'-0"

1-8-09













Stantec
50 WEST 23RD STREET
NEW YORK, NY
THOMAS BALSLEY ASSOCIATES
311 W. 27th STREET NEW YORK, NY
TBA



Stantec
50 WEST 23RD STREET
NEW YORK, NY
THOMAS BALSLEY ASSOCIATES
311 W. 27th STREET NEW YORK, NY
TBA





Stantec
50 WEST 23rd STREET
NEW YORK, NY

THOMAS BALSLEY ASSOCIATES
31 W. 27th STREET NEW YORK, NY