

Improving Safety on Broadway at Van Cortlandt Park

Community Workshop

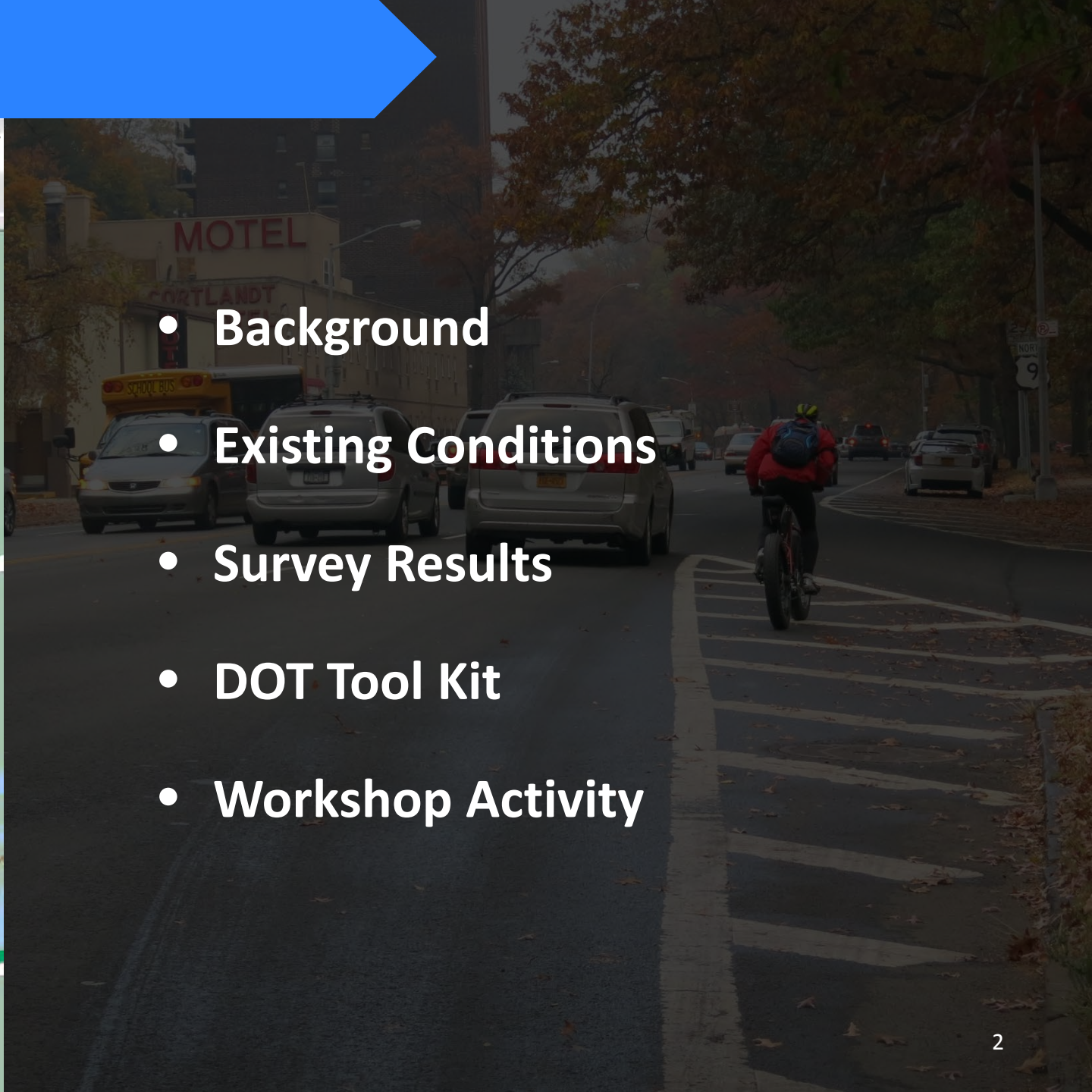
2015



Overview



- Background
- Existing Conditions
- Survey Results
- DOT Tool Kit
- Workshop Activity



Background



- **North of Manhattan College Parkway**
Broadway is 68' wide, 2 lanes in each direction
- **South of Manhattan College Parkway**
Broadway runs underneath the elevated train
- **Interchange with Henry Hudson Parkway**
- **Routes for both NYC & Westchester Buses**

Background

Multiple bus stops along Broadway



Senior Housing in the Area



Van Cortlandt Park is a popular destination in the neighborhood

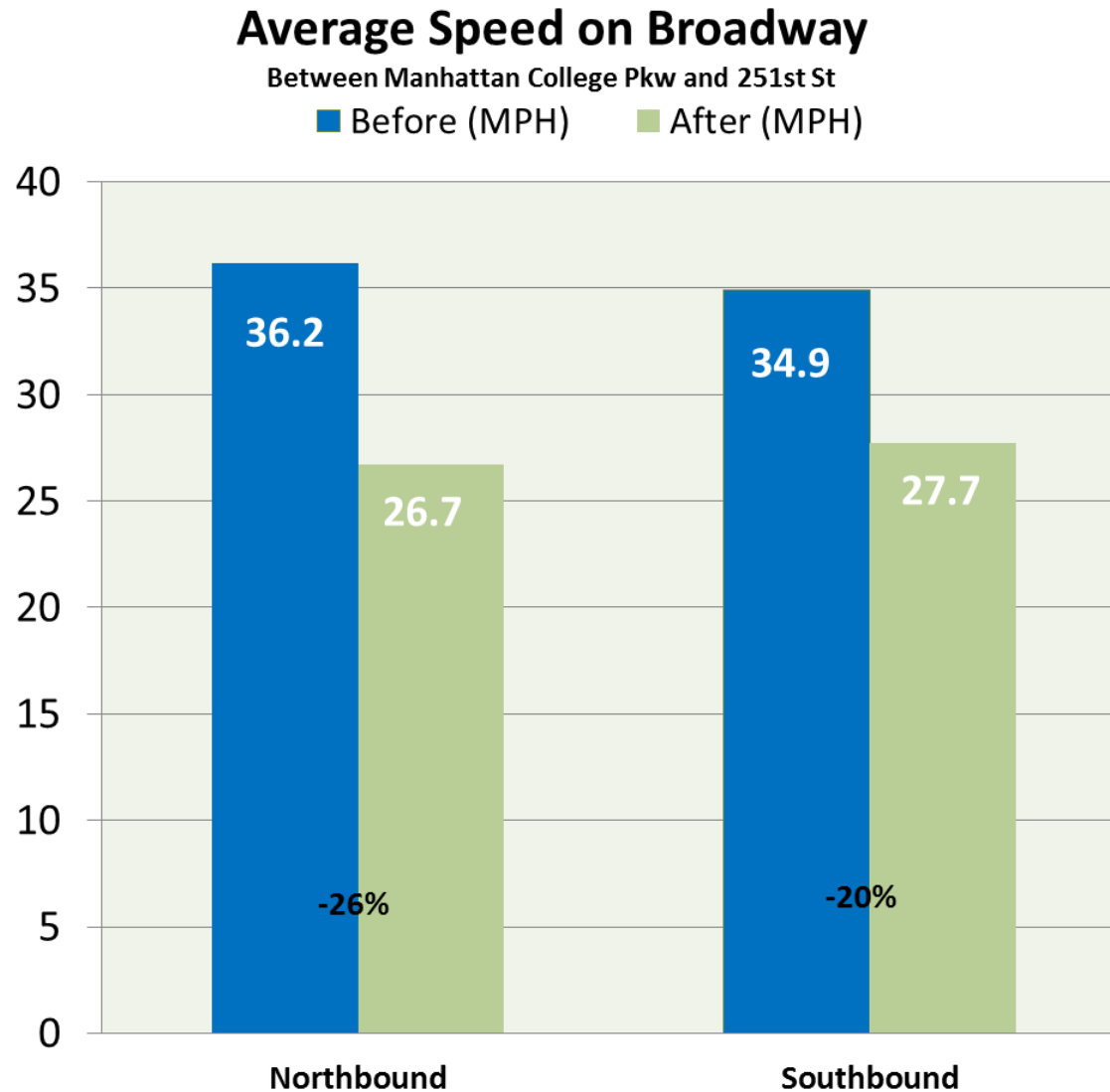


Background



- **7 fatalities on Broadway**
2008 - 2012
- **2012 DOT Traffic Calming Project**
narrowed the travel lanes between Manhattan College Parkway and Westchester County
- **2015 CM Andrew Cohen Request**
DOT study safety improvements on Broadway for pedestrians and cyclists

Speeding



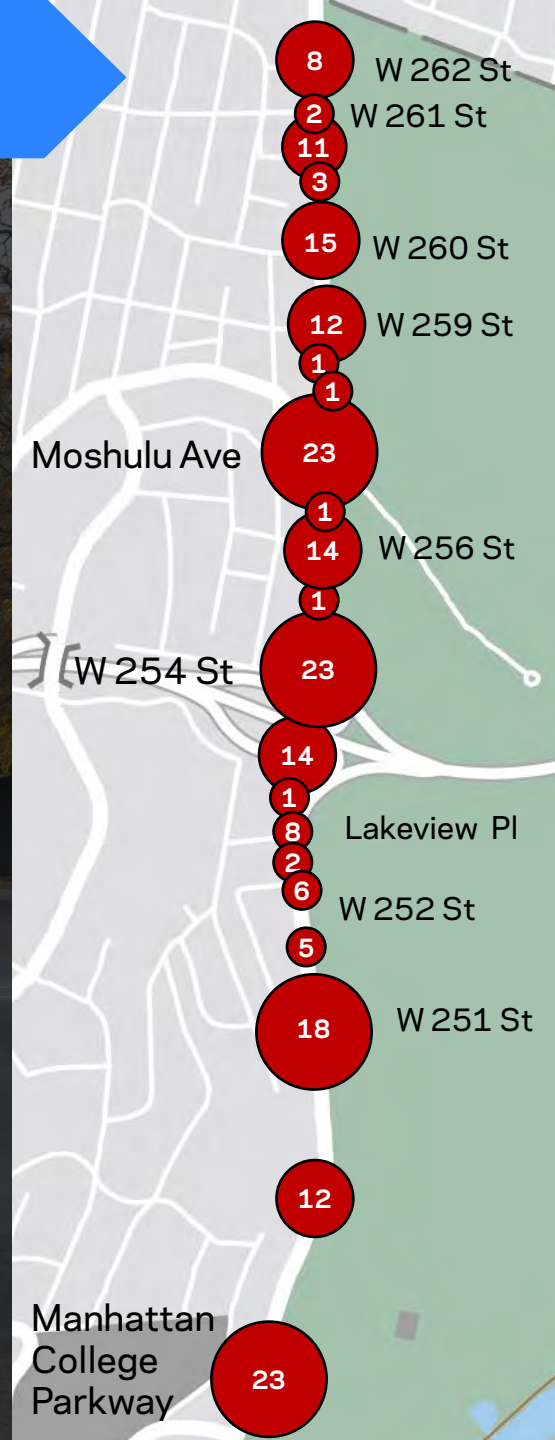
Results of 2012 Broadway Traffic Calming

- Reduced the total amount of crashes by 7%
- Reduced the total amount of crashes with injuries by 12%
- Reduced total pedestrian injuries by 48%
- Two fatalities occurred (2014 and 2015) after the traffic calming

Crash Data

2010-2014

Broadway still ranks in the top third of Bronx Corridors with 8.1 people killed or severely injured per mile (including 6.7 pedestrians killed or severely injured) per mile



Existing Conditions

Long Distances Between Signalized Crossings

Only 10 signalized intersections along the entire 1.5 mile corridor



Broadway at W 256 St

PEDESTRIAN PARK ENTRANCE	1
SIGNALIZED	*
BUS STOP	●
SUBWAY STATION	1
PEDESTRIAN GENERATOR	■



Existing Conditions

Long Diagonal Pedestrian Crossings

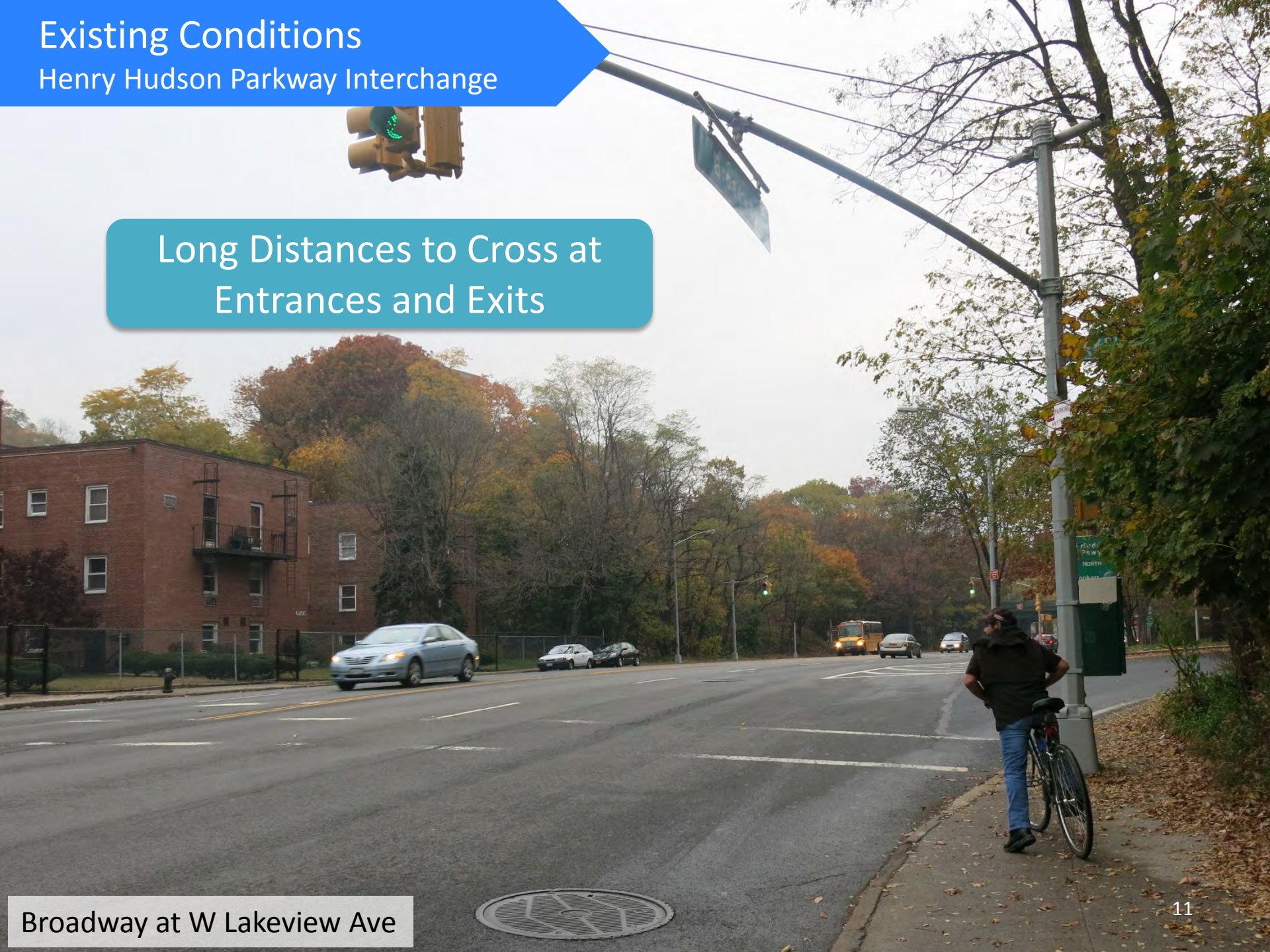


120' Crossing

Existing Conditions

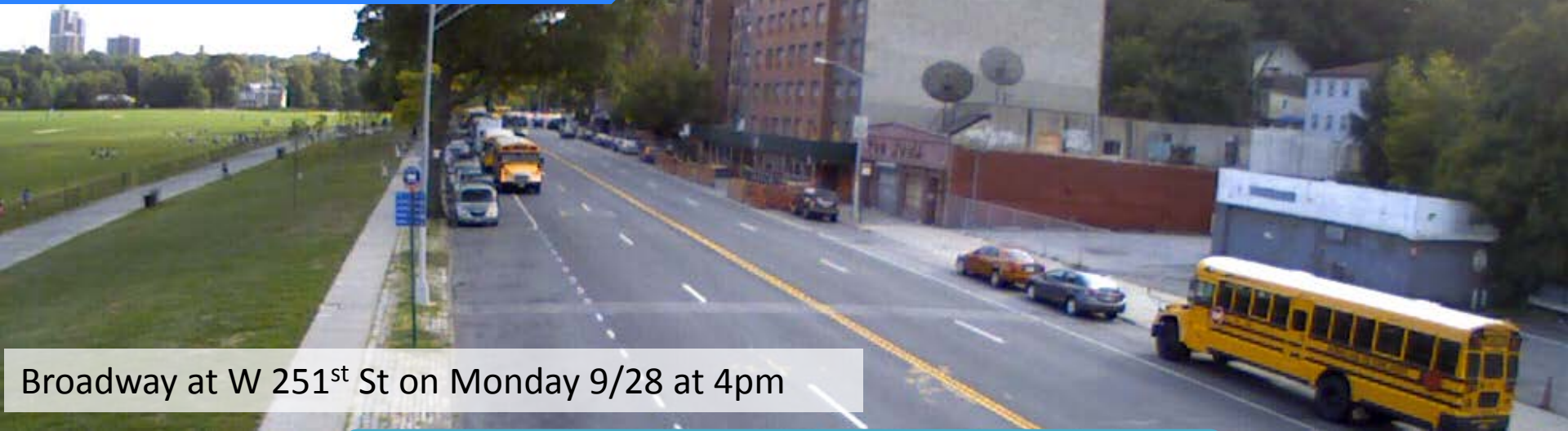
Henry Hudson Parkway Interchange

Long Distances to Cross at
Entrances and Exits



Existing Conditions

Double Parking



Broadway at W 251st St on Monday 9/28 at 4pm

Park Usage Results in Double Parking



Broadway at W 251st St on Saturday 9/26 at 11am

Public Engagement Survey

DOT Street
Ambassadors surveyed
456 people about their
usage of Broadway

42% of respondents
accessed Van Cortlandt
Park by foot

An additional 41%
accessed Van Cortlandt
Park by bus or subway



Public Engagement Survey

58% of respondents would go to the park more often if it were easier to cross Broadway

Speeding is the biggest concern of survey respondents

Public Engagement

Bicycle Lanes

“Add more bike lanes!”

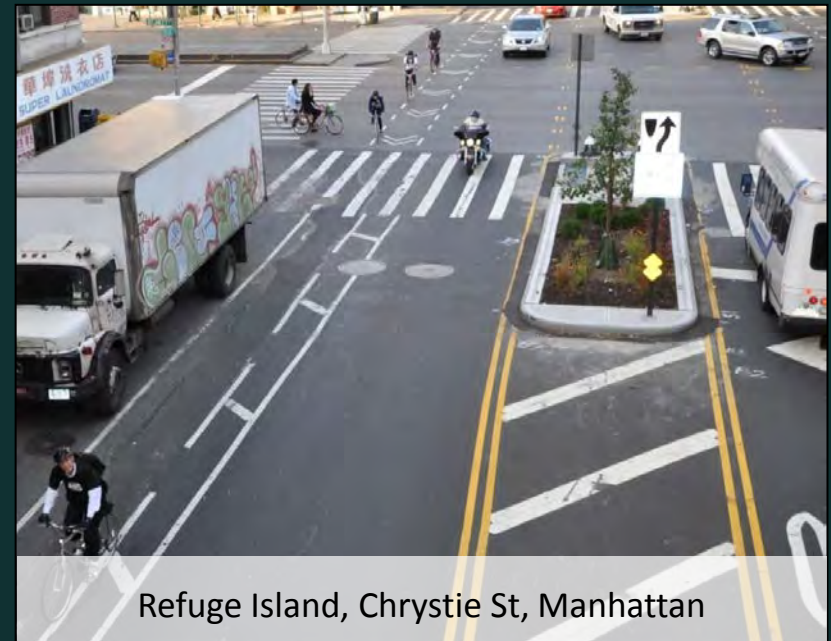
“You always have to be alert when you’re a pedestrian on Broadway. It’s very hostile. I’d like there to be bike lanes to keep cyclists off the sidewalk.”

“I don’t bike in the City, but I would if there were better lanes going to and from the park.”

“Reckless driving in general is an issue. I would like to bike around here, especially if there was a protected bike lane on Broadway along the park.”

Rapid Response Tool Kit

- Pavement markings
- Signals
- Concrete
- New signage
- Painted and/or textured surfaces
- Flexible delineators



Refuge Island, Chrystie St, Manhattan

Rapid Response Tool Kit

- Pavement markings
- Signals
- Concrete
- New signage
- Painted and/or textured surfaces
- Flexible delineators



Concrete Extension, Jewel Ave & 69th Rd, Queens



Ramp Crossing, Pelham Parkway, Bronx

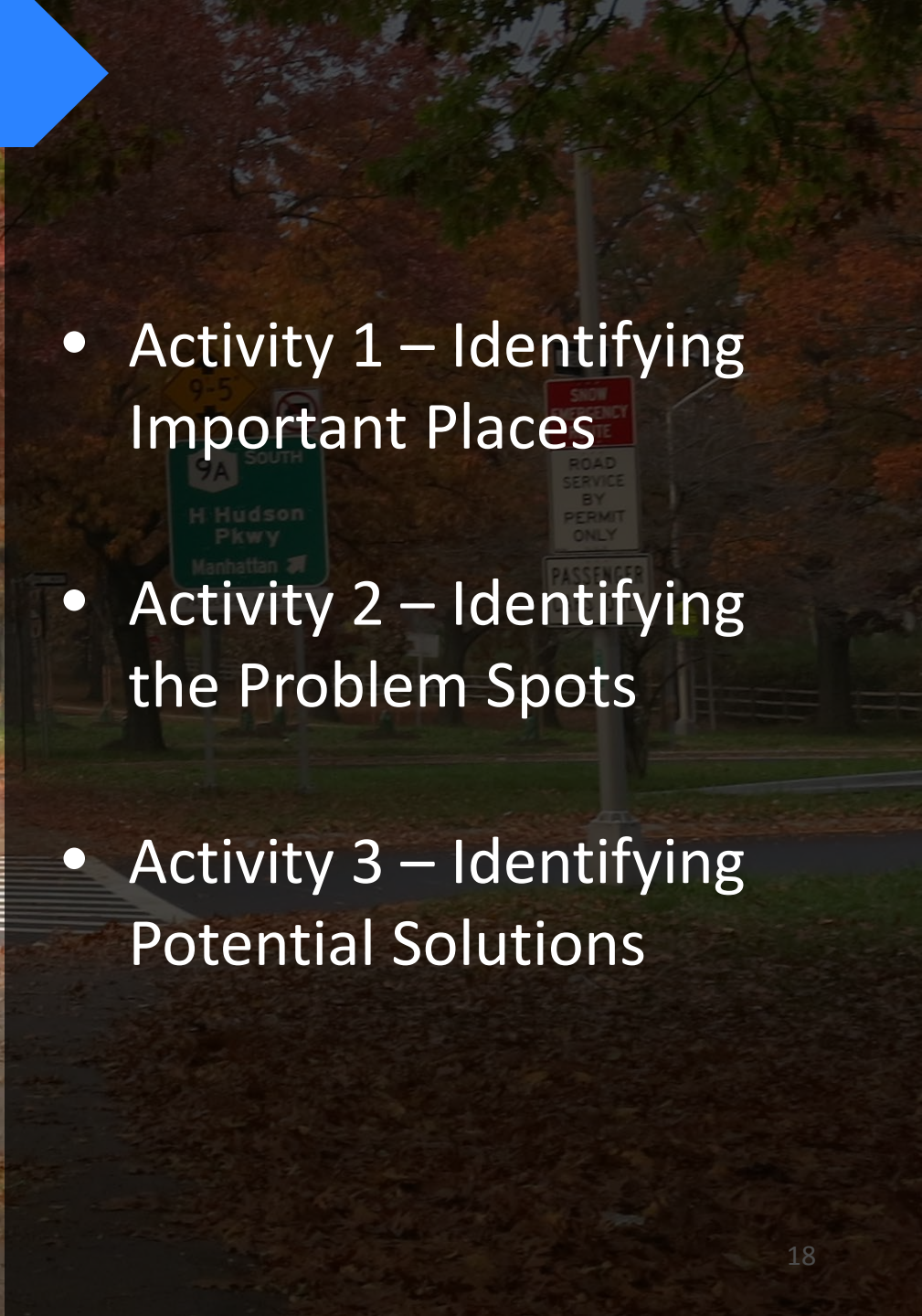


Protected Bike Lane, Prospect Park West, Brooklyn

Mapping Activity



- Activity 1 – Identifying Important Places
- Activity 2 – Identifying the Problem Spots
- Activity 3 – Identifying Potential Solutions





Questions?

Thank
You