



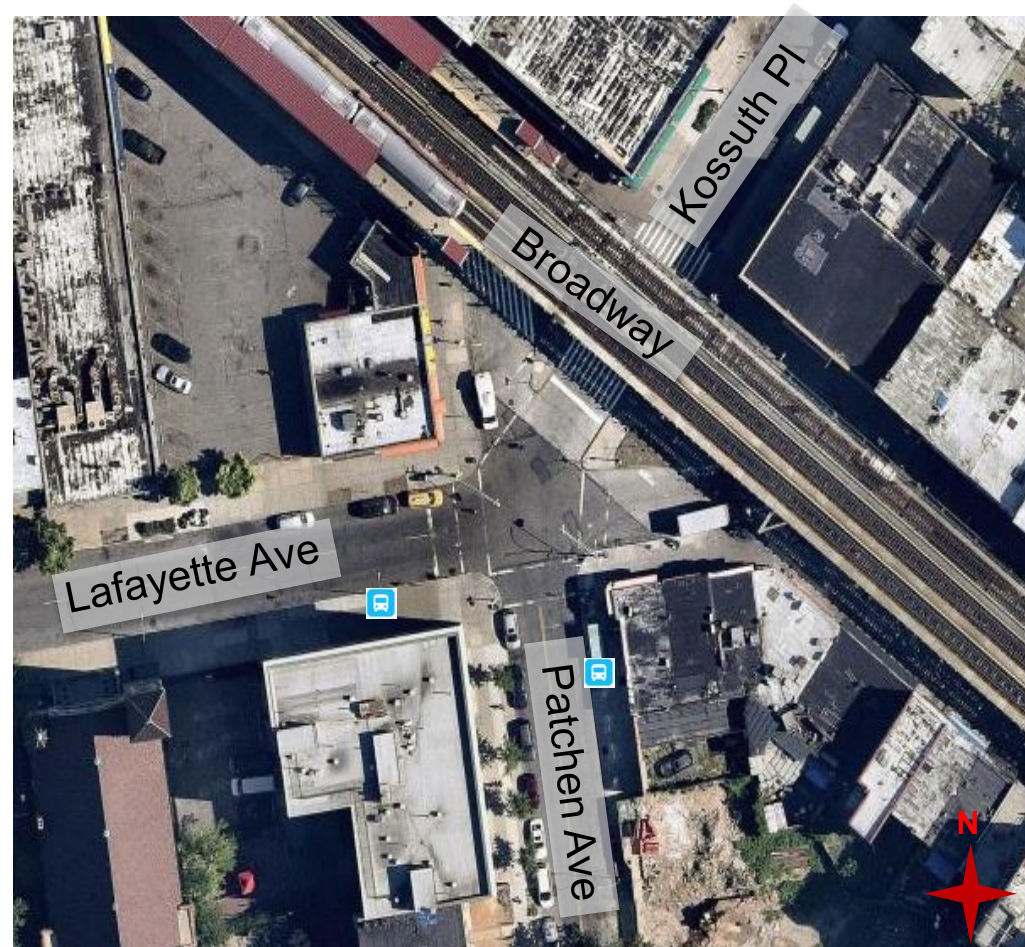
# BROADWAY, LAFAYETTE AVE AND PATCHEN AVE

Brooklyn Community Board 3  
March 2020



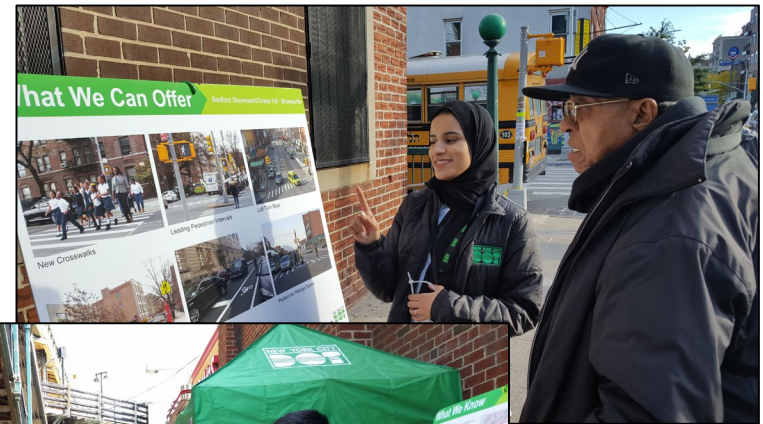
# PROJECT LOCATION

- Multi-leg intersection, located on the border of Bushwick and Bedford-Stuyvesant
- B38 and Q24 Bus stations and Kosciuszko Street (J) station
- Primarily commercial land use along Broadway, with residential land use along Patchen Ave and Lafayette Ave
- Broadway is a local truck route
- The intersection falls within a Senior Pedestrian Focus Area



# NYC DOT OUTREACH

- Throughout 2018, NYC DOT Street Ambassadors conducted extensive outreach in Bedford Stuyvesant & the Ocean Hill-Brownsville neighborhoods
- Respondents were asked what safety treatments they would most like to see in their neighborhood from NYC DOT's toolbox.
  - Over half of the respondents requested more pedestrian refuge space
- Vehicles failing to yield was the top concern for pedestrians surveyed within Community Board 3



# SAFETY DATA

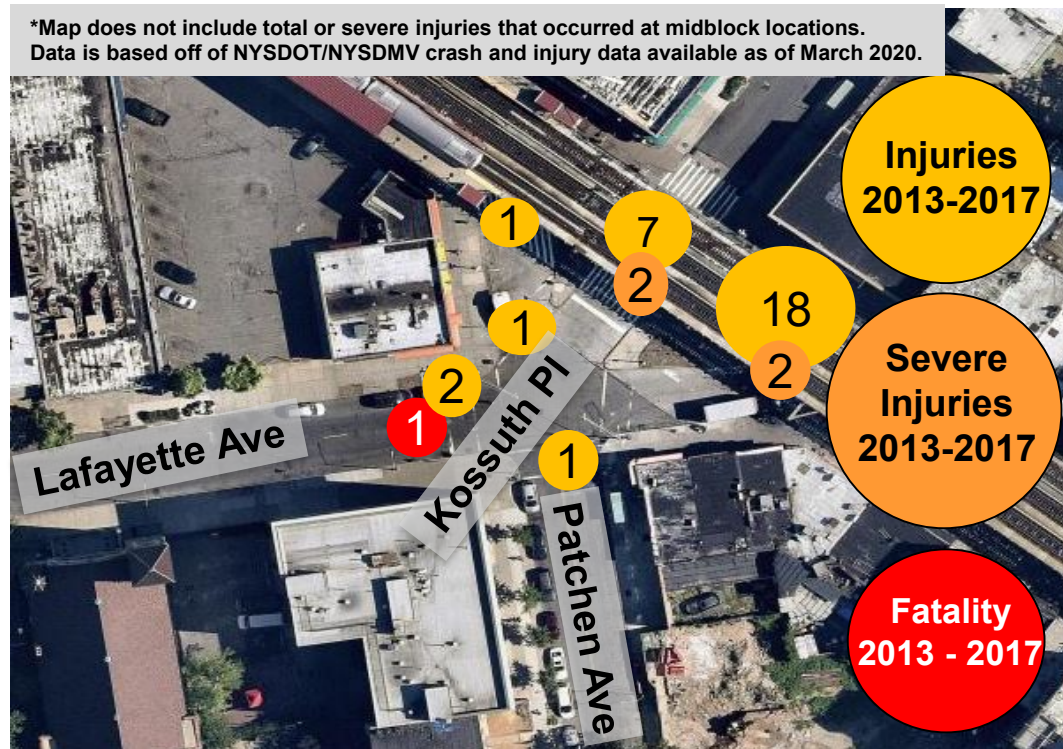
- **Broadway is a Vision Zero Priority Corridor**
- 59% of crashes are vehicle on vehicle; with a majority of them being rear end or left turn crashes caused by sudden stopping or a failure to yield to other vehicles
- Majority of pedestrian or cyclist crashes involved vehicles making a left turn, or were head on crashes
- 1 pedestrian fatality at the west crosswalk of Lafayette Ave and Patchen Ave in 2015

## Broadway - Lafayette Ave to Patchen Ave, BK Injury Summary, 2013-2017 (5 Years)

	Total Injuries	Severe Injuries	Fatalities	KSI
Pedestrian	8	2	1	3
Bicyclist	3	0	0	0
Motor Vehicle Occupant	20	2	0	2
<b>Total</b>	<b>31</b>	<b>4</b>	<b>1</b>	<b>5</b>

Fatalities, 01/01/2013-2/24/2020 : 1

Source: Fatalities: NYCDOT  
Injuries: NYSDOT  
KSI: Persons Killed or Severely Injured



# EXISTING CONDITIONS

Patchen Ave and Broadway



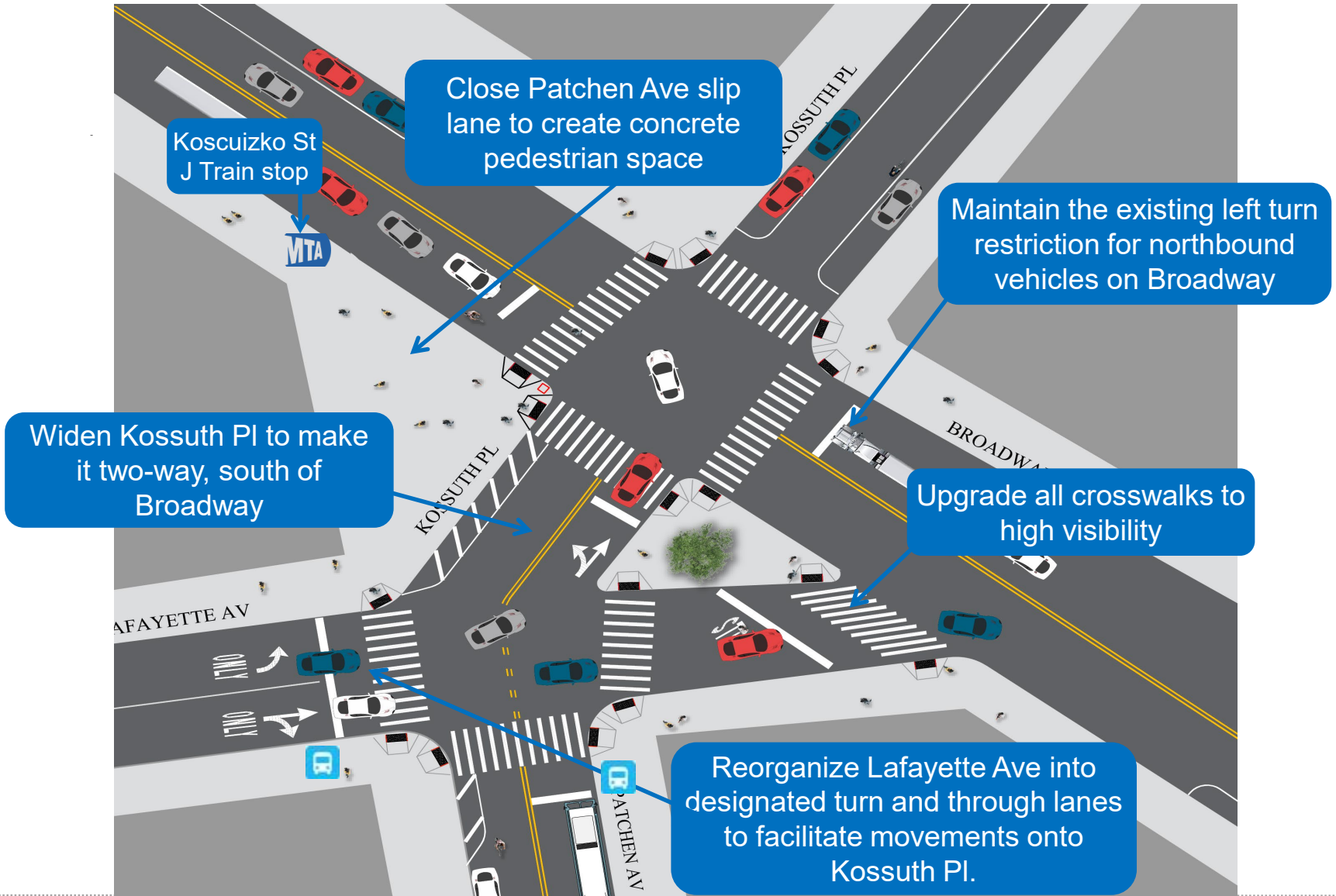
**Unsignalized turns off of Broadway onto Patchen Ave encourage speeding, and create conflicts between vehicles and pedestrians.**

# EXISTING CONDITIONS



**Disjointed crossings and long crossing distances create conflicts between vehicles and pedestrians and encourage unpredictable movements**

# PROPOSAL



# SUMMARY

- Shortens crossing distances and expands pedestrian space at a busy subway station
- Rerouting of southbound right off of Broadway onto Kossuth Pl will encourage slower, safer turns off Broadway
- Improves visibility and clarity of roadway movements for drivers and pedestrians
- Closing of Patchen Ave slip lane discourages speeding and removes conflicts between vehicles and pedestrians





# THANK YOU!

## Questions?



NYC DOT



NYC DOT



nyc\_dot



NYC DOT

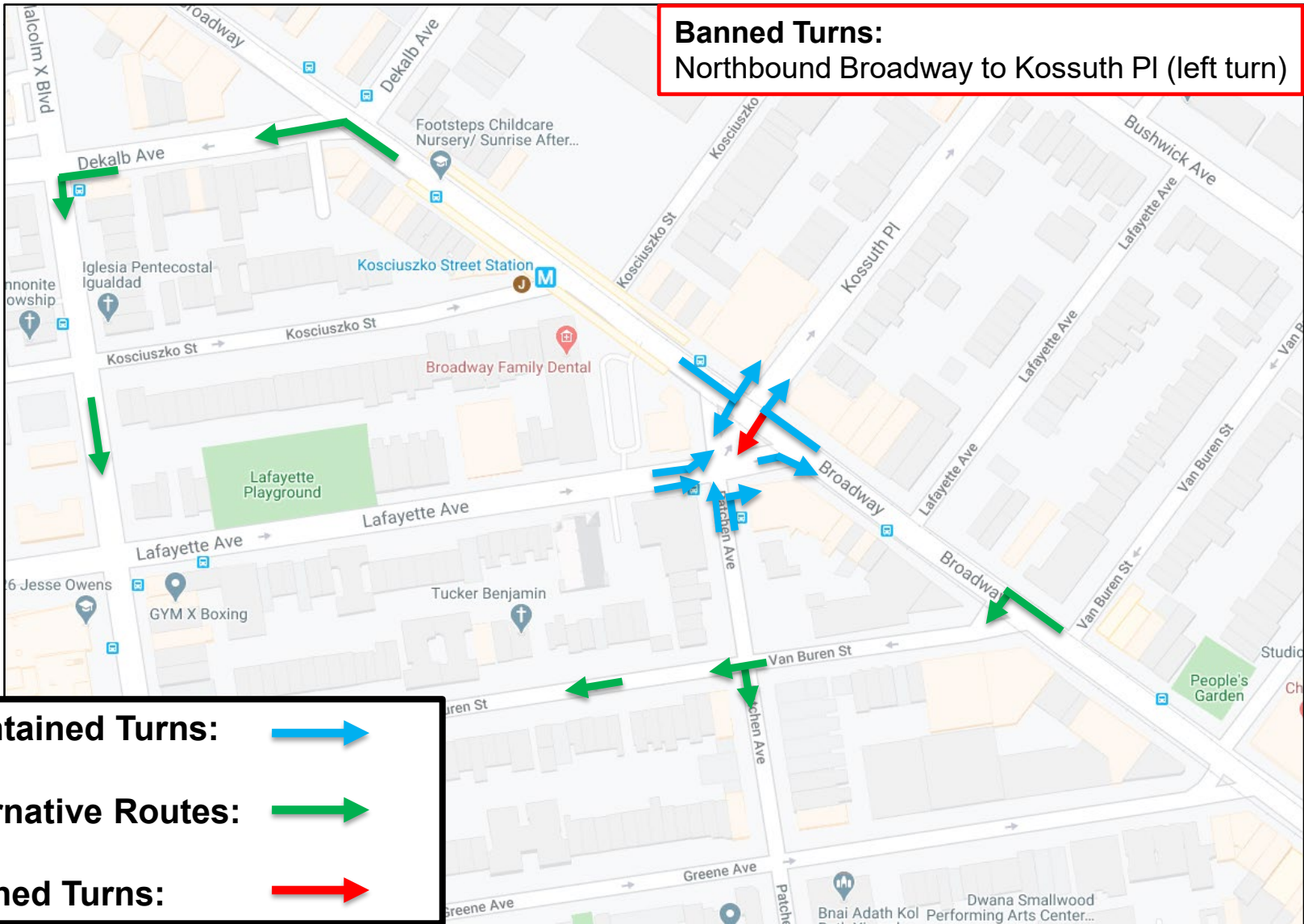
# APPENDIX


---




# TURN BANS AND ALTERNATE ROUTES

**Banned Turns:**  
Northbound Broadway to Kossuth PI (left turn)



**Maintained Turns:** 

**Alternative Routes:** 

**Banned Turns:** 