

# Sherman Creek/Inwood Traffic Study



April 5, 2010

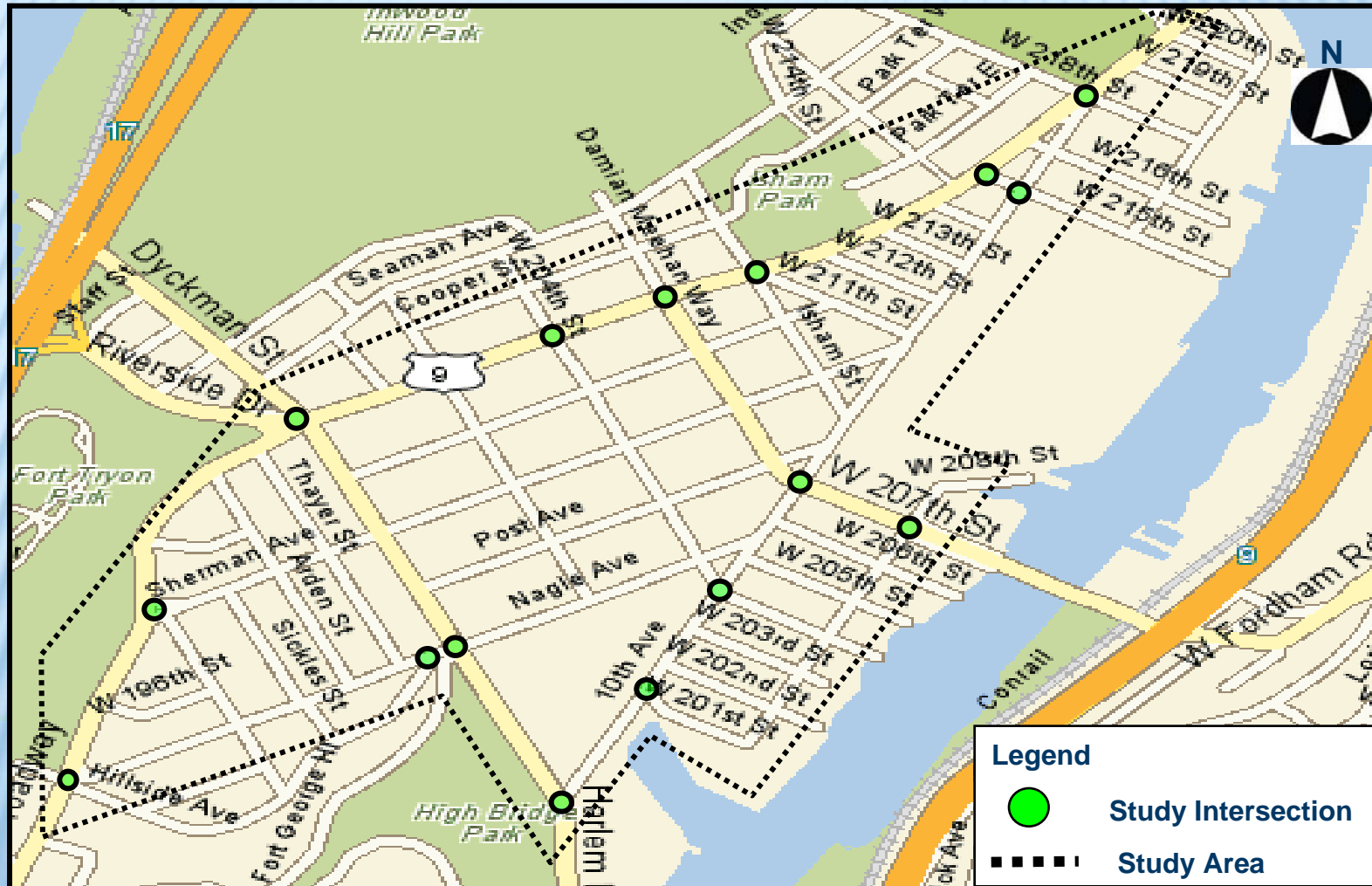
# Background

- Identify existing and future traffic related problems and deficiencies
- Reevaluate and augment safety and operational improvements proposed in the November 2004 *Baseline Transportation Assessment For Sherman Creek*
- Reformulate recommendations based on additional data and new findings to serve as a basis for *Preliminary Design and Investigation (PDI)* reports for selected identified locations

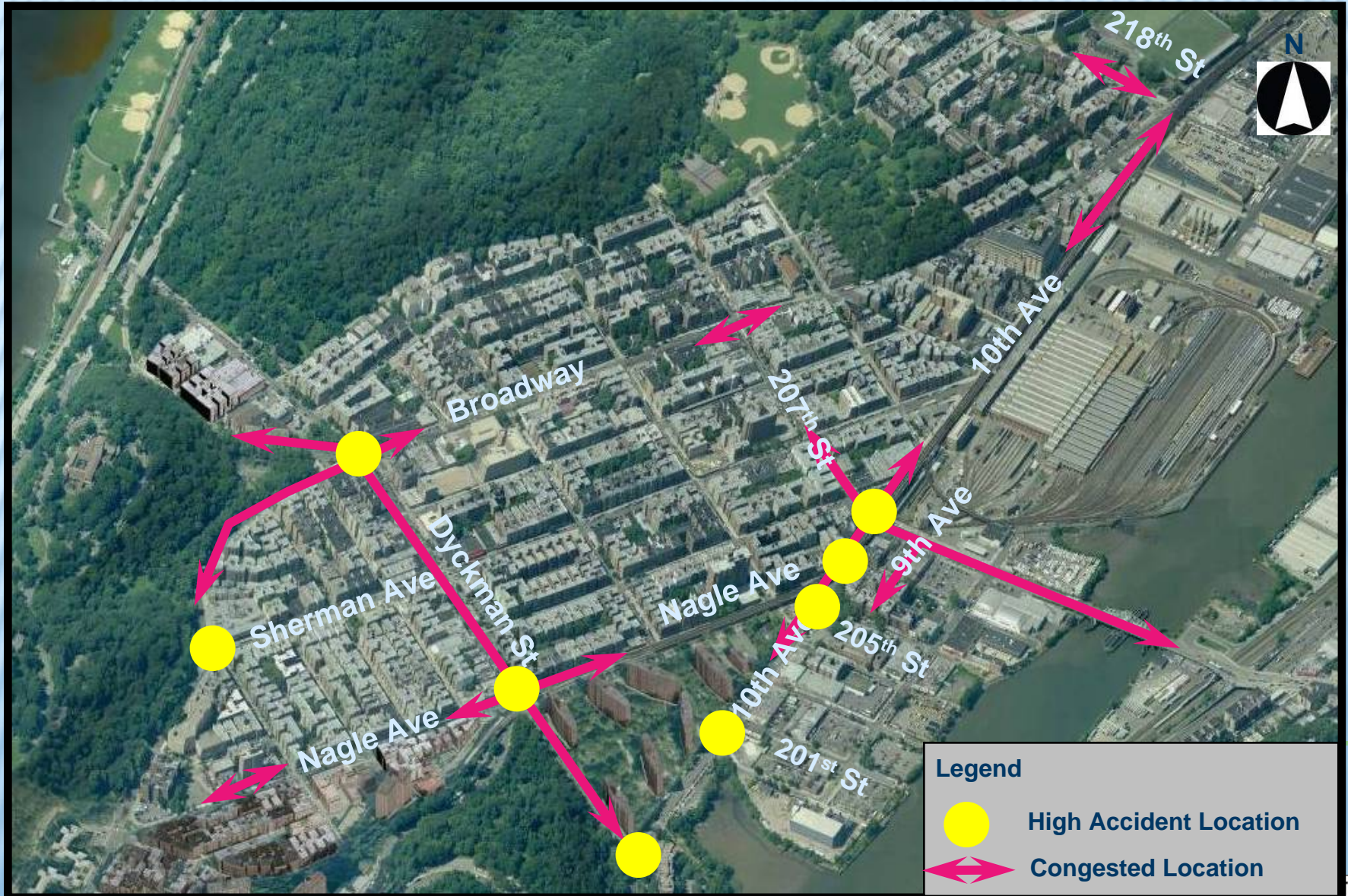


# Study Area

- 218<sup>th</sup> St to the north, 9<sup>th</sup> Ave to the east, Hillside Ave to the south, and Broadway to the west

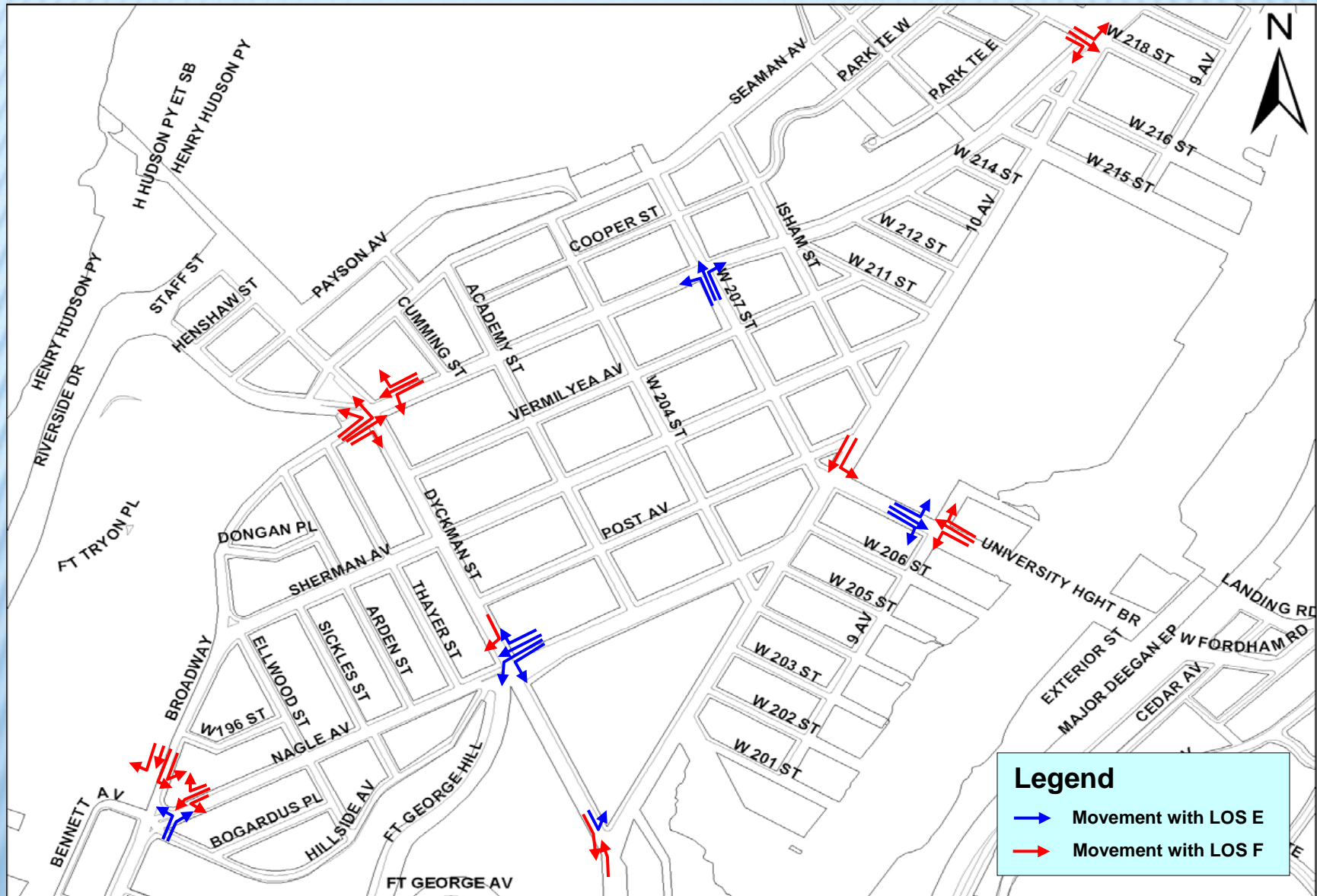


# Key Locations

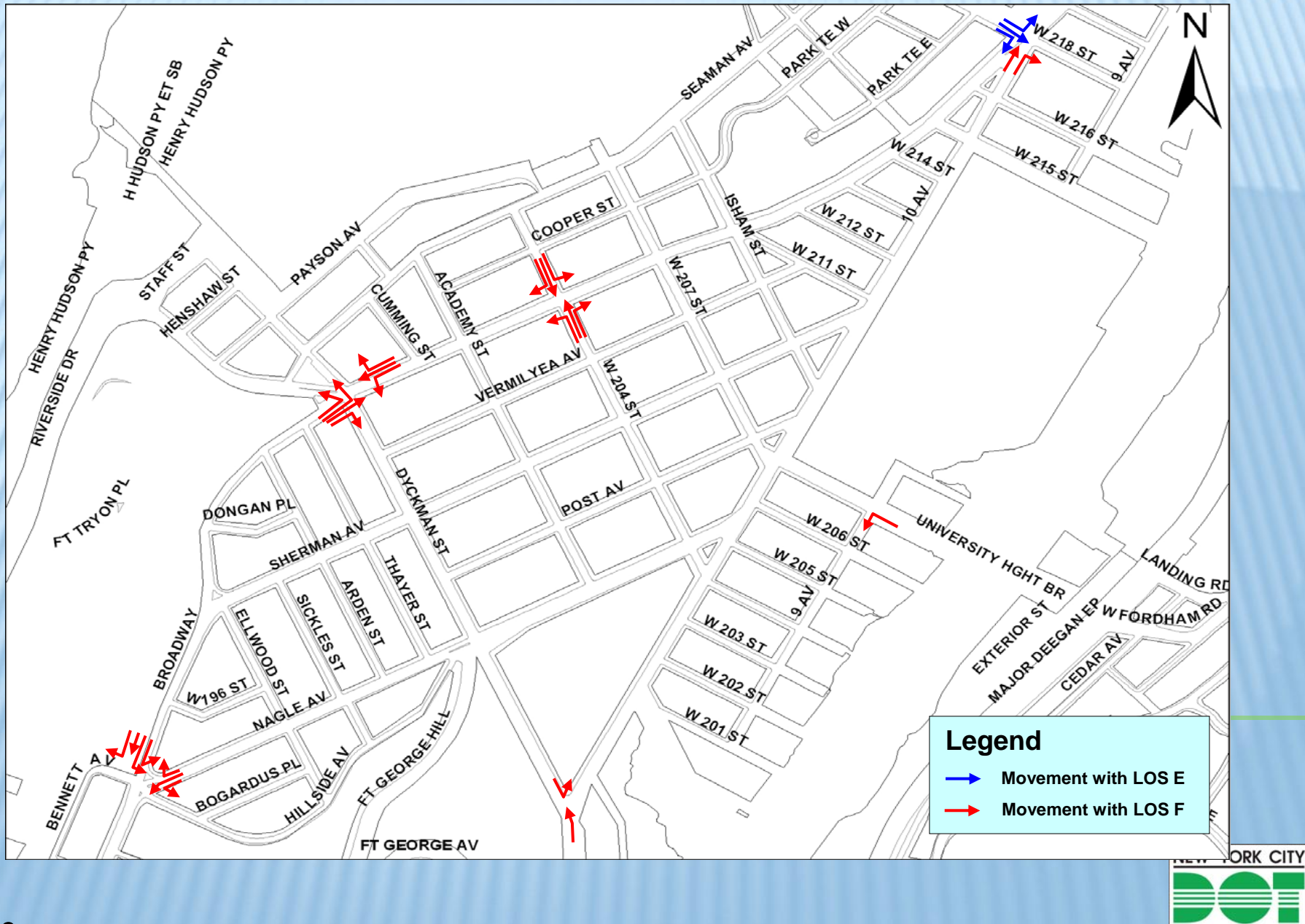




# LOS Summary – 2034 No Build AM Peak Hour

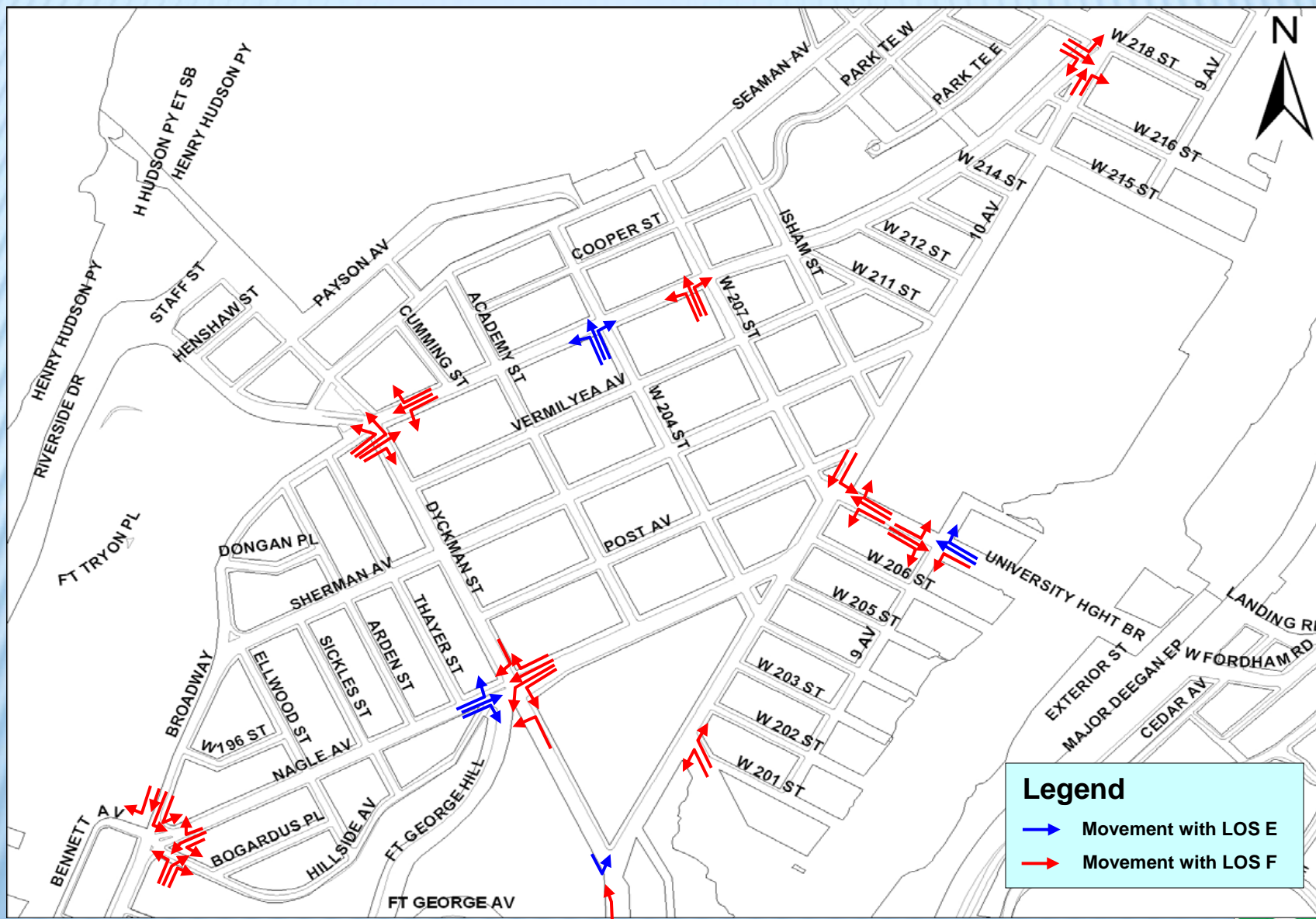


# LOS Summary – 2034 No Build Midday Peak Hour

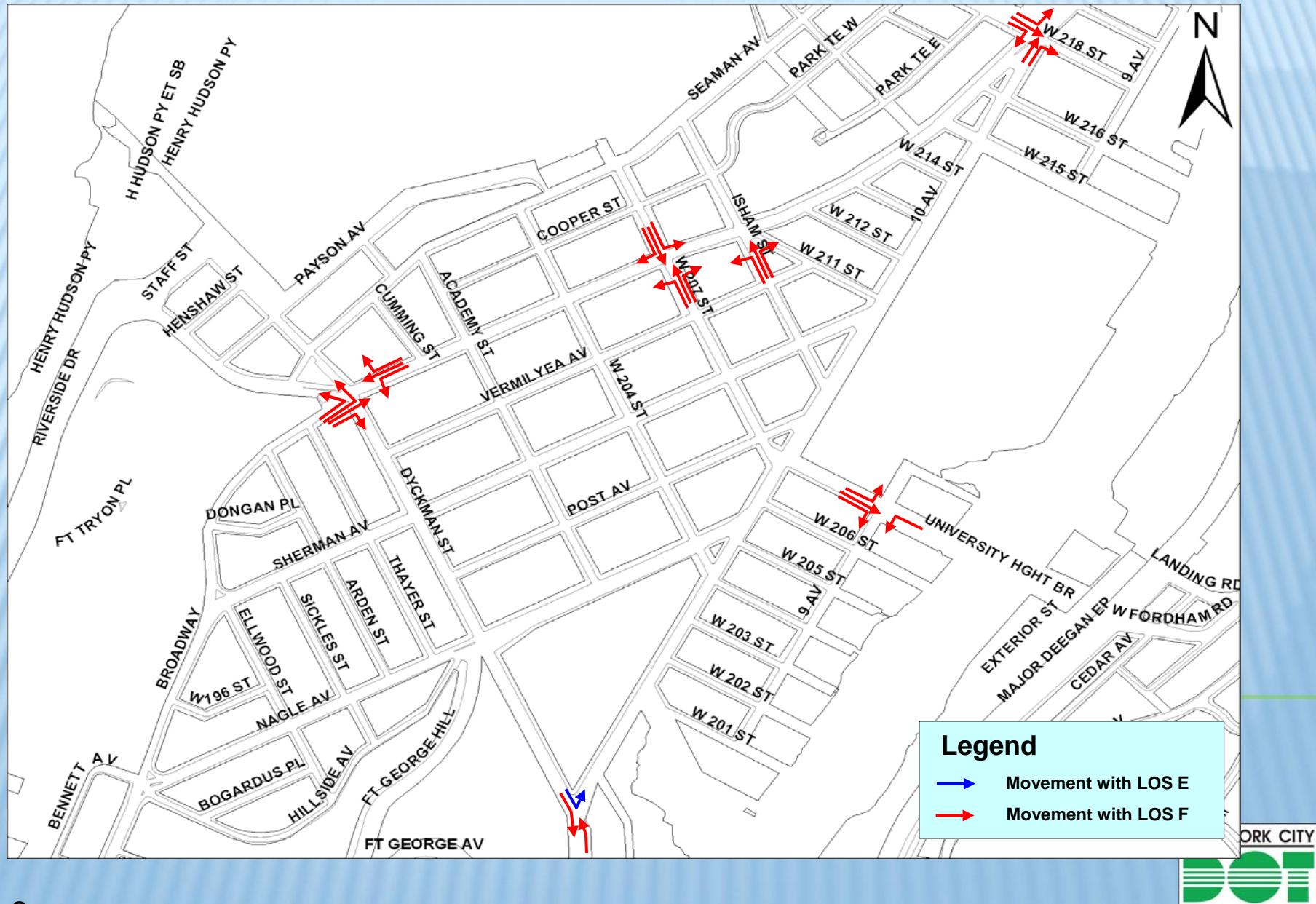




# LOS Summary – 2034 No Build PM Peak Hour



# LOS Summary – 2034 No Build Saturday Midday Peak Hour





# Congested Corridor -207th Street

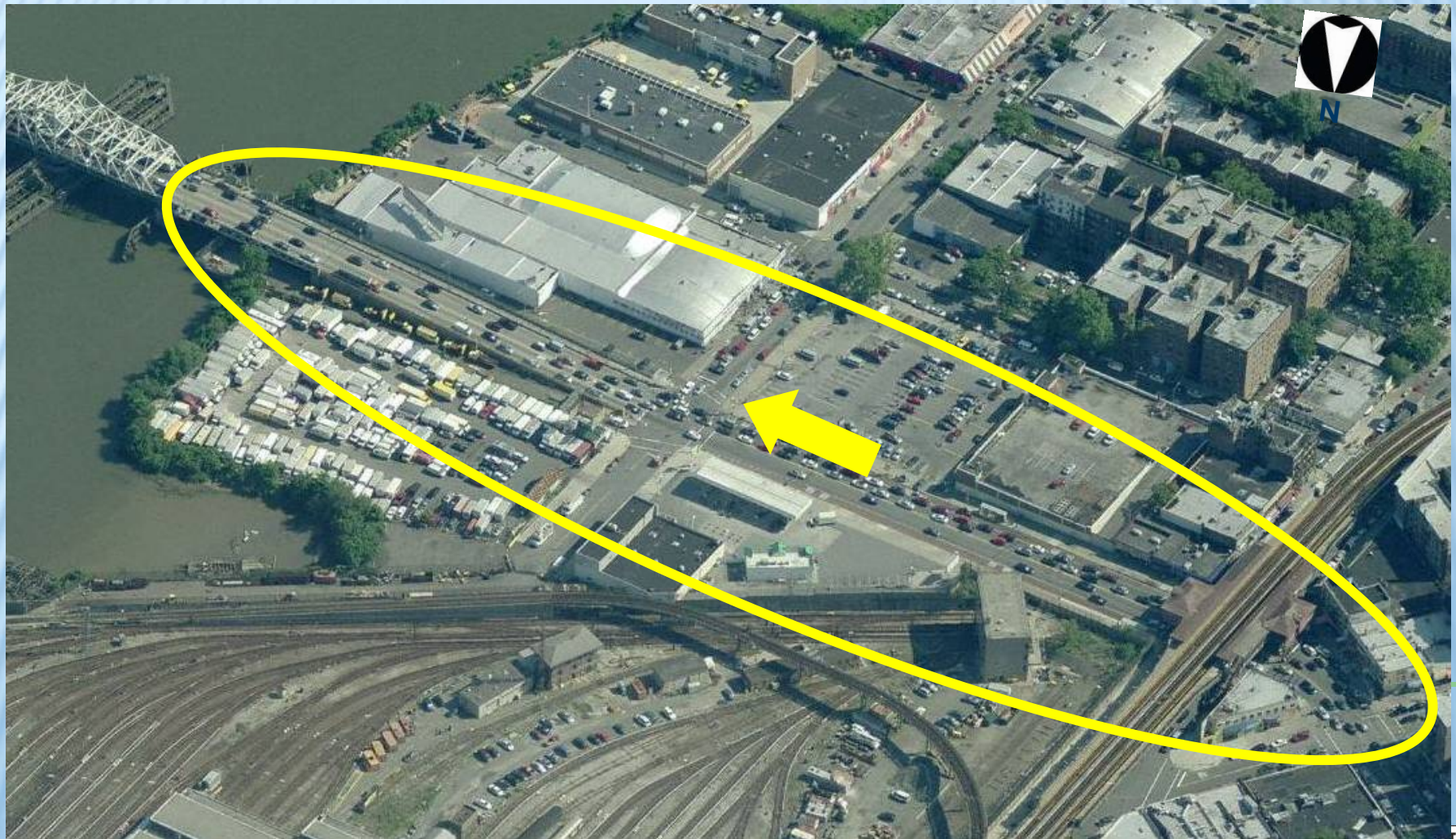
## AM Peak Period





# Congested Corridor -207<sup>th</sup> Street

## PM Peak Period





# 207<sup>th</sup> St between 9<sup>th</sup> Ave and 10<sup>th</sup> Ave



**Westbound 207<sup>th</sup> St at 9<sup>th</sup> Ave**



**Eastbound/westbound 207<sup>th</sup> St at 9<sup>th</sup> Ave**



**Westbound 207<sup>th</sup> St at 10<sup>th</sup> Ave**

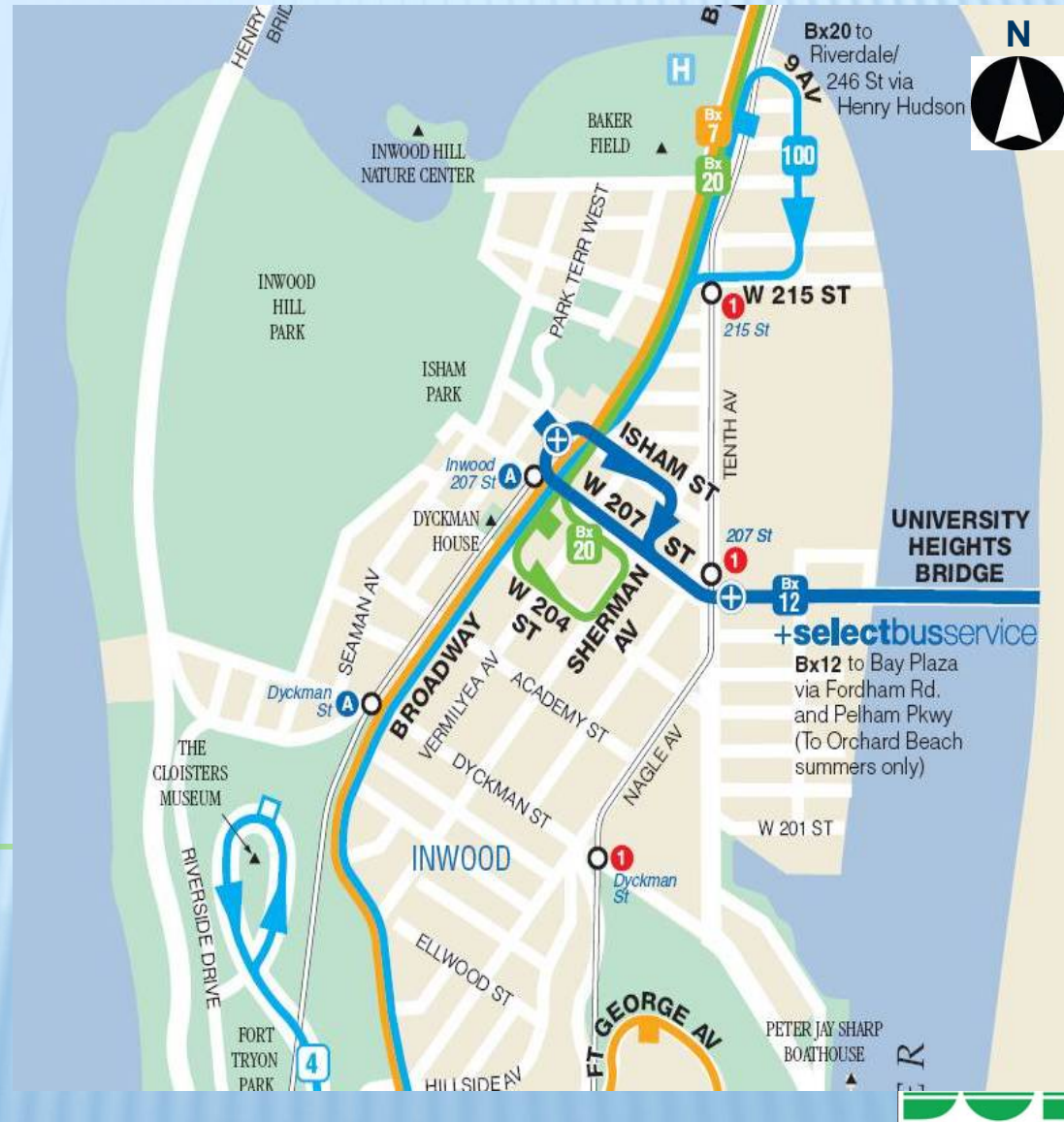


**Northbound/southbound 10<sup>th</sup> Ave at 207<sup>th</sup> St**



# Public Transit

- Four Bus Lines along 204<sup>th</sup> St, 207<sup>th</sup> St, & Broadway (BX7, BX12, BX20, and M100)
- Two Subway Lines (A and 1)





# Bike Routes



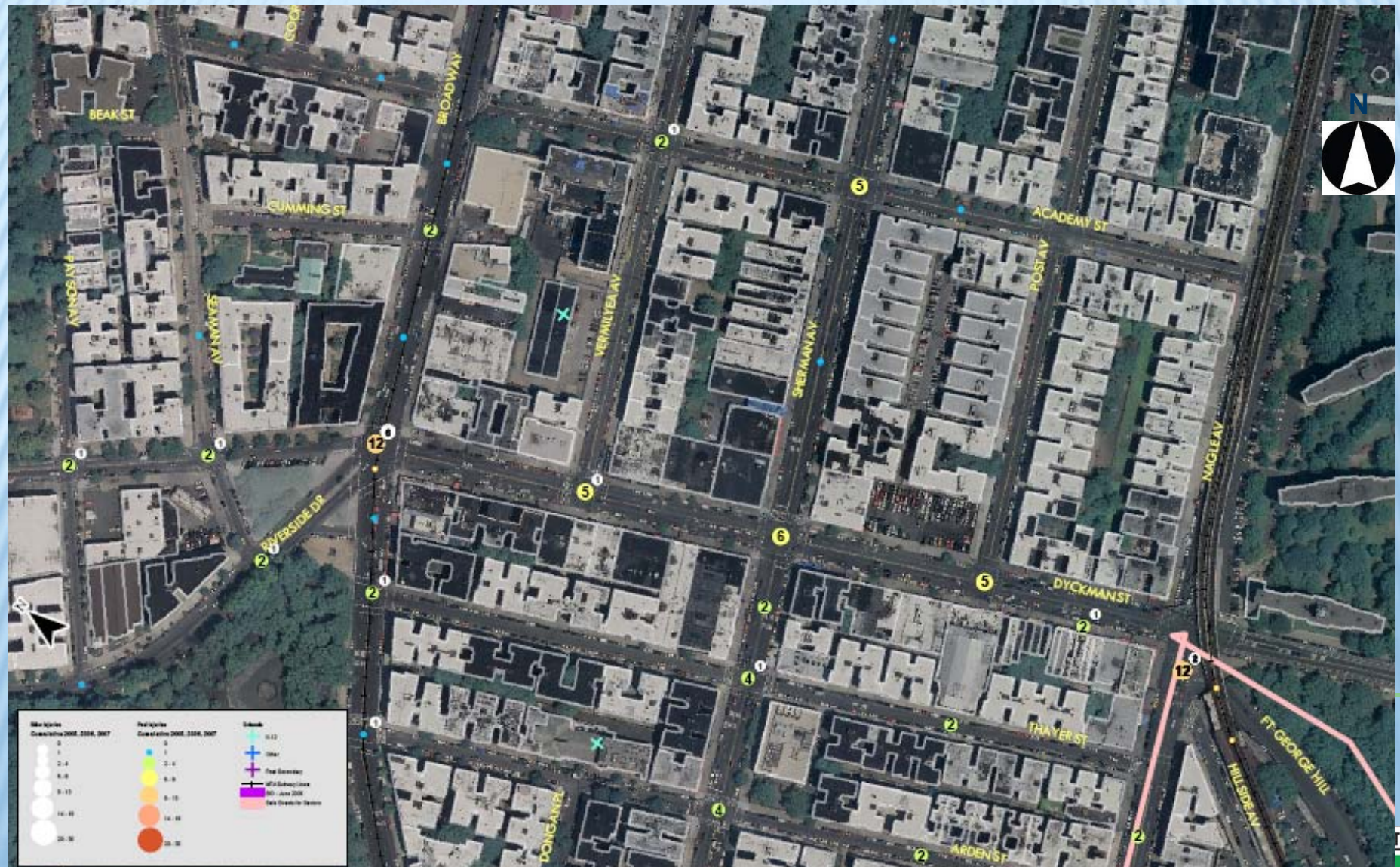


# High Accident Corridor - Dyckman St





# Three-Year(2005-2007) Pedestrian/Bicycle Injuries





# Dyckman St at Broadway & Riverside Dr



**Westbound Vehicles splitting to westbound Dyckman St and Riverside Dr**



**Northbound/southbound Broadway left-turns at Dyckman St/ Riverside Dr**



**Northbound/southbound Broadway turn movements at Dyckman St/ Riverside Dr**



**High pedestrians on east crosswalks of Dyckman St / Broadway**



# Dyckman St Corridor Double Parking & Loading issues





# Dyckman Street at Nagle/Hillside/Fort George



Conflicts between pedestrians and vehicle on Fort George Hill



Conflicts between pedestrians and vehicle on the merge between Hillside Ave and Nagle Ave



Conflicts between pedestrians and westbound left turn vehicle on Nagle Ave and Dyckman St



Eastbound Queues on Dyckman St approaching Nagle Ave



# Dyckman at 10<sup>th</sup> Ave & Harlem River Drive



**No direct crosswalk across Dyckman St at 10<sup>th</sup> Ave  
between residential development and park**



**Northbound 10<sup>th</sup> Ave from Harlem River  
Drive**



**Southbound 10<sup>th</sup> Ave to Harlem River Drive across  
Dyckman St**



**Eastbound Dyckman St to Harlem River Drive**

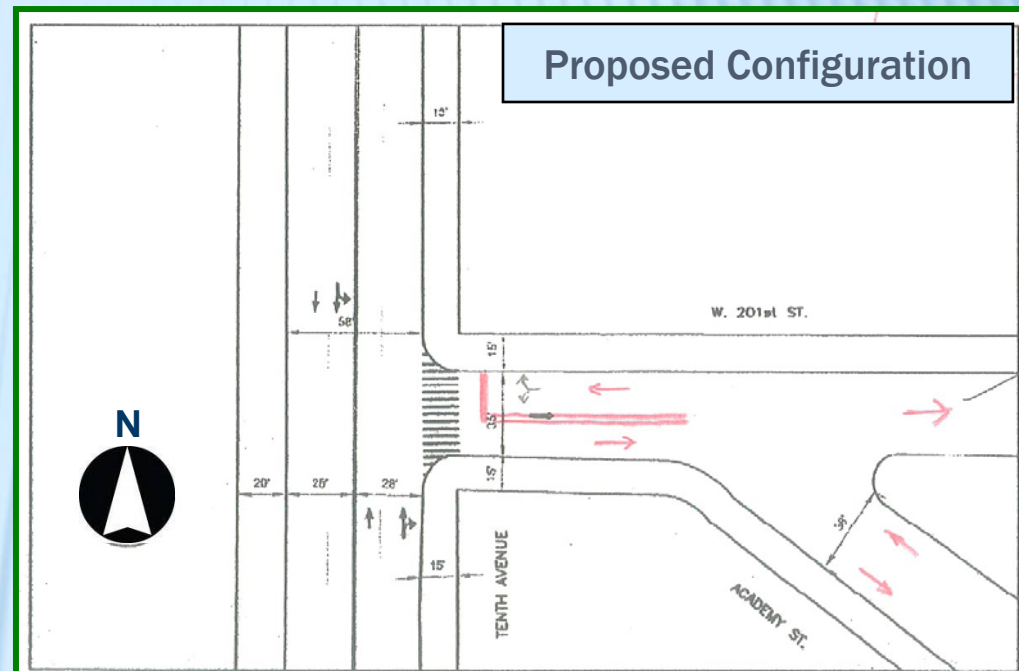
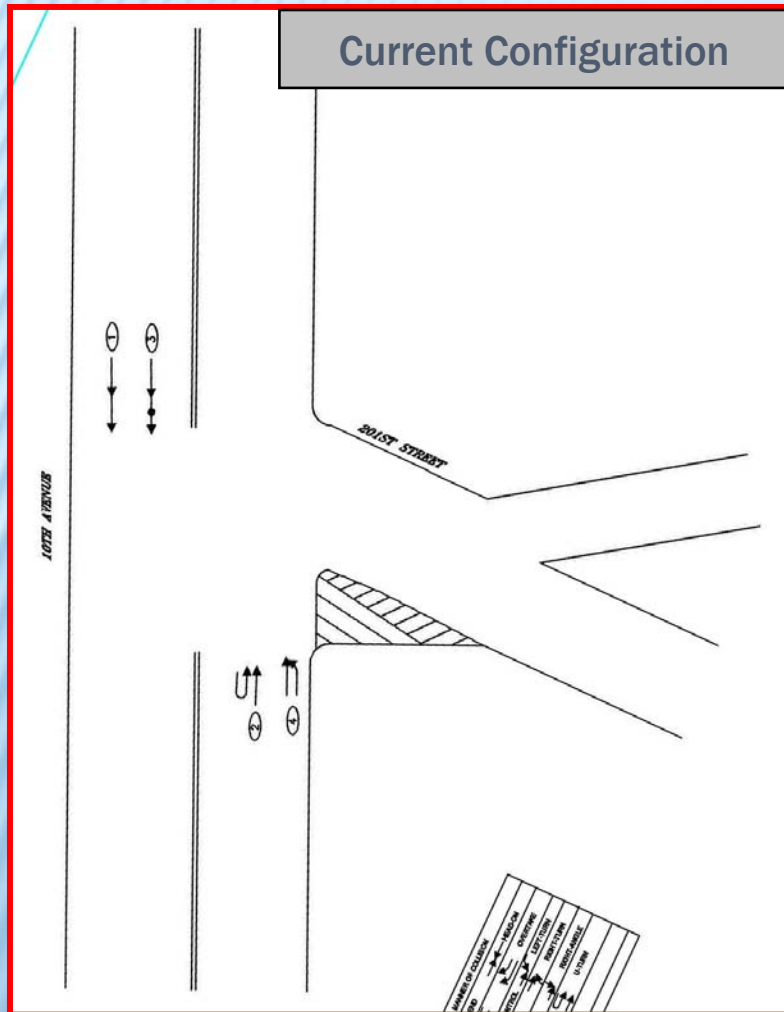
# Consultant's Proposed Improvements

---



# Accident Diagram and Proposed Improvement

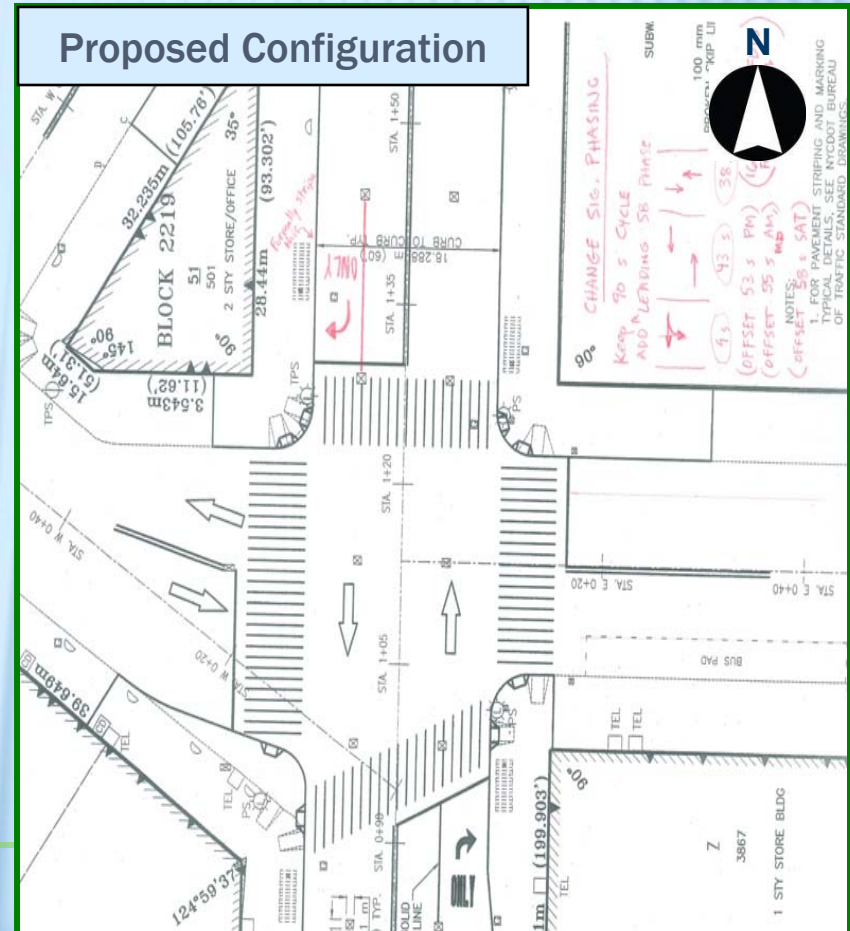
## - 201<sup>st</sup> St and 10<sup>th</sup> Ave -



1. Reconstruction of North curb to eliminate un-used pavement
2. High visibility crosswalk



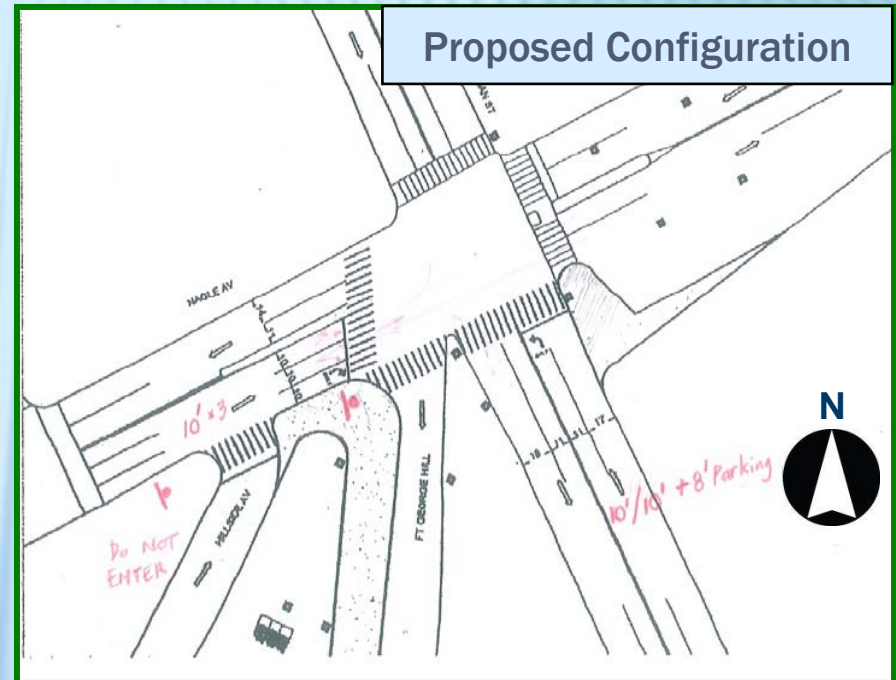
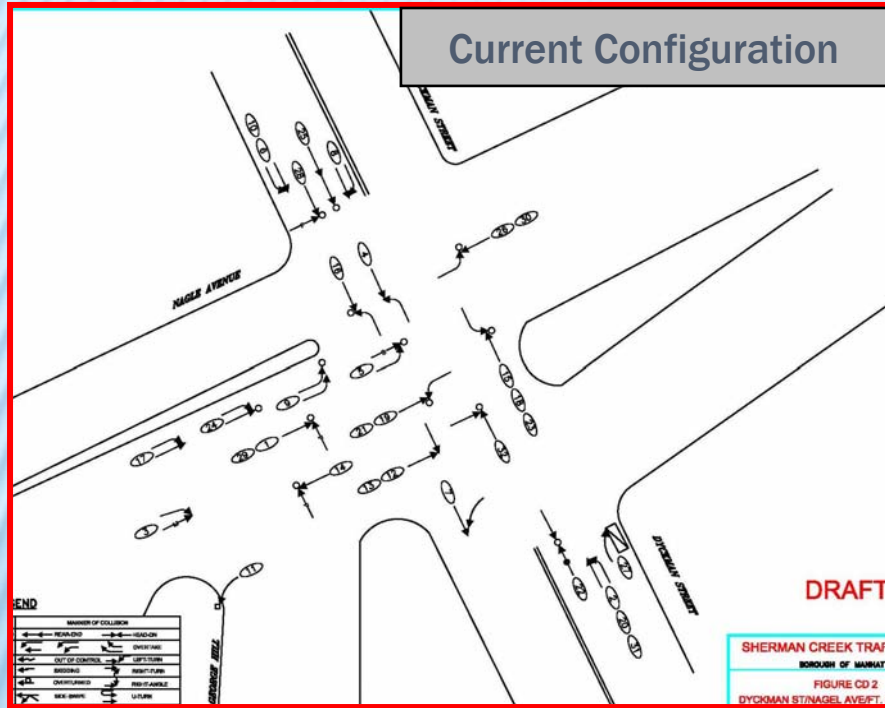
## Current Configuration



1. Pavement marking
2. Signal timing modification



# Accident Diagram and Proposed Improvement - Dyckman St & Nagle Ave & Ft. George Hill -

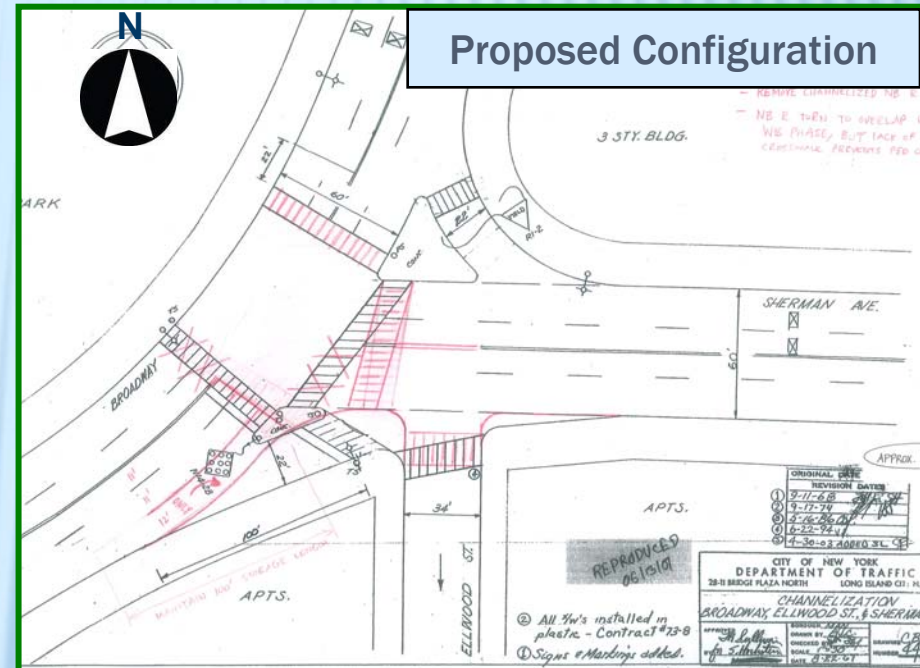
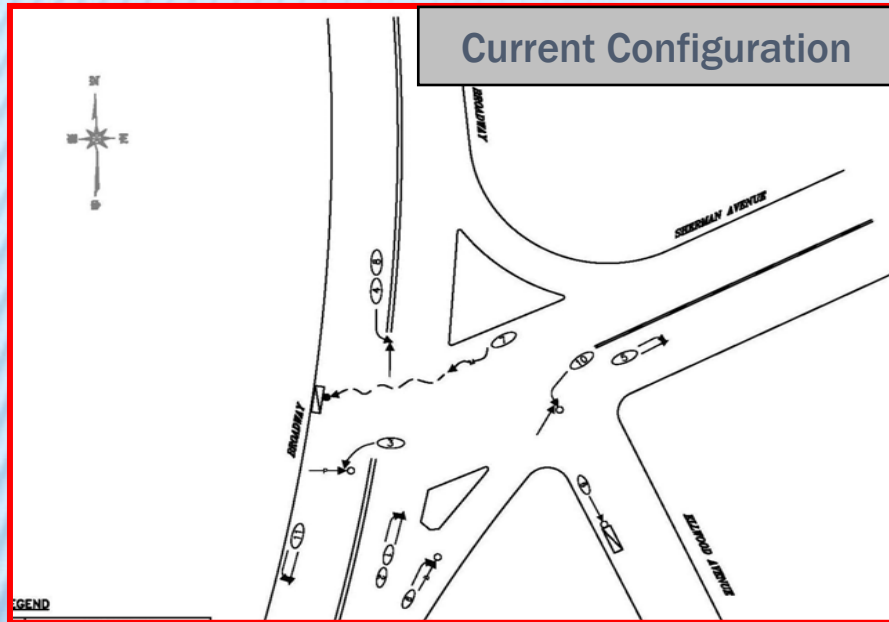


1. Curb reconstruction
2. Pavement marking



# Accident Diagram and Proposed Improvement

## - Broadway & Sherman Ave -



1. Curb extension on South side
2. Redesign of high visibility crosswalks
3. Signal timing modification



- Dyckman St & Broadway & Riverside Dr -

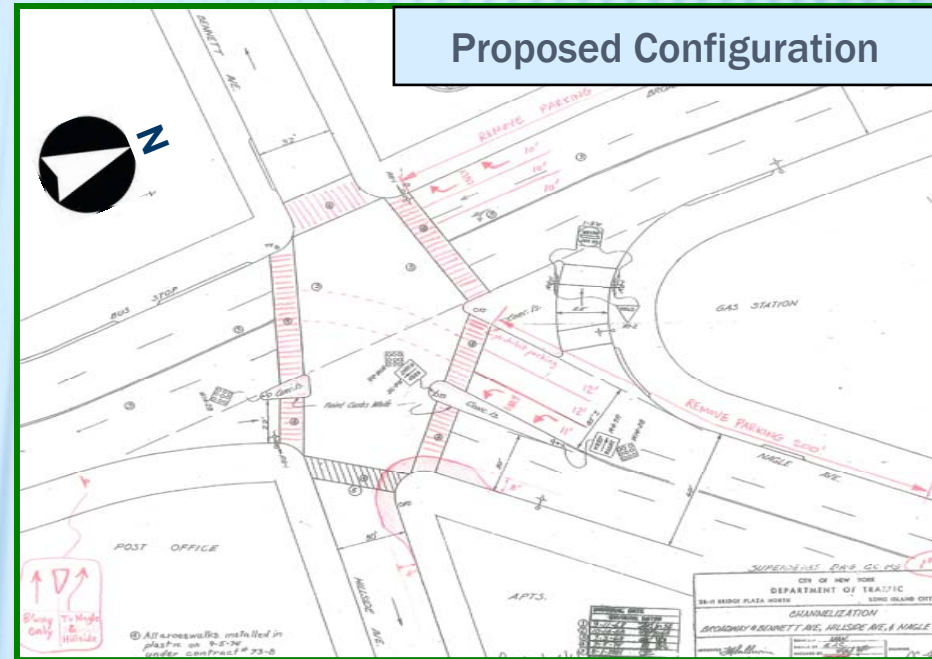
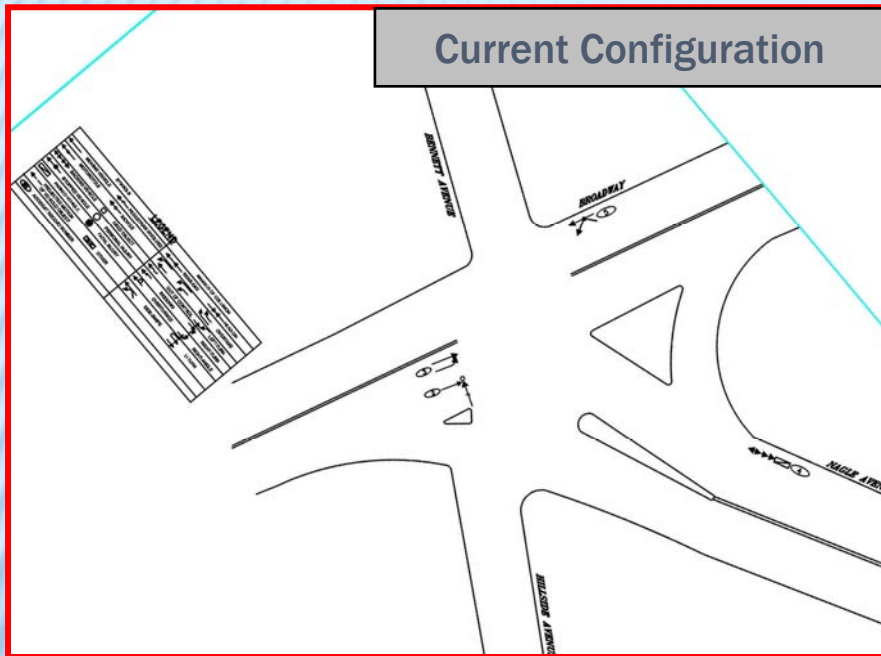


1. NB/SB left-turn lanes with parking removal
2. Signal timing modification



# Accident Diagram and Proposed Improvement

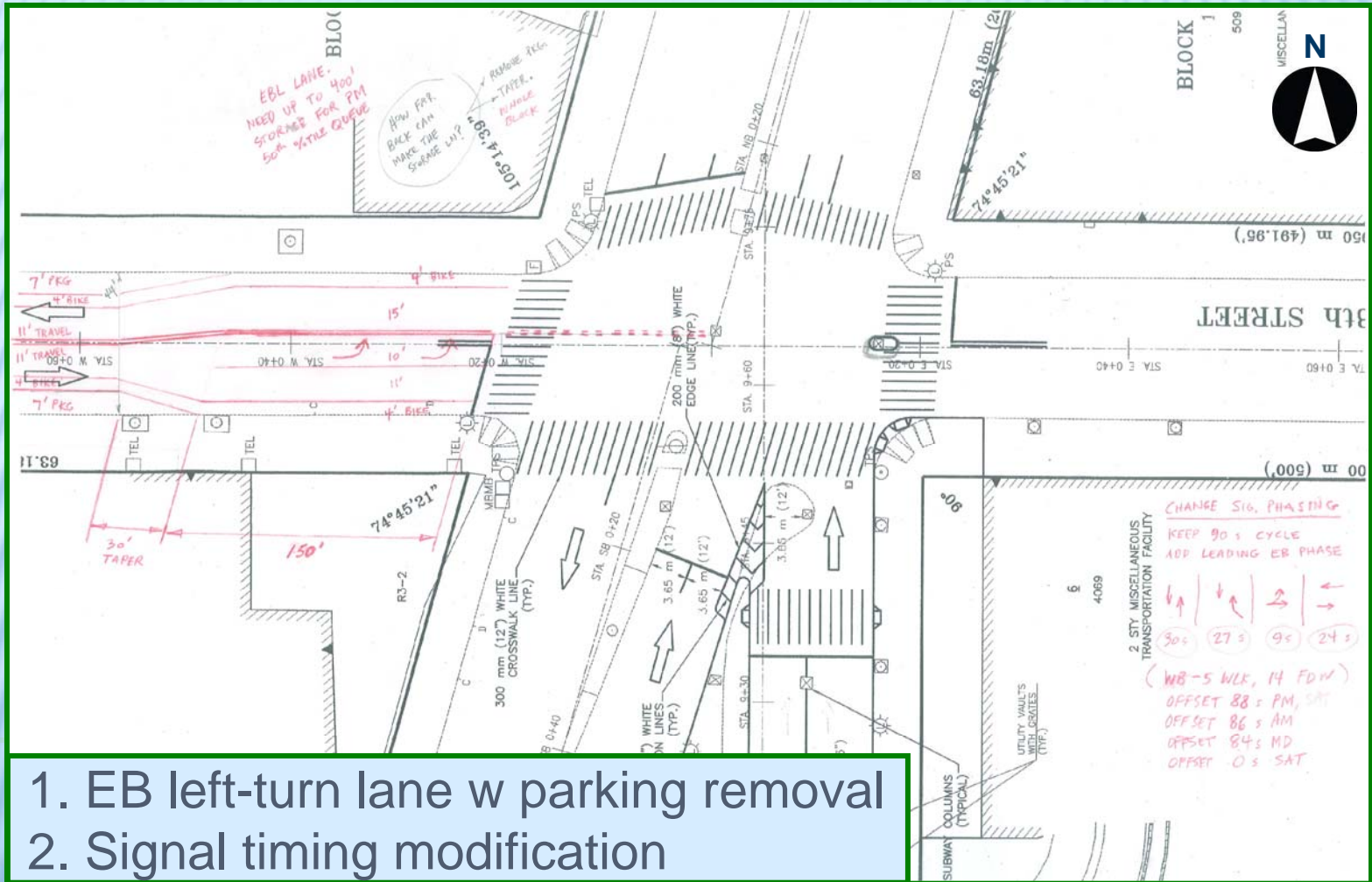
## - Broadway & Nagle Ave & Hillside Ave -



1. Curb extension on South side
2. High visibility crosswalk
3. Pavement marking

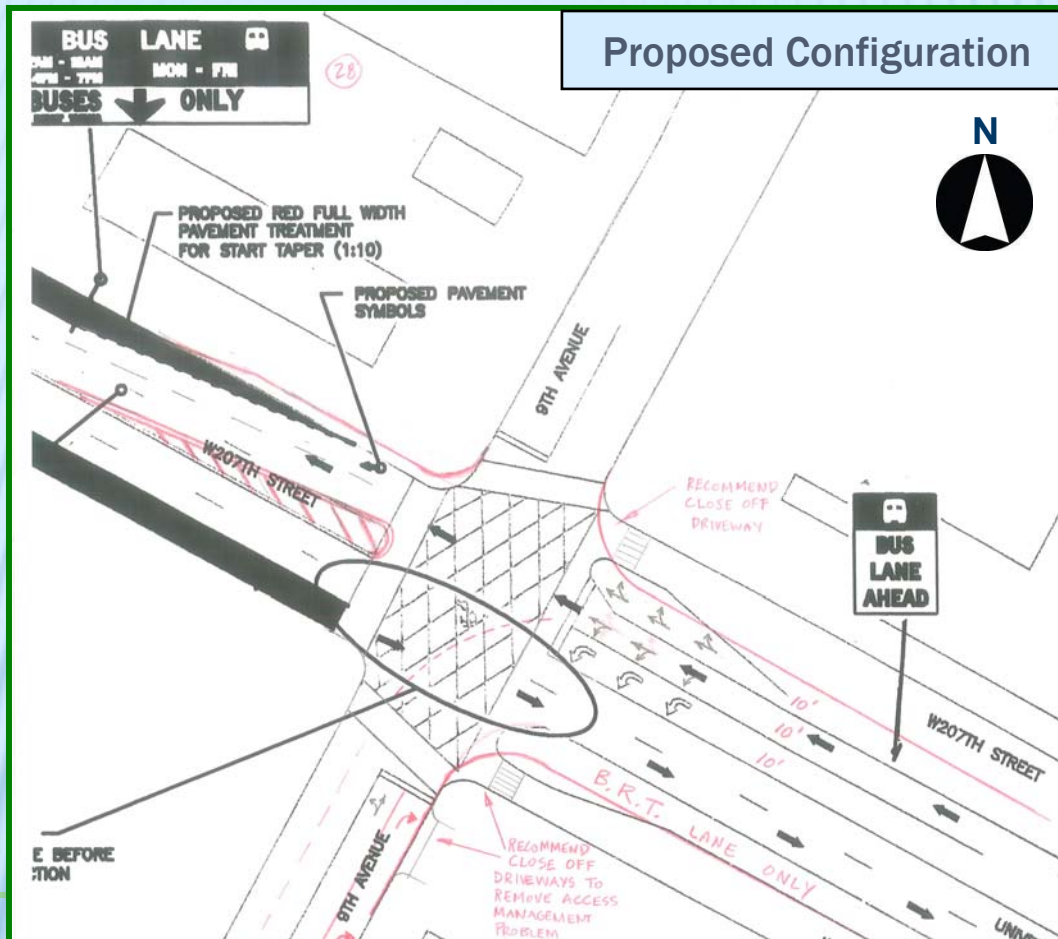


# Proposed Improvement - 218<sup>th</sup> St & Broadway & 10<sup>th</sup> Ave -





# Proposed Improvement - 207<sup>th</sup> St & 9<sup>th</sup> Ave -



1. Additional lanes for WB movements
2. Driveway closure
3. Pavement marking

# Next Steps

- Continuing Discussions with CB 12
- Updates of Proposed Improvements
- Request for Resolution of Support
- Implementation Schedule