

# Linden Blvd: Kings Hwy to Ave D

## Corridor Safety Improvements

2015



New York City Department of Transportation  
Presented by the Office of Research, Implementation and Safety  
Brooklyn Community Board 18 on June 17, 2015

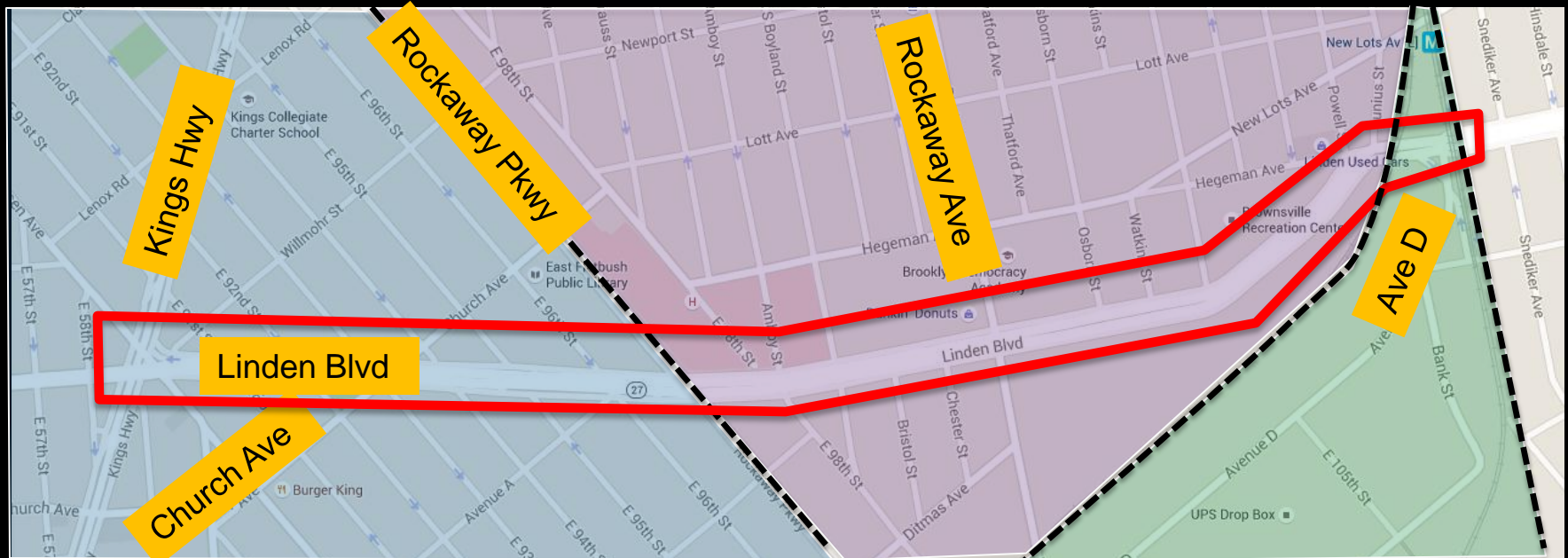
# Project Location

- Phase I of Linden Blvd (Kings Hwy to 78 St)
- Major east/west corridor in Eastern Brooklyn
- Residential, light industrial land use
- Heavy vehicle volumes at rush hours
- B8 Bus, Local truck route

CB 17

CB 16

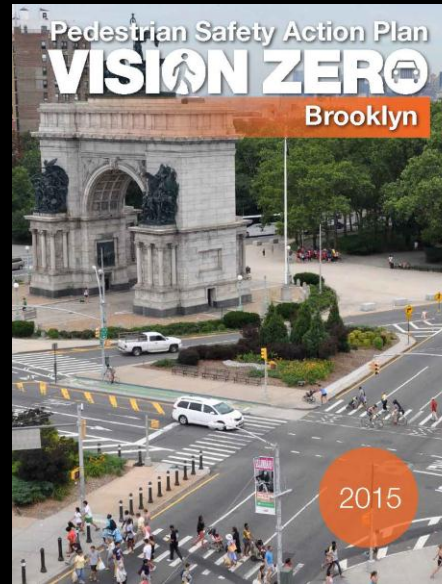
CB 18



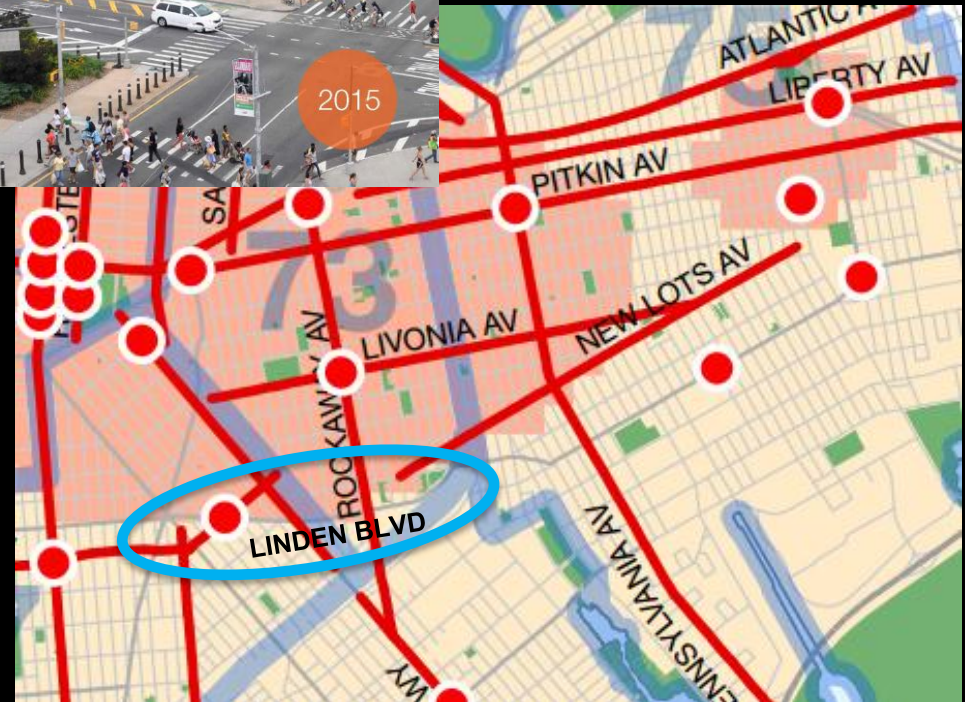
# Vision Zero

## Vision Zero

- Multi-agency effort to reduce traffic fatalities in NYC
- Borough Action Plans released in 2015
- Priority Intersections, Corridors, and Areas identified for each borough
  - **Church Ave & Linden Blvd** identified as a Priority Intersection for Brooklyn



Brooklyn Priority Map

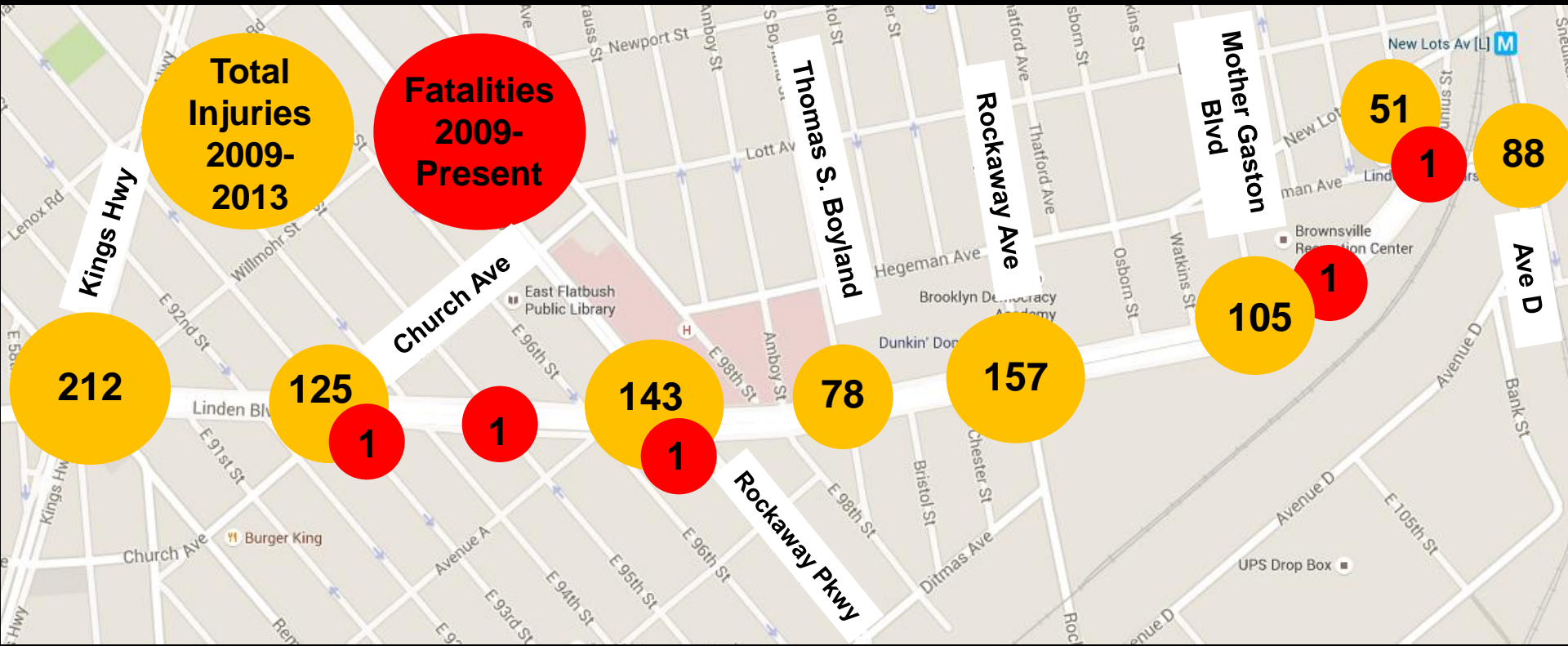


# Safety Data: Project Need

- 58 KSI (persons killed or severely injured)
- 1178 total injury crashes
- 5 Fatalities since 2009

Linden Blvd - Kings Hwy to Ave D, BK  
Injury Summary, 2009-2013 (5 Years)

	Total Injuries	Severe Injuries	Fatalities	KSI
Pedestrian	59	9	3	12
Bicyclist	19	2	0	2
Motor Vehicle Occupant	1100	43	1	44
<b>Total</b>	<b>1178</b>	<b>54</b>	<b>4</b>	<b>58</b>



# Outreach- Community Workshops

- Workshops held in February 2015 to get feedback from community on top issues with Linden Blvd



Linden Blvd Safety Workshop  
February 12<sup>th</sup>, 2015  
Brownsville Recreation Center



**LINDEN BOULEVARD  
(KINGS HIGHWAY TO 78TH STREET)  
SAFETY WORKSHOPS**

**SUBJECT:** Join the New York City Department of Transportation (DOT) to discuss traffic safety on Linden Boulevard between Kings Highway and 78th Street at two public workshops in Brownsville and East New York.  
(Light refreshments available)

DATE:	TIME:	LOCATION:
Thursday, February 5, 2015	6:30 - 8:30 p.m.	United Community Centers 613 New Lots Avenue, Brooklyn, NY 11207
Thursday, February 12, 2015	6:30 - 8:30 p.m.	Brownsville Recreation Center 1555 Linden Boulevard, Brooklyn, NY 11212

**Contact:** DOT Brooklyn Borough Commissioner's Office at (718) 222-7259

**Workshop Goals:**

- Identify street safety concerns
- Gather community input
- Discuss street design solutions
- Brainstorm ways to enhance safety on Linden Boulevard

Habrará un intérprete disponible en la reunión.



# Outreach- Interactive Website

- Interactive website allowed community members to submit their top issues to DOT

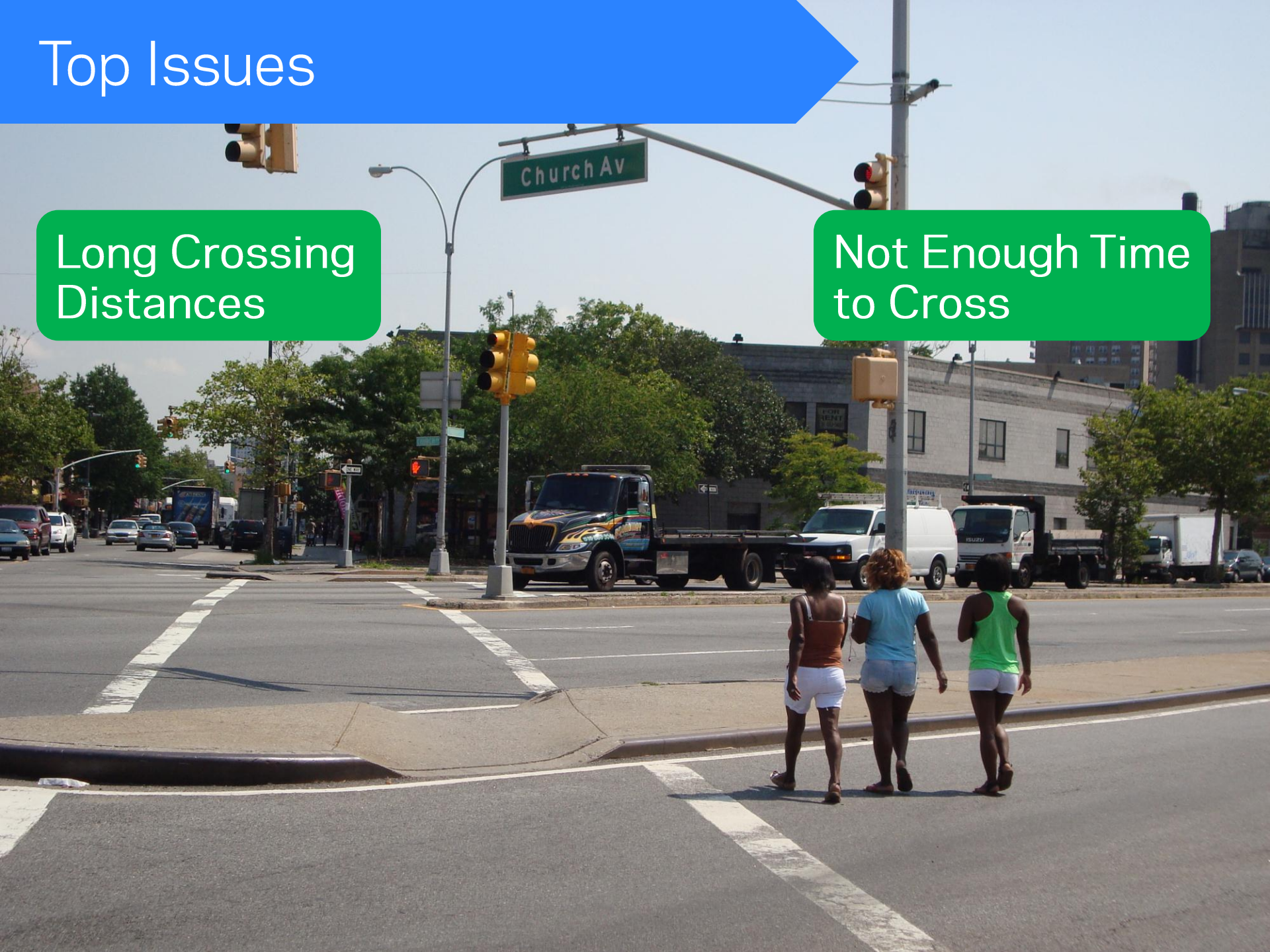
The screenshot displays a web interface for reporting traffic issues. On the left, a vertical sidebar contains icons for pedestrian, bicycle, bus, car, and a warning sign. The main area shows a map of Linden Boulevard with several colored markers: a blue starburst, a purple square, a red circle with a bicycle, a red circle with a car, and a yellow square with a black cross and a question mark. A yellow callout box says "Click the marker icon and place it on the map to add a comment." On the right, a list of user-submitted issues is shown, each with a star rating and an average score.

Issue	Rating	Average	Votes	Time
Speeding People speed around this curve. It is very dangerous.	3 stars	Average: 3	(1 vote)	02/05/2015 - 21:45
No Crosswalk Why is there no crosswalk here?	2 stars	Average: 2	(1 vote)	02/05/2015 - 21:41
Failure to Yield I have almost been hit in the west crosswalk by cars turning fast from Euclid Ave	3 stars	Average: 3	(1 vote)	02/05/2015 - 21:40
Dangerous Merge Cars almost hit each other here	3 stars	Average: 3	(1 vote)	02/05/2015 - 21:39
Long Distance to Cross I get stuck on the small concrete in the middle of the street here.	4 stars	Average: 4	(1 vote)	02/05/2015 - 21:37
Not Enough Time to Cross	1 star	Average: 1	(1 vote)	02/05/2015 - 21:35

# Top Issues

Long Crossing Distances

Not Enough Time to Cross



# Top Issues

Not Enough Space to Wait





# Top Issues



Lack of left turn  
arrows at select  
intersections

# Top Issues

Long Distance  
Between Crosswalks



# Top Issues



Speeding

Failure to Yield

# Proposal Details: Speed Limit and Signal Timing

- Reduce speed limit to 30 MPH
- Add protected left turn phases
  - Amboy / E 98<sup>th</sup> St
  - Thomas Boyland St
  - Ave D / Van Sinderen Ave
- Give pedestrians more time to cross locations where current time is inadequate



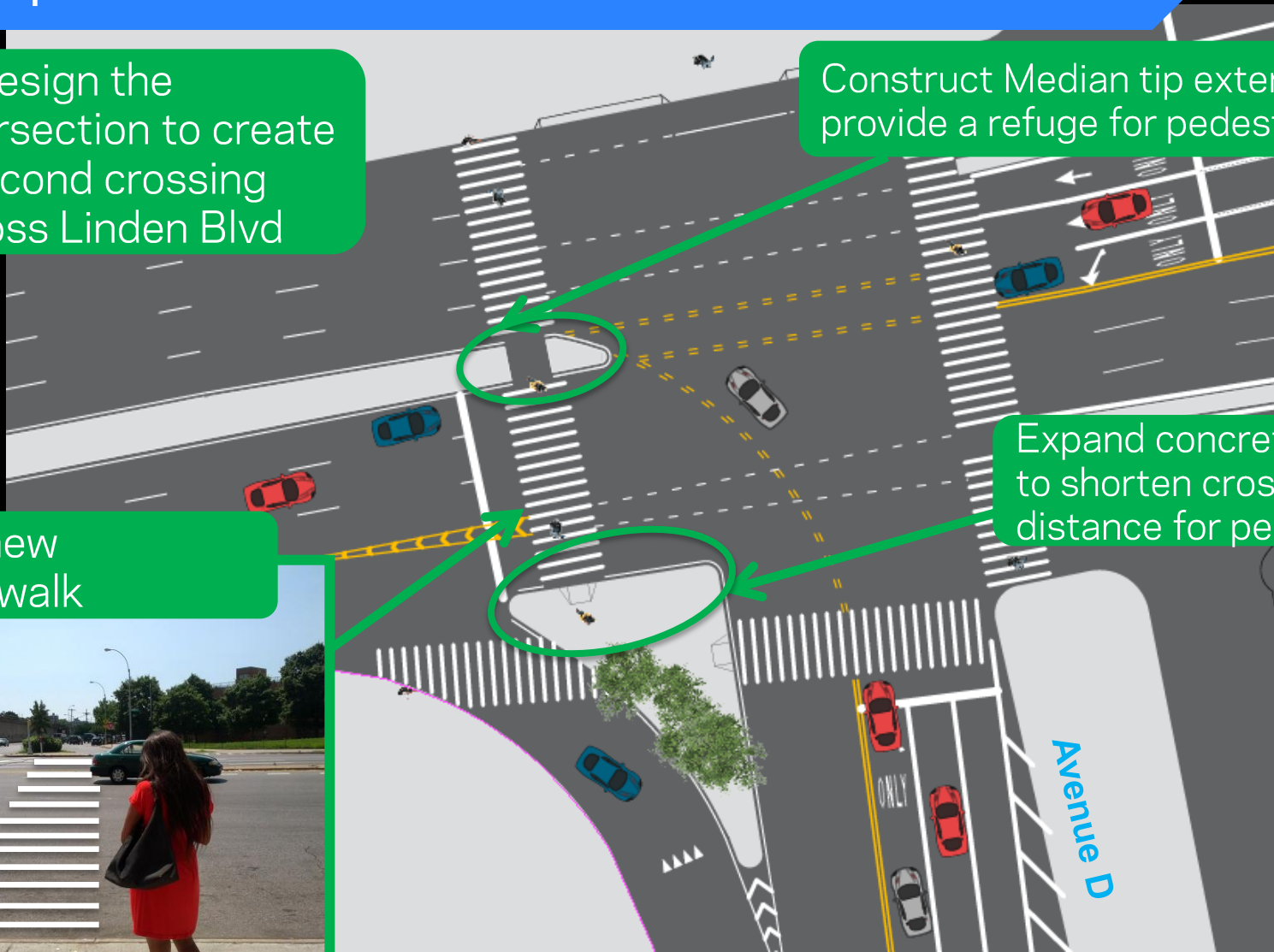
# Proposal Details: Ave D

Redesign the intersection to create a second crossing across Linden Blvd

Construct Median tip extension and provide a refuge for pedestrians

Add new crosswalk

Expand concrete triangle to shorten crossing distance for pedestrians



# Project Benefits

- Median extensions allow for shorter, safer pedestrian crossings
- Protected turn phases allow for simpler, safer left turns
- Markings upgrades discourage speeding and better define roadway space
- New crosswalk accommodates pedestrian desires lines



Existing: Linden Blvd at Thomas Boyland St



Proposed: Queens Blvd at 69<sup>th</sup> St

Questions?

**Thank  
You**

Contact: DOT Brooklyn Borough Office at (646) 892-1350