

# Sheepshead Bay Road

## Corridor Safety Improvements

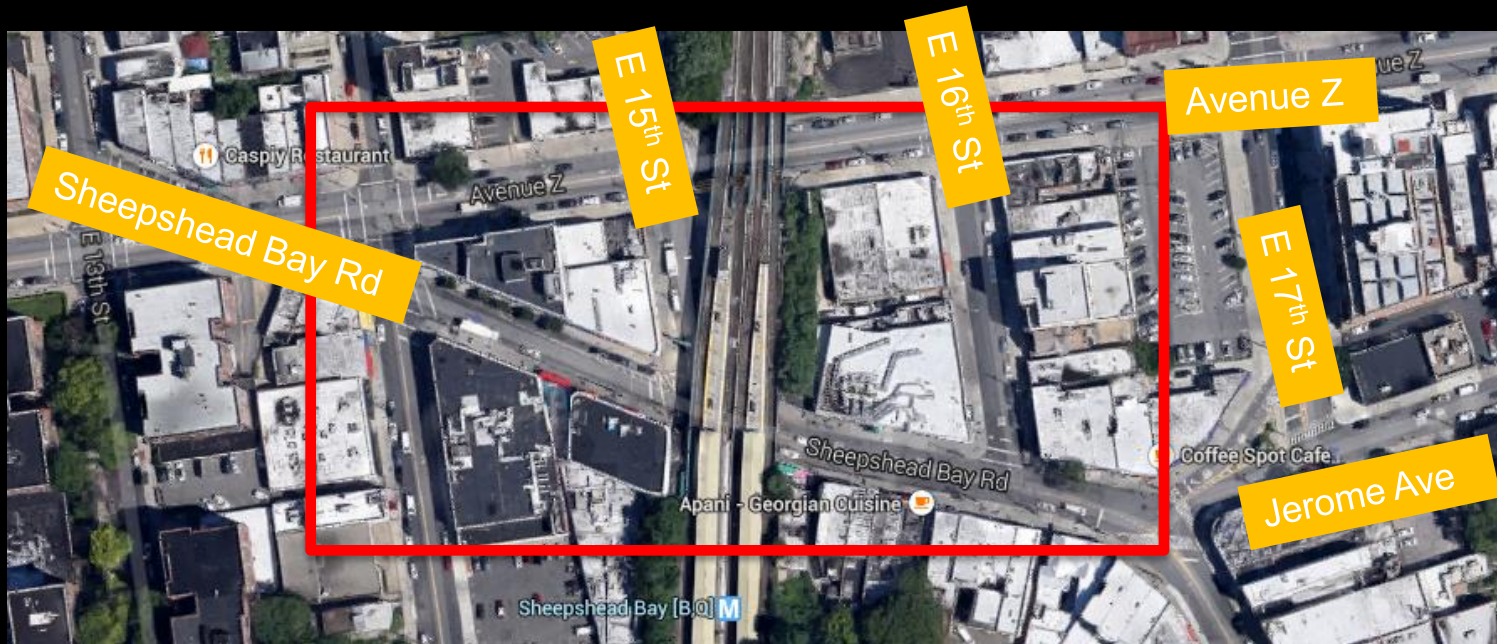
2015



New York City Department of Transportation  
Presented by the Office of Research, Implementation and Safety  
Brooklyn Community Board 15 on Tuesday, June 16<sup>th</sup>

# Project Location

- Busy commercial area
- Sheepshead Bay Rd (B, Q) express subway stop
- Multiple bus lines (B4, B36, B49)
  - Over 5,000 average subway to bus transfers
  - One of the largest intermodal transfer points in Brooklyn
- Within Kingsbridge Senior Area

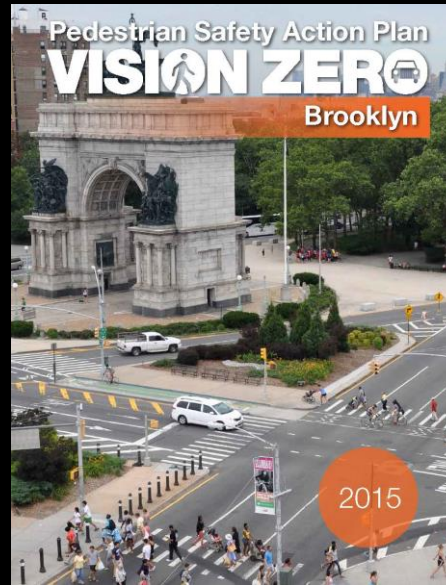




# Vision Zero Priority Corridors

## Vision Zero

- Multi-agency effort to reduce traffic fatalities in NYC
- Borough Action Plans released in 2015
- Priority Intersections, Corridors, and Areas identified for each borough
  - Avenue Z & E 15<sup>th</sup> St identified as a Priority Corridors for Brooklyn

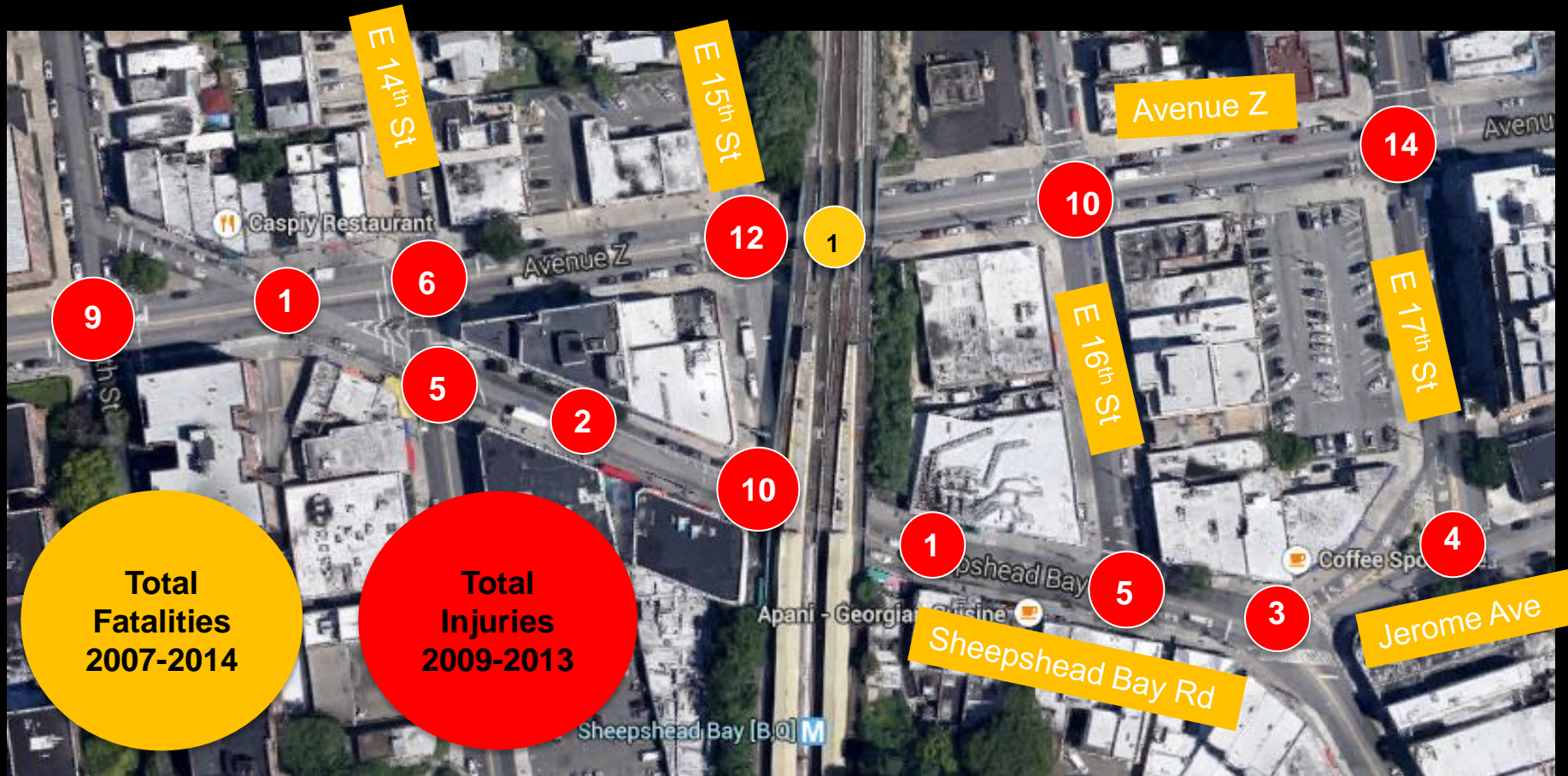


# Safety Data: Project Need

- 2009-13:
  - 7 KSI (persons killed or severely injured)
  - 74 total injuries
- 1 Pedestrian Fatality on Avenue Z in 2008

Injury Summary, 2009-2013 (5 Years)

	Total Injuries	Severe Injuries	Fatalities	KSI
Pedestrian	29	5	0	5
Bicyclist	6	2	0	2
Motor Vehicle Occupant	39	0	0	0
Total	74	7	0	7





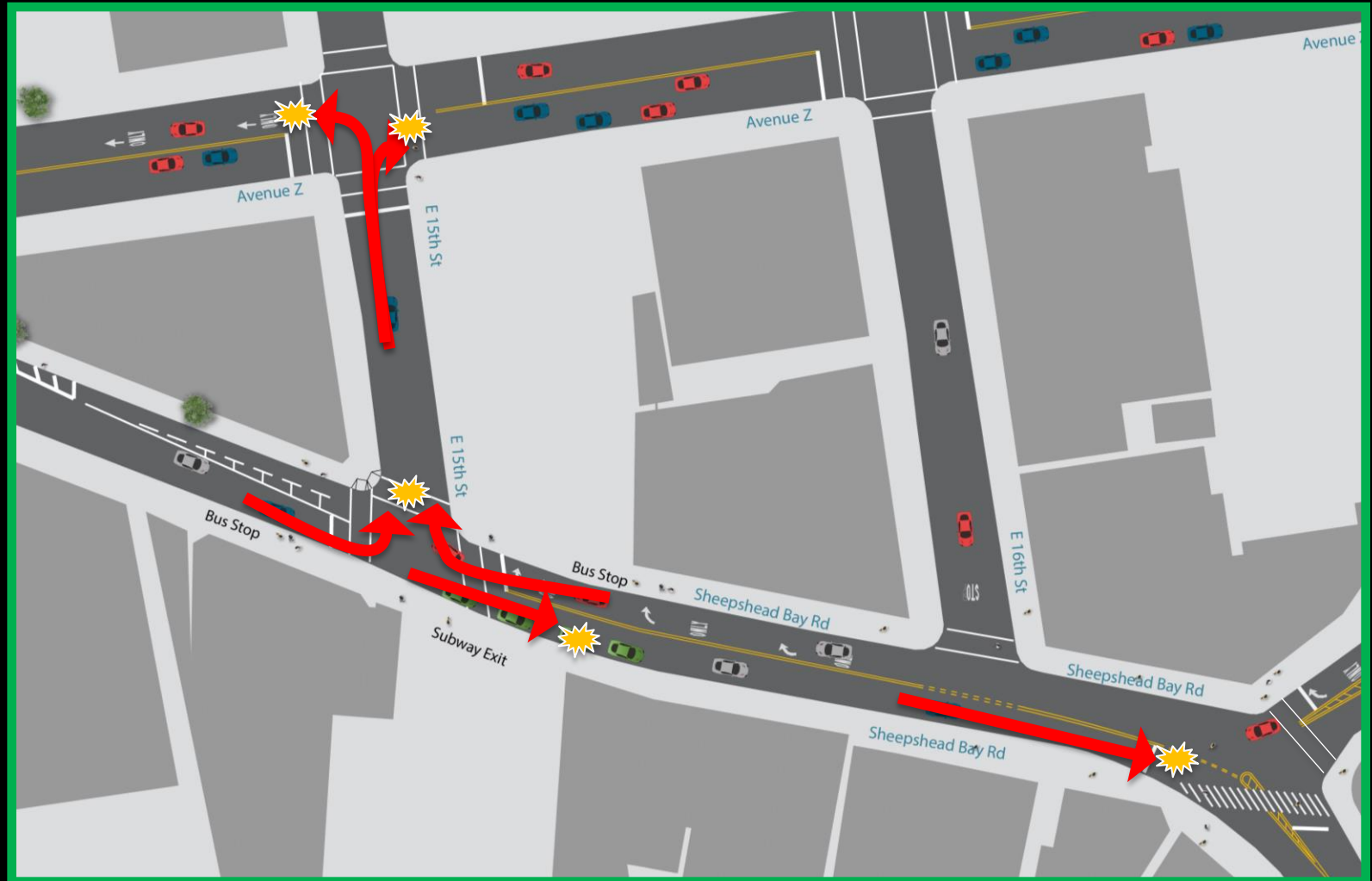
# Existing Conditions- Sheepshead Bay Rd

- Narrow roadway with two-way traffic and numerous buses
- Heavy pedestrian volumes, commercial activity
- Taxis parking in crosswalk create visibility problems for pedestrians exiting the subway station
- Poor traffic circulation; head on condition at E 15<sup>th</sup> St
- Truck Loading / Unloading



# Safety Data: Project Need

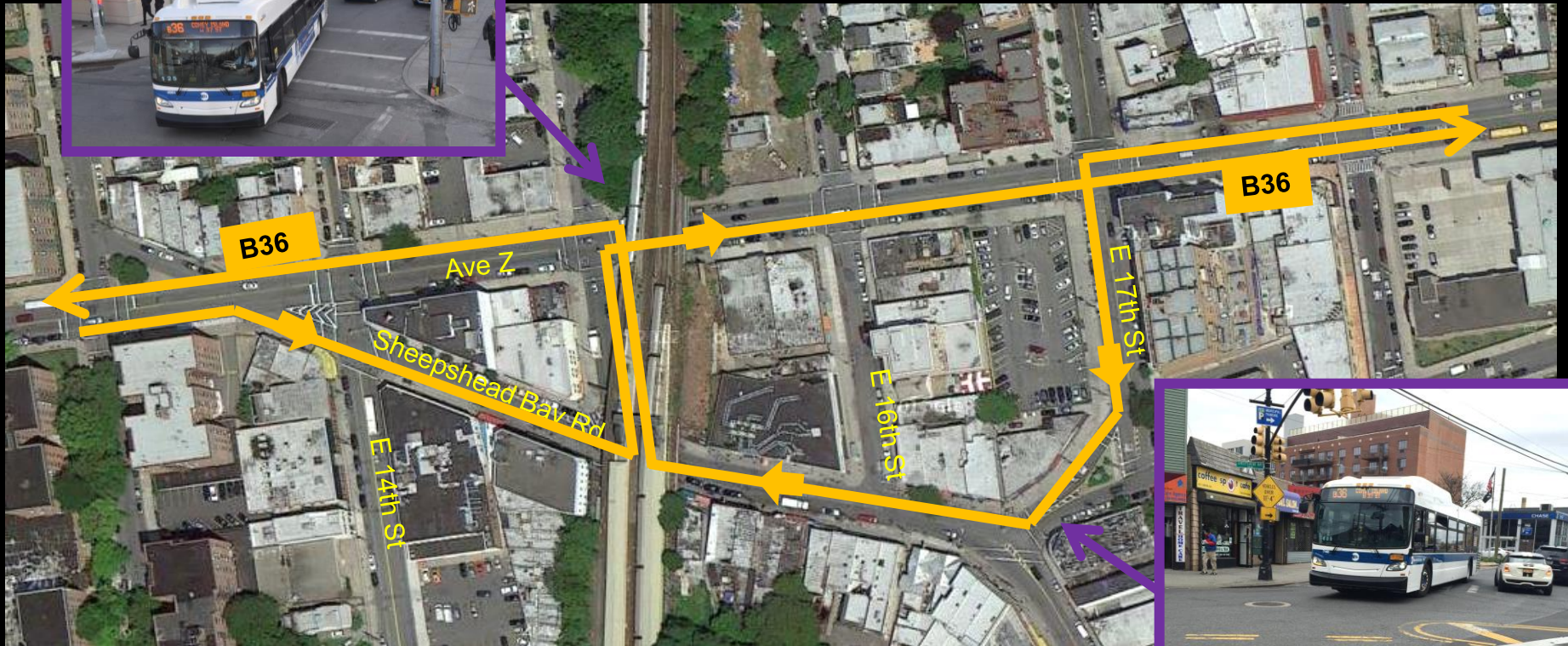
- NYPD Crash Data shows conflict points for pedestrians and vehicles





# Current Bus Routing Issues

- B36 Bus makes multiple turns through busy intersections



# Circulation Issues

Narrow roadway  
& conflicting turns

Pedestrian desire line

Head on  
condition

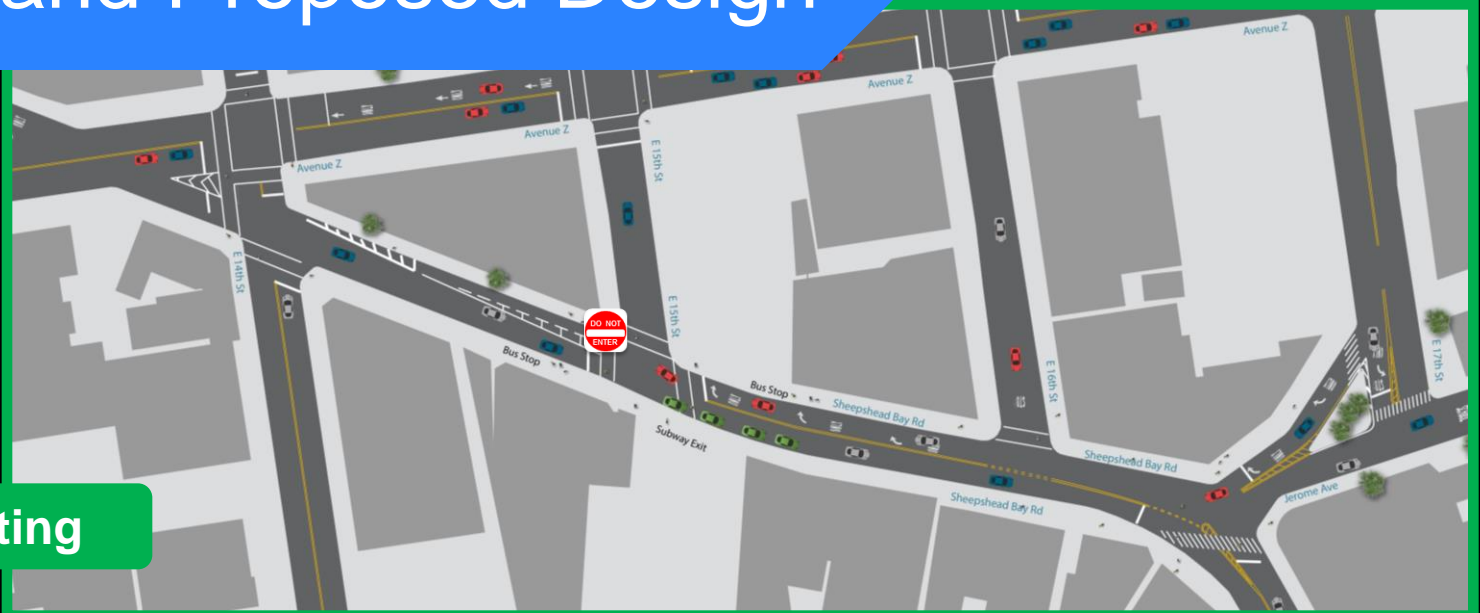
Taxis blocking crosswalk  
and travel lane



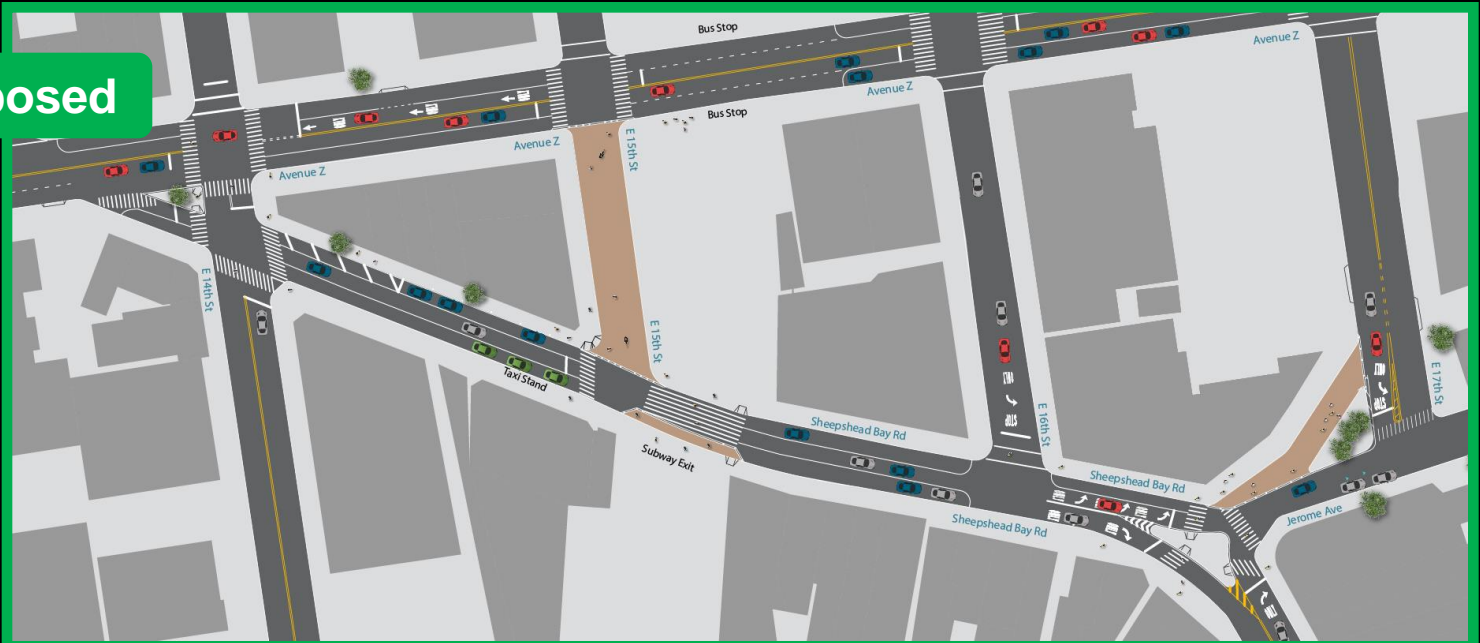


# Existing and Proposed Design

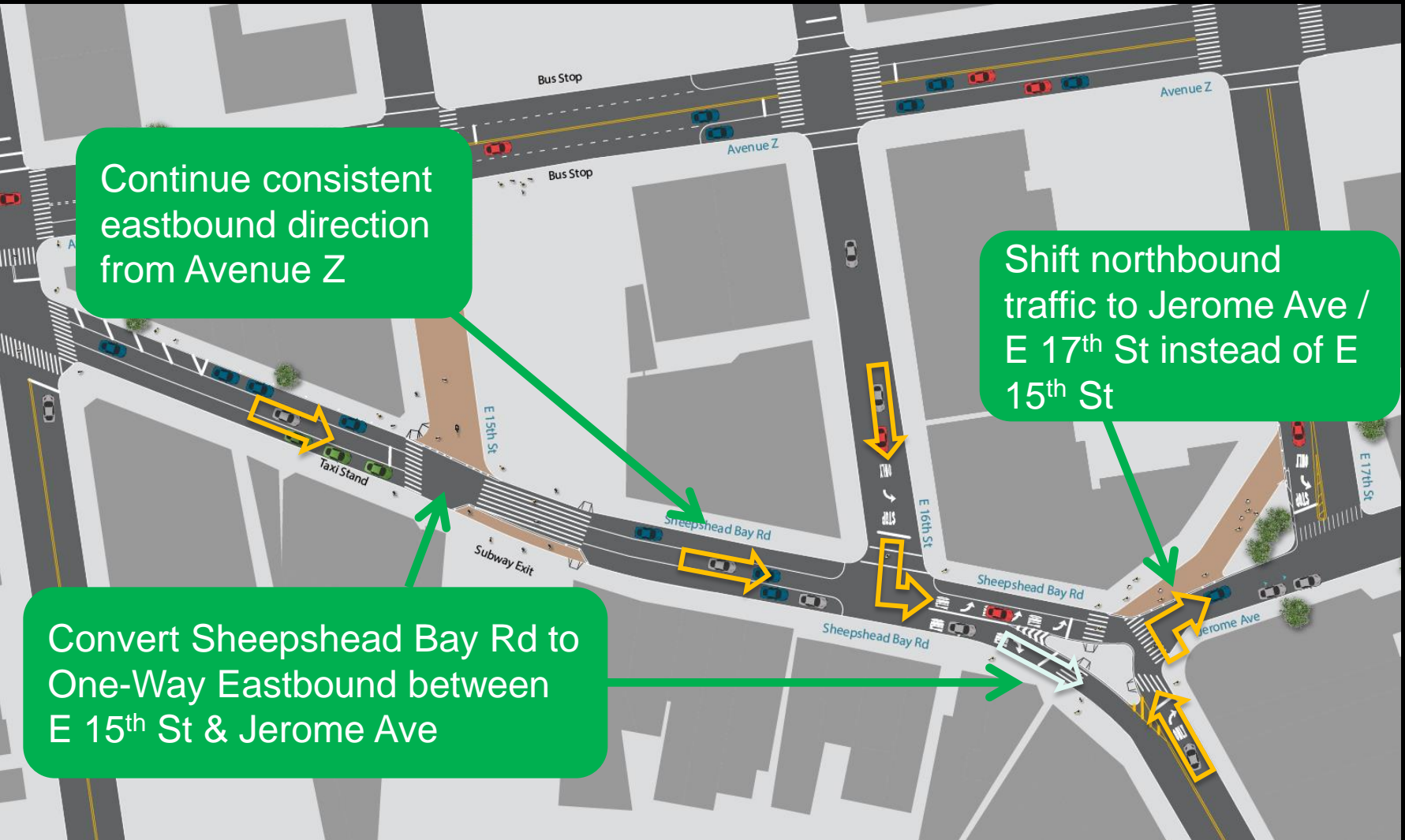
Existing



Proposed



# Proposal: One-Way Conversion



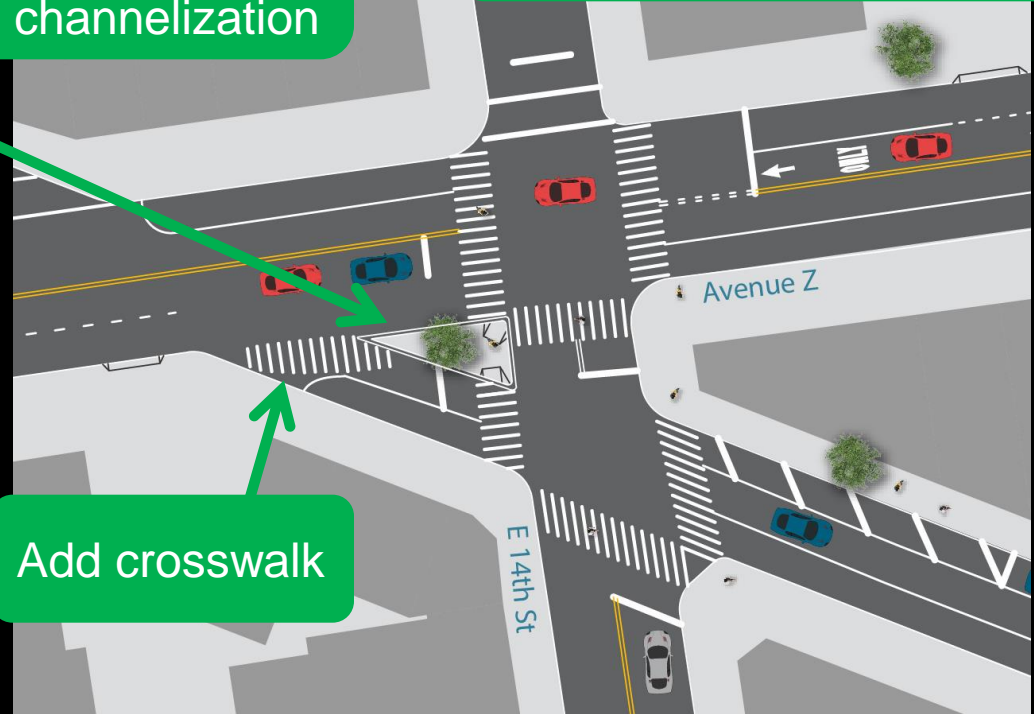


# Proposal Details



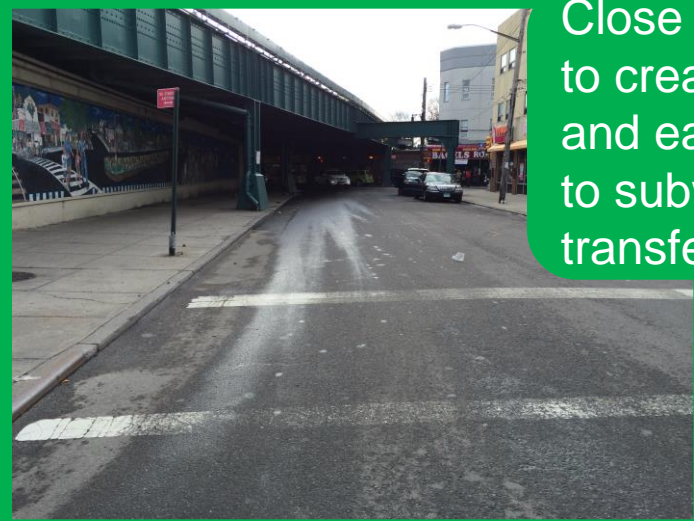
Construct new pedestrian safety island in existing channelization

Install parking lane stripe on Avenue Z

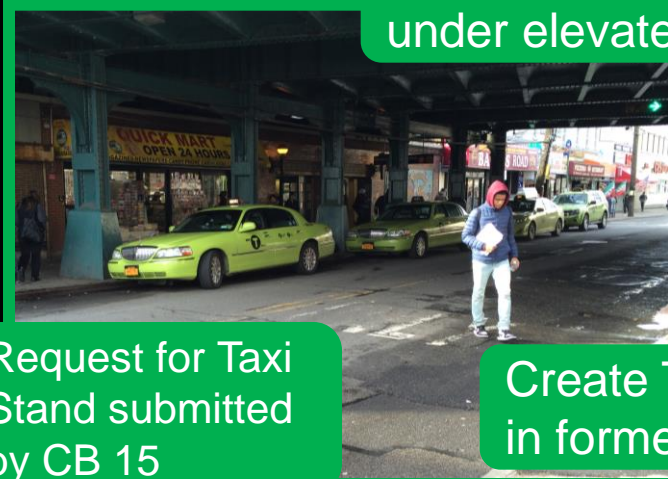


Add crosswalk

# Proposal Details



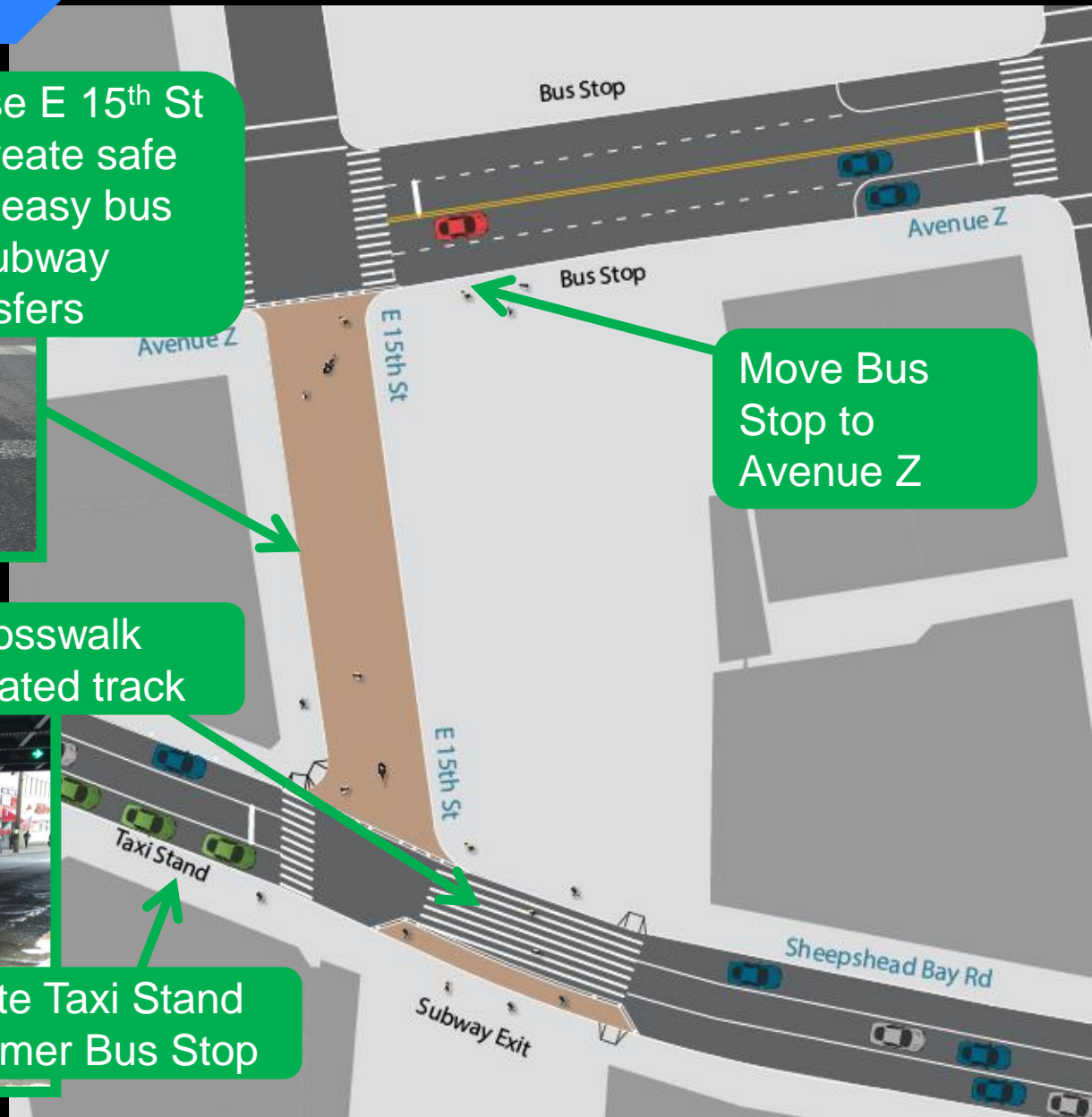
Close E 15<sup>th</sup> St  
to create safe  
and easy bus  
to subway  
transfers



Request for Taxi  
Stand submitted  
by CB 15

Expand crosswalk  
under elevated track

Create Taxi Stand  
in former Bus Stop

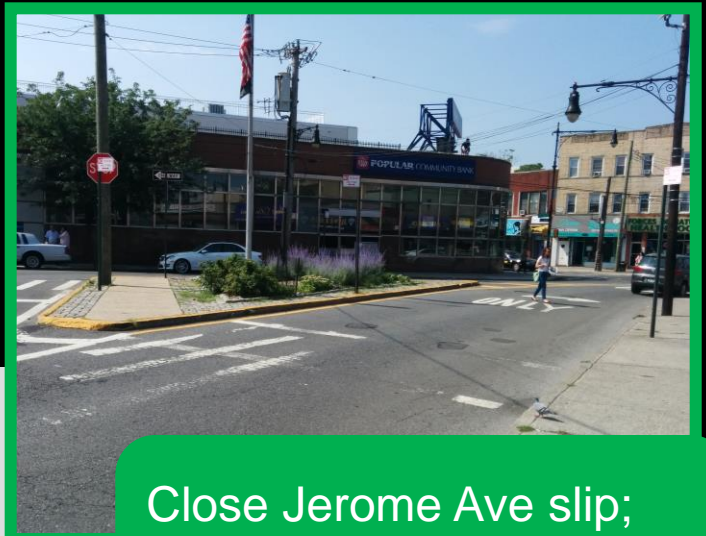




# Proposal Details



Construct new pedestrian safety island



Close Jerome Ave slip;  
potential public space  
(maintenance partner required)



Convert Sheepshead Bay Rd  
to one-way eastbound

Maintain 2-way traffic  
south of Jerome Ave

# Proposed Bus Routing: B36

Proposed

B36 Bus Stops

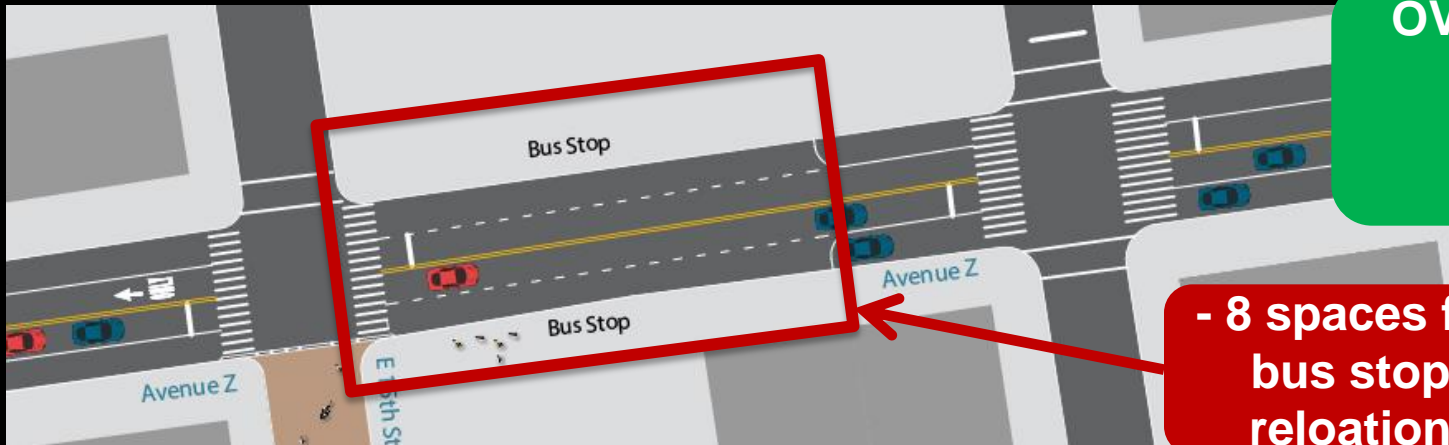


Existing

Eliminating turning movements and avoiding congested areas is expected to improve on-time service and make travel times more consistent

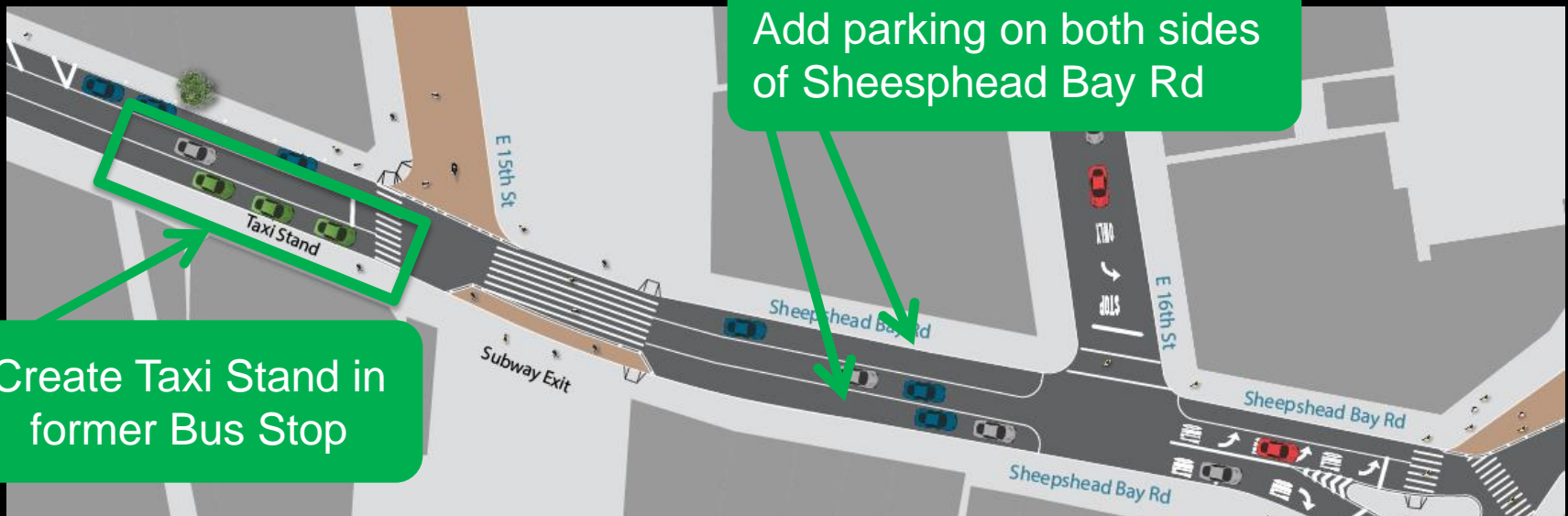


# Proposal Details: Overall Parking Gain



**OVERALL: Add 15  
spaces  
Net Gain of 7  
Spaces**

**- 8 spaces for  
bus stop  
relocation**



**Add parking on both sides  
of Sheepshead Bay Rd**

**Create Taxi Stand in  
former Bus Stop**

# Public Space Options

Numerous options for activating new public space:

## Near Term Options

- Public Art
- Art Display cases
- Automatic Public Toilet

## Future Options

(Maintenance Partner Required)

- Public Plaza
- Concessions
- Farmers Markets





# Project Benefits

- Provides shorter, safer pedestrian crossings
- Simplifies dangerous intersections for pedestrians and motor vehicles
- Allows B36 bus to move more safely and efficiently
- Improves traffic circulation in busy commercial area, creates new parking
- Creates over 8,000 sq ft of new public space, with opportunities for public art and programming



Existing: Sheepshead Bay Rd at E 14<sup>th</sup> St / Ave Z



Proposed: Bushwick Ave and Stanwix Ave



Questions?



Thank  
You

Contact: DOT Brooklyn Borough Office at (646) 892-1350