

Southern Blvd & Boston Rd at E 174th St

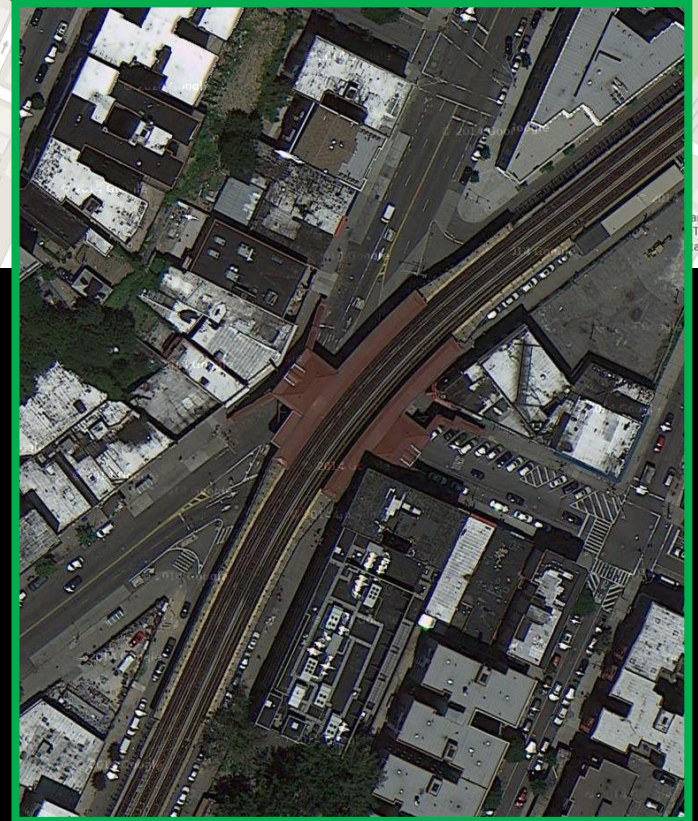
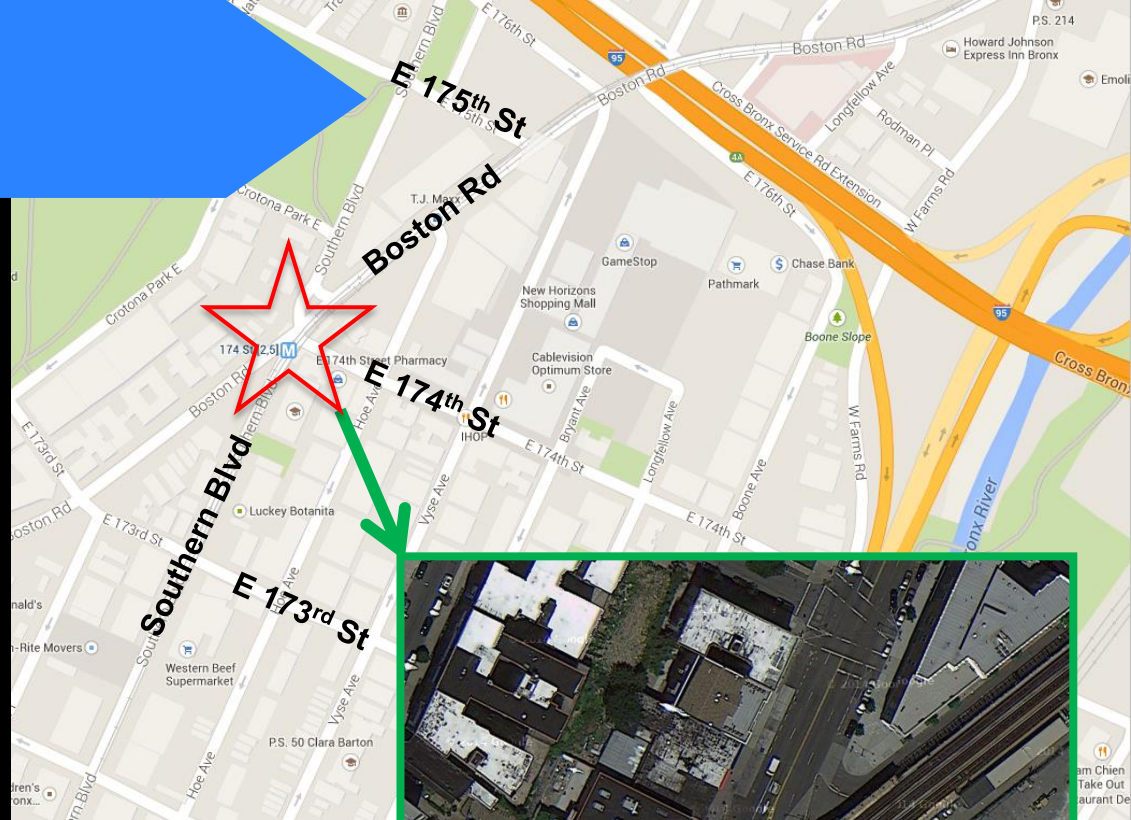
Intersection Safety Improvements

2015



Project Location

- Bow-tie intersection
- 2/5 subway stop
- Bx19 and Bx21 bus routes
- Local truck routes (Boston Rd & Southern Blvd)
- East Bronx Academy for the Future located at the intersection
- Community requests for improvements



Safety Data: Project Need



Southern Blvd At Boston Rd, BX

Injury Summary, 2009-2013 (5 Years)

	Total Injuries	Severe Injuries	Fatalities	KSI
Pedestrian	17	3	0	3
Bicyclist	3	0	0	0
Motor Vehicle Occupant	19	1	0	1
Total	39	4	0	4

- 2009-2013: 4 KSI (persons killed or severely injured)
- **Vision Zero priority:**
 - Priority Intersection
 - Priority Corridor (Southern Blvd)
 - Within Priority Area
- Top 2012 **High Pedestrian Crash Location** in the Bronx
- **Top 1%** of Bronx intersections for pedestrian KSI



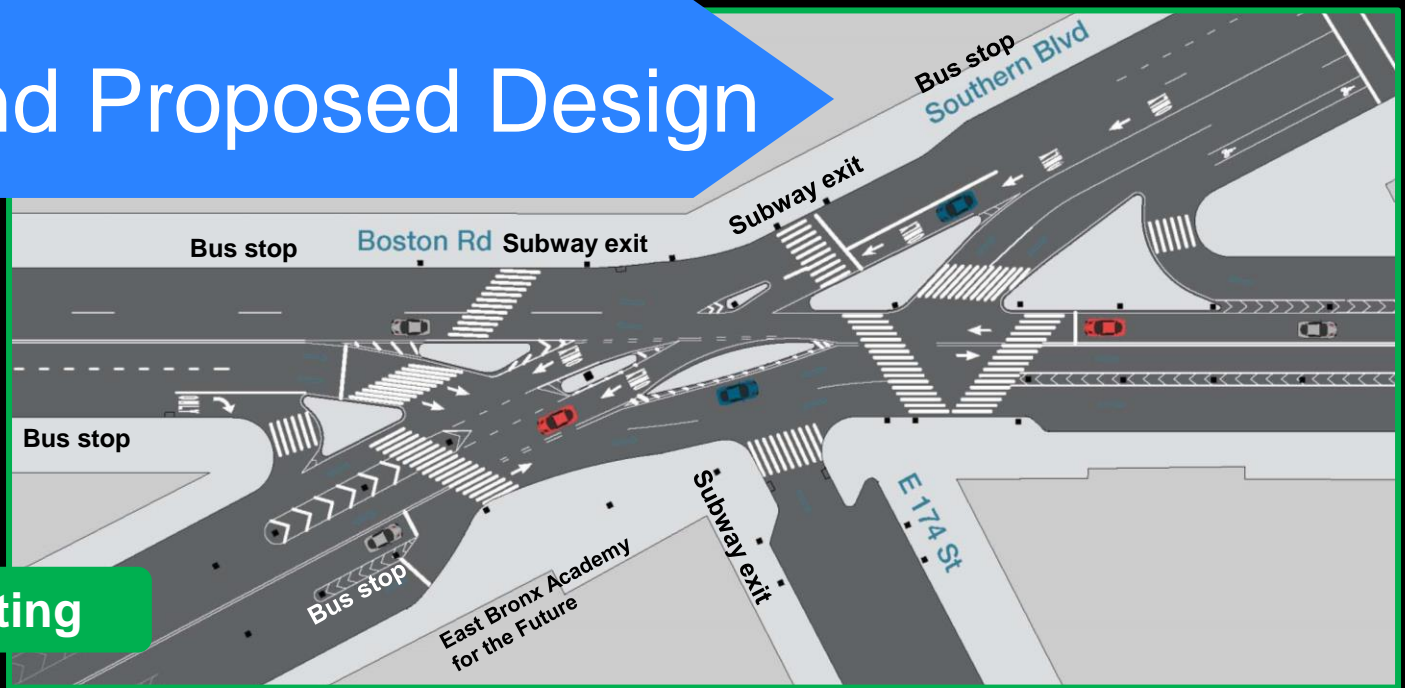
Existing Conditions

- Complex traffic pattern
- Pedestrian-only crossing time
- Pedestrians cross against the signal and outside of crosswalks to follow shortest route across intersection
- Bus stop in front of school requires pedestrians to wait in the street between traffic
- Poor visibility with elevated subway overhead

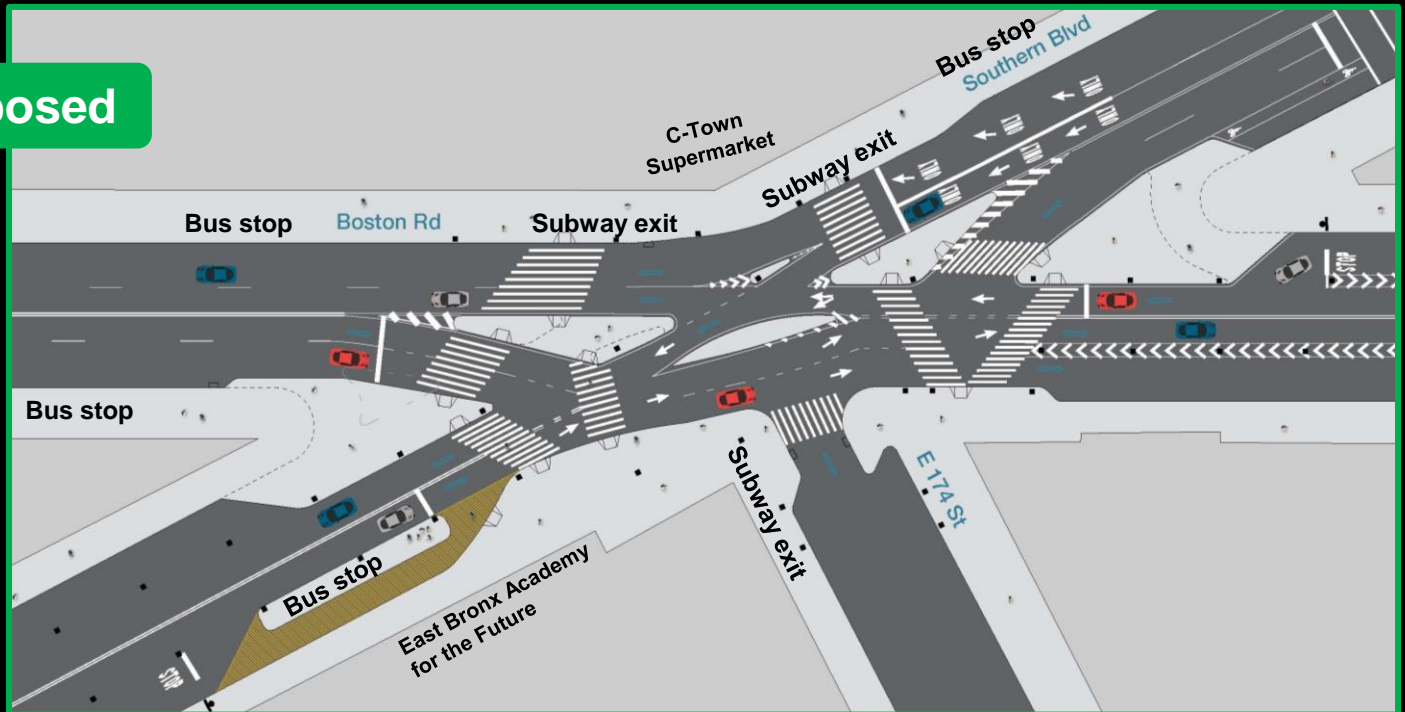


Existing and Proposed Design

Existing



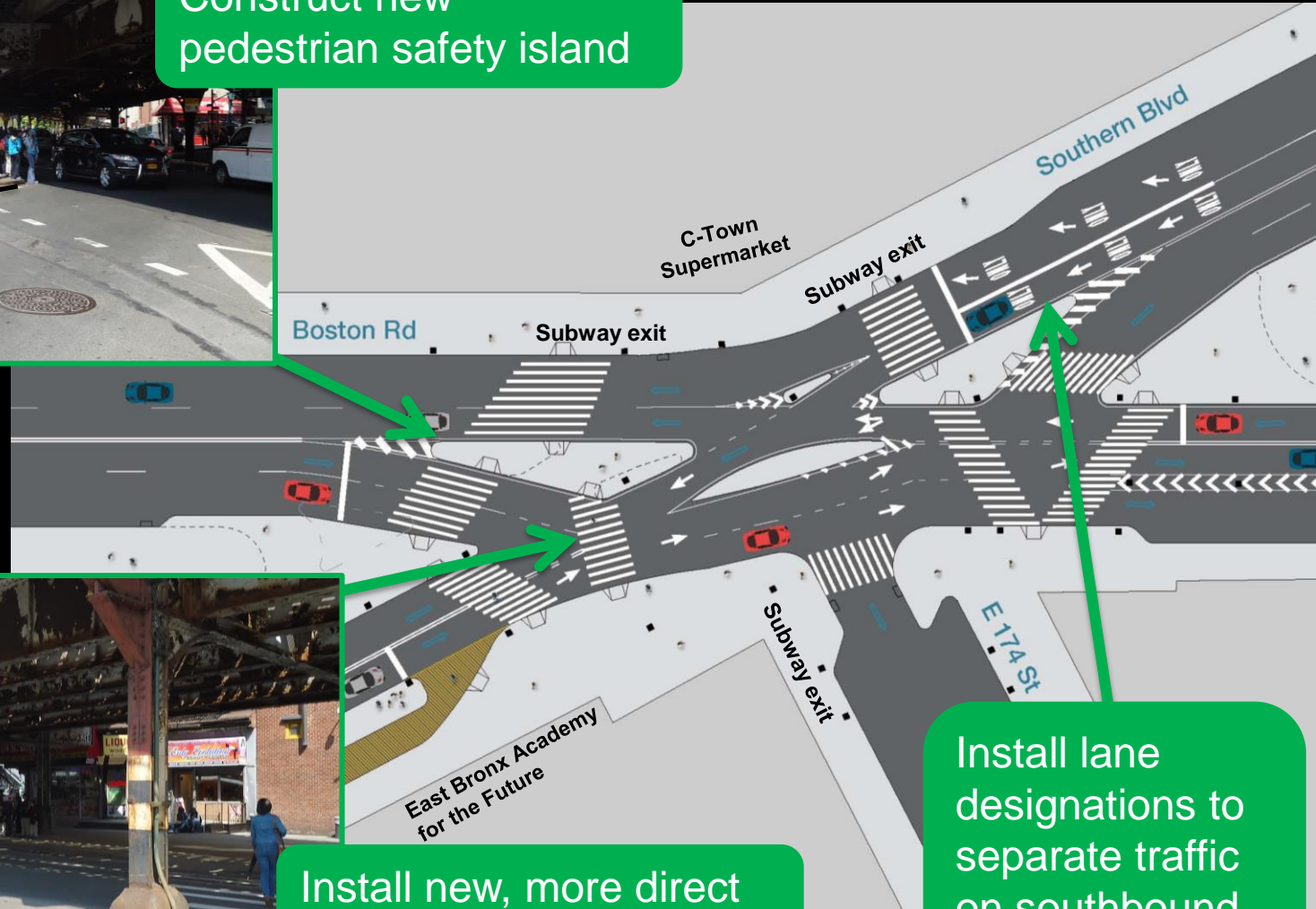
Proposed



Proposal: Island and New Crossing



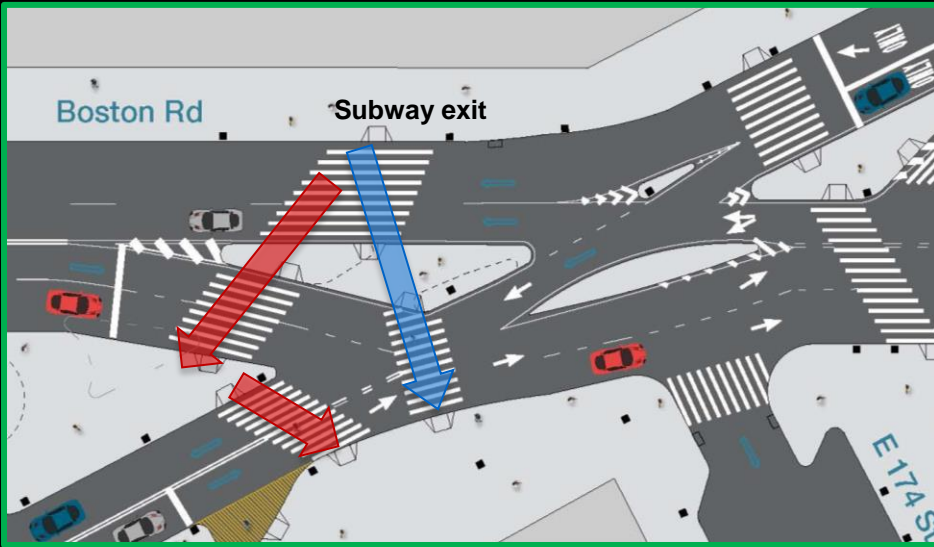
Construct new pedestrian safety island



Install new, more direct pedestrian crossing

Install lane designations to separate traffic on southbound Southern Blvd

Proposal: Island and New Crossing



Island allows for new crosswalk and provides safe refuge for pedestrians when crossing

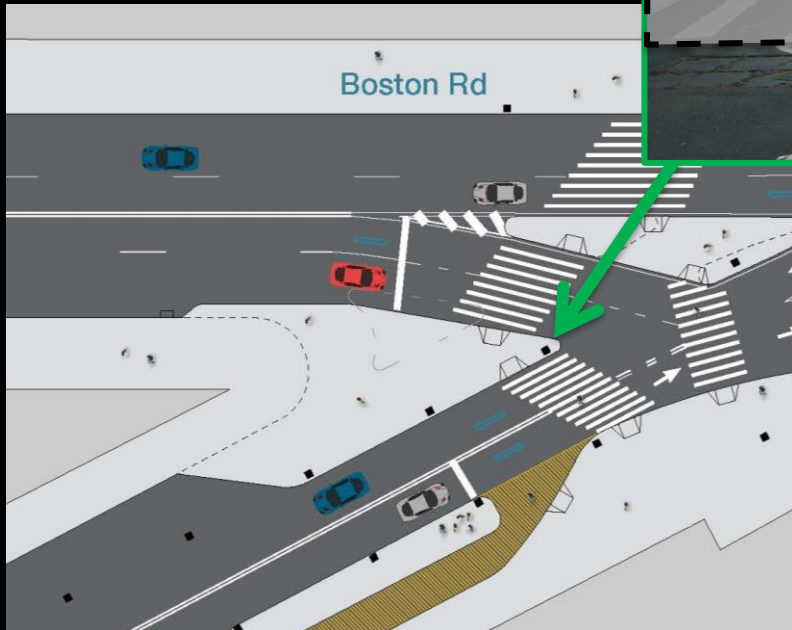


New crosswalks creates more direct path from subway exit across intersection towards E 174th St and school

Proposal: Close Slip Lanes

Close right turn slip lane from northbound Boston Rd to southbound Southern Blvd

Peak hour volume:
18 vehicles

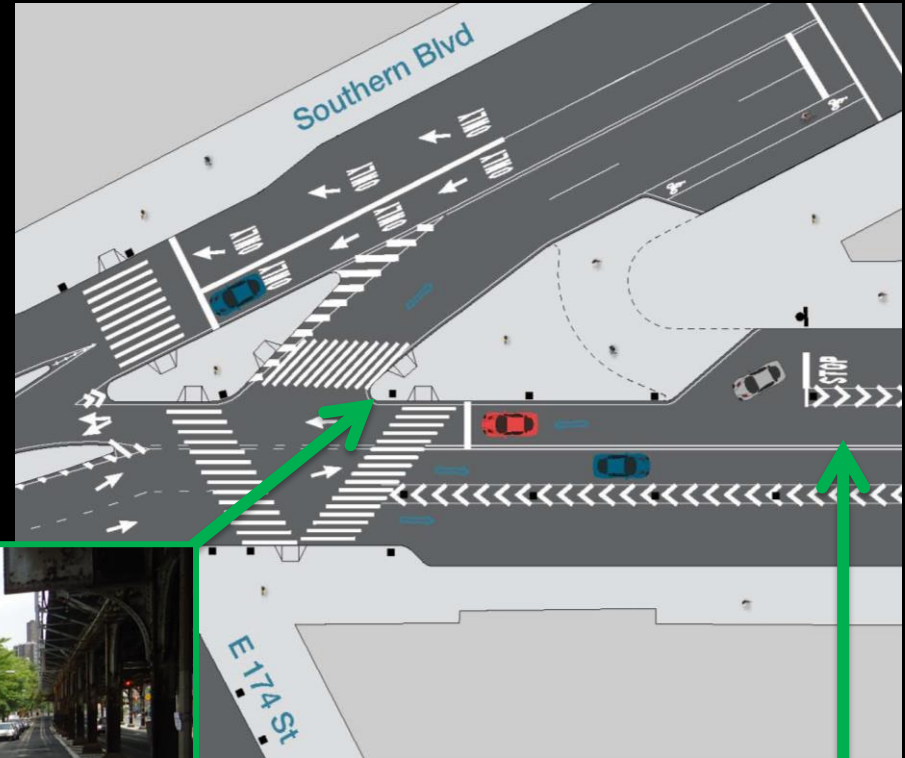


Simplifies intersection operations and shortens pedestrian crossing distance

Proposal: Close Slip Lanes

Close right turn slip lane from southbound Boston Rd to northbound Southern Blvd

Peak hour volume:
57 vehicles



Move stop sign for merge onto inner lane of Boston Rd



Proposal: Alternate Routes

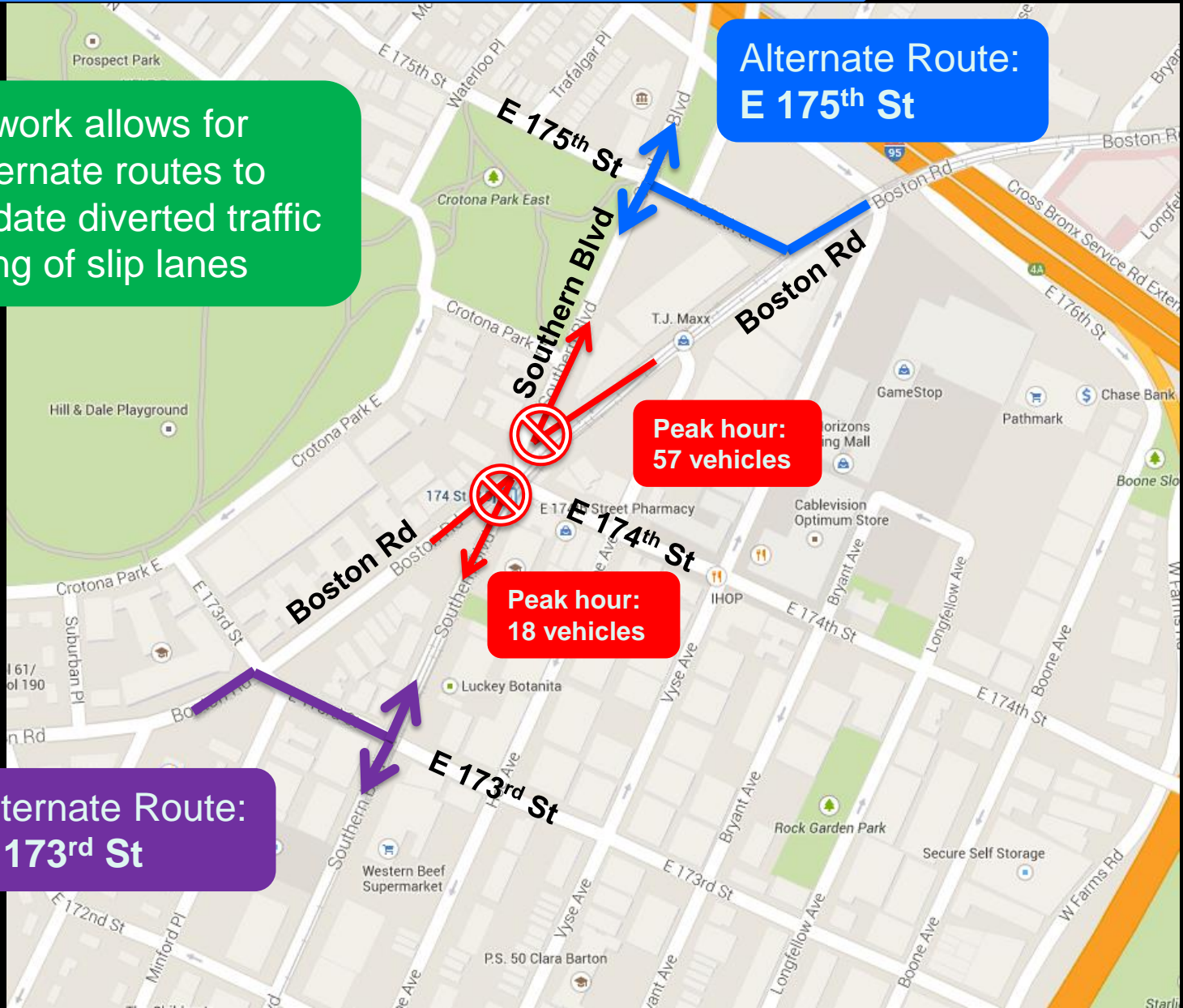
Street network allows for nearby alternate routes to accommodate diverted traffic from closing of slip lanes

Alternate Route:
E 175th St

Peak hour:
57 vehicles

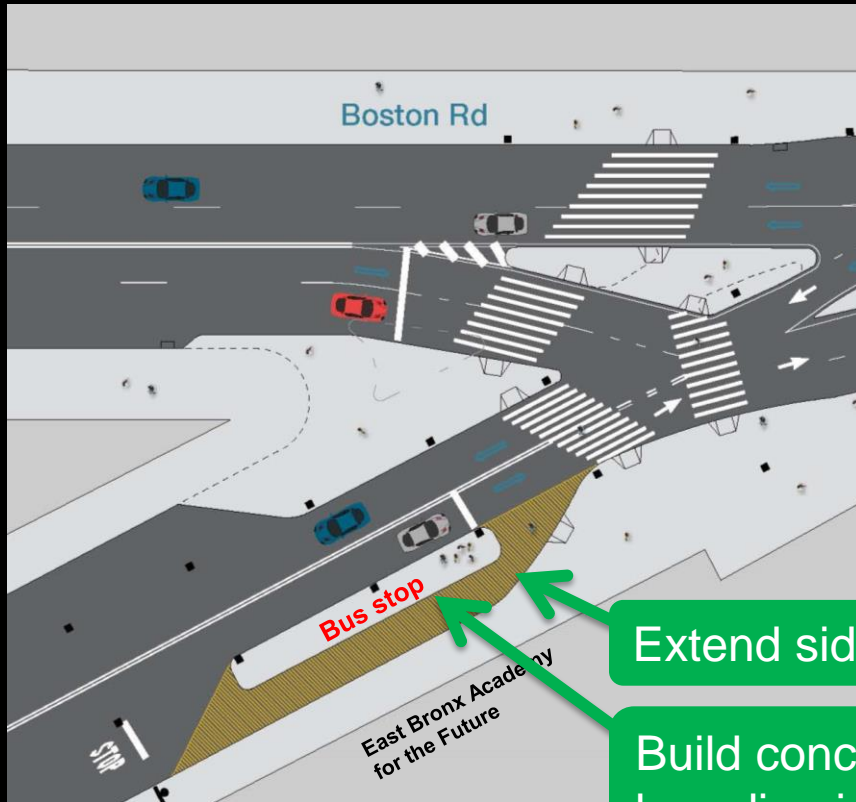
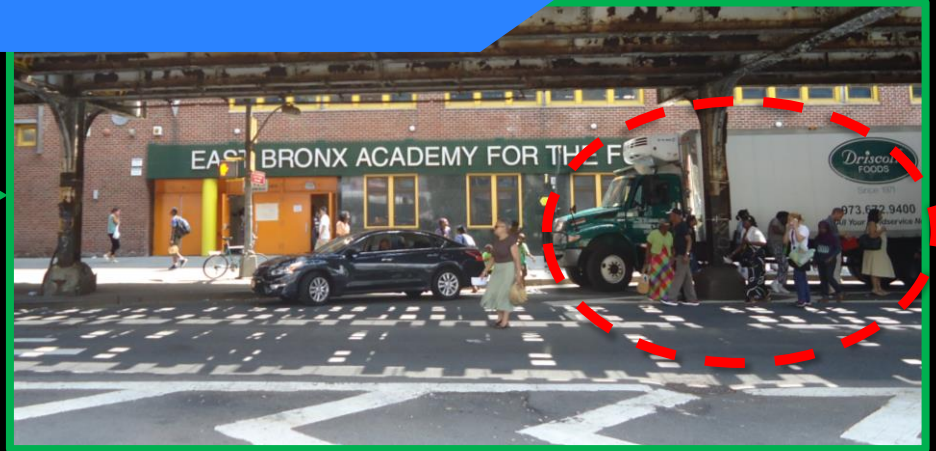
Peak hour:
18 vehicles

Alternate Route:
E 173rd St



Proposal: Bus Stop Improvements

Existing Bx19 bus stop underneath elevated subway tracks requires that riders wait in between traffic in the street



Extend sidewalk with paint

Build concrete bus boarding island



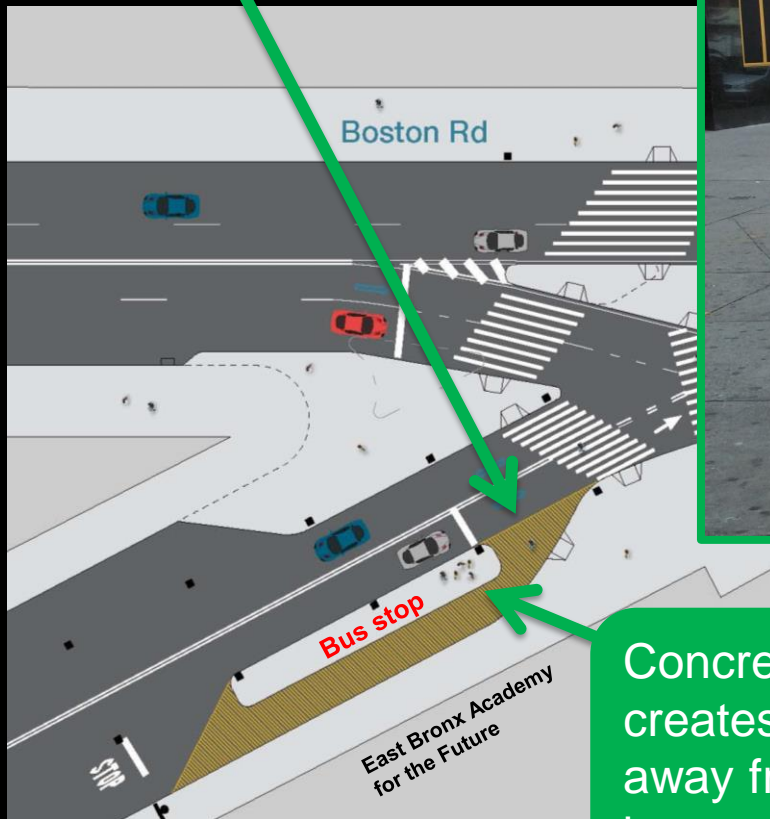
Moving lane

Bx19 is the 10th busiest route in the city with over 10 million riders annually*

*MTA: Annual Bus Ridership by Route

Proposal: Bus Stop Improvements

Painted sidewalk extension provides additional pedestrian space at heavily used bus stop and in front of school



Concrete bus boarding island creates safe waiting space away from traffic and makes bus stop ADA compliant

Painted space requires maintenance partner



To maximize pedestrian safety, 3-4 parking spaces to be relocated

Project Benefits

- New pedestrian island and crosswalk
 - Shortens crossing distances and allows for safer, more direct pedestrian crossings
- Closing slip lanes
 - Simplifies intersection and provides continuous sidewalk space
 - Shortens crossing distances
- Bus stop improvements
 - Allows for safe space to wait for the bus away from traffic
 - Provides more pedestrian space at heavily used bus stop and in front of school





Questions?

Thank
You

Contact:

Bronx Borough Commissioner's Office at (212) 748-6680 or kkalb@dot.nyc.gov