

Putnam Triangle Plaza

Brooklyn CB2 Transportation Committee, March 17th, 2015



2010 – FAB SPRING TREE GIVEAWAY



COMMUNITY PARTNER



- home
- news & reviews
- about us
- about fort greene & clinton hill
- programs & initiatives
- business directory
- events
- contact us



I am FAB

Delicious food and a rich history of supporting local artists the restaurant reflects the sensibilities of its owner - a Brooklyn Native and longtime Fort Greene resident who has Bajan roots.

[Read More](#)

FAB Fulton



FAB Fulton
Like 1,275



FAB Fulton
51 mins

There's a big birthday happening in Fort Greene this week: the iconic Frank's Lounge (660 Fulton) celebrates 40 years on Fulton Street! Stop by for a toast, tonight at 7pm.

@FABAlliance

Tweets [Follow](#)



FAB Alliance
@FABAlliance
1h

It's getting chilly...grab a warm drink on #FultonSt: @hungryghostbk @babacoolbk #Coffee11238 @BklynBrewed @greengrape Annex and more!



FAB Alliance
@FABAlliance
13h

Tweet to @FABAlliance

Upcoming Events

There are no events at this time.

FAB Newsletter Signup


EMAIL *

[SIGNUP](#)

FAB Supporters




FABlog



Public Workshop: Putnam Plaza Redesign

We want to hear from you! Putnam Triangle Plaza is ready

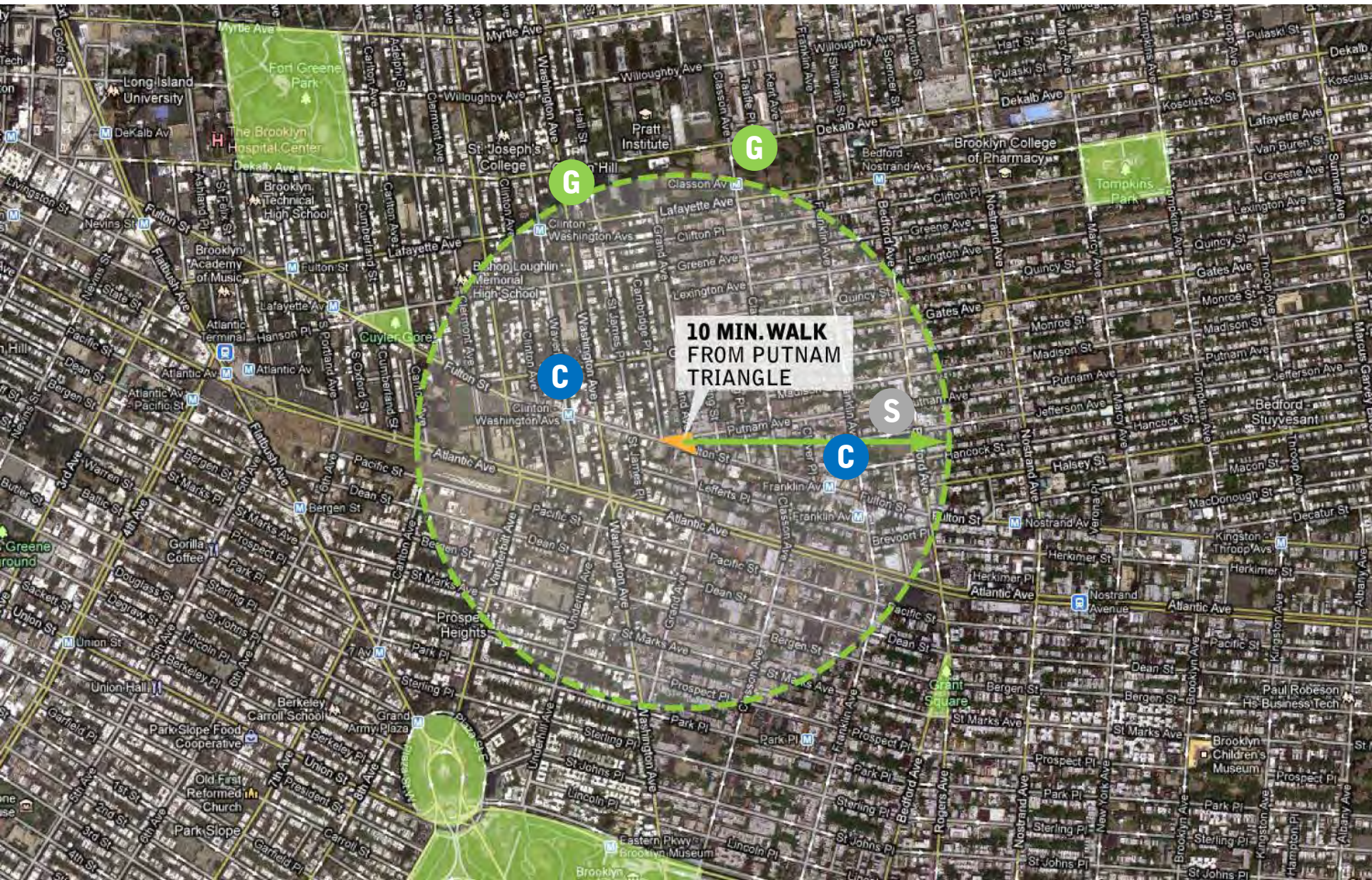
Public Spaces



Plaza at Fowler Square

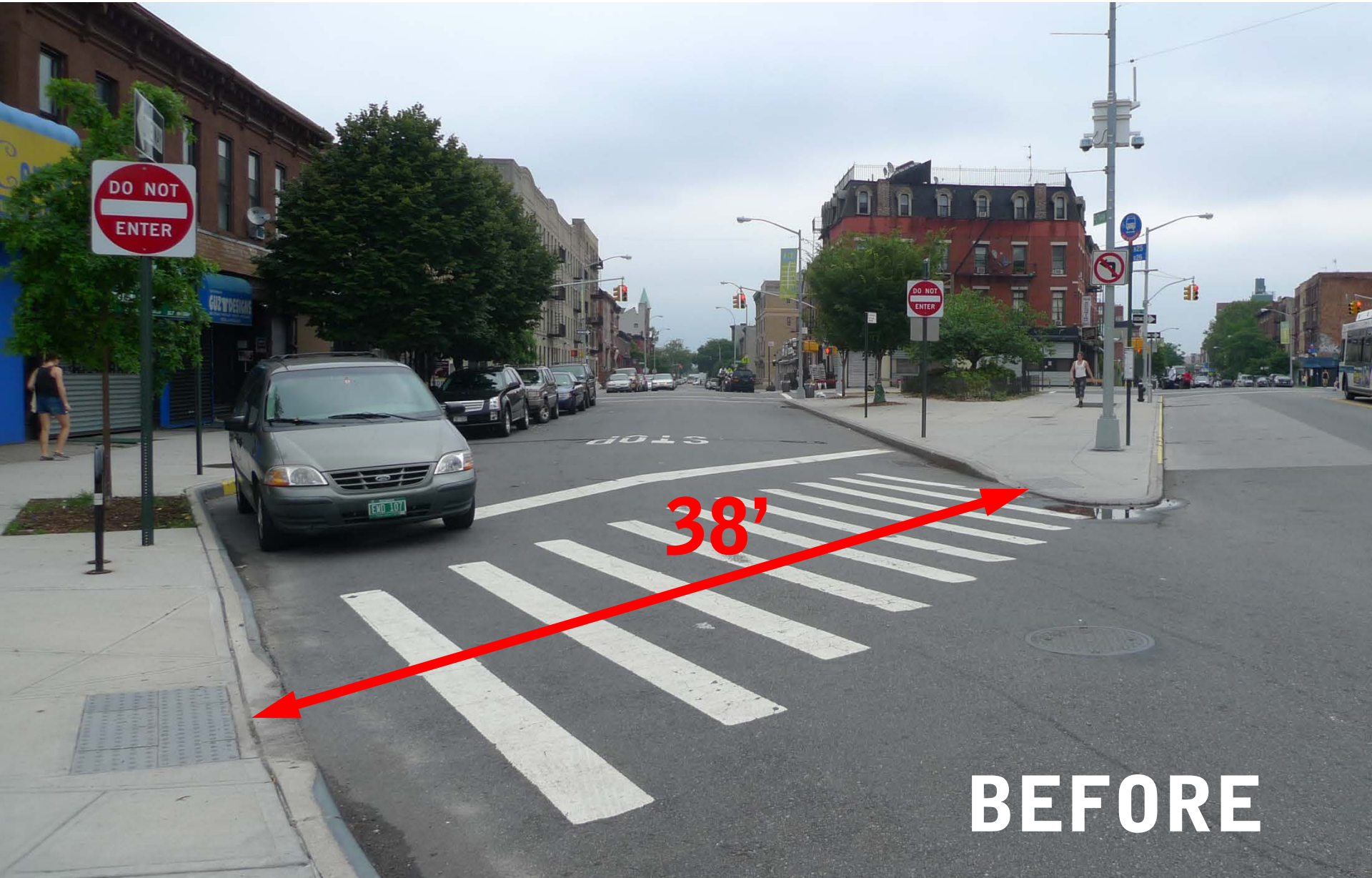
Currently implemented with "temporary materials". Fowler is slated for a redesign.

DOT PRIORITY: Lack of Neighborhood Open Space



DOT PRIORITY: Safety

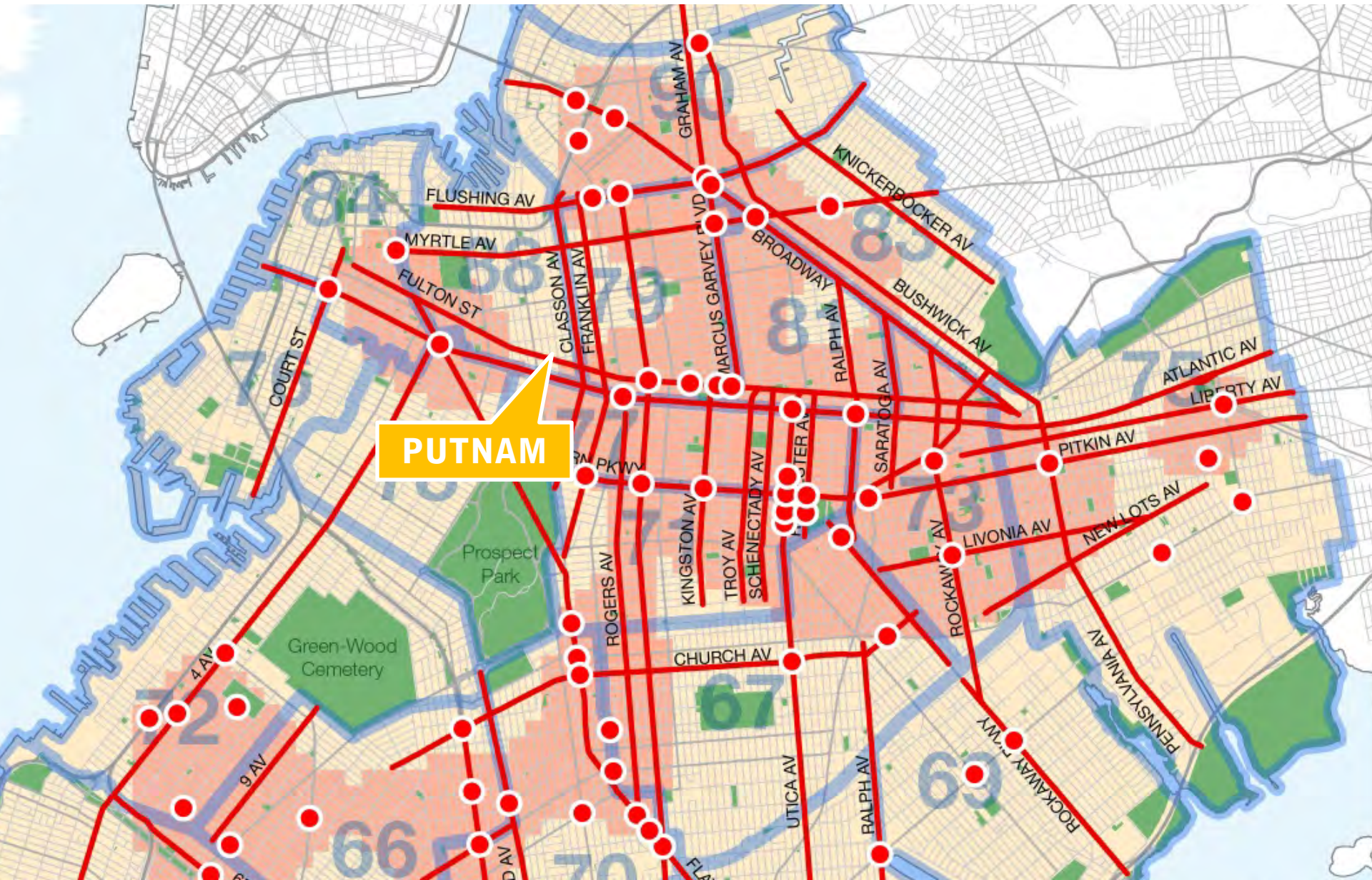
Long, unsignalized crossing



BEFORE

VISION ZERO

Fulton Street is a priority corridor





COMMUNITY WORKSHOP

May 10, 2011

Format

- DOT/FAB Presentation
- Questions and Answers
- Breakout Sessions
- Participant Presentations

Results

-Concerns about past history of crime/drug activity

-Vast majority of participants enthusiastic about plaza concept

-Participants suggested plaza design elements they wanted to see:

- Greenery and Shade
- Seating (fixed and moveable)
- Public Art
- Bus Shelter

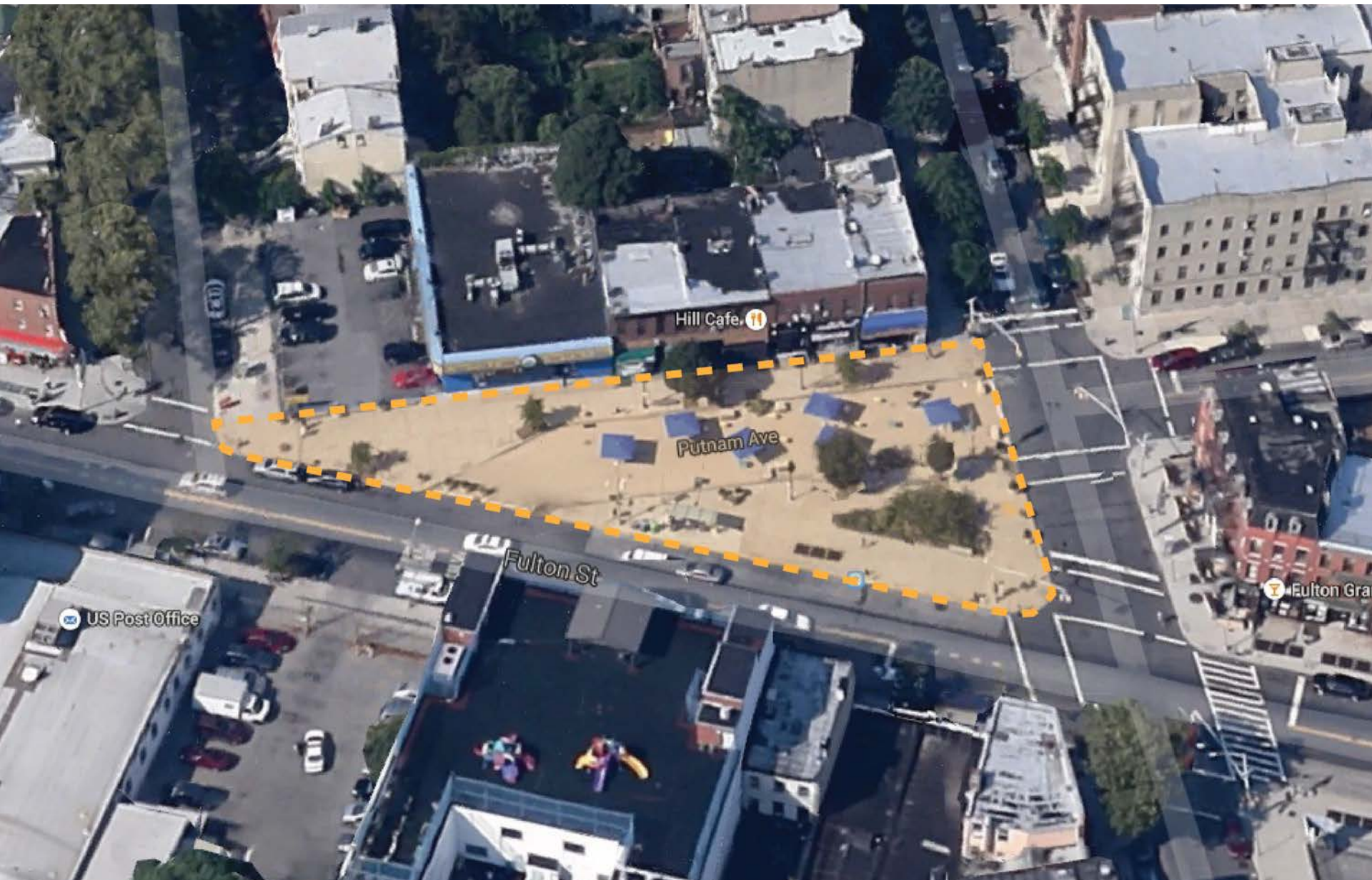
-Participants suggested programming ideas:

- Music Performances
- Dancing
- Community markets/fairs
- Children's activities
- Multi-generational activities (e.g., movies, games)
- Workshops/Educational activities



PLAZA AREA = 15,000SF

Interim Materials Plaza implemented Fall 2011



Previous Bus Alignment, prior to Fulton St reconstruction 2006-09

B25 & B26 bus stops separated, inconvenient for westbound passengers



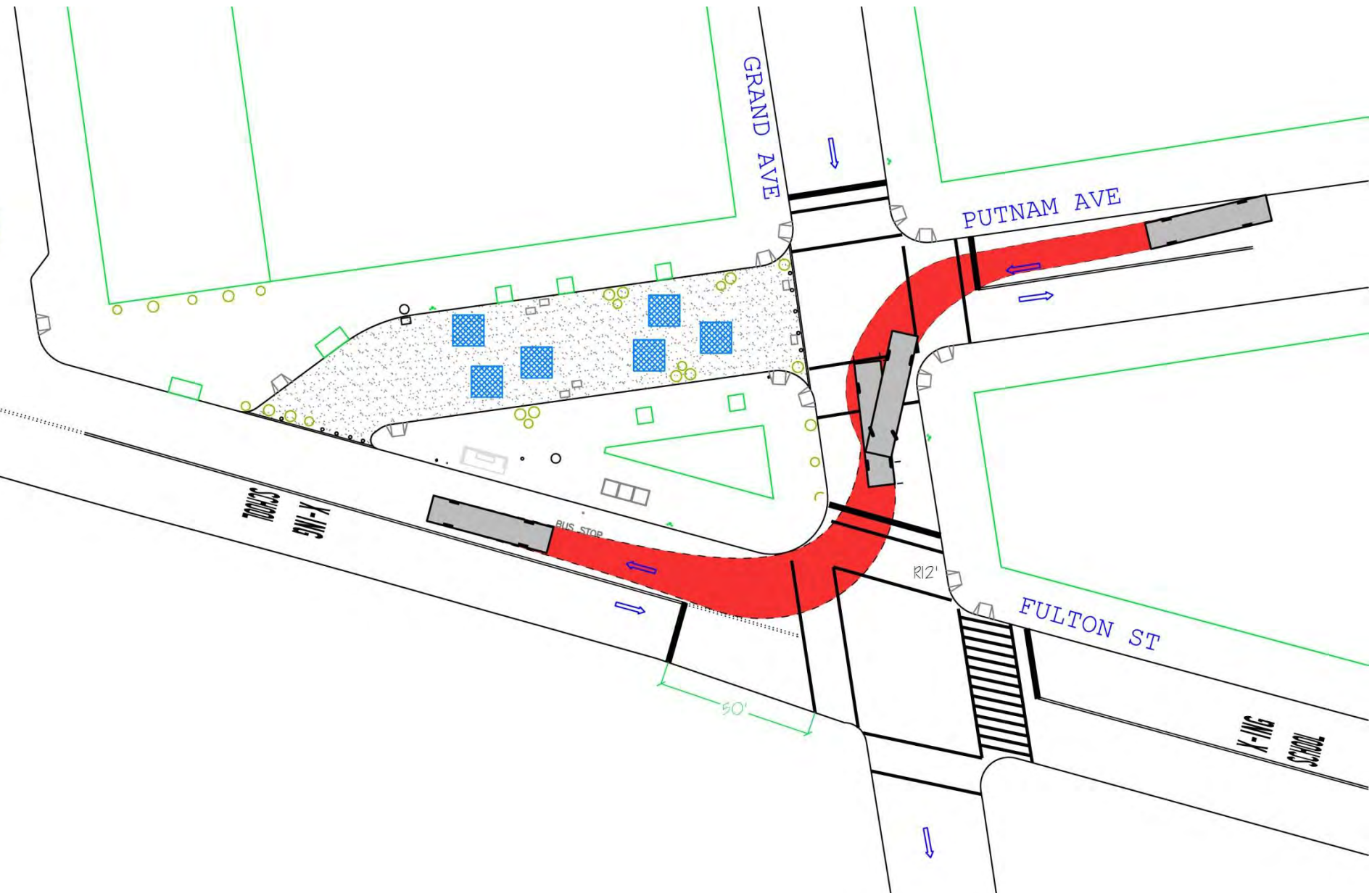
Consolidated Bus Alignment, as requested by CM James and Senior Citizen Center

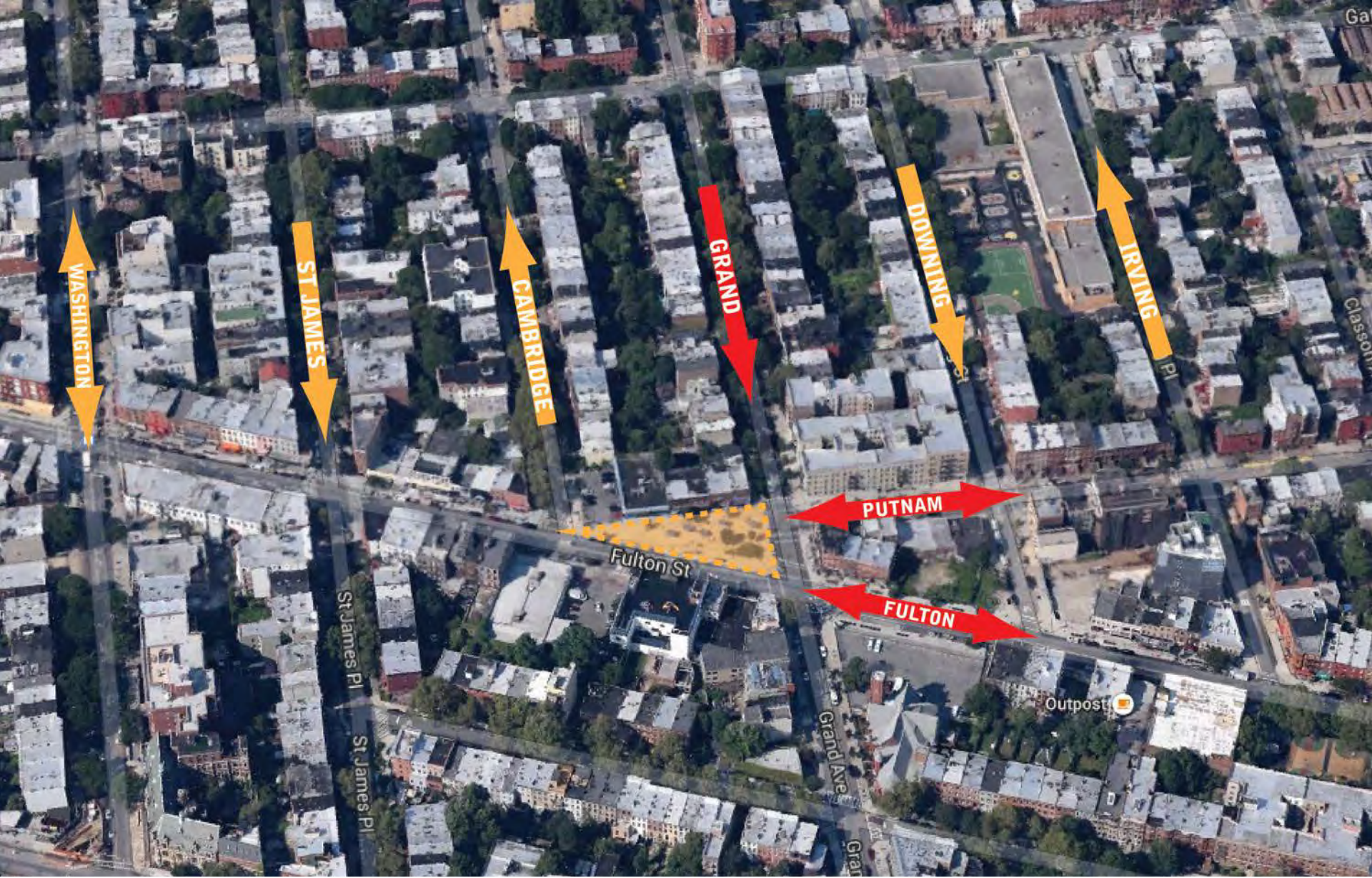
B25 & B26 bus stops consolidated at Fulton/Grand



B25 & B26 Bus Services

NYCT Operations has not reported any problems with intersection geometry despite increase in bus frequency





Peak Hour Before & After Traffic Counts

May 2011, February 2015



Peak Hour Before & After Traffic Counts

Fulton Street AM Peak



Peak Hour Before & After Traffic Counts

Putnam Avenue AM Peak



Peak Hour Before & After Traffic Counts

Grand Avenue AM Peak

BEFORE / AFTER CRASH DATA

Putnam Ave/Grand Ave/Fulton St



Based on crash data between 2008/09 – 2012/13:

Total crashes **down 12%**

Crashes w/injuries **down 50%**

Pedestrian injuries **down 100%**

Total injuries **down 76%**

PUTNAM & FULTON IN 2006

NYPD vehicle regularly parked at the triangle



PUTNAM 2006

Local Headlines

Neighborhoods

06/13/06 9:28am

James, Hynes To Host Grand/Putnam Town Hall

by Brownstoner [No Comments](#)

Neighborhoods

06/22/06 10:15am

Grand & Putnam Gets Lip Service, Maybe More

by Brownstoner [No Comments](#)

[f Like](#) [Share](#) 0

[Tweet](#) 0

[g+1](#) 0

[PinIt](#)



Crime

11/29/06 8:57am

Senator Checks In On Clinton Hill Drug Trade

by Brownstoner [No Comments](#)

[f Like](#) [Share](#) 0

[Tweet](#) 0

[g+1](#) 0

[Submit](#)

[tumblr. +](#)

[PinIt](#)



PUTNAM 2008-2009

Local Headlines

Quality Of Life

Clinton Hill

05/15/08 11:29am

Another Shooting on Grand and Putnam

by Brownstoner [No Comments](#)

Crime

Clinton Hill

05/22/08 9:58am

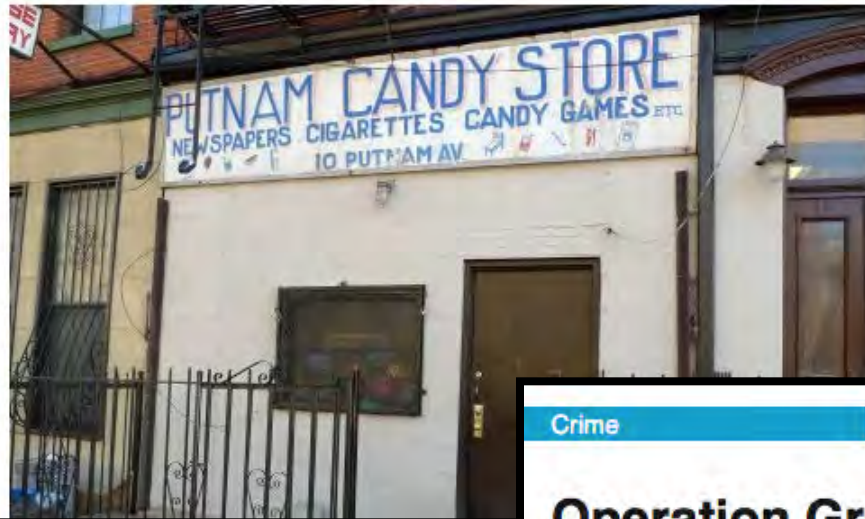
Cop Fired on in Aftermath of Rally at Grand and Putnam

by Brownstoner [No Comments](#)

FG/CH News | March 12, 2009, 12:13 PM

A Neighborhood Candy Store, but Where Are the Mars Bars?

By ANDY NEWMAN



Crime

Clinton Hill

11/24/09 12:26pm

Operation Grand Slam Nabs 11 in Clinton Hill

by Brownstoner [News](#) [No Comments](#)

MetLife Foundation
Community~Police Partnership Award

2012 Award Winner

NEW YORK CITY
DEPARTMENT OF TRANSPORTATION

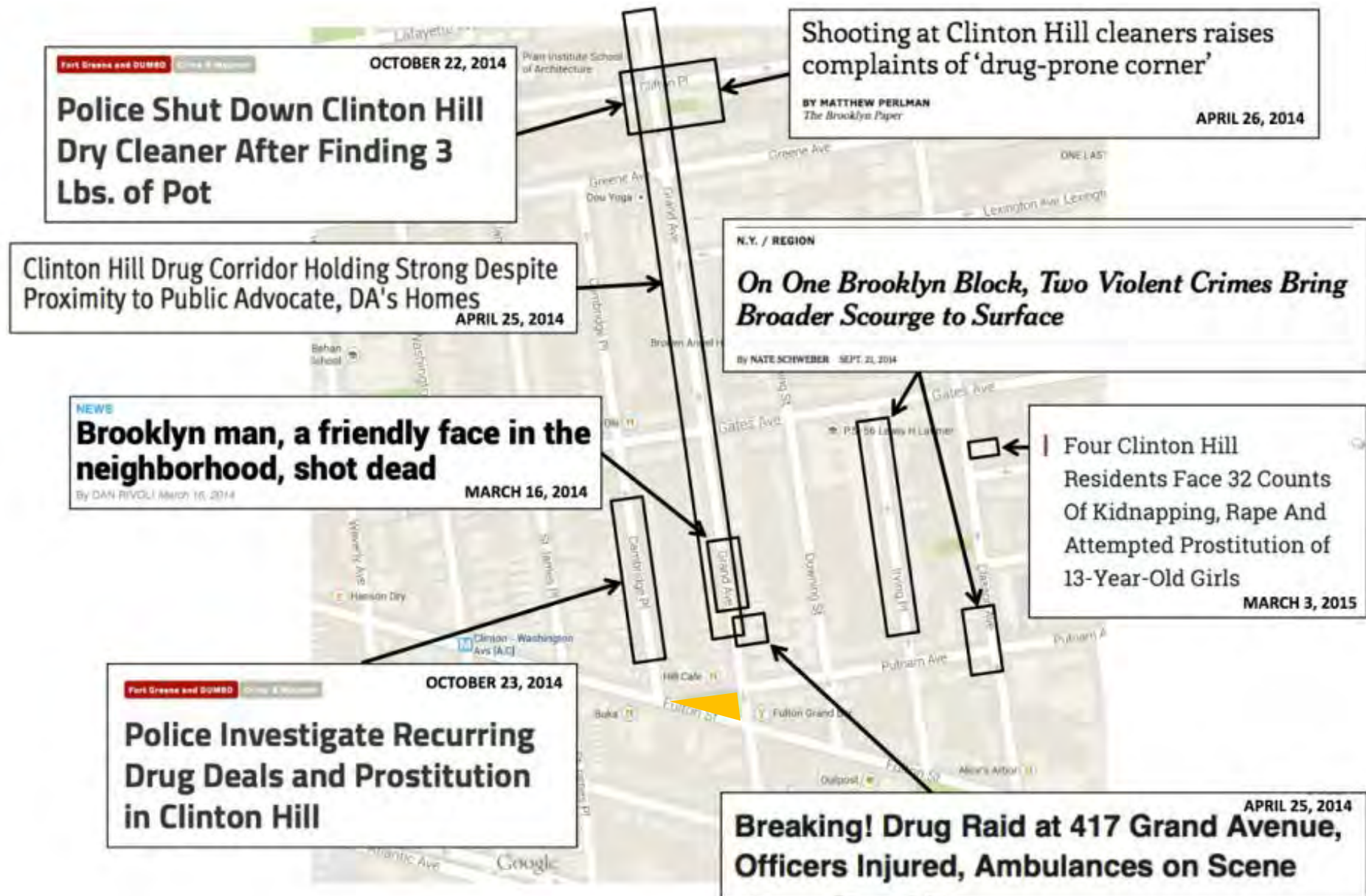
MetLife Foundation and Local Initiatives Support Corporation
present this award in recognition of exemplary collaboration
with the Fulton Area Business Alliance,
the Kings County District Attorney's Office and other partners
to reduce crime and disorder, spur economic development
and enhance the vitality of the Fulton Street corridor.

MetLife Foundation



ONGOING NEIGHBORHOOD CHALLENGES

Crime in south east Clinton Hill over the last year





DOMI
PUTNAM AVE.
HELL
HEAD W

NO PARKING

NO PARKING







ST. GERARD'S SENIOR
COUNCIL, INC.

RISING
STAR

WALTON

Doritos



Puliton Street & Grand Avenue

FRIDAYS
PULITON STREET
ON THE STREET
ARTS & GAMES

reading room

IF I RAN
HOME
PO

BOOKS

THE FAB FRIDAYS









DO NOT
ENTER

Comery, Jr.

TRAINING IS OVER
RELEASE 2
JUNE 13 - 30

@DDAEROBIC



Samantha's
\$3 Specials \$3
▷ Nachos
w/ Cheese
▷ Hot Dog





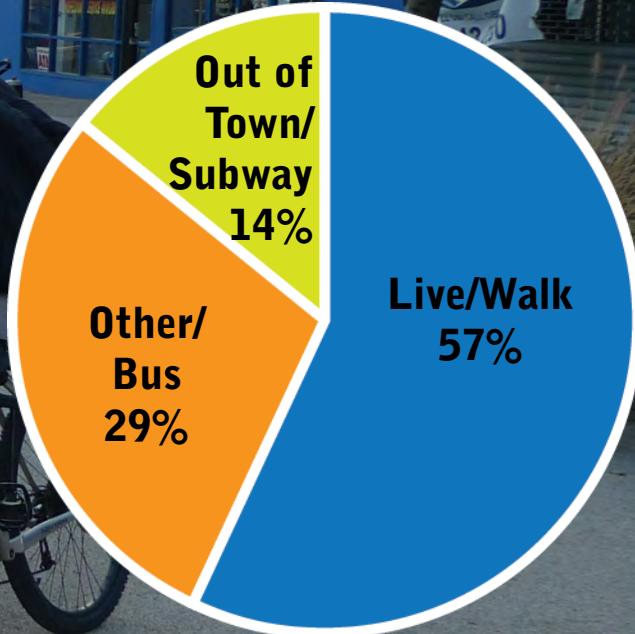
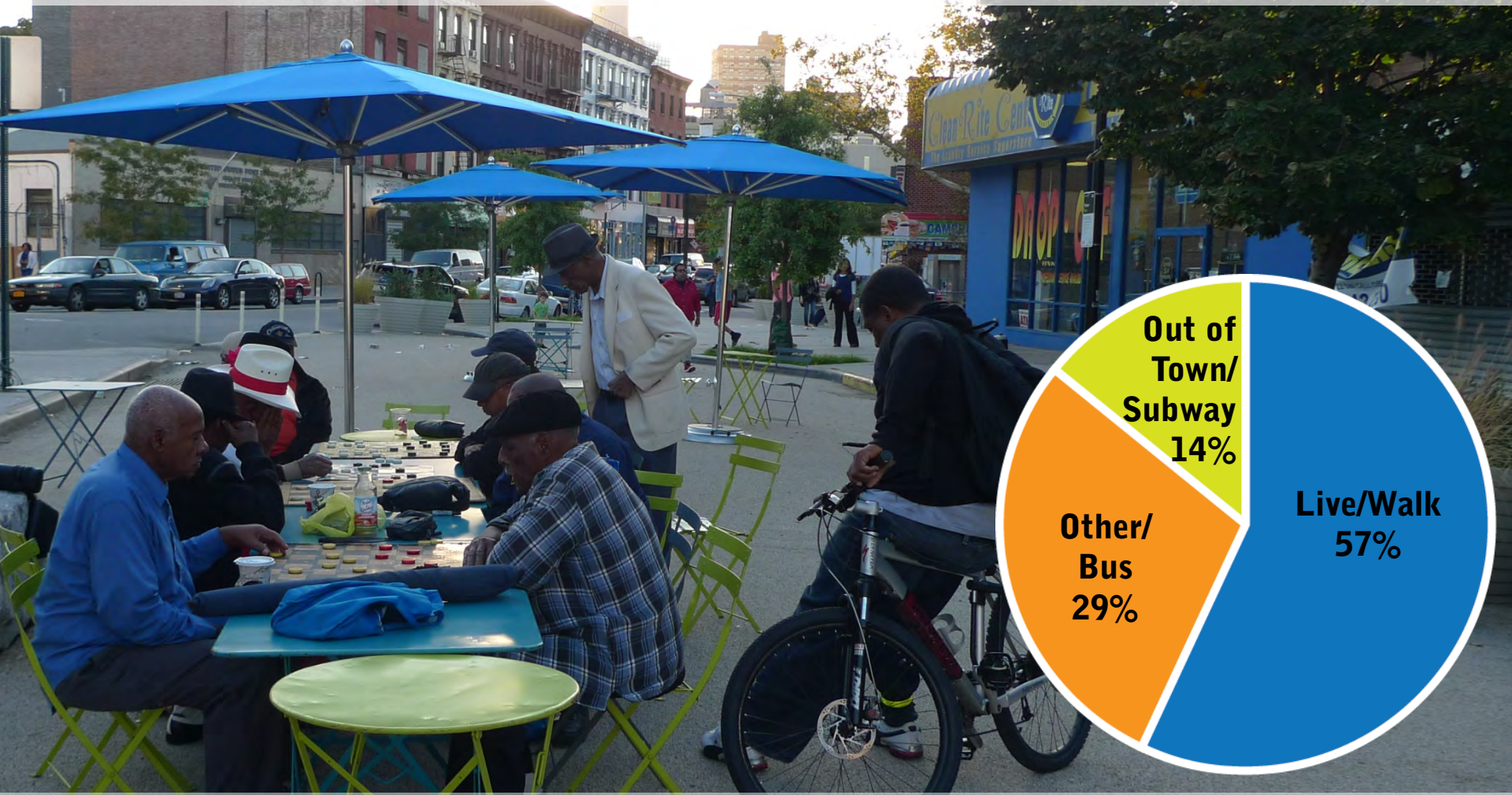


MORE THAN 65 LOCAL PROGRAMMING PARTNERS

2014: 60+ Events 6,000+ Attendees

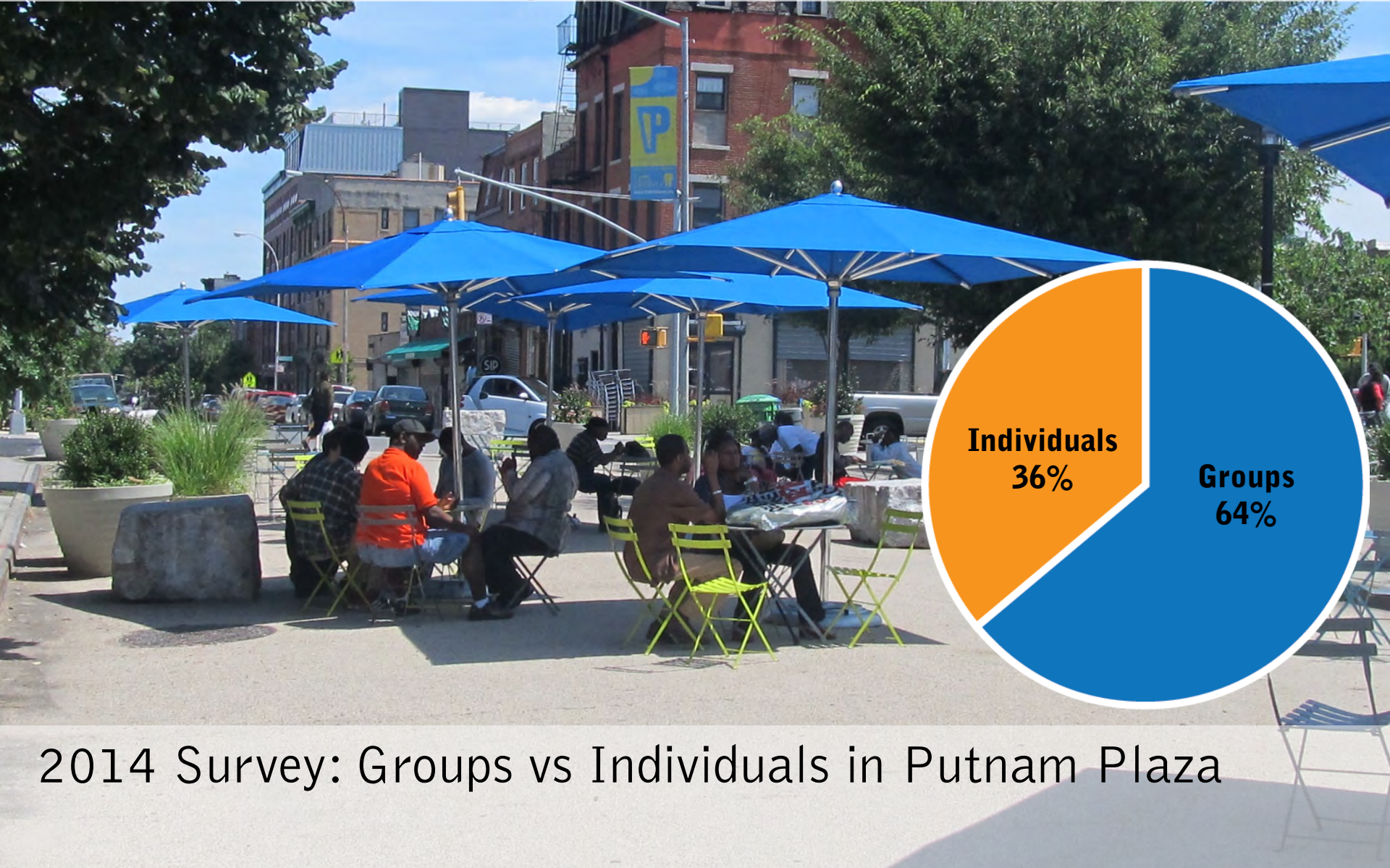


PUTNAM PLAZA IS LOCAL



2014 Survey: Relationship to Area & Arrival

PUTNAM PLAZA IS SOCIAL



Individuals
36%

Groups
64%

2014 Survey: Groups vs Individuals in Putnam Plaza

LOCAL DEVELOPMENT SITES

Clinton Hill is growing and the demand for open space remains.





COMMUNITY WORKSHOPS

September 15, 2014

December 3, 2014

Formats

- DOT/DDC Presentations at Tables
- Discussion and Feedback Gathered at Tables
- DOT/DDC Staffed Boards
- Written Feedback Surveys

Results

- Concerns about ongoing drug activity
- Vast majority of participants enthusiastic about plaza concept
- Most desired elements
 - Shade & plantings but clear sight lines
 - Smooth & even paving
 - Variety of seating w/ backs and armrests for seniors
 - Flexible space to maintain programming
- Participants suggested programming ideas:
 - Music Performances
 - Dancing
 - Community markets/fairs
 - Children's activities
 - Multi-generational activities (e.g., movies, games)
 - Workshops/Educational activities



SUPPORT: RESIDENTS & SENIORS

NYC Department of Transportation
55 Water Street, 6th Floor
New York, NY 10041

RE: Putnam Triangle Plaza Redesign
Fulton Street & Grand Avenue
Clinton Hill, Brooklyn, NY

We are residents who utilize the facilities of the Fort Greene Council, Inc. at 966 and 972 Fulton Street, (Senior Center and Young Minds Day Care Center).

We appreciate the Putnam Triangle Plaza, use it frequently and support the redesign and construction improvements proposed for the Plaza: including trees for more shade, benches with backs, and open space for events and activities we've enjoyed so much. Plus, we like the public safety enhancements, including better lighting.

We have seen this area come a long way from where it was. Things just keep improving, including the corner of Grand and Putnam. While there's still work to do, the creation of the Plaza has been a plus and we look forward to seeing the fully constructed plaza completed.

Sincerely,

HARVEY HALL

Your Name (Print)

Nancy Hall 3/2/15

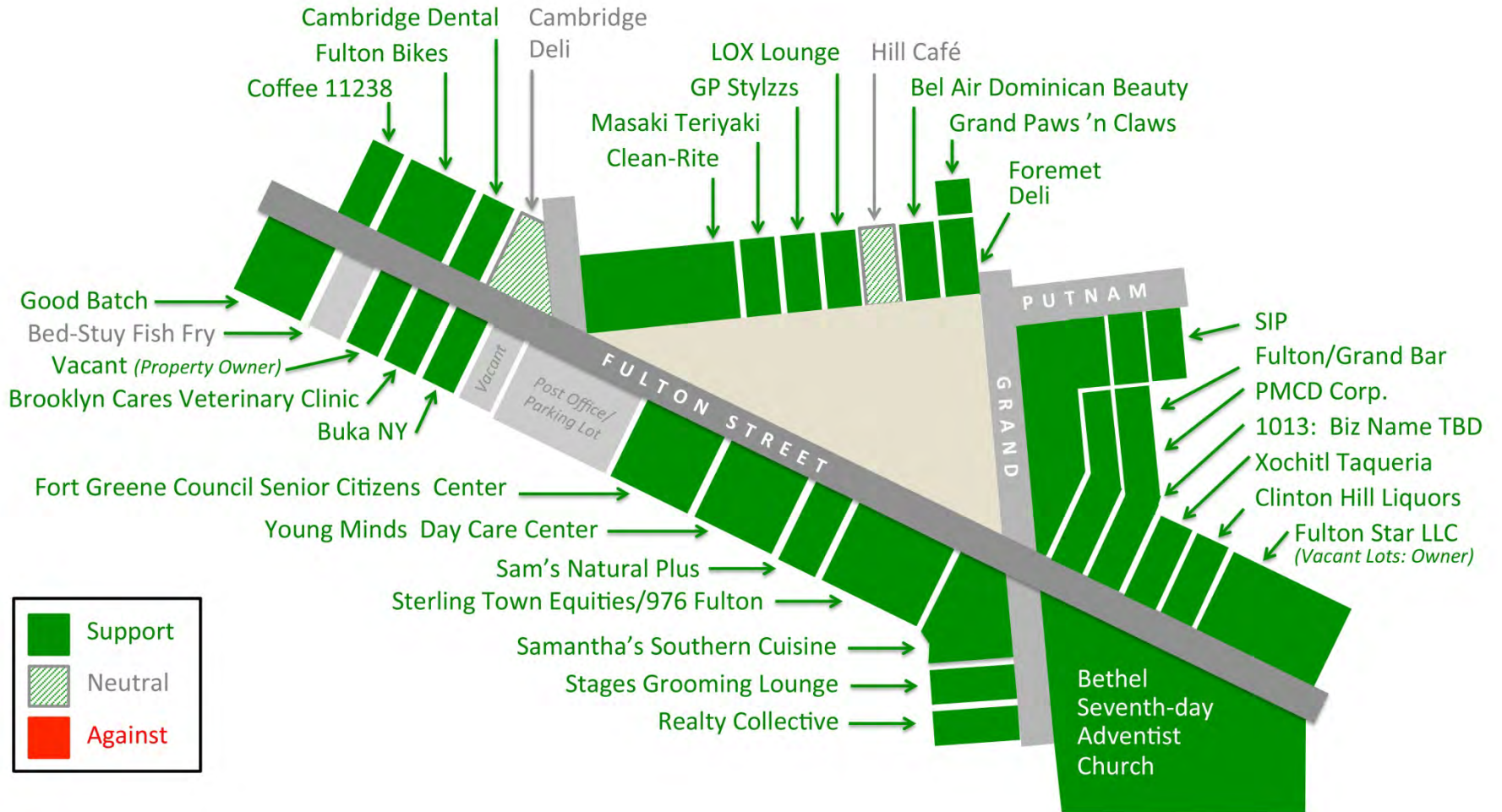
Signature

Date

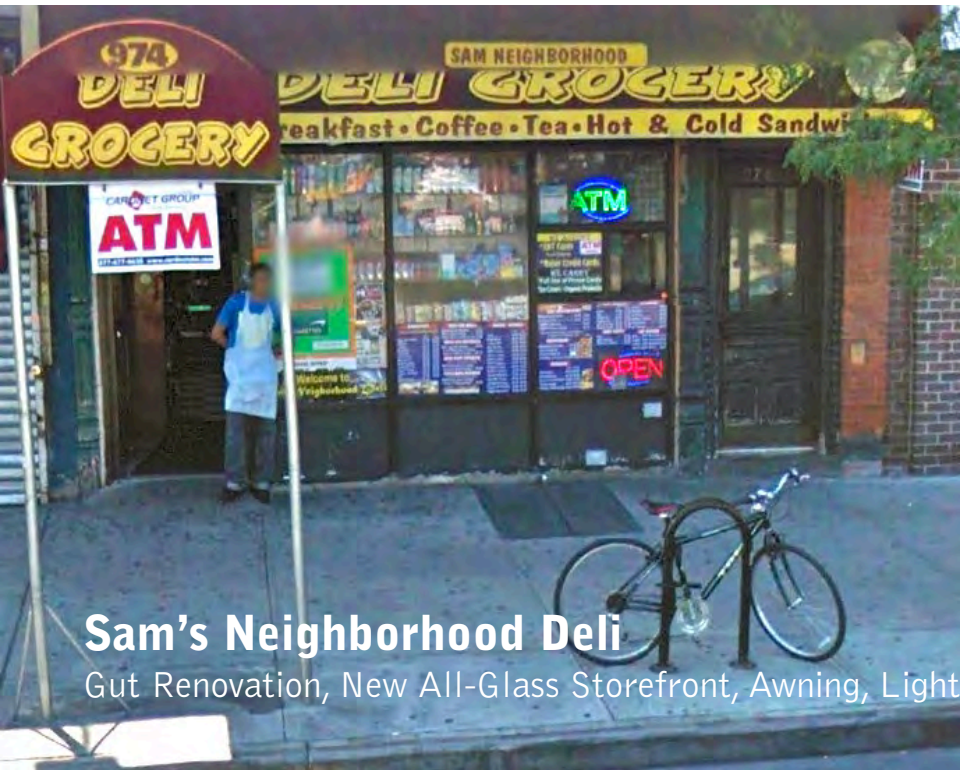
78 Letters

of support from local residents & members of the Fort Greene Council Senior Center & Young Minds Day Care Center.

SUPPORT: LOCAL BUSINESSES



LOCAL BUSINESS INVESTMENT



Sam's Neighborhood Deli

Gut Renovation, New All-Glass Storefront, Awning, Lighting



Foremet Deli & Grocery

New Storefront Windows, New Awning In-Progress

Samantha's Southern

New Liquor License &
Sidewalk Café Application in Development

Masaki Teriyaki

New License to Sell Wine & Beer

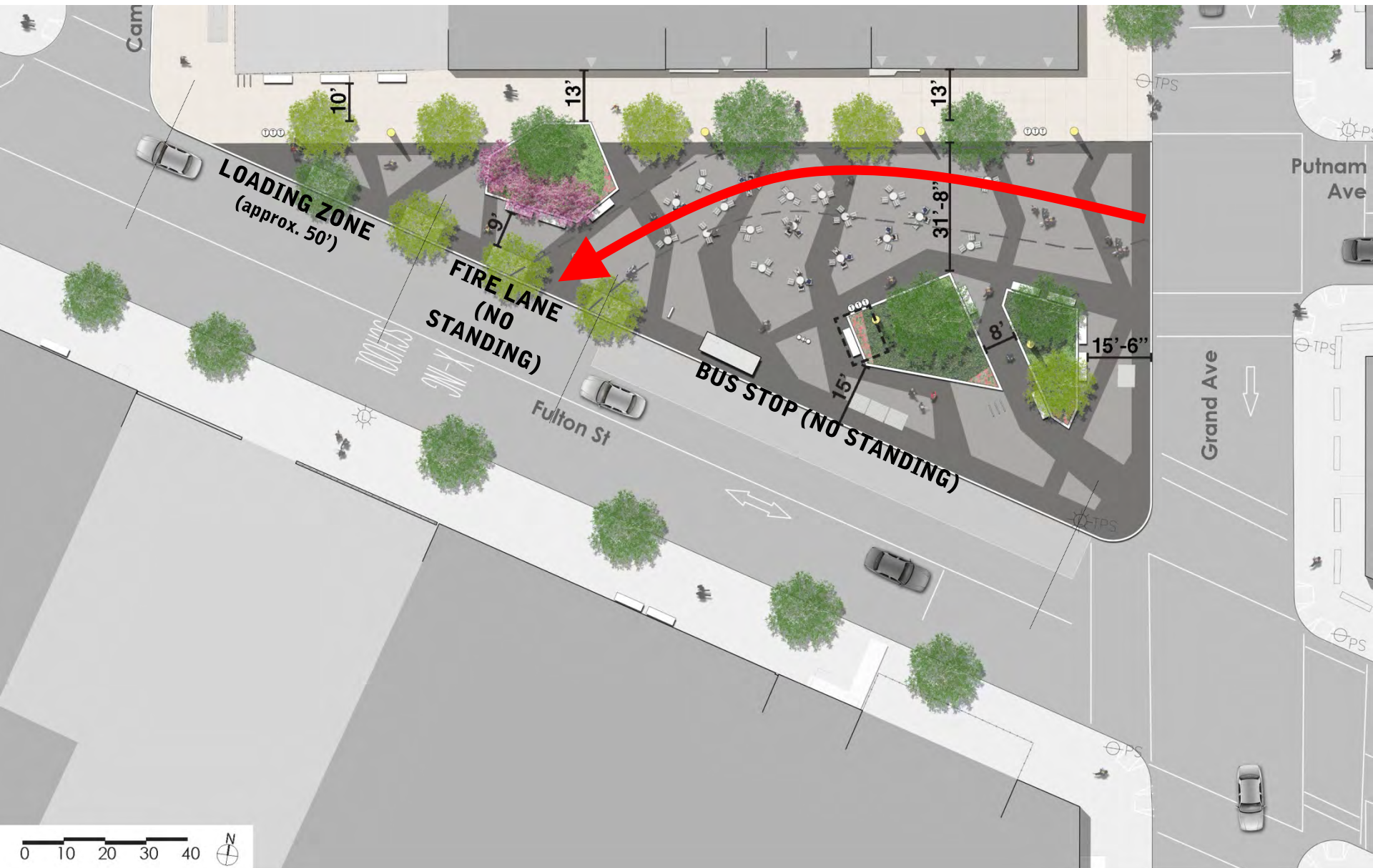
Clean-Rite Laundromat

Parking Lot Beautification, Enclosed Trash Bins,
Improved Lighting, & Removed Clothing Bin

PROPOSED PLAZA PLAN



PROPOSED PLAZA PLAN



PUBLIC ARTWORK OPPORTUNITIES



PROPOSED PLAZA LIGHTING PLAN



○ 'Flushing Meadow' Fixture and Pole

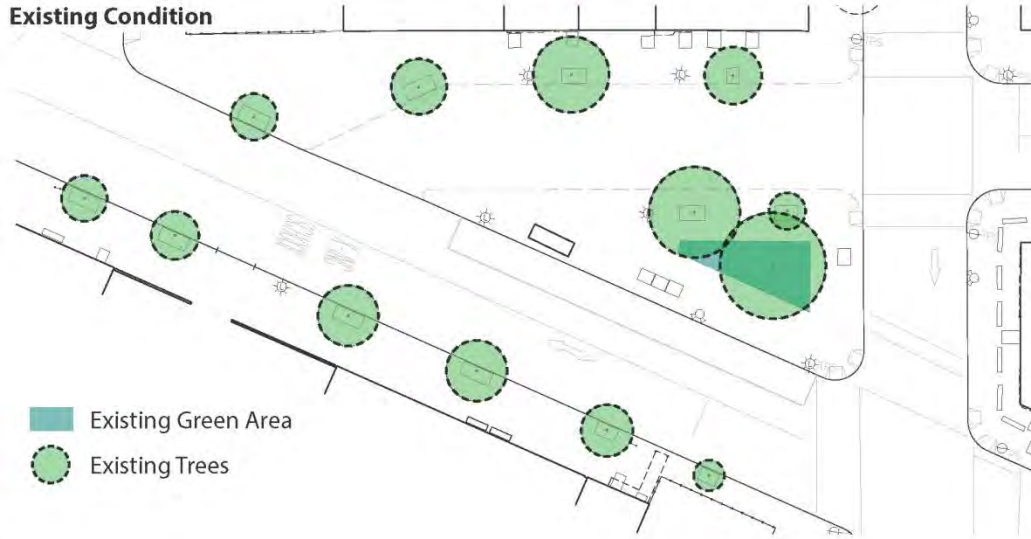
● Street Lights



'Flushing Meadow' Fixture and Pole

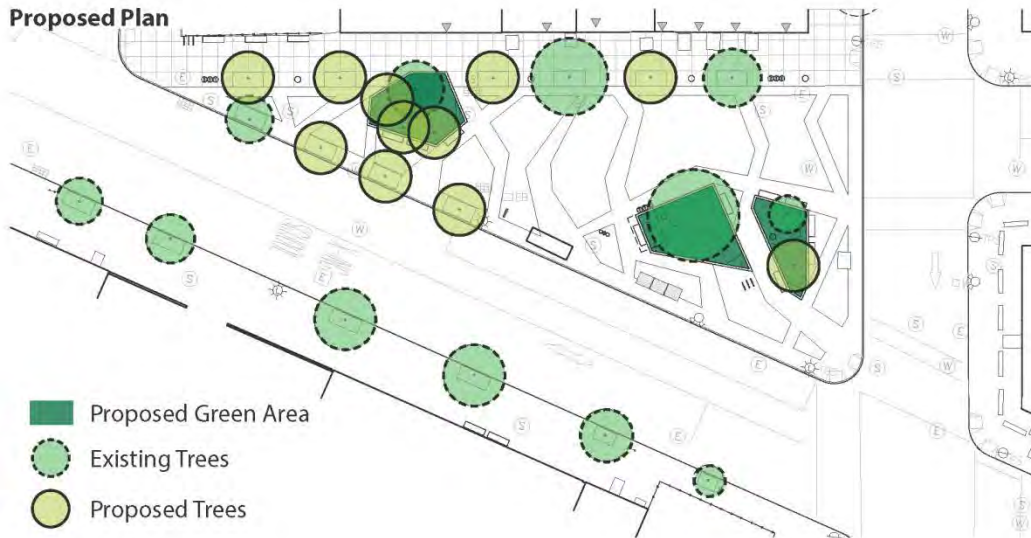
PLANTING COMPARISON

Existing Condition



EXISTING
Planted Area = 590 SF
Trees = 13

Proposed Plan



PROPOSED
Planted Area = 1,386 SF
Trees = 23

FULTON AND GRAND, LOOKING WEST



FROM FULTON, LOOKING NORTH TOWARDS GRAND



FROM CAMBRIDGE PL, LOOKING EAST DOWN FULTON



DESIGN ELEMENTS



CityBench



Movable Tables and Chairs



Drinking Fountain



Paving Pattern



Planting



Trash Receptacle



Bike Racks

FUNDING

\$2.4M Transportation Enhancement Program (TEP) Funding

\$1.047 PlaNYC

\$150k City Council

\$150k Borough President

Total: \$3.751M

TEP is a competitive federal reimbursement program administered by NYSDOT. Putnam Plaza was ranked **#1** in all of New York State.

NEXT STEPS

CB 2 Full Board Vote – April 2015

Public Design Commission Review – May 2015

Design Complete & Public Construction Bid – Winter 2015/2016

Construction Start – Summer 2016

Construction Complete – Summer/Fall 2017

PUTNAM PLAZA IMPROVEMENTS

- **Open Space for Local Residents**
- **Corner Activated with New Uses**
- **Vision Zero: Injuries Down 76%**
- **Improved Sight Lines through Plaza**
- **Increased Planted Area & Trees**
- **Public Safety: Enhanced Lighting**
- **Foot Traffic for Businesses**
- **Community Space for Free Events, Activities & Public Art**

