

# Canarsie Pier Connector

E 108<sup>th</sup> St, Seaview Av, E 102<sup>nd</sup> St, Shore Pkwy, Canarsie Circle



# Background

**Requests for Improved  
Access to Canarsie Pier**

**Jamaica Bay  
Greenway Workshops**

**NY Rising, Canarsie**

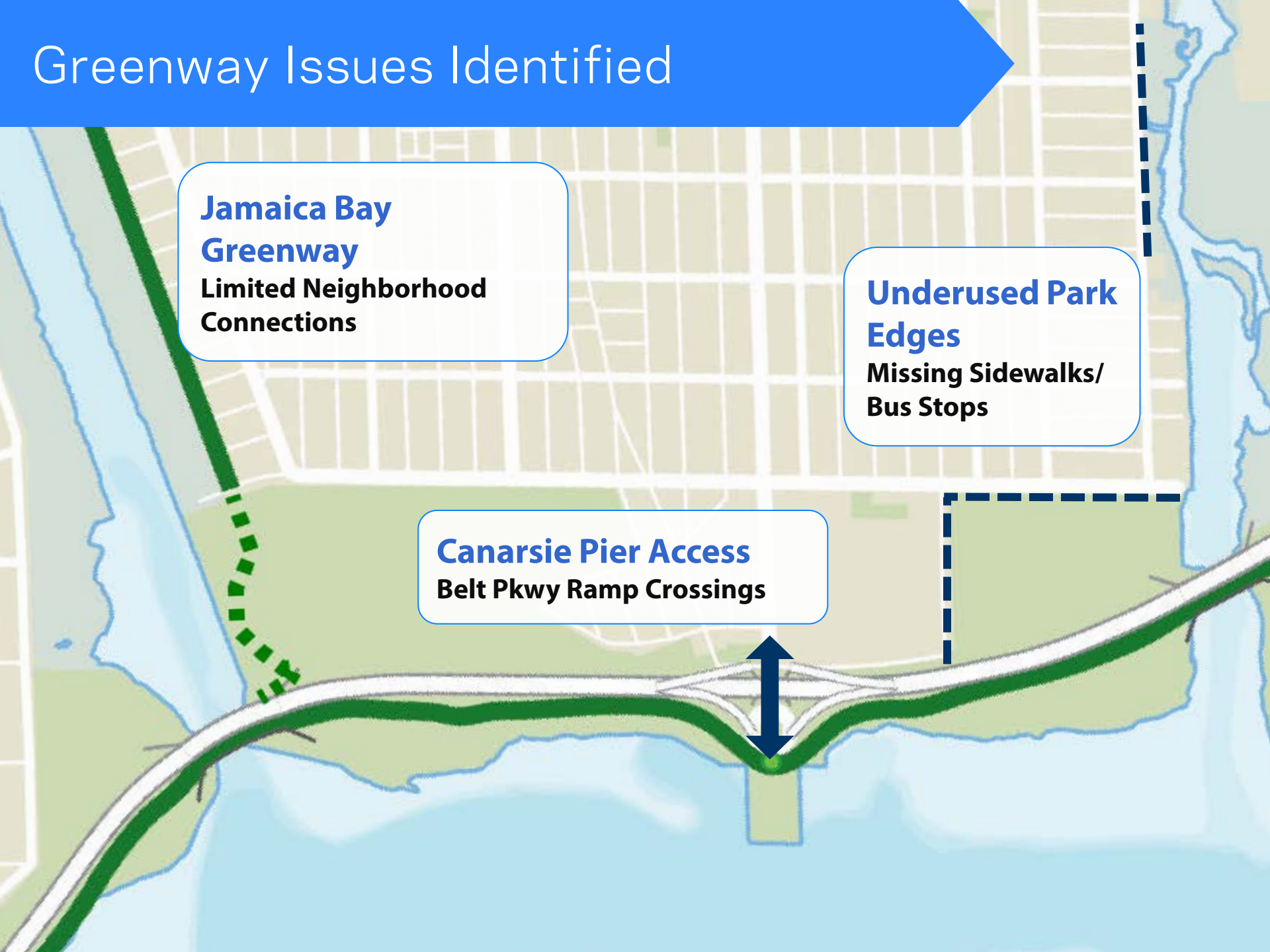


# Greenway Issues Identified

**Jamaica Bay  
Greenway**  
Limited Neighborhood  
Connections

**Underused Park  
Edges**  
Missing Sidewalks/  
Bus Stops

**Canarsie Pier Access**  
Belt Pkwy Ramp Crossings



# Proposed Improvements

## #2 Protected path

- Greenway access on both sides of neighborhood
- Link parks into whole

## #1 Canarsie Circle

- Install safety improvements



# # 1 Canarsie Circle

16,000 annual visitors to Canarsie Pier arrive by foot or bicycle

Highway traffic through Canarsie Circle



Issues Identified

# Canarsie Circle

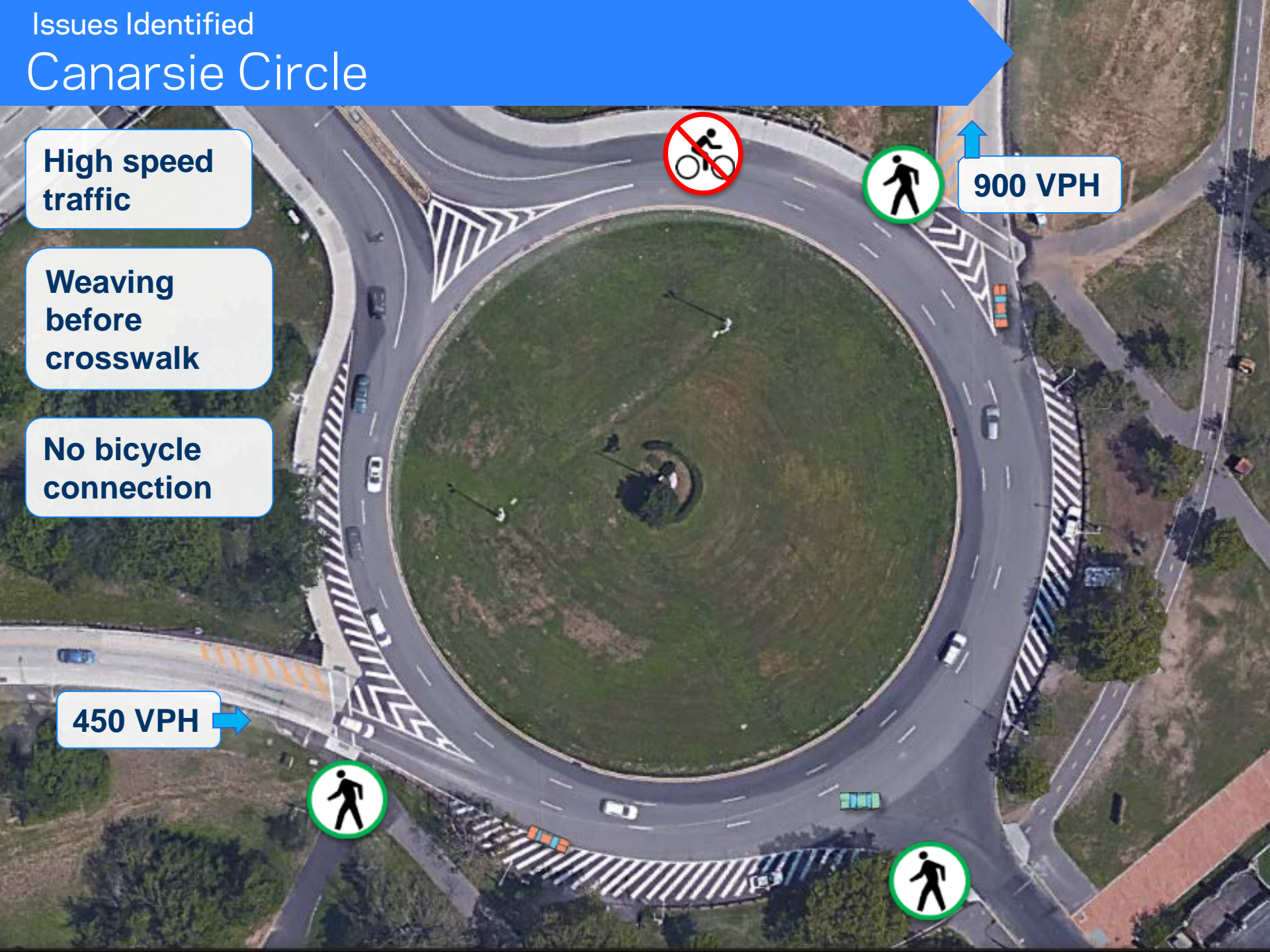
High speed traffic

Weaving before crosswalk

No bicycle connection

450 VPH

900 VPH



# Proposed Improvements Canarsie Circle

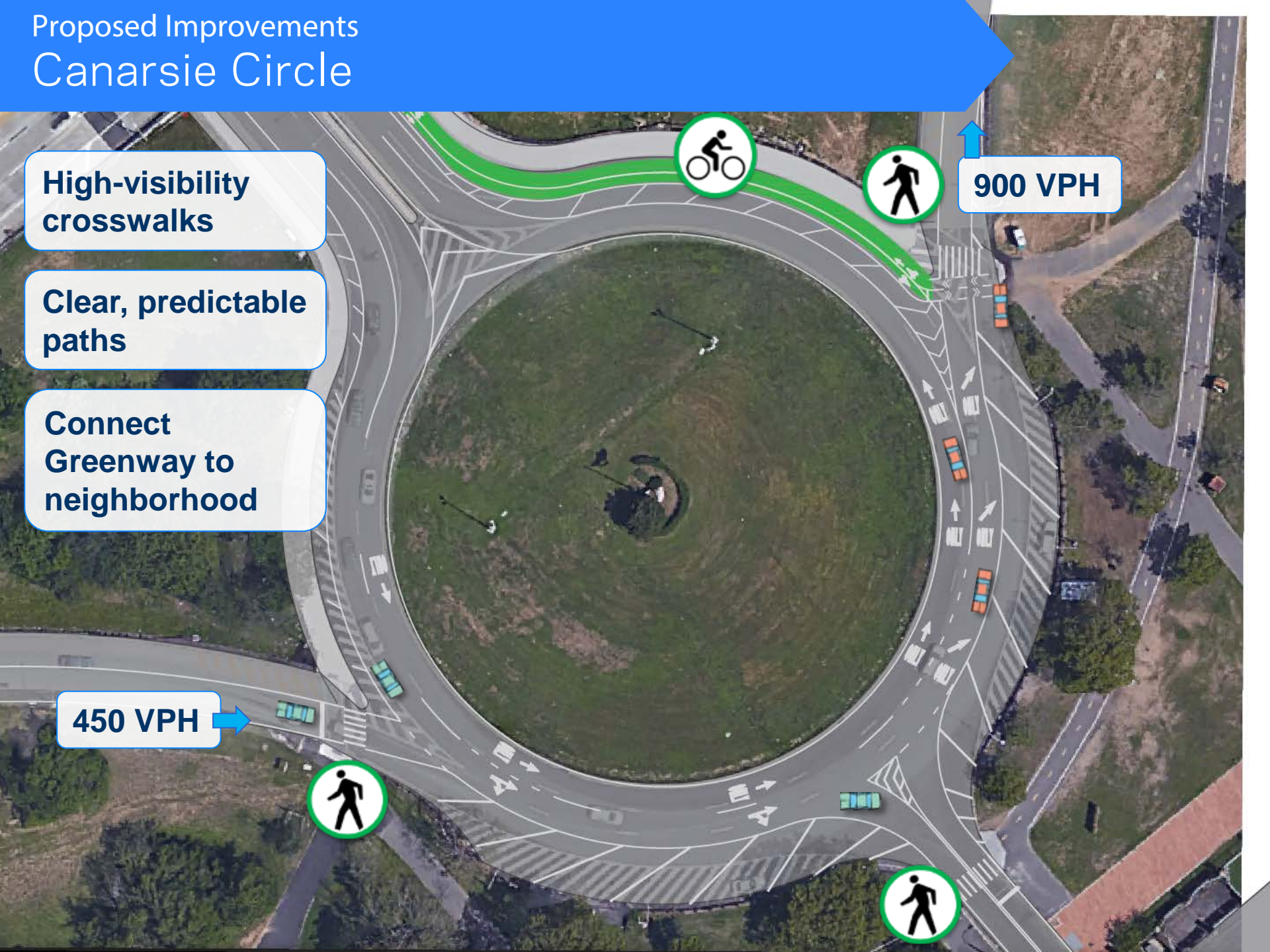
High-visibility  
crosswalks

Clear, predictable  
paths

Connect  
Greenway to  
neighborhood

450 VPH

900 VPH

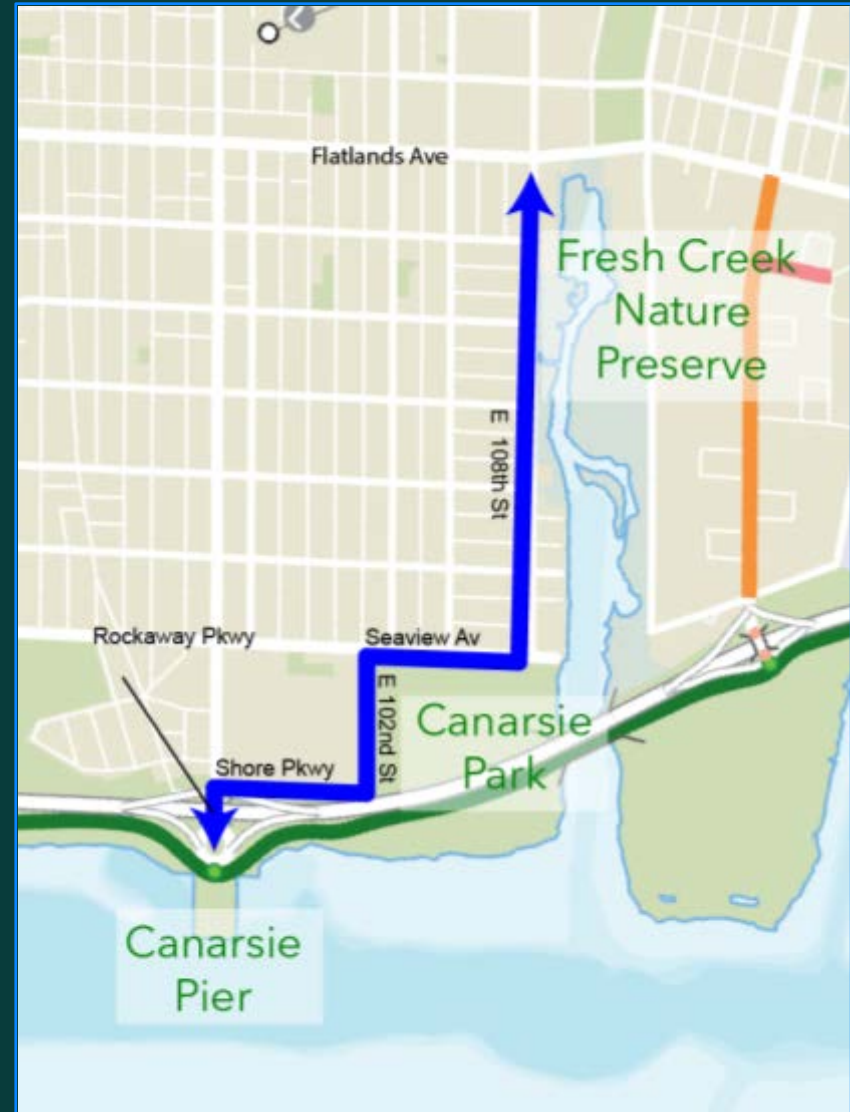


# #2 Protected Path

Create continuous path linking parks

Separates people from traffic

Capitalize on existing road space





# Existing Conditions

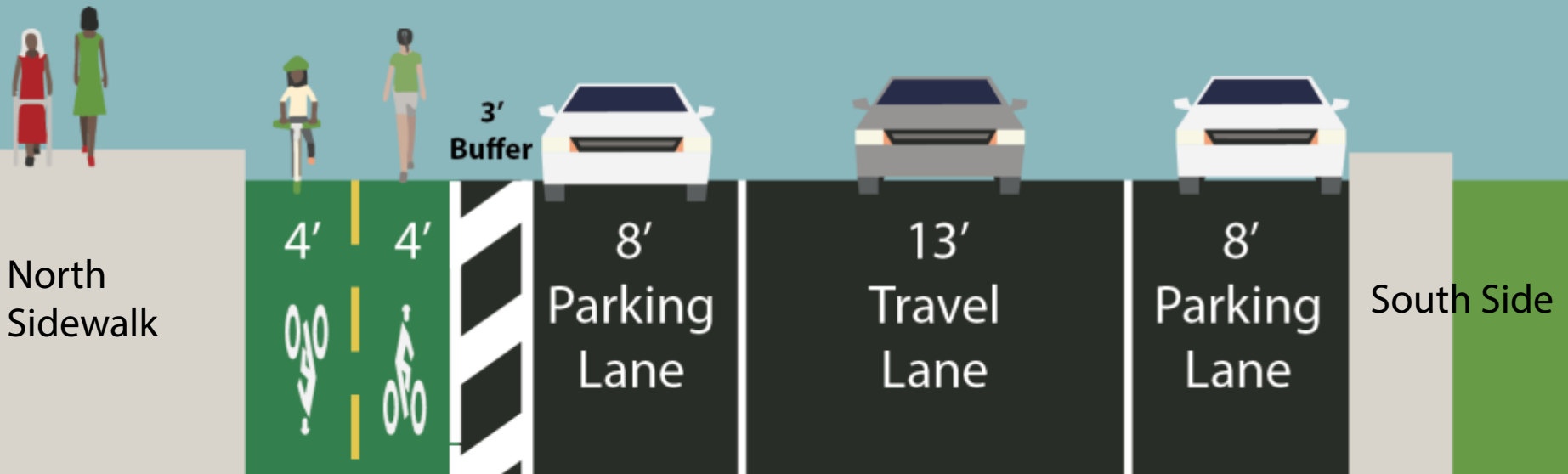
## Shore Parkway (Service Rd)



# Existing & Proposed Shore Parkway



**Use excess roadway space to create parking-protected path**



# Proposed Configuration Shore Parkway



# Existing Conditions E 102<sup>nd</sup> St



Missing sidewalk

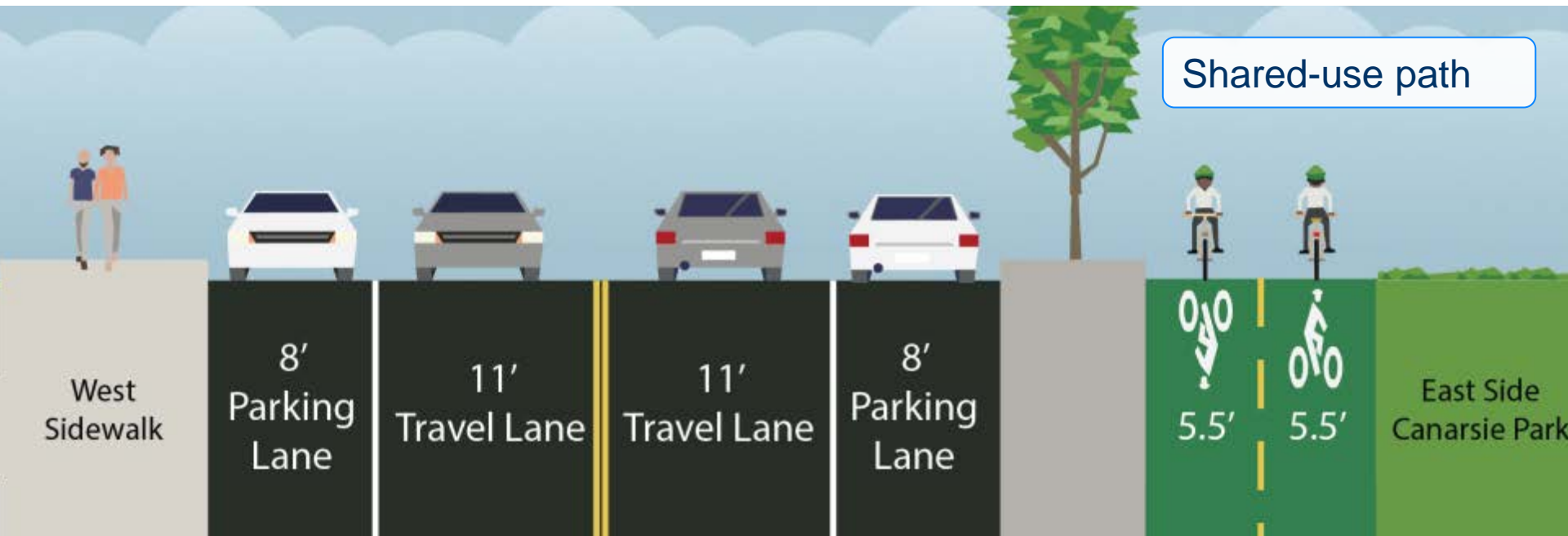
Extra wide roadway



# Proposed Configuration E 102<sup>nd</sup> St



## Create parking-protected shared-use path



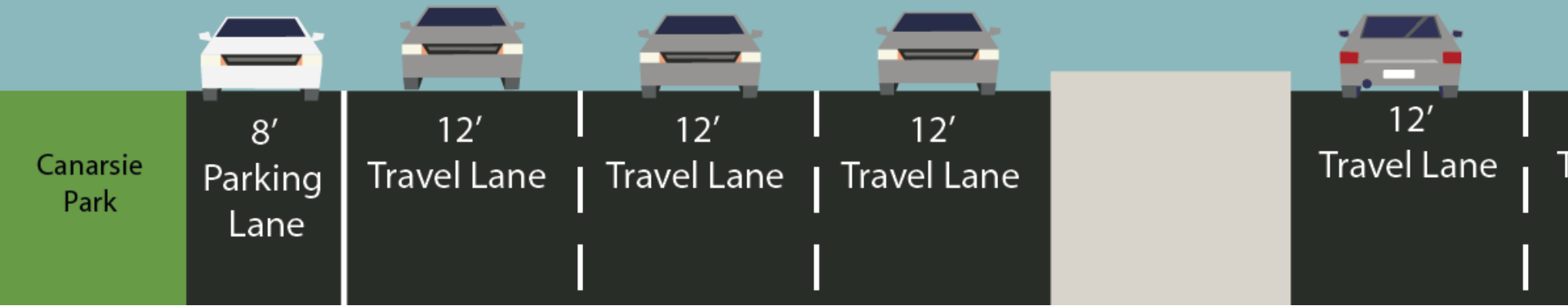
# Existing Conditions Seaview Ave

Missing sidewalks

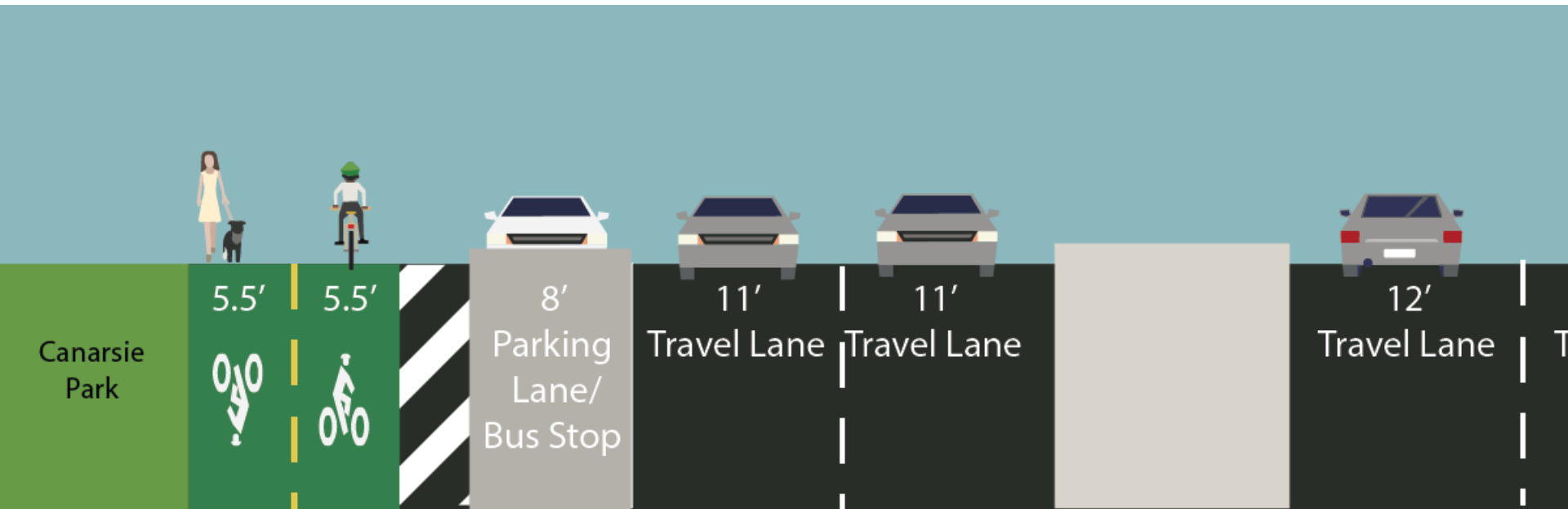
250 EB VPH



# Existing & Proposed Shore Parkway



**Create parking-protected shared-use path, install bus island at 105<sup>th</sup> St stop**

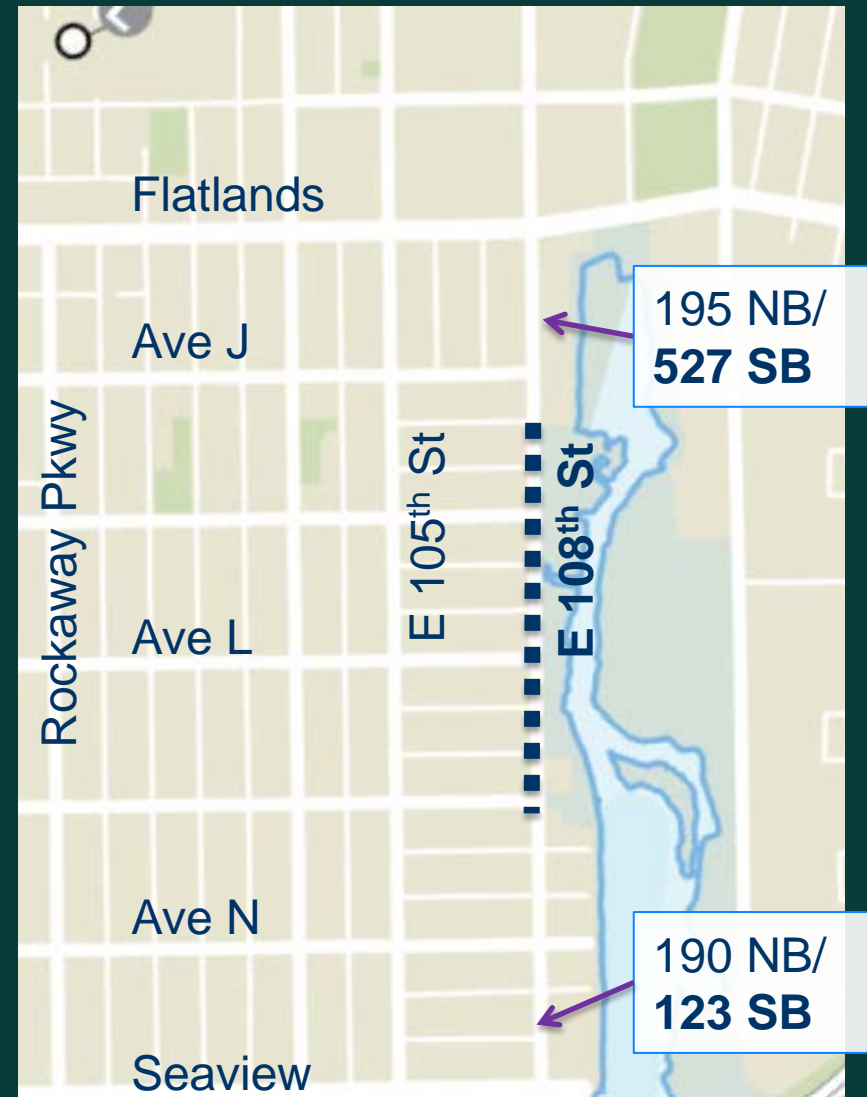


# Existing Conditions

## E 108<sup>th</sup> St

Missing sidewalks

Cut-through traffic





# Proposed Short-Term Configuration

## E 108<sup>th</sup> St



### One-way conversion between Seaview Ave and Ave J

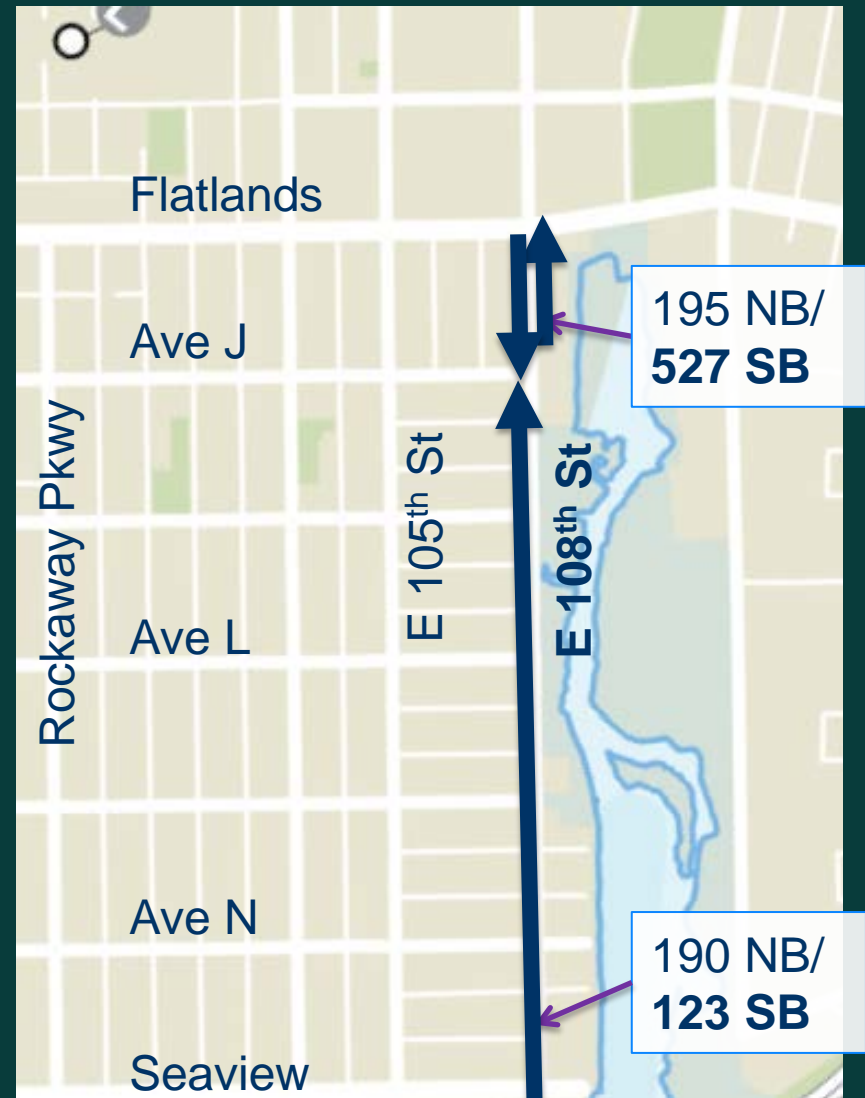


# Proposed Configuration

## E 108<sup>th</sup> St

Protected path

One-way conversion (Seaview to Ave J)



# Summary

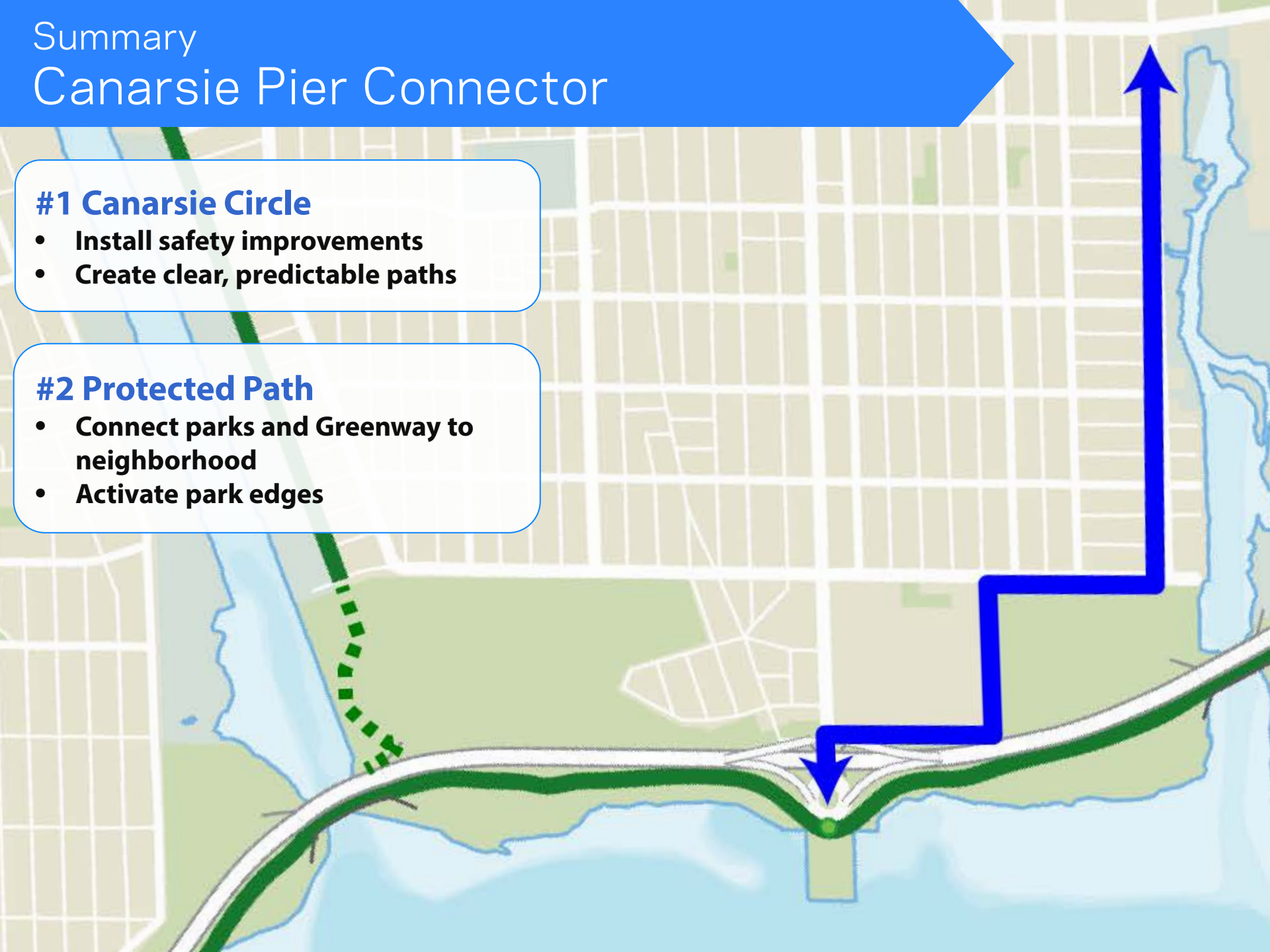
## Canarsie Pier Connector

### #1 Canarsie Circle

- Install safety improvements
- Create clear, predictable paths

### #2 Protected Path

- Connect parks and Greenway to neighborhood
- Activate park edges



# Canarsie Pier Connector

Questions?

Thank  
You!

