

Lincoln Center Bow Tie

Pedestrian Safety Improvement Workshop

2014



Commissioner Polly Trottenberg New York City Department of Transportation
Presented by the Pedestrian Projects Group on June 4, 2014

Community Board 7 Manhattan



Lincoln Center Bow Tie

Agenda

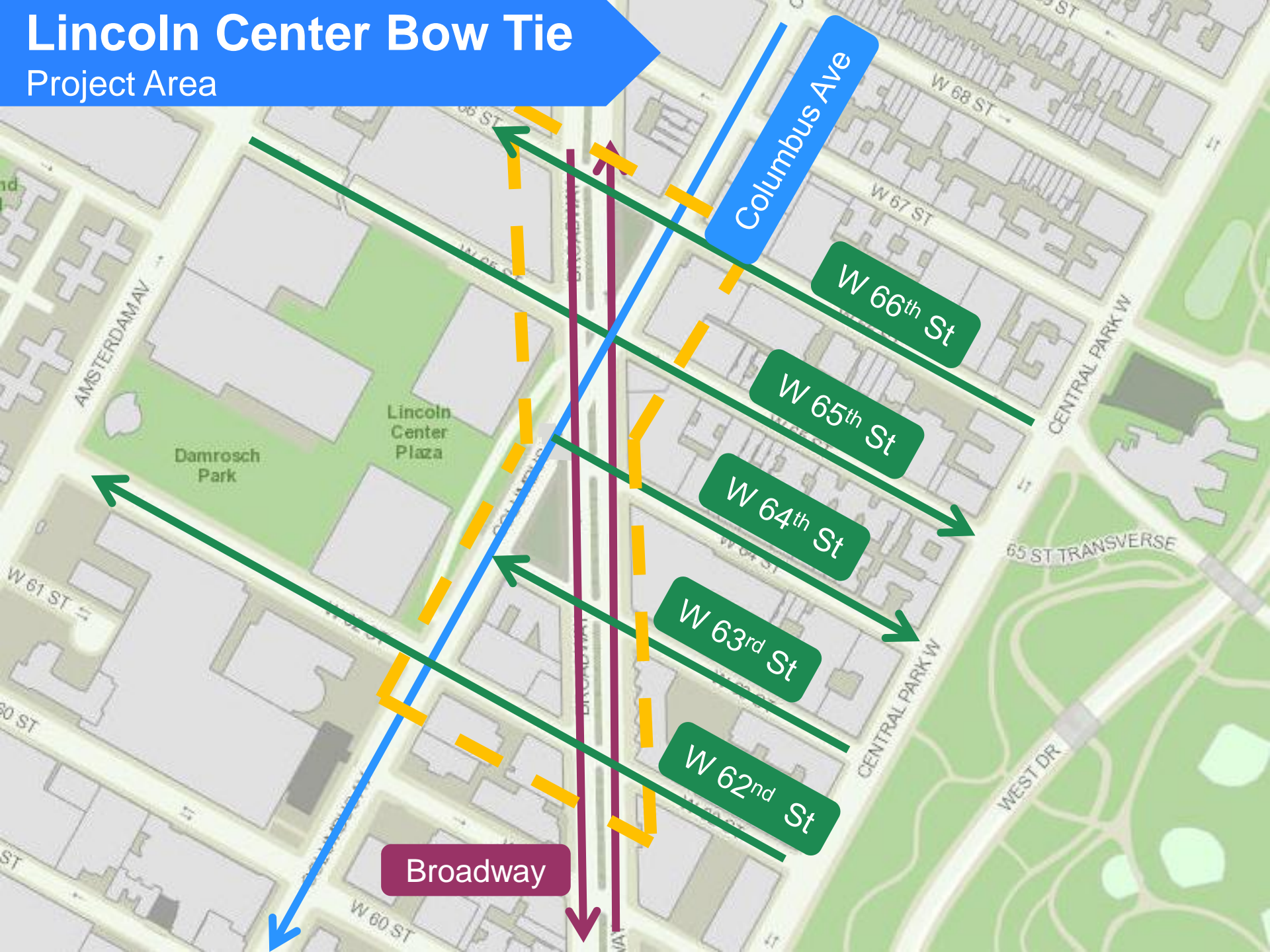
Tonight's Agenda

- Project presentation (15 min)
- Map activity (45 min)
- Groups report back (15 min)



Lincoln Center Bow Tie

Project Area



Columbus Ave

W 66th St

W 65th St

W 64th St

W 63rd St

W 62nd St

Broadway

AMSTERDAM AV

Lincoln Center Plaza

Damrosch Park

CENTRAL PARK W

65 ST TRANSVERSE

WEST DR

W 60 ST

CENTRAL PARK W

W 68 ST

W 67 ST

W 61 ST

W 60 ST

W 59 ST

Lincoln Center Bow Tie

Why are we here?



2013 - DOT installed protected lanes on Columbus Ave

Lincoln Center Bow Tie

Why are we here?

BLUEPRINT

FOR THE UPPER WEST SIDE

A roadmap for truly livable streets.



Safe Streets for Seniors

Upper West Side, Manhattan

FINAL REPORT
January 31, 2011

Janette Sadik-Khan, Commissioner

WEST SIDE MANHATTAN TRANSPORTATION STUDY



Technical Memorandum No. 2 Future Conditions & Recommendations Final Report

May 2013



A Member of
the New York Metropolitan
Transportation Council

Lincoln Center Bow Tie

Why are we here?

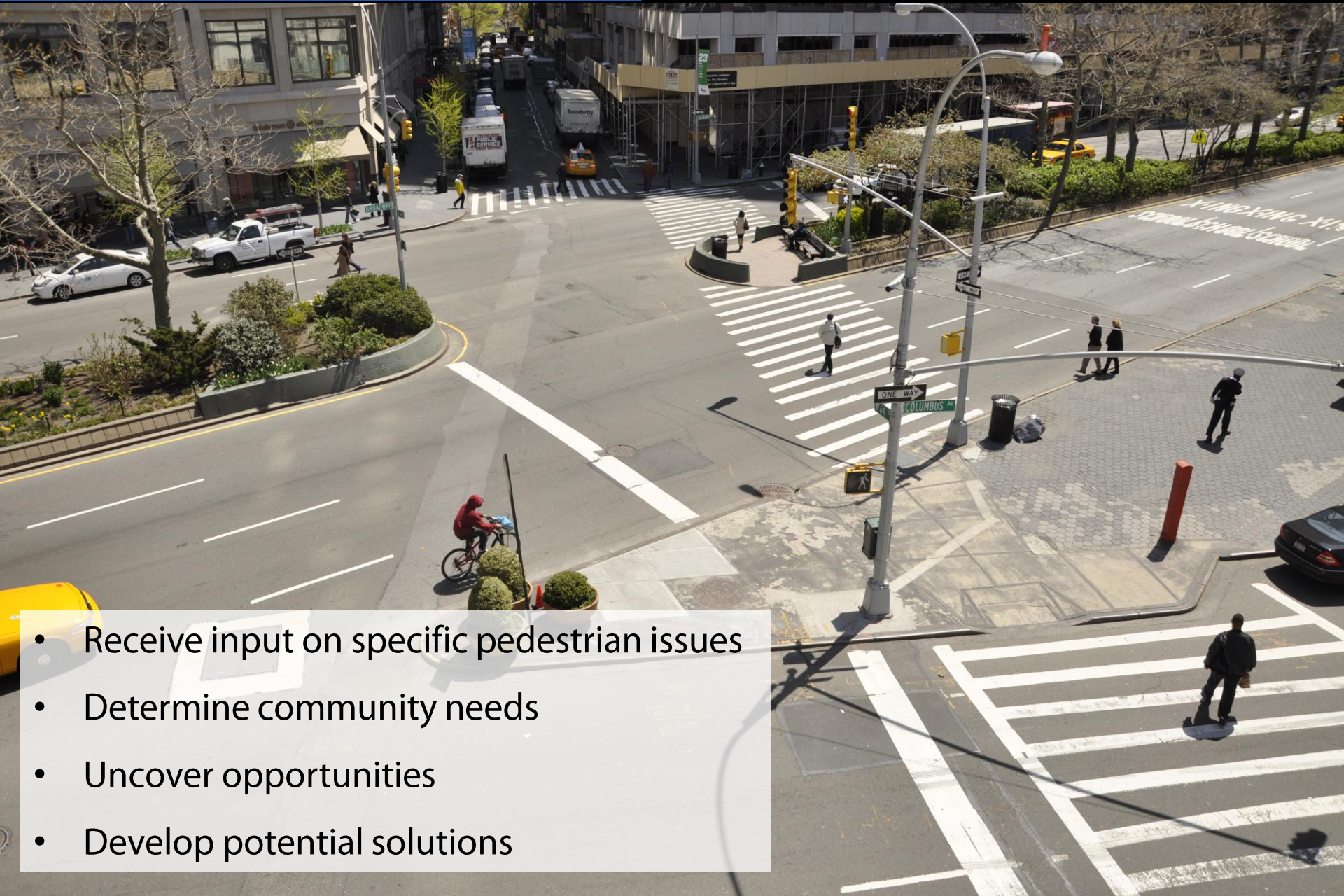
- Major, four-approach skewed intersection
- Multi-modal hub
- Thousands of pedestrians visit daily
 - Cultural institutions
 - Major commercial corridor
 - Large office buildings



Lincoln Center Bow Tie

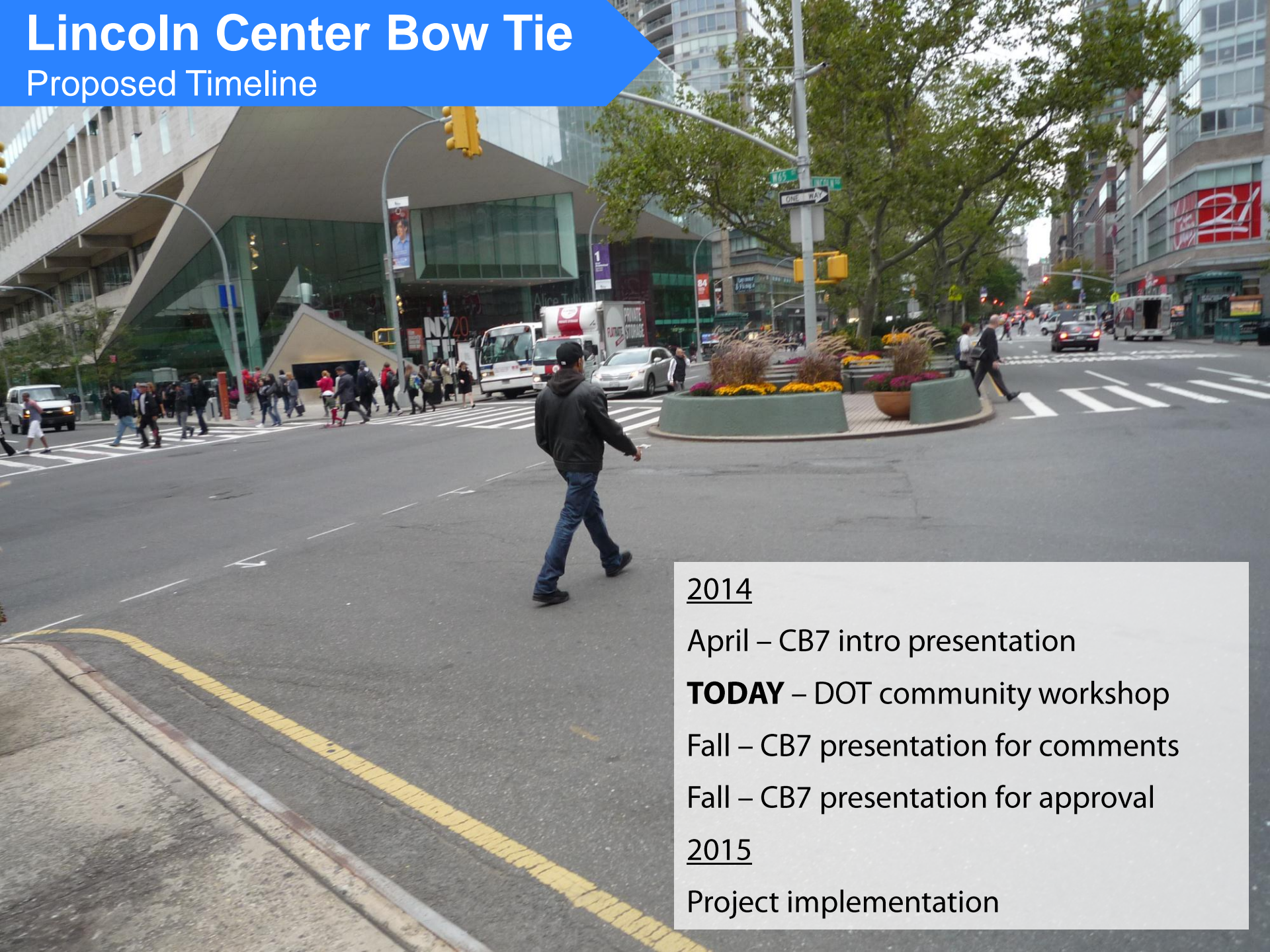
Workshop Goals

- Receive input on specific pedestrian issues
- Determine community needs
- Uncover opportunities
- Develop potential solutions



Lincoln Center Bow Tie

Proposed Timeline



2014

April – CB7 intro presentation

TODAY – DOT community workshop

Fall – CB7 presentation for comments

Fall – CB7 presentation for approval

2015

Project implementation

Lincoln Center Bow Tie

Data – Crash Data



39% of pedestrian crashes took place when pedestrians are crossing with signal.

35% of motor vehicle crashes involved sideswiping

Lincoln Square Area*
Injury Summary, 2008-2012 (5 years)

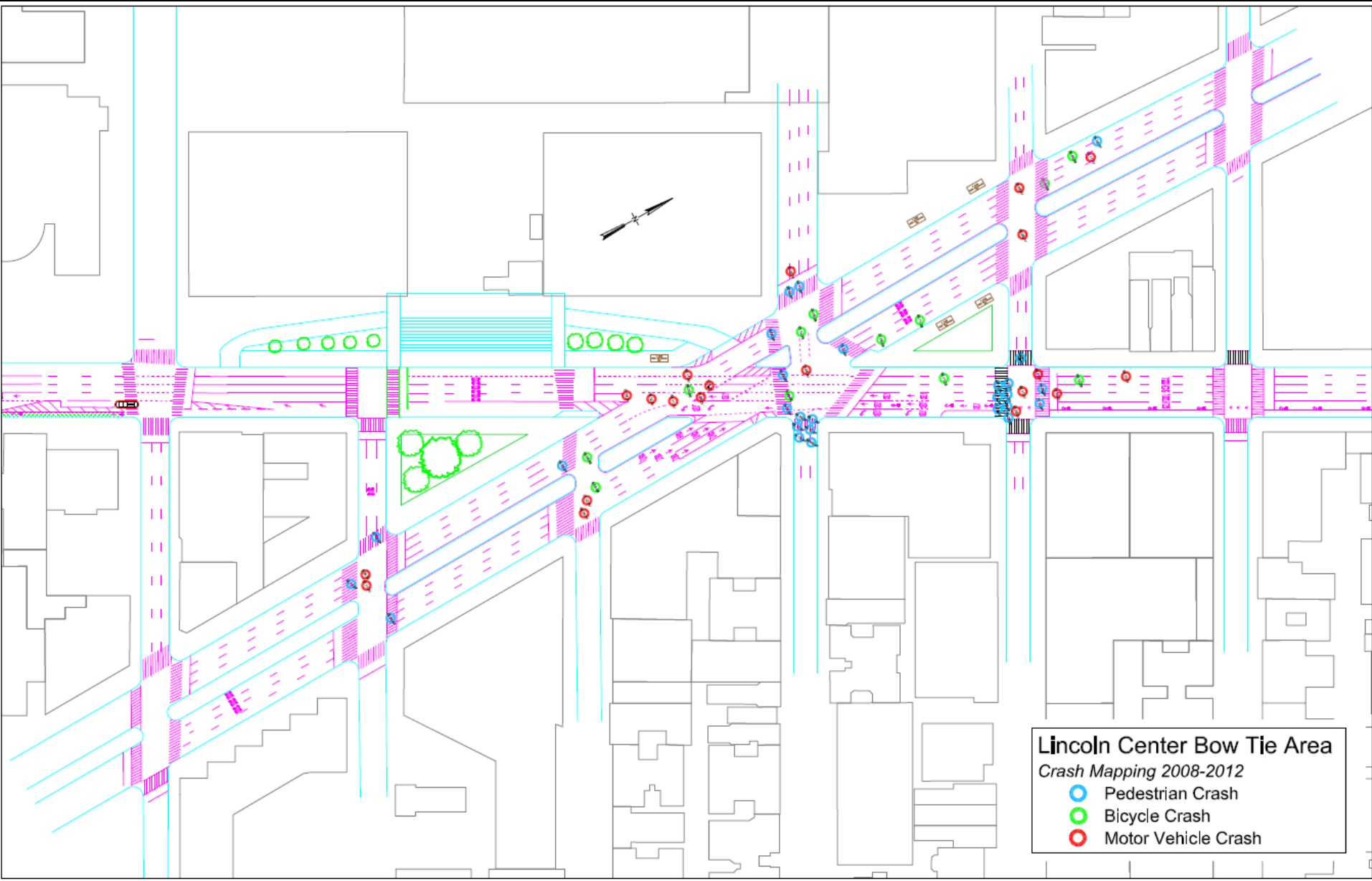
	Total Injuries	Severe Injuries
Pedestrian	46	2
Bicyclist	16	2
Motor Vehicle Occupant	61	6
Total	123	10

1 pedestrian fatality

*West 65th St to West 63rd St –
Broadway and Columbus Ave

Lincoln Center Bow Tie

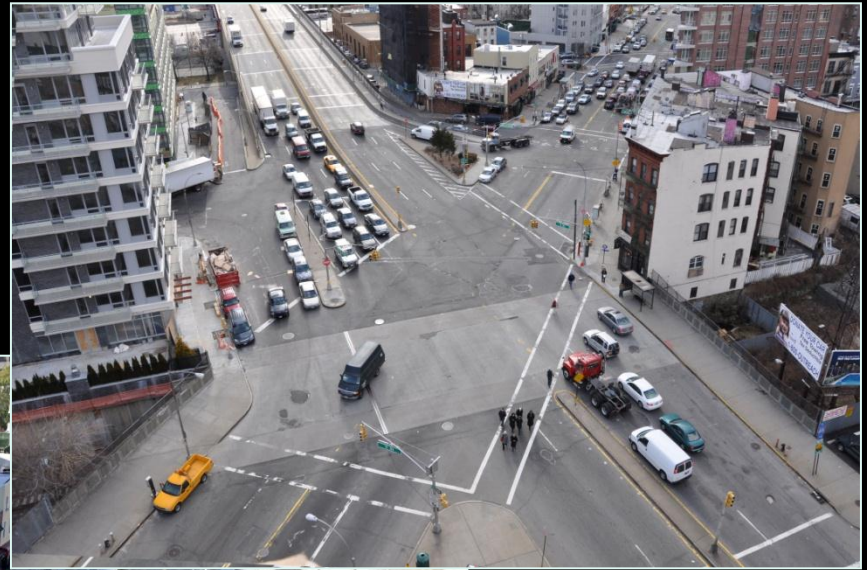
Data – Crash Data



Lincoln Center Bow Tie

Examples of DOT work

Crashes with injuries down 63%

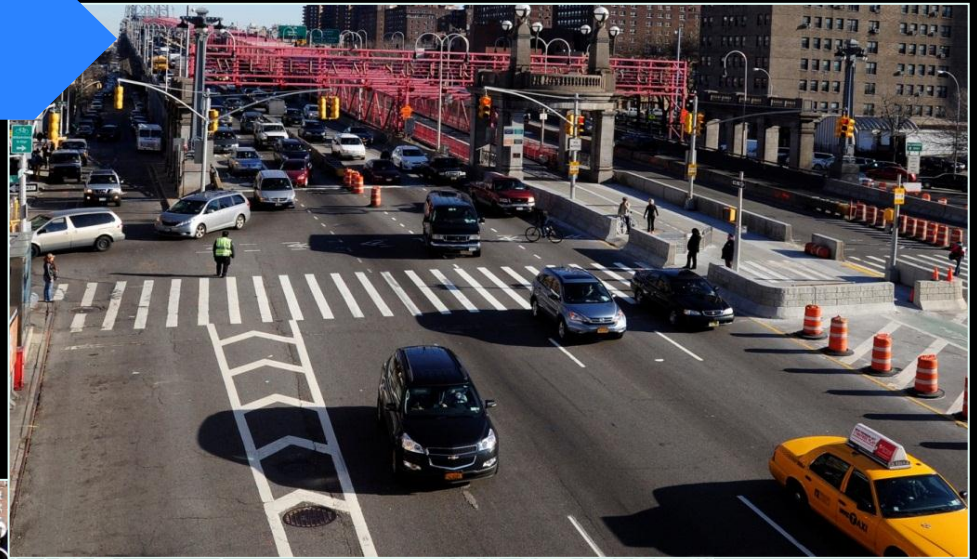


Total crashes down 15%

Jackson and Pulaski

Lincoln Center Bow Tie

Examples of DOT work



Total crashes
down by 27%

Delancey Street

Lincoln Center Bow Tie

Examples of DOT work

Pedestrian injuries
down by 39%



27% fewer injuries
for all users

Columbus Ave

Lincoln Center Bow Tie

Examples of DOT work

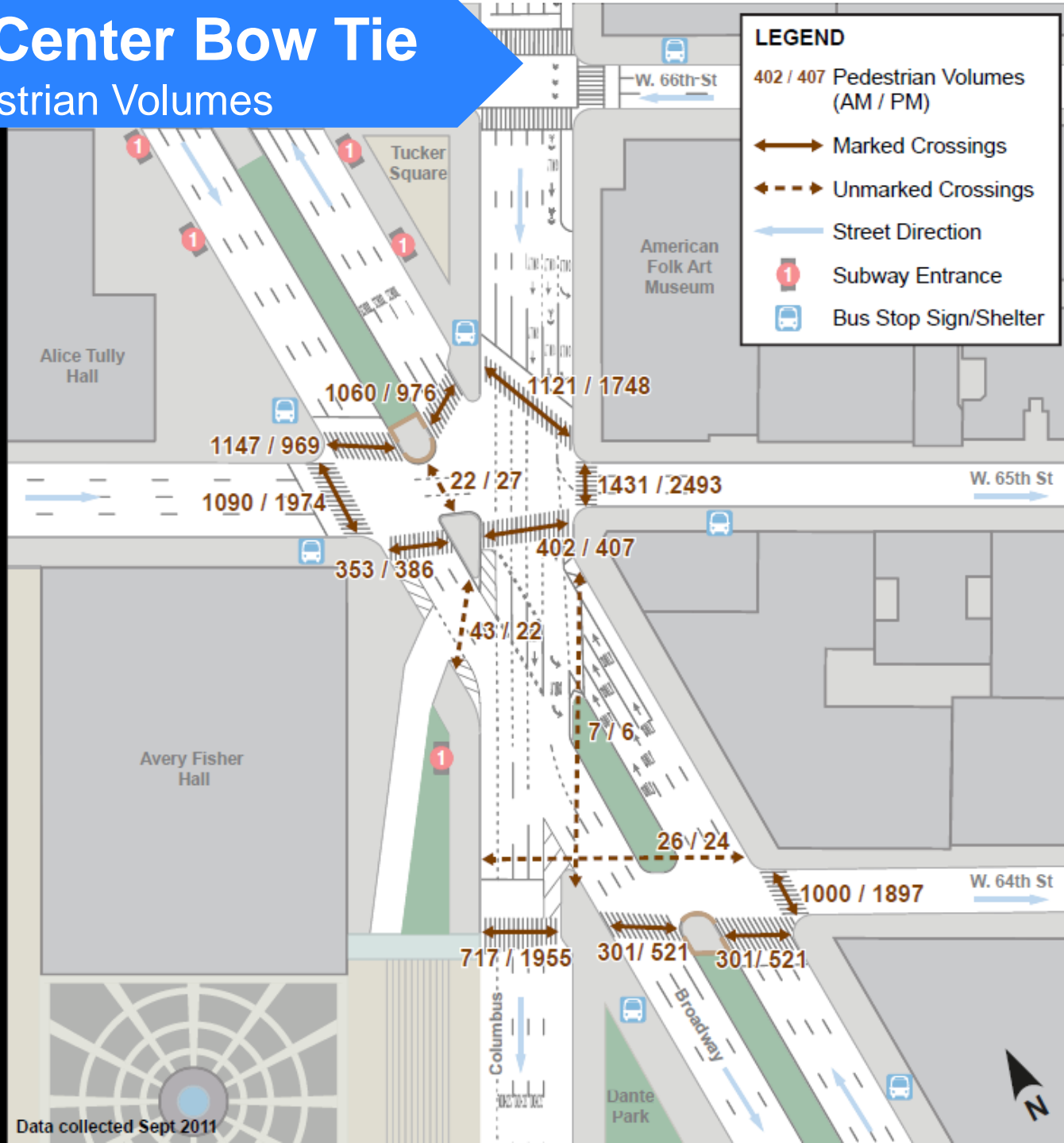


Pedestrian injuries
down 25%

71st and Broadway

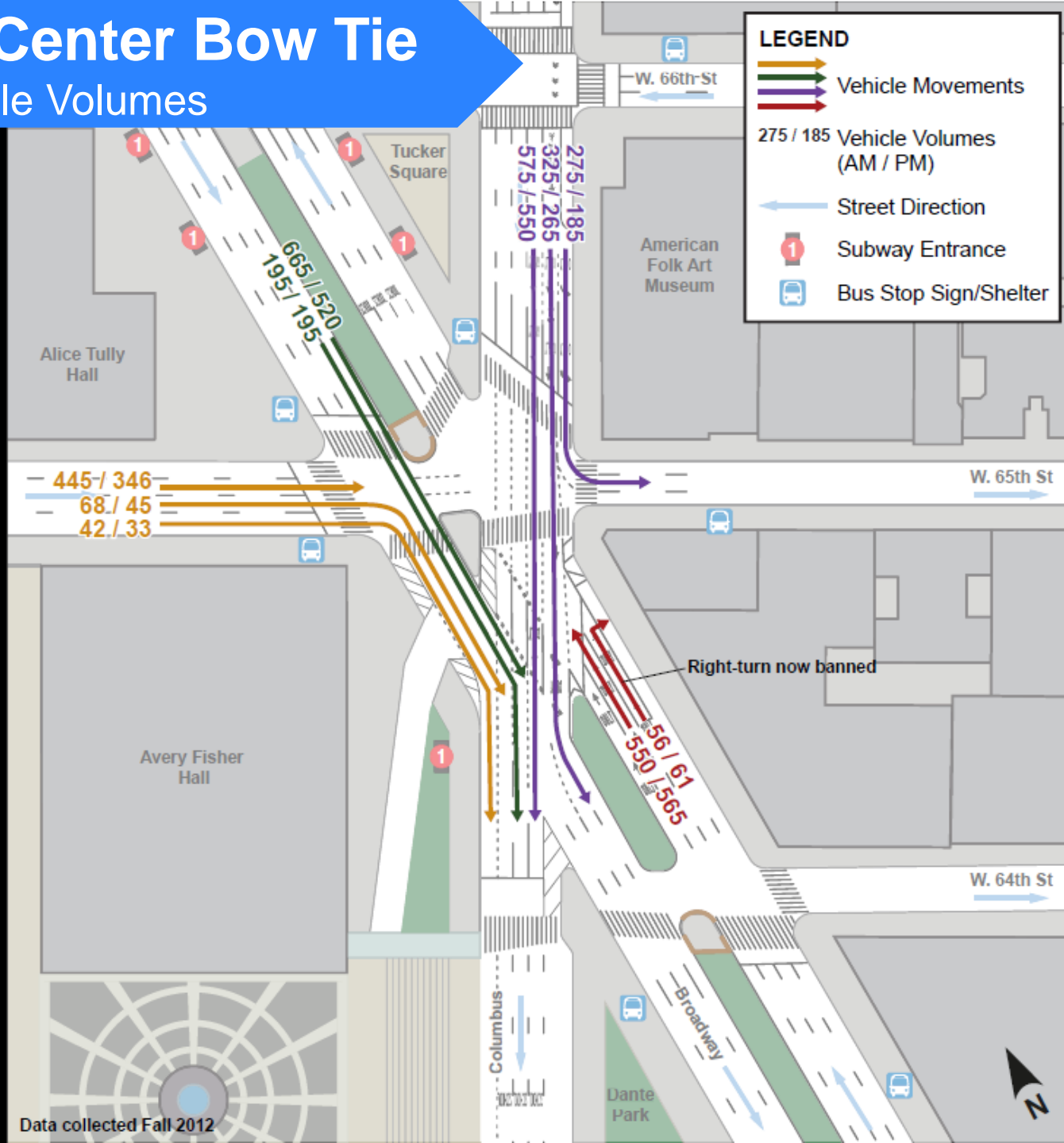
Lincoln Center Bow Tie

Data – Pedestrian Volumes



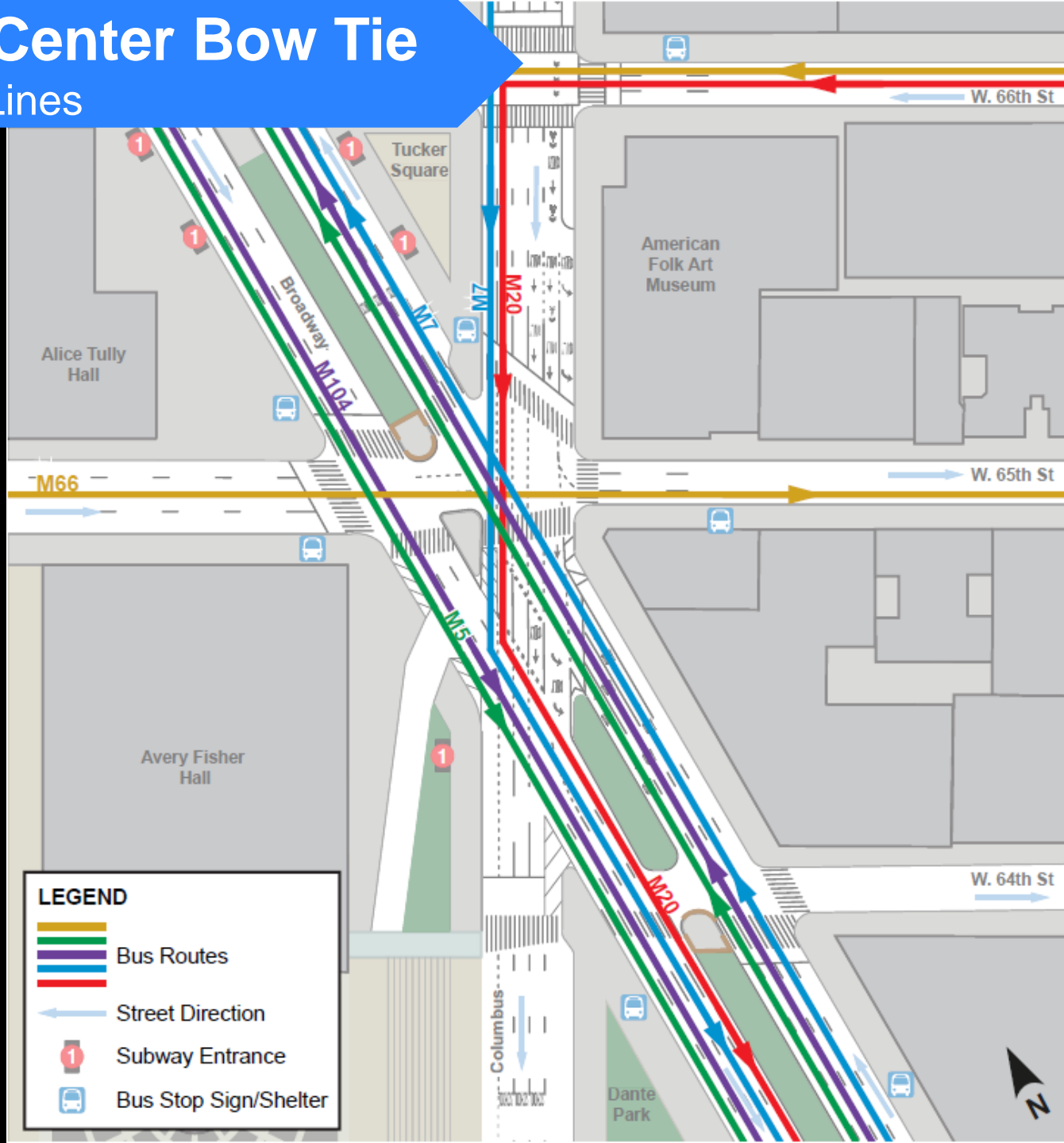
Lincoln Center Bow Tie

Data – Vehicle Volumes



Lincoln Center Bow Tie

Data – Bus Lines

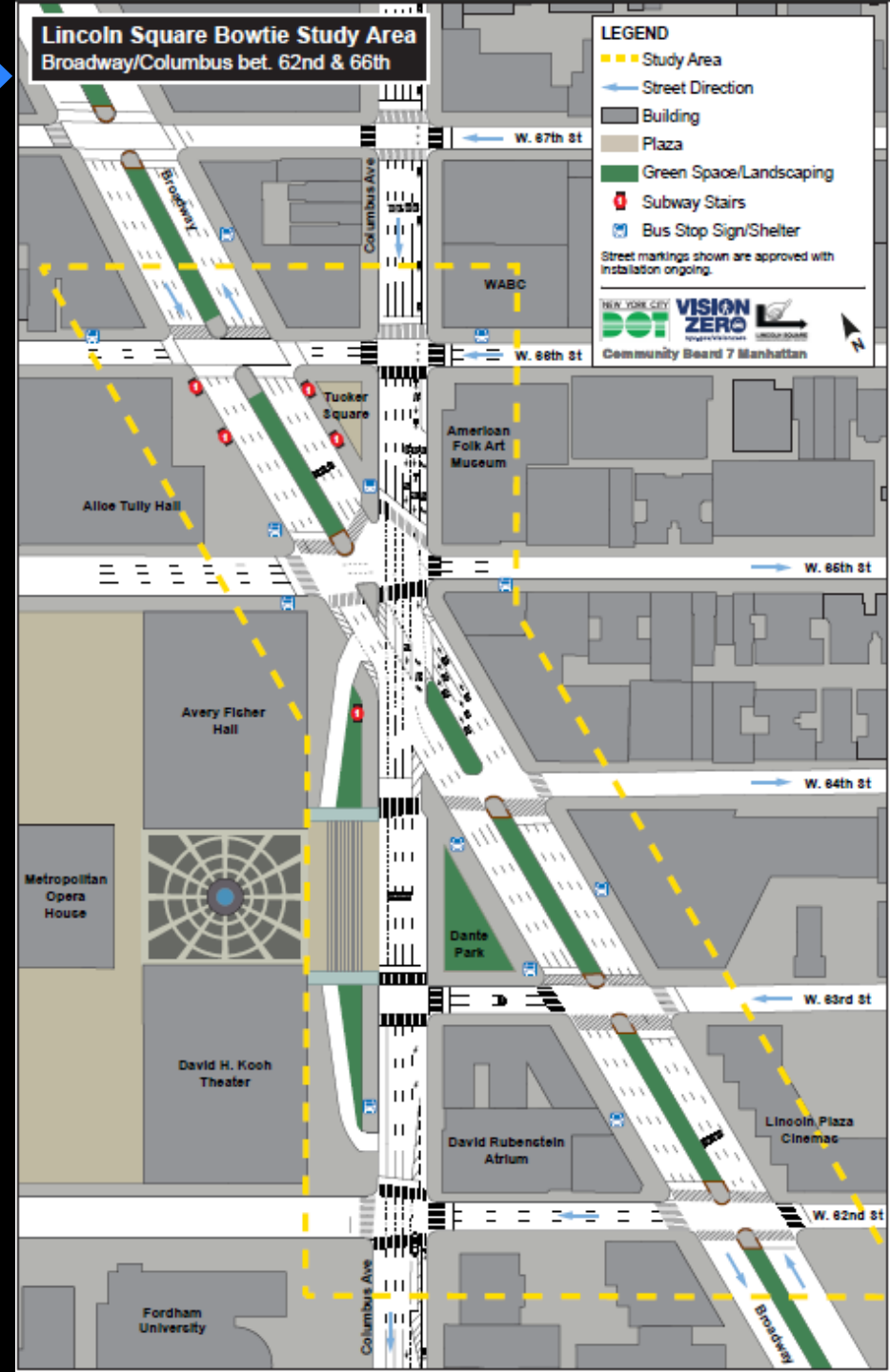


Lincoln Center Bow Tie

Map Exercise

- DOT staff introduction
- Map orientation
- Discussion questions
- Tell us:
 - Problems
 - Opportunities
 - Potential solutions
- Please - write on the map!
- DOT staff will take notes on easels
- Data slides will cycle through on screen

7:45 Groups Report Back!





www.nyc.gov/dot

Thank
You