

Astoria Blvd, 33rd to 31st Streets

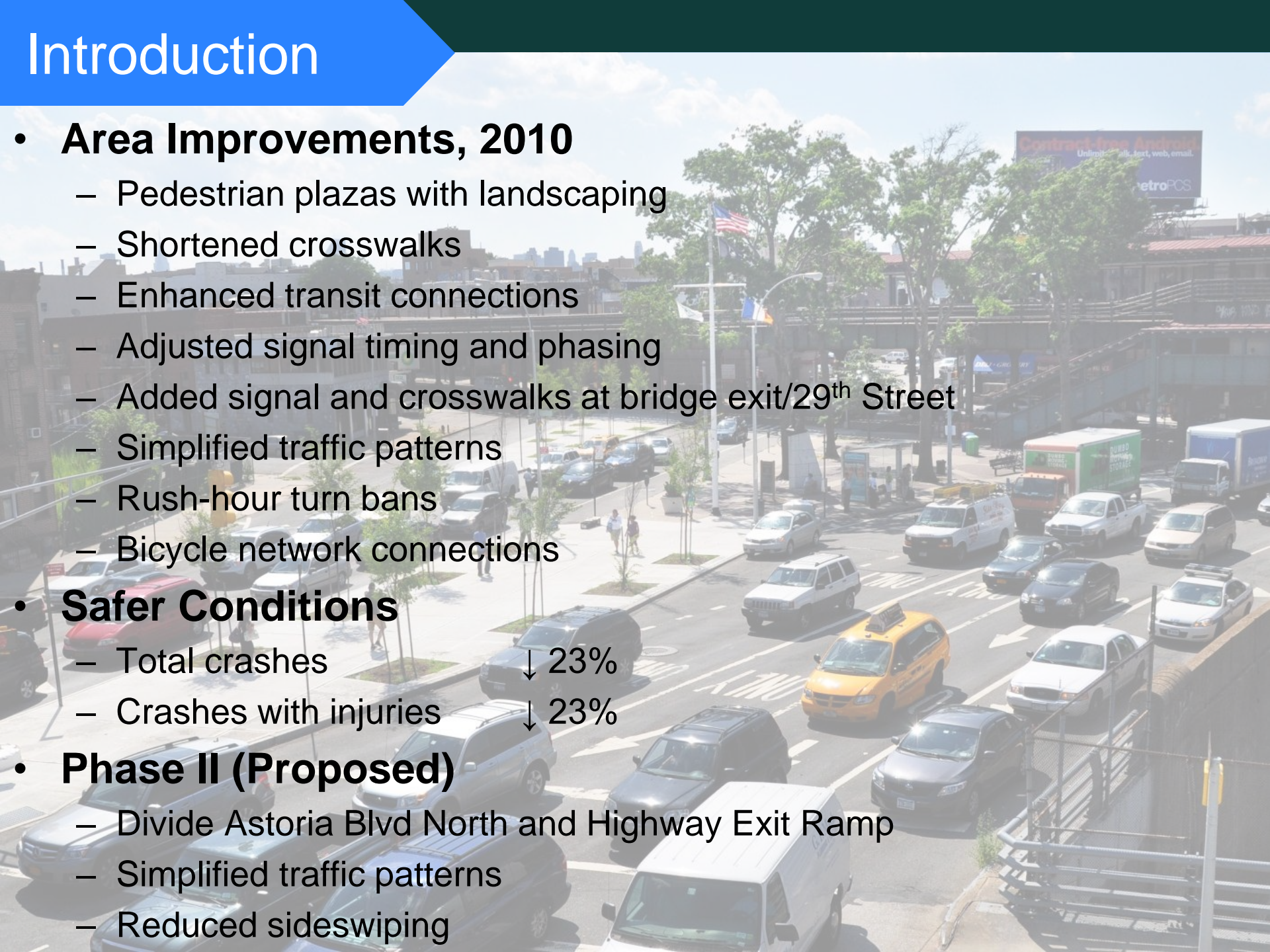


Area Map

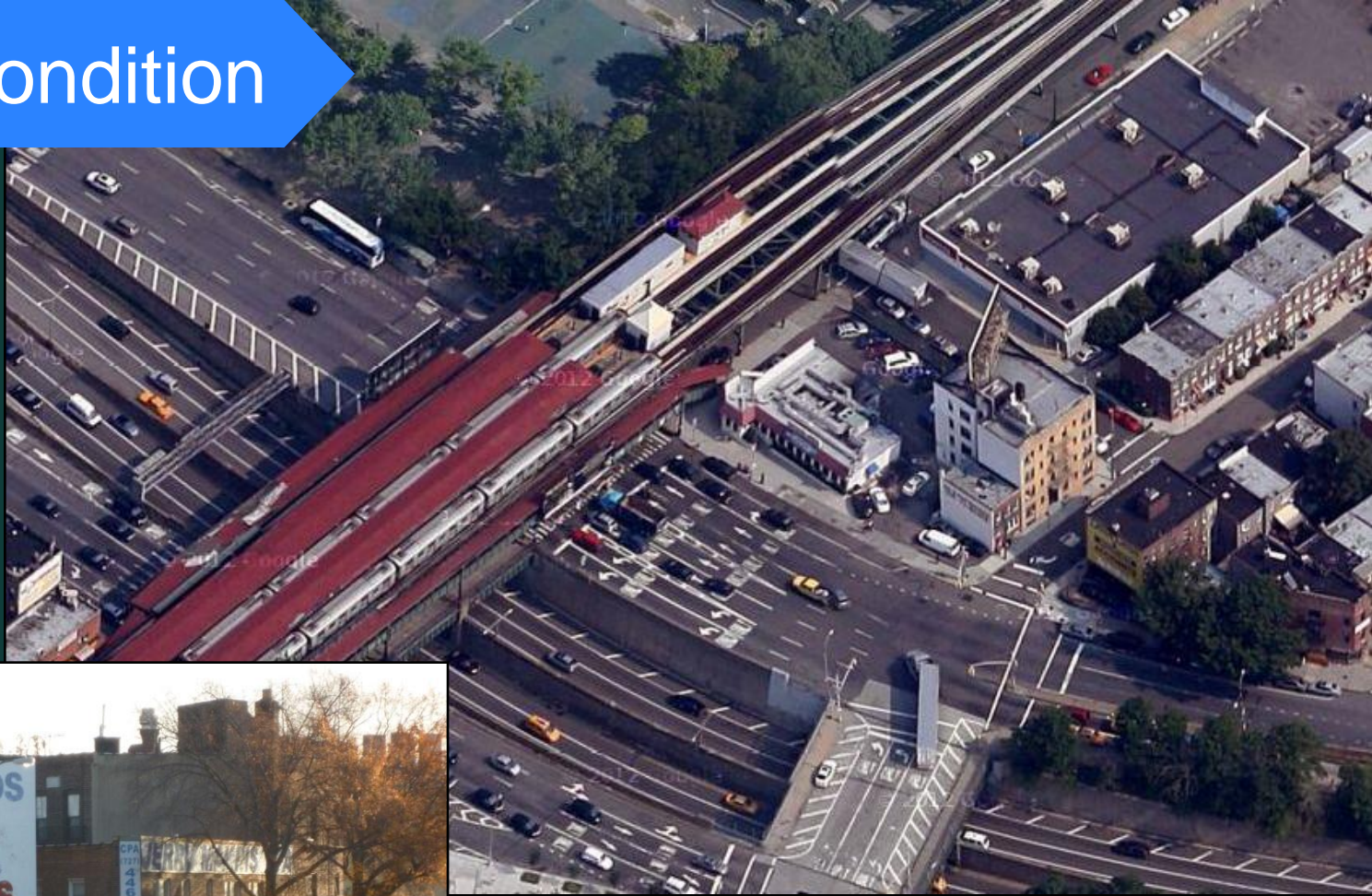


Introduction

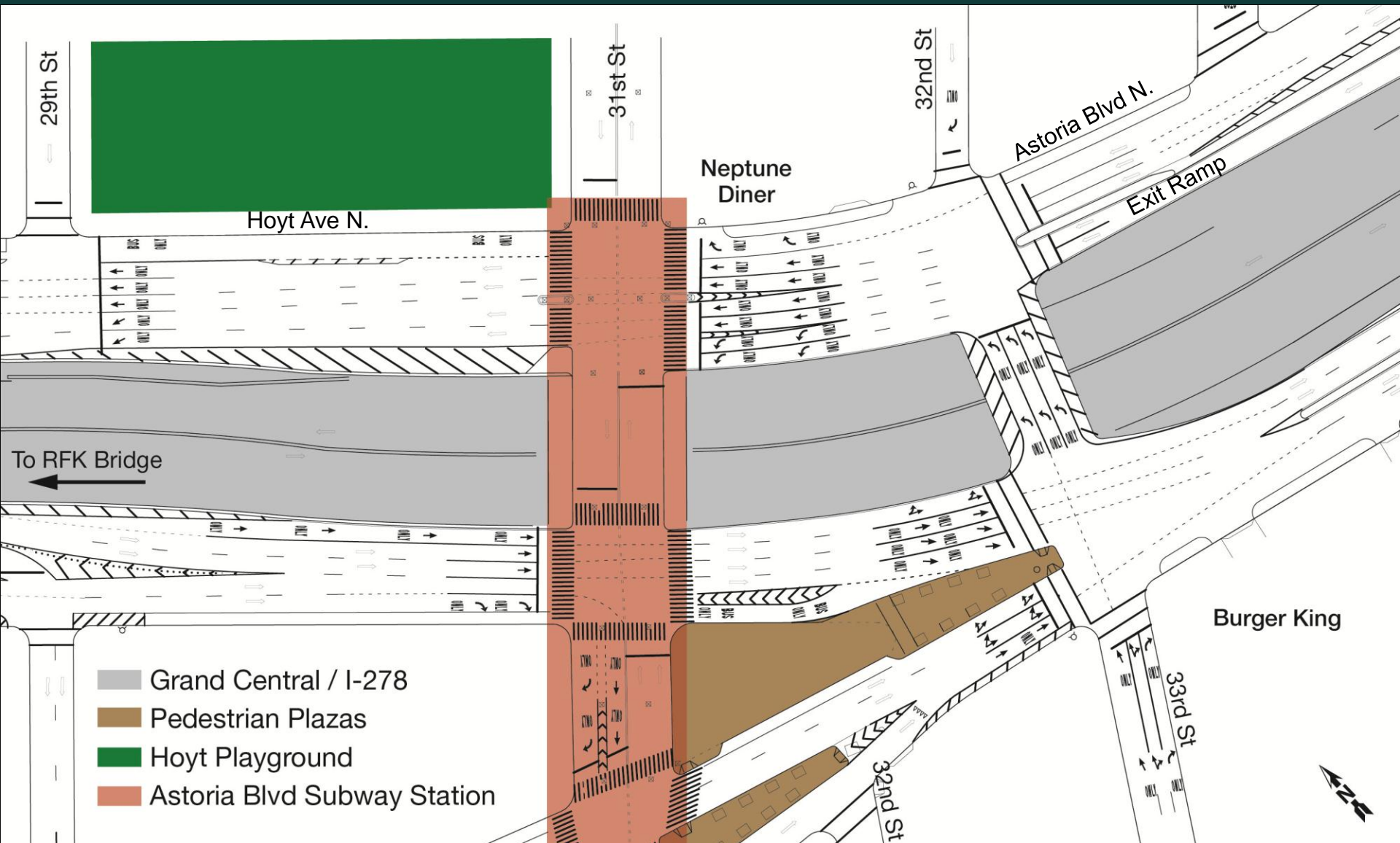
- **Area Improvements, 2010**
 - Pedestrian plazas with landscaping
 - Shortened crosswalks
 - Enhanced transit connections
 - Adjusted signal timing and phasing
 - Added signal and crosswalks at bridge exit/29th Street
 - Simplified traffic patterns
 - Rush-hour turn bans
 - Bicycle network connections
- **Safer Conditions**
 - Total crashes ↓ 23%
 - Crashes with injuries ↓ 23%
- **Phase II (Proposed)**
 - Divide Astoria Blvd North and Highway Exit Ramp
 - Simplified traffic patterns
 - Reduced sideswiping



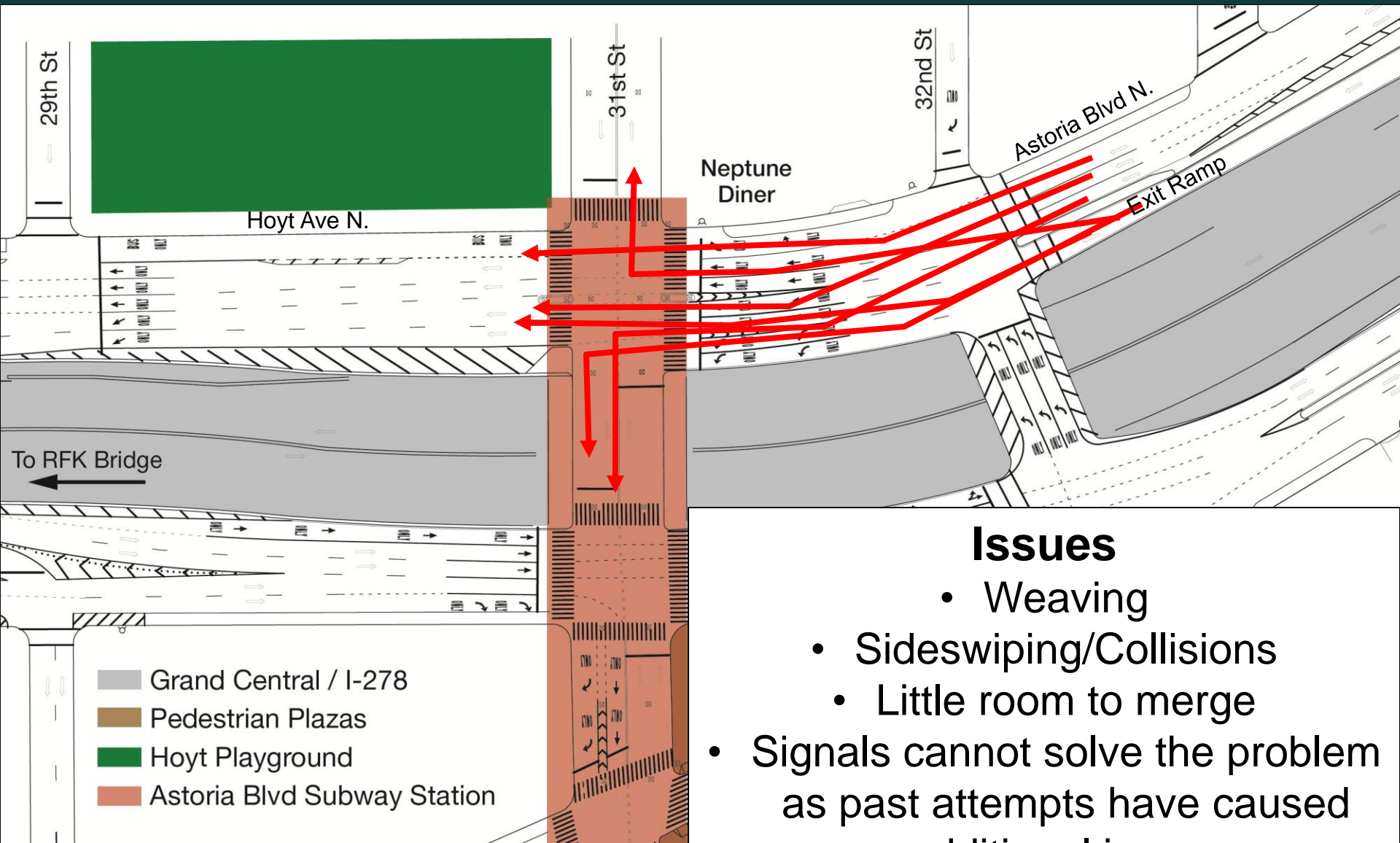
Existing Condition



Existing Condition



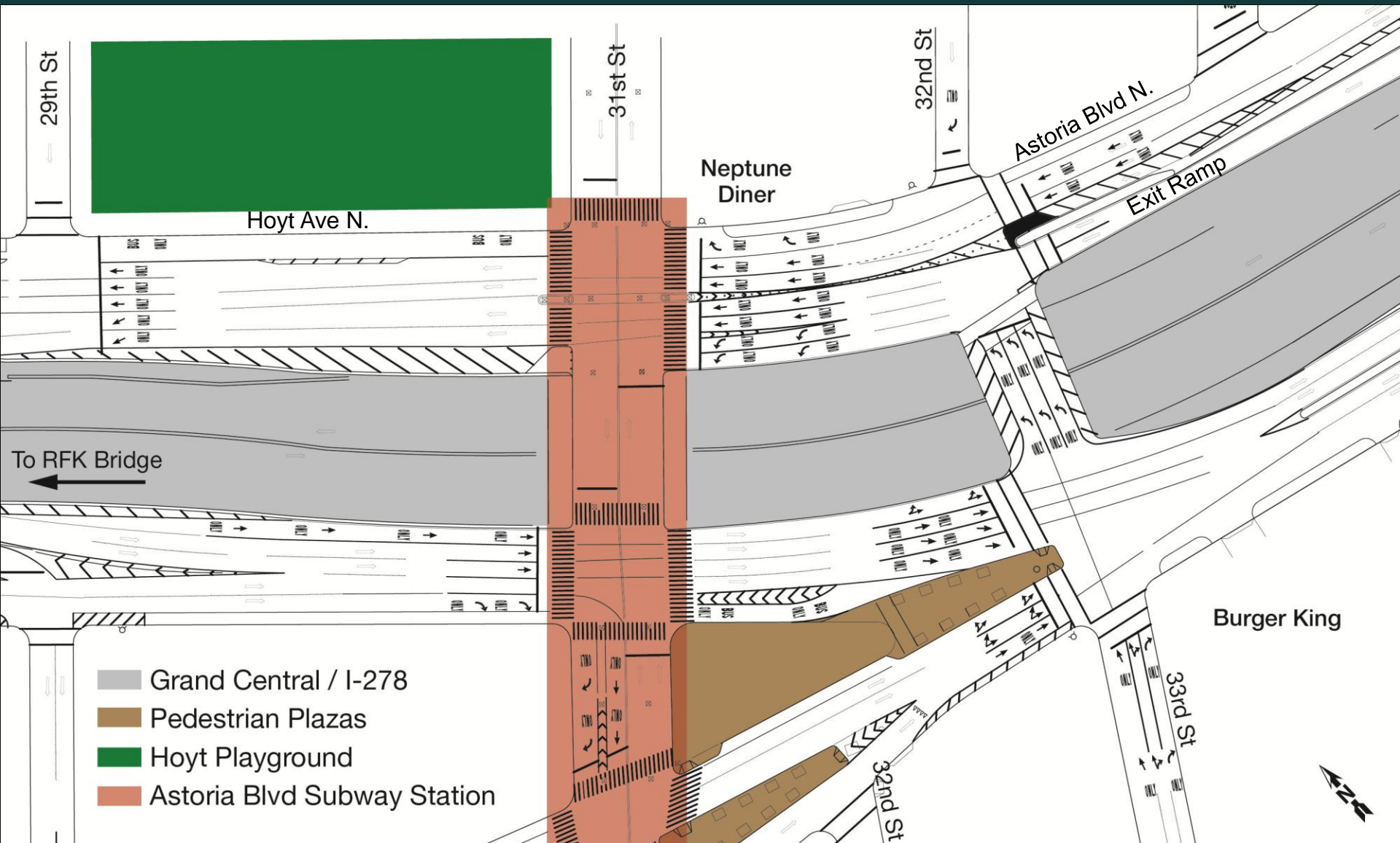
Existing Condition



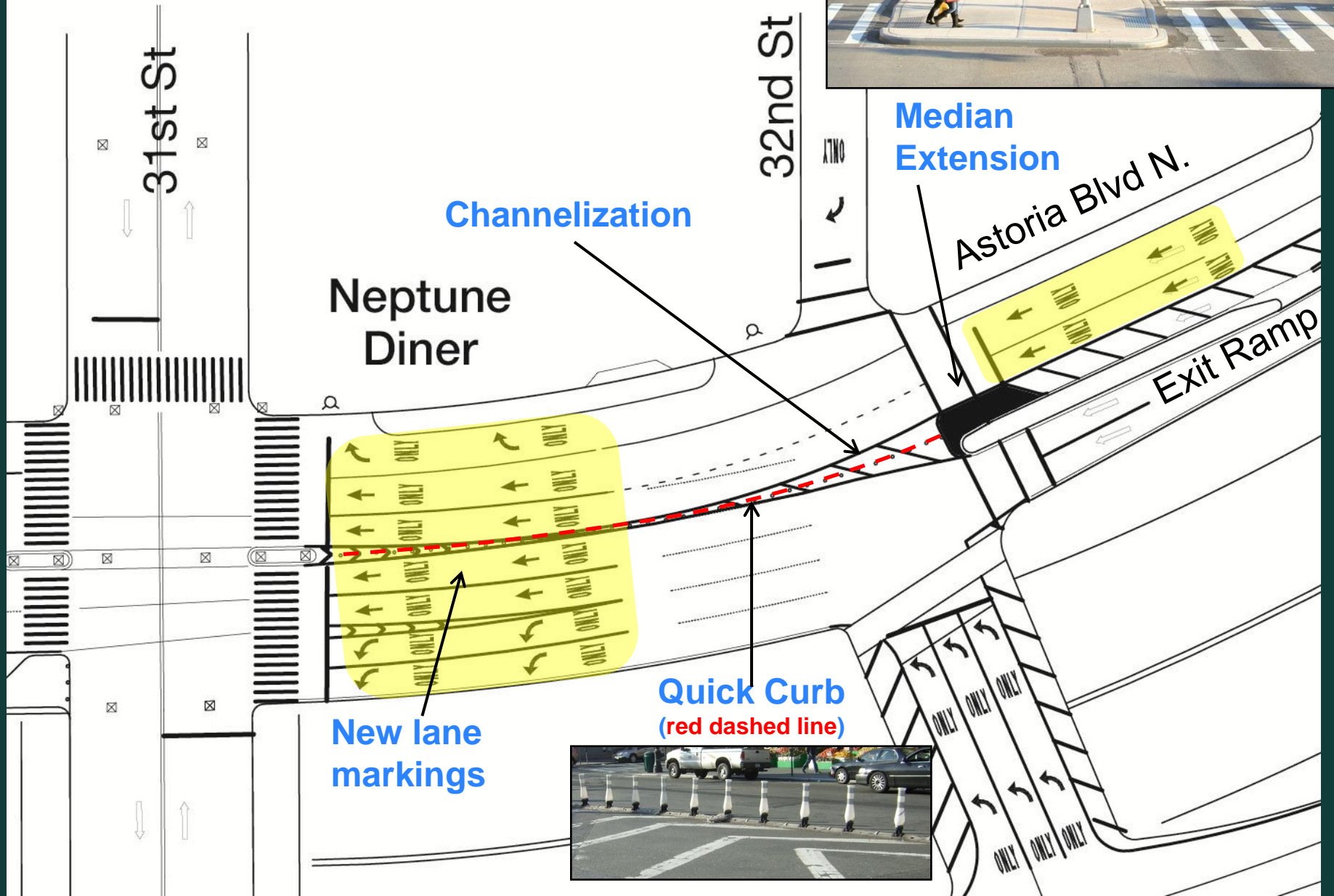
Issues

- Weaving
- Sideswiping/Collisions
- Little room to merge
- Signals cannot solve the problem as past attempts have caused additional issues

Proposal



Proposal Detail



Proposal Rendering

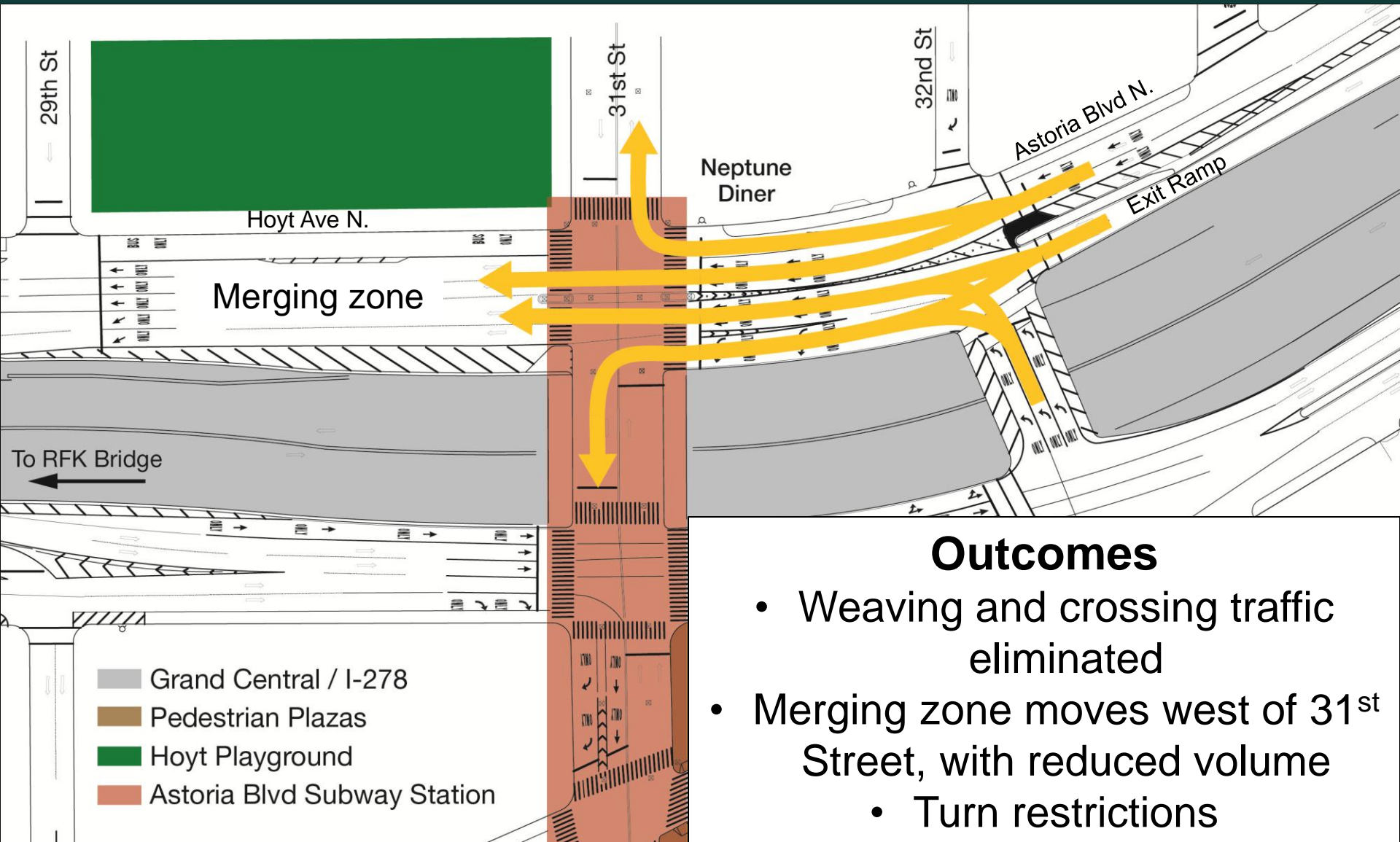


Existing



Proposed

Proposal – Permitted Movements



Outcomes

- Weaving and crossing traffic eliminated
- Merging zone moves west of 31st Street, with reduced volume
 - Turn restrictions

Thank
You

