

# Morningside Avenue

2013





# Project Extent

## LEGEND



PROJECT EXTENT



PARK ENTRANCE

### Morningside Avenue - W 116th St to W 126th St, MN

#### Injury Summary, 2007-2011 (5 Years)

	Total Injuries	Severe Injuries	Fatalities	KSI
Pedestrian	27	4	0	4
Bicyclist	9	1	0	1
Motor Vehicle Occupant	66	4	0	4
Total	102	9	0	9

Fatalities, 01/01/2007-7/1/2013 : None

Source: Fatalities: NYCDOT  
Injuries: NYSDOT  
KSI: Persons Killed or  
Severely Injured





# Morningside Ave Corridor

## Existing Conditions



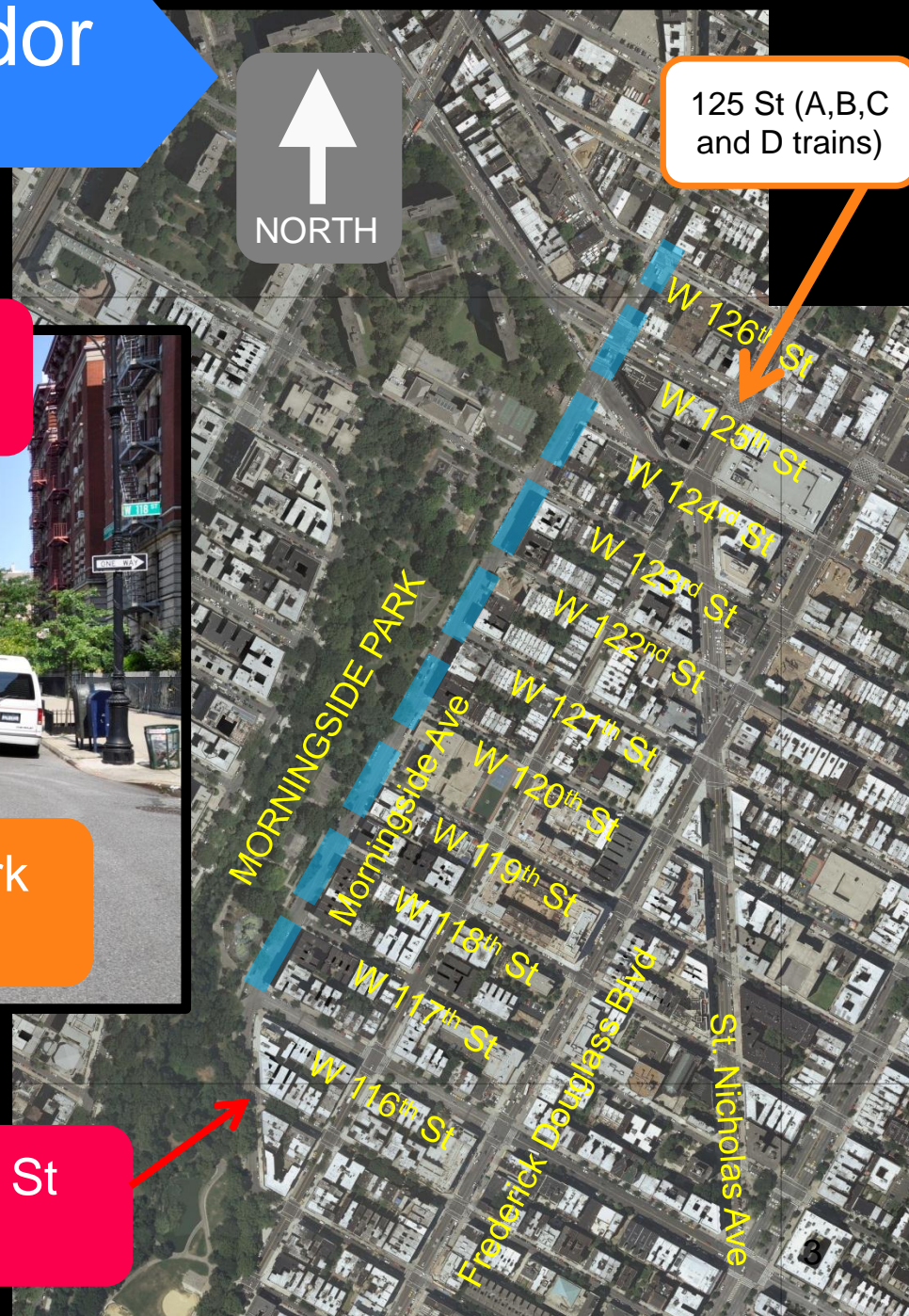
125 St (A,B,C  
and D trains)

60' roadway with low traffic  
volumes = excess capacity



Morningside Ave separates park  
from community to the east

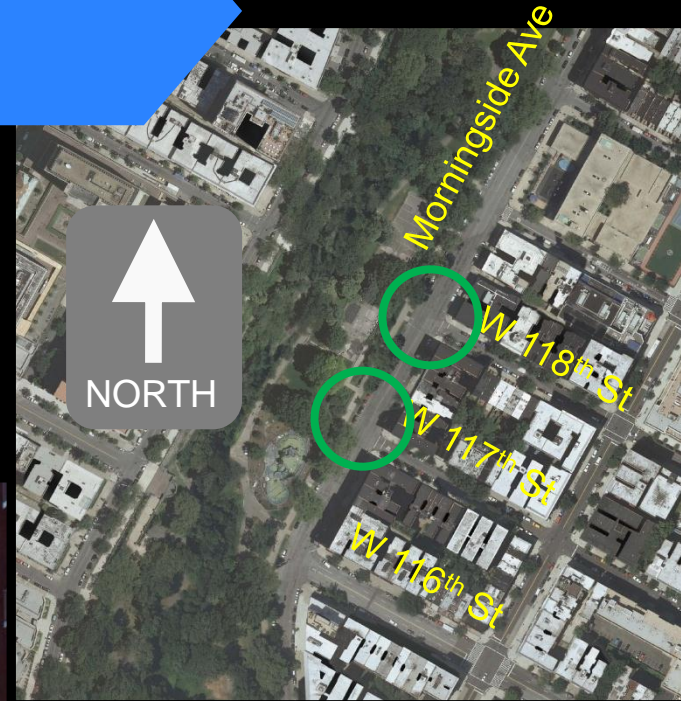
Morningside Ave south of W 116<sup>th</sup> St  
narrows to 42' wide





# Morningside Ave and W 118<sup>th</sup> St

## Existing Conditions



Park Entrance

60 feet

View North





# Morningside Ave and W 120<sup>th</sup> St

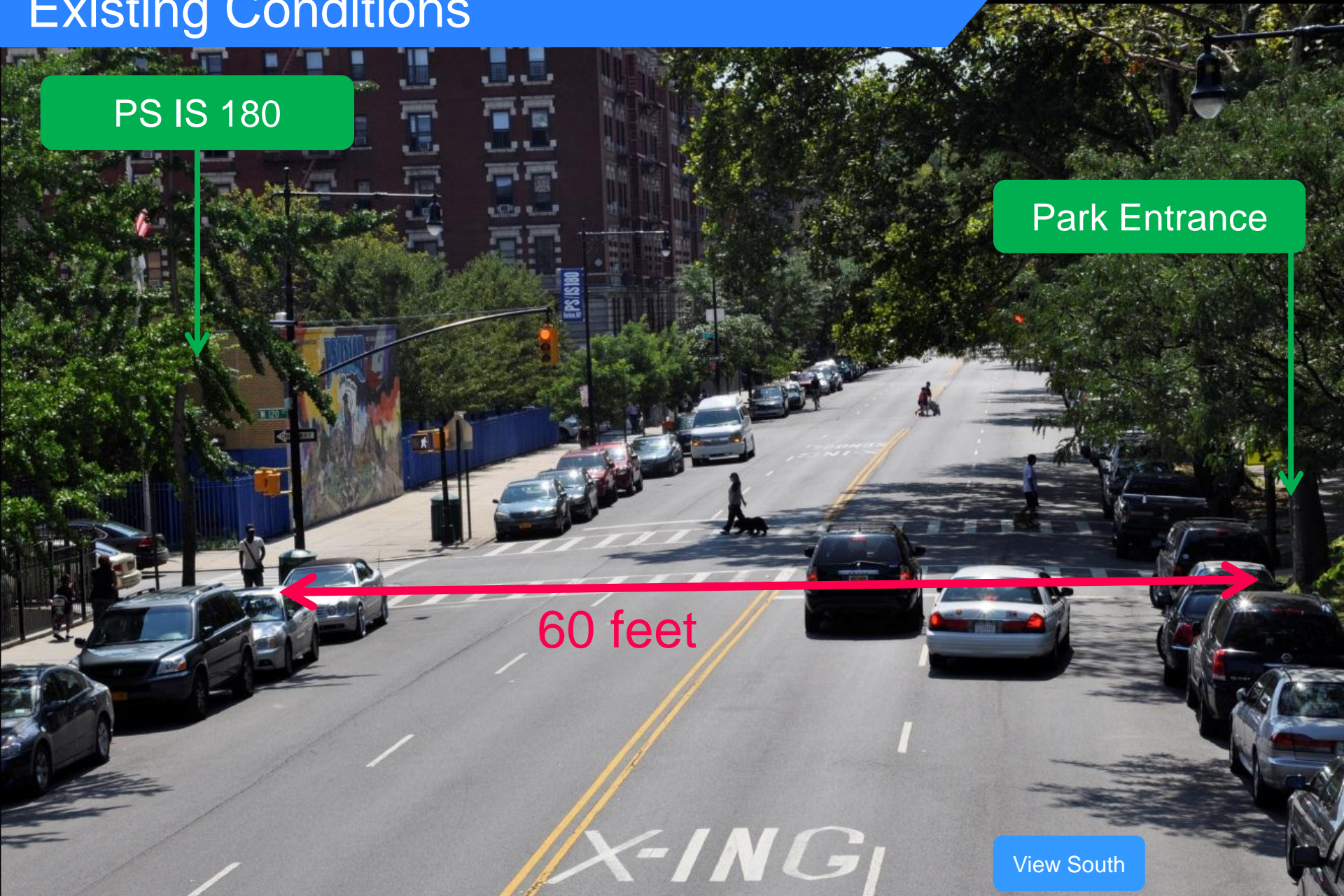
## Existing Conditions

PS IS 180

Park Entrance

60 feet

View South



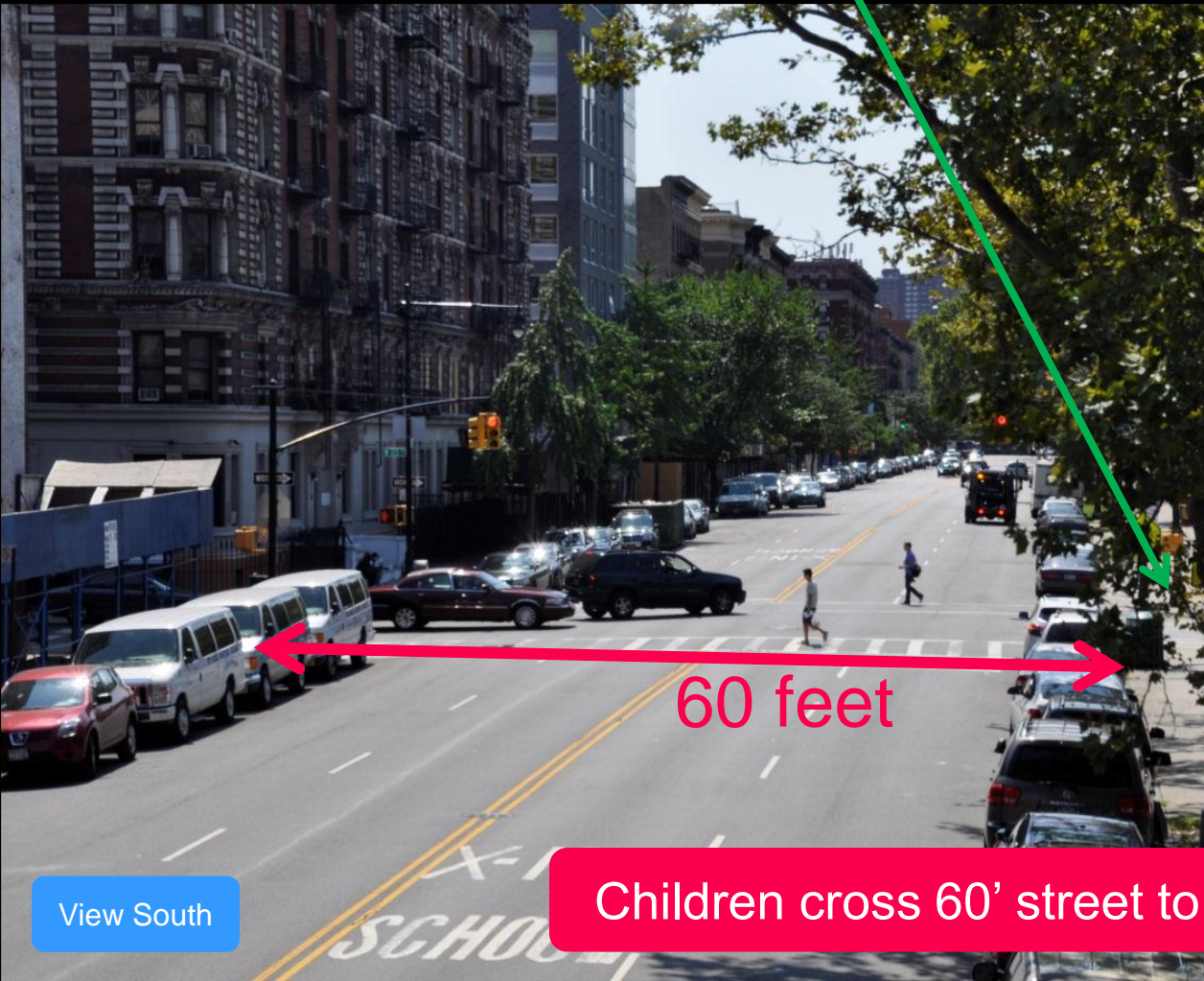


# Morningside Ave and W 123<sup>rd</sup> St

## Existing Conditions

Park Entrance

PS 125



View South

Children cross 60' street to reach park and PS 125



# Morningside Ave

## Existing Corridor Conditions

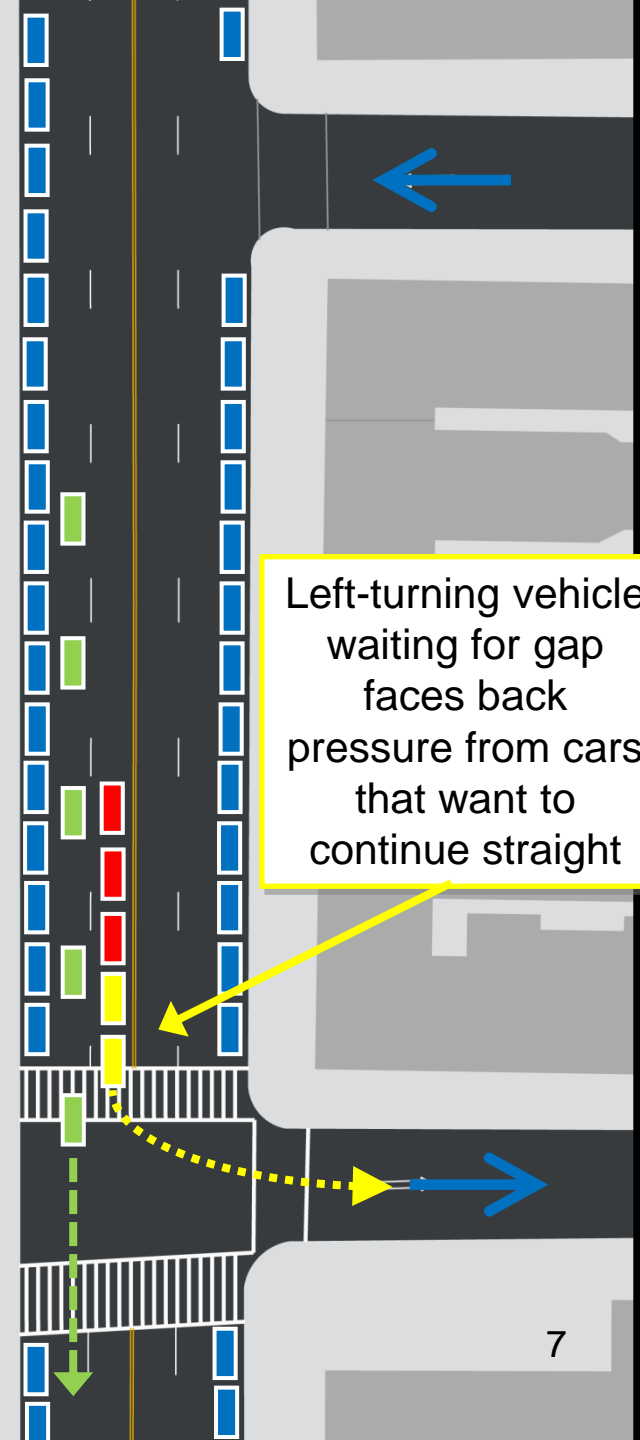
Volumes  
385 AM/325 PM  
10 vehicles per signal cycle

### Legend

Parked vehicle  
Moving thru vehicle  
Left turning vehicle  
Stopped blocked vehicle



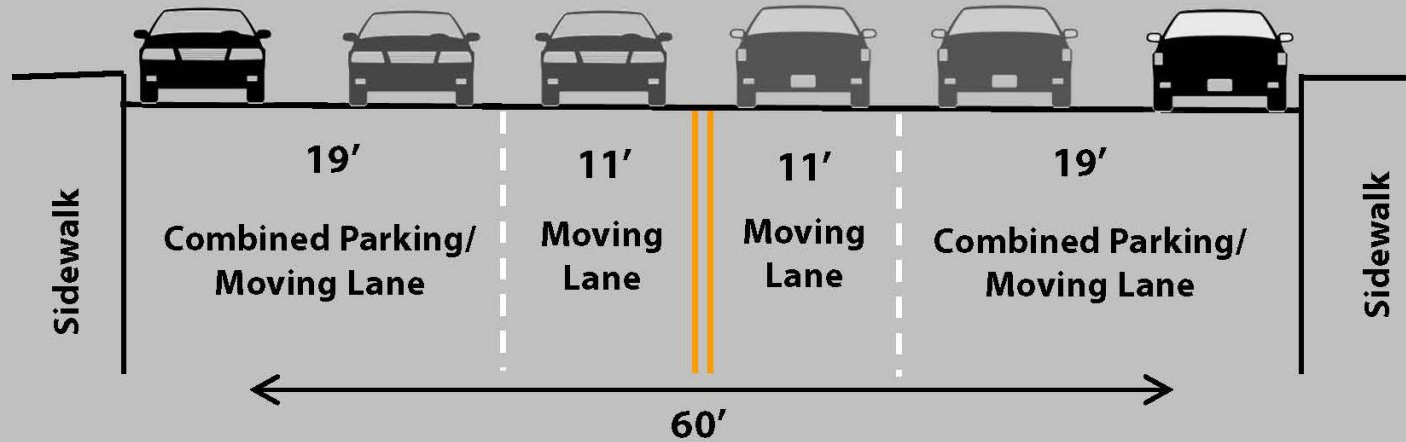
Left-turning vehicle  
waiting for gap  
faces back  
pressure from cars  
that want to  
continue straight



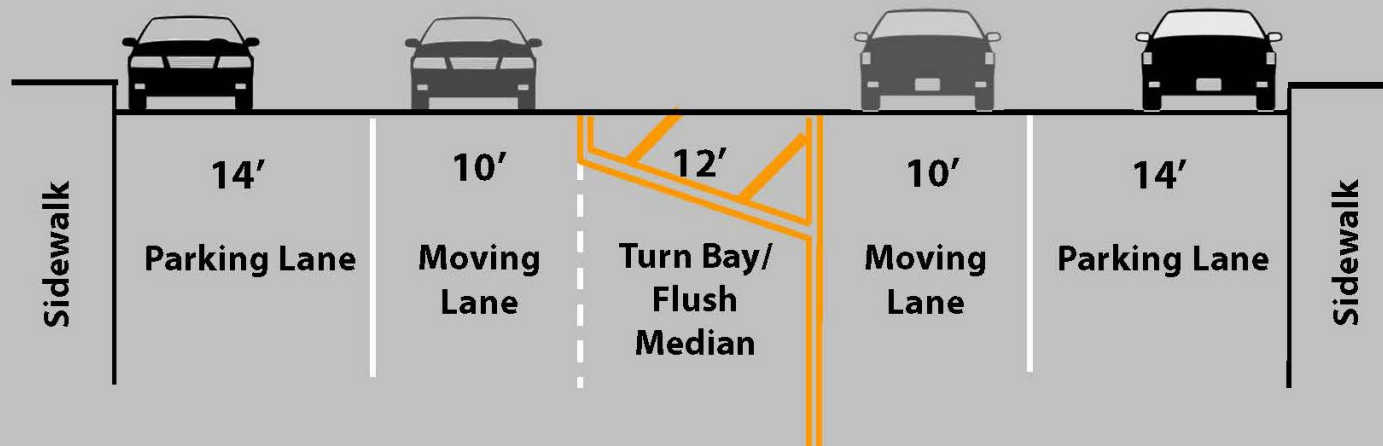


# Morningside Avenue Profile

## EXISTING



## PROPOSED





# Proposed Corridor Conditions

Better organization  
and lane assignments  
allow for same volume  
with safety  
improvements

Thru traffic has a clear uninterrupted path

Left-turning  
vehicle has  
space to wait  
for gap



PARK ENTRANCE



# Morningside Avenue

## Example of Road Striping

Pedestrian  
refuge island

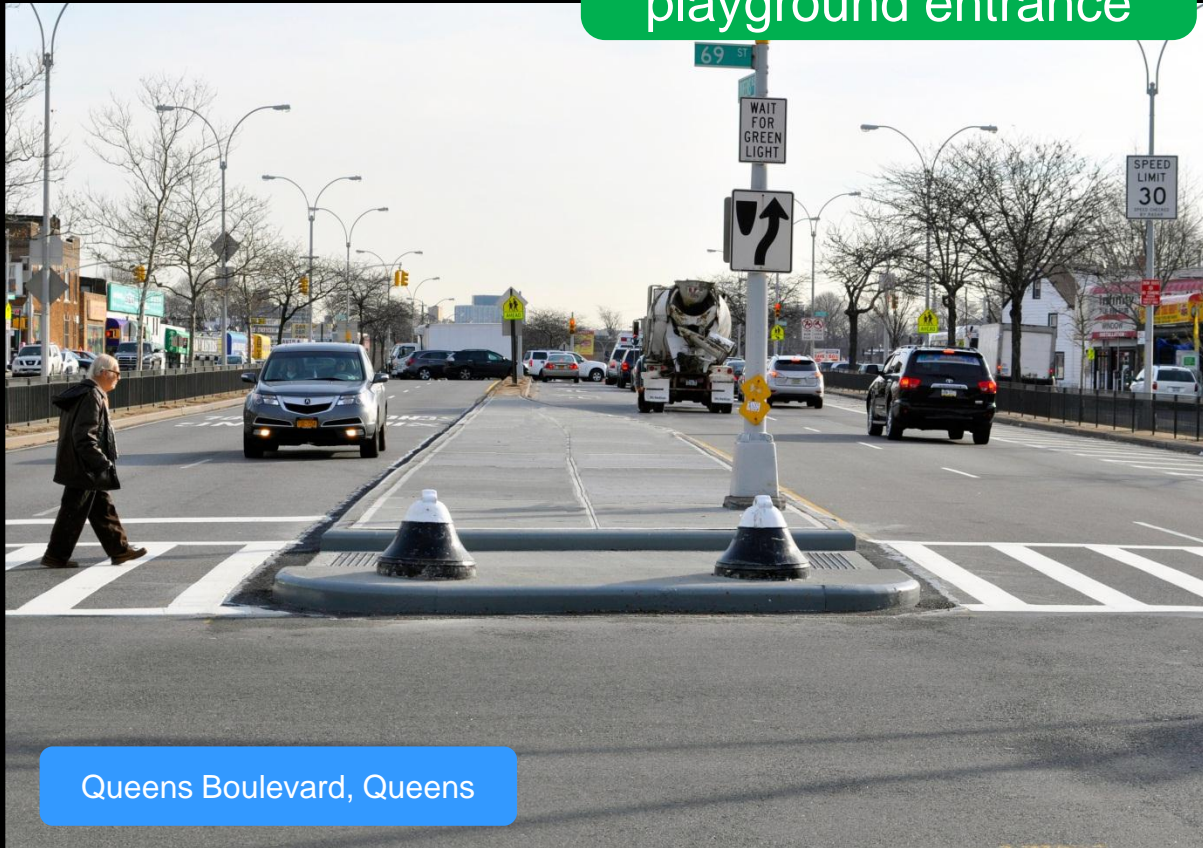
One lane in  
each direction

Wide parking lanes

Macombs Rd, BRONX



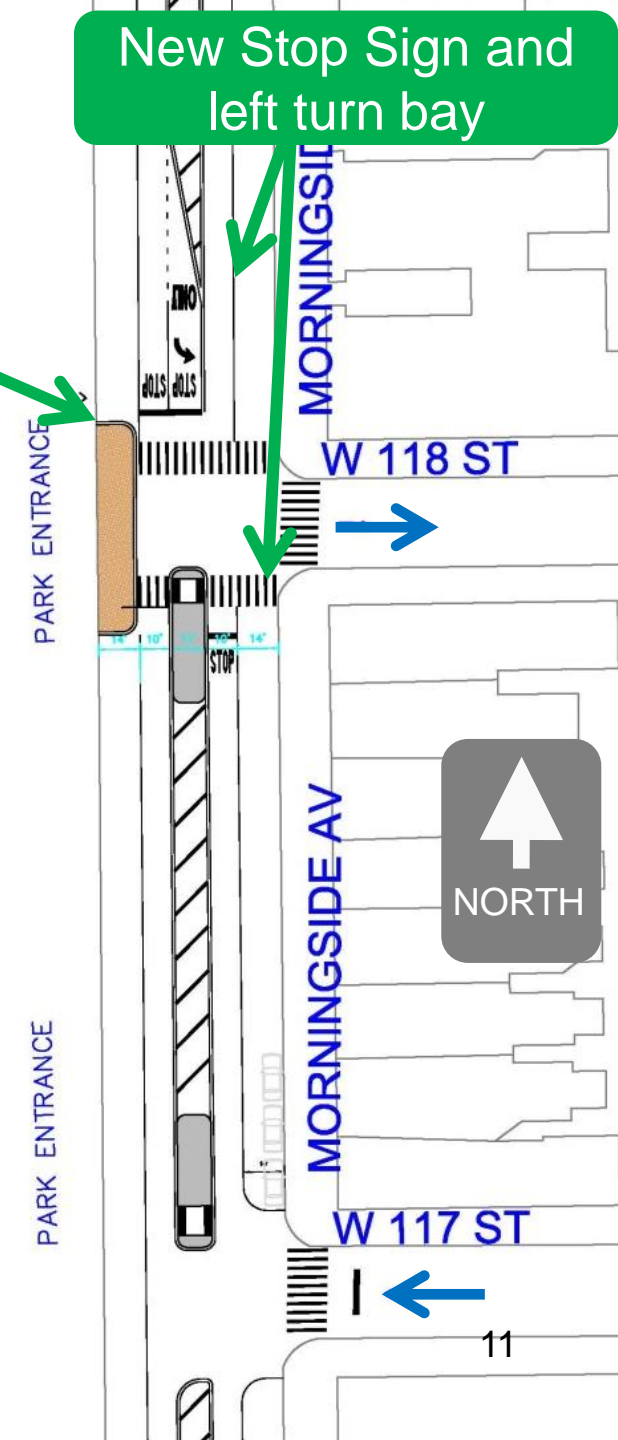
# W 117<sup>th</sup> and W118<sup>th</sup> Streets Proposal



Queens Boulevard, Queens

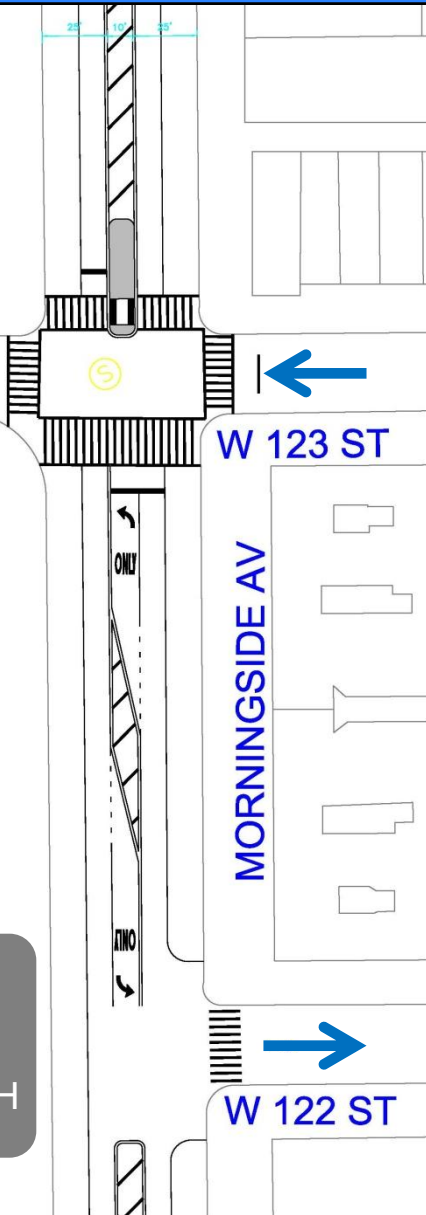
Paint curb extension at playground entrance

Safer two part crossing





# W 120<sup>th</sup> and W 123<sup>rd</sup> Streets Proposal



Paint curb extension in front of park entrance

New left turn bay

Safer two part crossing

Wide parking lanes

PARK ENTRANCE

14' 10' 10' 14'

MORNINGSIDE AV

W 120 ST

MORNINGSIDE AV





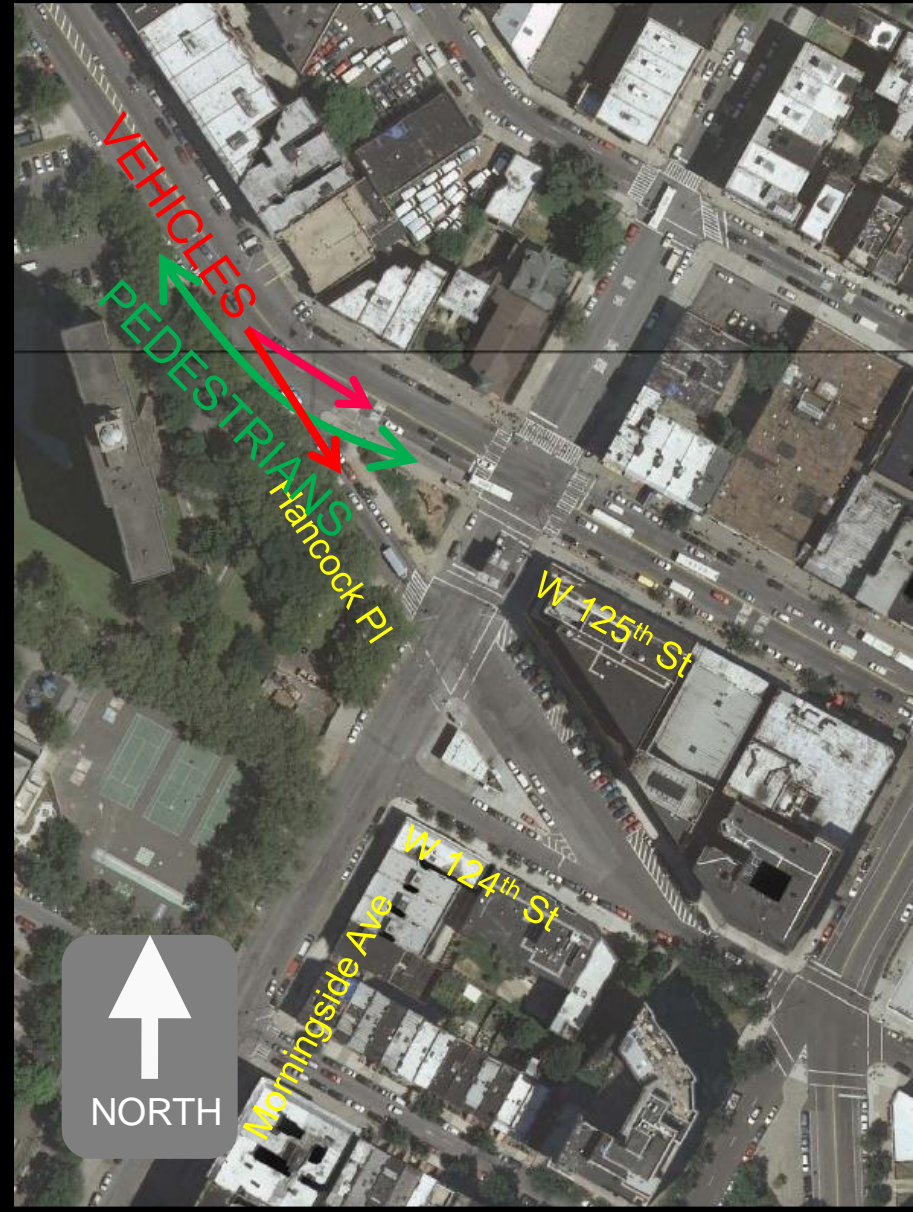
# Morningside Ave and Hancock Pl

## Existing Conditions

Pedestrian desire line along W 125<sup>th</sup> Street puts them in conflict with cars entering Hancock Place

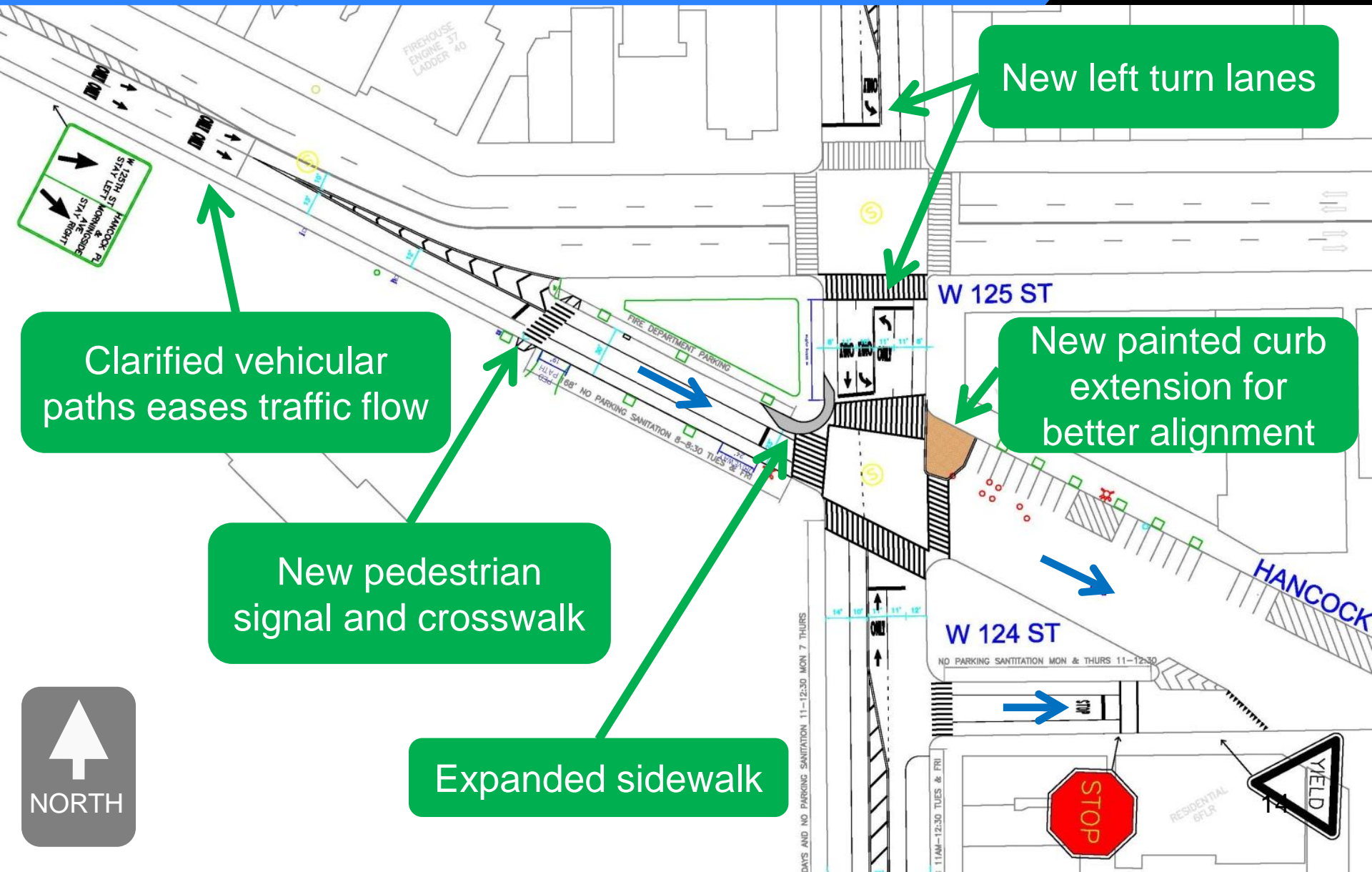


Over 500 pedestrians cross a hour during PM peak





# Morningside Ave and Hancock Pl Proposal





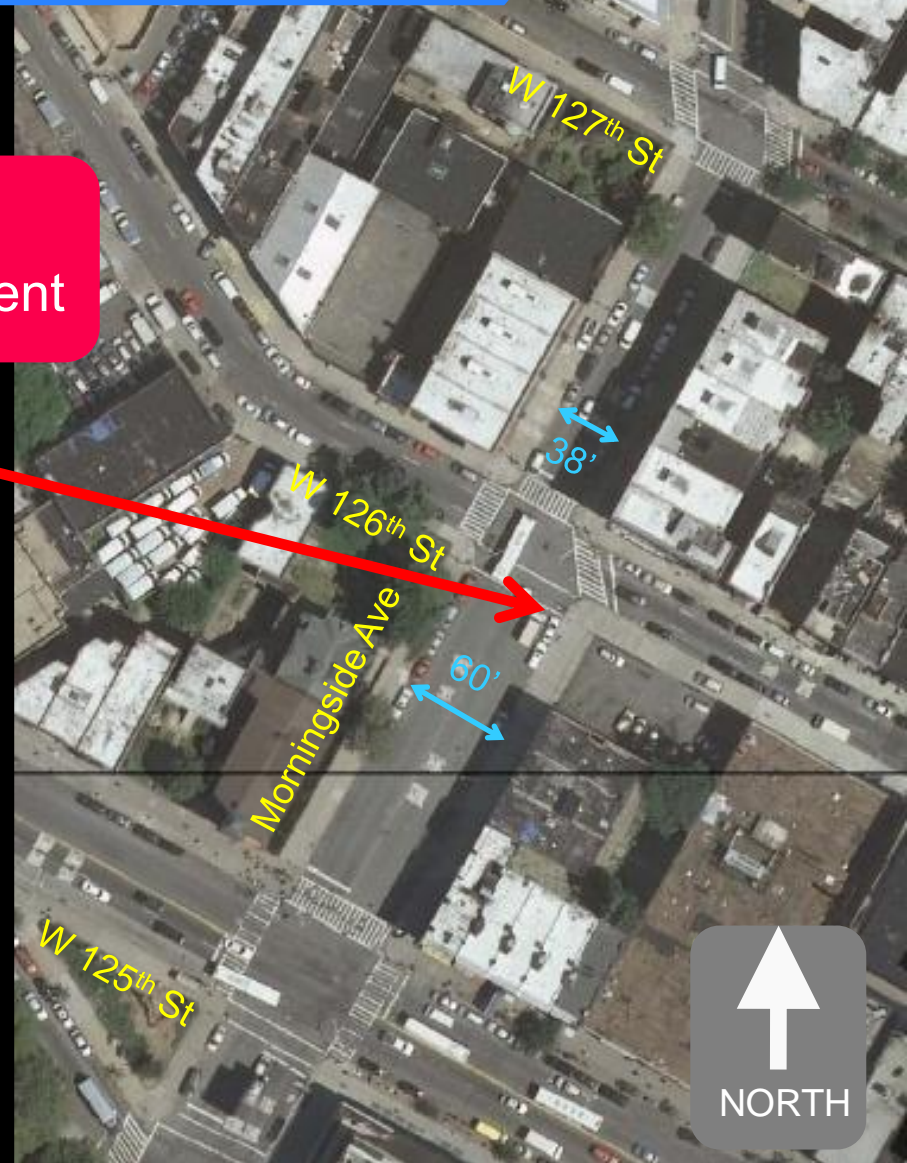
# Morningside Ave and W 126<sup>th</sup> Street

## Existing Conditions

North of W 126<sup>th</sup> Street, Morningside narrows to 38' creating a skewed alignment



Five injuries at this intersection  
in 5 year period from 2007-2011  
Two were pedestrian





# Morningside Ave and W 126<sup>th</sup> Street Proposal

New left turn lanes

←  
W 126 ST



Paint neckdown improves alignment

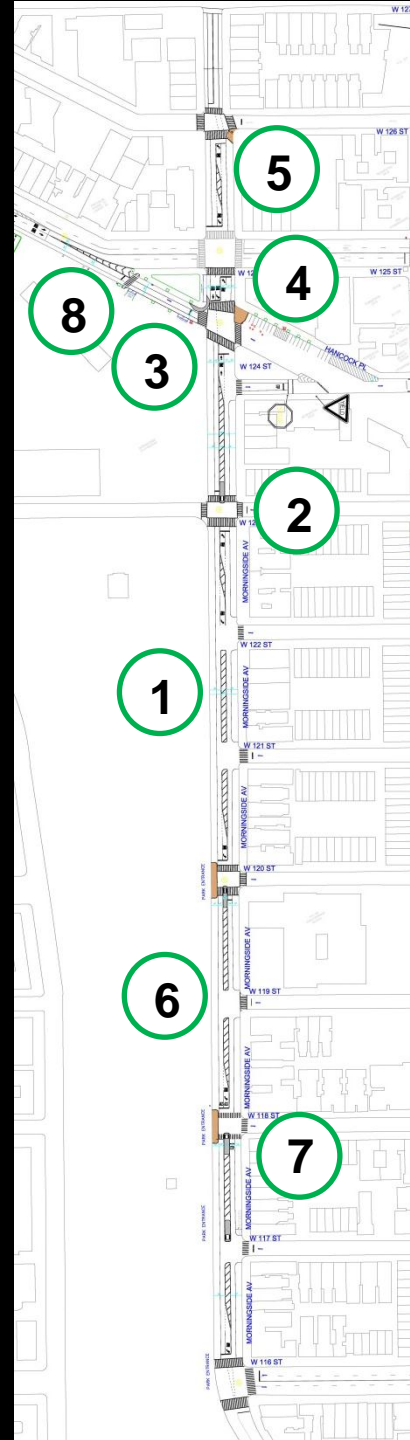




# Plan Summary

## Improvements for Morningside Avenue:

1. Reduce travel lanes from four to three lanes, one in each direction with left-turn lanes as needed between W 116<sup>th</sup> Street and W 126<sup>th</sup> Street.
2. Construct green pedestrian islands on Morningside Avenue at W 123<sup>rd</sup> Street, W 120<sup>th</sup> Street, W118th Street and W 117<sup>th</sup> Street
3. Extend concrete curb on existing GreenStreet at Morningside Avenue and Hancock Place
4. Extend NE curb with colored coating at intersection of Morningside Ave and Hancock Place
5. Extend SE curb with colored coating at intersection of Morningside Avenue and W 126<sup>th</sup> Street
6. Extend curb on Morningside and W 118<sup>th</sup> and W 120<sup>th</sup> Streets
7. Add stop sign on Morningside and W 118<sup>th</sup> Street
8. Add pedestrian signal and new crosswalk at Hancock Place





A wide-angle photograph of a city street, likely in New York City. The street is lined with trees on both sides, some with yellowing leaves, suggesting autumn. Several cars are parked along the curbs, and a few are driving in the lanes. In the background, there are various city buildings, including some taller ones. A large green circle is overlaid on the right side of the image, containing the text "Thank You".

**Thank  
You**

[www.nyc.gov/dot](http://www.nyc.gov/dot)