

# 71st Avenue Plaza

## Public Presentation

August 19, 2013



a joint venture

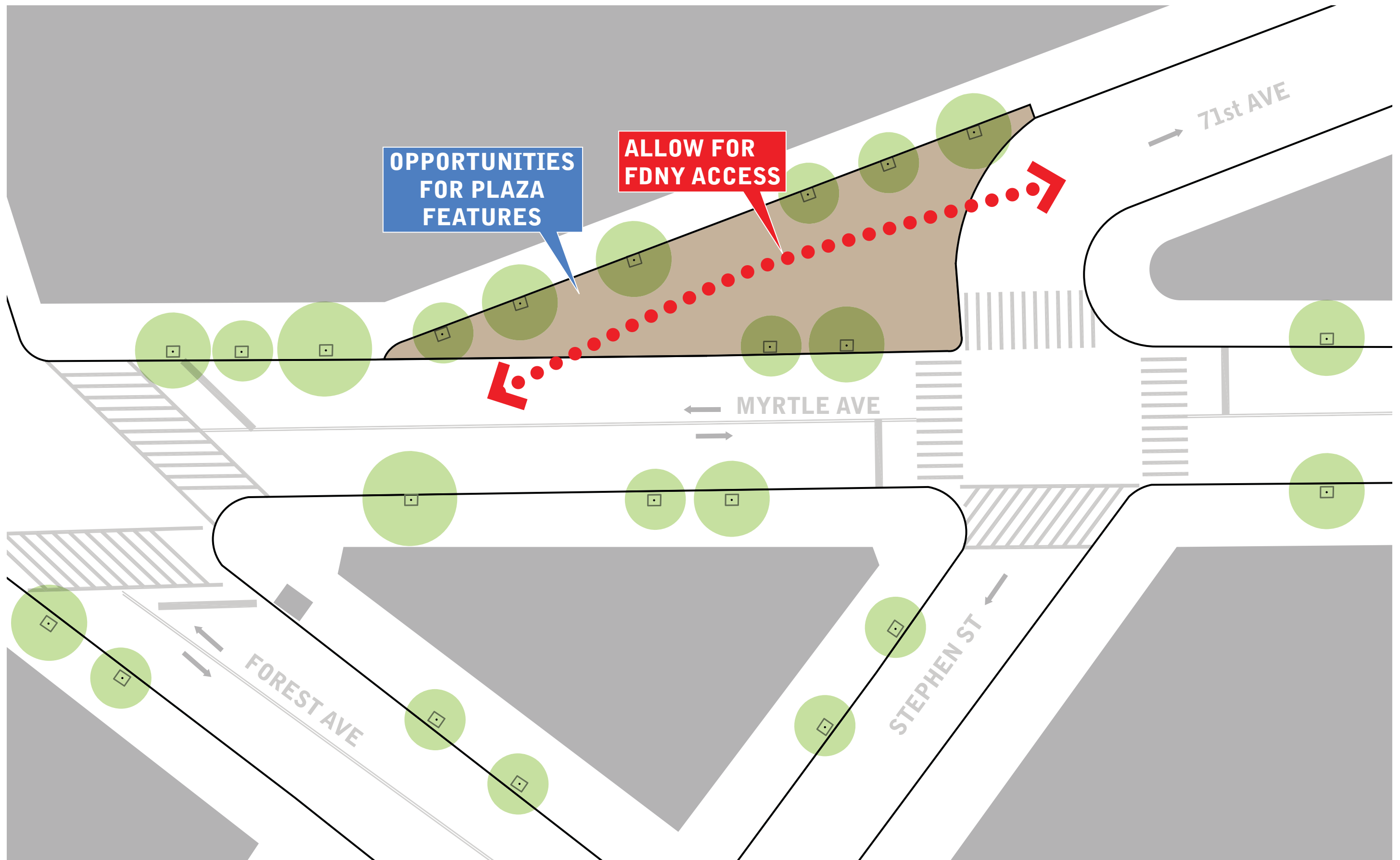






# 71st Avenue Plaza

Context Plan - Existing Conditions



April 3, 2013 Workshop Review  
Permanent Plaza Program Elements Diagram

# April 3, 2013 Workshop Review

## Selection of Comments Shared by Multiple Groups

- Strong desire for additional landscaping and seating area(s) –

“Neighborhood Lacks Green Space”

“Maximize the Number of Street Trees”

“Create a Green Oasis”

“Use Rainwater for Plant Irrigation”

- Create raised planting areas to buffer the plaza from the heavy traffic corridor of Myrtle Avenue – many recognized the northeast corner as holding potential opportunity for a newly created large planting area –

“Raised Planters”

“Dynamic Green Buffer”

- Additional shaded areas in the summer –

“Deciduous Shade Trees”

“Umbrellas”

“Light colored pavement to reduce heat”

- Space that can accommodate a broad range of programming –

“Rotating Art Exhibit”

“Local Emerging Artist Community”

“Highly Visible Programming”

“Performance Area”

- Use “special” pavement

- Need bicycle racks, but at the edges of the Plaza

- Make connections to businesses facing the Plaza

- Use lighting to increase evening use of the space and create visual interest –

“Intimate Pedestrian Lighting”

“Uplight Plants and Sculptures”

- Include chess tables for the local group of people who already use the plaza to play chess

- Need electrical connection to facilitate programming desires

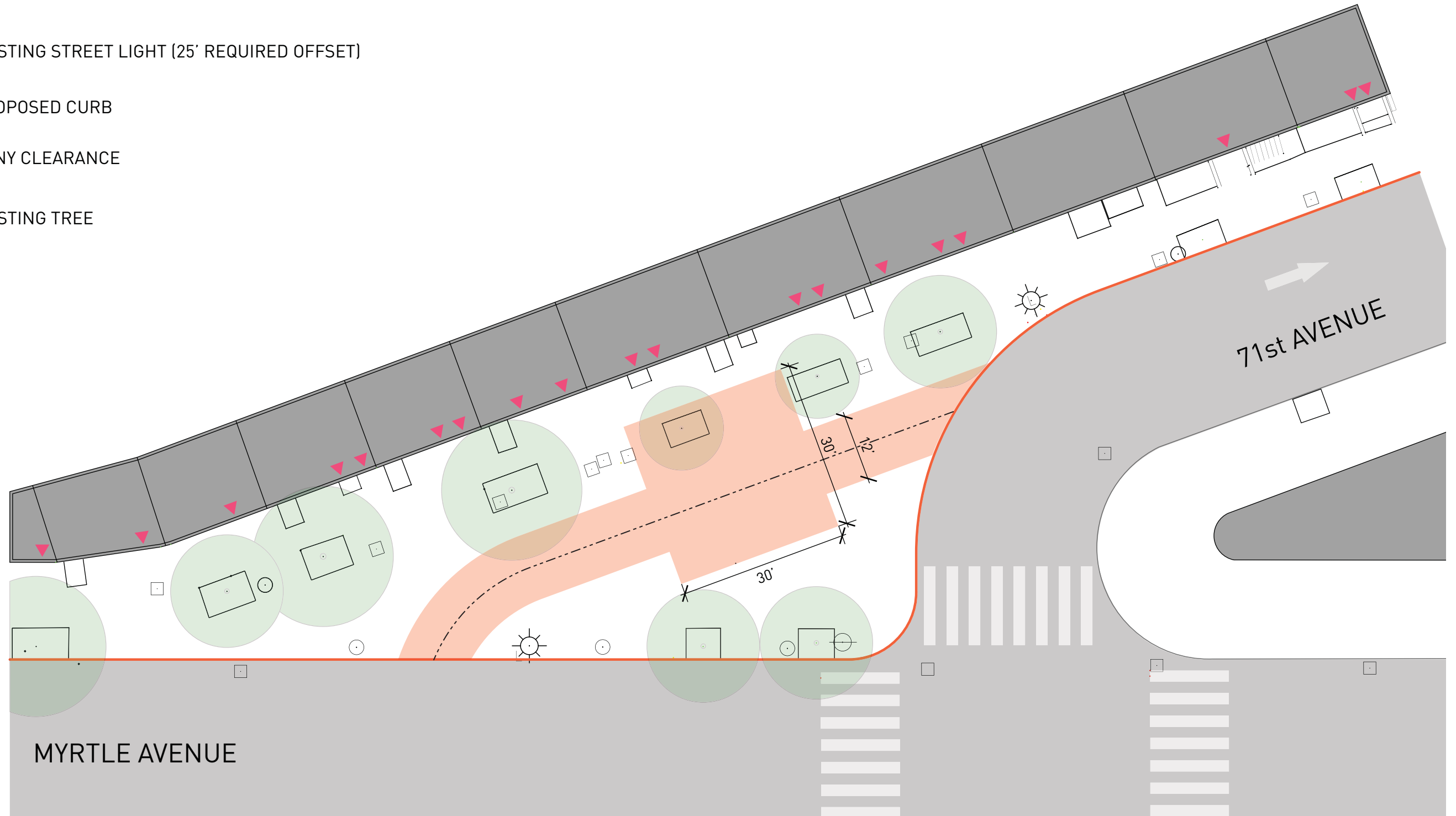
# FDNY CLEARANCE DIAGRAM

 EXISTING STREET LIGHT (25' REQUIRED OFFSET)

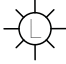







 PROPOSED CURB

 FDNY CLEARANCE

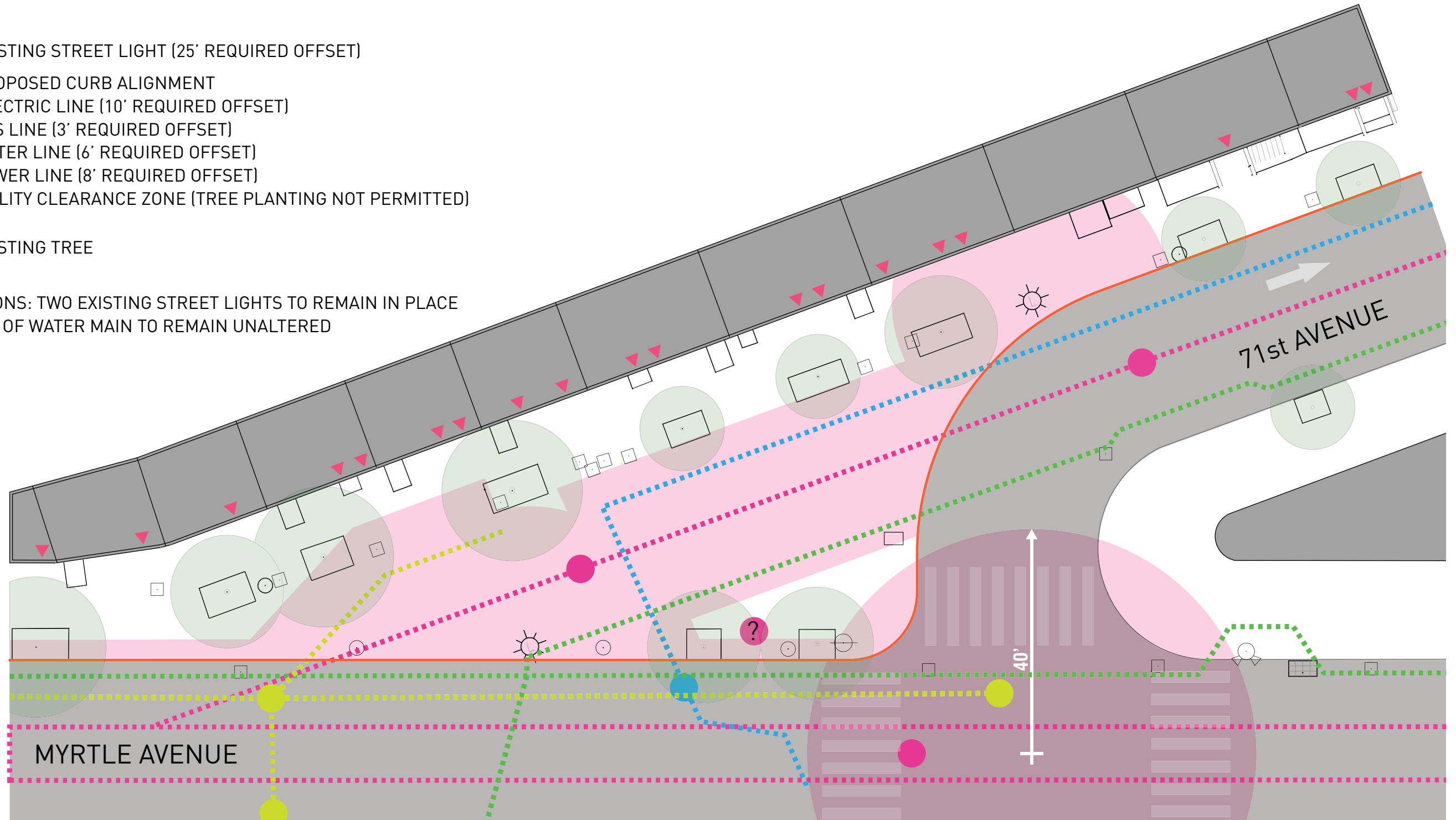
 EXISTING TREE



# STREET TREE CLEARANCE DIAGRAM

-  EXISTING STREET LIGHT (25' REQUIRED OFFSET)
-  PROPOSED CURB ALIGNMENT
-  ELECTRIC LINE (10' REQUIRED OFFSET)
-  GAS LINE (3' REQUIRED OFFSET)
-  WATER LINE (6' REQUIRED OFFSET)
-  SEWER LINE (8' REQUIRED OFFSET)
-  UTILITY CLEARANCE ZONE (TREE PLANTING NOT PERMITTED)
-  EXISTING TREE

\*ASSUMPTIONS: TWO EXISTING STREET LIGHTS TO REMAIN IN PLACE  
ALIGNMENT OF WATER MAIN TO REMAIN UNALTERED




# PLAZA REDEVELOPMENT CONCEPT DIAGRAM

 EXISTING STREET LIGHT (25' REQUIRED OFFSET)

 PROPOSED CURB

 EXISTING TREE

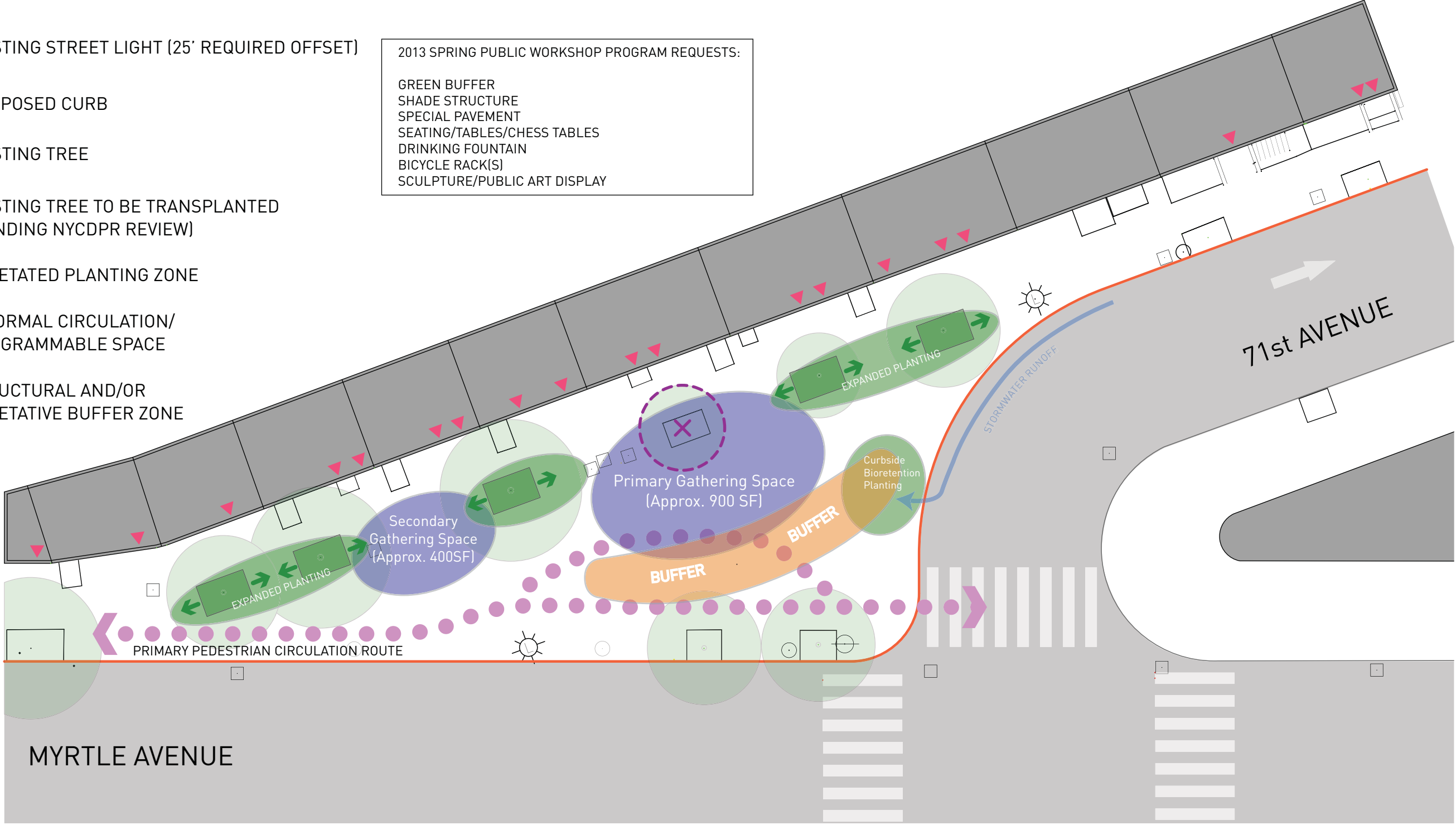
 EXISTING TREE TO BE TRANSPLANTED (PENDING NYCDPR REVIEW)

 VEGETATED PLANTING ZONE

 INFORMAL CIRCULATION/ PROGRAMMABLE SPACE

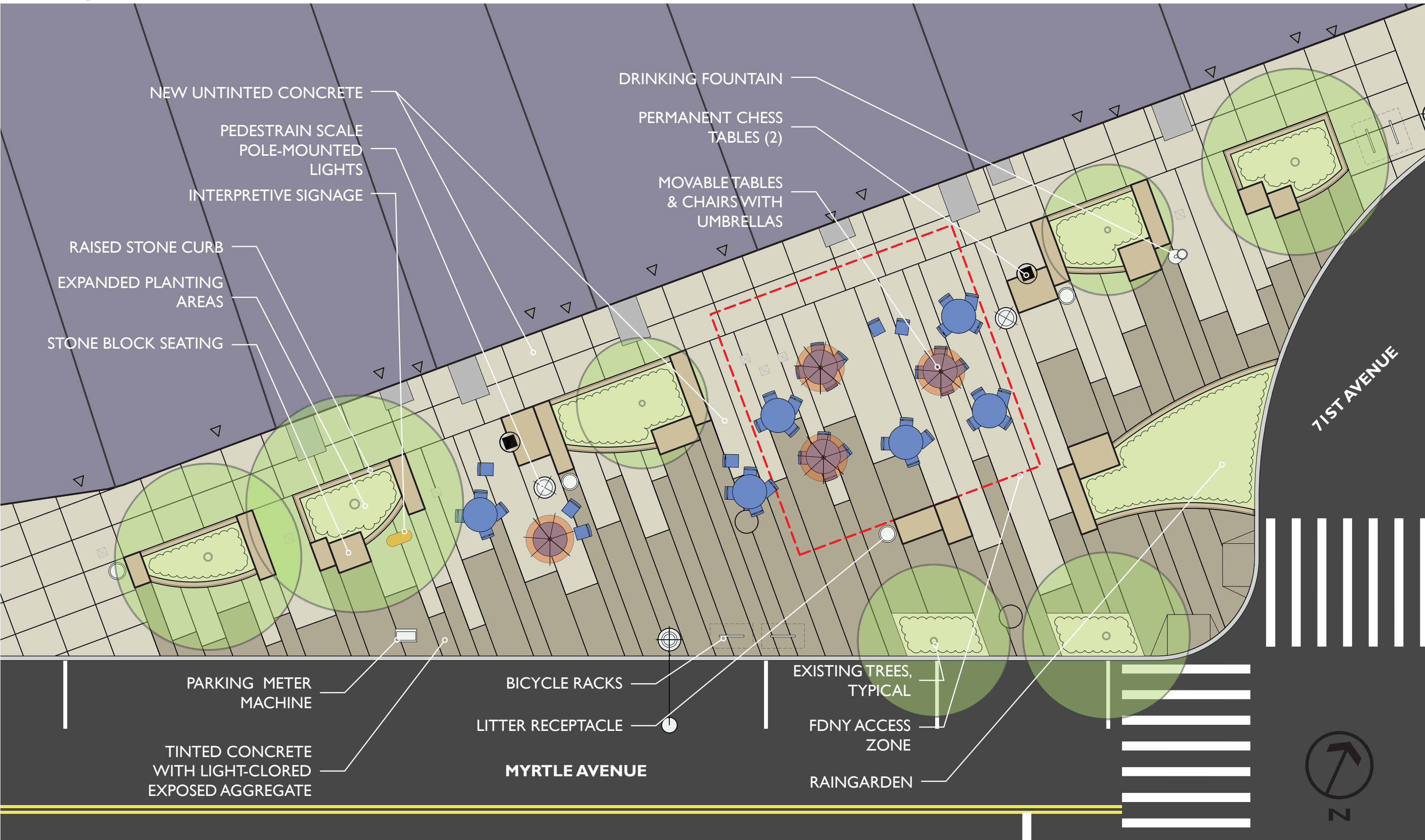
 STRUCTURAL AND/OR VEGETATIVE BUFFER ZONE

2013 SPRING PUBLIC WORKSHOP PROGRAM REQUESTS:  
 GREEN BUFFER  
 SHADE STRUCTURE  
 SPECIAL PAVEMENT  
 SEATING/TABLES/CHESS TABLES  
 DRINKING FOUNTAIN  
 BICYCLE RACK(S)  
 SCULPTURE/PUBLIC ART DISPLAY





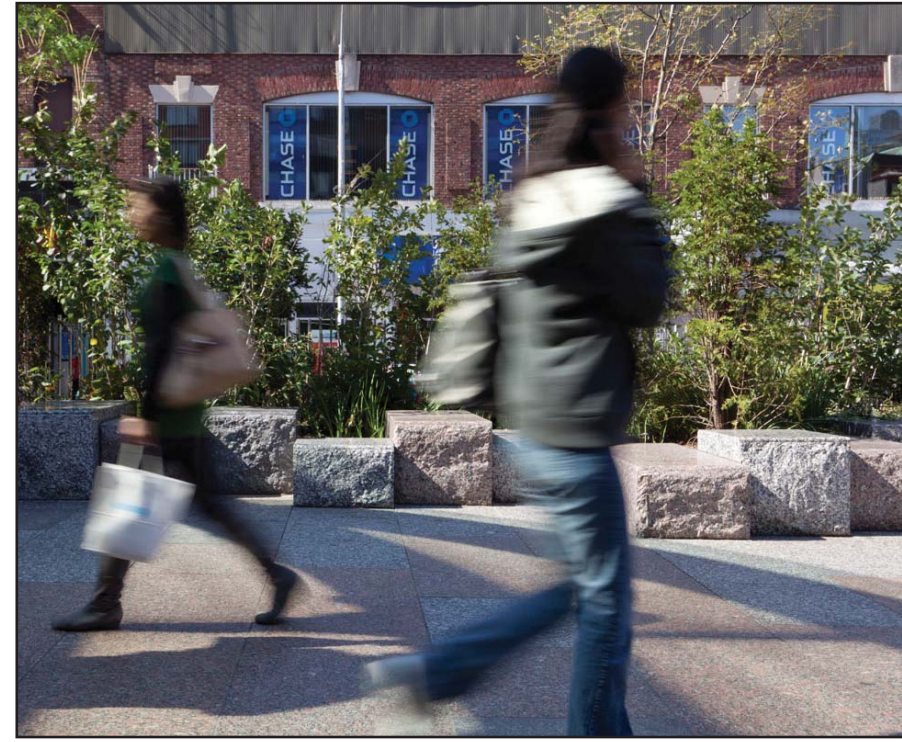
# Proposed Plaza



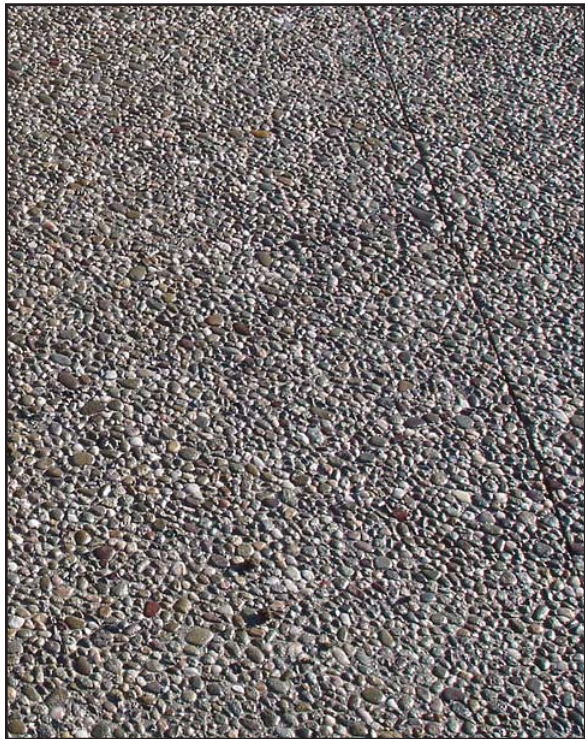




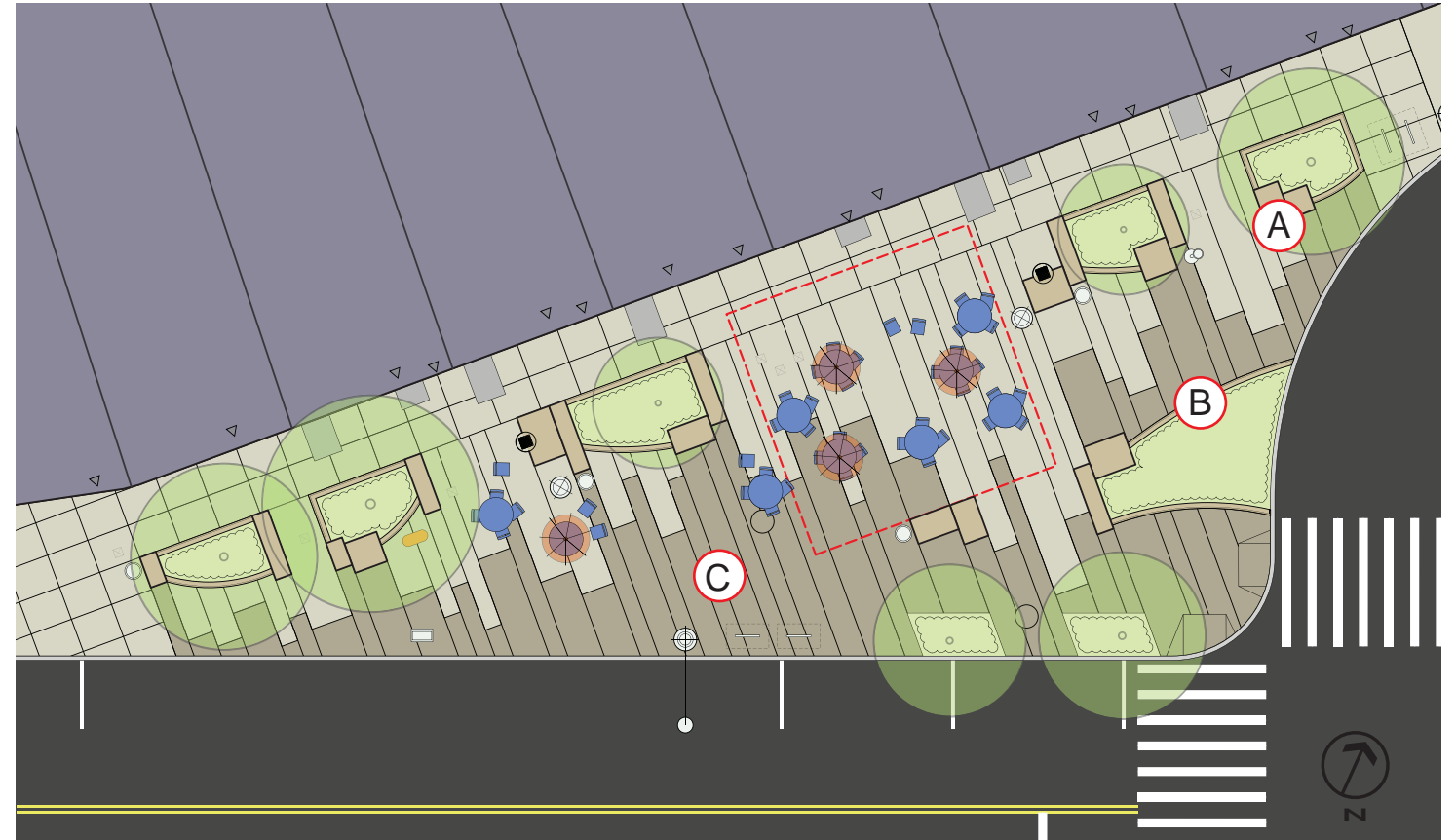
Item A. Stone Block Seating used at Edges of Planting Areas



Item B. Stone Curb



Item C. Tinted Concrete with Light-colored Exposed Aggregate



Key Plan

# Materials Precedent and Typology Images





Item D. Raingarden



Key Plan

# Materials Precedent and Typology Images



EMERGENT PERENNIALS



AMSONIA HUBRICHTII



ASTER DRUMMNODII DRUMMONDS



RUDBECKIA FULGIDA VARIETY SULLIVANTIIGOLDSTURM



ASCLEPIAS INCARNATA



CEPHALANTHUS OCCIDENTALIS SUGAR SHACK

EMERGENT PERENNIALS



HELIANIUM AUTUMNALE



IRIS FLUVA



IRIS VIRGINICA



CHELONE GLABRA



VERNONIA FASCICULATA

EMERGENT PERENNIALS



MONARDA BRADBURIANA

ORNAMENTAL GRASSES



CAREX GRAYI



PANICUM VIRGATUM HANSE HERMS

SHRUBS



ITEA VIRGINICA 'SPRICH'



ARONIA ARBUTIFOLIA 'BRILLIANTISSIMA'

Biofiltration "Raingarden" Plant Images



PERENNIALS



ASTER DIVARICATUS



COREOPSIS VERTICILLATA



VERNONIA LETTERMANNII



NEPETA FAASSENII 'BLUE WONDER'

ORNAMENTAL GRASSES



BOUPELOUA GRACILIS 'BLOND AMBITION'



MUHLENBERGIA CAPILLARIS



SPOROBOLUS HETEROLEPIS

SHRUBS



MYRICA PENNSYLVANICA







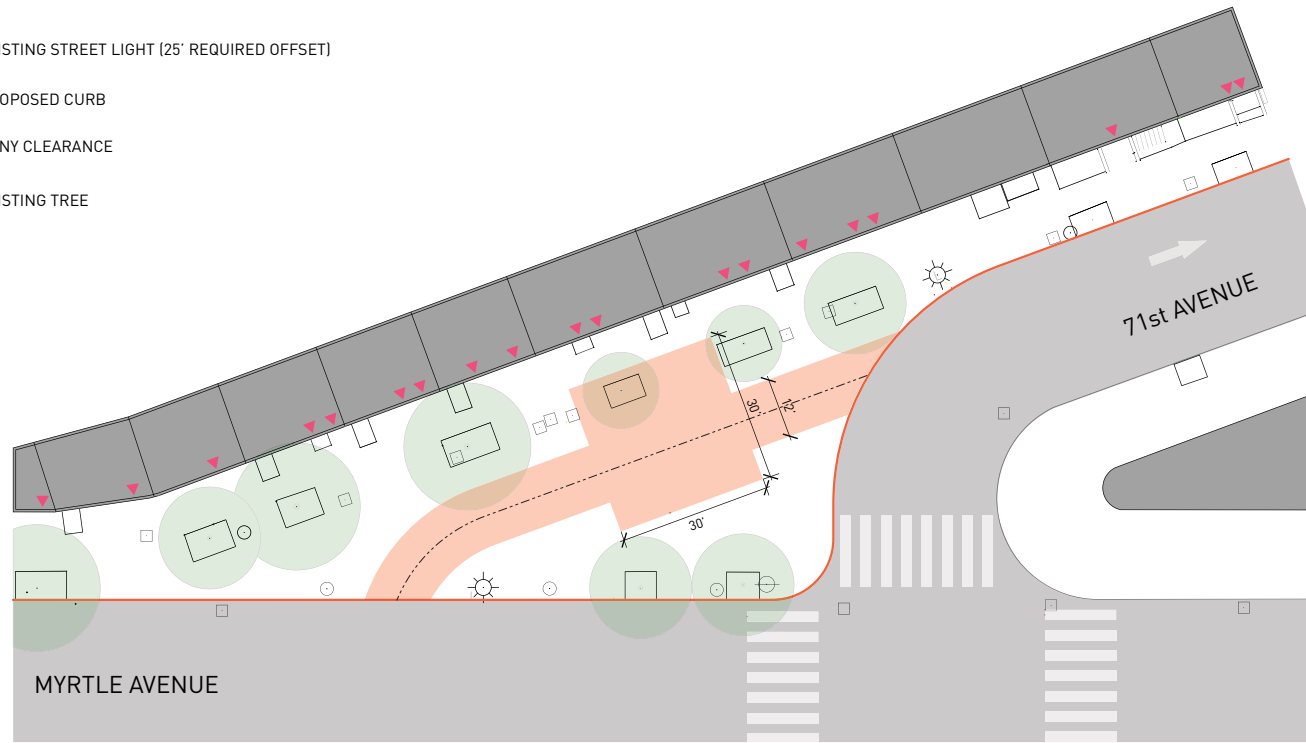
FOTHERGILLA GARDENII 'MT. AIRY'

Conventional Planting Areas - Plant Images











## FDNY CLEARANCE DIAGRAM

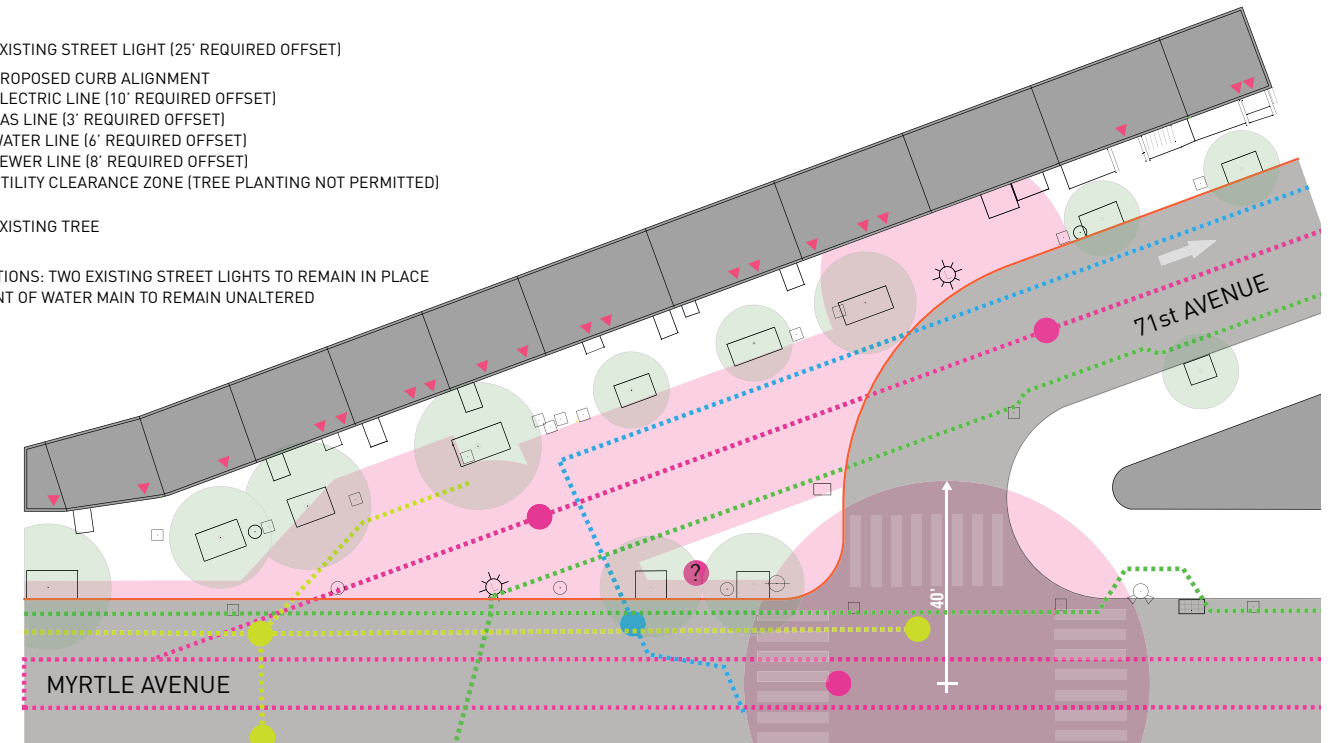
-  EXISTING STREET LIGHT (25' REQUIRED OFFSET)
-  PROPOSED CURB
-  FDNY CLEARANCE
-  EXISTING TREE



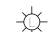






## STREET TREE CLEARANCE DIAGRAM

-  EXISTING STREET LIGHT (25' REQUIRED OFFSET)
-  PROPOSED CURB ALIGNMENT
-  ELECTRIC LINE (10' REQUIRED OFFSET)
-  GAS LINE (3' REQUIRED OFFSET)
-  WATER LINE (6' REQUIRED OFFSET)
-  SEWER LINE (8' REQUIRED OFFSET)
-  UTILITY CLEARANCE ZONE (TREE PLANTING NOT PERMITTED)
-  EXISTING TREE

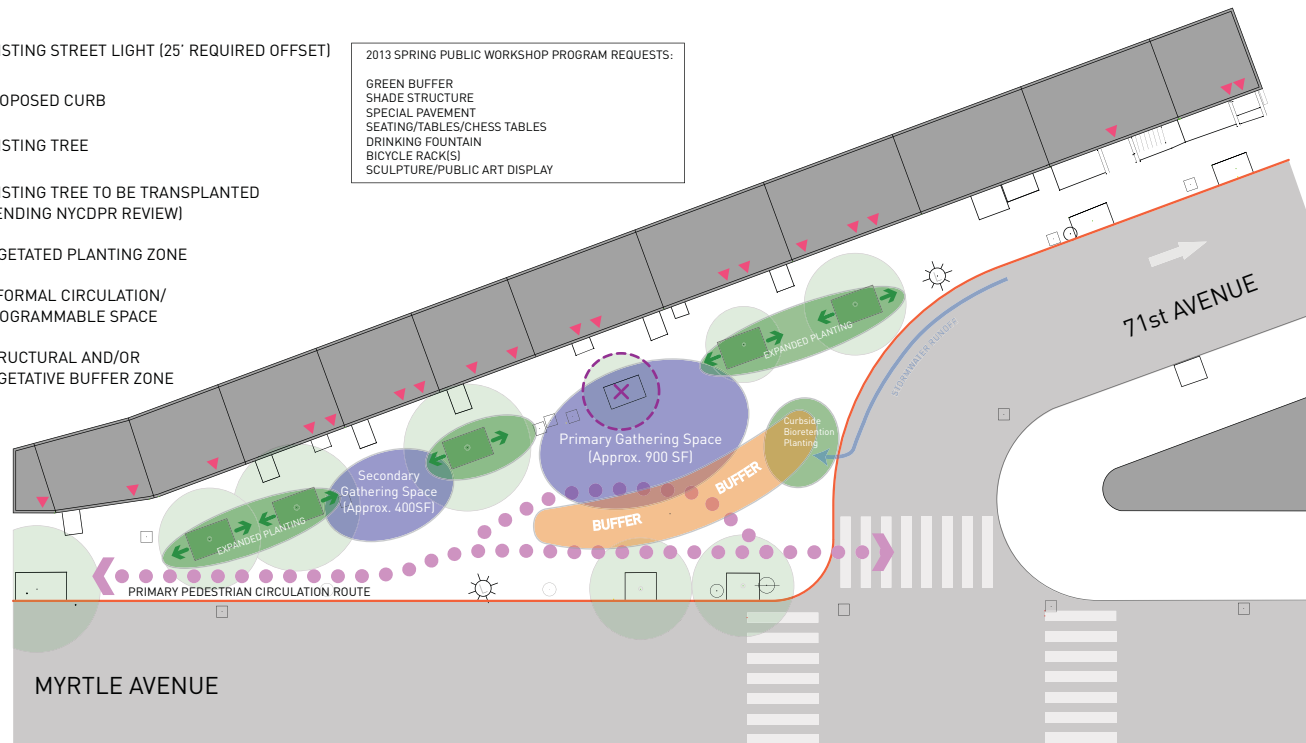
\*ASSUMPTIONS: TWO EXISTING STREET LIGHTS TO REMAIN IN PLACE  
ALIGNMENT OF WATER MAIN TO REMAIN UNALTERED



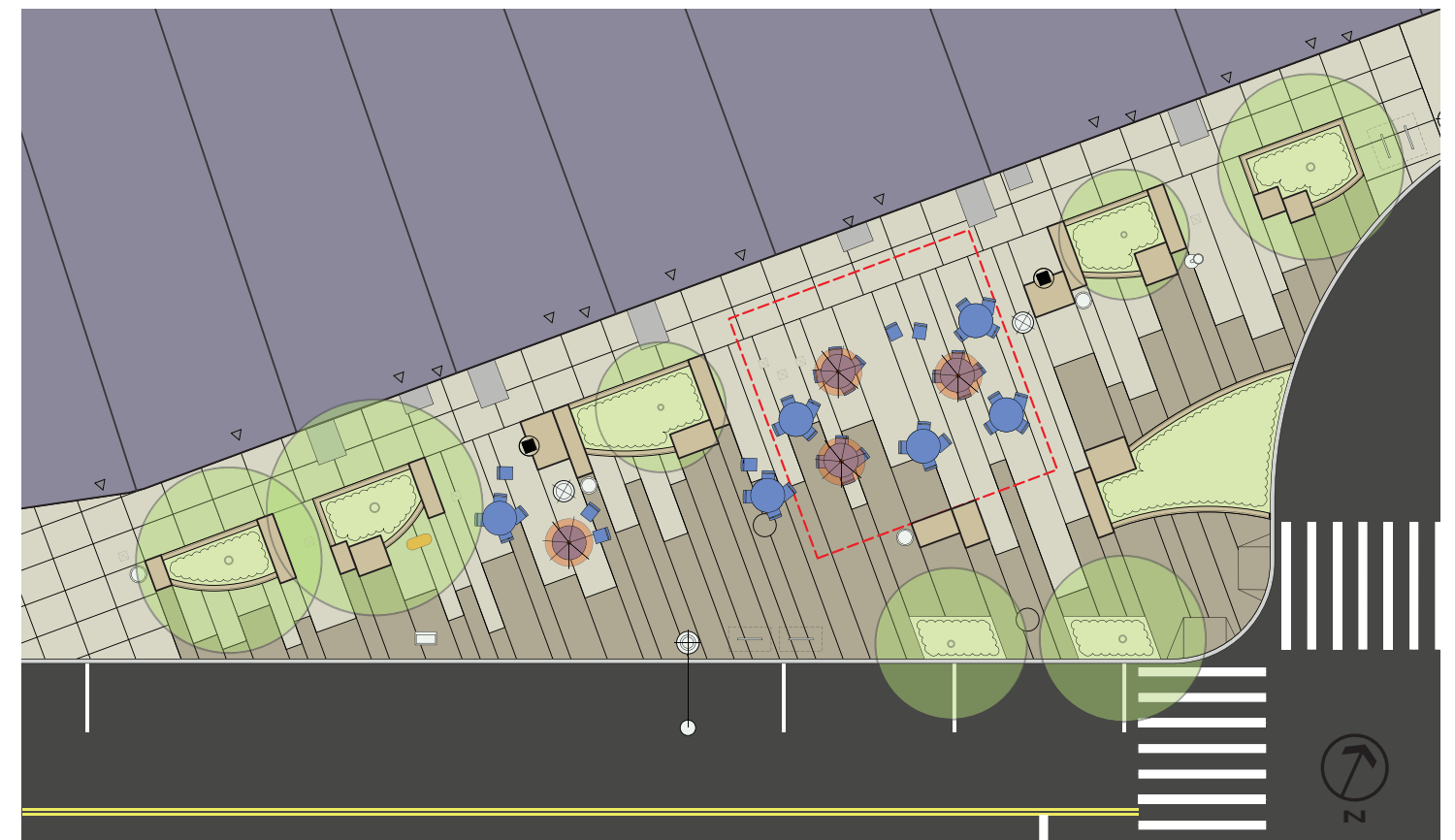
## PLAZA REDEVELOPMENT CONCEPT DIAGRAM

-  EXISTING STREET LIGHT (25' REQUIRED OFFSET)
-  PROPOSED CURB
-  EXISTING TREE
-  EXISTING TREE TO BE TRANSPLANTED (PENDING NYCDPR REVIEW)
-  VEGETATED PLANTING ZONE
-  INFORMAL CIRCULATION/ PROGRAMMABLE SPACE
-  STRUCTURAL AND/OR VEGETATIVE BUFFER ZONE

2013 SPRING PUBLIC WORKSHOP PROGRAM REQUESTS:  
GREEN BUFFER  
SHADE STRUCTURE  
SPECIAL PAVEMENT  
SEATING/TABLES/CHESS TABLES  
DRINKING FOUNTAIN  
BICYCLE RACK(S)  
SCULPTURE/PUBLIC ART DISPLAY




## PRELIMINARY DESIGN - SITE PLAN



## Summary of Preliminary Design Process

facebook  [Dot Plazas](#) [Find Friends](#) [Home](#)

You are posting, commenting, and liking as 71st Ave Plaza — [Change to Dot Plazas](#)



**71st Ave Plaza**  
28 likes · 2 talking about this · 8 were here

[Add A Category](#)  
[Flushing, New York 11385](#)  
[Add Your Phone Number](#)  
[Always open](#)

[About](#) [Photos](#) [Likes](#) [Map](#) [Events](#)

[Ads Manager](#)


Now  
2012  
Joined Facebook

Highlights

[Status](#) [Photo / Video](#) [Event, Milestone +](#)

Share how your day has been...

10 Friends  
Like 71st Ave Plaza



71st Ave Plaza updated their cover photo.



## NEXT STEPS

Review by the Community Board and Transportation Committee

Preliminary Design Review by the City of New York Public Design Commission

Design Review Meeting with New York City Department of Parks & Recreation representatives regarding proposed street tree transplant

Review by FDNY for emergency access requirements

Development of Construction Documents

Final Design Review by the City of New York Public Design Commission

Construction Documents Released for Bidding

Project Construction