

NYCDOT SAFE ROUTES TO SCHOOL



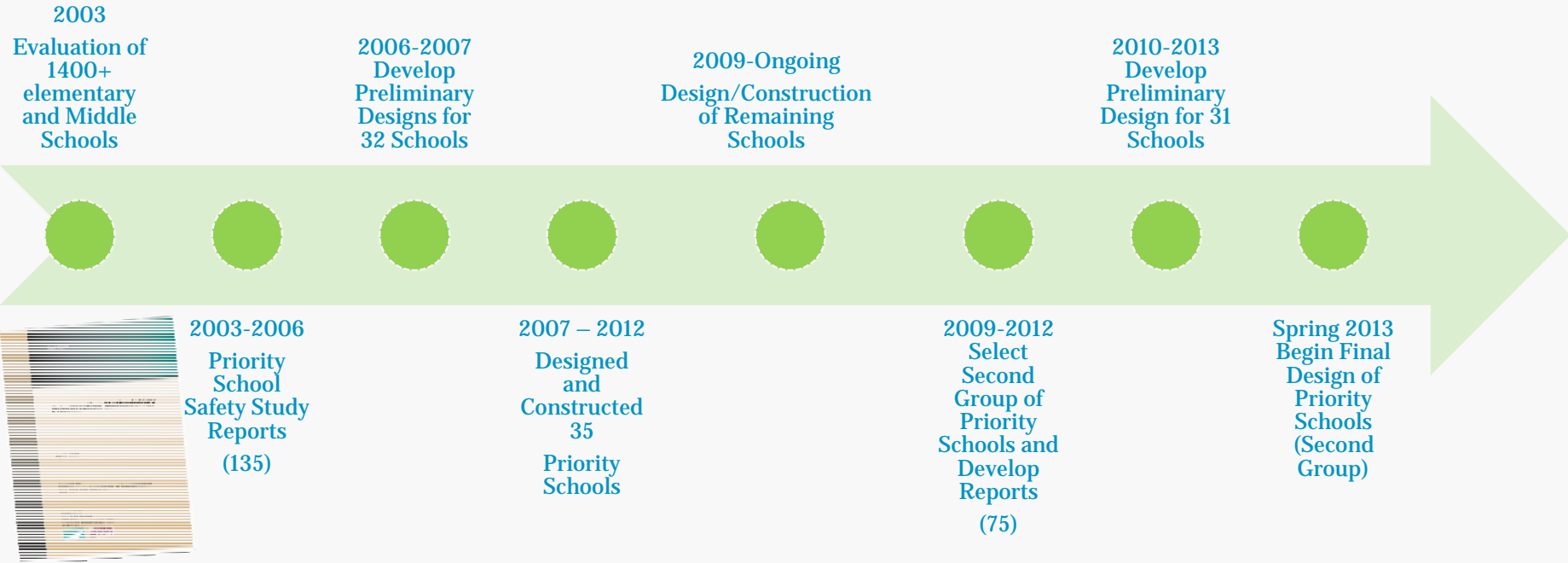
COMMUNITY BOARD NO. 6

**P.S. 347,
THE AMERICAN SIGN LANGUAGE AND ENGLISH
LOWER SCHOOL**

4-1-13



PROJECT TIMELINE

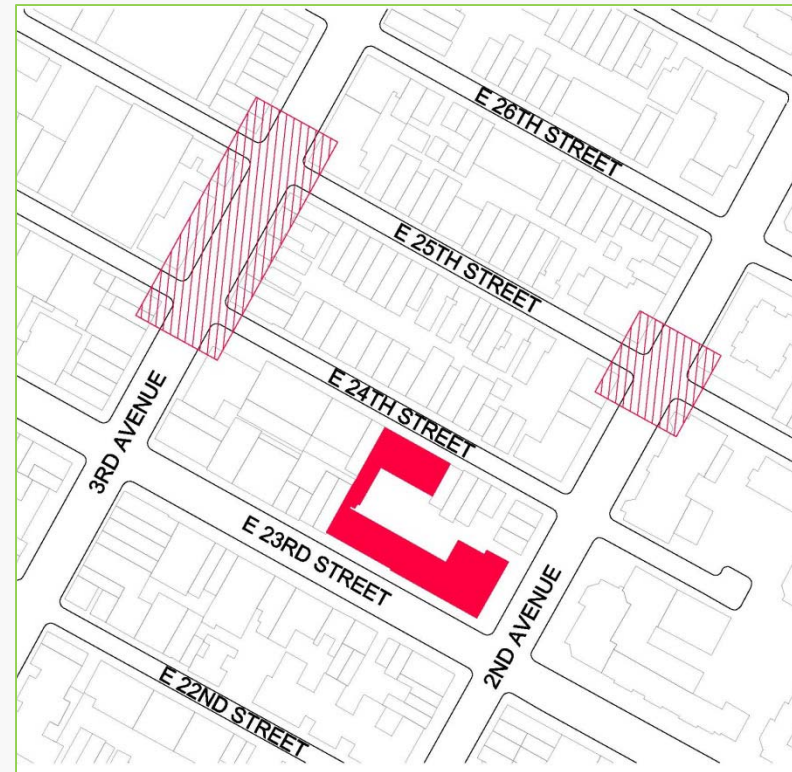


Construction of School Safety Recommendations

Manhattan

P.S. 347

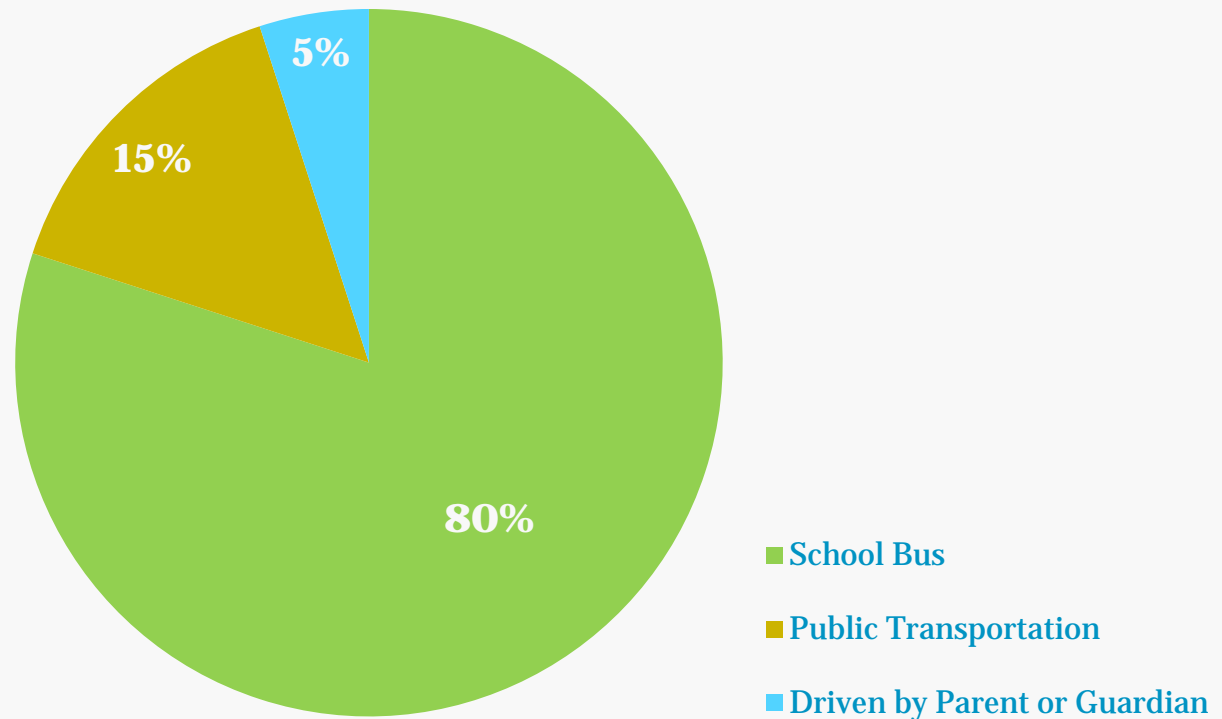
- **P.S. 154, Harriet Tubman**
Harlem
- **P.S. 347, American Sign Language School**
Gramercy
- **Park Avenue Christian Church Day School**
Upper East Side
- **Ramaz Lower School**
Upper East Side
- **St. Joseph's School**
Yorkville



Traffic Operation and Modes of Travel



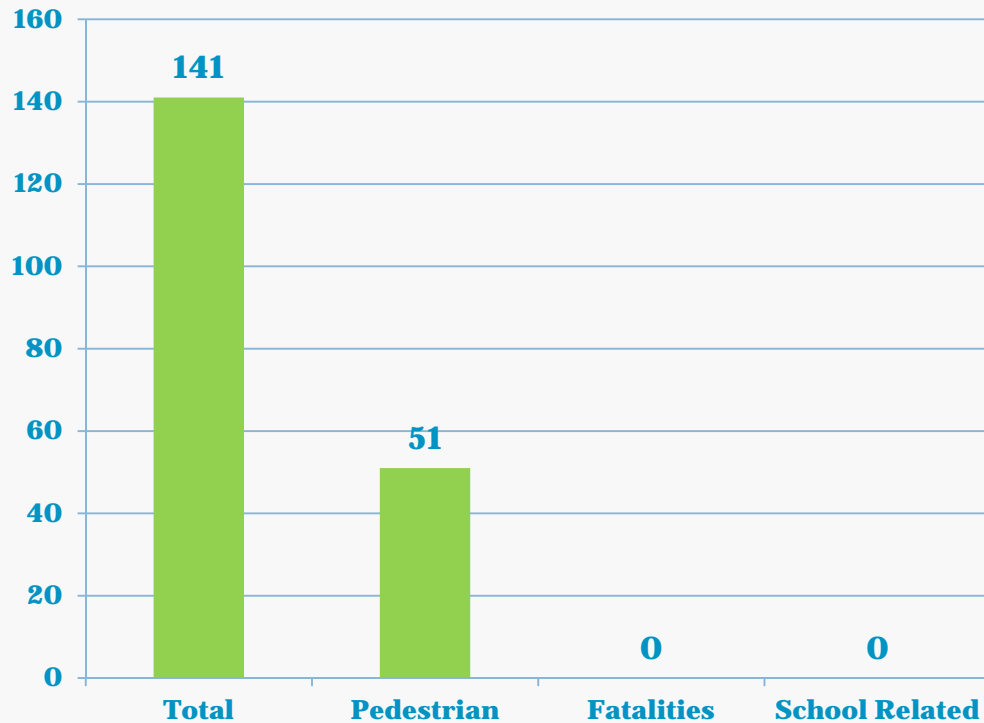
Excerpts from the Original School Safety Report



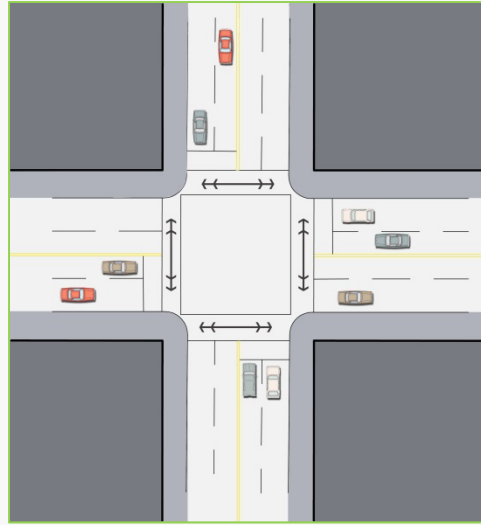
Accident Summary



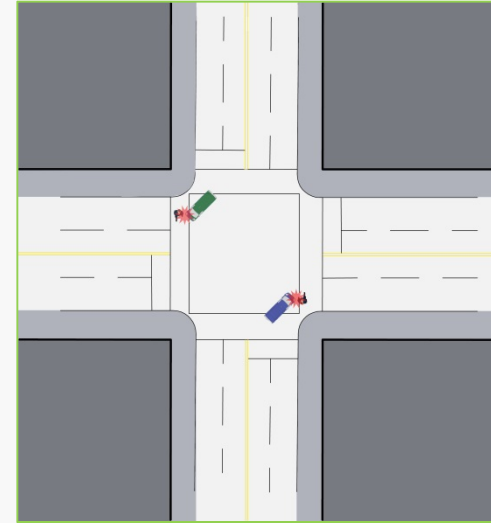
Excerpts from the Original School Safety Report



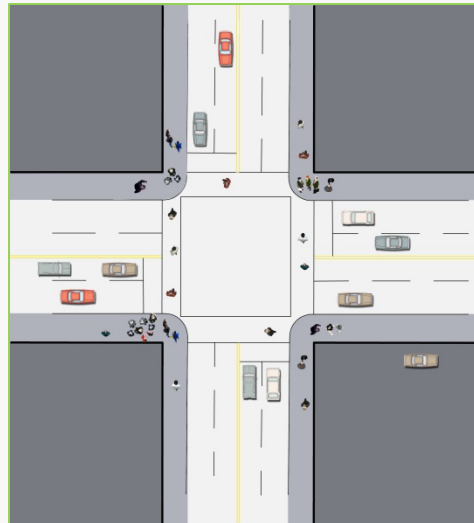
Analysis



Wide Crossings

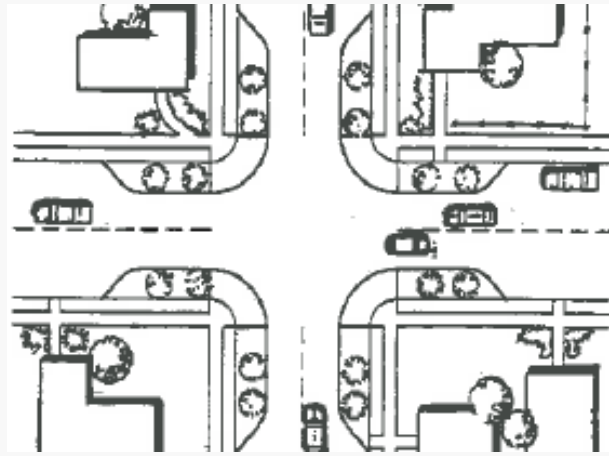


Pedestrian Accidents

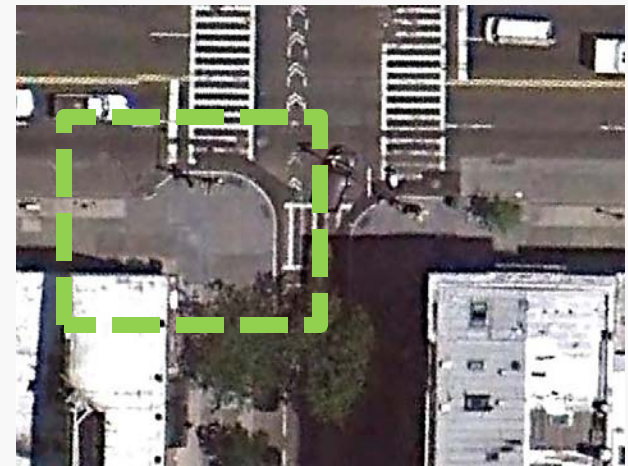


Critical Intersections

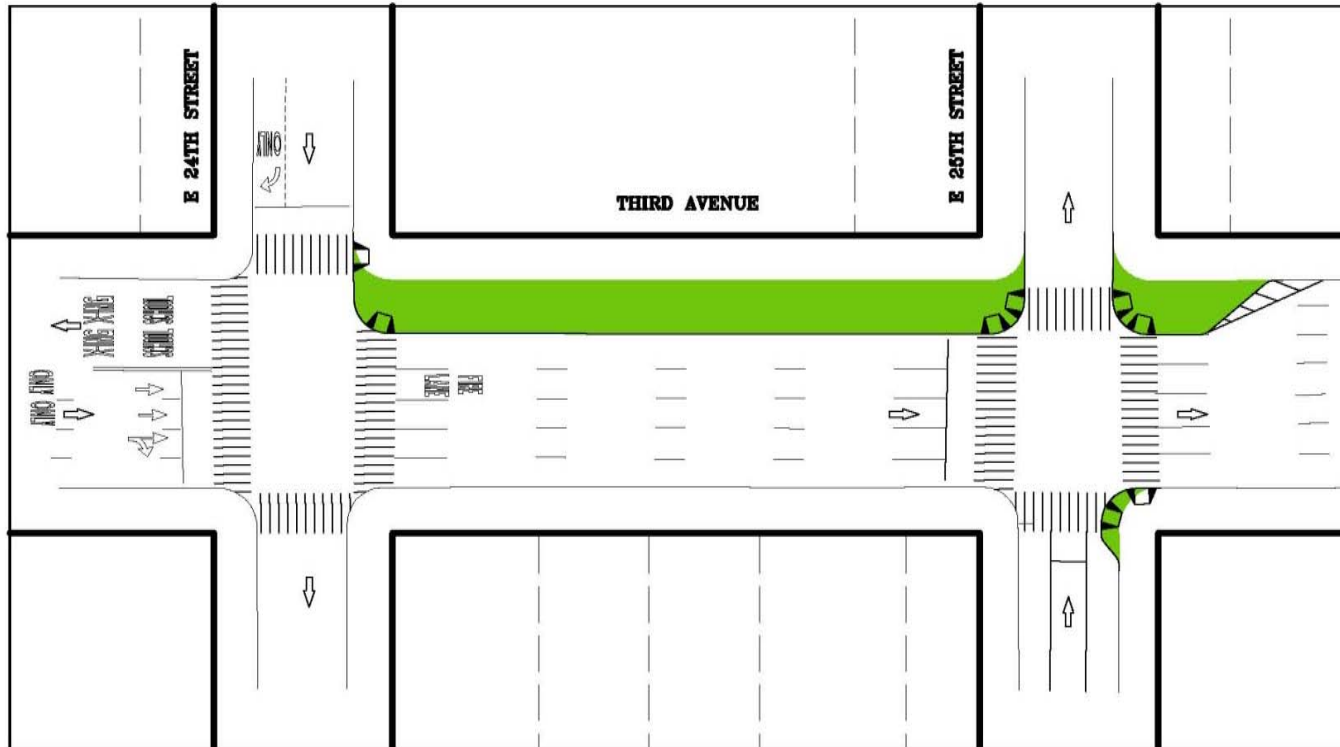
Neckdowns



Sketch of Full Neckdowns





PROPOSED IMPROVEMENTS INCLUDED IN THE Schematic Geometric Design Plans

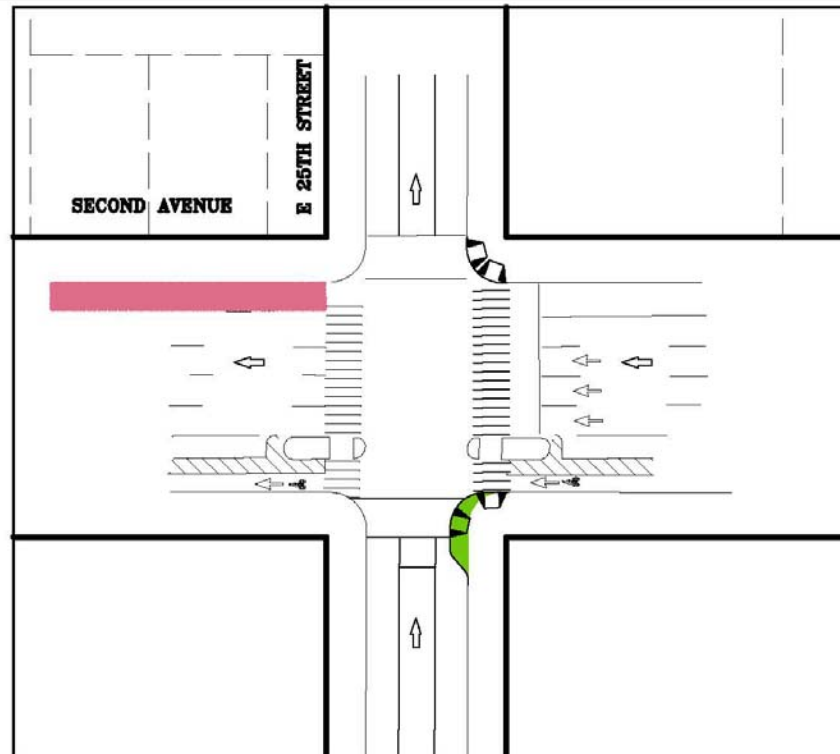


Third Avenue between E 24th Street and E 25th Street

LEGEND:

-  PROPOSED CURB EXTENSION
-  PROPOSED CONCRETE BUS PAD

PROPOSED IMPROVEMENTS INCLUDED IN THE Schematic Geometric Design Plans



Second Avenue and E 25th Street

LEGEND:



PROPOSED CURB EXTENSION



PROPOSED CONCRETE BUS PAD

SCHEDULE

