

Broadway Junction

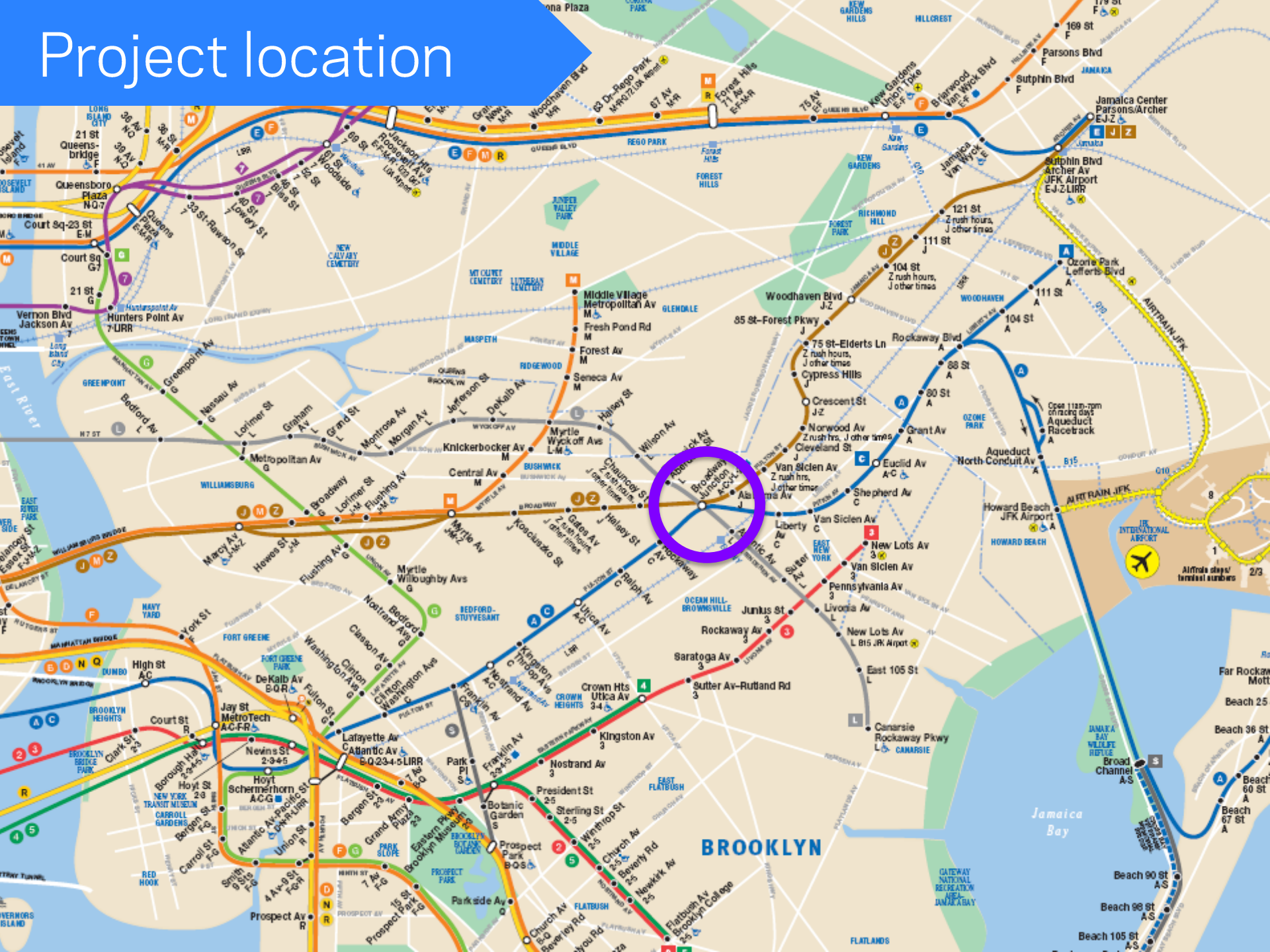
Enhancement Project

Spring
2012



Commissioner Janette Sadik-Khan New York City Department of Transportation
Presented on May 14, 2012 to Brooklyn Community Board 16

Project location



Project area



Project Area

Callahan-Kelly Park

Broadway Junction
Station entrance

Broadway

Eastern Pkwy

Truxton St

Fulton St

Herkimer St

Atlantic Ave

Van Sinderen Ave

Bushwick Ave

East New York Ave

Project timeline

2008	Meeting with Congressman Towns and community <ul style="list-style-type: none">➤ Discussed issues surrounding the Broadway Junction station area and the opportunity to fund the project
2009	1st Community Advisory Committee meeting Public open house at Broadway Junction Station <ul style="list-style-type: none">➤ Identified issues and concerns➤ Brainstormed potential design solutions
2010	Conceptual design and environmental analysis 2nd Community Advisory Committee meeting <ul style="list-style-type: none">➤ Presented conceptual design for Van Sinderen Avenue and solicited comments
2011	Preliminary Design Received \$3.4m FTA Bus Livability grant to fund construction
2012	Final Design
2013/14	Construction

Issues - Vehicles



Buses

- Difficulty getting to the curb, open doors in travel lane
- Conflicts between passenger boarding and layovers

Livery cabs

- Block buses at the curb and add to congestion
- No dedicated pick-up location



All vehicles

- Congestion
- Turning conflicts at Fulton St

Issues - Pedestrians

Movement and safety

- Crowded sidewalks due to bus waiting, vendors, and refuse
- Difficult to cross Van Sinderen Avenue

Amenities

- Lack of shelters and seating
- Not enough greenery, poor park accessibility
- Median in poor condition
- Lack of lighting



Design goals

- Widen sidewalks at bus stops
- Improve pedestrian safety and circulation
- Improve streetscape appearance, add greenery
- Reduce conflicts between buses, livery cabs, and general traffic
- Accommodate necessary curbside access

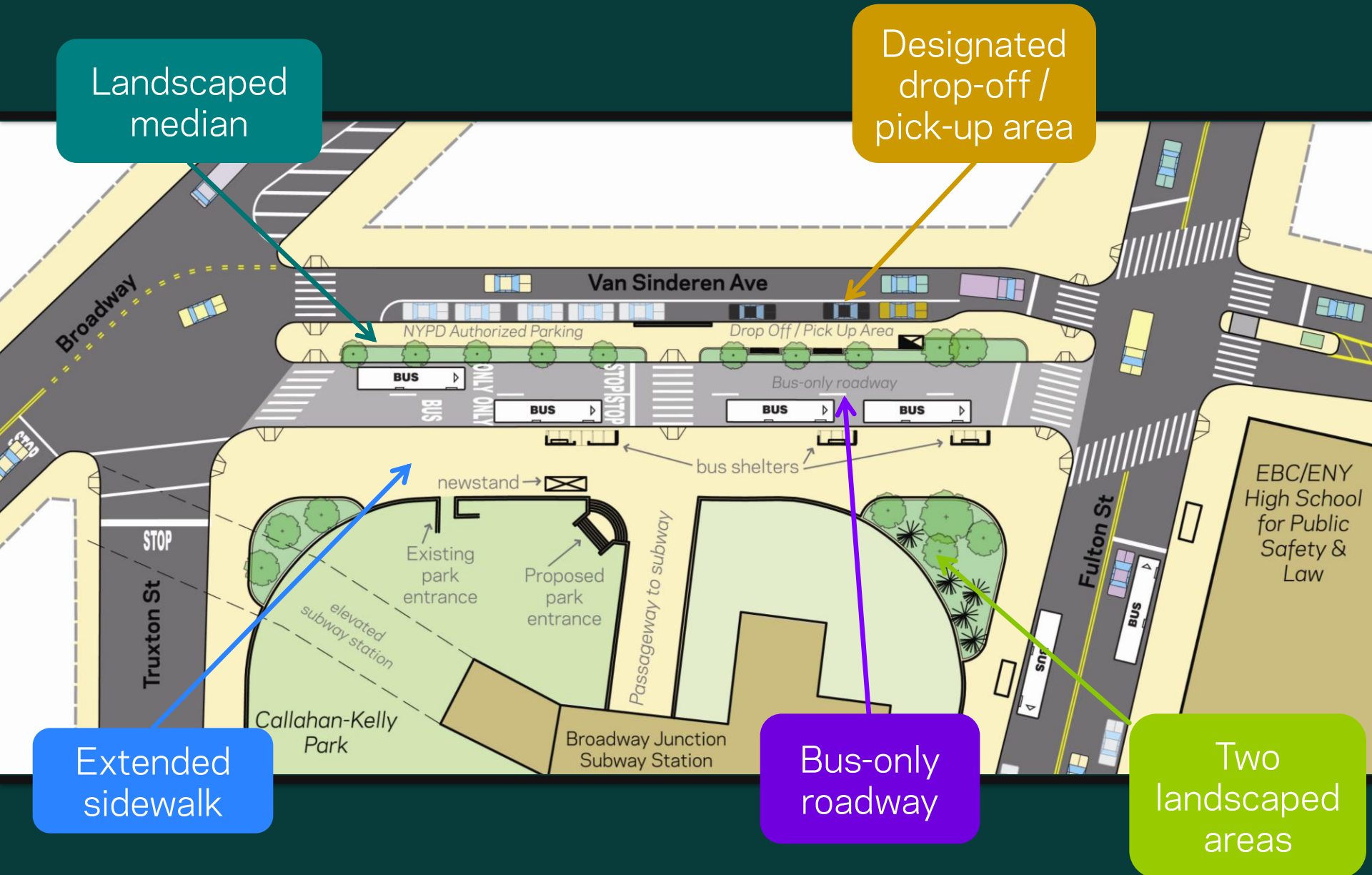
Existing



Proposed



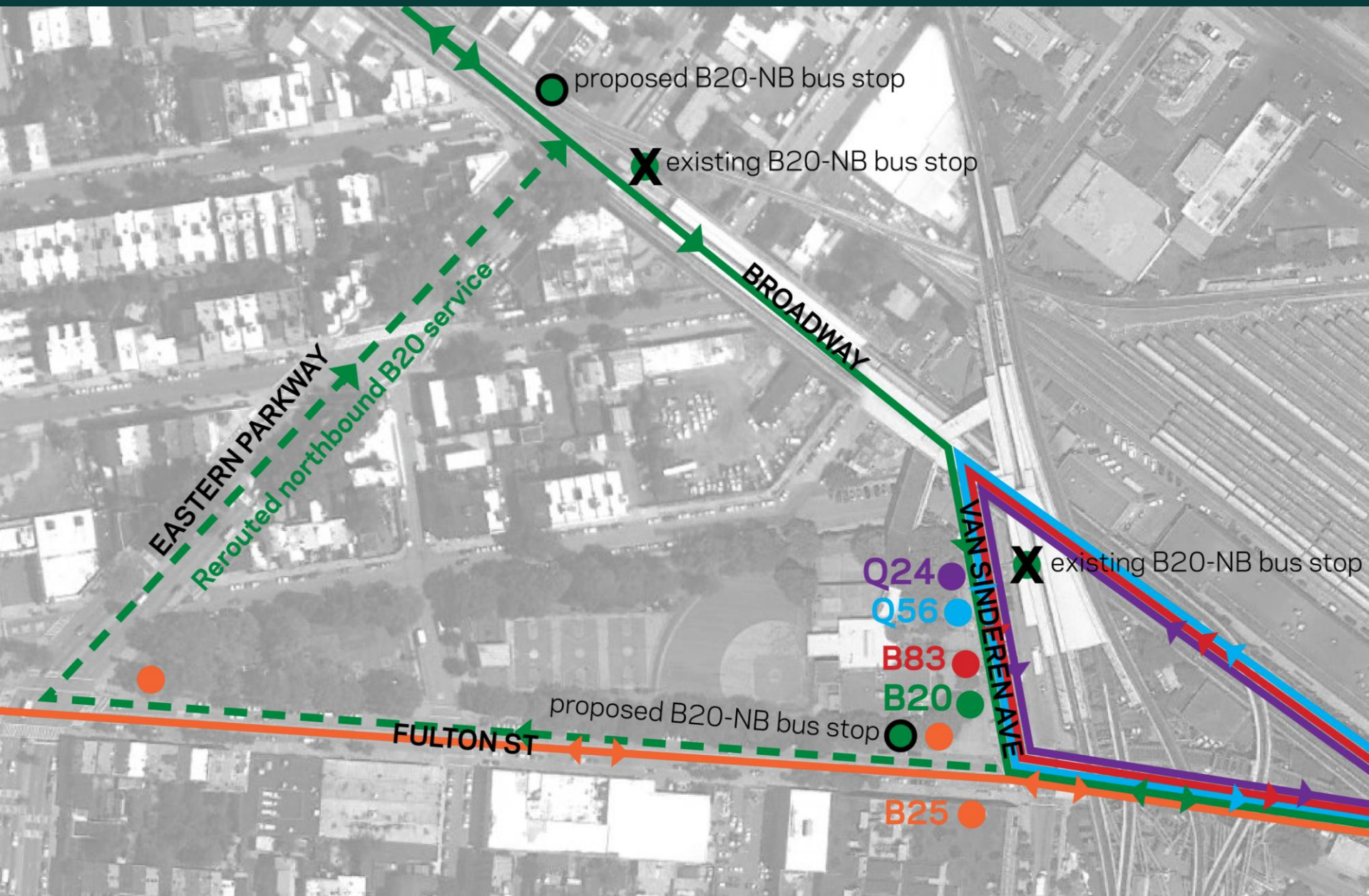
Proposed



Project benefits

- Separate bus and general traffic lanes reduce conflict and congestion
- Transfers between bus and subway can be made without crossing street
- Wider sidewalk allows for freer pedestrian movement and more room to wait for the bus
- Additional space for greenery and other amenities on wider sidewalk and median
- Designated and separate drop-off / pick-up area and NYPD parking
- Design limits livery cab U-turning
- Eliminates dual left-turning conflicts at Fulton Street

Bus Route & Stop Changes



Funding

Planning & Preliminary Design

\$800,000 (+\$200,000 local match)

Federal earmark from Congressman Ed Towns

Final Design & Construction

\$3.4 million (+\$850,000 local match)

**Federal Transit Administration (FTA)
Bus Livability Grant**

A competitive grant program that awards funding to projects that integrate public transit and community livability-related improvements

www.nyc.gov/dot



Questions or comments?

Email the project team at BroadwayJunction@dot.nyc.gov