

Borinquen Place

2013



Project Area

Marcy Ave

Brooklyn/Queens
Expwy

Keap St

Williamsburg
Bridge

Borinquen Pl

Rodney St

S.4th St

Background

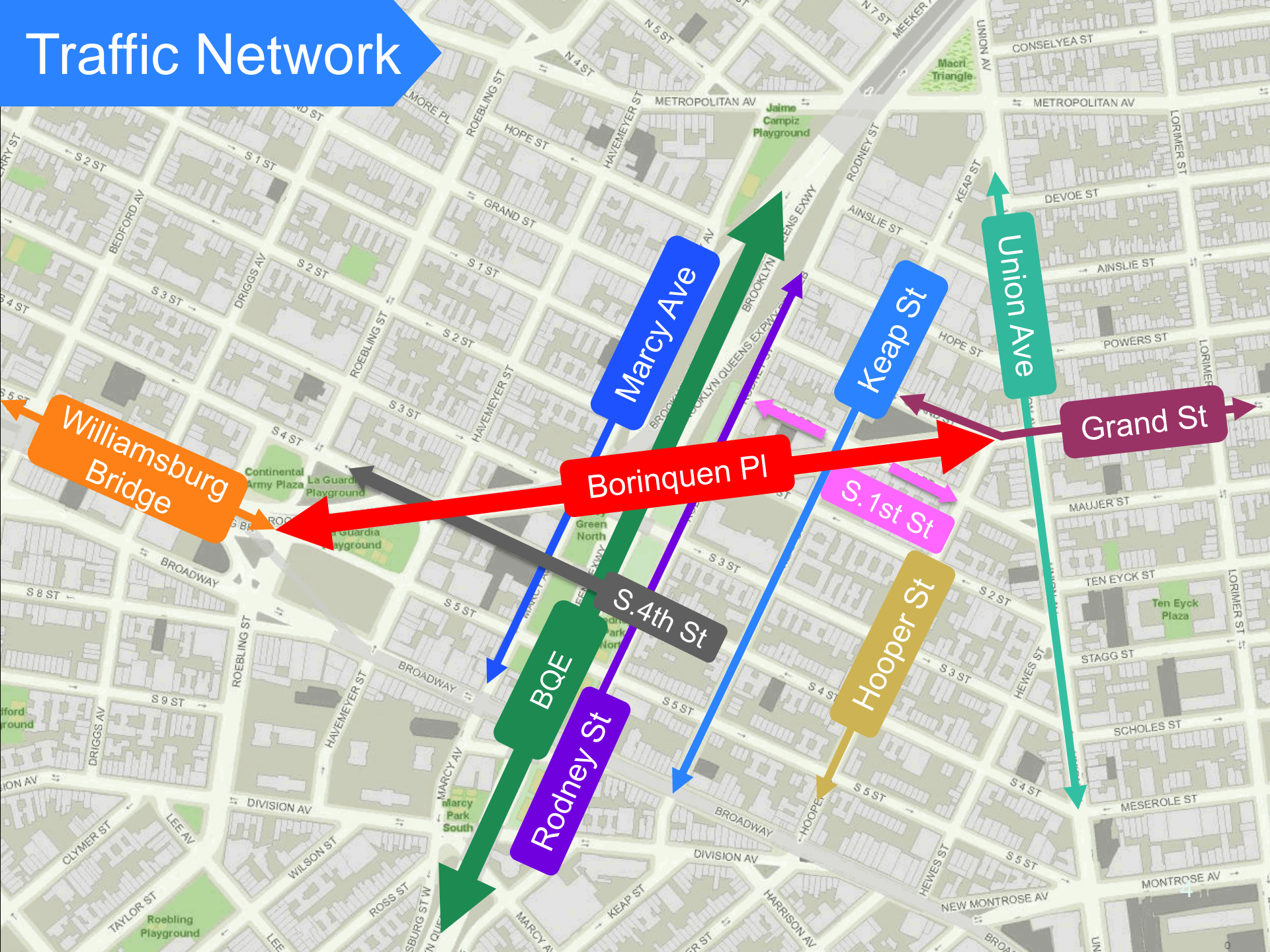
- Council Member Reyna requested a study of streetscape and safety around Borinquen
- Borinquen is a high crash corridor
- Two recent pedestrian fatalities near Keap St and Borinquen
- Bicyclist recently fatally struck on Borinquen near Rodney
- Petition from over 1500 locals requesting safety improvements



- Several parks/playgrounds around BQE cut at Marcy and Rodney
- PS 319 and PS 19 adjacent to Borinquen
- Planned Grand Street BID pedestrian safety project ends at Union Avenue
- Neighborhood seeing influx of residential and commercial development (i.e. Triangle Court Building)



Traffic Network



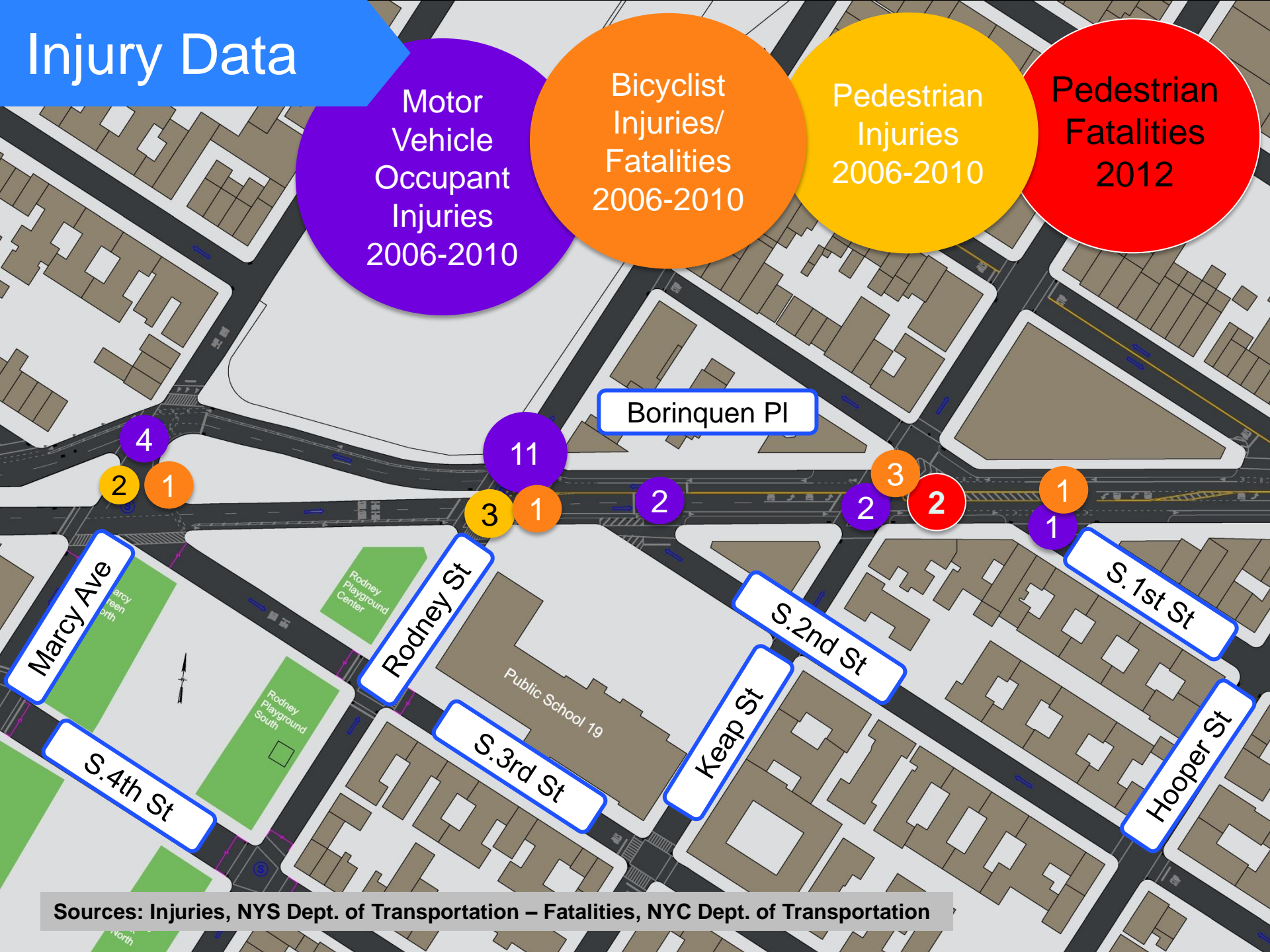
Injury Data

Motor Vehicle Occupant Injuries 2006-2010

Bicyclist Injuries/Fatalities 2006-2010

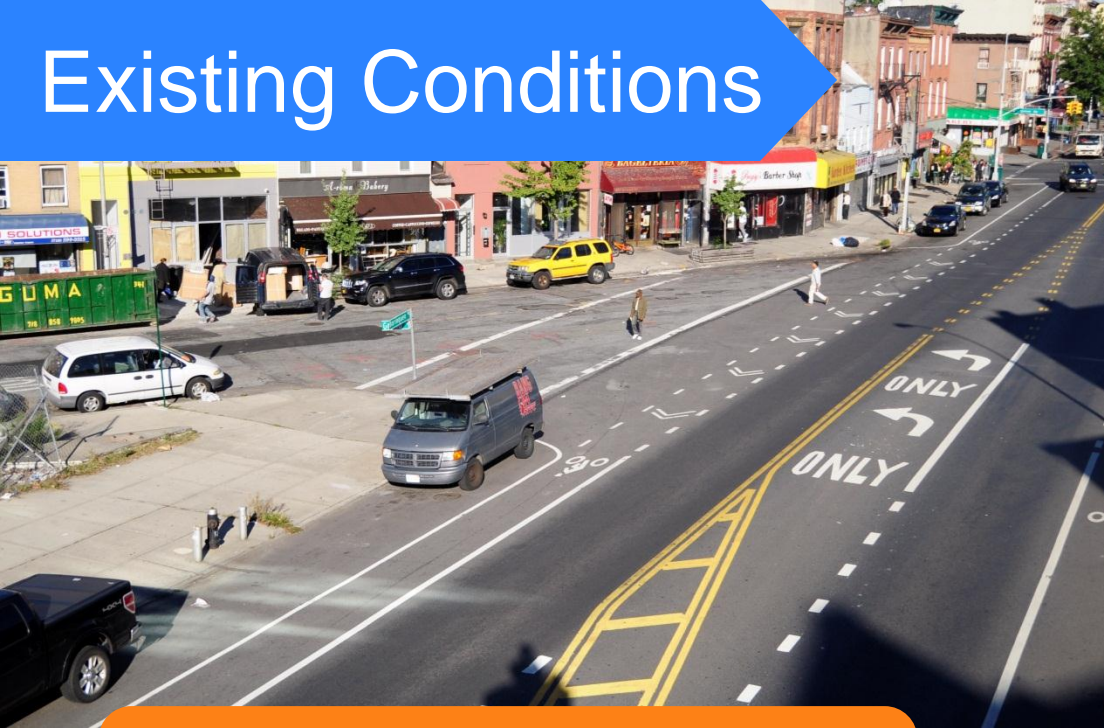
Pedestrian Injuries 2006-2010

Pedestrian Fatalities 2012



Sources: Injuries, NYS Dept. of Transportation – Fatalities, NYC Dept. of Transportation

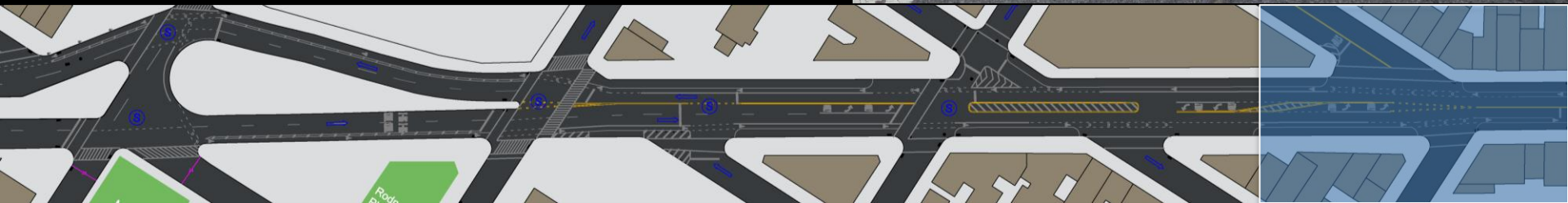
Existing Conditions



Borinquen Pl and
Grand St

Long crossing distance
130 foot crosswalk

Street angles encourages high
speed turning across crosswalk



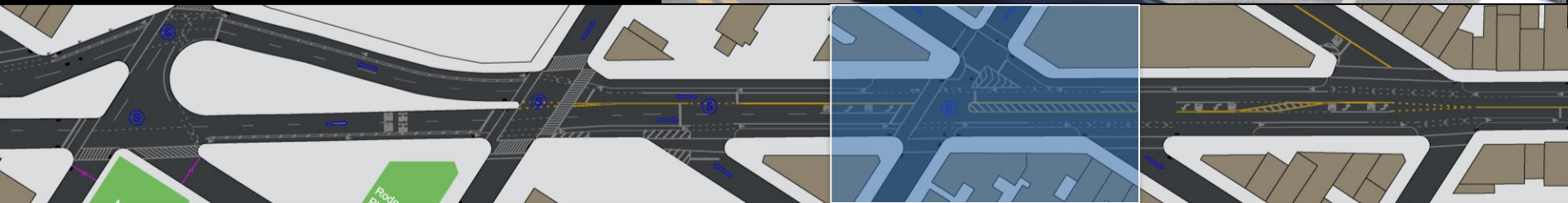
Existing Conditions

Borinquen Pl and
Keap St

Pedestrian demand
for crossing

No crosswalk

Two pedestrian
fatalities in 2012

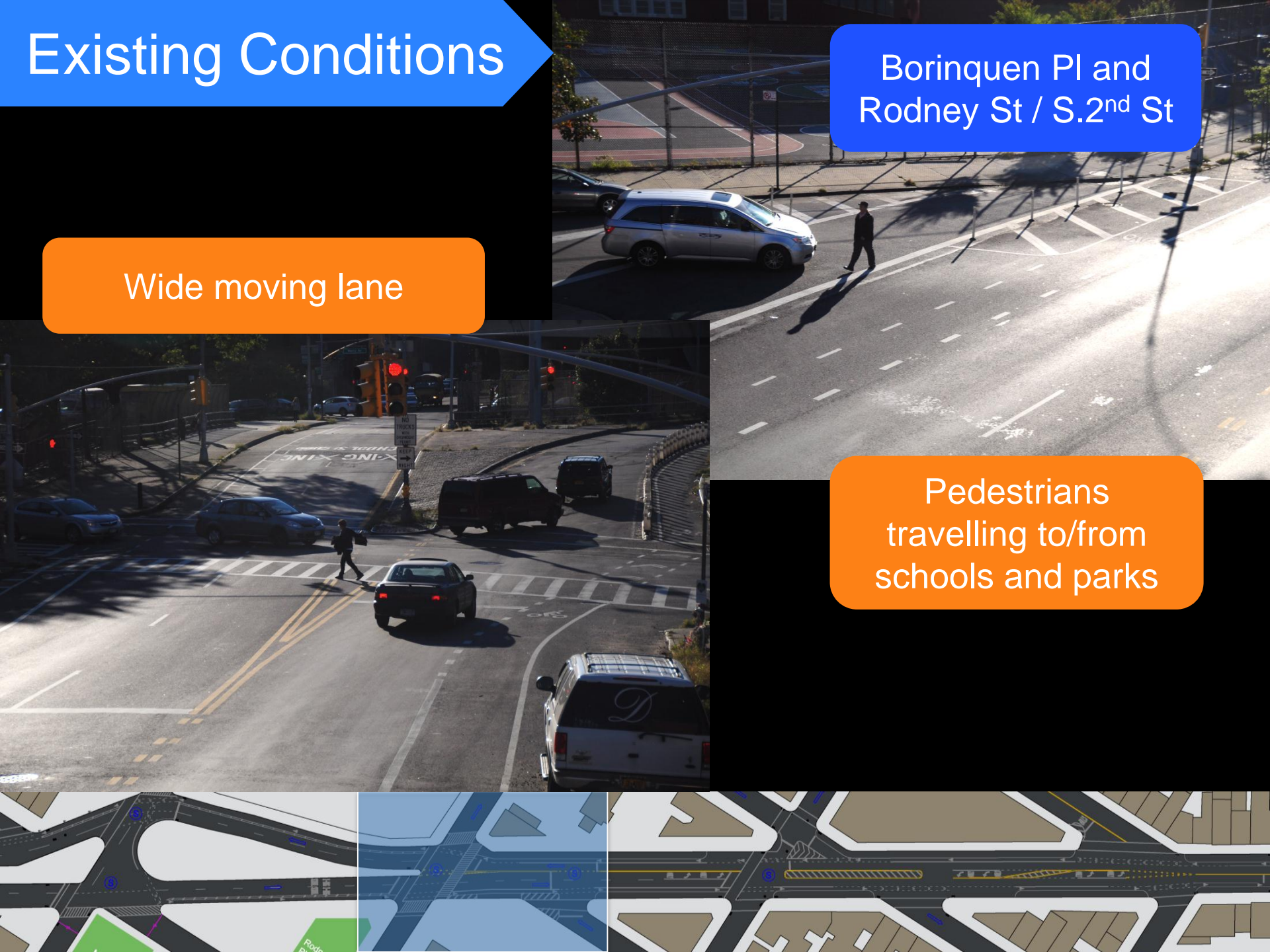


Existing Conditions

Borinquen Pl and
Rodney St / S.2nd St

Wide moving lane

Pedestrians
travelling to/from
schools and parks



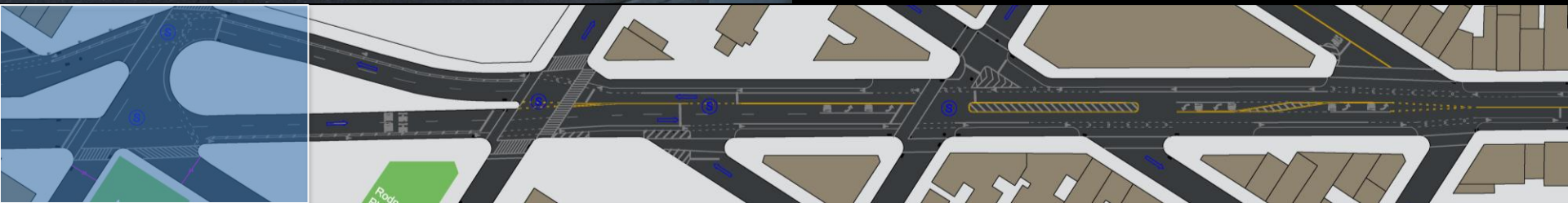
Existing Conditions

Borinquen Pl and
Marcy Avenue

Unmarked wide
intersection

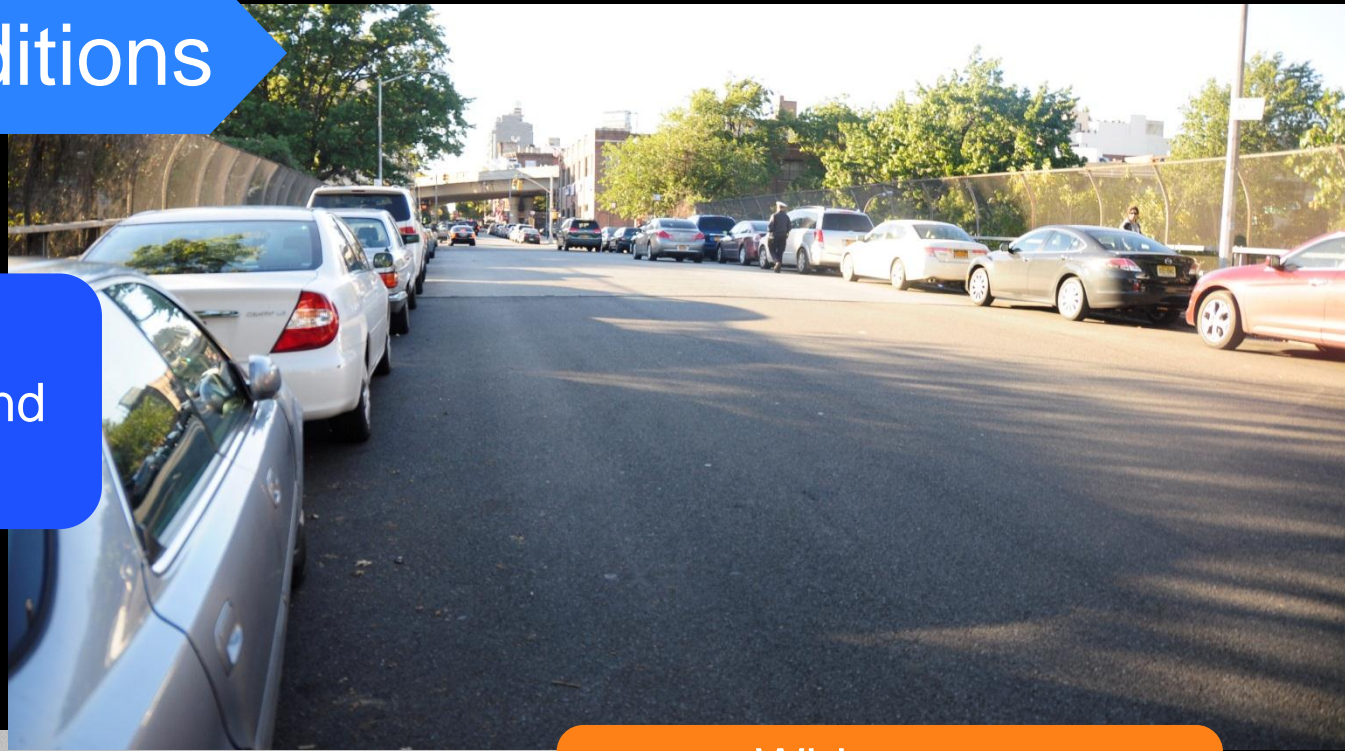


Unpredictable vehicle
movements through crosswalk

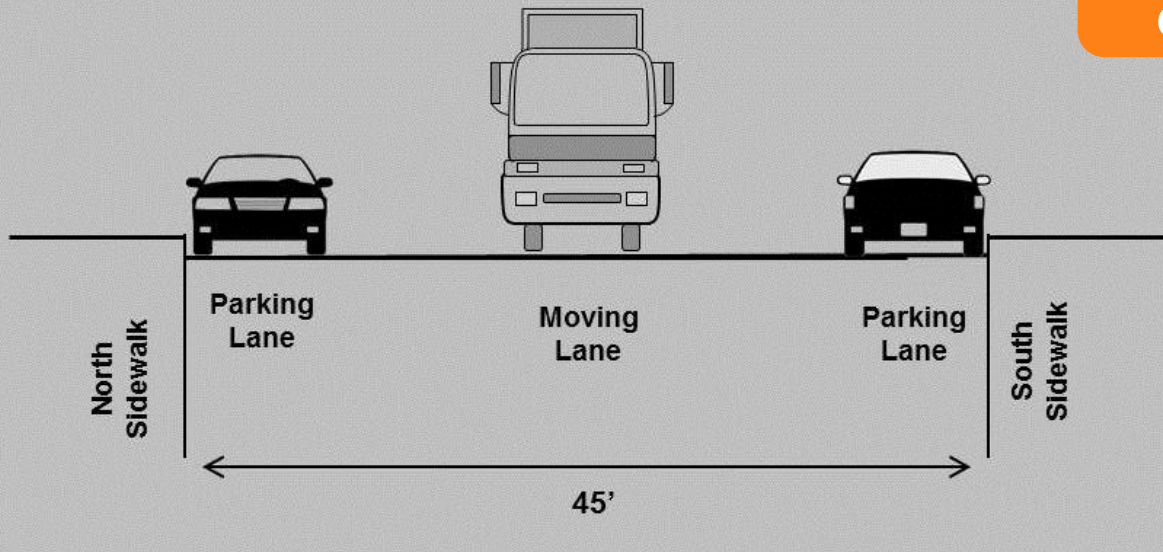


Existing Conditions

S.4th Street
between Marcy and
Rodney



Wide street
encourages speeding



Rapid Response Toolkit

- Pavement markings
- Signal modifications
- New signage
- Painted and/or textured surfaces
- Flexible delineators



Rapid Response Toolkit

Painted Sidewalk Extension Examples



Schermerhorn St., Brooklyn



Union Avenue & N.12th Street

Rapid Response Tool

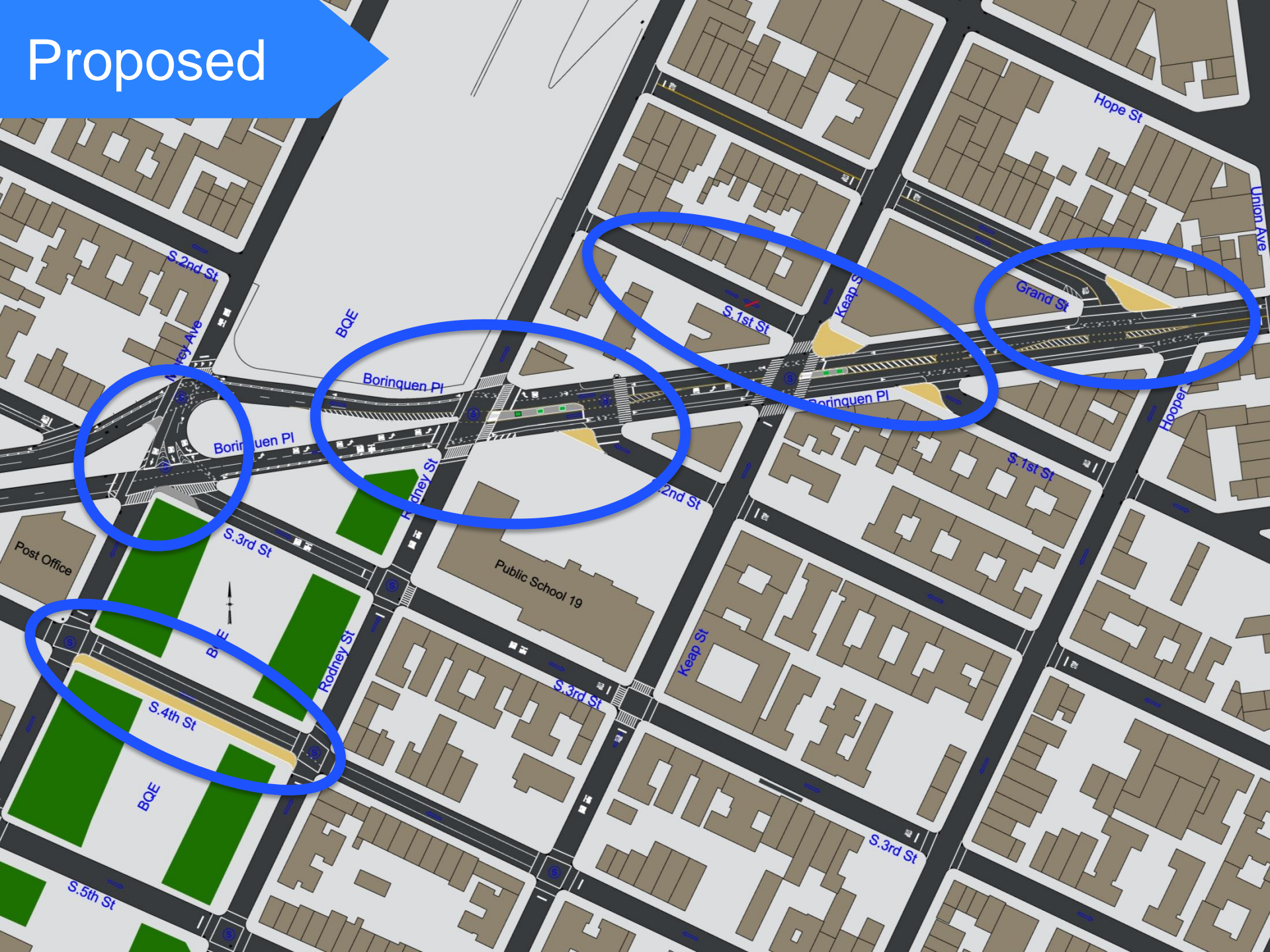
Concrete Median Examples



Southern Blvd,
Bronx

Hylan Blvd, Staten Island

Proposed



Proposed

Borinquen Pl and Grand St

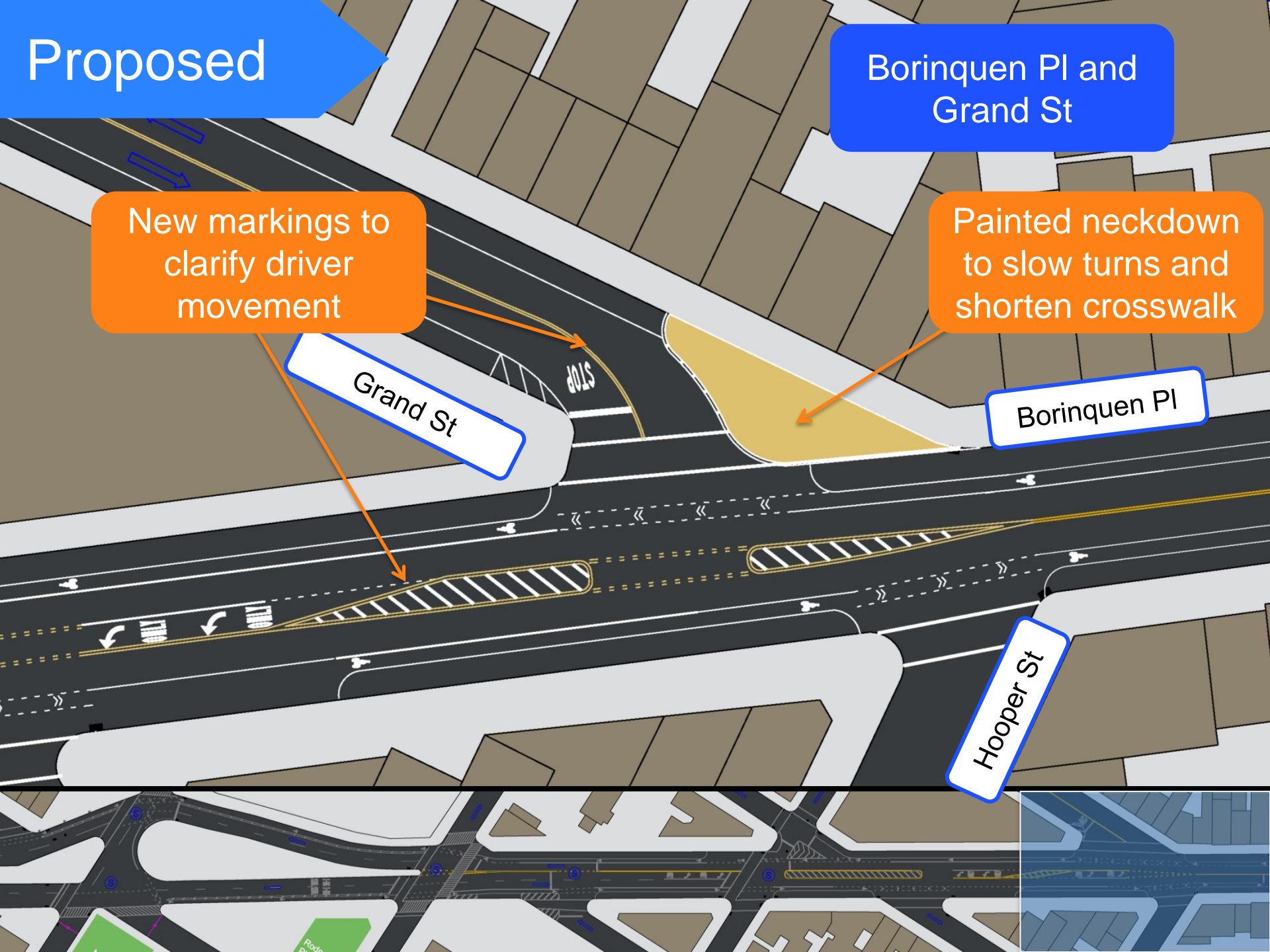
New markings to clarify driver movement

Painted neckdown to slow turns and shorten crosswalk

Grand St

Borinquen Pl

Hooper St



Proposed

Borinquen Pl and
Keap St

Keap St

Grand St

S. 1st St

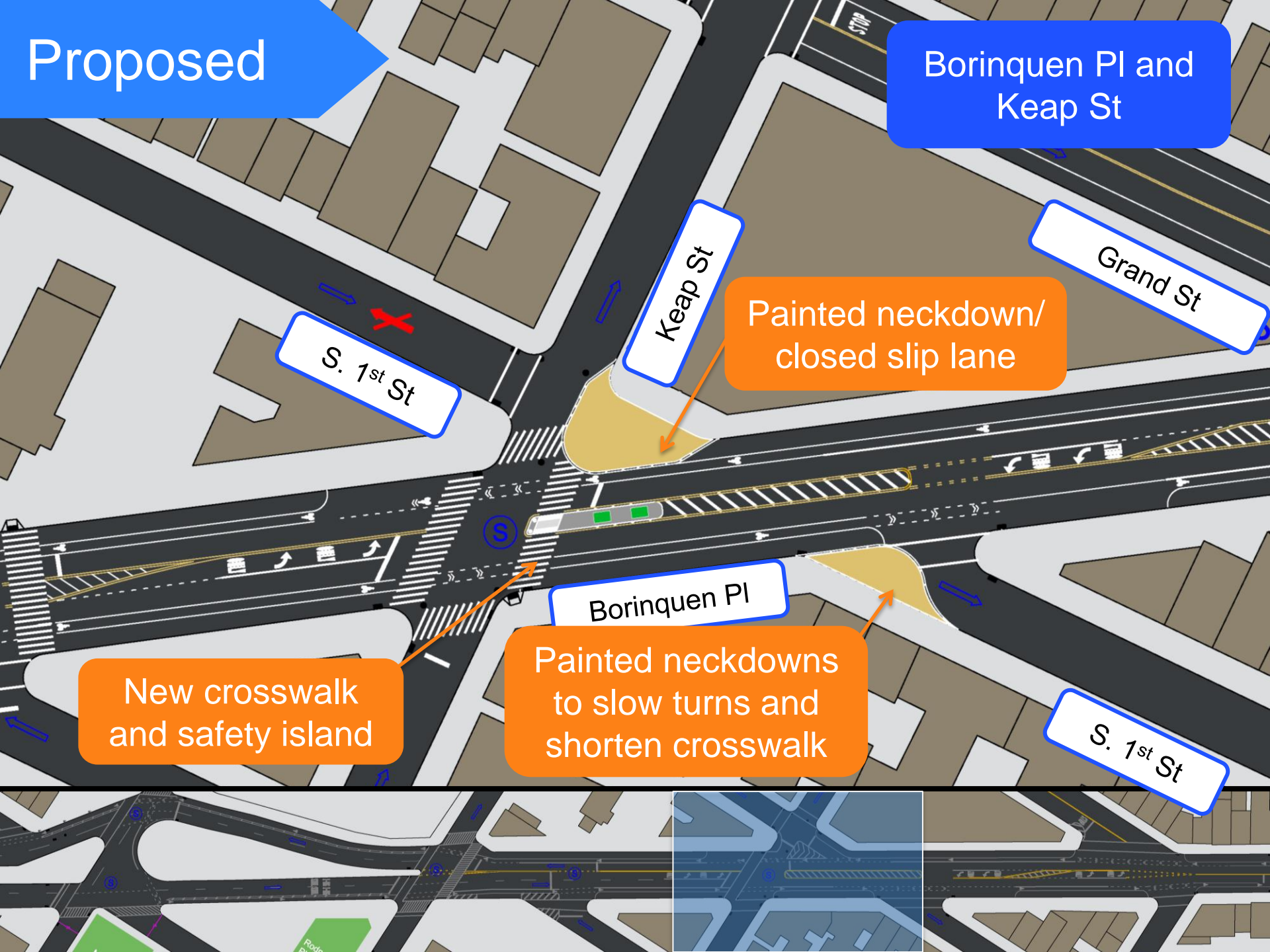
Painted neckdown/
closed slip lane

Borinquen Pl

New crosswalk
and safety island

Painted neckdowns
to slow turns and
shorten crosswalk

S. 1st St



Proposed

Pedestrian conflict created if left turn allowed immediately after right turn

Borinquen Pl and Keap St

Grand St

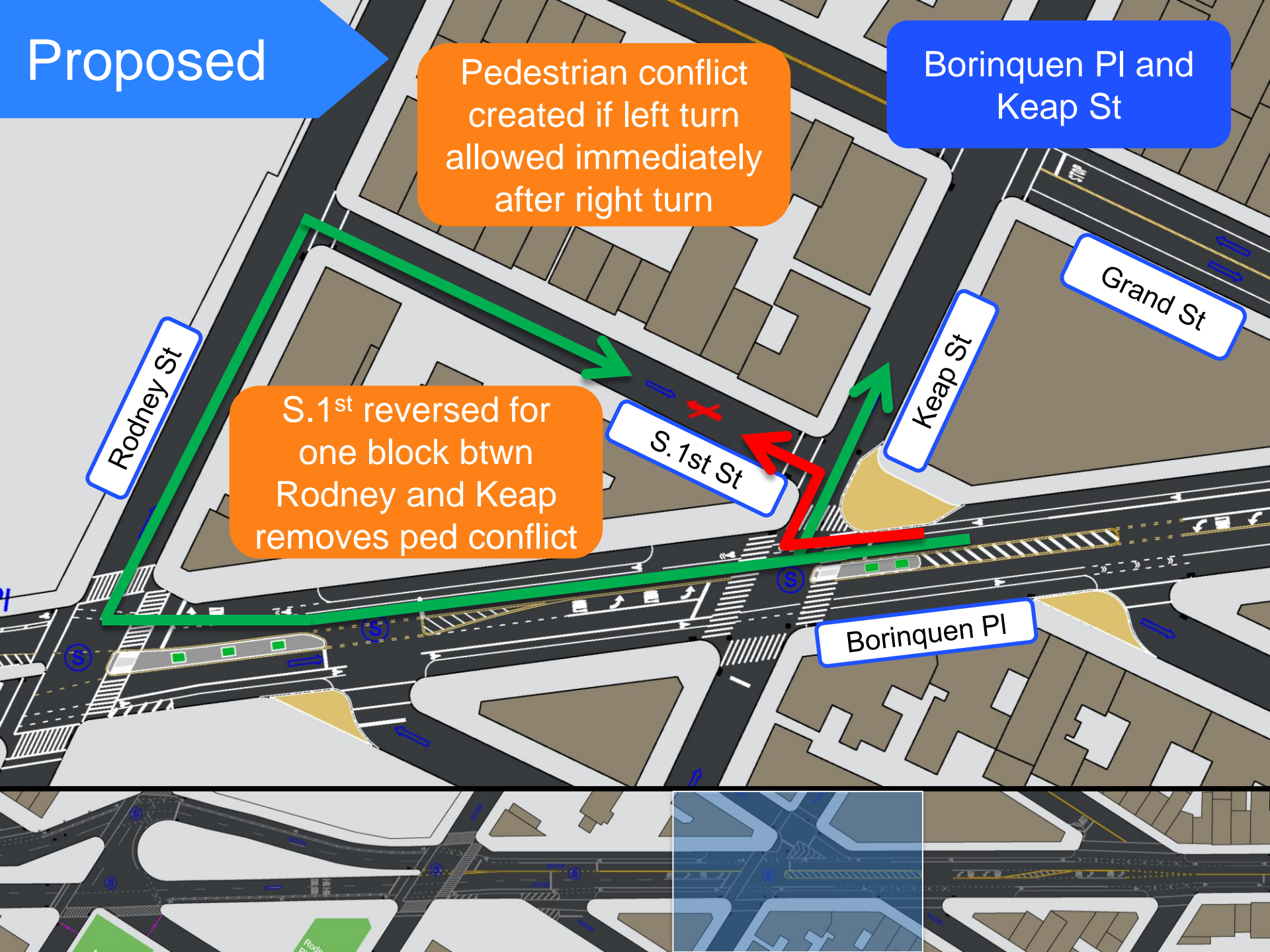
Rodney St

S. 1st reversed for one block btwn Rodney and Keap removes ped conflict

S. 1st St

Keap St

Borinquen Pl



Proposed

Borinquen Pl and
Rodney St / S. 2nd St

New markings to calm
corridor

Borinquen Pl

New right
turn lane

Safety median

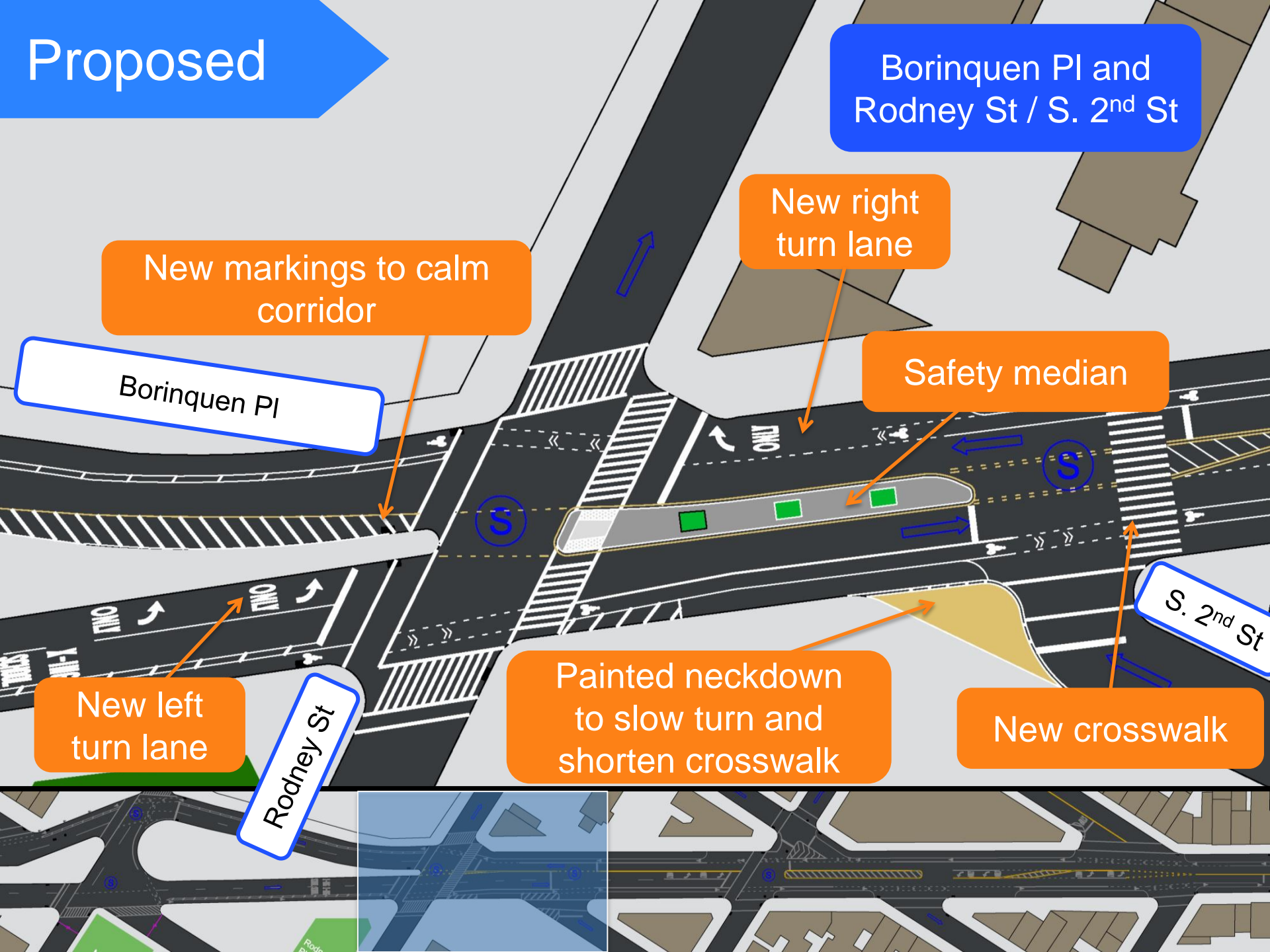
New left
turn lane

Rodney St

Painted neckdown
to slow turn and
shorten crosswalk

New crosswalk

S. 2nd St



Proposed

Borinquen Pl and
Marcy Avenue

Concrete extension to
shorten crosswalk

Marcy Ave

Borinquen Pl

New lane markings to clarify
vehicular movements

Borinquen Pl

Concrete neckdown
to straighten and
shorten crosswalk

S. 3rd St



Proposed

S.4th Street
Between Marcy and
Rodney

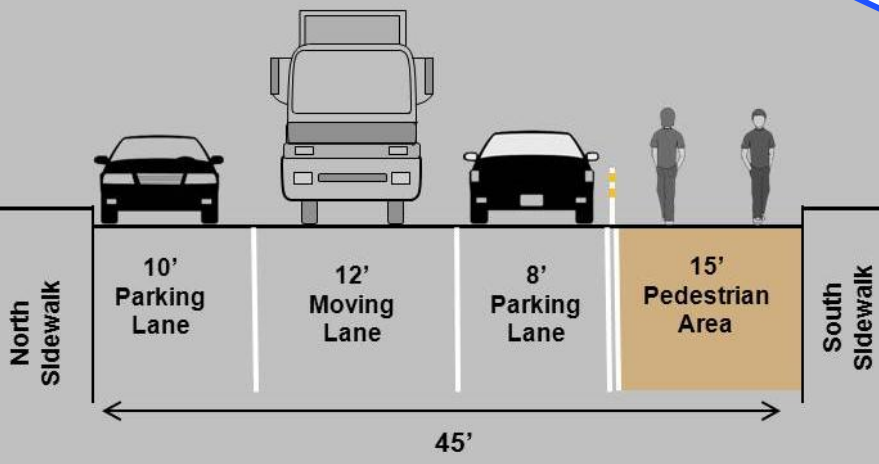
15' painted sidewalk
extension

Marcy Ave

S. 4th Street

S. 3rd Street

Rodney St



Benefits

- Improved traffic flow and circulation
- Increased pedestrian safety and comfort
- Enhanced walking environment
- Landscaping and new neighborhood amenities

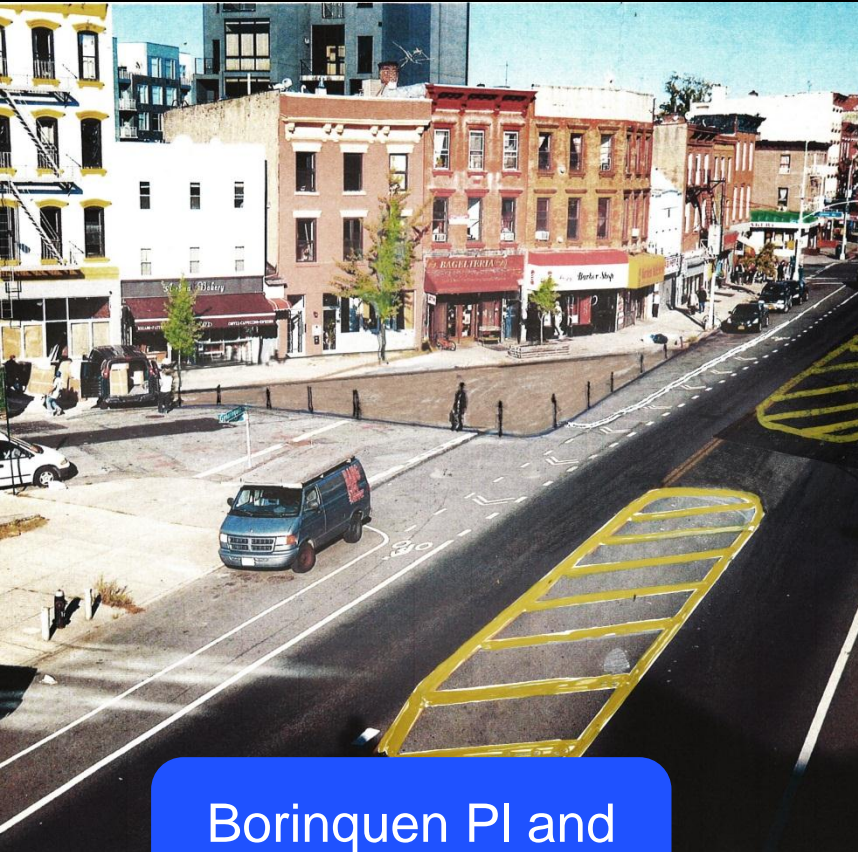


S.4th Street
between Marcy
and Rodney



Borinquen PI and
Rodney St / S. 2nd St

Summary



Borinquen Pl and
Grand St

- Construct two landscaped pedestrian safety islands on Borinquen Pl at Rodney St and at Keap St
- Build neckdowns on Borinquen Pl at S.3rd St and at Marcy Ave
- Install new painted neckdowns on Borinquen Pl at Grand St, S. 1st St, and S. 2nd St
- Install painted sidewalk extension on S.4th St between Rodney St and Marcy Ave
- Add new crosswalks across Borinquen Pl at S. 2nd St south leg and at Keap St south leg
- Close low volume slip lane at Keap St with painted neckdown
- Reverse direction of S. 1st Street between Rodney and Keap to improve intersection operations at Borinquen and Keap

www.nyc.gov/dot

Thank
You