

Lefferts Boulevard

Traffic Calming

Community Board 10 – October 4, 2012

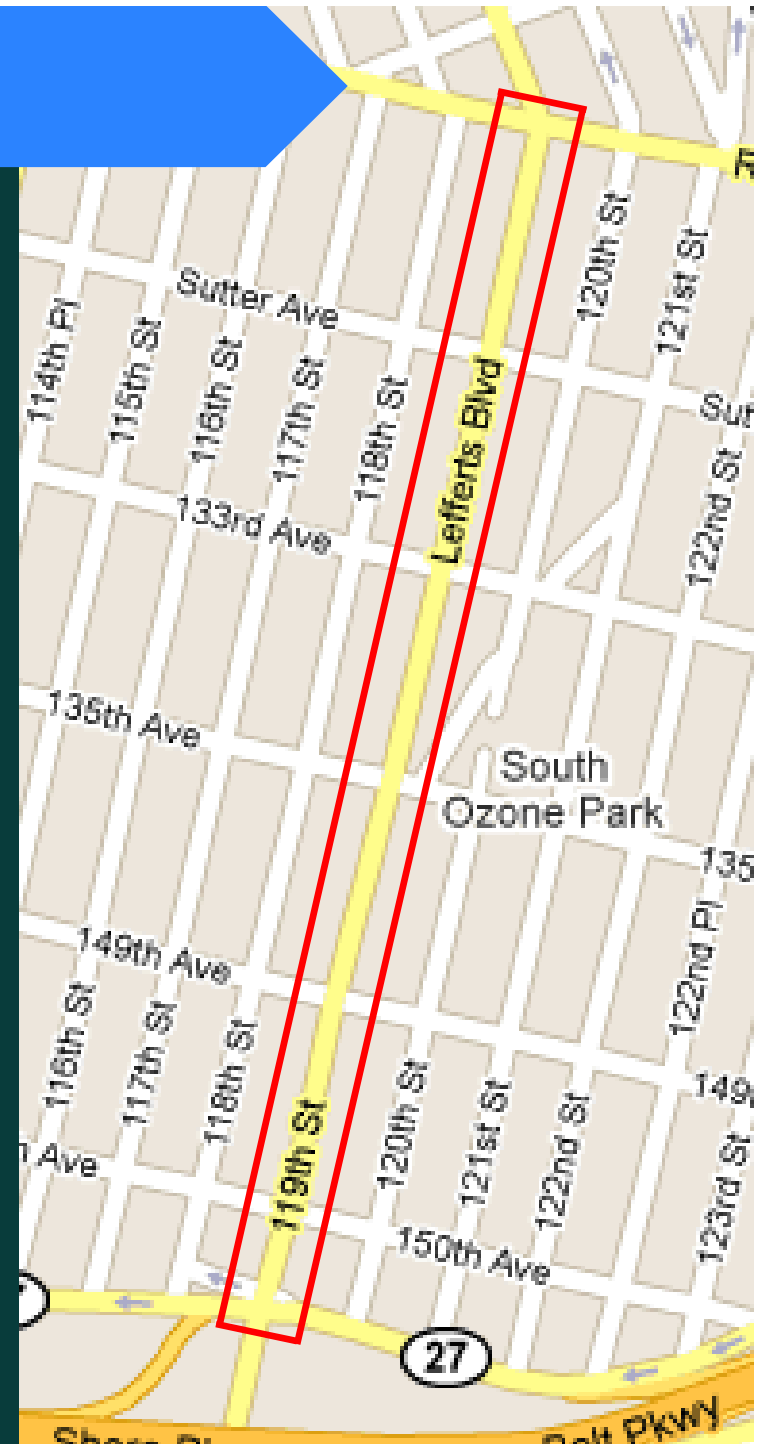
2012



Commissioner Janette Sadik-Khan New York City Department of Transportation
Office of Research, Implementation and Safety

Project Background

- High Crash Corridor
- Study limits: North Conduit to Rockaway Blvd
- Mostly residential, with commercial areas between 135th and 149th Aves
- Shore Parkway and Nassau Expressway access
- Aquaduct Racino nearby



Safety Data

Total Injuries
(Motor vehicle occupant, bicycle and pedestrian)
2006-2010

Total Fatalities
2006-2012

Total of 211 injuries from 2006-2010

5 fatalities

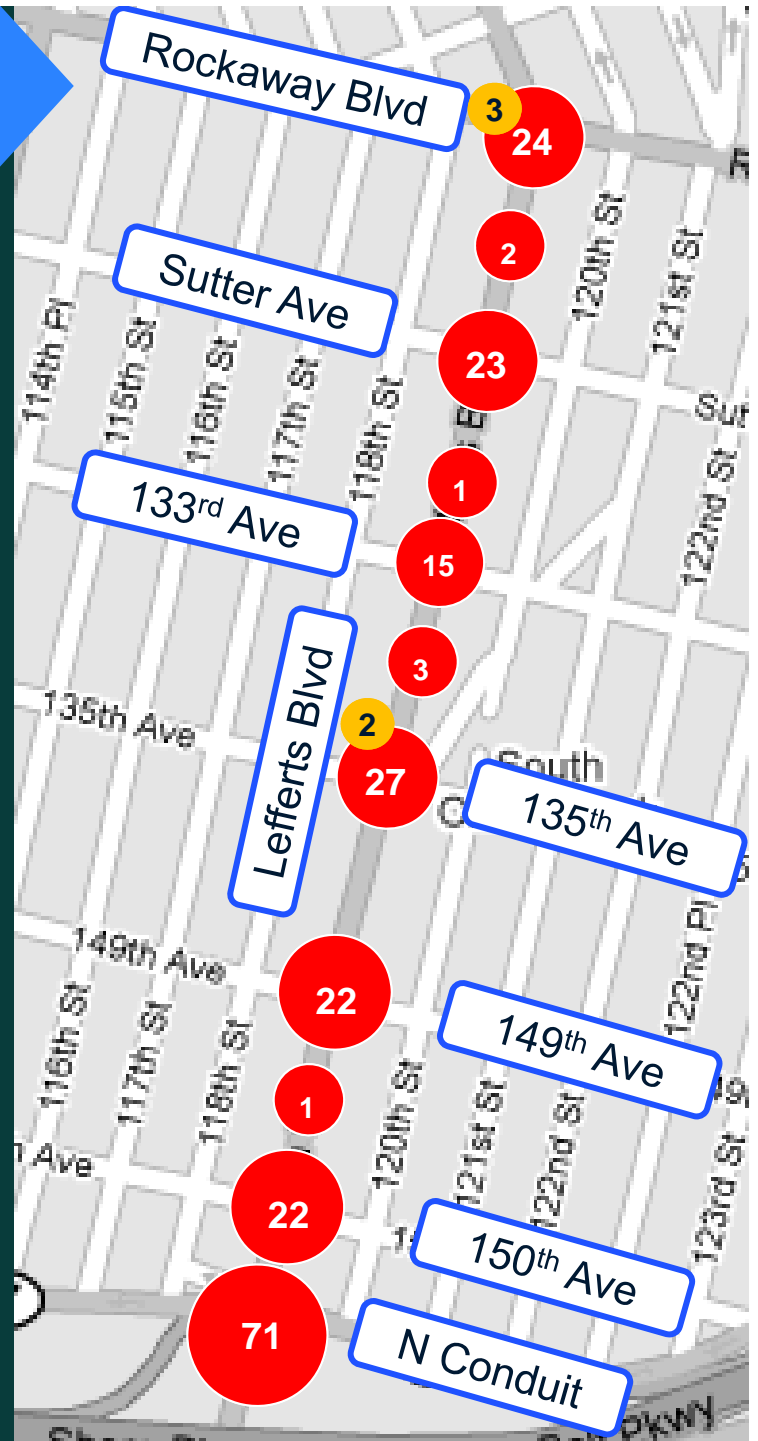
Lefferts Blvd - N Conduit Ave to Rockaway Blvd, QN
Injury Summary, 2006-2010

	Total Injuries	Avg Inj/Yr	Avg Inj/Mile/Yr
Pedestrian	18	3.6	5
Bicyclist	1	0.2	0.2
Motor Vehicle Occupant	192	38.4	54.1
Total	211	42.2	59.5

Fatalities, 01/01/2006-9/24/2012: **5**

Source: Injuries: NYS Dept. of Transportation
Fatalities: NYC Dept. of Transportation

Pedestrian:	4
Bicyclist:	0
Motor Vehicle Occupant:	1



Need: Why Lefferts Blvd?

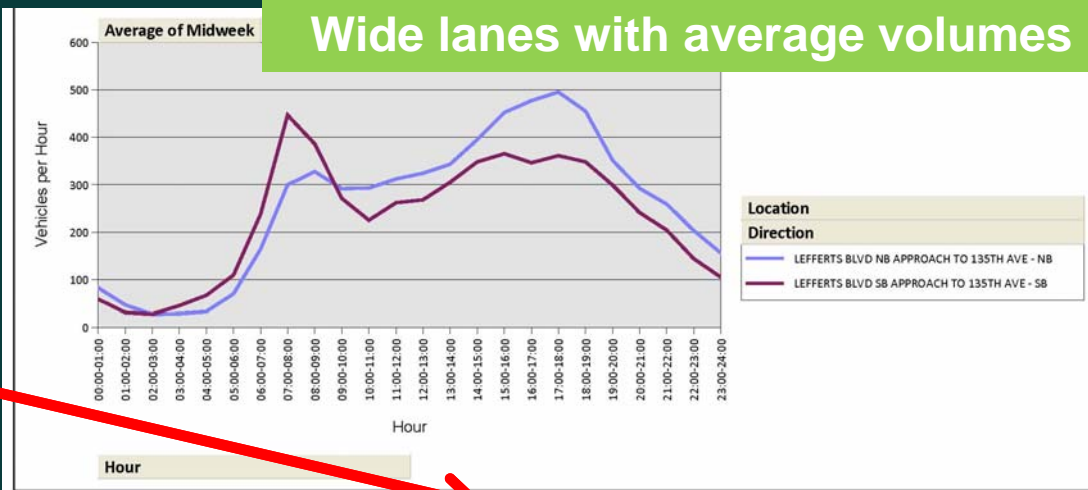
Long crossing distances



70 % of vehicles traveling over speed limit



Wide lanes with average volumes

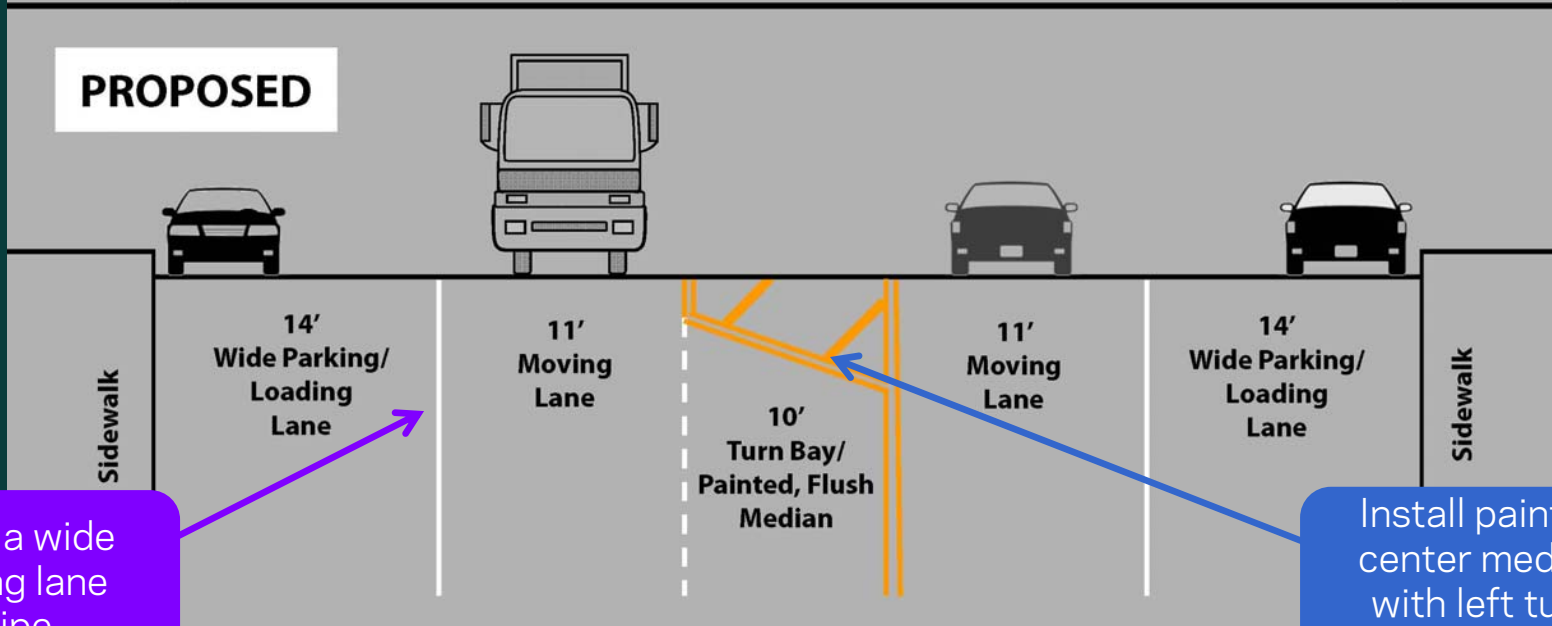
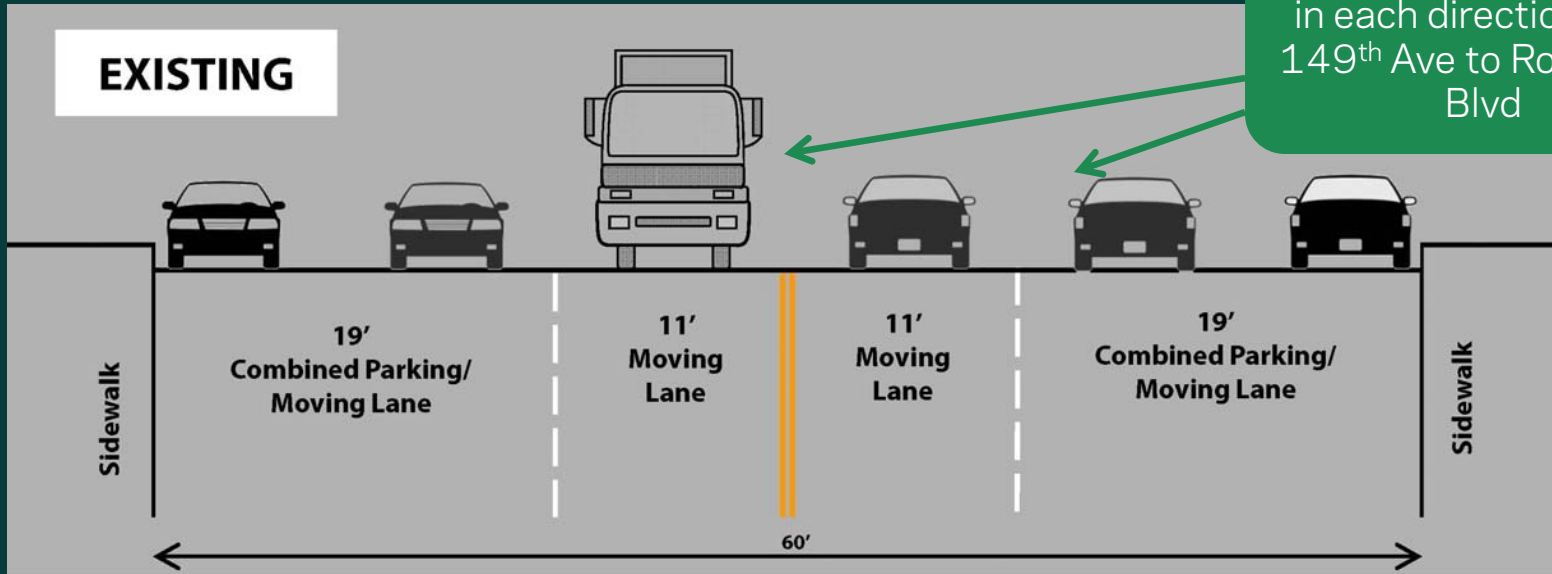


Volumes for Lefferts Blvd and 135th St, peak at 495

Location	Direction	Volume	Hour	Start Week	End Week	Mid-Week ADT
LEFFERTS BLVD NB APPROACH TO 135TH AVE	NB	495	17:00-18:00	1/23/2012	2/6/2012	6,169.67
LEFFERTS BLVD SB APPROACH TO 135TH AVE	SB	453	07:00-08:00	1/23/2012	2/6/2012	5,576.67

Proposal

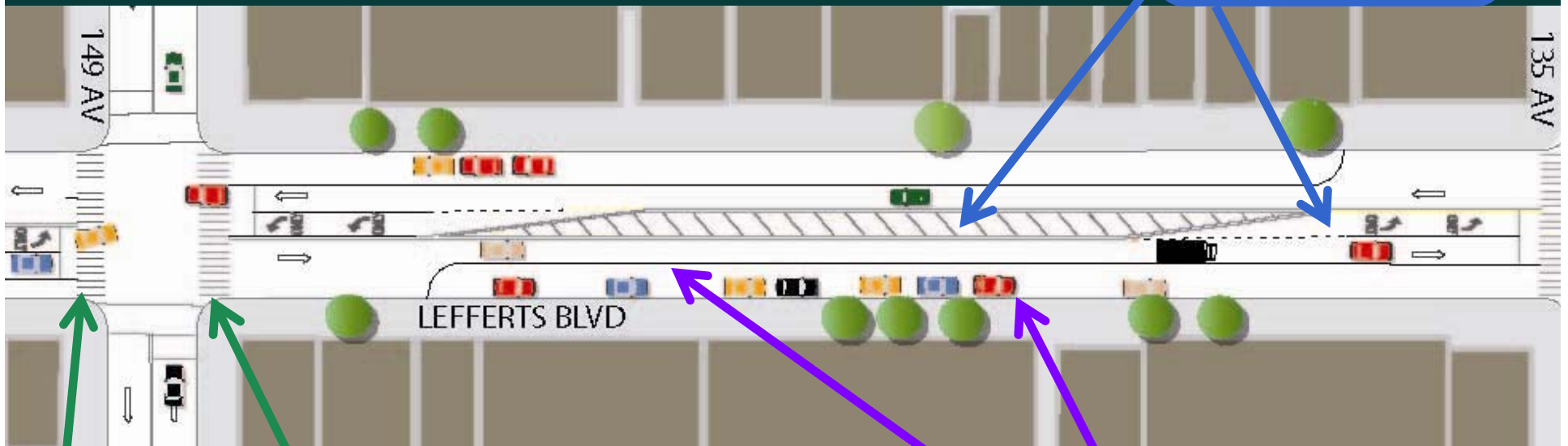
Remove one travel lane in each direction from 149th Ave to Rockaway Blvd



Install a wide parking lane stripe

Install painted center median with left turn bays

Proposal Details - 149th Ave to 135th Ave



Install painted center median with left turn bays

Upgrade crosswalks on Lefferts Blvd to high visibility

Install a wide parking lane stripe

Before and After Racino Volumes Analysis

Before and After Racino Construction Peak Hour Volumes

Lefferts Blvd from Rockaway Blvd to N Conduit WEEKDAY				
Intersection	Location	Before Peak Volume (Nov 2010)	After Peak Volume (Feb 2012)	Percent Change
Lefferts Blvd & 135th	NB Approach to 135th	490	495	1%
	SB Approach to 135th	551	453	-18%
Lefferts Blvd & N Conduit	WB Slip to Lefferts	123	144	17%
	SB Approach to N Conduit	820	679	-17%
Lefferts & Rockaway Blvd	NB Approach to Rockaway	418	430	3%
	SB Approach to Rockaway	331	360	9%
	SB Average	567	497	-12%
	NB Average	454	463	2%

Lefferts Blvd from Rockaway Blvd to N Conduit WEEKEND				
Intersection	Location	Before Peak Volume (Nov 2010)	After Peak Volume (Feb 2012)	Percent Change
Lefferts Blvd & 135th	NB Approach to 135th	449	476	6%
	SB Approach to 135th	418	399	-5%
Lefferts Blvd & N Conduit	WB Slip to Lefferts	121	173	43%
	SB Approach to N Conduit	510	525	3%
Lefferts & Rockaway Blvd	NB Approach to Rockaway	416	418	0%
	SB Approach to Rockaway	351	377	7%
	SB Average	426	434	2%
	NB Average	433	447	3%

Delay Analysis

Lefferts Boulevard and 135th Street

	Delay/Level of Service			
	Existing		Proposed	
	AM	PM	AM	PM
Eastbound - 135th Ave	13.0/B	13.7/B	13.0/B	13.7/B
Westbound - 135th Ave	14.3/B	14.8/B	14.3/B	14.8/B
Northbound - Lefferts Blvd	9.8/A	11.1/B	10.8/B	14.2/B
Southbound - Lefferts Blvd	10.1/B	10.7/B	11.7/B	12.3/B
Intersection	10.9/B	11.7/B	11.9/B	13.6/B

Benefits of Proposal

- Reduces speeding and calms traffic
- Provides safer pedestrian crossings
- Creates simpler, safer turns



Proposed Conditions: Linden Blvd, Brooklyn

Questions?

Thank
You

Contact:

Queens Borough Commissioner's Office at gbc@dot.nyc.gov or 212-839-2510