

Jewel Avenue and 69th Road

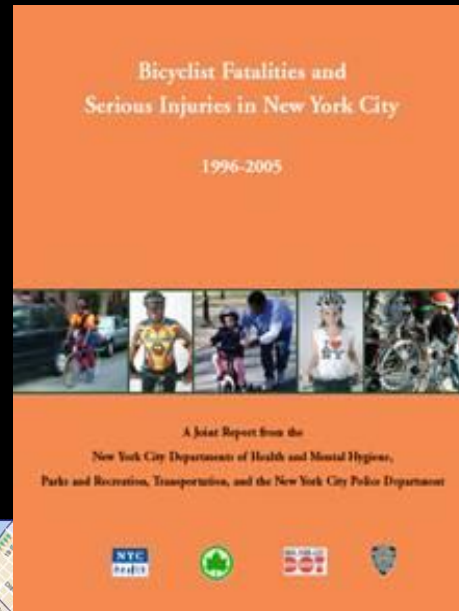
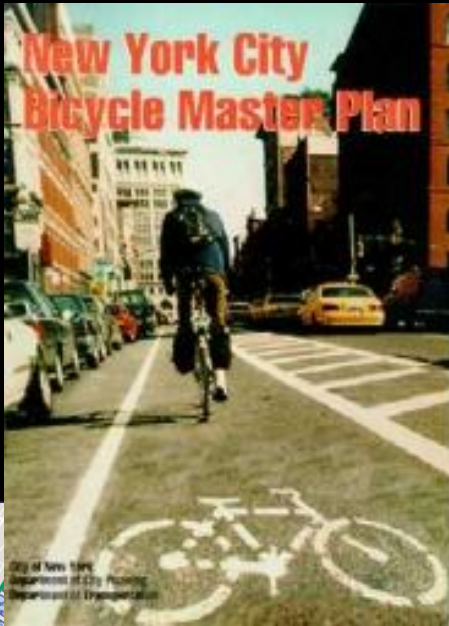
September



Commissioner Janette Sadik-Khan, New York City Department of Transportation
Draft bicycle plan requested by CB 8 on February 29, 2012 prepared by Pedestrian Projects Group

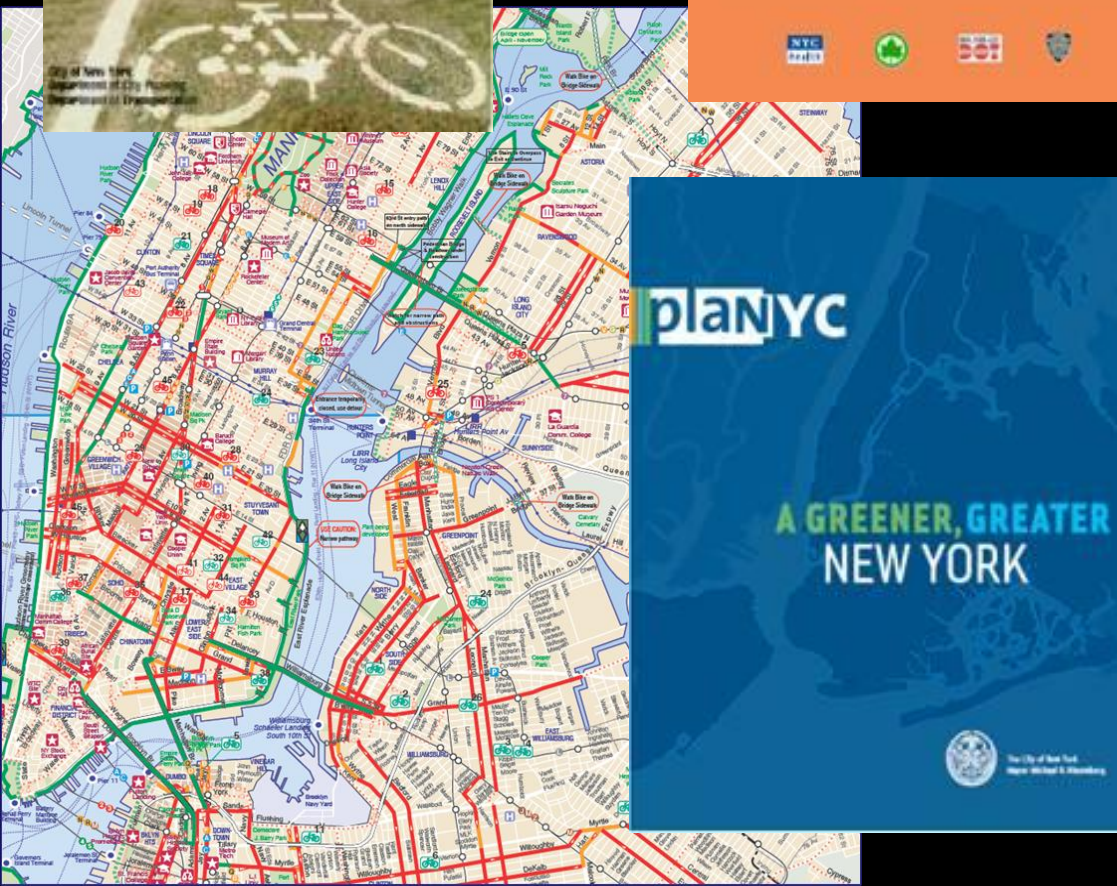


NYC Cycling Background



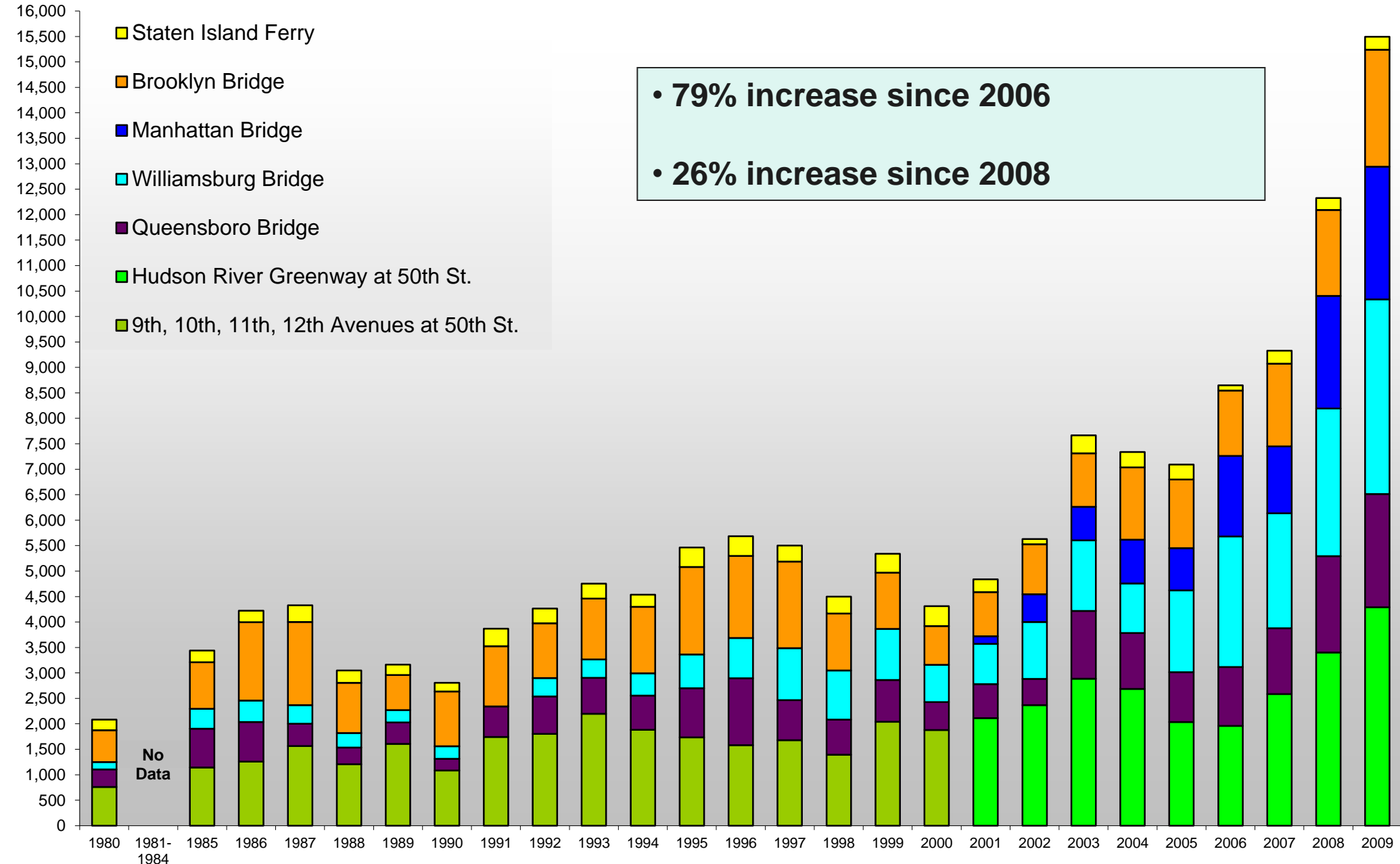
Sustainable Streets
Safety
Mobility
World Class Streets
Infrastructure
Greening
Global Leadership
Customer Service
**Strategic Plan
for the New York City
Department of
Transportation
2008 and Beyond**

- 280+ miles of bike routes installed in last 5 years
- 79% increase in commuter cycling (2006-2009)
- 15+ lane miles of on-street protected bicycle paths



Ridership Rates

New York City Cyclist Counts at Selected Commuter Locations Weekday, 7AM to 7PM, 1980-2009



Project Background



Rendering of Pedestrian Improvements previously supported by CB 6 and 8
Improvements scheduled for Fall 2012

Community Board 8 requested a draft plan of cyclist improvements

Project Location



MEADOW LAKE

Brooklyn-Queens Greenway

Park Drive E Intersection

VWE Off-ramp

BASEBALL FIELDS

GCP WB On-ramp

GCP Off-ramp to 69th Rd

VWE On-ramp

69th Road

GCP Off-ramp to Jewel Ave

Jewel Avenue

GCP EB On-ramp

Grand Central Parkway

Van Wyck Expressway

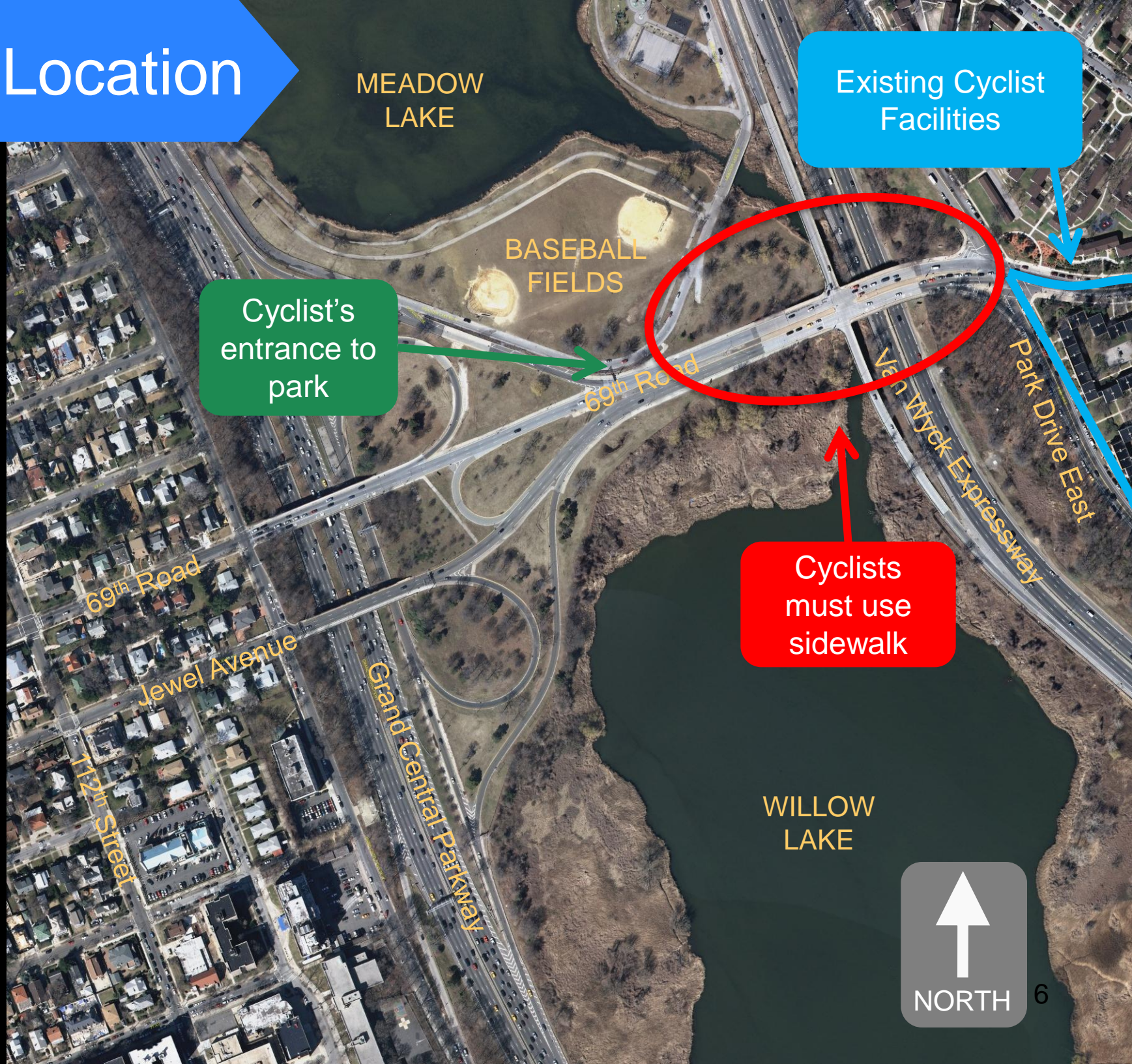
Park Drive East

WILLOW LAKE



5

Project Location



MEADOW LAKE

Existing Cyclist Facilities

BASEBALL FIELDS

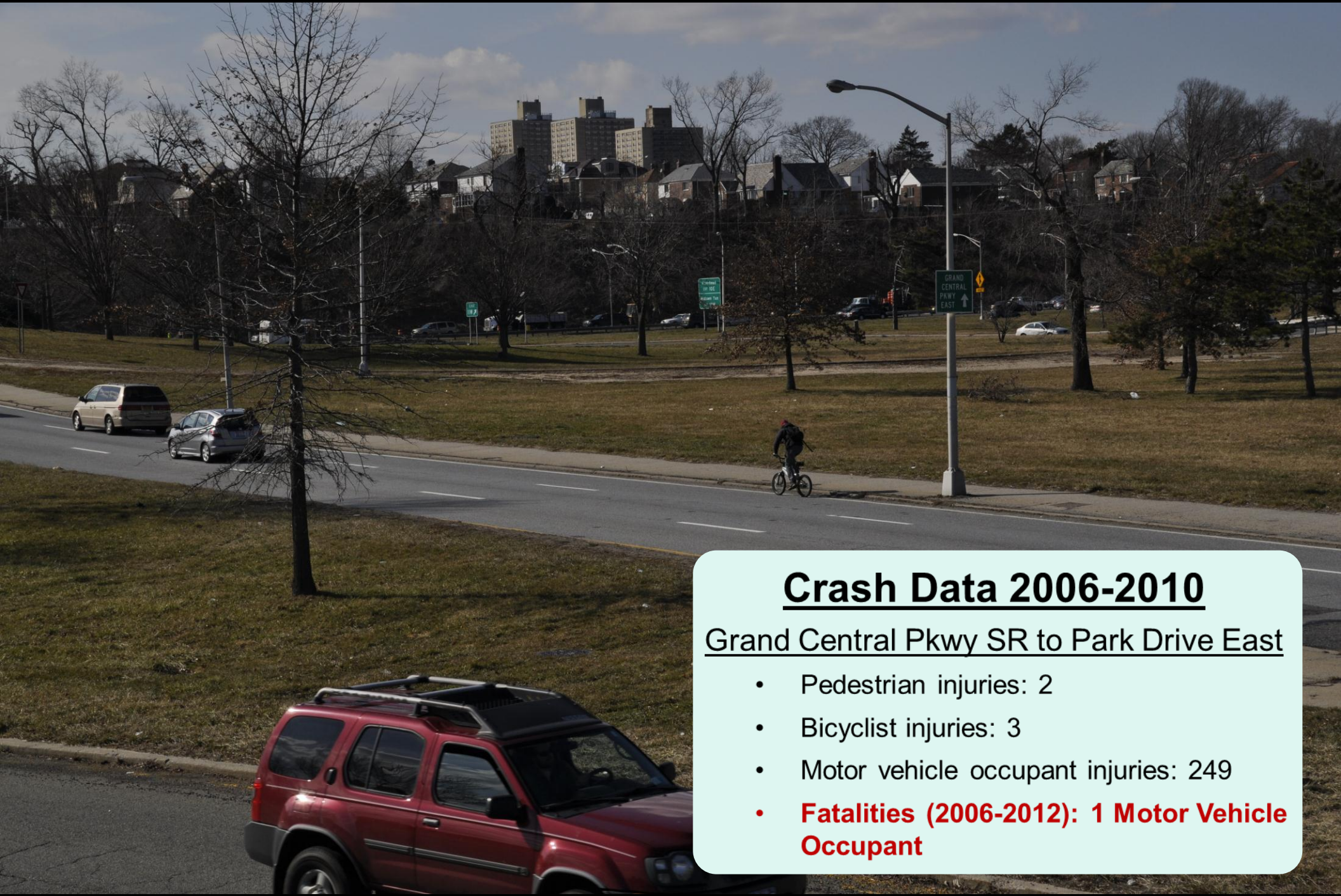
Cyclist's entrance to park

Cyclists must use sidewalk

WILLOW LAKE



Crash Data



Crash Data 2006-2010

Grand Central Pkwy SR to Park Drive East

- Pedestrian injuries: 2
- Bicyclist injuries: 3
- Motor vehicle occupant injuries: 249
- **Fatalities (2006-2012): 1 Motor Vehicle Occupant**



Pre-Pedestrian Improvements

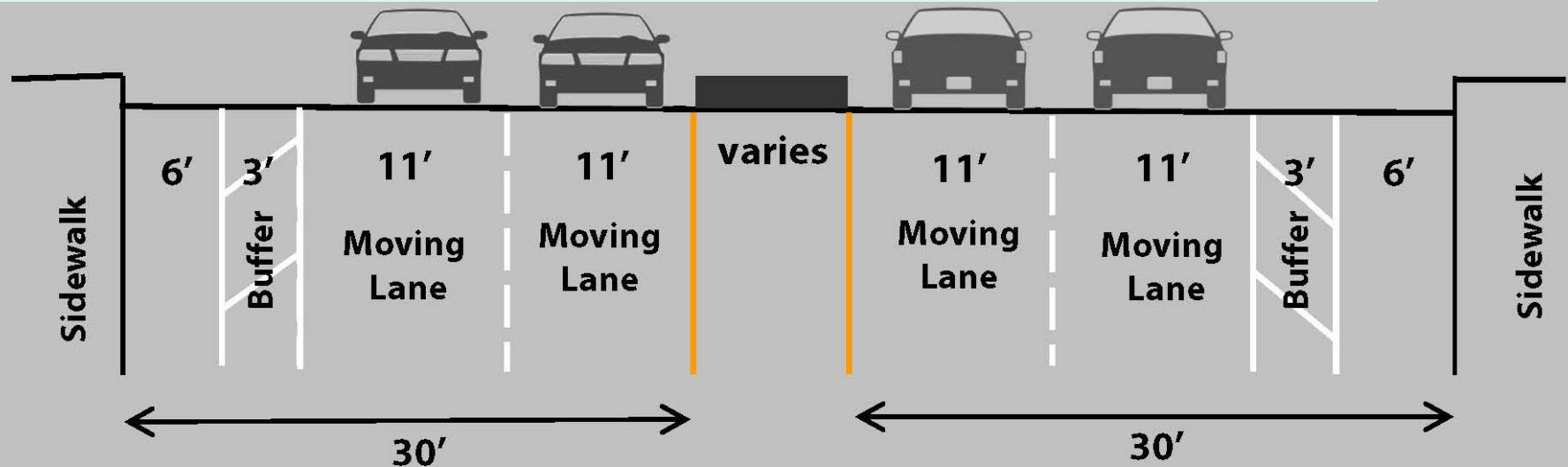
JEWEL AVE LOOKING WEST



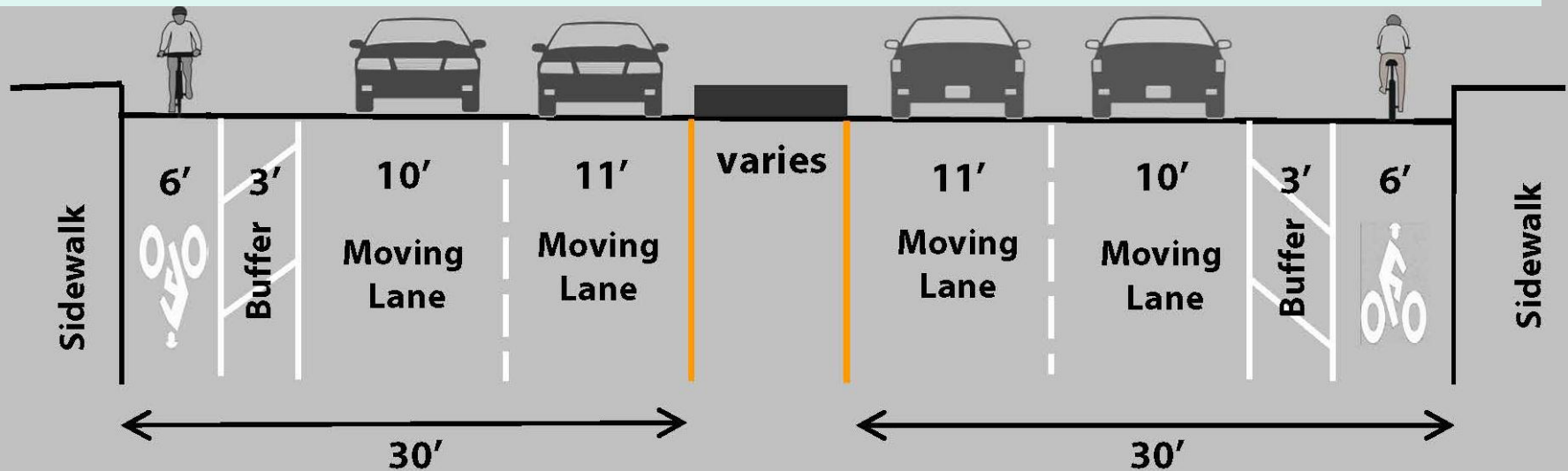
JEWEL AVE LOOKING EAST

Proposed Configuration

Pedestrian Improvements implemented fall 2012



The new improvements with bicycle accommodation



Project Summary



Bicycle accommodations would include:

Striped bicycle lanes on westbound 69th Rd and eastbound Jewel Ave

Shared on-street route with bicycle symbols on Jewel Ave/69th Road between Park Drive East and the Van Wyck Expressway

Questions?

Thank
You