

Bartel Pritchard Square

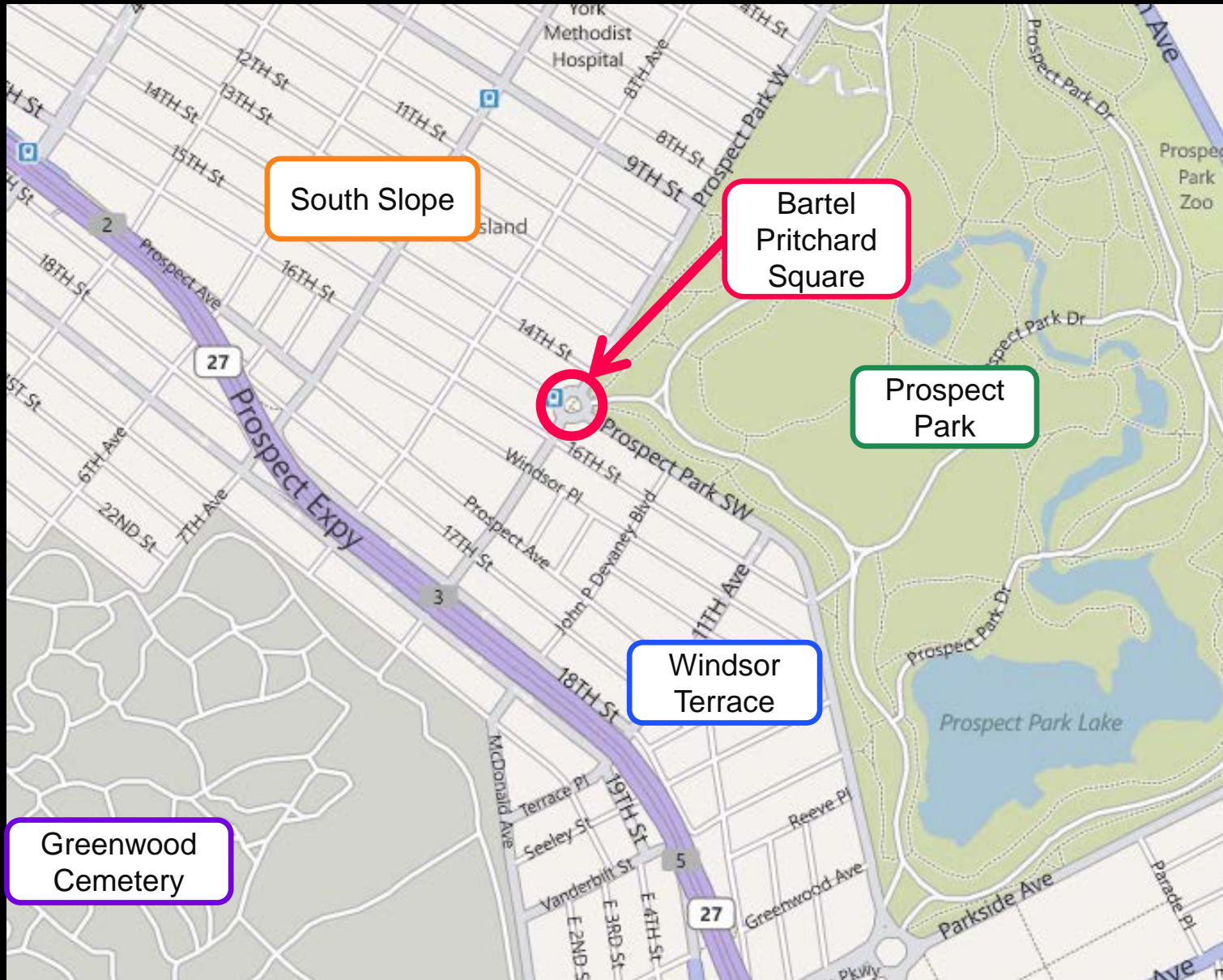
Pedestrian Improvements

June
2012



Commissioner Janette Sadik-Khan, New York City Department of Transportation
Presented by the Pedestrian Projects Group, June 21, 2012 to Community Boards 6 & 7

South Slope & Windsor Terrace



Background

Community Request

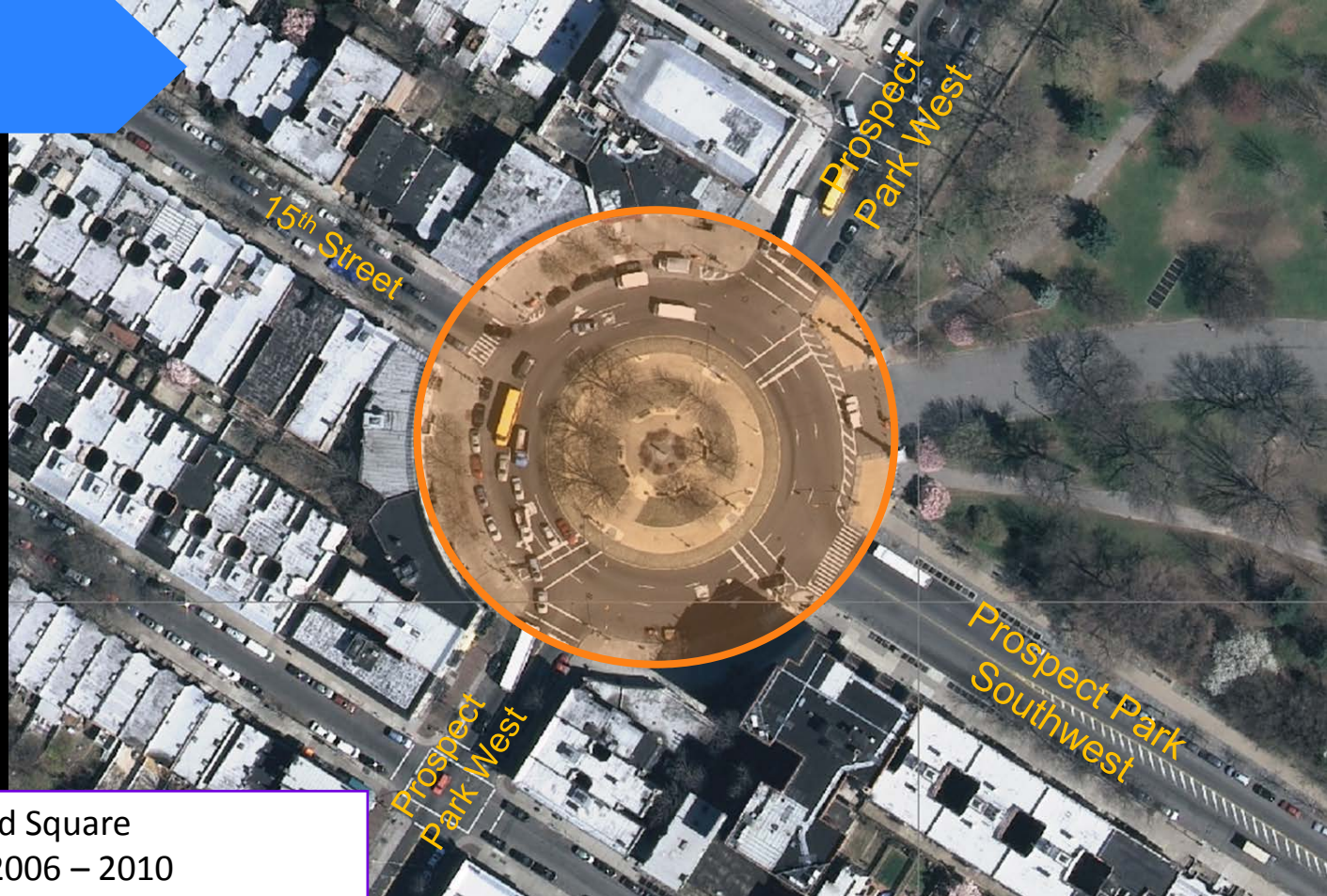
- Community Boards 6 & 7 requested improvements to the circle
- Community letters and petition requesting safety improvements

Pedestrian Safety Issues

- Problem crosswalk at 15th St
- Lack of crosswalks to the center park
- Unclear lane assignments and excessive roadway width



Focus Area



Bartel Pritchard Square
Injury Summary 2006 – 2010

	Total Injuries	Average Injuries/Yr
Pedestrian	5	1
Bicyclist	0	0
Motor Vehicle Occupant	5	1
Total Injuries	10	2

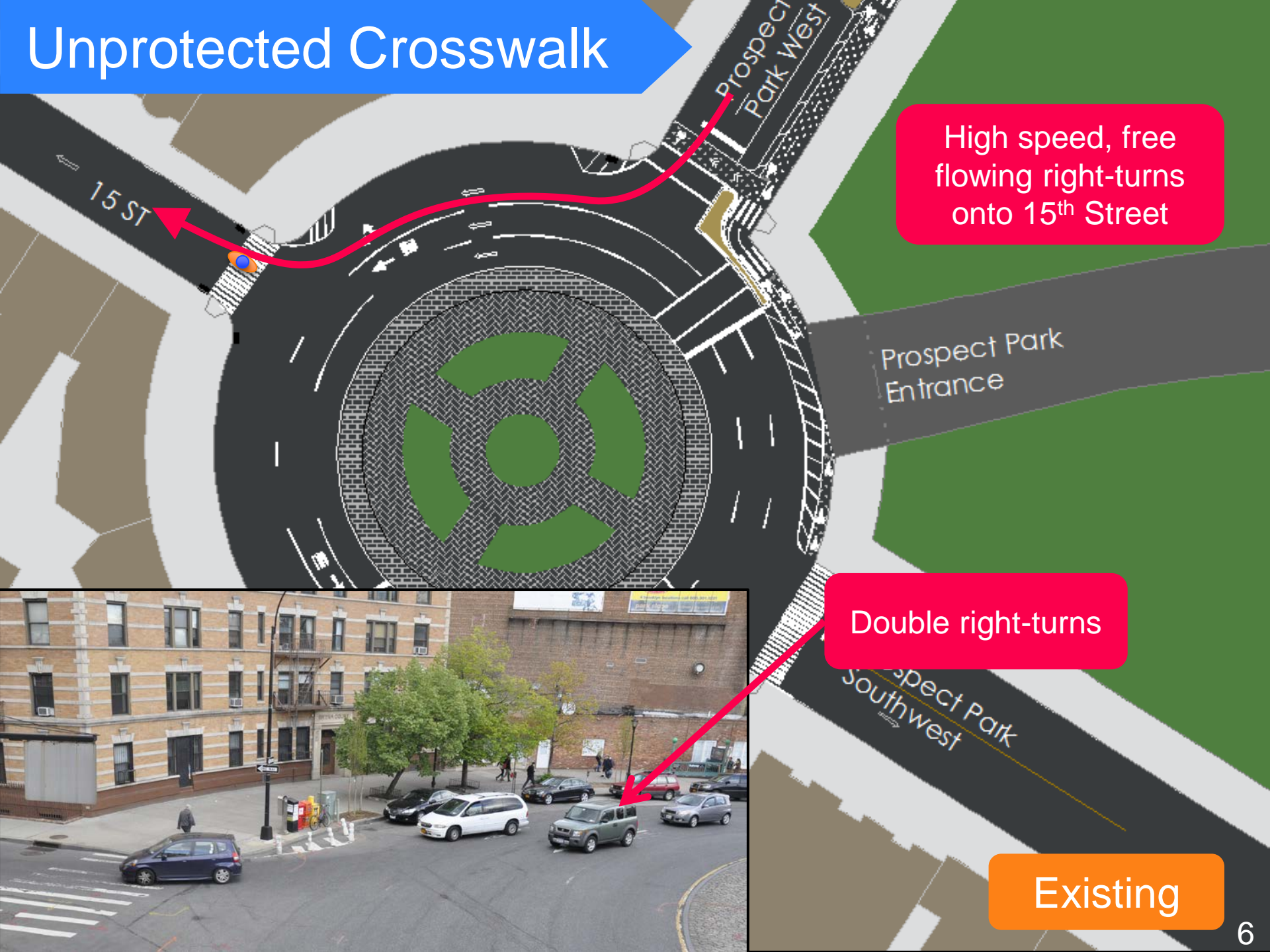
Source Data: NYS Dept of Motor Vehicles/ NYC Dept of Transportation

- 50% of motor vehicle crashes were rear-end



15th Street
Crosswalk

Unprotected Crosswalk



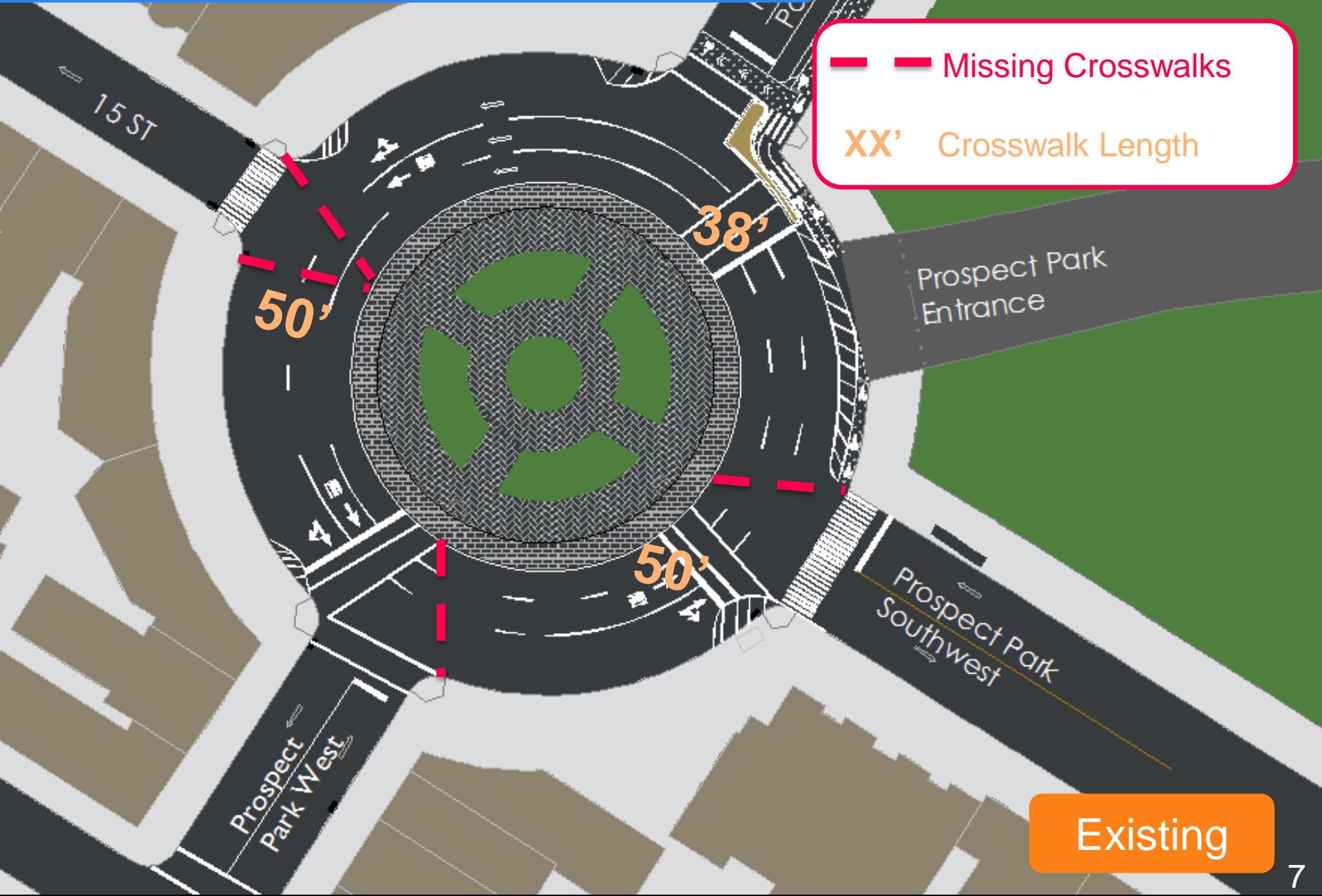
High speed, free flowing right-turns onto 15th Street

Double right-turns

Existing



Incomplete Pedestrian Access



Double Turns



Illegal double right-turns merge into single lane causing conflict

Existing

Double Turns



Fast Action Toolkit

- Pavement markings
- Signal timing
- New signage
- Painted and/or textured surfaces
- Flexible delineators

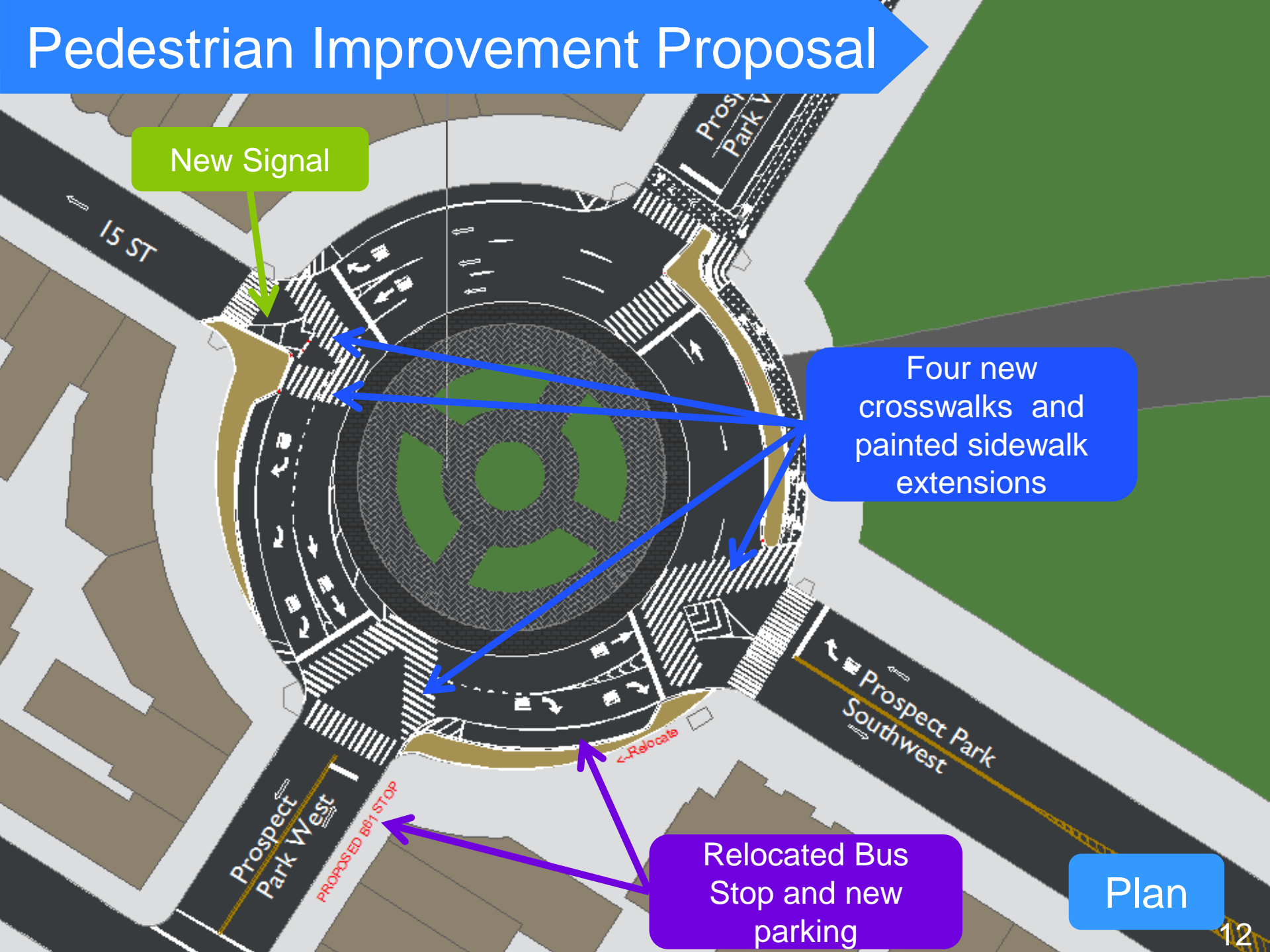


Project Proposal



Plan

Pedestrian Improvement Proposal



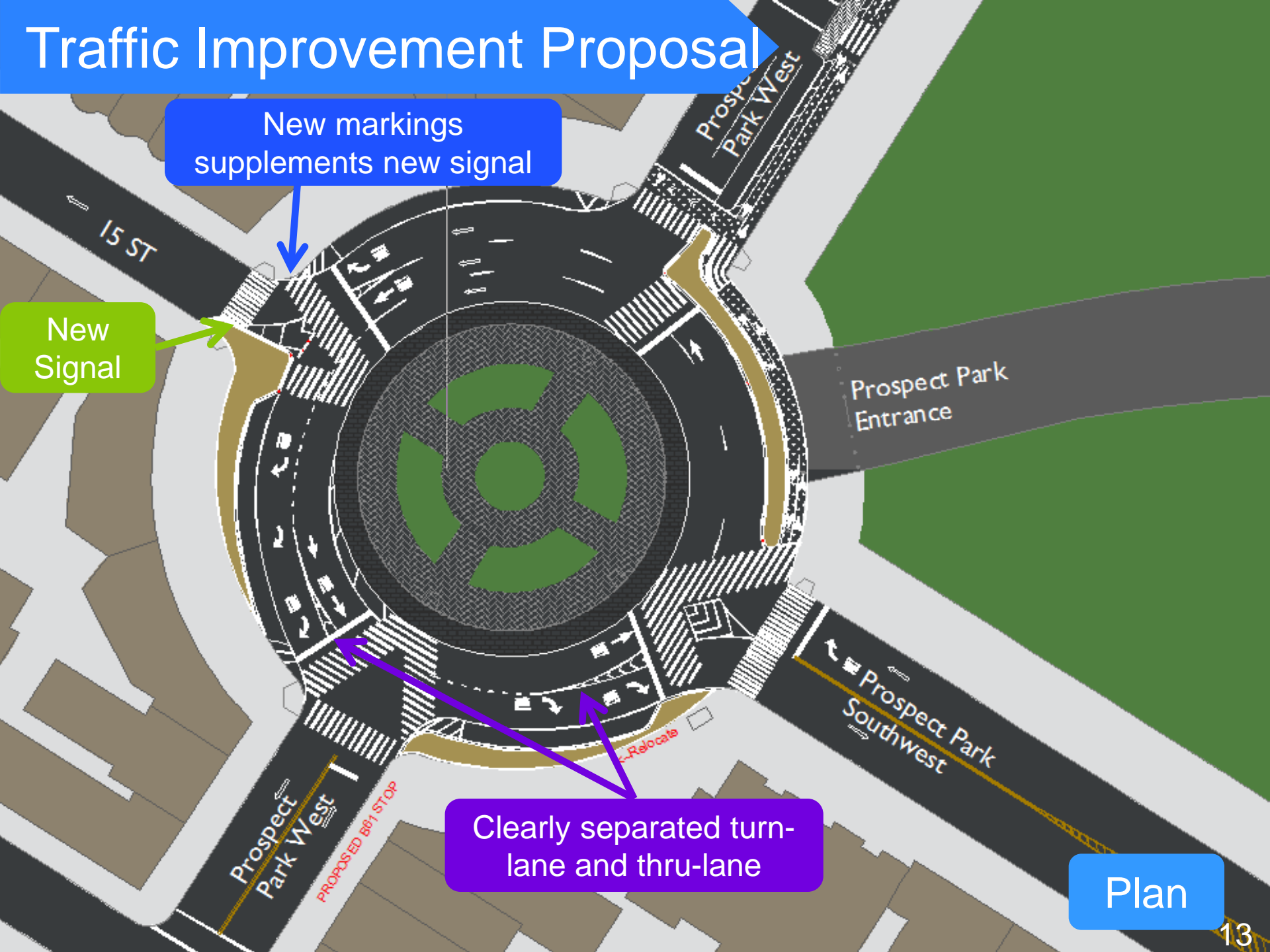
New Signal

Four new crosswalks and painted sidewalk extensions

Relocated Bus Stop and new parking

Plan

Traffic Improvement Proposal



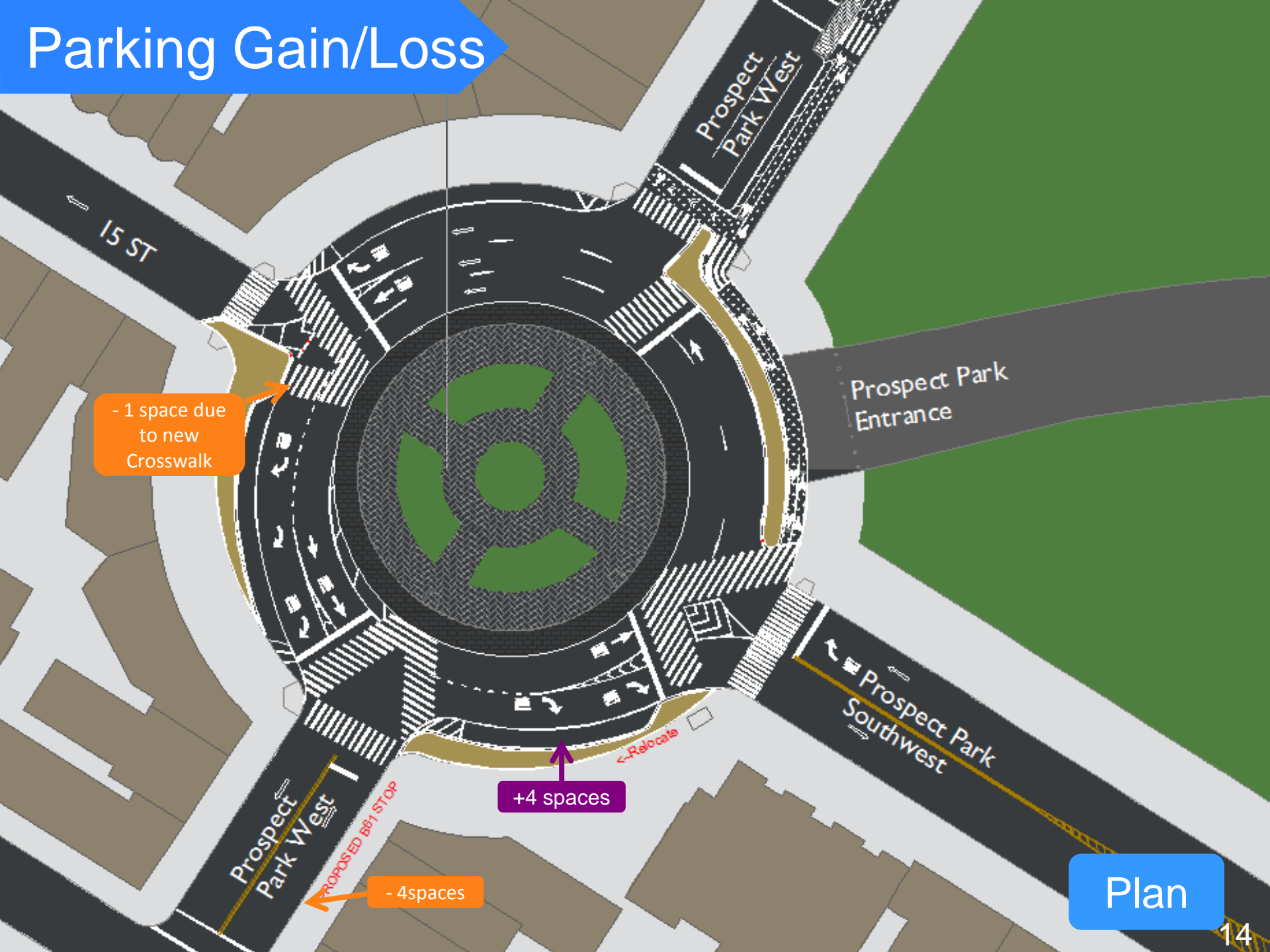
New markings supplements new signal

New Signal

Clearly separated turn-lane and thru-lane

Plan

Parking Gain/Loss



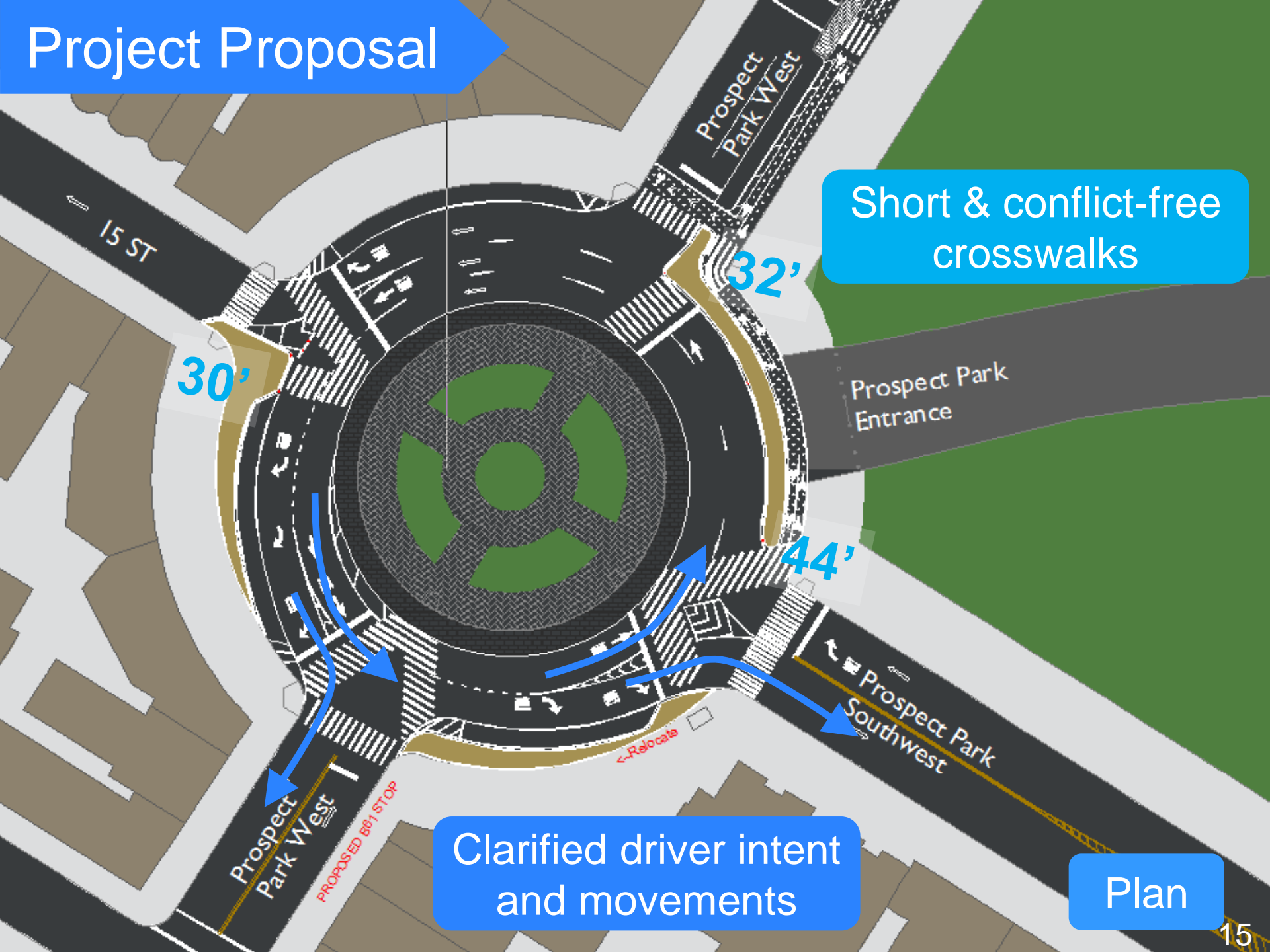
- 1 space due to new Crosswalk

+4 spaces

- 4spaces

Plan

Project Proposal



Short & conflict-free crosswalks

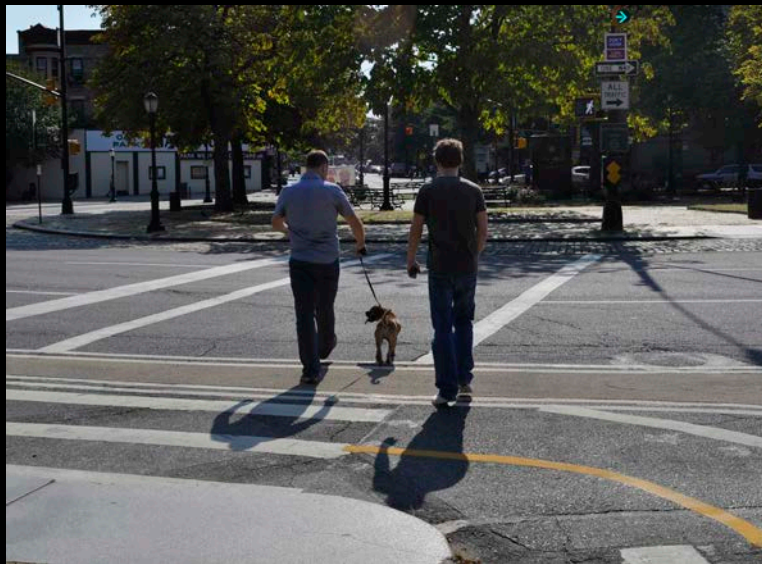
Clarified driver intent and movements

Plan

Improvement Summary

Safety Improvements at Bartel Pritchard Square:

- Add new crosswalks to the circle at 15th St, Prospect Park West Avenue, and Prospect Park Southwest
- Rationalize number of moving lanes
- Add new pedestrian space
- Clarify lane markings and lane assignments
- Improve signal timing



nyc.gov/dot

**Thank
You**