

# Varick & Canal Street

## Pedestrian Improvements at Holland Tunnel

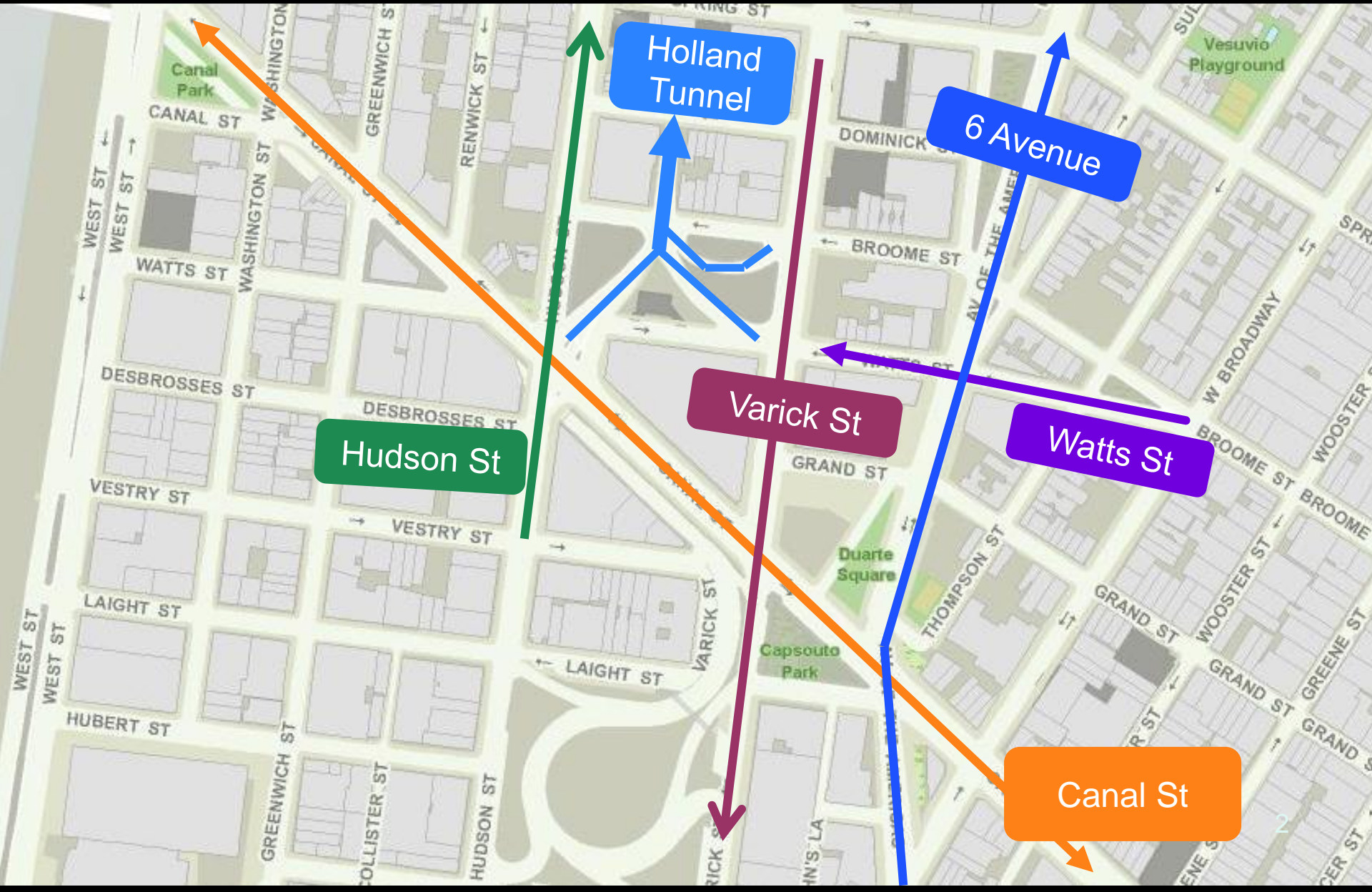
Summer  
2012



Commissioner Janette Sadik-Khan    New York City Department of Transportation  
Presented by the Pedestrian Projects Group on June 12, 2012 at Community Board 2's Transportation Committee



# Project Area



# General Issues

- Heavy tunnel traffic + turns threaten pedestrians in crosswalks
- Long crosswalks
- Poorly aligned intersections
- Underutilized roadbed





# Rapid Response Toolkit

- Pavement markings
- Concrete safety islands
- New signage
- Painted and/or textured surfaces
- Flexible delineators



# Rapid Response Toolkit

## Painted Sidewalk Extension Examples



Canal St at E. Broadway  
Lower East Side



Schermerhorn St., Brooklyn



# Varick/Broome/Watts Issues



Problem crosswalk

No crosswalk

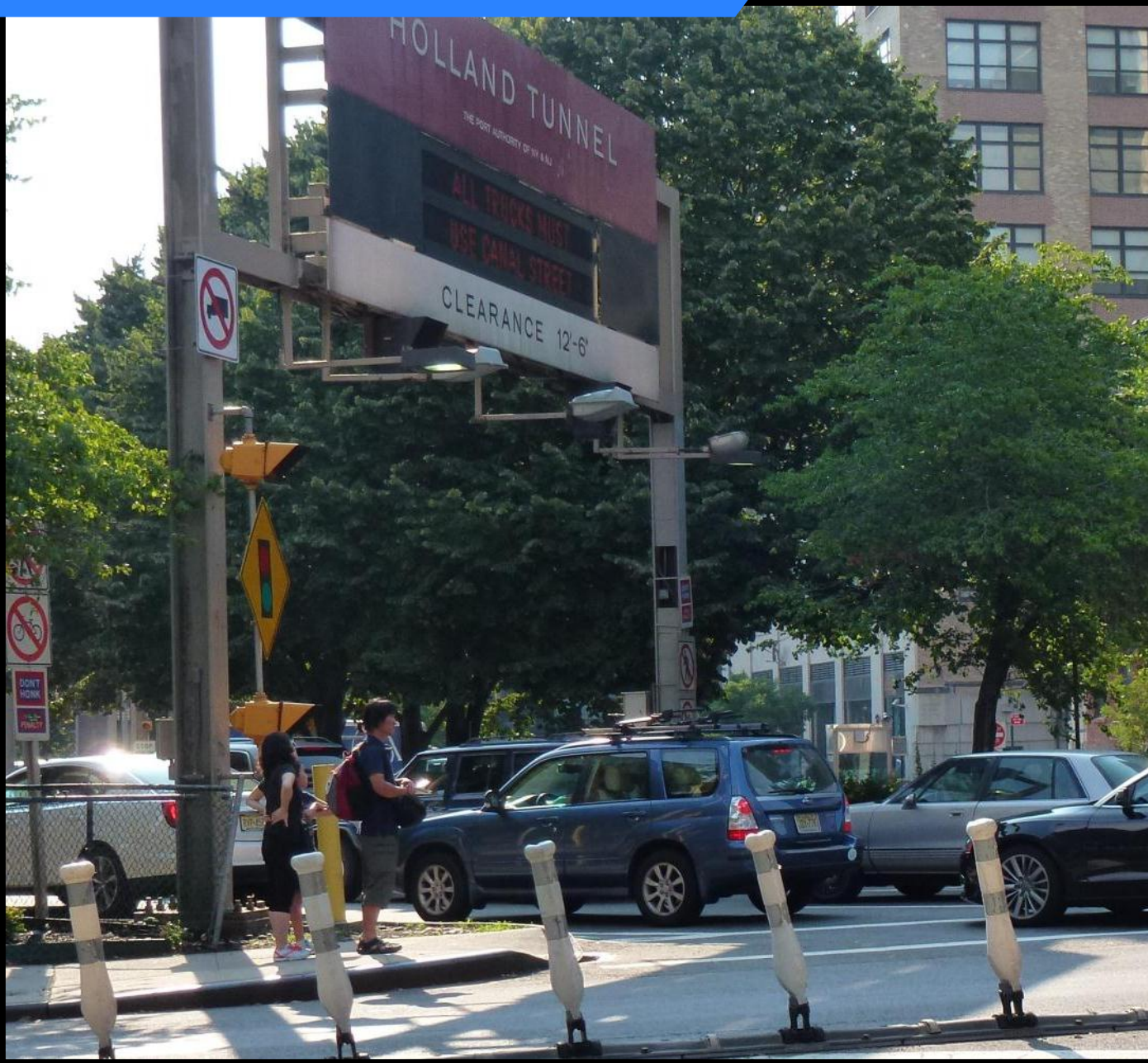
Varick Street

Broome Street

Watts Street

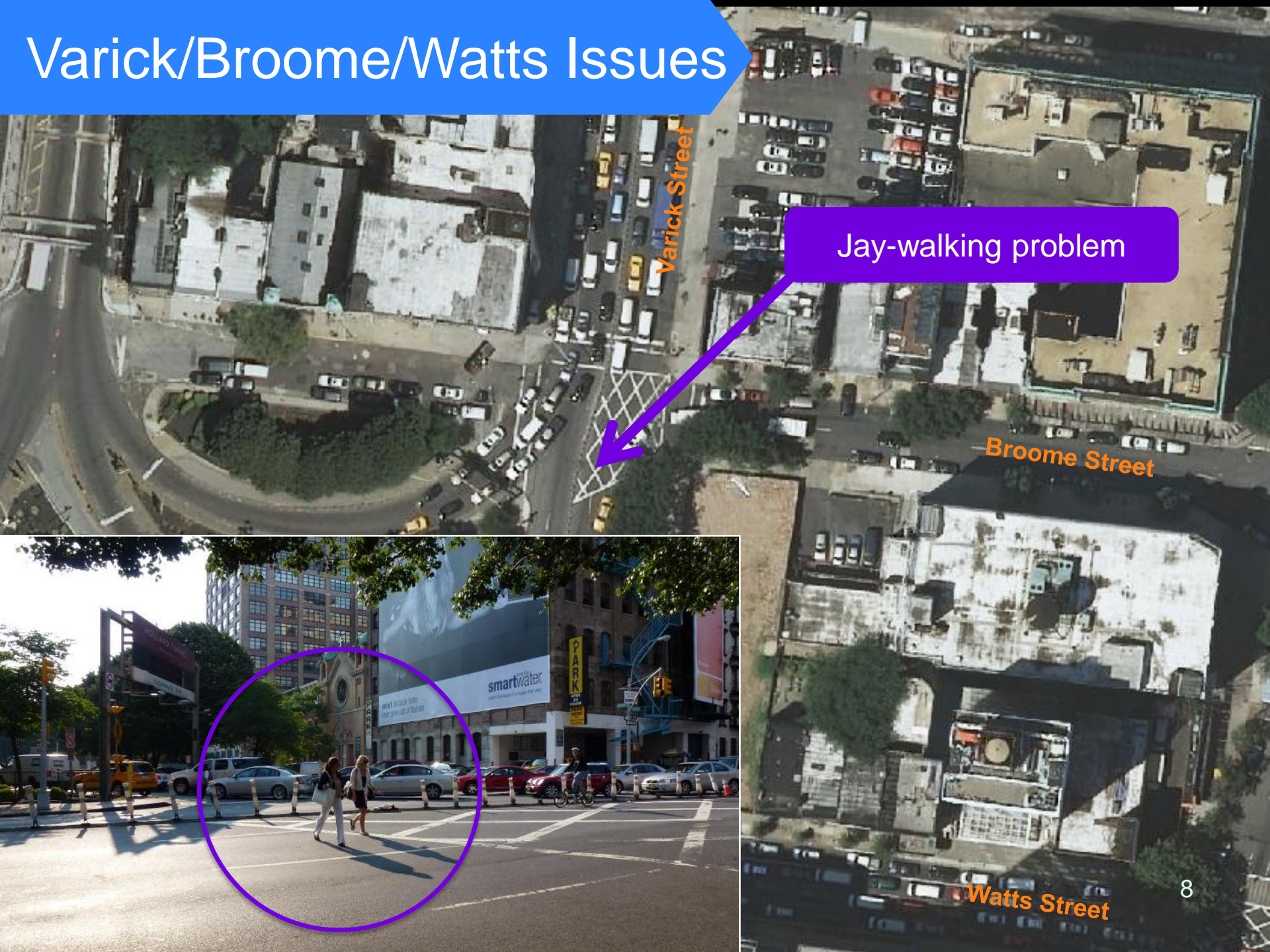


# Varick/Broome/Watts Issues



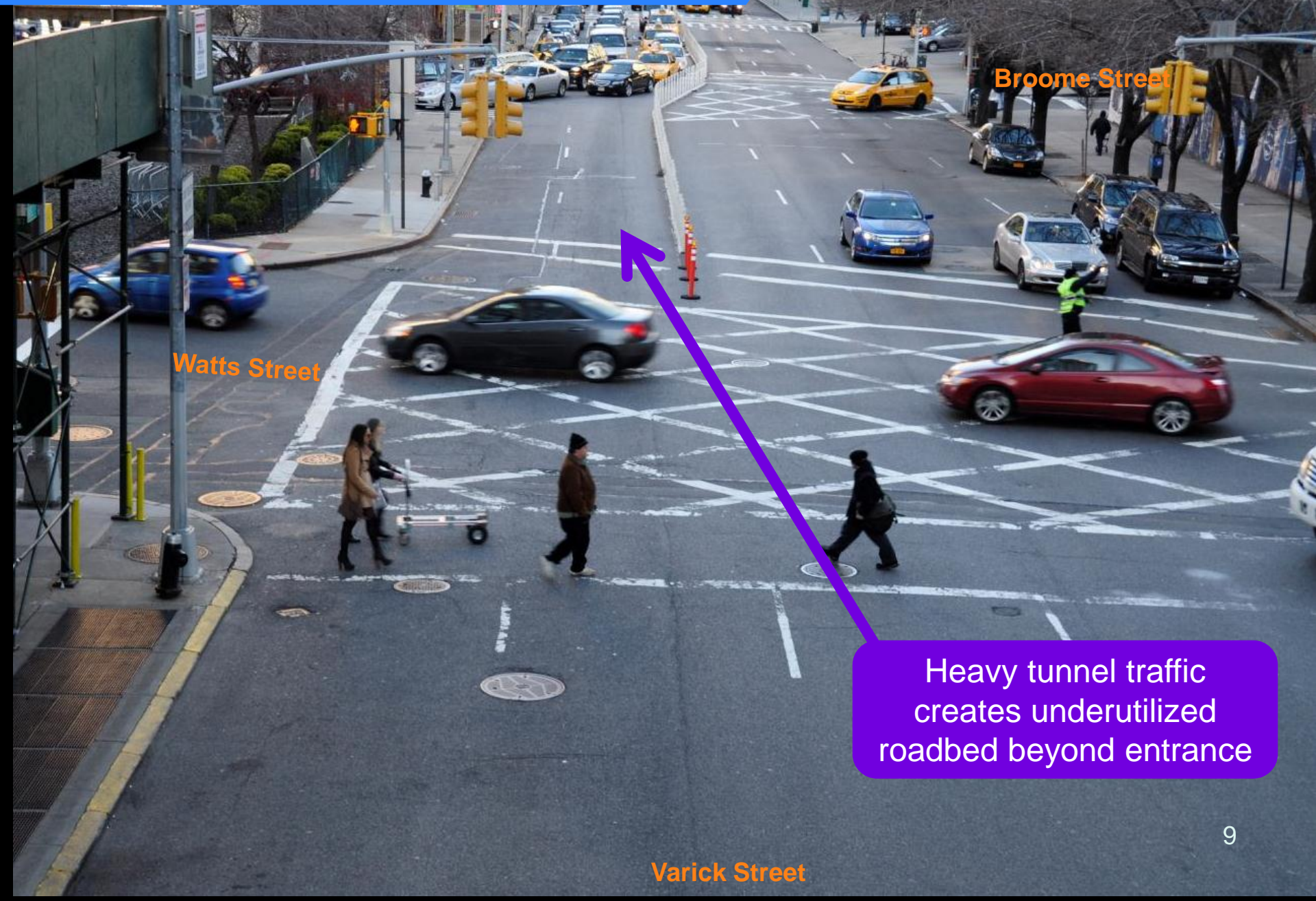


# Varick/Broome/Watts Issues





# Varick/Broome/Watts Issues



Watts Street

Broome Street

Heavy tunnel traffic  
creates underutilized  
roadbed beyond entrance

Varick Street



# Proposed Plan





# Proposed Plan



Re-aligned crosswalk limits exposure to tunnel-bound vehicles + crosses pedestrians during east-west phase

New pedestrian space shortens crosswalks and enhances walking environment

New crosswalk provides alternative crossing to tunnel entrance

Shorter crosswalks on Varick St



# Hudson + Canal Issues

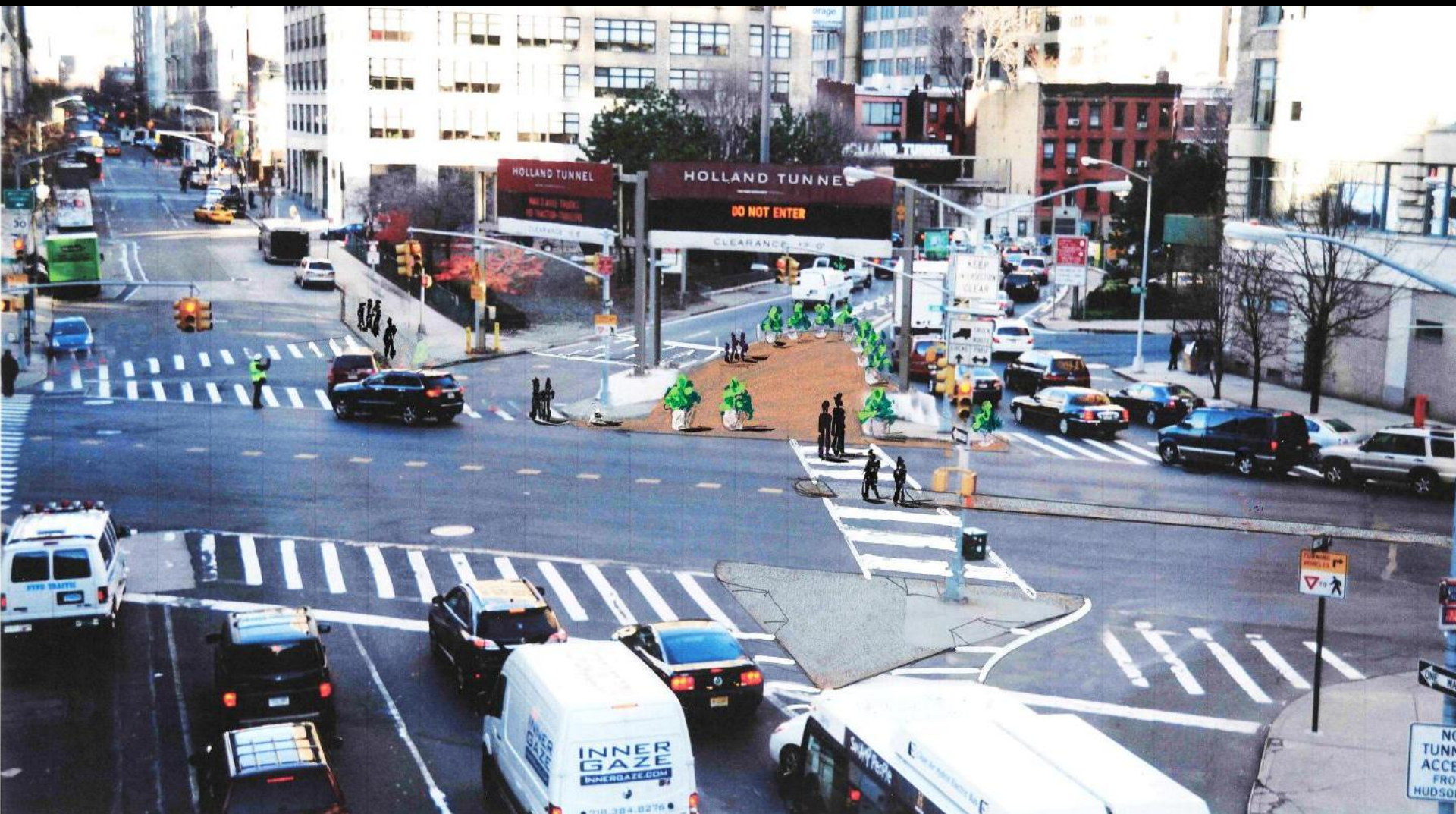
Pedestrian desire line at unmarked crossing



Long and difficult tunnel crosswalks

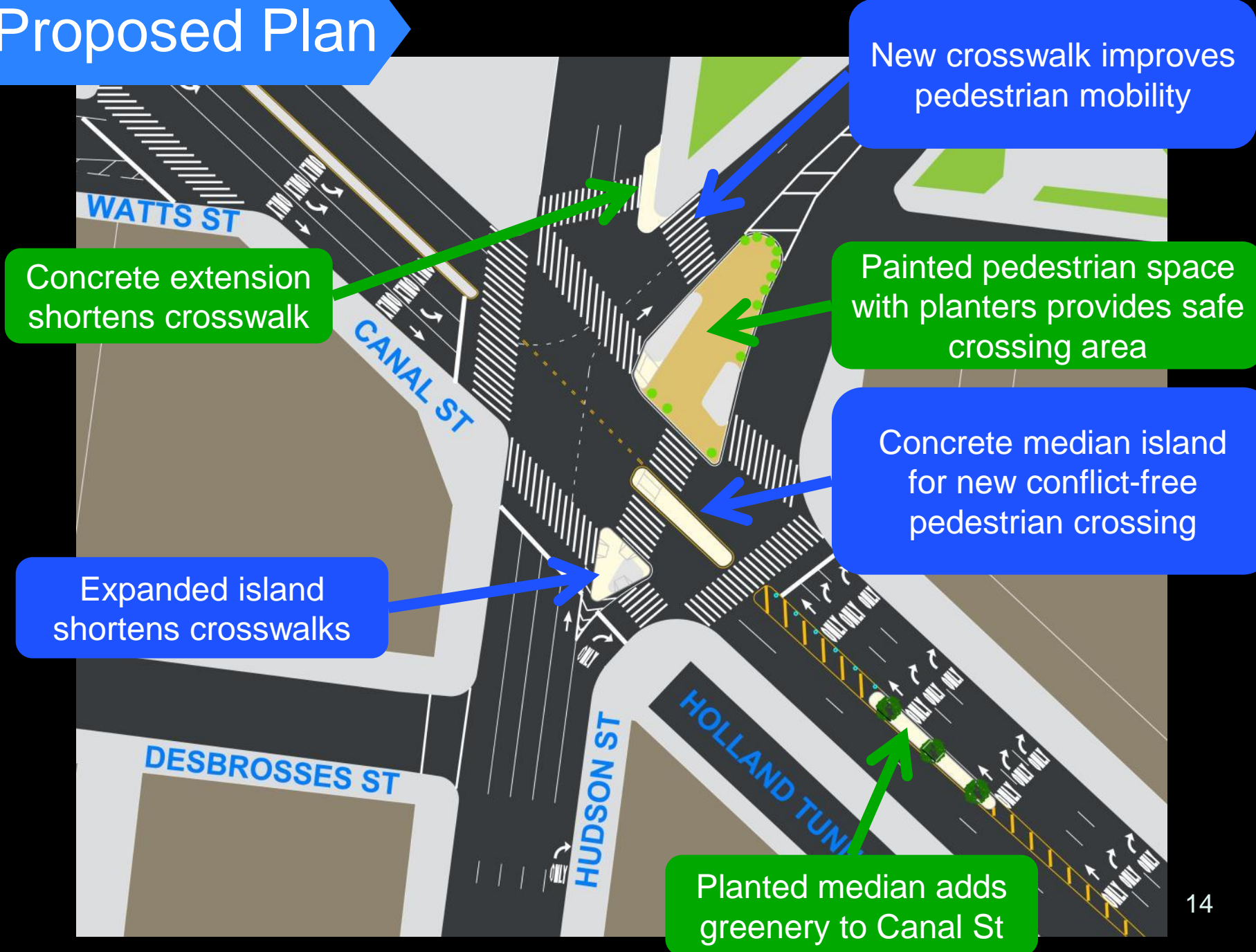


# Proposed Plan





# Proposed Plan





# Sixth Ave + Canal Issues



High speed left-turns leads to violations of yield-to-pedestrian laws  
(banned 4-7 PM M-F)



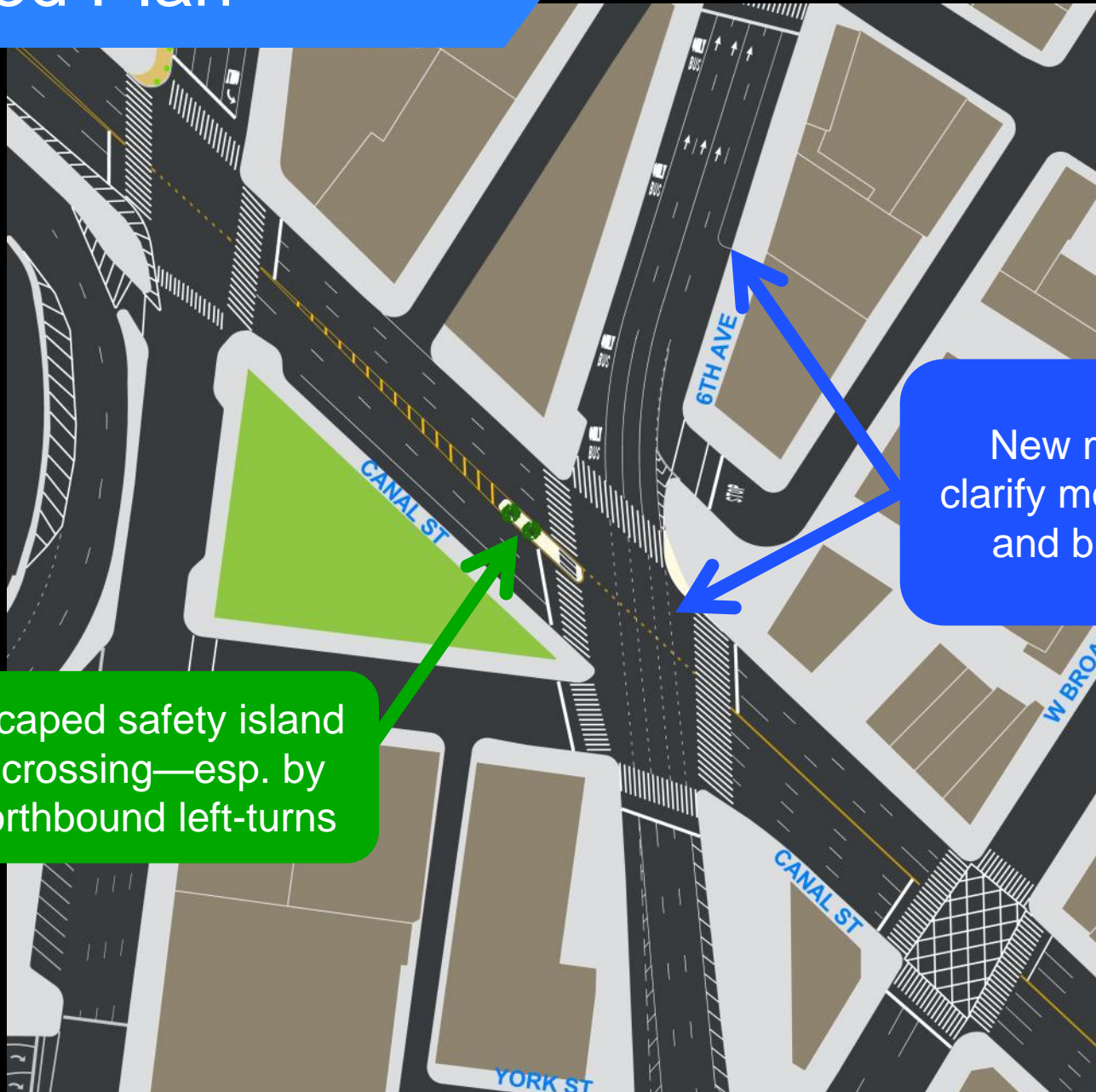
# Sixth Ave + Canal Issues

Northbound vehicle lane  
alignment shift within  
intersection





# Proposed Plan

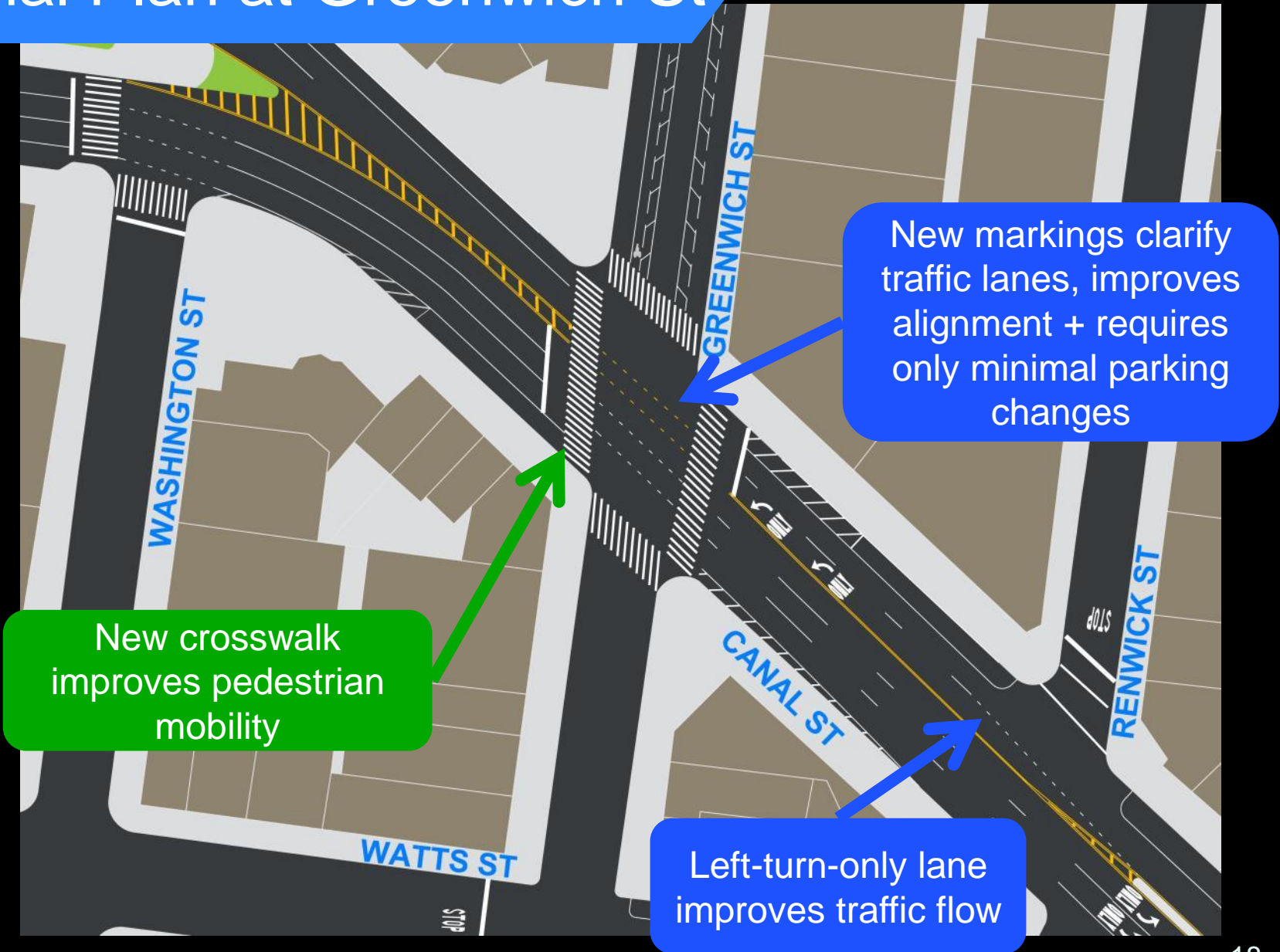


New landscaped safety island improves crossing—esp. by slowing northbound left-turns

New markings clarify moving lanes and bus lanes



# Canal Plan at Greenwich St





# Proposal Summary

1. Varick St: Convert two unnecessary receiving lanes beyond tunnel between Broome St and Watts St into painted sidewalk extension protected by granite blocks and planters
2. Canal + Hudson Streets at Tunnel: Add median islands east of tunnel, expand existing island south of Canal for new conflict-free crosswalk; and create pedestrian area with new crosswalk at the mouth of tunnel
3. Canal St + Ave of the Americas (Sixth Ave): Add a safety island on west side + clarify bus only markings and vehicle transition on Sixth Ave
4. Canal St: Improve overall lane markings between West St and Sixth Ave, adding a westbound left-turn bay at Greenwich St







Thank  
You