

# Queens Boulevard & 69<sup>th</sup> Street

High Pedestrian Crash Location

Community Board 2 – September 19, 2011

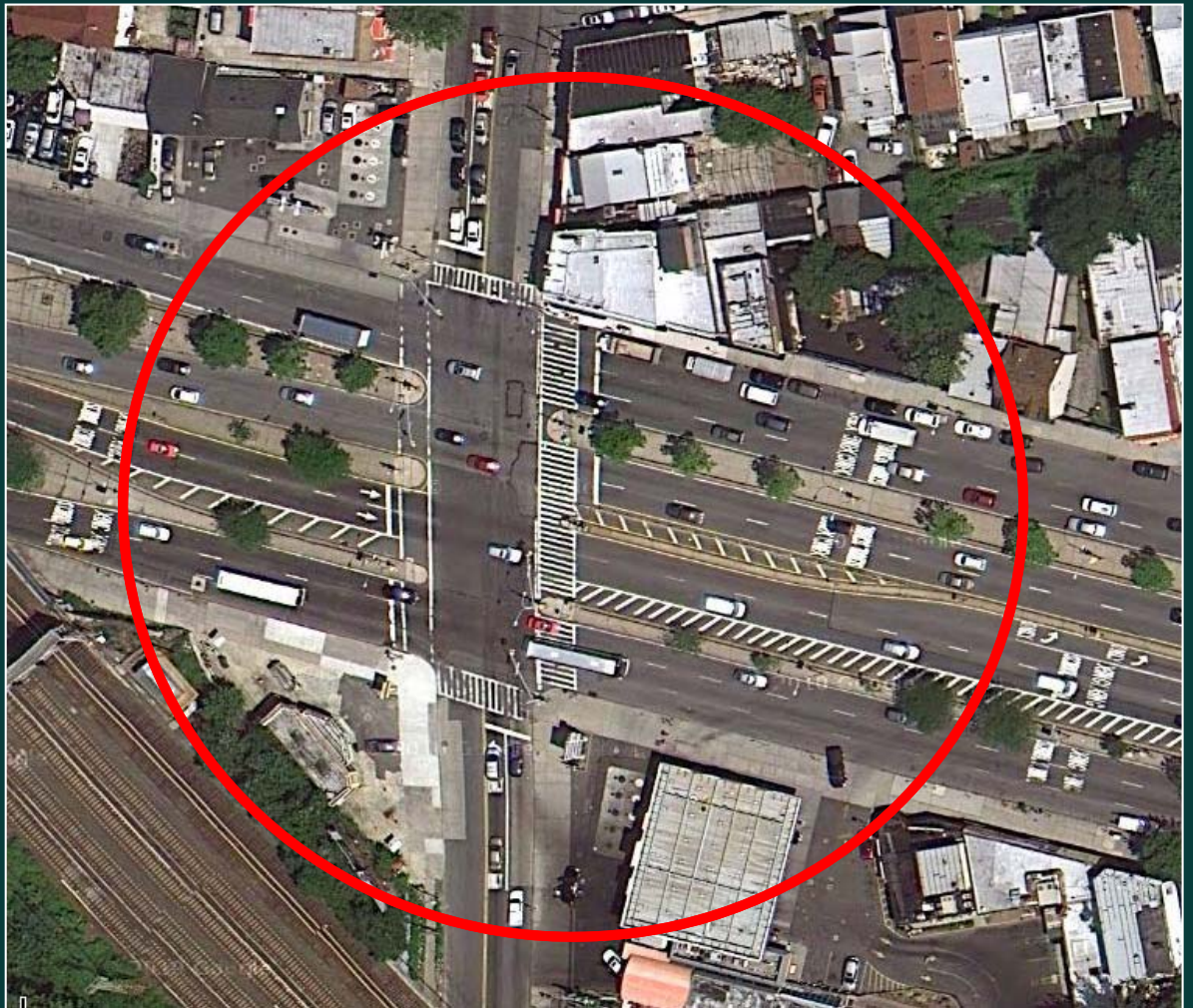
2011



Commissioner Janette Sadik-Khan New York City Department of Transportation  
Office of Research, Implementation and Safety

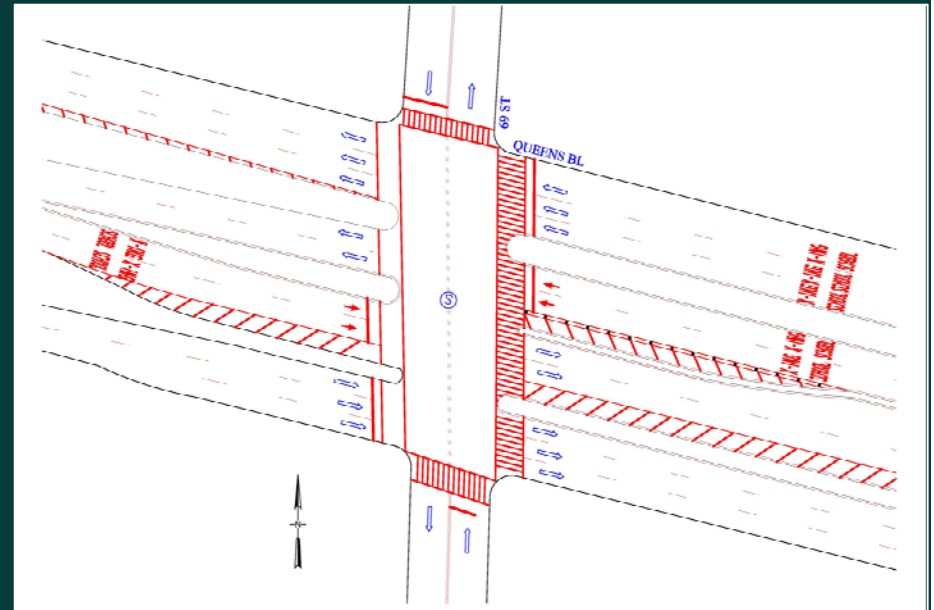
# Project Background

- High crash intersection
- Woodside neighborhood
- Previous intersection improvements



# Project Details

- Through truck routes on Queens Blvd
- Bus routes: M60, Q45, Q53, Q58, Q59, QM1, QM2A, QM4, QM5, QM6, QM7, QM8, QM11, QM12, QM18, X63, X64, X68
- Subway stations: E/M/R Woodhaven Blvd, 67th Ave, E/F/M/R 71st Ave



Existing Conditions

Queens Blvd & 69<sup>th</sup> St: 2005-2009

	Total Injuries	Avg Inj/Yr	Severity Percentile of Borough Intersections*
Pedestrian	14	2.8	99%
Bicyclist	12	2.4	99%
Motor Vehicle Occupant	75	15	99%
<b>Total Injuries</b>	<b>101</b>	<b>20.2</b>	<b>99%</b>

Source Data: NYS Dept. of Motor Vehicles / NYS Dept. of Transportation

Fatalities (2004-Present):

- 1 Cyclist

**Ranks in 99<sup>th</sup> Percentile for pedestrian crashes at intersections in Queens**

# Need: Why Queens Blvd & 69<sup>th</sup> St?



Queens Blvd & 69<sup>th</sup> St



Queens Blvd & 69<sup>th</sup> St, looking west

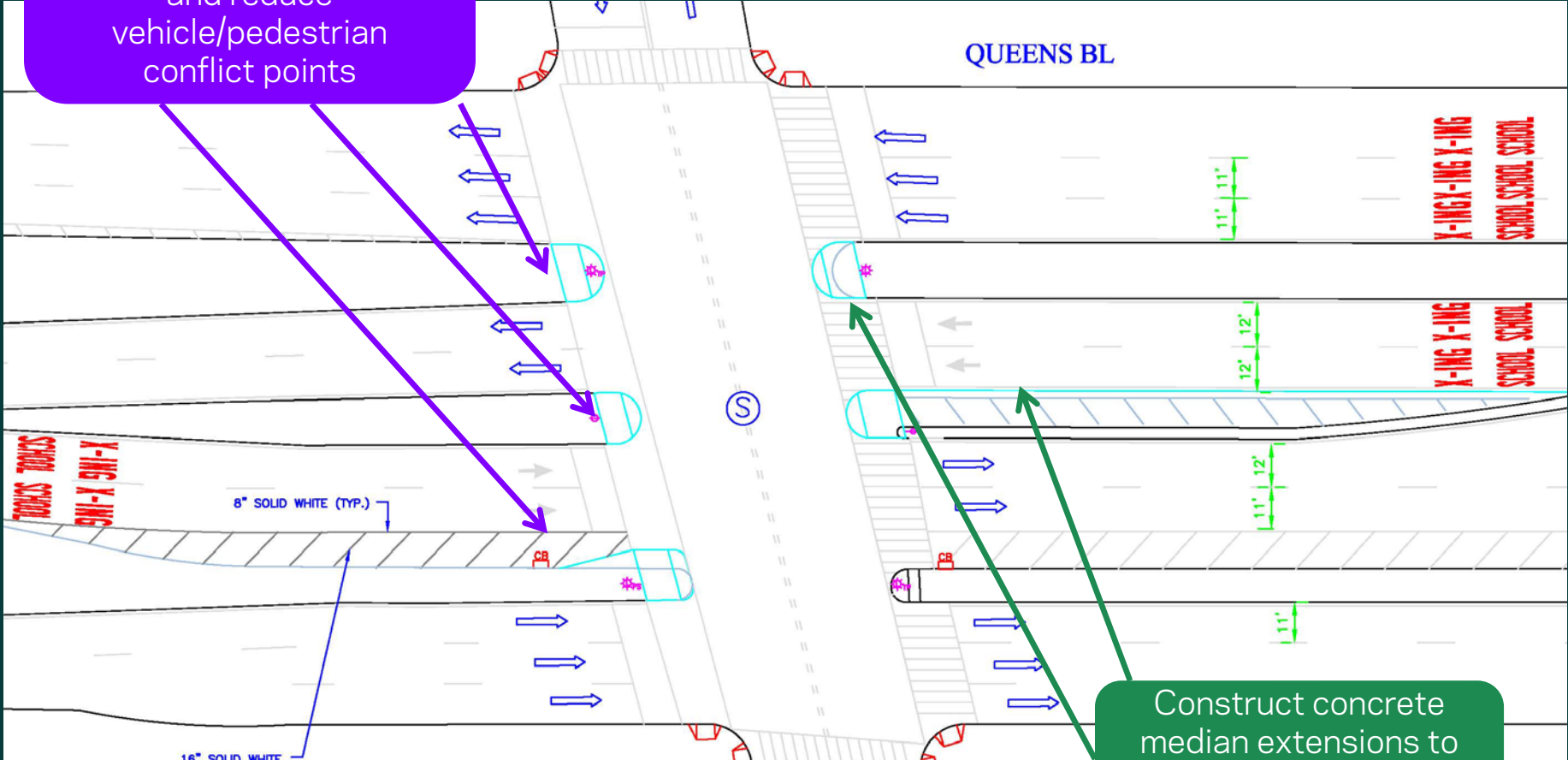
- Long crossing distances
- Multiple pedestrian/vehicle conflict points
  - Heavy vehicular through volumes
  - Substandard refuge on existing medians



Queens Blvd & 69<sup>th</sup> St, looking south

# Proposal Details

Construct concrete median extensions to create safer crossings and reduce vehicle/pedestrian conflict points



Construct concrete median extensions to reduce speeding and calm traffic

# Benefits of Proposal

## Crash Reduction Rates: Queens Blvd and Broadway

- Pedestrian crashes ↓ 89%
- Injury crashes ↓ 41%
- Vehicle crashes ↓ 27%



Proposed design implemented in 2010 at Queens Blvd & Broadway

Questions?

Thank  
You

Contact:

Queens Borough Commissioner's Office at [gbc@dot.nyc.gov](mailto:gbc@dot.nyc.gov) or 212-839-2510