

Hylan Boulevard & Steuben Street

High Pedestrian Crash Location

Community Board 2

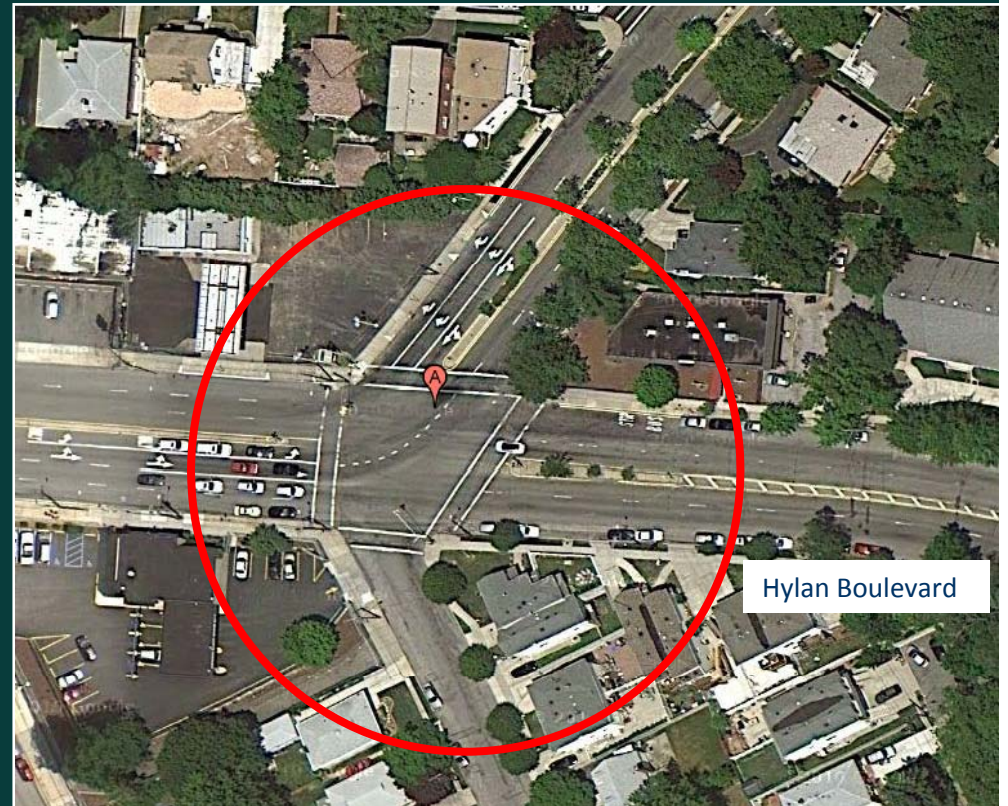
2011



Commissioner Janette Sadik-Khan New York City Department of Transportation
Office of Research, Implementation and Safety

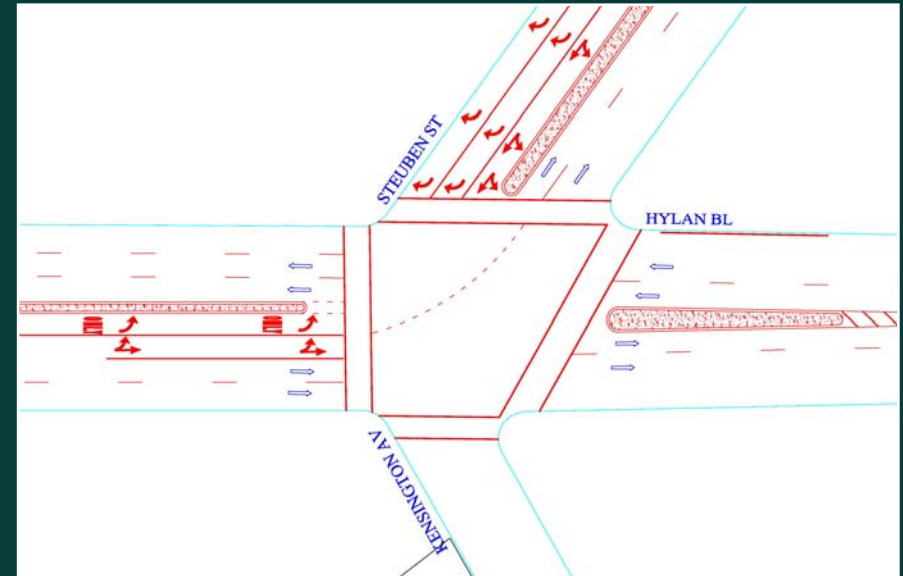
Project Background

- High crash intersection ranking in the 99th percentile in Staten Island
- Two left-turning fatalities from EB Hylan Blvd onto NB Steuben St in August and November 2010
- Request from Borough President Molinaro and Council Member Oddo for intersection improvements



Need: Why Hylan & Steuben?

- Multi-lane roadway with high vehicular volumes
- Skewed intersection with heavy left turn volumes
- Multiple bus routes along Hylan Blvd
- Mixture of commercial and residential land uses



Existing Conditions

Ranks in 99th Percentile for pedestrian crashes

HYLAN BLVD and STEUBEN ST and KENSINGTON AV (2005-2009)

	Total Injuries	Avg Inj/Yr	Severity Percentile of Boro Intersections
Pedestrian	0	0	
Bicyclist	0	0	N/A
Motor Veh Occupant	90	18	99%
Total Injuries	90	18	99%

Source Data: NYS Dept. of Motor Vehicles / NYS Dept. of Transportation

Fatalities (2005-Present):

3 Motor Vehicle Occupants

Need: Why Hylan & Steuben?



Hylan Blvd & Steuben St, east crosswalk, looking north

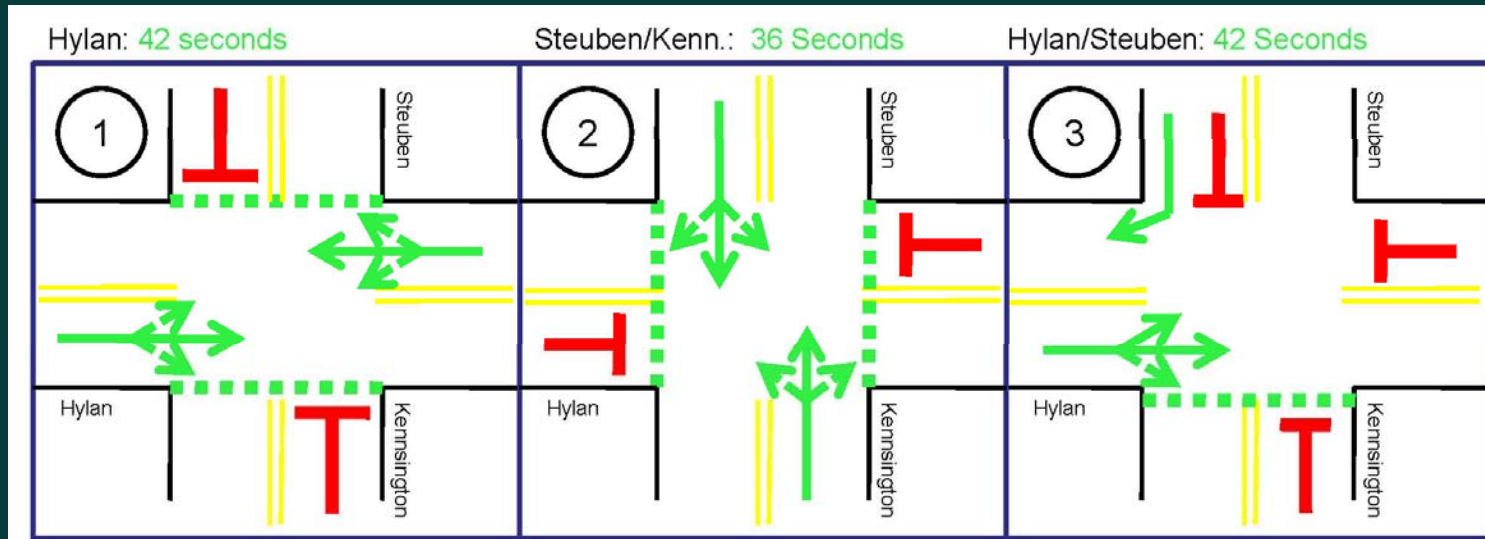
- Long crossing distances
- Heavy vehicular volumes with numerous trucks and buses
- Vehicle/pedestrian conflicts due to high number of turns



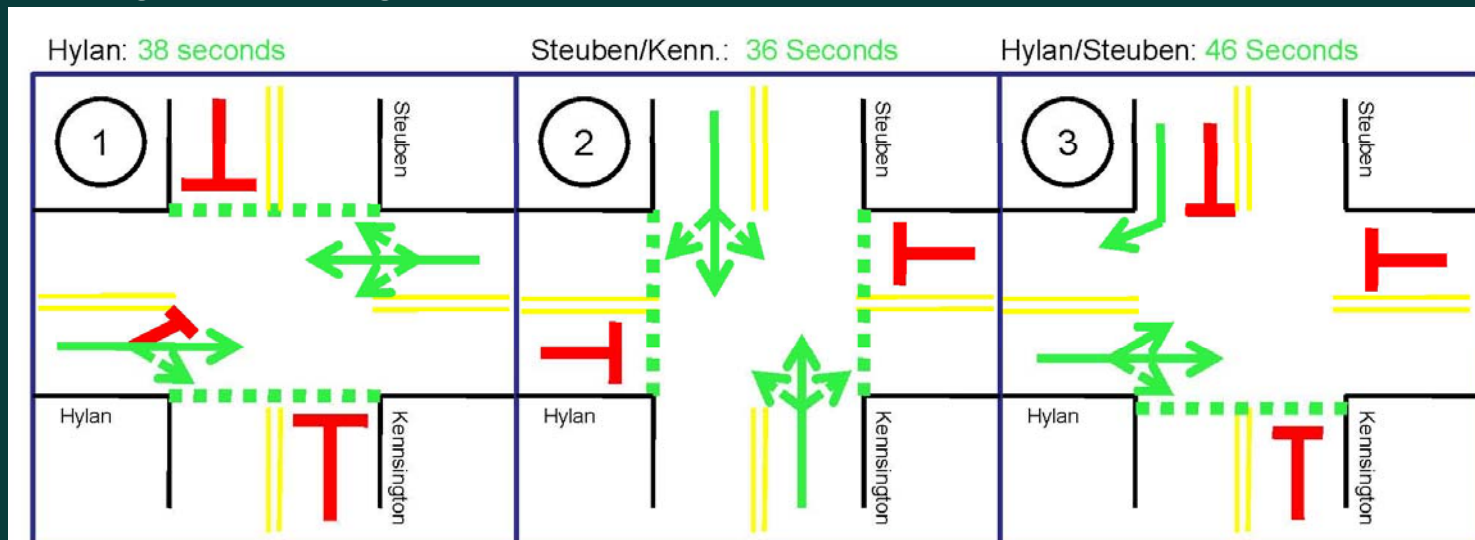
Hylan Blvd & Steuben St, west crosswalk, looking east

Signal Timing Changes

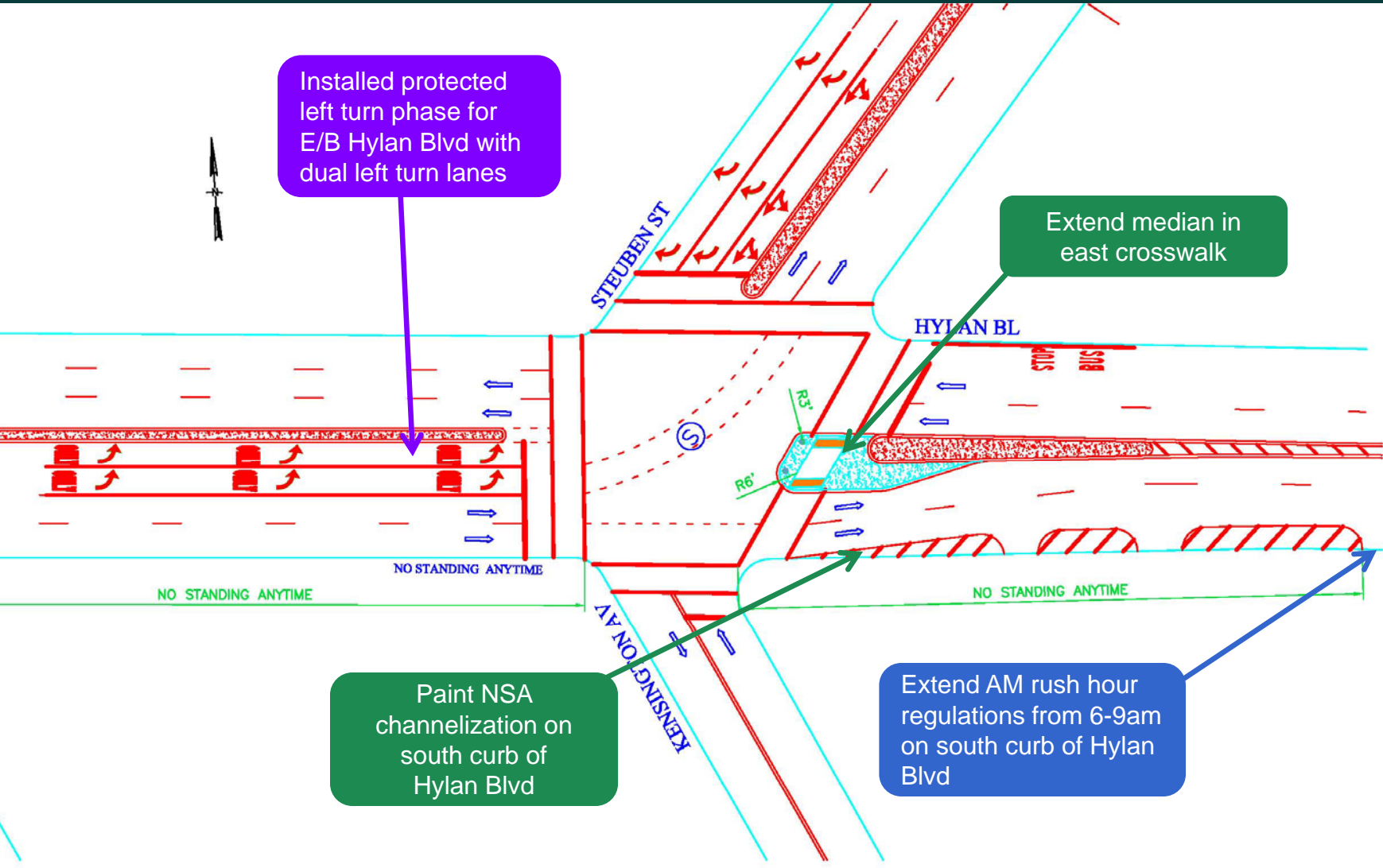
Previous Signal Timing:



Current Signal Timing:



Proposal Details



Benefits of Proposal

- Provides protected crosswalk in north leg of intersection
- Creates protected left turn phase for heavy left turn movements
- Provides safer pedestrian crossings
- Better aligns traffic



New lane designations on E/B Hylan Blvd:

Questions?

Thank
You

Contact:

Hillary Poole at HPoole@dot.nyc.gov or Nichole Altmix at naltmix@dot.nyc.gov